

ANNEX C INTERNAL PHOTOS

PHOTO 1

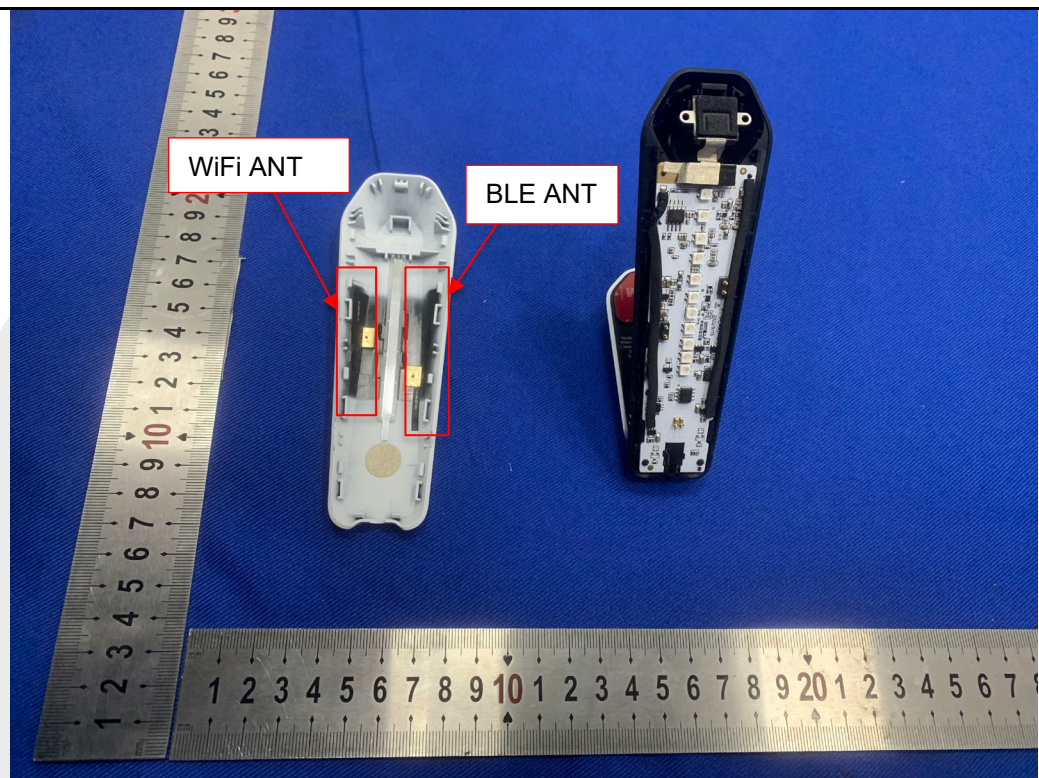
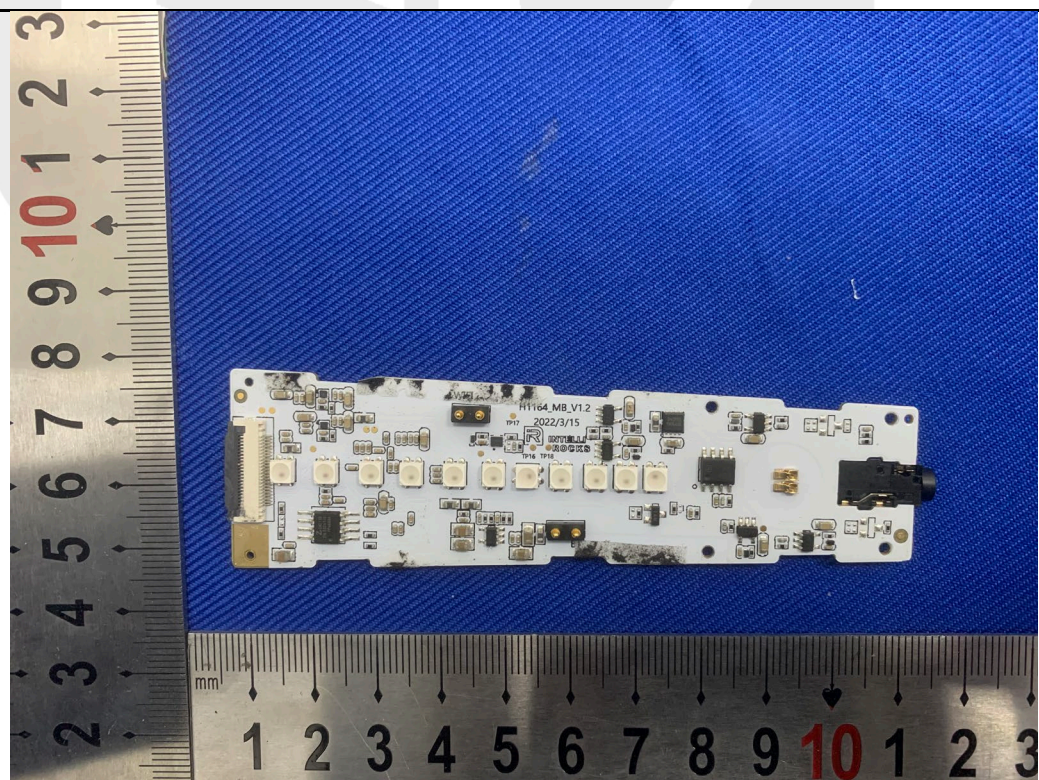


PHOTO 2



[illegible]

A photograph of the underside of a white Intel NUC keyboard. The keyboard is oriented horizontally, showing its internal components. The main body is white plastic with a complex internal circuit board. Various electronic components are visible, including capacitors, resistors, and integrated circuits. A prominent feature is the Intel logo, which includes the text "INTEL", "2022/3/15", and "H1164 M8 V1.2". To the right of the logo, there is a small black component labeled "WIFI". The keyboard is placed on a blue, textured surface.

PHOTO 5

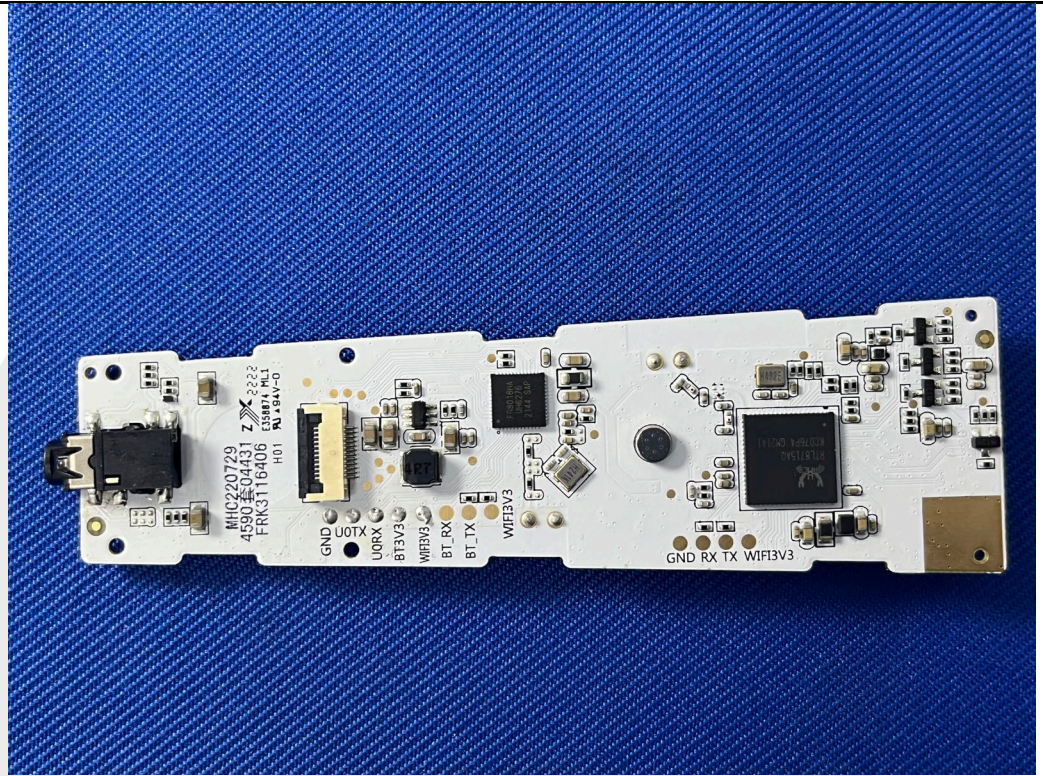


PHOTO 6

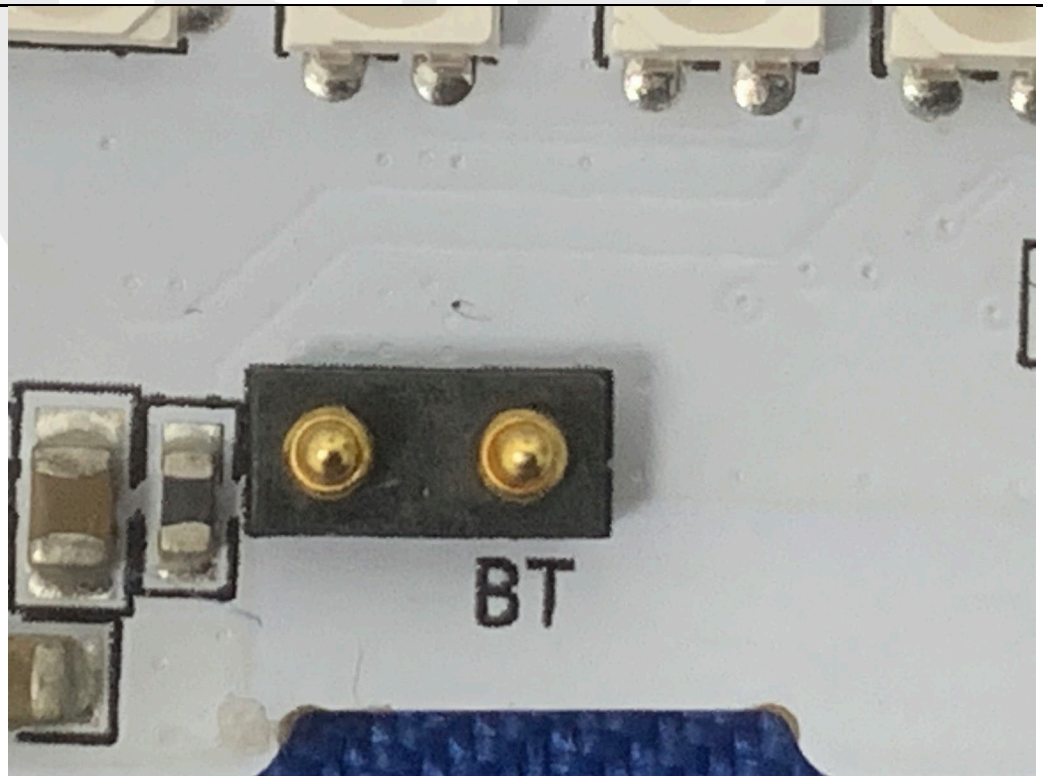


PHOTO 7



--- End ---