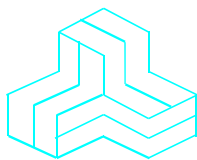


ENGINEERING TEST REPORT



VHF Digital Transceiver Model No.: IC-F3400DT

FCC ID: AFJ376600

IC: 202D-376600

Tested For
ICOM Incorporated
1-1-32, Kamiminami,
Hirano-ku, Osaka,
Japan, 547-0003

In accordance with
**SAR (Specific Absorption Rate) Requirements using guidelines established in
IEEE C95.1-1992, FCC OET Bulletin 65 (Supplement C), FCC 47CFR Part 2.1093
And Industry Canada RSS-102 (Issue 5)**

UltraTech's File No.: ICOM-435Q-SAR FCC

This Test report is Issued under the Authority of
Tri M. Luu, BASc,
Vice President of Engineering
UltraTech Group of Labs

Date: August 16, 2016

Report Prepared by:
Maxavier Kee
Issued Date:
August 14, 2016

Tested by:
Maxavier Kee
Test Dates:
July 28, 2016 ~ August 12, 2016

- The results in this Test Report apply only to the sample(s) tested, and the sample tested is randomly selected.
- This report must not be used by the client to claim product endorsement by NVLAP or any agency of the US Government.
- This test report shall not be reproduced, except in full, without a written approval from UltraTech Group of Labs.

UltraTech Group of Labs

3000 Bristol Circle, Oakville, Ontario, Canada, L6H 6G4

Tel.: (905) 829-1570 Fax.: (905) 829-8050

Website: www.ultratech-labs.com , Email: vic@ultratech-labs.com , Email: tri@ultratech-labs.com



91038



1309



46390-2049



NVLAP LAB
CODE 200093-0



AT-1945



SL2-IN-E-
1119R



Korea
KCC-RRA

CA2049



TL363_B



TPTDP
DA1300

TABLE OF CONTENTS

EXHIBIT 1. INTRODUCTION	2
1.1. SCOPE.....	2
1.2. REVISION HISTORY	2
1.3. REFERENCES	3
EXHIBIT 2. PERFORMANCE ASSESSMENT.....	4
2.1. CLIENT AND MANUFACTURER INFORMATION	4
2.2. DEVICE UNDER TEST (D.U.T.) DESCRIPTION	5
2.3. LIST OF D.U.T.'S ACCESSORIES:.....	8
2.4. SPECIFIC OPERATING AND TEST CONDITIONS	11
EXHIBIT 3. SUMMARY OF TEST RESULTS	12
3.1. LOCATION OF TESTS	12
3.2. APPLICABILITY & SUMMARY OF SAR RESULTS	12
EXHIBIT 4. SAR SYSTEM CONFIGURATION	17
4.1. DASY5 SYSTEM OVERVIEW.....	17
4.2. SAR TEST PHANTOMS	21
EXHIBIT 5. SAR DATA ACQUISITION METHODOLOGY	22
5.1. SAR MEASUREMENT PROCEDURE.....	22
EXHIBIT 6. MEASUREMENTS, EXAMINATIONS & TEST DATA	26
6.1. TEST CONFIGURATIONS	26
6.2. GENERAL TEST SETUP	27
6.3. PHOTOGRAPHS OF TISSUE DEPTH AND EUT FOR HEAD AND BODY CONFIGURATION	28
EXHIBIT 7. SAR MEASUREMENT SYSTEM VERIFICATION	37
7.1. STANDARD SOURCE.....	37
7.2. STANDARD SOURCE INPUT POWER MEASUREMENT	38
7.3. SYSTEM VALIDATION PROCEDURE	38
7.4. VERIFICATION RESULTS	39
EXHIBIT 8. D.U.T. POWER MEASUREMENT	44
8.1. RF CONDUCTED OUTPUT POWER MEASUREMENT	45
EXHIBIT 9. TISSUE DIELECTRIC PARAMETER CALIBRATION.....	46
9.1. SIMULATED TISSUE	46
9.2. MEASUREMENT OF ELECTRICAL CHARACTERISTICS OF SIMULATED TISSUE	47
9.3. SIMULATED TISSUE MEASUREMENT RESULTS	49
EXHIBIT 10. SAR MEASUREMENT UNCERTAINTY	51
10.1. MEASUREMENT UNCERTAINTY EVALUATION FOR SAR TEST	51
EXHIBIT 11. ADDITIONAL TEST INSTRUMENTS LIST	52
EXHIBIT 12. SAR MEASUREMENT DATA	52
EXHIBIT 13. SAR CALIBRATION CERTIFICATE	52
EXHIBIT 14. EUT ACCESSORIES	52

EXHIBIT 1. INTRODUCTION

1.1. SCOPE

Reference:	SAR (Specific Absorption Rate) Requirements IEEE C95.1-2005, FCC OET Bulletin 65 (Supplement C Edition 01-01), FCC 47CFR Part 2.1093 Industry Canada RSS-102 (Issue 5).
Title	Safety Levels with respect to human exposure to Radio Frequency Electromagnetic Fields Guideline for Evaluating the Environmental Effects of Radio Frequency Radiation
Purpose of Test:	To verify compliance with Federal regulated SAR requirements in Canada and the US.
Method of Measurements:	IEEE C95.1-2005, FCC OET Bulletin 65 (Supplement C Edition 01-01) and Industry Canada RSS-102 (Issue 5)
Device Category	Portable
Exposure Category	Occupational/Controlled

1.2. REVISION HISTORY

Document	Issue Date	Description
ICOM-435Q-SAR FCC	Aug 16, 2016	Original

1.3. REFERENCES

The methods and procedures used for the measurements contained in this report are details in the following reference standards:

Publications	Year	Title
IEEE Std. 1528	2013	Draft Recommended practice for determining the Peak Spatial-Average Specific Absorption rate (SAR) in the Human Body Due to Wireless Communications Devices: Experimental Techniques.
Industry Canada RSS-102, Issue 5	2015	“Evaluation Procedure for Mobile and Portable Radio Transmitters with respect to Health Canada’s Safety Code 6 for Exposure of Humans to Radio Frequency Fields”
NCRP Report No.86	1986	“Biological Effects and Exposure Criteria for radio Frequency Electromagnetic Fields”
FCC OET Bulletin 65	2001	“Evaluating Compliance with FCC Guidelines for Human Exposure to radio Frequency Fields”
ANSI/IEEE C95.3	2002	“Recommended Practice for the Measurement of Potentially Hazardous Electromagnetic Fields - RF and Microwave”
ANSI/IEEE C95.1	2010	“Safety Levels with Respect to Human Exposure to Radio Frequency Electromagnetic Fields, 3kHz to 300GHz”
ARPANSA	2002	RADIATION PROTECTION STANDARD Maximum Exposure Levels to Radiofrequency Fields — 3 kHz to 300 GHz Radiation Protection Series Publication No. 3
EN 50566	2013	Product standard to demonstrate compliance of radio frequency fields from handheld and body-mounted wireless communication devices used by the general public (30 MHz - 6 GHz)
EN 62479	2010	Assessment of the compliance of low power electronic and electrical equipment with the basic restrictions related to human exposure to electromagnetic fields (10 MHz to 300 GHz)
IEC 62209-2	2010	Human exposure to radio frequency fields from hand-held and body-mounted wireless communication devices – Human models, instrumentation, and procedures – Part 2: Procedure to determine the specific absorption rate (SAR) for wireless communication devices used in close proximity to the human body (frequency range of 30 MHz to 6 GHz)
FCC KDB	2016	865664 D01 SAR Measurement 100 MHz to 6 GHz v01r03 643646 D01 SAR Test for PTT Radios v01r01 648474 D04 Handset SAR v01r02 447498 D01 General RF Exposure Guidance v05r02 865664 D02 RF Exposure Reporting v01r01 690783 D01 SAR Listings on Grants v01r0
Health Canada’s Safety Code 6	2015	Limits of Human Exposure to Radiofrequency Electromagnetic Energy in the Frequency Range from 3 kHz to 300 GHz

EXHIBIT 2. PERFORMANCE ASSESSMENT

2.1. CLIENT AND MANUFACTURER INFORMATION

APPLICANT:	
Name:	ICOM Incorporated
Address:	1-1-32, Kamiminami, Hirano-ku, Osaka Japan, 547-0003
Contact Person:	Mr. Hideji Fujishima Phone #: +81 6 6793 5302 Fax #: +81 6 6793 0013 Email Address: world_support@icom.co.jp

MANUFACTURER:	
Name:	ICOM Incorporated
Address:	1-1-32, Kamiminami, Hirano-ku, Osaka Japan, 547-0003
Contact Person:	Mr. Hideji Fujishima Phone #: +81 6 6793 5302 Fax #: +81 6 6793 0013 Email Address: world_support@icom.co.jp

2.2. DEVICE UNDER TEST (D.U.T.) DESCRIPTION

The following is the information provided by the applicant.

Trade Name	Icom Inc.
Type/Model Number	IC-F3400DT
Serial Number	01000151
Transmitter Frequency Band	136-174 MHz VHF 2402-2480 MHz (Bluetooth Module ICOM UT-136, FCC ID:AFJ381500)
Maximum RF Output Power	5W VHF 2.04mW Bluetooth
Modulation Employed	FM VHF Bluetooth
Antenna	FA-S81V, FA-S82V, FA-S83V, FA-S81VS, FA-S82VS, FA-S83VS, FA-S67VC Bluetooth – Integrated chip antenna
Power Supply/Battery Packs	Rechargeable Li-Ion battery M/N:BP-283 (2010mAh), BP-284 (3210mAh)
Speaker Microphone	HM-222
Headset	HS-94, HS-95, HS-97
Belt Clip	MB-133, MB-136
Belt Hangers	MB-96F, MB-96LF, MB-96N
Battery Charger	BC-219 Desktop Charger, BC-214 Multi-charger
Primary User Functions of D.U.T.	Transmit and receive voice & data

Photograph of D.U.T



< D.U.T.'s front view with battery >



< D.U.T.'s rear view without battery and antenna >

2.3. LIST OF D.U.T.'S ACCESSORIES:



Li-ion Chargeable Battery (M/N: BP-283 Li-ion, 7.2V, 2010mAh)



Li-ion Chargeable Battery (M/N: BP-284 Li-ion, 7.2V, 3210mAh)



FA-S81V, FA-S82V, FA-S83V Antenna



FA-S81VS, FA-S82VS, FA-S83VS Antenna



Cut Antenna FA-S67VC 150-174MHz

2.4. SPECIFIC OPERATING AND TEST CONDITIONS

Channel Frequencies selected for test per IEEE Std. 1528:2013 Section 6.3.5

Antenna Band 136-174 MHz	Frequency			# Test Channels	Test Frequencies (MHz)				
	Low	High	Center		F1	F2	F3	F4	F5
FA-S81V	136	150	143	3	136	143	150		
FA-S82V	150	162	156	3	150	156	162		
FA-S83V	160	174	167	3	160	167	174		
FA-S81VS	136	150	143	3	136	143	150		
FA-S82VS	150	162	156	3	150	156	162		
FA-S83VS	160	174	167	3	160	167	174		
FA-S67VC	150	174	162	5	150	156	162	168	174
FA-S67VC	150	174	162	5	150	156	162	168	174
FA-S67VC	150	174	162	5	150	156	162	168	174
FA-S67VC	150	174	162	5	150	156	162	168	174

1. Test Channel Reduction may be applied if SAR < 50% SAR limit for Cut Antenna per FCC KDB 133795.
2. Test Reduction may be applied per FCC KDB 643646 D01 SAR Test for PTT Radios v01r01.
3. Head SAR measured with a 25mm separation distance.
4. When multiple standard batteries are supplied with a radio, the battery with the highest capacity is considered the default battery for making Head SAR measurements.
5. For Body worn configurations, the thinnest battery usually provides the least separation distance to the phantom and is considered to provide the highest SAR. Other battery holders may be considered depending on the hot spot location and angling of the antenna feed point.
6. If SAR > 50% SAR limit, then additional batteries may have to be evaluated.
7. SAR scaling to duty factor (50%) and max power of tune-up procedure is required.
8. 2.04mW Bluetooth module was paired with a BT Headset receiver and continuously operated for simultaneous transmitter operation. However, the 2.04 mw Bluetooth transmit power is much below the category exclusion and exemption limits from routine evaluation for FCC and Industry Canada and no SAR evaluation is required for this transmission mode.

EXHIBIT 3. SUMMARY OF TEST RESULTS

3.1. LOCATION OF TESTS

All of the measurements described in this report were performed at UltraTech Group of Labs located at:

3000 Bristol Circle, the city of Oakville, Province of Ontario, Canada.

All measurements were performed in UltraTech's shielded chamber, 16' x 13' x 8'.

3.2. APPLICABILITY & SUMMARY OF SAR RESULTS

The SAR contribution from the Bluetooth module was not carried out in post processing since the output power of the module at 2.04mw is much below the category exclusion and exemption thresholds from routine evaluation for both the FCC and Industry Canada requirements.

The maximum peak spatial – 1g average SAR measured was found to be **1.42W/Kg** for head configuration and **2.02W/Kg** for body configuration with 50% usage-based time-averaging applied for PTT device. **The limit for SAR 1 gram average peak spatial average is 8W/Kg for occupational/controlled exposure.**

For body configuration tests, all the supplied additional body-worn accessories were checked through pre-scans and confirmed that those options were not affecting SAR compliance. Therefore, the final evaluation for body configuration was performed only with M/N: MB-133 Belt Clip, M/N HM-222 Speaker Microphone, M/N: BP-283 Li-ion rechargeable battery packs.

Reported¹ SAR for HEAD (scaled for 50% duty cycle for PTT Radio)

Antenna	Power (dBm)	CH	CH. Freq (MHz)	HEAD SAR1g (W/Kg)
				BP-284 3210mAh
FA-S81V 136-150 MHz	37.02	1	136	0.52
	36.97	2	143	1.42
	37.03	3	150	0.30
FA-S82V 150-162 MHz	37.03	3	150	0.85
	37.03	4	156	1.18
	37.07	6	162	0.42
FA-S83V 160-174 MHz	37.05	5	160	0.59
	37.12	7	167	0.23
	37.12	8	174	0.08
FA-S81VS 136-150 MHz	37.02	1	136	0.73
	36.97	2	143	0.67
	37.03	3	150	1.09
FA-S82VS 150-162 MHz	37.03	3	150	0.29
	37.03	4	156	0.49
	37.07	6	162	0.10
FA-S83VS 160-174 MHz	37.05	5	160	0.16
	37.12	7	167	0.77
	37.12	8	174	0.21

¹ Reported SAR is scaled for tune up procedure and 50% duty cycle for PTT Radio

Cut Antenna	Power (dBm)	CH	CH. Freq	HEAD SAR1g (W/Kg)
			(MHz)	BP-284 3210mAh
FA-S67VC 150MHz	37.03	3	150	0.35
	37.03	4	156	0.69
	37.05	6	162	0.53
	37.07	8	168	0.30
	37.13	9	174	0.20
FA-S67VC 155MHz	37.03	3	150	0.21
	37.03	4	156	0.44
	37.05	6	162	0.71
	37.07	8	168	0.58
	37.13	9	174	0.39
FA-S67VC 160MHz	37.03	3	150	0.10
	37.03	4	156	0.20
	37.05	6	162	0.40
	37.07	8	168	0.85
	37.13	9	174	0.79
FA-S67VC 165MHz	37.03	3	150	0.06
	37.03	4	156	0.12
	37.05	6	162	0.22
	37.07	8	168	0.42
	37.13	9	174	0.81
FA-S67VC 170MHz	37.03	3	150	0.06
	37.03	4	156	0.10
	37.05	6	162	0.17
	37.07	8	168	0.30
	37.13	9	174	0.70

Reported¹ SAR for Body (scaled for 50% duty cycle for PTT Radio)

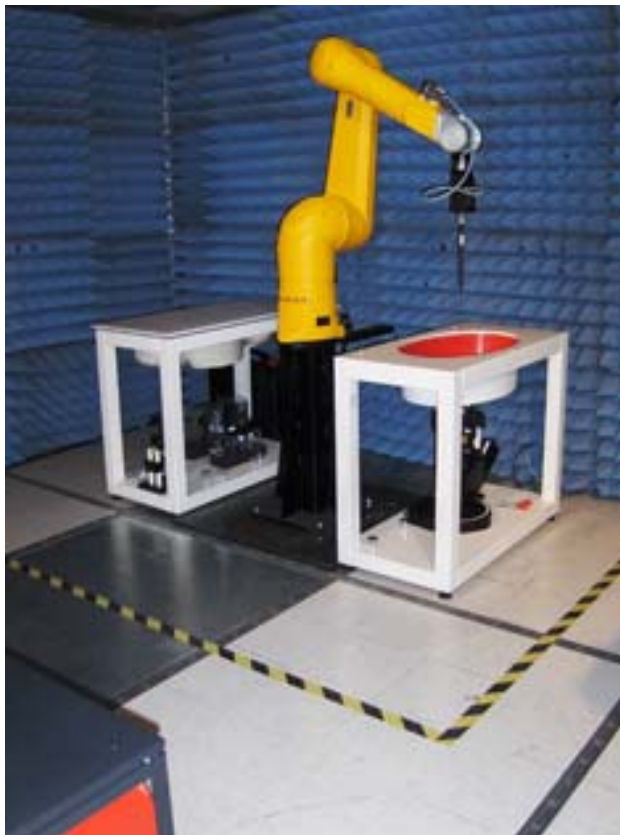
Antenna	Power (dBm)	CH	CH. Freq	BODY SAR1g (W/Kg)
			(MHz)	BP-283 2010mAh
FA-S81V 136-150 MHz	37.02	1	136	1.19
	36.97	2	143	0.92
	37.03	3	150	0.26
FA-S82V 150-156 MHz	37.03	3	150	2.02
	37.03	4	156	0.85
	37.07	6	162	0.33
FA-S83V 160-174 MHz	37.05	5	160	1.98
	37.12	7	167	1.35
	37.12	8	174	0.57
FA-S81VS 136-150 MHz	37.02	1	136	0.17
	36.97	2	143	1.28
	37.03	3	150	0.14
FA-S82VS 150-162 MHz	37.03	3	150	0.81
	37.03	4	156	0.47
	37.07	6	162	0.11
FA-S83VS 160-174 MHz	37.05	5	160	0.27
	37.12	7	167	0.88
	37.12	8	174	0.14

¹ Reported SAR is scaled for tune up procedure and 50% duty cycle for PTT Radio

Cut Antenna	Power (dBm)	CH	CH. Freq	BODY SAR1g (W/Kg)
			(MHz)	BP-283 2010mAh
FA-S67VC 150MHz	37.03	3	150	0.90
	37.03	4	156	0.00
	37.05	6	162	0.47
	37.07	8	168	0.00
	37.13	9	174	0.11
FA-S67VC 155MHz	37.03	3	150	0.33
	37.03	4	156	0.00
	37.05	6	162	0.80
	37.07	8	168	0.00
	37.13	9	174	0.31
FA-S67VC 160MHz	37.03	3	150	0.16
	37.03	4	156	0.00
	37.05	6	162	0.66
	37.07	8	168	0.00
	37.13	9	174	0.86
FA-S67VC 165MHz	37.03	3	150	0.11
	37.03	4	156	0.00
	37.05	6	162	0.41
	37.07	8	168	0.00
	37.13	9	174	1.15
FA-S67VC 170MHz	37.03	3	150	0.09
	37.03	4	156	0.00
	37.05	6	162	0.34
	37.07	8	168	0.00
	37.13	9	174	1.17

EXHIBIT 4. SAR SYSTEM CONFIGURATION

4.1. DASY5 SYSTEM OVERVIEW



DASY5 System Specification

Positioning Equipment	Computer
DASAY5 Measurement Server Data Acquisition Electronics (DAE) Light Beam Unit Device Holder Robot (STAUBLI TX90)	Type: HP Compaq dc7800p Convertible CPU : Intel® Core™ 2 Duo E8500 Memory : 2GB RAM Operating System : Windows XP Professional Monitor : HP L1950g LCD

1. DASY5 Measurement Server

The DASY5 measurement server is based on a PC/104 CPU board with a 400MHz Intel ULV Celeron, 128MB chipdisk and 128MB RAM. The necessary circuits for communication with the DAE4 (or DAE3) electronics box, as well as the 16 bit AD converter system for optical detection and digital I/O interface are contained on the DASY5 I/O board, which is directly connected to the PC/104 bus of the CPU board.

The measurement server performs all real-time data evaluation of field measurements and surface detection, controls robot movements and handles safety operation. The PC operating system cannot interfere with these time critical

processes. All connections are supervised by a watchdog, and disconnection of any of the cables to the measurement server will automatically disarm the robot and disable all program-controlled robot movements. Furthermore, the measurement server is equipped with an expansion port which is reserved for future applications. Please note that this expansion port does not have a standardized pinout, and therefore only devices provided by SPEAG can be connected. Devices from any other supplier could seriously damage the measurement server.

2. Data Acquisition Electronics

The data acquisition electronics (DAE4 or DAE3) consist of a highly sensitive electrometer-grade preamplifier with auto-zeroing, a channel and gain-switching multiplexer, a fast 16 bit AD-converter and a command decoder with a control logic unit. Transmission to the measurement server is accomplished through an optical downlink for data and status information, as well as an optical uplink for commands and the clock.

The mechanical probe mounting device includes two different sensor systems for frontal and sideways probe contacts. They are used for mechanical surface detection and probe collision detection.

The input impedance of both the DAE4 as well as of the DAE3 box is 200M Ω ; the inputs are symmetrical and floating. Common mode rejection is above 80 dB.

3. Dosimetric Probes

These probes are specially designed and calibrated for use in liquids with high permittivity. They should not be used in air, since the spherical isotropy in air is poor (-2 dB). The dosimetric probes have special calibrations in various liquids at different frequencies.



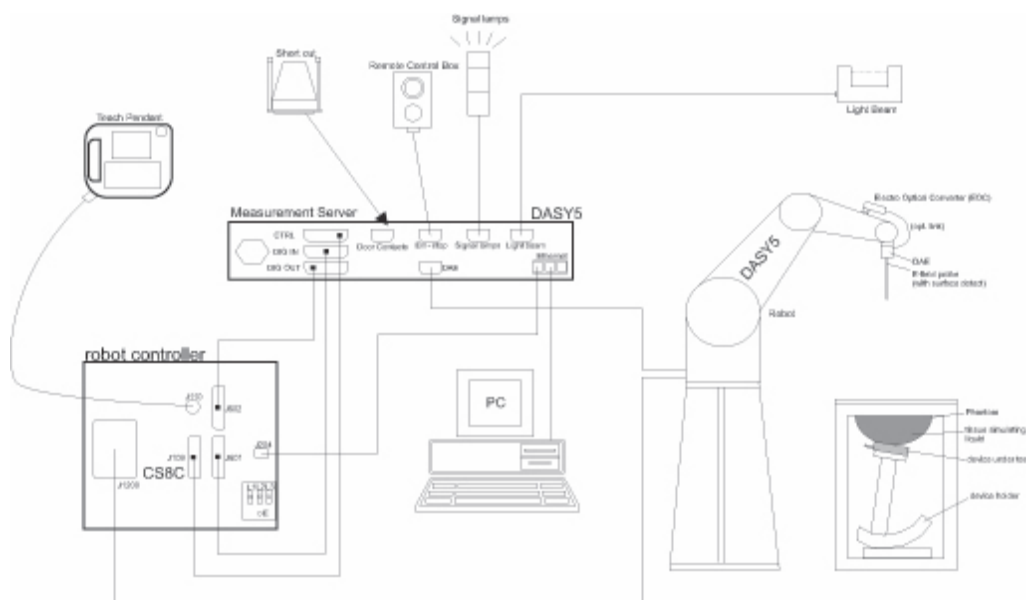
ES3DV3 Isotropic E-Filed Probe

Construction	Symmetrical design with triangular core Interleaved sensors Built-in shielding against static charges PEEK enclosure material (resistant to organic solvents, e.g., DGBE)
Calibration	Basic Broad Band Calibration in air Conversion Factors (CF) for HSL 900 and HSL 1750 Additional CF for other liquids and frequencies
Frequency	10 MHz to 4 GHz Linearity ± 0.2 dB (30 MHz to 4 GHz)
Directivity	± 0.2 dB in HSL (rotation around probe axis) ± 0.3 dB in tissue material (rotation normal to probe axis)
Dynamic Range	5 μ W/g to > 100 mW/g Linearity: ± 0.2 dB
Dimensions	Overall length: 330 mm (Tip: 20 mm) Tip diameter: 3.9 mm (Body: 12 mm) Distance from probe tip to dipole centers: 2.0 mm

EX3DV4 Isotropic E-Filed Probe

Construction	Symmetrical design with triangular core Built-in shielding against static charges PEEK enclosure material (resistant to organic solvents, e.g., DGBE)
Calibration	Basic Broad Band Calibration in air Conversion Factors (CF) for HSL 900 and HSL 1750 Additional CF for other liquids and frequencies
Frequency	10 MHz to > 6 GHz Linearity: ± 0.2 dB (30 MHz to 6 GHz)
Directivity	± 0.3 dB in HSL (rotation around probe axis) ± 0.5 dB in tissue material (rotation normal to probe axis)
Dynamic Range	10 μ W/g to > 100 mW/g Linearity: ± 0.2 dB (noise: typically < 1 μ W/g)
Dimensions	Overall length: 330 mm (Tip: 20 mm) Tip diameter: 2.5 mm (Body: 12 mm) Typical distance from probe tip to dipole centers: 1 mm

DASY5 SAR SYSTEM block diagram



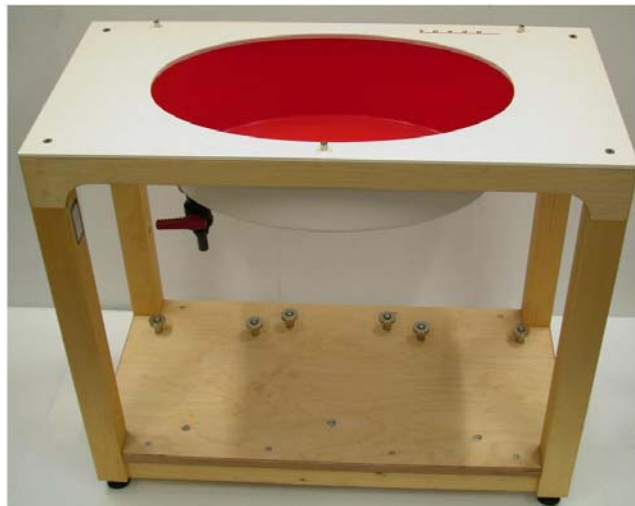
4.2. SAR TEST PHANTOMS

SAM Twin Phantom



For Head mounted devices placed next to the ear, the phantom used in the evaluation of the RF exposure of the user of the wireless device is an IEEE P1528 compliant SAM Twin phantom, shaped like a human head and filled with a mixture simulating the dielectric characteristics of the brain. A left sided head and a right sided head are evaluated to determine the worst case orientation for SAR.

ELI 4.0 Phantom

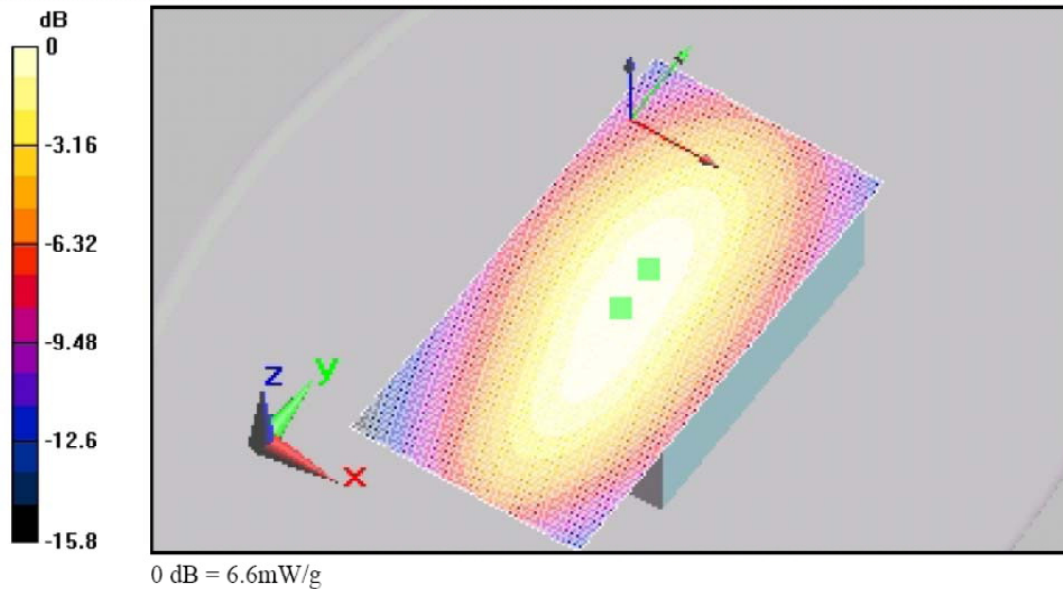


For body mounted and frontal held push-to-talk devices, an IEC 62209-2 compliant Oval Flat Phantom (ELI 4.0) with a base plate thickness of 2mm is used.

EXHIBIT 5. SAR DATA ACQUISITION METHODOLOGY

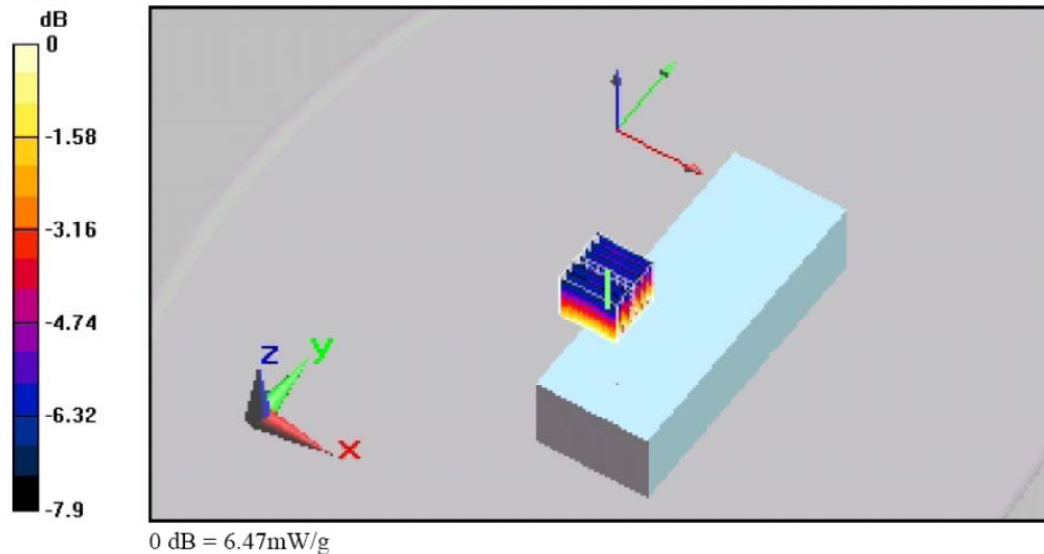
5.1. SAR MEASUREMENT PROCEDURE

The goal of the measurement process is to scan the phantom over a selected area in order to find the region of highest levels of RF energy and then to obtain a single value for the peak spatial-average of SAR over a volume that would contain one gram (in the shape of a cube) of biological tissue. The test procedure, of course, measures SAR in the simulated tissue.



< Area scan >

The software requests the user to move the probe to locations at two extreme corners of a rectangle that encloses the area to be scanned. An arbitrary origin and the spatial resolution for the scan are also specified. Under program control, the scan is performed automatically by the robot-guided probe.



< Zoom Scan >

The DASY5 software includes all numerical procedures necessary to evaluate the spatial peak SAR values.

Based on the Draft: SCC-34, SC-2, WG-2 - Computational Dosimetry, IEEE P1529/D0.0 (Draft Recommended Practice for Determining the Spatial-Peak Specific Absorption Rate (SAR) Associated with the Use of Wireless Handsets - Computational Techniques), a new algorithm has been implemented. The spatial-peak SAR can be computed over any required mass.

The base for the evaluation is a "cube" measurement in a volume of (30mm)³ (7x7x7 points). The measured volume must include the 1 g and 10 g cubes with the highest averaged SAR values. For that purpose, the center of the measured volume is aligned to the interpolated peak SAR value of a previously performed area scan. If the 10g cube or both cubes are not entirely inside the measured volumes, the system issues a warning regarding the evaluated spatial peak values within the postprocessing engine (SEMCAD X). This means that if the measured volume is shifted, higher values might be possible. To get the correct values you can use a finer measurement grid for the area scan. In complicated field distributions, a large grid spacing for the area scan might miss some details and give an incorrectly interpolated peak location.

The entire evaluation of the spatial peak values is performed within the postprocessing engine (SEMCAD X). The system always gives the maximum values for the 1 g and 10 g cubes. The algorithm to find the cube with highest averaged SAR is divided into the following stages:

1. extraction of the measured data (grid and values) from the Zoom Scan
2. calculation of the SAR value at every measurement point based on all stored data (A/D values and measurement parameters)
3. generation of a high-resolution mesh within the measured volume
4. interpolation of all measured values from the measurement grid to the high-resolution grid
5. extrapolation of the entire 3-D field distribution to the phantom surface over the distance from sensor to surface
6. calculation of the averaged SAR within masses of 1 g and 10 g

The significant parts are outlined in more detail within the following sections.

Interpolation, Extrapolation and Detection of Maxima

The probe is calibrated at the center of the dipole sensors which is located 1 to 2.7mm away from the probe tip. During measurements, the probe stops shortly above the phantom surface, depending on the probe and the surface detecting system. Both distances are included as parameters in the probe configuration file. The software always knows exactly how far away the measured point is from the surface. As the probe cannot directly measure at the surface, the values between the deepest measured point and the surface must be extrapolated.

In DASY5, the choice of the coordinate system defining the location of the measurement points has no influence on the uncertainty of the interpolation, Maxima Search and extrapolation routines. The interpolation, extrapolation and maximum search routines are all based on the modified Quadratic Shepard's method.

Thereby, the interpolation scheme combines a least-square fitted function method and a weighted average method which are the two basic types of computational interpolation and approximation. The DASY5 routines construct a once-continuously differentiable function that interpolates the measurement values as follows:

- For each measurement point a trivariate (3-D) / bivariate (2-D) quadratic is computed. It interpolates the measurement values at the data point and forms a least-square fit to neighboring measurement values.
- the spatial location of the quadratic with respect to the measurement values is attenuated by an inverse distance weighting. This is performed since the calculated quadratic will fit measurement values at nearby points more accurate than at points located further away.
- After the quadratics are calculated for at all measurement points, the interpolating function is calculated as a weighted average of the quadratics.

There are two control parameters that govern the behavior of the interpolation method. One specifies the number of measurement points to be used in computing the least-square fits for the local quadratics. These measurement points are the ones nearest the input point for which the quadratic is being computed. The second parameter specifies the number of measurement points that will be used in calculating the weights for the quadratics to produce the final function. The input data points used there are the ones nearest the point at which the interpolation is desired. Appropriate defaults are chosen for each of the control parameters

The trivariate quadratics that have been previously computed for the 3-D interpolation and whose input data are at the closest distance from the phantom surface, are used in order to extrapolate the fields to the surface of the phantom.

In order to determine all the field maxima in 2-D (Area Scan) and 3-D (Zoom Scan), the measurement grid is refined by a default factor of 10 and the interpolation function is used to evaluate all field values between corresponding measurement points. Subsequently, a linear search is applied to find all the candidate maxima. In a last step, non physical maxima are removed and only those maxima which are within 2 dB of the global maximum value are retained.

Important: To be processable by the interpolation/extrapolation scheme, the Area Scan requires at least 6 measurement points. The Cube Scan requires at least 10 measurement points to allow an application of these algorithms.

In the Area Scan, the gradient of the interpolation function is evaluated to find all the extrema of the SAR distribution. The uncertainty on the locations of the extrema is less than 1/20 of the grid size. Only local maxima within -2 dB of the global maximum are searched and passed for the Cube Scan measurement.

In the Cube Scan, the interpolation function is used to extrapolate the Peak SAR from the lowest measurement points to the inner phantom surface (the extrapolation distance). The uncertainty increases with the extrapolation distance. To keep the uncertainty within 1% for the 1 g and 10 g cubes, the extrapolation distance should not be larger than 5mm.

Averaging and Determination of Spatial Peak SAR

The interpolated data is used to average the SAR over the 1g and 10g cubes by spatially discretizing the entire measured volume. The resolution of this spatial grid used to calculate the averaged SAR is 1mm or about 42875 interpolated points. The resulting volumes are defined as cubical volumes containing the appropriate tissue parameters that are centered at the location. The location is defined as the center of the incremental volume (voxel).

The spatial-peak SAR must be evaluated in cubical volumes containing a mass that is within 5% of the required mass. The cubical volume centered at each location, as defined above, should be expanded in all directions until the desired value for the mass is reached, with no surface boundaries of the averaging volume extending beyond the outermost surface of the considered region. In addition, the cubical volume should not consist of more than 10% of air. If these conditions are not satisfied then the center of the averaging volume is moved to the next location. Otherwise, the exact size of the final sampling cube is found using an inverse polynomial approximation algorithm, leading to results with improved accuracy. If one boundary of the averaging volume reaches the boundary of the measured volume during its expansion, it will not be evaluated at all. Reference is kept of all locations used and those not used for averaging the SAR. All average SAR values are finally assigned to the centered location in each valid averaging volume.

All locations included in an averaging volume are marked to indicate that they have been used at least once. If a location has been marked as used, but has never been assigned to the center of a cube, the highest averaged SAR value of all other cubical volumes which have used this location for averaging, is assigned to this location. Only those locations that are not part of any valid averaging volume should be marked as unused. For the case of an unused location, a new averaging volume must be constructed which will have the unused location centered at one surface of the cube. The remaining five surfaces are expanded evenly in all directions until the required mass is enclosed, regardless of the amount of included air. Of the six possible cubes with one surface centered on the unused location, the smallest cube is used, which still contains the required mass.

If the final cube containing the highest averaged SAR touches the surface of the measured volume, an appropriate warning is issued within the postprocessing engine.

Evaluation Errors

4. Cube shape

The mentioned procedures search for the maximum averaged 1g and 10g volumes of cubical shape according to the ANSI and ICNIRP standard. A density of 1000 kg/m³ is used to represent the head tissue density and not the tissue simulating liquid density.

5. Extrapolation

For the extrapolation the distance must be specified in the Area Scan and Zoom Scan Jobs. The distance is defined as the distance between the probe sensor center and the phantom surface. The recommended distance is 4-5 mm.

6. Boundary effects

The dosimetric probes are calibrated in a gradient field with energy flow and decay in direction of the probe axis. During calibration the probe tip is completely surrounded by the simulating solution. If the probe is used in the immediate vicinity of a media boundary, the field in the probe is altered due to interaction with the field in the boundary and the probe sensitivity changes. The influence of the boundary effect depends on the probe construction, the media parameters and the probe orientation with respect to the boundary. It disappears at a distance of 1mm (E1D-probe) to 5mm (ET3D-probes) between the probe tip and the boundary. The boundary effect must be considered in the extrapolation to the surface.

EXHIBIT 6. MEASUREMENTS, EXAMINATIONS & TEST DATA

6.1. TEST CONFIGURATIONS

D.U.T. Information		Condition	
Product Name	Icom Inc.	Robot Type	6 Axis
Model Number	IC-F3400DT	Scan Type	SAR – Area/Zoom/Att. Vs Depth
Serial Number	01000151	Measured Field	E
Frequency Band [MHz]	136-174 MHz	Phantom Type	2 _{mm} base Flat Phantom
Frequency Tested [MHz]	136, 143, 150, 156, 160, 162, 167, 168, 174 MHz	Phantom Position	Waist
Maximum Conducted Power	5W	Room Temperature [°C]	22.0 ± 1
Antenna Type	Whip Antenna, Cut Antenna	Room Humidity [%]	35 ± 10
Modulation	FM	Tissue Temperature [°C]	21.8 ± 1
Worst Case Duty Cycle	100 %		
Duty Cycle Tested	100%		
Source(or Usage)-Based Time-Average Factor	50% PTT		

Type of Tissue	Brain	Muscle
Test Frequency [MHz]	150	150
Target Conductivity [S/m]	0.76	0.80
Measured Conductivity [S/m]	0.76(+0.3%)	0.93 (-1.1%)
Target Dielectric Constant	52.3	61.9
Measured Dielectric Constant	50.5(-3.4%)	62.0 (+0.2%)
Penetration Depth (Plane Wave Excitation) [mm]	44.5	45.2
Probe Model Number	ES3DV3	ES3DV3
Probe Serial Number	3250	3250
Probe Orientation	Isotropic	Isotropic
Probe Sensor Offset [mm]	2	2
Probe Tip Diameter [mm]	4	4
Conversion Factor (γ)	7.07(±13.3%)	6.93 (±13.4%)

6.2. GENERAL TEST SETUP

Equipment Configuration

Power and signal distribution, grounding, interconnecting cabling and physical placement of equipment of a test system shall simulate the typical application and usage in so far as is practicable, and shall be in accordance with the relevant product specifications of the manufacturer.

The configuration that tends to maximize the D.U.T's emission or minimize its immunity is not usually intuitively obvious and in most instances selection will involve some trial and error testing. For example, interface cables may be moved or equipment re-orientated during initial stages of testing and the effects on the results observed.

Only configurations within the range of positions likely to occur in normal use need to be considered.

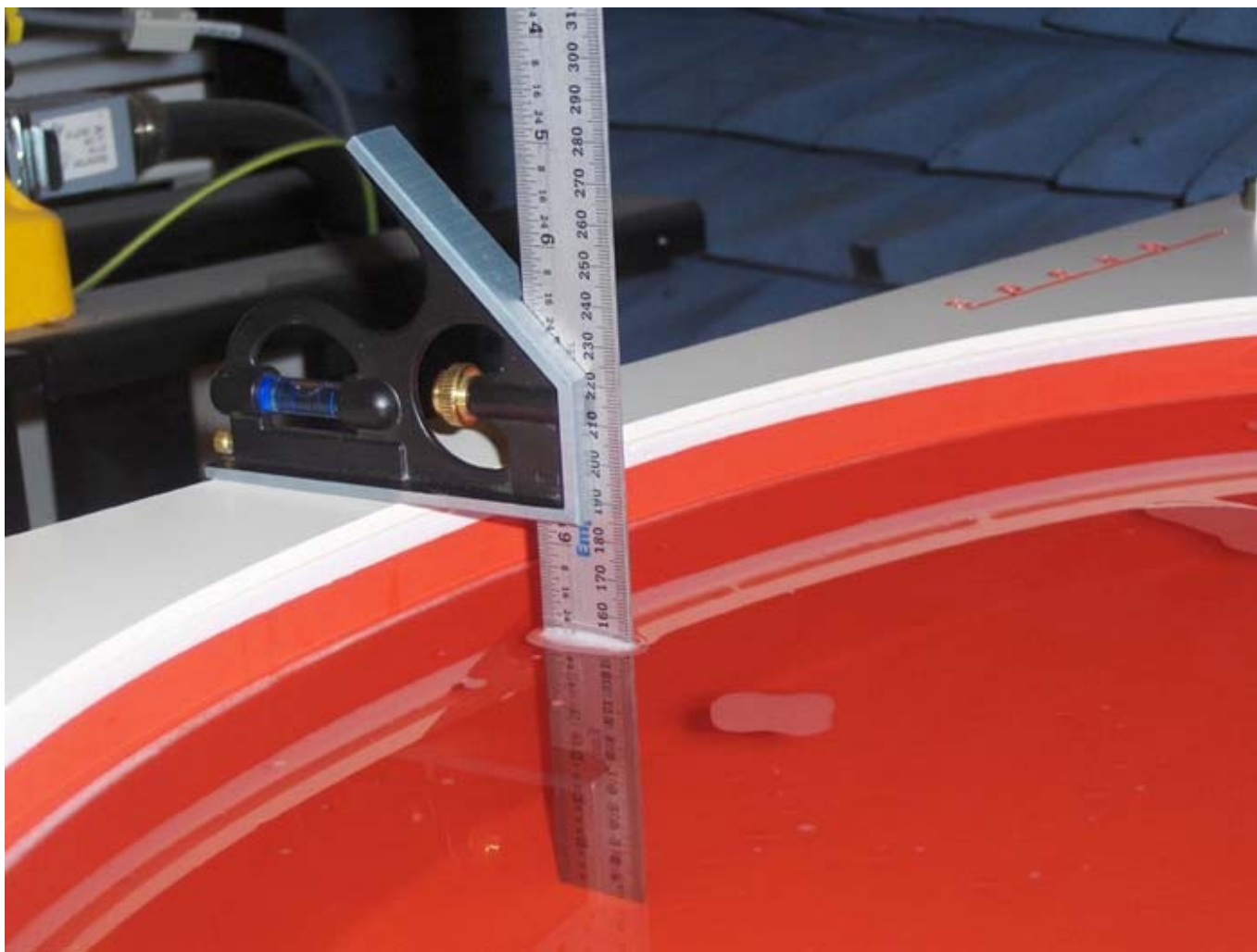
The configuration selected shall be fully detailed and documented in the test report, together with the justification for selecting that particular configuration.

Exercising Equipment

The exercising equipment and other auxiliary equipment shall be sufficiently decoupled from the D.U.T. so that the performance of such equipment does not significantly influence the test results.

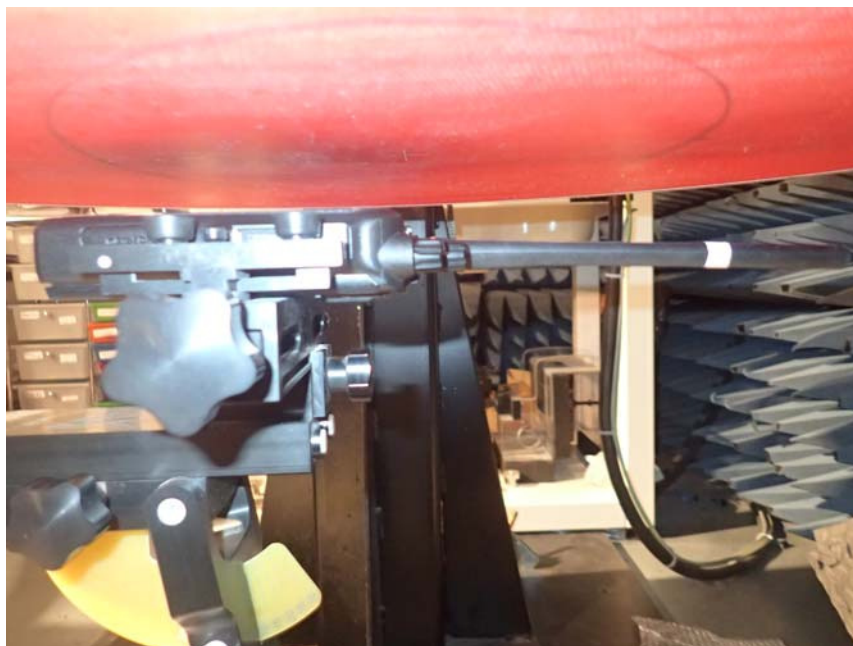
6.3. PHOTOGRAPHS OF TISSUE DEPTH AND EUT FOR HEAD AND BODY CONFIGURATION

Tissue Depth



< Phantom filled with body tissue liquid: liquid level = 150mm \pm 5mm >

Head Configuration for in front of face Position – 25mm



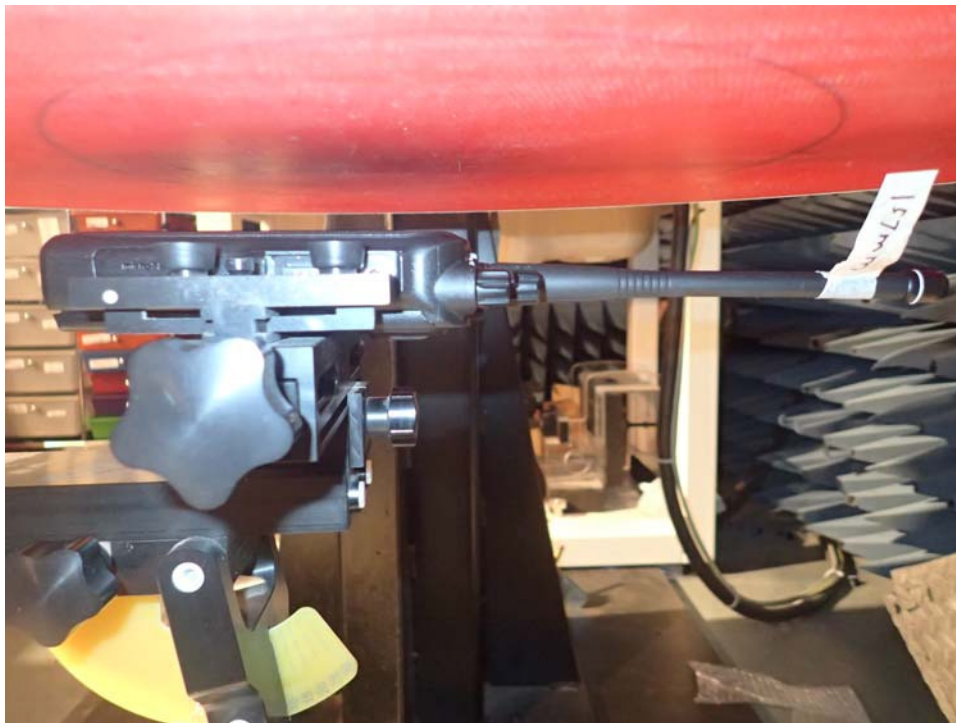
<Face Frontal Position, FA-S81V, FA-S82V, FA-S83V Antenna, BP-283 battery pack>

Remark: Distance between Front side of the EUT and the phantom = 25 mm



<Face Frontal Position, FA-S81VS, FA-S82VS, FA-S83VS Antenna, BP-283 battery pack>

Remark: Distance between Front side of the EUT and the phantom = 25 mm



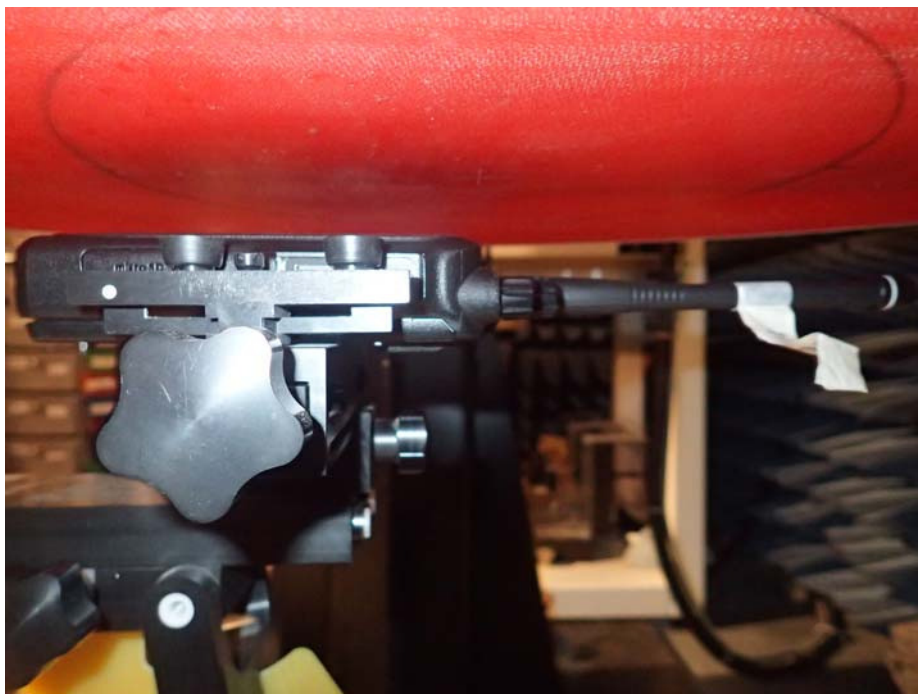
<Face Frontal Position, FA-S67VC 150MHz, BP-283 battery pack>

Remark: Distance between Front side of the EUT and the phantom = 25 mm



<Face Frontal Position, FA-S67VC 155MHz, BP-283 battery pack>

Remark: Distance between Front side of the EUT and the phantom = 25 mm



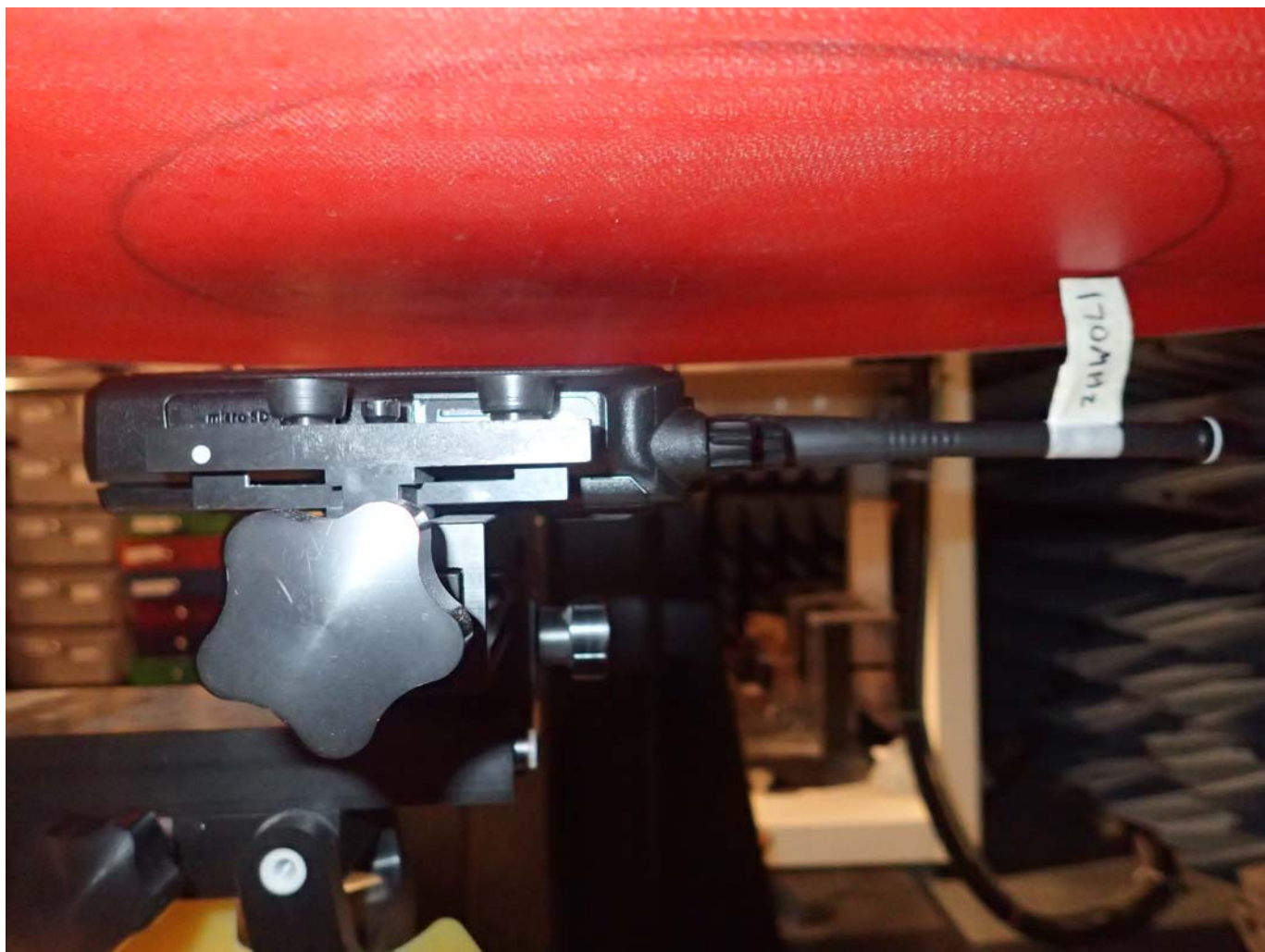
<Face Frontal Position, FA-S67VC 160MHz, BP-283 battery pack>

Remark: Distance between Front side of the EUT and the phantom = 25 mm



<Face Frontal Position, FA-S67VC 165MHz, BP-283 battery pack>

Remark: Distance between Front side of the EUT and the phantom = 25 mm



<Face Frontal Position, FA-S67VC 170MHz, BP-283 battery pack>

Remark: Distance between Front side of the EUT and the phantom = 25 mm

Body Configuration - 0mm



< Belt Clip Touch Position FA-S81V, FA-S82V, FA-S83V Antenna, BP-283 battery pack >

Remark: Distance between Back side of the EUT and the phantom = 0 mm



< Belt Clip Touch Position FA-S81VS, FA-S82VS, FA-S83VS Antenna, BP-283 battery pack >

Remark: Distance between Back side of the EUT and the phantom = 0 mm



< Belt Clip Touch Position FA-S67VC 150MHz, BP-283 battery pack >

Remark: Distance between Back side of the EUT and the phantom = 0 mm



< Belt Clip Touch Position FA-S67VC 155MHz, BP-283 battery pack >

Remark: Distance between Back side of the EUT and the phantom = 0 mm



< Belt Clip Touch Position FA-S67VC 160MHz, BP-283 battery pack >

Remark: Distance between Back side of the EUT and the phantom = 0 mm



< Belt Clip Touch Position FA-S67VC 165MHz, BP-283 battery pack >

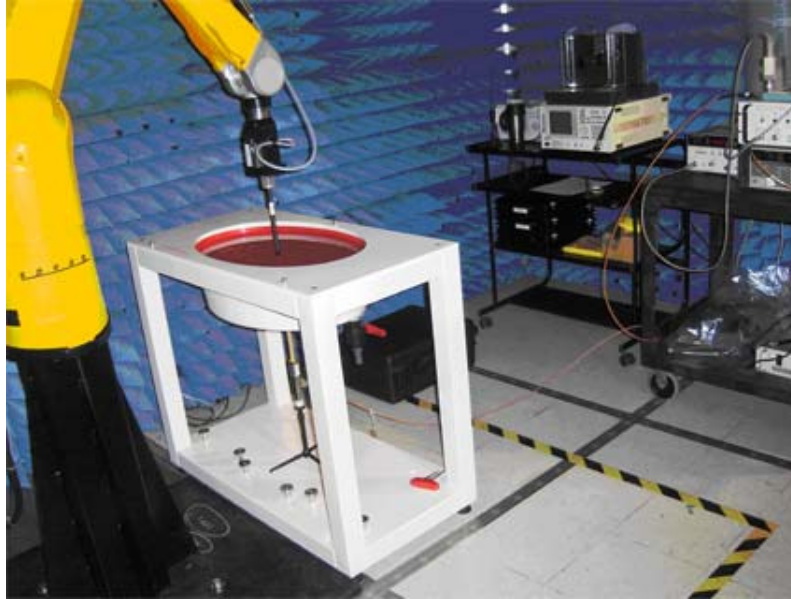
Remark: Distance between Back side of the EUT and the phantom = 0 mm



< Belt Clip Touch Position FA-S67VC 170MHz, BP-283 battery pack >

Remark: Distance between Back side of the EUT and the phantom = 0 mm

EXHIBIT 7. SAR MEASUREMENT SYSTEM VERIFICATION



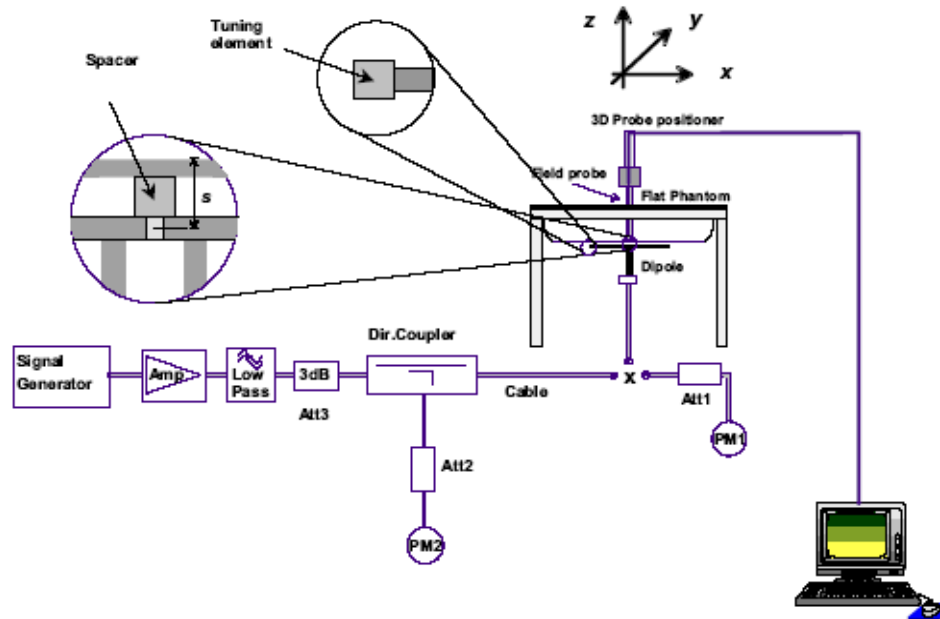
7.1. STANDARD SOURCE

A half-wave dipole is positioned below the bottom of the phantom and centered with its axis parallel to the longest side of the phantom. The distance between the liquid filled phantom bottom surface and the center of the dipole axis, s , is chosen as specified IEEE 1528 at the specific test frequency (i.e. 15 mm at 835 MHz). A low loss and low dielectric constant spacer is used to establish the correct distance between the top surface of the dipole and the bottom surface of the phantom.



7.2. STANDARD SOURCE INPUT POWER MEASUREMENT

The system validation is performed as shown below or in Figure 7.1 in IEEE 1528.



First the power meter PM1 (including attenuator Att1) is connected to the cable to measure the forward power at the location of the dipole connector (X). The signal generator is adjusted for the desired forward power at the dipole connector (taking into account the attenuation of Att1) as read by power meter PM2. After connecting the cable to the dipole, the signal generator is readjusted for the same reading at power meter PM2. If the signal generator does not allow adjustment in 0.01dB steps, the remaining difference at PM2 must be taken into consideration. PM3 records the reflected power from the dipole to ensure that the value is not changed from the previous value. The reflected power was verified to be at least 20dB below the forward power.

7.3. SYSTEM VALIDATION PROCEDURE

A complete 1g-averaged SAR measurement is performed. The measured 1g-averaged SAR value is normalized to a forward power of 1W to a half-wave dipole and compared with the reference SAR value for the reference dipole and flat phantom shown in columns 2 and 3 of Table 7.1 in IEEE 1528.

7.4. VERIFICATION RESULTS

*Dipole CLA150 – SN: 4006 Reference SAR values**

		SAR1g			SAR10g		
	Frequency (MHz)	Reference (W/g)	Measured (W/g)	Delta %	Reference (W/g)	Measured (W/g)	Delta %
Head	150	3.74	3.68	-1.60%	2.5	2.42	-3.20%
Body	150	3.85	3.8	-1.30%	2.59	2.48	-4.25%

* SAR values are normalized to a forward power of 1 W.

Verification at 150 MHz Head

Test Laboratory: Ultratech Group of Labs

File Name: [Sys.Ver.Check-D150MHz ICOM-435Q Head.da52:0](#)

DUT: CLA-150; Type: CLA-150; Serial: 4xxx

Communication System: UID 10000, CW; Frequency: 150 MHz; Duty Cycle: 1:1

Medium parameters used: $f = 150$ MHz; $\sigma = 0.762$ S/m; $\epsilon_r = 50.524$; $\rho = 1000$ kg/m³; Phantom section: Flat Section; Measurement Standard: DASYS (IEEE/IEC/ANSI C63.19-2007)

DASY Configuration:

- Probe: ES3DV3 - SN3250; ConvF(7.57, 7.57, 7.57); Calibrated: 3/22/2016;
- Sensor-Surface: 3mm (Mechanical Surface Detection)
- Electronics: DAE4 Sn874; Calibrated: 8/24/2015
- Phantom: ELI 4.0; Type: QD OVA 001 BB; Serial: 1057
- DASYS 52.8.8(1222); SEMCAD X 14.6.10(7331)

CLA Calibration for MSL-LF Tissue_CLA150/touch configuration, Pin=1W (ES-Probe)/Zoom Scan (7x7x7) (7x7x7)/Cube 0: Measurement grid: dx=5mm, dy=5mm, dz=5mm

Reference Value = 75.51 V/m; Power Drift = -0.11 dB

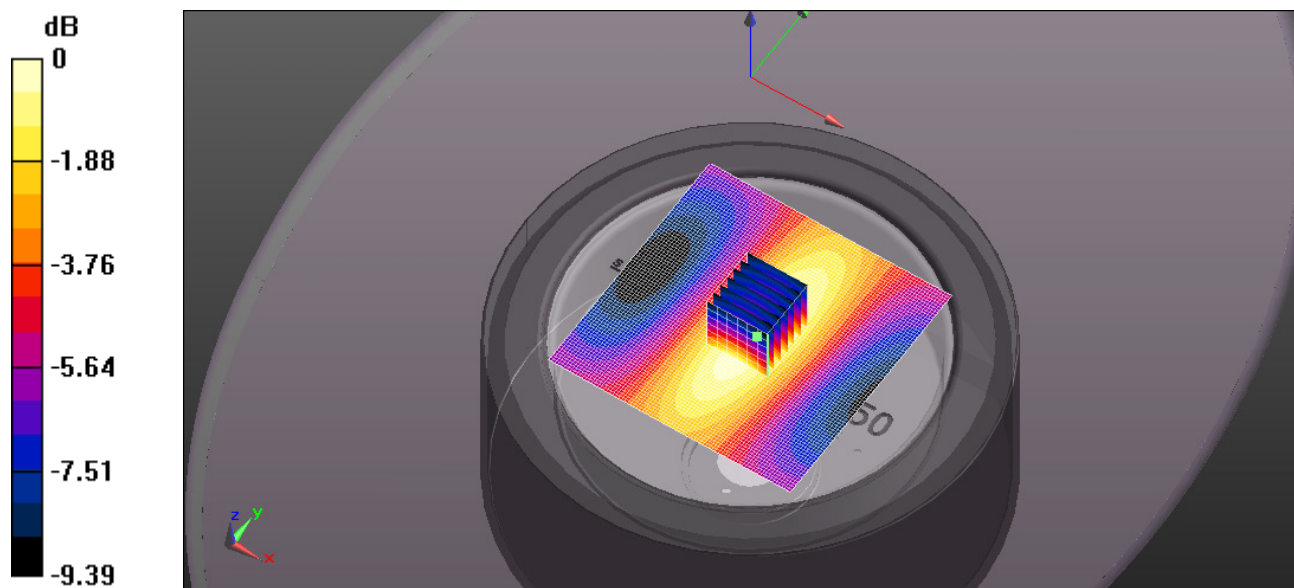
Peak SAR (extrapolated) = 6.21 W/kg

SAR(1 g) = 3.68 W/kg; SAR(10 g) = 2.42 W/kg (SAR corrected for target medium)

Maximum value of SAR (measured) = 4.36 W/kg

CLA Calibration for MSL-LF Tissue_CLA150/touch configuration, Pin=1W (ES-Probe)/Area Scan (81x81x1): Interpolated grid: dx=1.500 mm, dy=1.500 mm

Maximum value of SAR (interpolated) = 4.37 W/kg



0 dB = 4.36 W/kg = 6.40 dBW/kg

Verification at 150 MHz Body

Test Laboratory: Ultratech Group of Labs

File Name: [Sys.Ver.Check-D150MHz ICOM-435Q Body.da52:0](#)

DUT: CLA-150; Type: CLA-150; Serial: 4xxx

Communication System: UID 10000, CW; Frequency: 150 MHz; Duty Cycle: 1:1

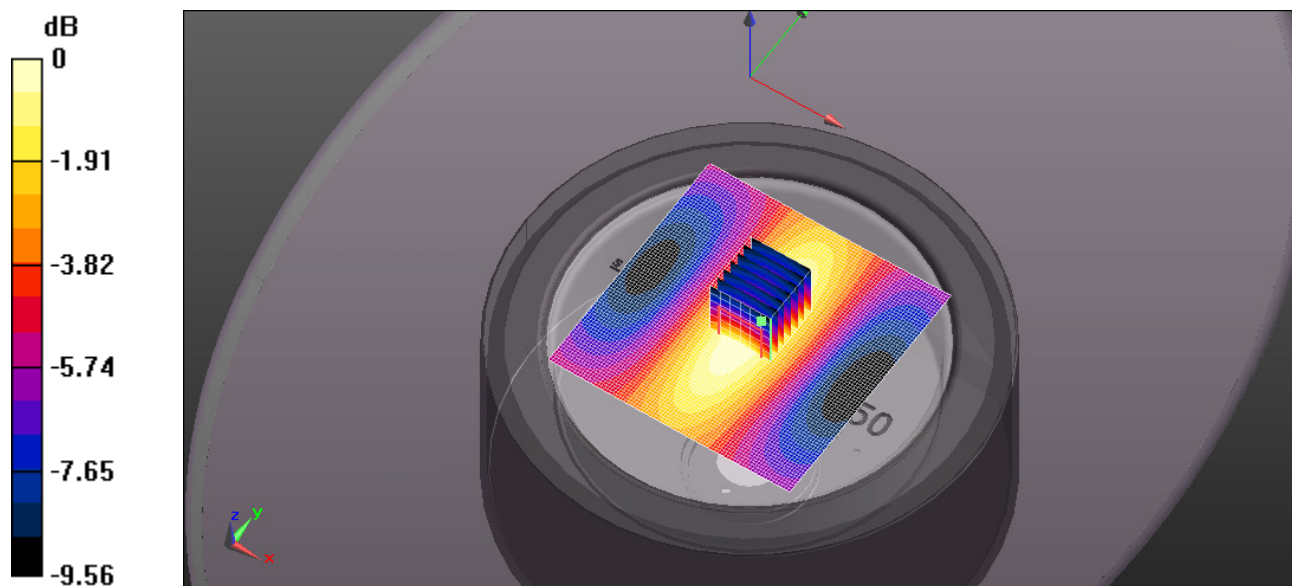
Medium parameters used: $f = 150$ MHz; $\sigma = 0.818$ S/m; $\epsilon_r = 62.016$; $\rho = 1000$ kg/m³; Phantom section: Flat Section; Measurement Standard: DASY5 (IEEE/IEC/ANSI C63.19-2007)

DASY Configuration:

- Probe: ES3DV3 - SN3250; ConvF(7.18, 7.18, 7.18); Calibrated: 3/22/2016;
- Sensor-Surface: 3mm (Mechanical Surface Detection)
- Electronics: DAE4 Sn874; Calibrated: 8/24/2015
- Phantom: ELI 4.0; Type: QD OVA 001 BB; Serial: 1057
- DASY52 52.8.8(1222); SEMCAD X 14.6.10(7331)

CLA Calibration for HSL-LF Tissue_CLA150/touch configuration, Pin=1W (ES-Probe)/Zoom Scan (7x7x7) (7x7x7)/Cube 0: Measurement grid: dx=5mm, dy=5mm, dz=5mm
Reference Value = 75.07 V/m; Power Drift = -0.07 dB
Peak SAR (extrapolated) = 6.56 W/kg
SAR(1 g) = 3.8 W/kg; SAR(10 g) = 2.48 W/kg (SAR corrected for target medium)
Maximum value of SAR (measured) = 4.55 W/kg

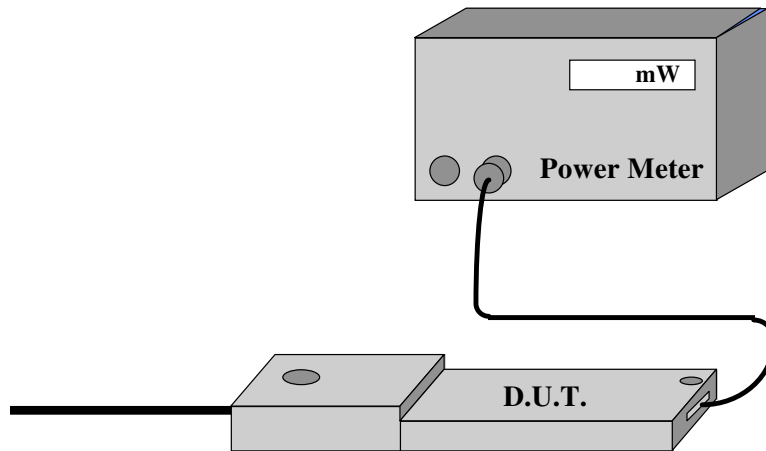
CLA Calibration for HSL-LF Tissue_CLA150/touch configuration, Pin=1W (ES-Probe)/Area Scan (81x81x1): Interpolated grid: dx=1.500 mm, dy=1.500 mm
Maximum value of SAR (interpolated) = 4.57 W/kg



0 dB = 4.55 W/kg = 6.58 dBW/kg

EXHIBIT 8. D.U.T. POWER MEASUREMENT

Whenever possible, a conducted power measurement is performed. To accomplish this, we utilize a fully charged battery, a calibrated power meter and a cable adapter provided by the manufacturer. The data of the cable and related circuit losses are also provided by the manufacturer. The power measurement is then performed across the operational band and the channel with the highest output power is recorded.



Power measurement is performed before and after the SAR to verify if the battery was delivering full power at the time of testing. A difference in output power would determine a need for battery replacement and to repeat the SAR test.

RF Conducted output power measurement

Scaling Factors user to obtain Reported SAR data are derived from the maximum tune-up power divided by the measured average conducted power. The measured SAR is only scaled up to obtain the Reported SAR.

8.1. RF CONDUCTED OUTPUT POWER MEASUREMENT

Channel Number	Frequency (MHz)	Power (dBm) BP-283
1	136	37.02
2	143	36.97
3	150	37.03
4	156	37.03
5	160	37.05
6	162	37.07
7	167	37.12
8	168	37.13
9	174	37.12

EXHIBIT 9. TISSUE DIELECTRIC PARAMETER CALIBRATION

9.1. SIMULATED TISSUE

Simulated Tissue: Suggested in a paper by George Hartsgrrove and colleagues in University of Ottawa Ref.: Bioelectromagnetics 8:29-36 (1987)

Ingredient	Quantity
Water	40.4 %
Sugar	56.0 %
Salt	2.5 %
HEC	1.0 %
Bactericide	0.1 %

Table 9.1 Example of composition of simulated tissue

This simulated tissue is mainly composed of water, sugar and salt. At higher frequencies, in order to achieve the proper conductivity, the solution does not contain salt. Also, at these frequencies, D.I. water and alcohol is preferred.

Target Frequency (MHz)	Head		Body	
	ϵ_r	σ (S/m)	ϵ_r	σ (S/m)
150	52.3	0.76	61.9	0.80
300	45.3	0.87	58.2	0.92
450	43.5	0.87	56.7	0.94
835	41.5	0.90	55.2	0.97
900	41.5	0.97	55.0	1.05
915	41.5	0.98	55.0	1.06
1450	40.5	1.20	54.0	1.30
1610	40.3	1.29	53.8	1.40
950 – 2000	40.0	1.40	53.3	1.52
2450	39.2	1.80	52.7	1.95
3000	38.5	2.40	52.0	2.73
5800	35.3	5.27	48.2	6.00

(ϵ_r = relative permittivity, σ = conductivity and $\rho = 1000 \text{ Kg/m}^3$ *)

* The actual mass density of the equivalent tissue varies based on the composition of the tissue from 990 Kg/m³ to 1,300 Kg/m³.

9.2. MEASUREMENT OF ELECTRICAL CHARACTERISTICS OF SIMULATED TISSUE

HP Dielectric Strength Probe System (open-ended coaxial transmission-line probe/sensor) was used.

Equipment set-up

The equipment consists of a probe connected to one port of a vector network analyzer. The probe is an open-ended coaxial line, as shown in Figure 9.2.1.1. Cylindrical coordinates (ρ , ϕ , z) are used where ρ is the radial distance from the axis, ϕ is the angular displacement around the axis, z is the displacement along the axis, a is the inner conductor radius, and b is the outer conductor inner radius.

The sample holder is a non-metallic container that is large compared with the size of the probe immersed in it. A probe with an outer diameter b of 2 to 4 mm is suitable for the measurement of tissue-equivalent materials in the 300 MHz to 3 GHz frequency range. This probe size is commensurate with sample volumes of 50 cc or higher. Larger probes of up to 7 mm outer diameter b may be used with larger sample volumes. A flange is typically included to better represent the infinite ground-plane assumption used in admittance calculations.

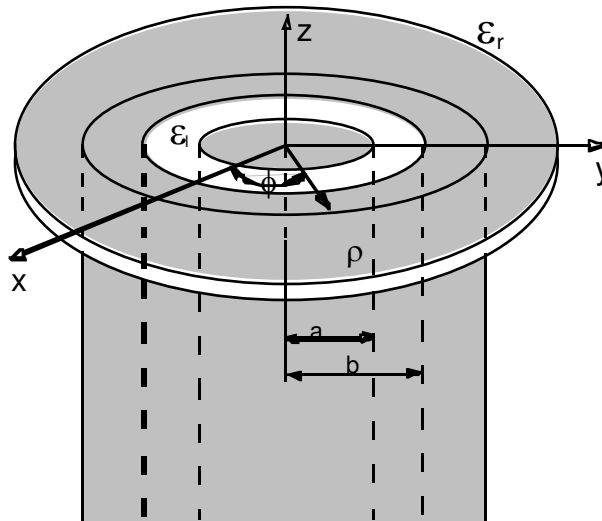


Figure 0. An open-ended coaxial probe with inner and outer radii a and b , respectively

The accuracy of the short-circuit measurement should be verified for each calibration at a number of frequencies. A short circuit can be achieved by gently pressing a piece of aluminum foil against the open end. For best electrical contact, the probe end should be flat and free of oxidation. Larger the sensors generally have better foil short-circuit repeatability. It is possible to obtain good contact with some commercial 4.6 mm probes using the metal-disk short-circuit supplied with the kit. For best repeatability, it may be necessary to press the disk by hand.

The network analyzer is configured to measure the magnitude and phase of the admittance. A one-port reflection calibration is performed at the plane of the probe by placing materials for which the reflection coefficient can be calculated in contact with the probe. Three standards are needed for the calibration, typically a short circuit, air, and de-ionized water at a well-defined temperature (other reference liquids such as methanol or ethanol may be used for calibration). The calibration is a key part of the measurement procedure, and it is therefore important to ensure that it has been performed correctly. It can be checked by re-measuring the short circuit to ensure that a reflection coefficient of $\Gamma = -1.0$ (linear units) is obtained consistently.

Measurement procedure

- a) Configure and calibrate the network analyzer and probe system.
- b) Place the sample in a non-metallic container and immerse the probe. A fixture or clamp is recommended to stabilize the probe, mounted such that the probe face is at an angle with respect to the liquid surface to minimize trapped air bubbles beneath the flange.
- c) Measure the complex admittance with respect to the probe aperture.
- d) Compute the complex relative permittivity $\epsilon_r = \epsilon'_r - j\sigma/\omega\epsilon_0$.

9.3. SIMULATED TISSUE MEASUREMENT RESULTS

Tissue calibration type	HP Dielectric Strength Probe System (M/N: 85070C)		
Tissue calibration date [MM/DD/YYYY]	7/29/2016	8/8/2016	
Tissue calibrated by	Maxavier Kee	Maxavier Kee	
Room temperature [°C]	23.4	23.4	
Room humidity [%]	32	32	
Simulated tissue temperature (°C)	22.7	22.8	
Tissue calibration frequency [MHz]	150	150	
Tissue Type	Brain	Muscle	
Target conductivity [S/m]	0.76	0.80	
Target dielectric constant	52.3	61.9	
Composition (by weight) [%]	DI Water (38.56%) Sugar (56.32%) Salt (3.95 %) HEC (0.98%) Bactericide (0.19%)	DI Water (40.8 %) Sugar (54.17 %) Salt (1.83 %) HEC (0.19 %) Bactericide (0.3%)	
Measured conductivity [S/m]	0.76(+0.3%)	0.82(+2.2%)	
Measured dielectric constant	50.5(-3.4%)	62.0(+0.2%)	
Penetration depth (plane wave excitation) [mm]	44.5	45.2	

150 MHz Tissue

	Frequency [MHz]	Meas. after 5min			DI Water at 20°C			Init. Meas.		
		ϵ'	ϵ''	σ [S/m]	ϵ'	ϵ''	σ [S/m]	ϵ'	ϵ''	σ [S/m]
Head	128.000	51.5698	104.3565	0.74	80.6904	0.5409	0.00	55.2851	109.0865	0.78
	150.000	50.5238	91.3024	0.76	80.1291	0.6385	0.01	54.8733	95.0872	0.79
	172.000	49.5318	81.4699	0.78	80.6616	0.7224	0.01	54.3497	85.7854	0.82
Body	128.000	61.7685	112.1111	0.80	80.1142	0.5329	0.00	62.6769	106.1427	0.76
	150.000	62.0162	98.0067	0.82	80.0365	0.6971	0.01	62.2447	92.1586	0.77
	172.000	61.8991	87.6011	0.84	80.0524	0.6637	0.01	62.0931	82.4788	0.79

EXHIBIT 10. SAR MEASUREMENT UNCERTAINTY

10.1. MEASUREMENT UNCERTAINTY EVALUATION FOR SAR TEST

Error Description	Uncertainty value	Prob. Dist.	Div.	(c _i) 1g	(c _i) 10g	Std. Unc. (1g)	Std. Unc. (10g)	(v _i) v _{eff}
Measurement System								
Probe Calibration	±5.5 %	N	1	1	1	±5.5 %	±5.5 %	∞
Axial Isotropy	±4.7 %	R	$\sqrt{3}$	0.7	0.7	±1.9 %	±1.9 %	∞
Hemispherical Isotropy	±9.6 %	R	$\sqrt{3}$	0.7	0.7	±3.9 %	±3.9 %	∞
Boundary Effects	±1.0 %	R	$\sqrt{3}$	1	1	±0.6 %	±0.6 %	∞
Linearity	±4.7 %	R	$\sqrt{3}$	1	1	±2.7 %	±2.7 %	∞
System Detection Limits	±1.0 %	R	$\sqrt{3}$	1	1	±0.6 %	±0.6 %	∞
Readout Electronics	±0.3 %	R	$\sqrt{3}$	1	1	±0.3 %	±0.3 %	∞
Response Time	±0.8 %	N	1	1	1	±0.5 %	±0.5 %	∞
Integration Time	±2.6 %	R	$\sqrt{3}$	1	1	±1.5 %	±1.5 %	∞
RF Ambient Noise	±3.0 %	R	$\sqrt{3}$	1	1	±1.7 %	±1.7 %	∞
RF Ambient Reflections	±3.0 %	R	$\sqrt{3}$	1	1	±1.7 %	±1.7 %	∞
Probe Positioner	±0.4 %	R	$\sqrt{3}$	1	1	±0.2 %	±0.2 %	∞
Probe Positioning	±2.9 %	R	$\sqrt{3}$	1	1	±1.7 %	±1.7 %	∞
Max. SAR Eval.	±1.0 %	R	$\sqrt{3}$	1	1	±0.6 %	±0.6 %	∞
Test Sample Related								
Device Positioning	±2.9 %	N	1	1	1	±2.9 %	±2.9 %	145
Device Holder	±3.6 %	N	1	1	1	±3.6 %	±3.6 %	5
Power Drift	±5.0 %	R	$\sqrt{3}$	1	1	±2.9 %	±2.9 %	∞
Phantom and Setup								
Phantom Uncertainty	±4.0 %	R	$\sqrt{3}$	1	1	±2.3 %	±2.3 %	∞
Liquid Conductivity (target)	±5.0 %	R	$\sqrt{3}$	0.64	0.43	±1.8 %	±1.2 %	∞
Liquid Conductivity (meas.)	±2.5 %	N	1	0.64	0.43	±1.6 %	±1.1 %	∞
Liquid Permittivity (target)	±5.0 %	R	$\sqrt{3}$	0.6	0.49	±1.7 %	±1.4 %	∞
Liquid Permittivity (meas.)	±2.5 %	N	1	0.6	0.49	±1.5 %	±1.2 %	∞
Combined Std. Uncertainty						±10.7 %	±10.5 %	387
Expanded STD Uncertainty						±21.4 %	±21.0 %	

EXHIBIT 11. ADDITIONAL TEST INSTRUMENTS LIST

Name	Type	Serial Number (SN)	Calibration Date (or Due Date)
Signal Generator	Marconi 2024	112255/164	Due Date: Aug. 27, 2017
Dipole Antenna	CLA150	4006	Dec 03, 2016
Power Meter (HP)	HP 438A	3008A06729	Due Date: Apr 29,2017
	HP 8481A	1550A15143	Due Date: Sep 29,2016
Directional Coupler (narda)	Model 3020A	35482	Cal on use
Network Analyzer (HP)	8753D	3410J02042	Due Date: Aug 26, 2017
RF Amplifier (RF Bay, Inc)	IFI MPA-12-30	21100106	N/A

EXHIBIT 12. SAR MEASUREMENT DATA

See Appendix 1.

EXHIBIT 13. SAR CALIBRATION CERTIFICATE

See Appendix 2.

EXHIBIT 14. EUT ACCESSORIES

See Appendix 3.