

BLE Antenna Specifications

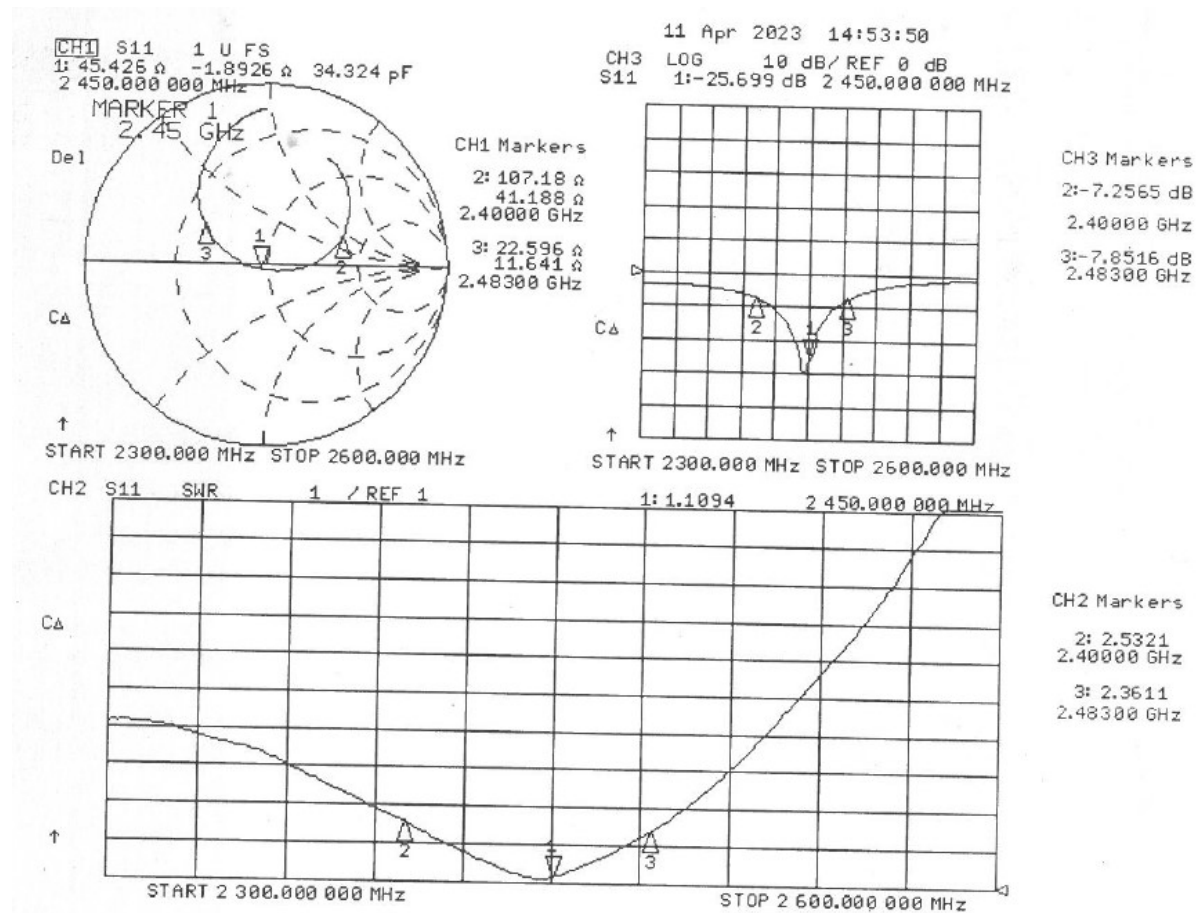
Doc Ver : Rev.1

Date : 2023-04-28

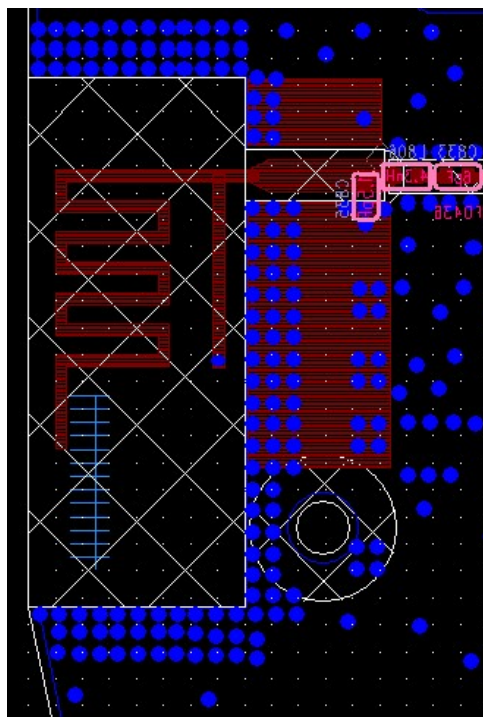
Made by H/W R&D Team, R&D Division, BG T&A Co.

- *Function : Antenna for Bluetooth communication
- *Antenna Structure : PIFA (MIFA)
- *Applied Model Name : RAD700i
- *PCB : FR-4, KB6160, D/S, 1.0T, 1/2oz (REV.C)
- *Frequency Range : 2,400 ~ 2,483MHz
- *Impedance : 50ohm nominal
- *VSWR : Less than 1:2.6 (1:1.1 @2,450MHz) → Attached #1
- *Peak(Max) Gain : -4dBi → Attached #2
- *Radiation Pattern : Omni-directional
- *Polarization : Linear

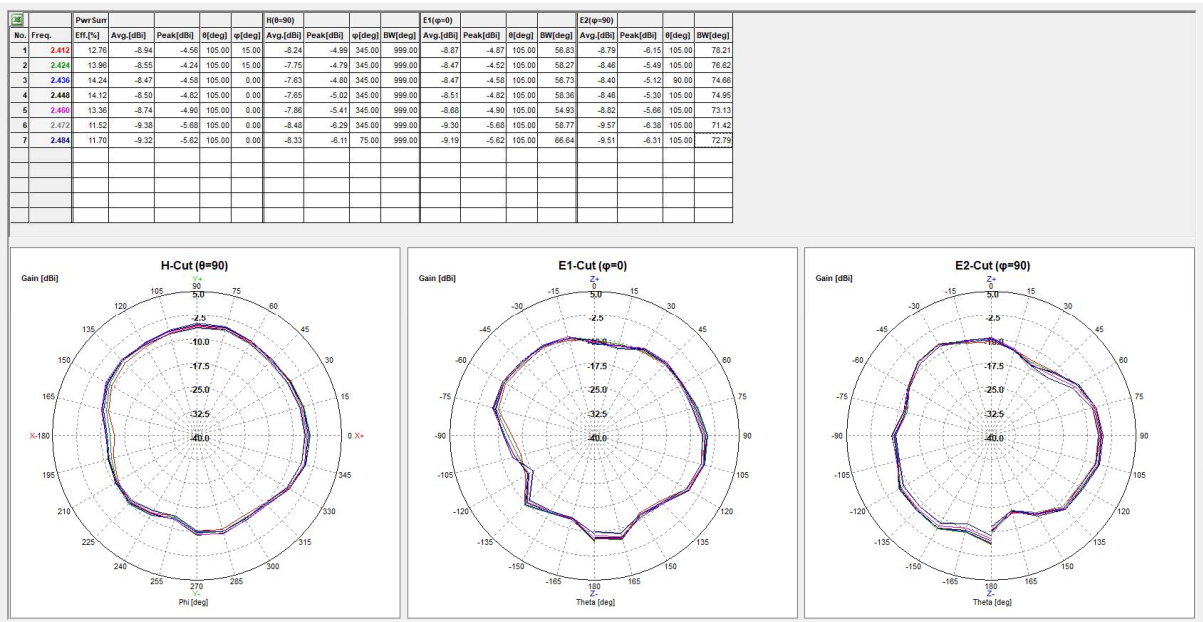
Attached #1 : VSWR



Passive Matching Values : Series 6pF – Series 4.3nH – Shunt 1.5pF – Antenna



Attached #2 : Gain & Radiation Pattern



.The End.