

Contents

Chapter 1 About the T60H424 MiniPCI Card

- 1-1 Features
- 1-2 Applications
- 1-3 Product Kit

Chapter 2 Network Configuration and Planning

- 2-1 Network Topology
- 2-2 Roaming

Chapter 3 Adapter Installation and Configuration – Windows ® 98 / NT / 2000

- 3-1 System Requirements
- 3-2 Inserting the Adapter
 - 3-3.1 T60H424 Driver Installation - Windows ® 98
 - 3-3.2 Adapter Configuration - Windows ® 98
 - 3-3.3 Protocol Installation - Windows ® 98
- 3-4 T60H424 Setup for Windows ® 2000

Chapter 4 Installing and Navigating the PRISM Configuration Utility

- 4-1 LAN-Express Configuration Utility - Installation
- 4-2 LAN-Express Configuration Utility - Navigation

Appendix A Troubleshooting

Appendix B Glossary

Chapter 1 About the T60H424 MiniPCI Card

The IEEE 802.11 T60H424 MiniPCI Card is compatible with any standard, notebook computer Type II or Type III PCMCIA slot / Type III MiniPCI slot. As a Plug-and-Play device, Windows 95/98/2000 will automatically recognize the T60L198 PCMCIA and initiate the installation process. Upon successful installation, the T60H424 MiniPCI card will communicate seamlessly with other T60H424 wireless home and office networking products.

1-1 FEATURES

1. Supports up to 11 Mbps data rate: T-1 line alternative/replacement that dramatically cuts costs.
2. Working range up to 800 ft. in an open environment enhances mobility.
3. Supports point-to-point and point-to-multipoint access provides increased flexibility.
4. Seamless connectivity to wired Ethernet and PC network LAN's offers quick, trouble-free integration with existing networks.
5. Robust Direct Sequence Spread Spectrum (DSSS) technology provides secure, interference-resistant wireless connection.
6. Wireless connections eliminate the hassle and cost of cabling.
7. Supports a wide range of LAN (Local Area Network) Network Operating Systems (NOS) including Windows ® 98 and Windows ® 2000
8. Easy Plug and Play installation(T60L198).
9. Omni - directional antenna included
10. Greater flexibility to locate or move networked PC's

1-2 APPLICATIONS

T60H424 products offer a fast, reliable, cost-effective solution for wireless client access to the network the following applications and environments:

- Remote access to corporate network information
- E-mail, file transfer and terminal emulation
- Difficult-to-wire environments
- Historic or older buildings
- Buildings with asbestos insulation
- Open areas where wiring is difficult to employ
- Frequently changing environments

- Retailers, manufacturers or other organizations that frequently rearrange the workplace or relocate
- Temporary LANs for special projects or peak time usage
- Trade shows, exhibitions and construction sites that employ temporary networks.

Retailers, airline and shipping companies that need additional workstations for a peak period and Auditors that require workgroups at customer sites.

- Access to database for mobile workers
- Medical, Technical and Retail specialists that require roaming access to a database or other network resources.
- SOHO (Small Office and Home Office) users
- Perfect for users that need a small, easy-to-install network that deploys rapidly.
- Inter-building connection
- Wireless building-to-building networks are quickly and easily installed, require no monthly lease fees, and provide the flexibility to reconfigure easily.

1-3 PRODUCT KIT

The T60H424 product kit includes the following items. Ensure that the items in the following list have been included. If any of the listed items are missing, please contact your local dealer.

- 1 X T60L198 PCMCIA Type II Adapter or Type III T60H424 MiniPCI Adapter
- 1 X Driver
- 1 X User Manual & Utility

Chapter 2 Network Configuring and Planning

The T60H424 supports legacy Ethernet LAN network configuration options as defined by the IEEE 802.11 standards committee.

The T60H424 can be configured as:

- . Ad-Hoc for departmental or SOHO LANs.
- . Infrastructure for enterprise LANs.
- . LAN-Interconnection for to point-to-point link as a campus backbone.

2-1 Network Topology

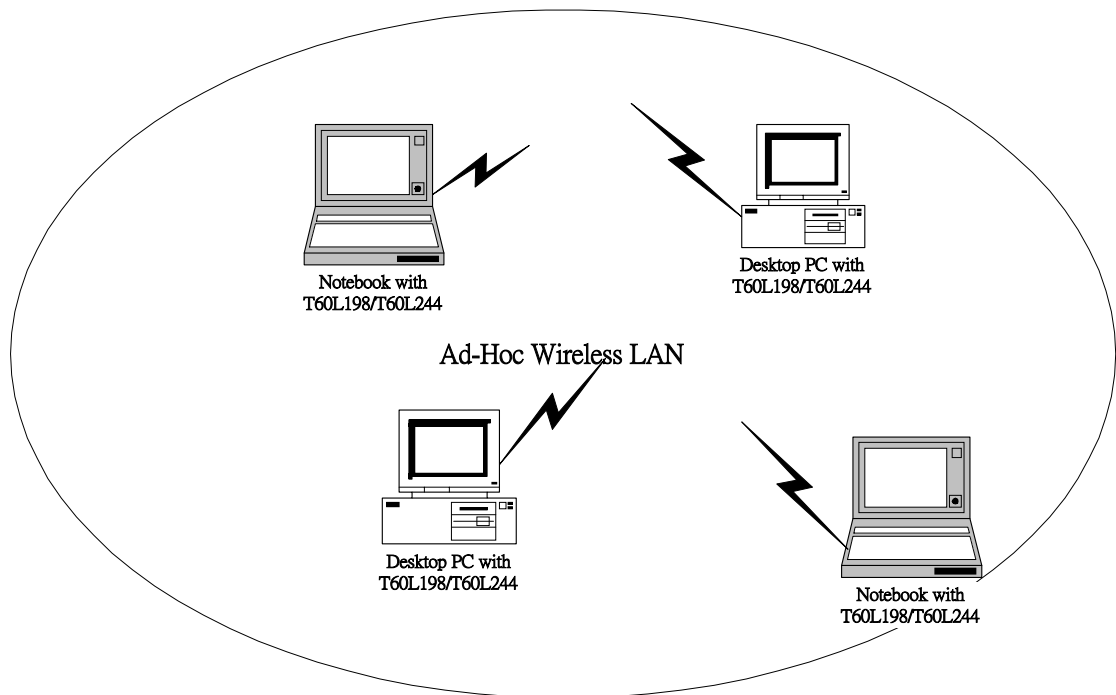


Fig.1 Ad-Hoc Wireless LAN

An Ad-Hoc wireless LAN is a group of computers. Each equipped with on T60H424 adapter, connected as an independent wireless LAN. Computers in a specific Ad-Hoc wireless LAN must be configured to share the same radio channel.

Ad-Hoc wireless LAN configurations are appropriate for branch level departments or SOHO operations.

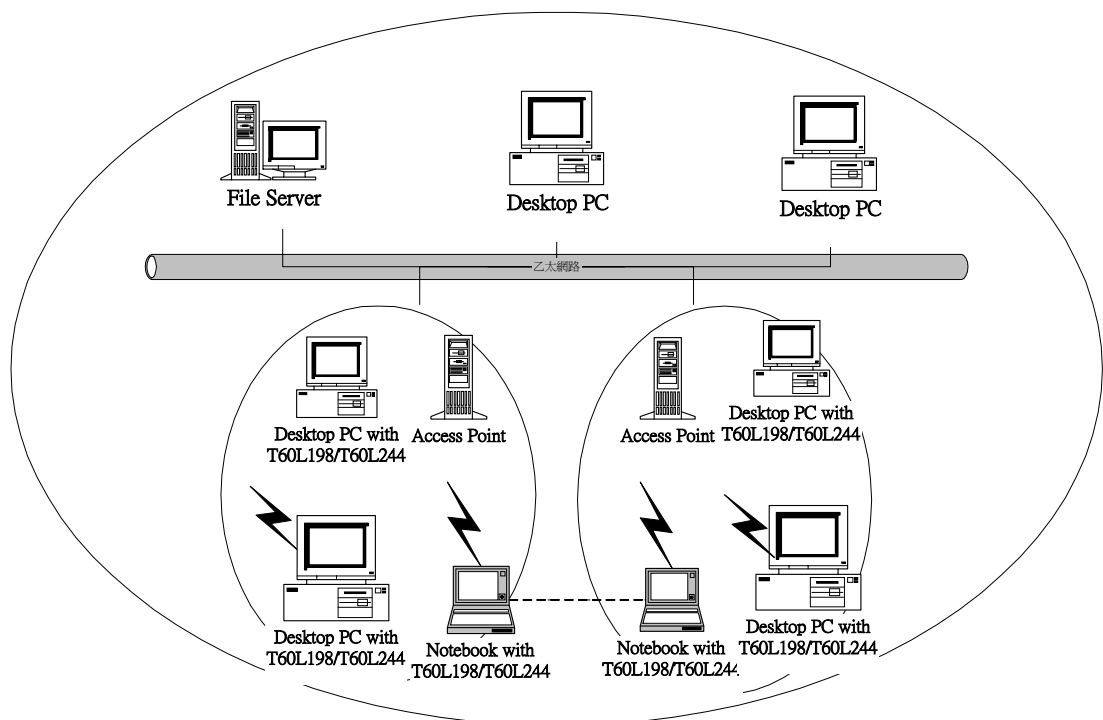


Fig.2 Infrastructure Wireless LAN Configuration

The T60H424 provides access to a wired LAN for wireless workstations. An integrated wireless and wired LAN is called an Infrastructure configuration. A group of T60H424 PC users and an Access Point compose a Basic Service Set (BSS). Each T60H424 can talk to any computer in the wired LAN infrastructure via the Access Point.

An Infrastructure configuration extends the accessibility of a T60H424 equipped PC to a wired LAN and doubles the effective wireless transmission range for 2 T60H424 PCs. Since the Access Point is able to forward data within its BSS, the effective transmission range in an infrastructure LAN is doubled.

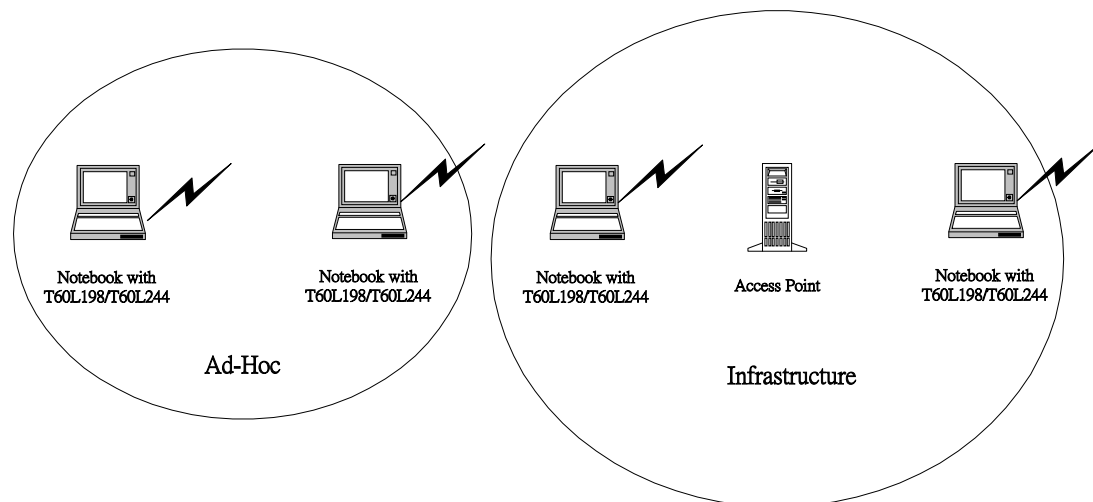


Fig 3 The effective transmission ranges

2-2 Roaming

Infrastructure mode also supports roaming capabilities for mobile users. More than one BSS can be configured as an Extended Service Set (ESS). The continuous network allows users to roam freely within an ESS. All T60H424 PCs and Access Point within one ESS must be configured with the same ESSID and use the same radio channel.

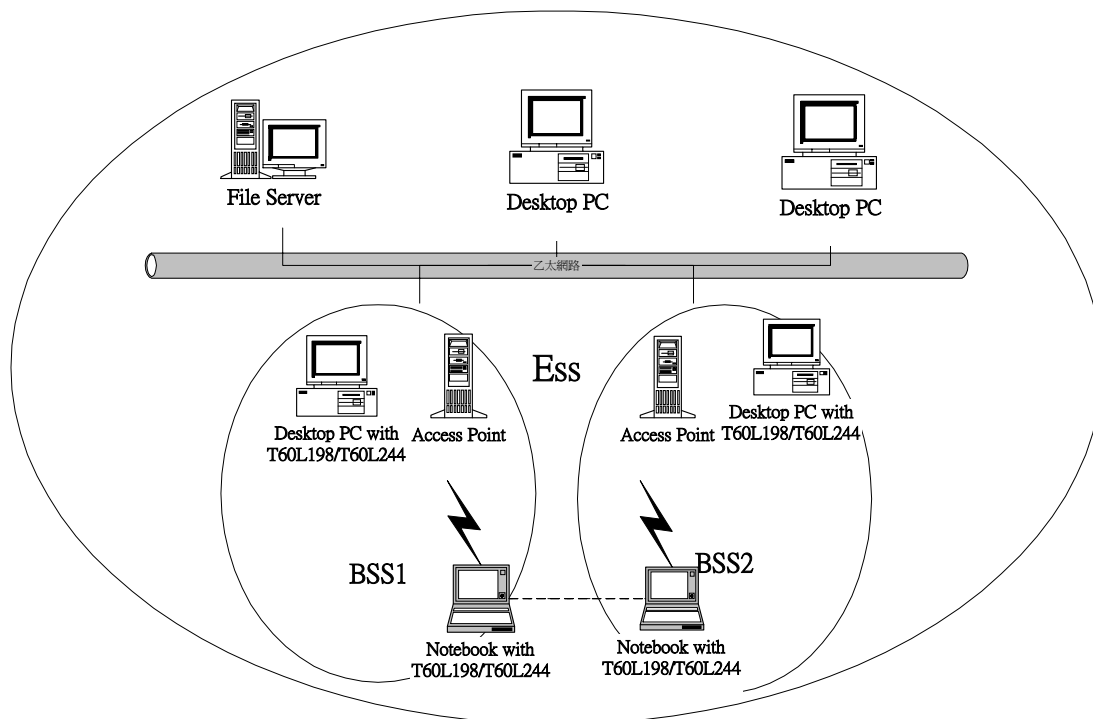


Fig.4 Roaming in an Extended Service Set (ESS)

Before enabling an ESS with roaming capability, choosing a feasible radio channel and optimum Access Point position is recommended. Proper Access Point positioning combined with a clear radio signal will greatly enhance performance.

Chapter 3 Adapter Installation and Configuration – Windows[®] 98 / 2000

3-1 SYSTEM REQUIREMENTS

In order to install and use the T60L198 PCMCIA/T60H424 MiniPCI card your PC system must meet the following requirements:

- A PCMCIA Type II or Type III slot / Type III MiniPCI slot
- PCMCIA/MiniPCI revision 2.10 compliant card and socket services
- Windows 98 (with the Floppy, for use during installation)
- 500 Kbytes free disk space for utility and driver installation

3-2 INSERTING THE ADAPTER

To insert the T60L198/ T60H424 Network Adapter into a notebook computer, do the following:

1. Locate an available Type II or Type III PCMCIA slot / Type III MiniPCI slot.
2. With the PCMCIA adapter's 68-pin / MiniPCI Adapter's 124-pin connector facing the PCMCIA/MiniPCI slot and the "T60H424 MiniPCI" label facing up slide the PCMCIA adapter

completely into the PCMCIA slot , the MiniPCI Adapter completely into the MiniPCI slot.

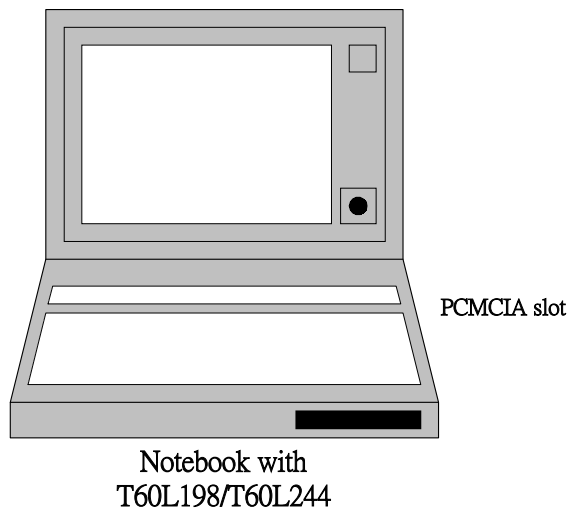


Fig. 5.1 Insert the PCMCIA Adapter into Notebook

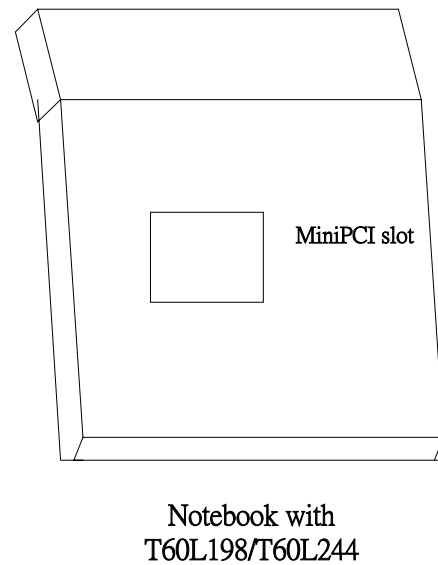


Fig. 5.2 Insert the MiniPCI Adapter into Notebook

After properly inserting the Network Adapter into your notebook, continue with the T60H424 driver and Lan-Express Configuration Utility installation.

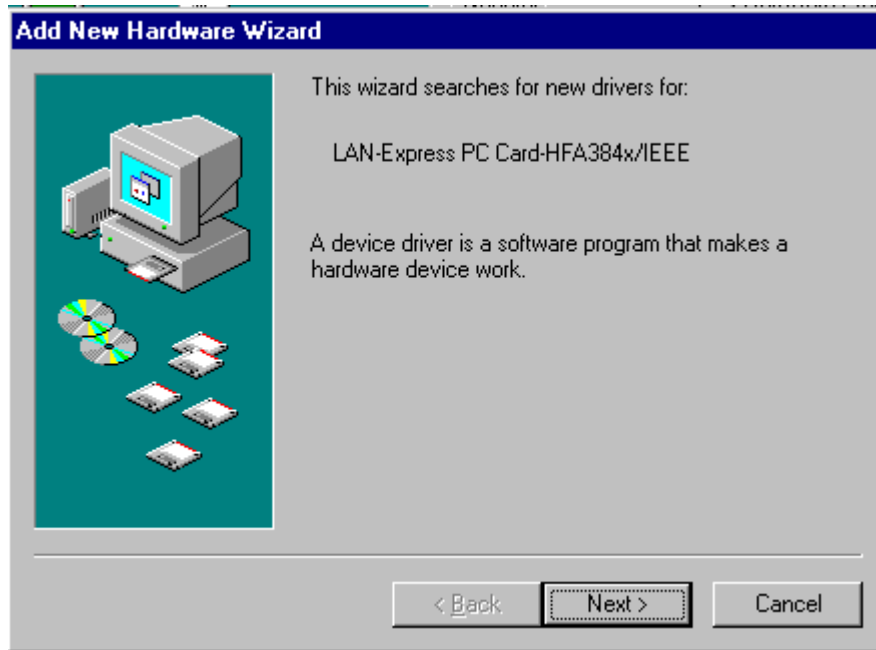
NOTE: The PCMCIA slot allows “hot swap” of PCMCIA adapter. You may insert or remove the T60L198 / PCMCIA adapter from the slot anytime, even when the power of your computer is on.

NOTE: Windows 98 requires that the Network card and socket services must be compliant with the PCMCIA revision 2.10 specification. Please check the documentation of the PCMCIA/MiniPCI driver before installing the T60L198 PCMCIA/T60H424 MiniPCI adapter.

3-3.1 T60H424 DRIVER INSTALLATION -WINDOWS 98

Note: Before proceeding, have the Windows 98 Floppy ready, as it will be required during the software installation process.

1. Insert the T60H424 MiniPCI adapter into a standard Type II or Type III PCMCIA /Type III MiniPCI card slot, as described in the preceding section.
2. Windows 98 will automatically detect the T60H424 and prompt you to install the necessary driver. Click “Next” to begin the installation.



(PCMCIA Adapter is left-hand or right-hand side ; MiniPCI Adapter is button side)

3. Check "Search for the best driver..." click "Next".



4. Check "floppy disk drivers" , click "Next". Windows 98 will automatically find the file.



5. Windows 98 will then acknowledge that it has found the appropriate driver, click "Next".



6. Click "Finish" to complete the installation.



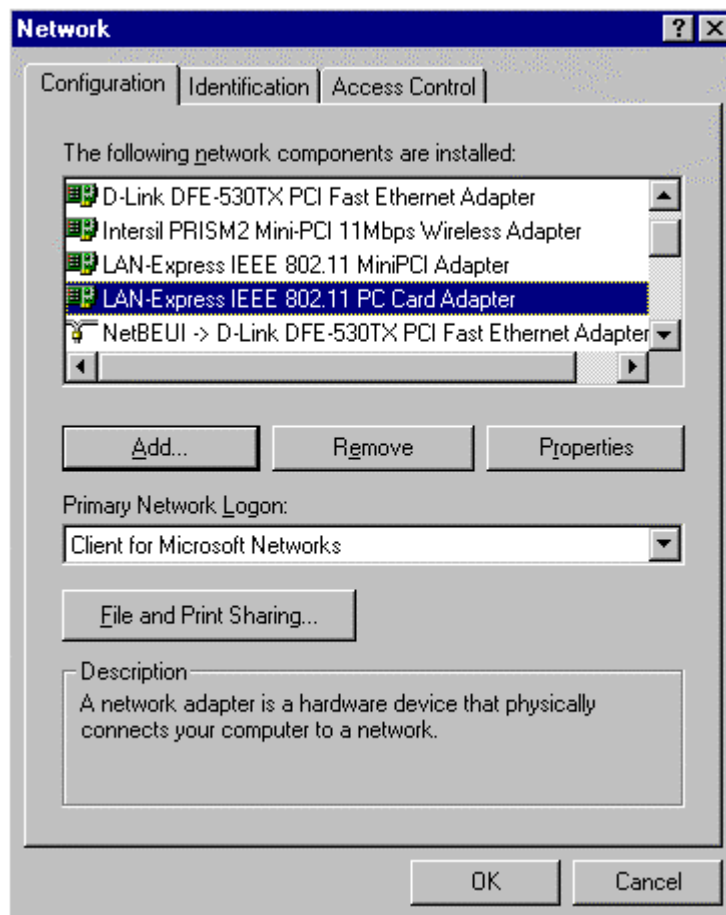
3-3.2 ADAPTER CONFIGURATION – WINDOWS 98

After successful installation of the T60H424 and its driver, continue the installation process by configuring the T60H424 adapter properties. To configure the T60H424 Adapter complete the following steps :

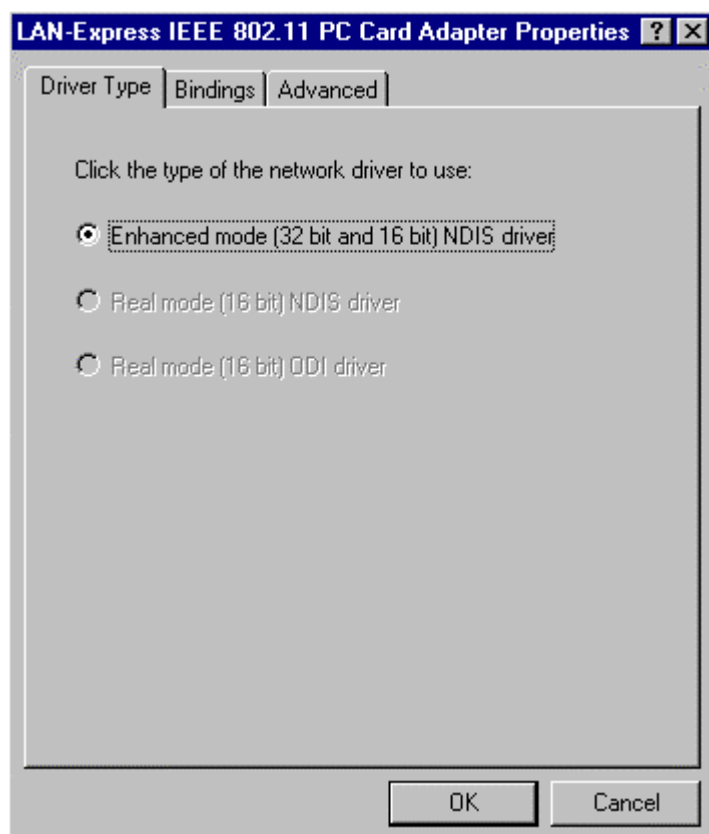
1. From the Control Panel, double-click the "Network" icon.



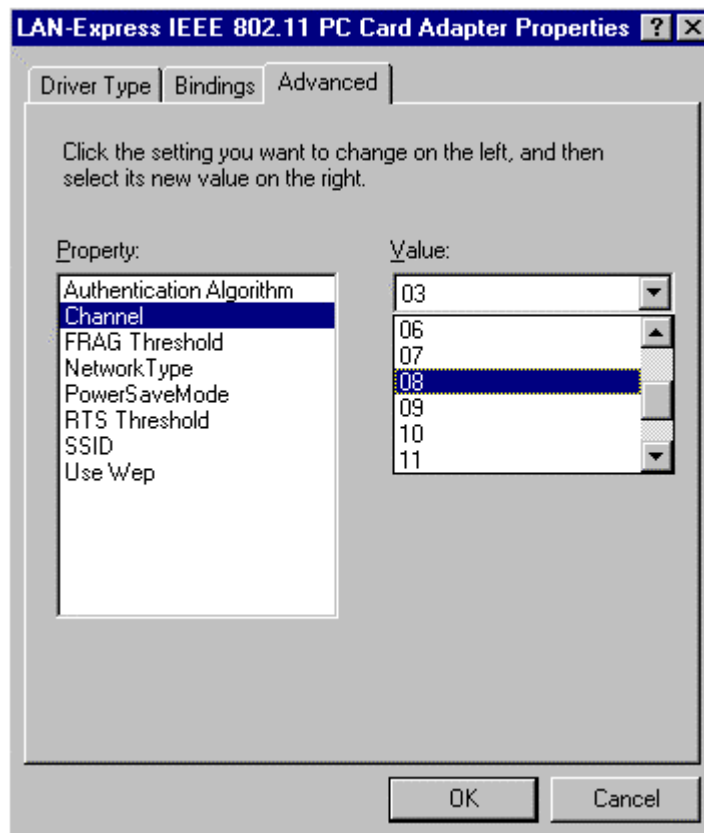
2. Select "LAN-Express IEEE 802.11 PC Card Adapter" or "LAN-Express IEEE 802.11 MiniPCI Adapter" from the list and press the "Properties" button.



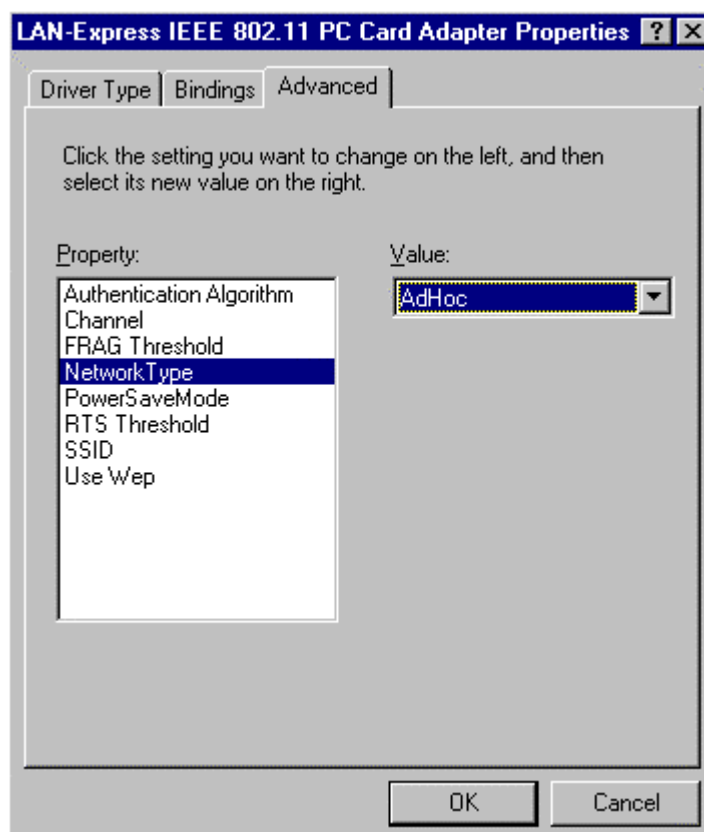
3. From the "Properties" menu select the "Advanced" tab.



4. Select "Channel" from the list, and choose a "Value" from the drop down list. FCC regulations require a "Value" between 1 and 11.

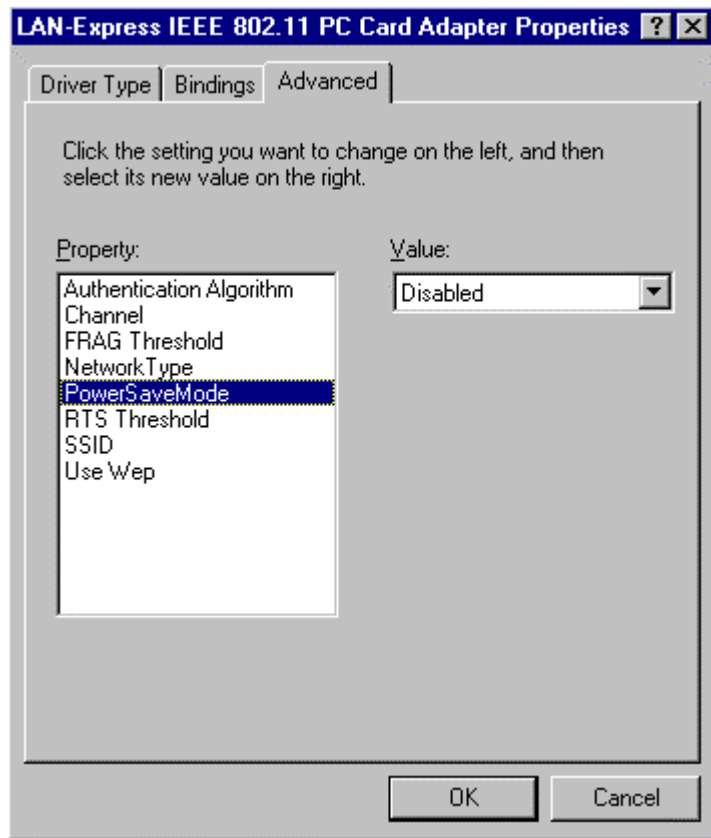


5. Select "Network Type", and choose "Infrastructure" or "Ad-Hoc" as the "Value".



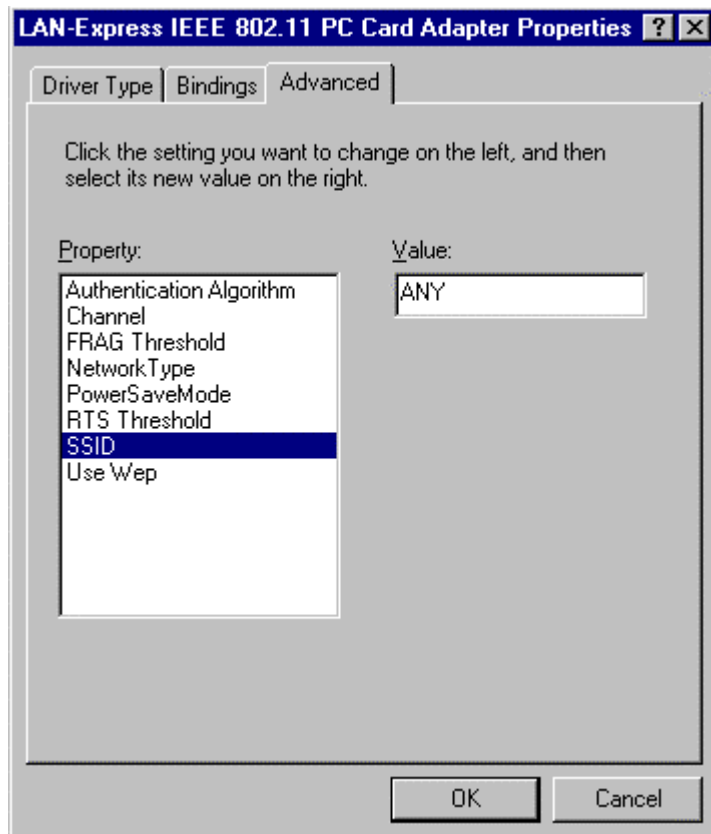
Note: “Infrastructure” mode allows a wireless adapter to communicate with a wired network, While “Ad-Hoc” mode allows wireless-to-wireless communication. Consult your System Administrator for information about your network communication type. For more information About Infrastructure and Ad-Hoc networks, see Chapter 2 of this manual

6. Select “Power Save Mode” and choose a “Value”.



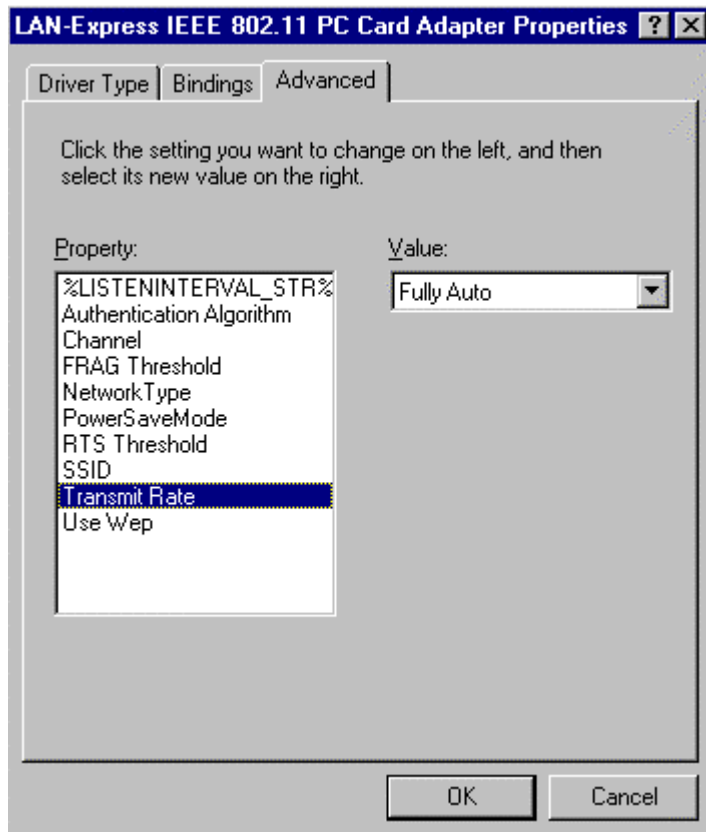
NOTE: To allow uninterrupted data communication, choose “Disabled” as the “Value”. Choosing “Enabled” allows your notebook to enter “sleep” mode, however, this will interrupt data communication. Consult your System Administrator to find out the best setting for your network type. For more information about Power Save Mode, see the chapter entitled “LAN-Express Configuration Utility” in this manual.

8. Select “SSID”; enter a “Value” of “ANY”.



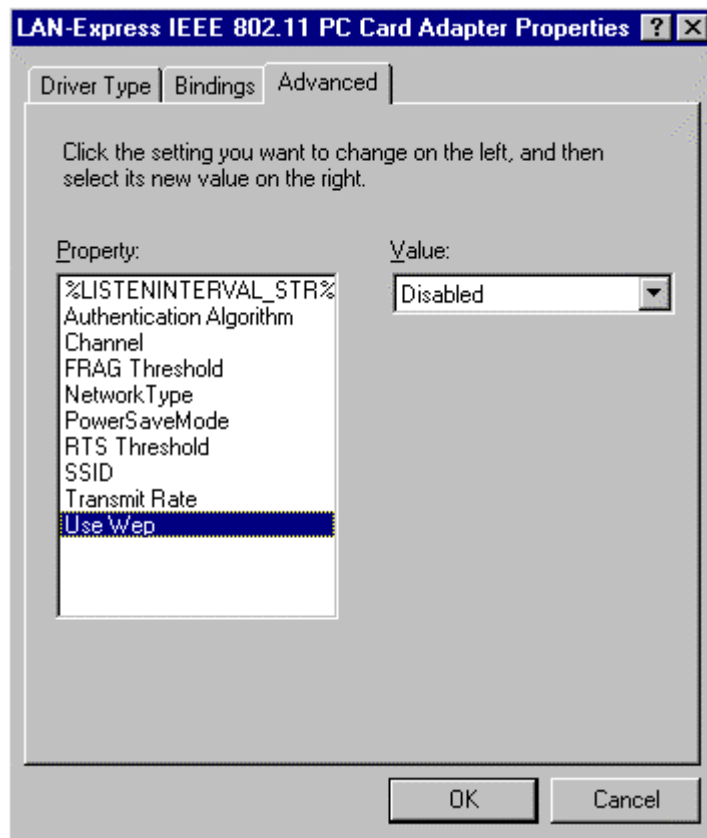
NOTE: The SSID can have any value, but should have the same value as the Access Point (AP). In Ad-Hoc mode, all clients should share the same SSID

9. Select "Transmit Rate", and choose a "Value".



NOTE: Fixed 11 Mb/s is the preferred "Value" for environments where the client has line of sight access and is a short distance away from the AP. Fully Auto is the recommended setting for clients that are farther away from the AP and where there may be interference between the client and the AP.

10. Select "Use Wep", and choose a "Value".



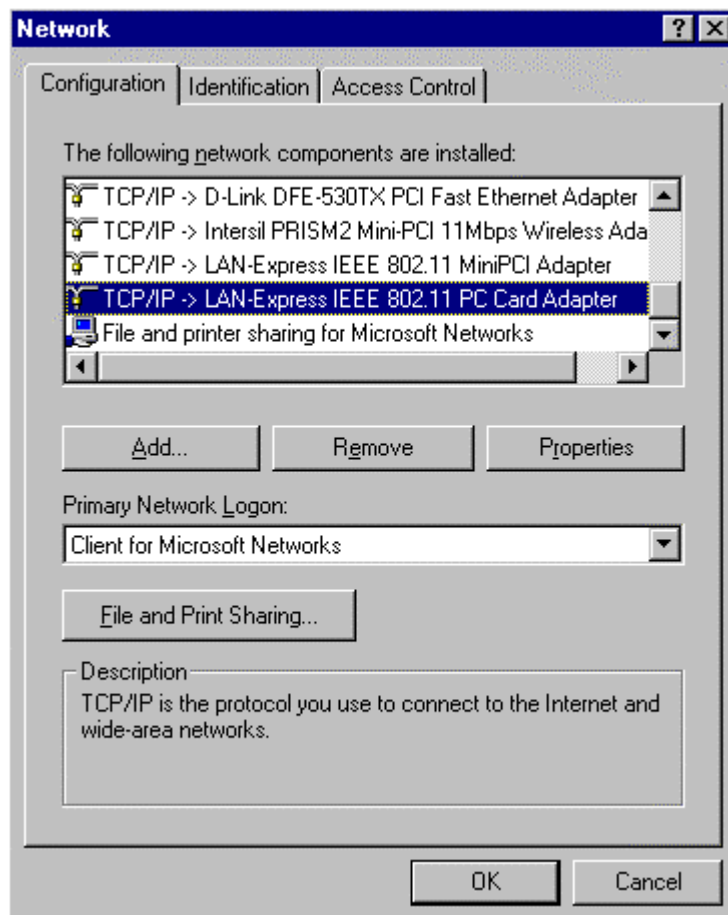
NOTE: Wired Equivalent Privacy (Wep) is an encryption scheme used to protect wireless data communication. Selecting "Disabled" will prevent you from sharing data with other computers if your network uses Wep. If your network is Wep enabled, you must choose "64bit" or "128bit". Consult your System Administrator for more information about your network type. For more information about Wep, see the chapter entitled "PRISM Configuration Utility" in this manual.

11. After the configuring the "Properties", click "OK" and continue with the Protocol Installation, described in the following section.

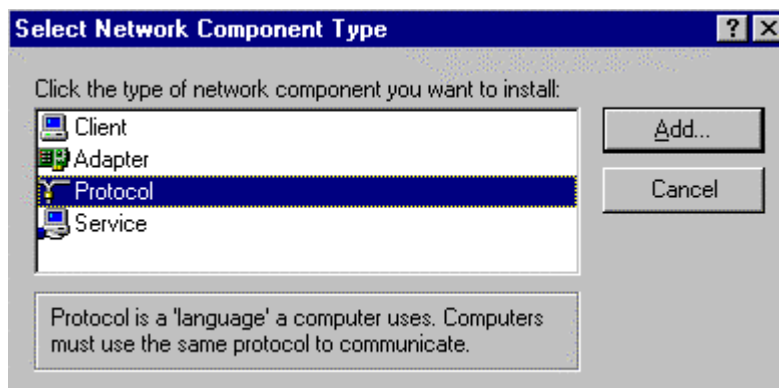
3-3.3 PROTOCOL INSTALLATION – WINDOWS 98

Before continuing with the Protocol installation consult your System Administrator for details about your specific network. To install network protocols complete the following steps.

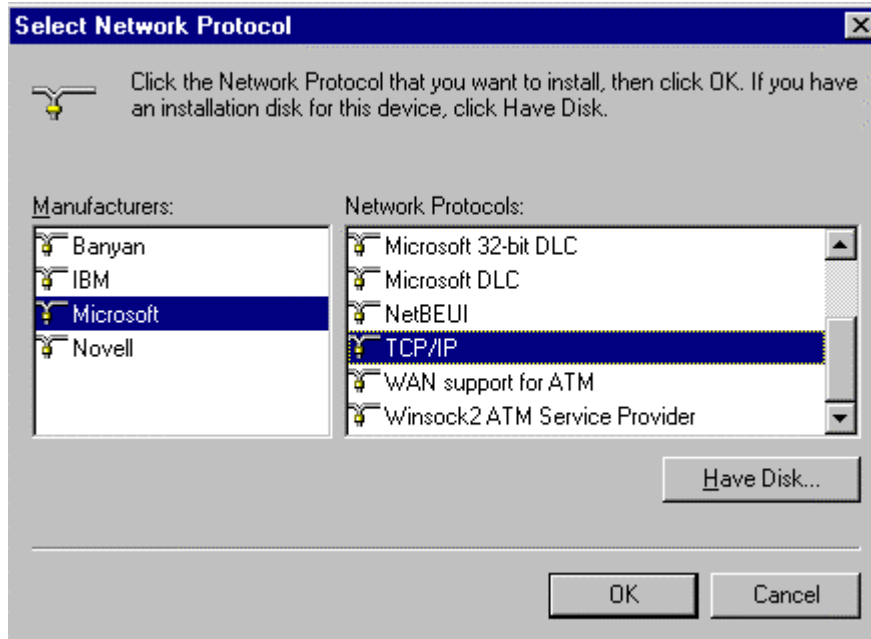
1. From the "Control Panel" double-click the "Network" icon.
2. Select "LAN-Express IEEE 802.11 PC Card Adapter" or "LAN-Express IEEE 802.11 MiniPCI Adapter" and click "Add".



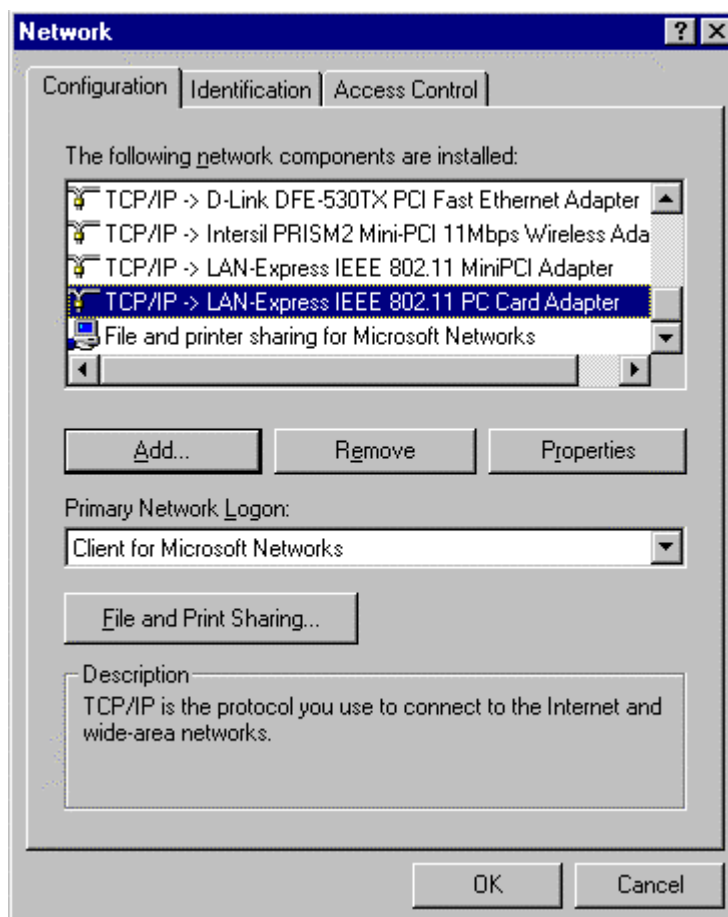
3. Highlight "Protocol" and click "Add".



4. Select "Microsoft" from the list of "Manufacturers" and "TCP-IP" from the list of "Network Protocols", click "OK"



5. Select "TCP/IP " and click "Properties".

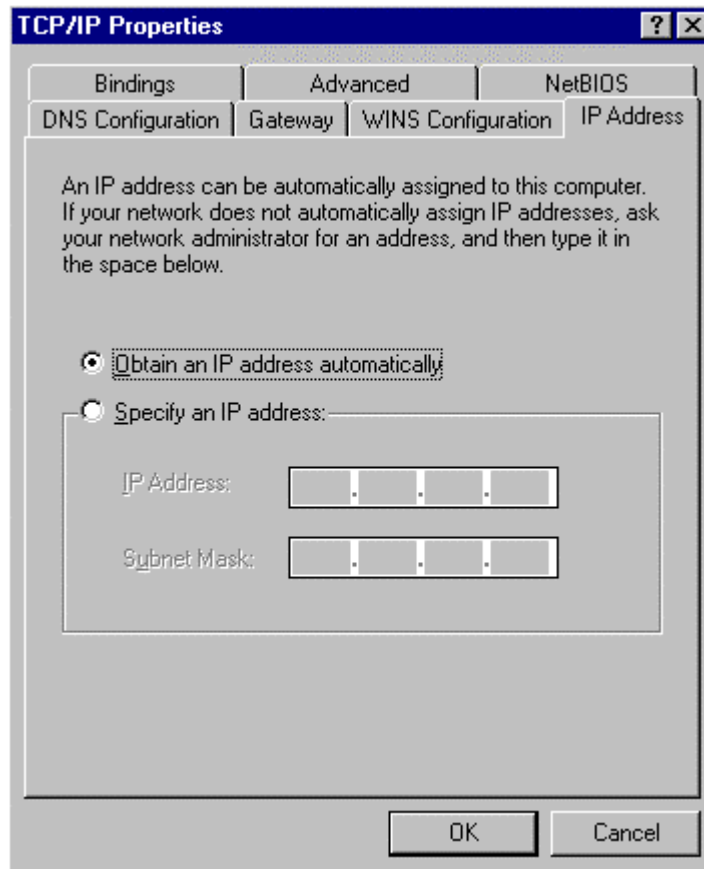


Repeat step 2 – 5 to install other protocols such as NetBeui or IPX/SPX.

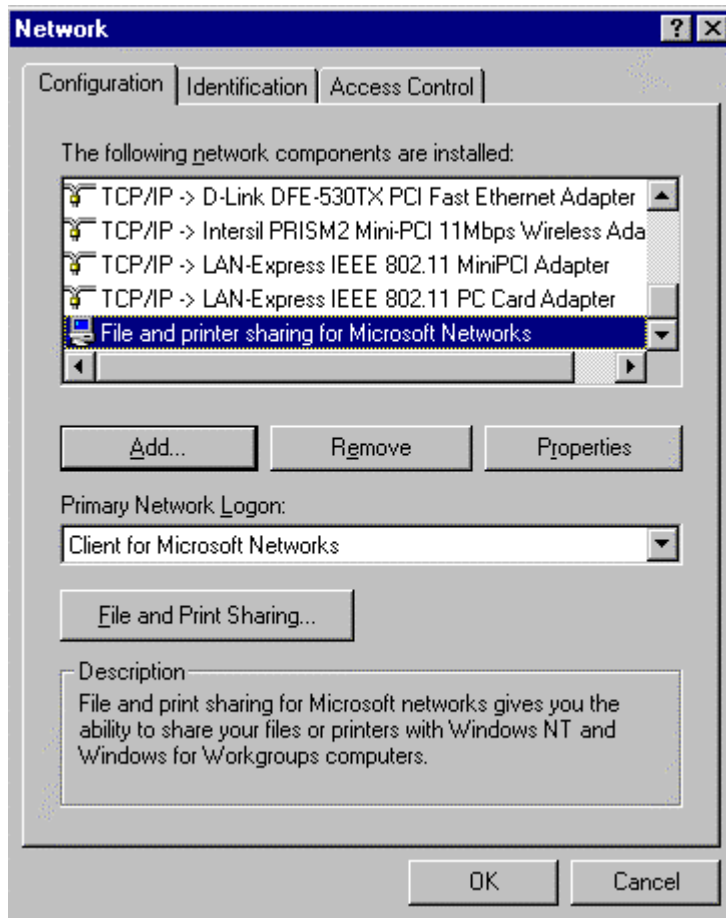
NOTE: The following steps apply to DHCP servers. Consult your system administrator for

specific information regarding your server type, and for help in specifying an IP address if you do not use a DHCP server and must manually enter the IP address and DNS number.

6. Check "Obtain an IP address..." and click "OK". If you are using a DHCP server the IP address will be entered automatically.

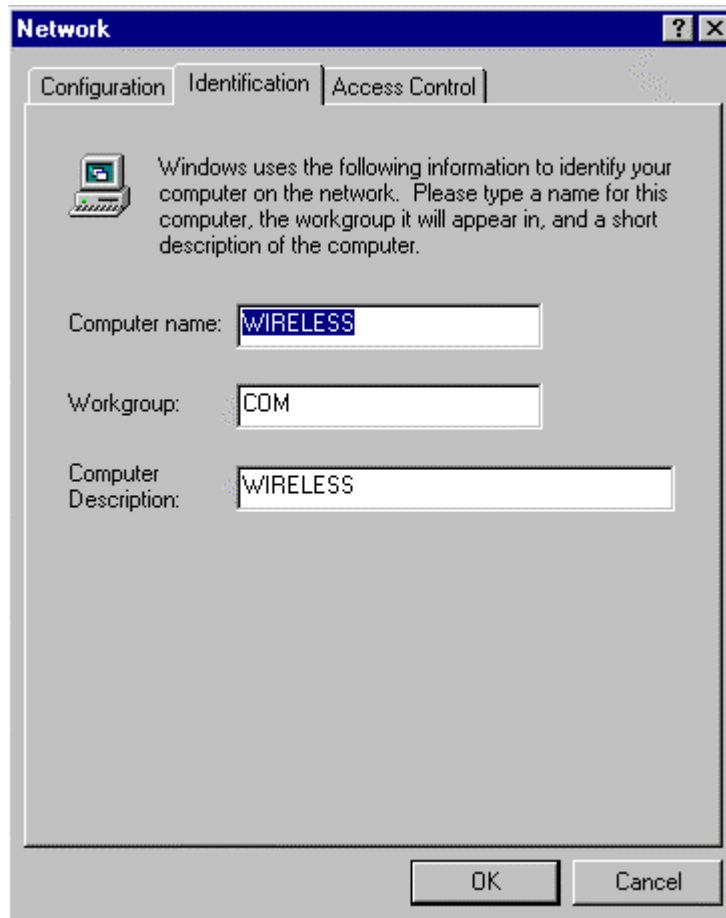


7. From the Network menu highlight "Client from Microsoft Networks", and click "File and Print Sharing".



8. Check both boxes and click "OK".

9. Enter a "Computer name", "Workgroup" and "Computer Description", click "OK"



11. You will be prompted to restart your computer, click “Yes” to complete the installation.

Note: Please see the trouble shooting if you encounter some problem while installing the PC-Card or your PC-Card is non-functional.

3-5 T60H424 SETUP FOR WINDOWS ® 2000

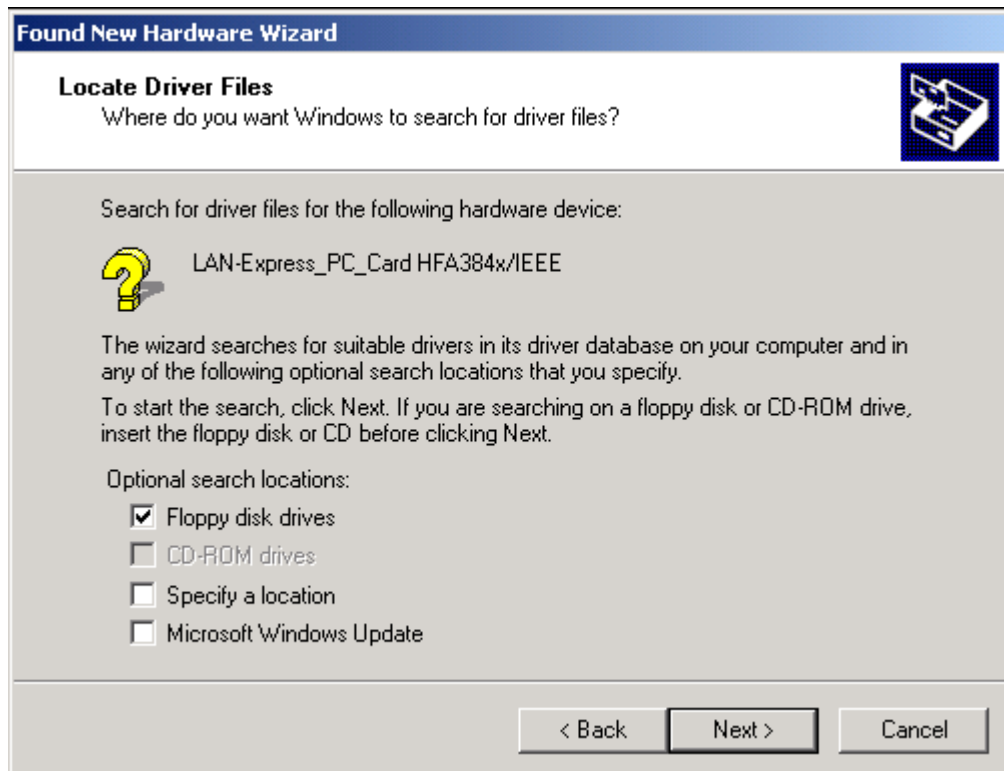
1. Insert the T60H424 MiniPCI adapter into a standard Type II or Type III PCMCIA card slot / Type MiniPCI card slot, as described in the preceding section.
2. Windows ® 2000 will automatically detect the T60H424 and prompt you to install the necessary driver. Click “Next” to begin the installation.



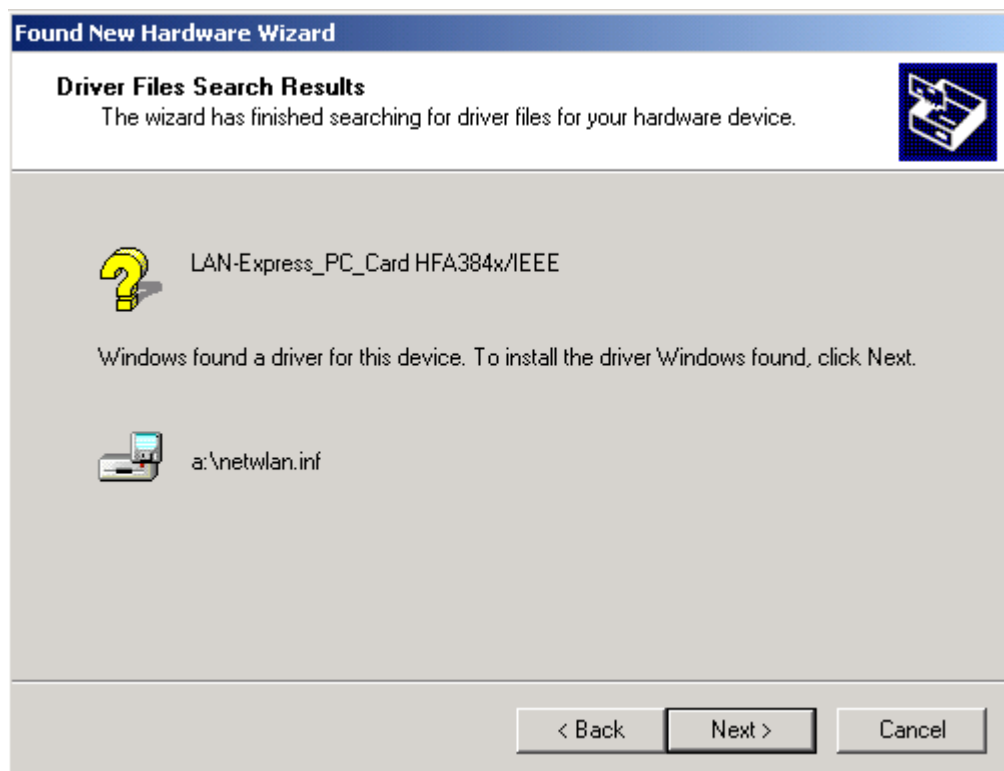
3. Check "search for the best driver..." click "Next".



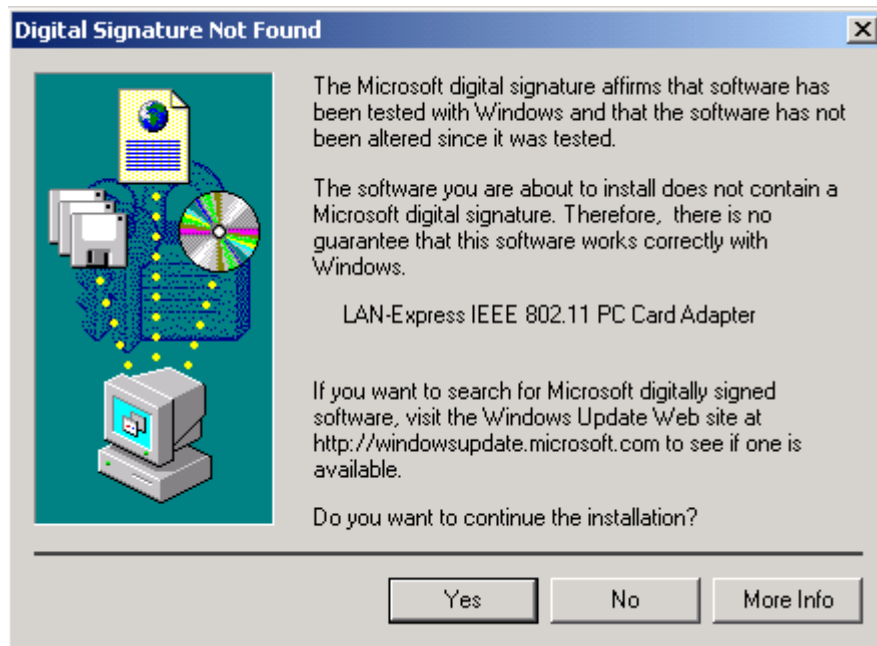
4. Check "floppy disk drivers", click "Next". Windows © 2000 will automatically find the file.



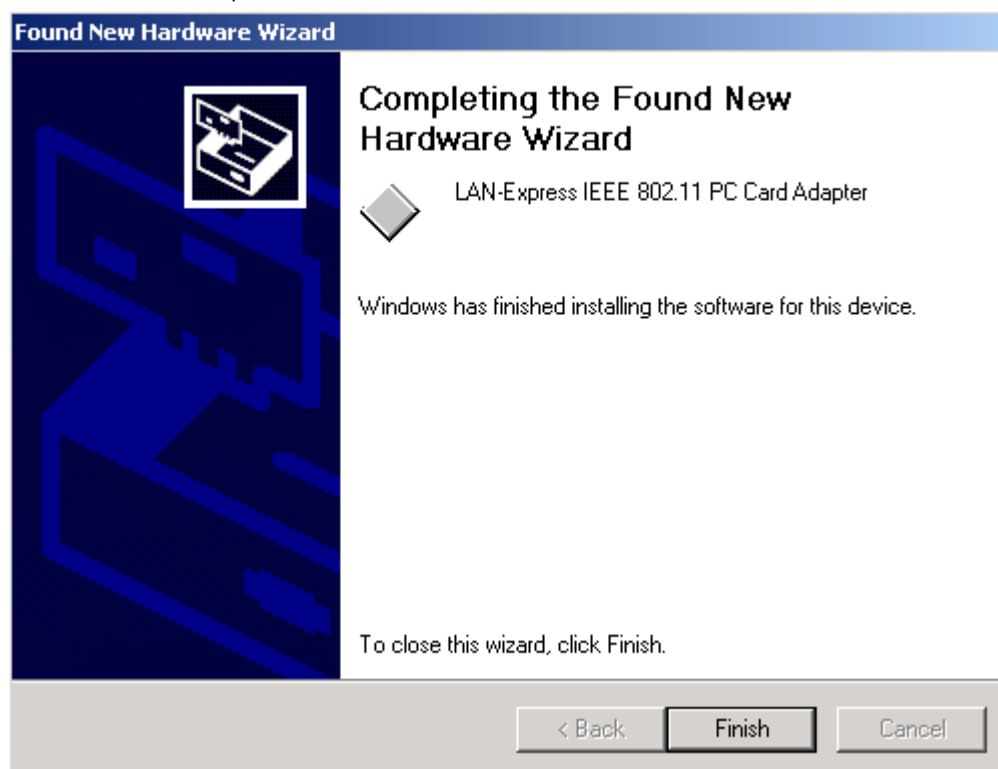
5. Windows ©2000 will then acknowledge that it has found the appropriate driver, click "Next".



6. Click "Yes" to continue the installation.



7. Click "Finish" to complete the installation.



Chapter 4 Installing & Navigating the LAN-Express Configuration Utility

4-1 LAN-Express CONFIGURATION UTILITY - INSTALLATION

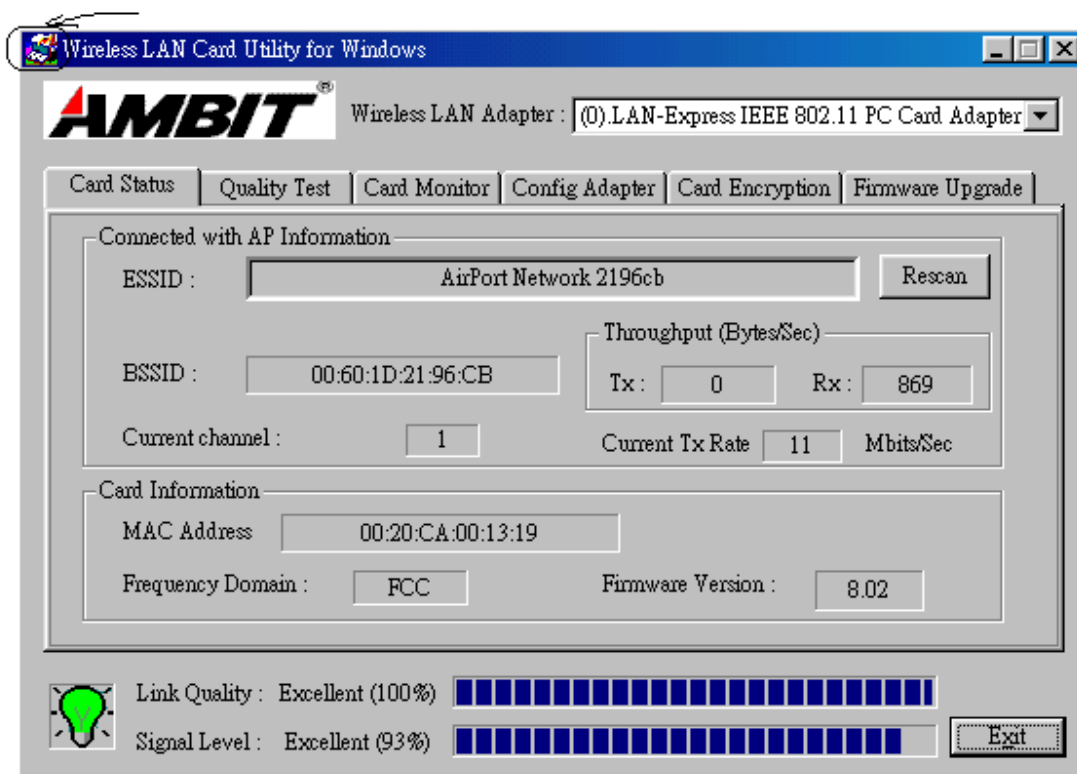
Insert the LAN-Express Network Configuration Utility disk into an available floppy disk drive. From the "Run" window type "A:\utility\setup.exe" (where "A" represents a floppy disk drive).

4-2 LAN-Express CONFIGURATION UTILITY - NAVIGATION

The following section describes and defines the various functions of the LAN-Express Network Configuration Utility. This utility provides quick access to all adapter settings.

After installation is complete, a LAN-Express utility icon will appear in the "Start" ->"Program"->"Wireless LAN Card Utility"->"Wireless LAN Utility" Icon.

The LAN-Express About Icon: Clicking the upper left corner icon in the LAN-Express Utility will open the About, here you will find Version, Copyright and Manufacturer information.



The LAN-Express Card Status: Clicking the Card Status button in the LAN-Express Utility will open the Card Status. The Link Info menu provides information about the current link between the adapter and the base station(or AP).

Wireless LAN Card Utility for Windows

AMBIT Wireless LAN Adapter : (0) LAN-Express IEEE 802.11 PC Card Adapter

Card Status | **Quality Test** | Card Monitor | Config Adapter | Card Encryption | Firmware Upgrade

Connected with AP Information

ESSID : AirPort Network 2196cb Rescan

BSSID : 00:60:1D:21:96:CB

Throughput (Bytes/Sec)
Tx : 0 Rx : 869

Current channel : 1 Current Tx Rate 11 Mbits/Sec

Card Information

MAC Address 00:20:CA:00:13:19

Frequency Domain : FCC Firmware Version : 8.02

Link Quality : Excellent (100%) Exit

Signal Level : Excellent (93%)

The LAN-Express Quality Test: Clicking the Quality Test button in the LAN-Express Utility will open the Quality Test, providing a simple test on two station. While one station Set a Master mode, another station set a slave mode. Master station must set slave station's Mac Address. If a station is tested under loopback test mode, it should use AP of LAN-Express.

Wireless LAN Card Utility for Windows

AMBIT Wireless LAN Adapter : (0) LAN-Express IEEE 802.11 PC Card Adapter

Card Status | **Quality Test** | Card Monitor | Config Adapter | Card Encryption | Firmware Upgrade

Choose the station

☒ Master test Slave Address: 00:20:CA:00:13:20 Start

☐ Slave test My Address: 00:20:CA:00:13:19 Stop

☐ Loopback through AP

Test Result

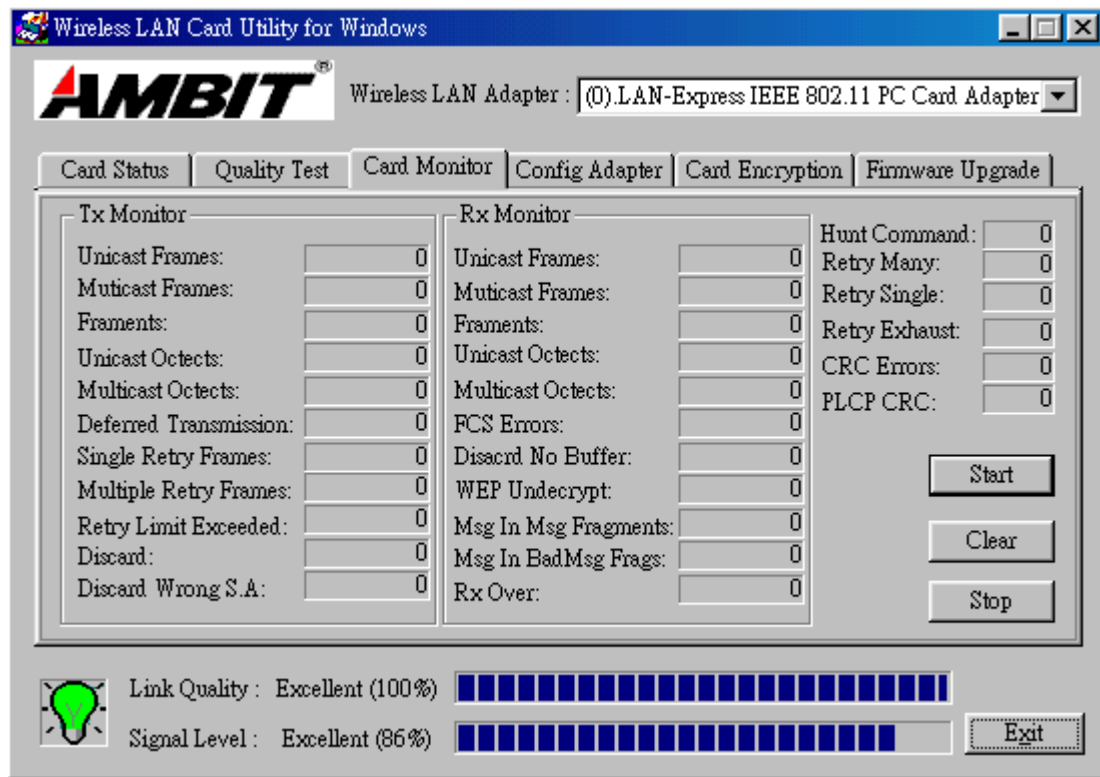
My Address : 00:20:CA:00:13:19 Test Address :

Sent Packets: Received Packets: Time Elapsed :

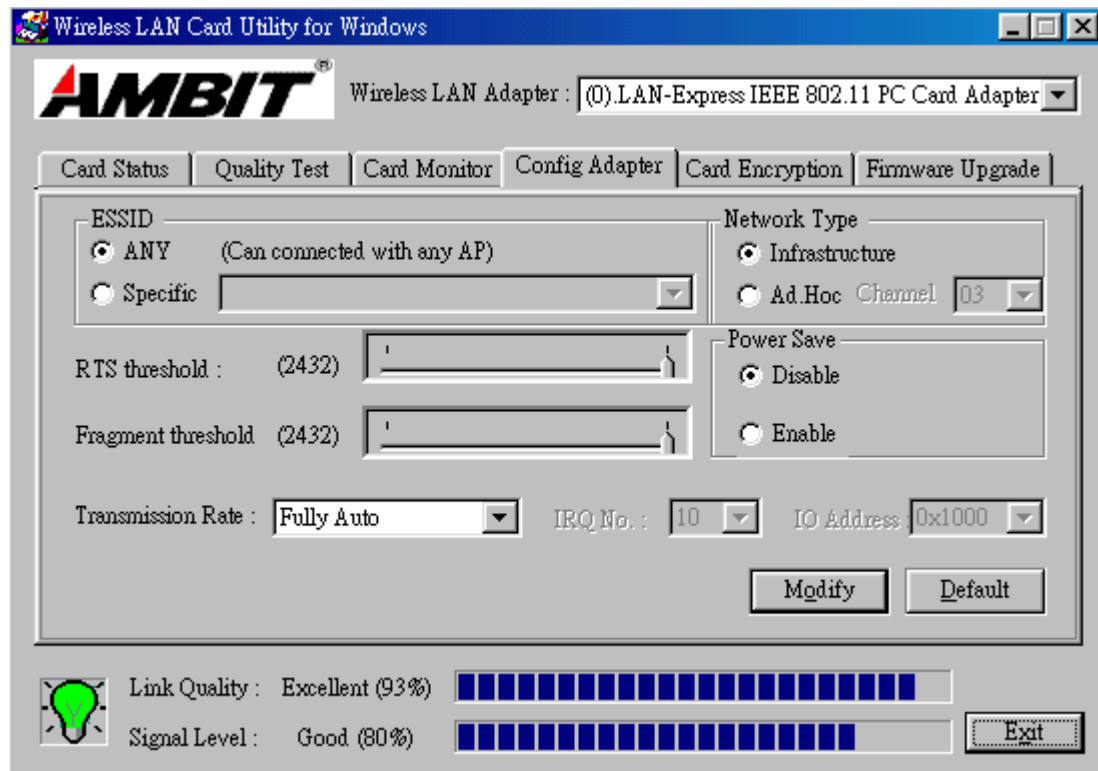
Link Quality : Good (60%) Exit

Signal Level : Good (60%)

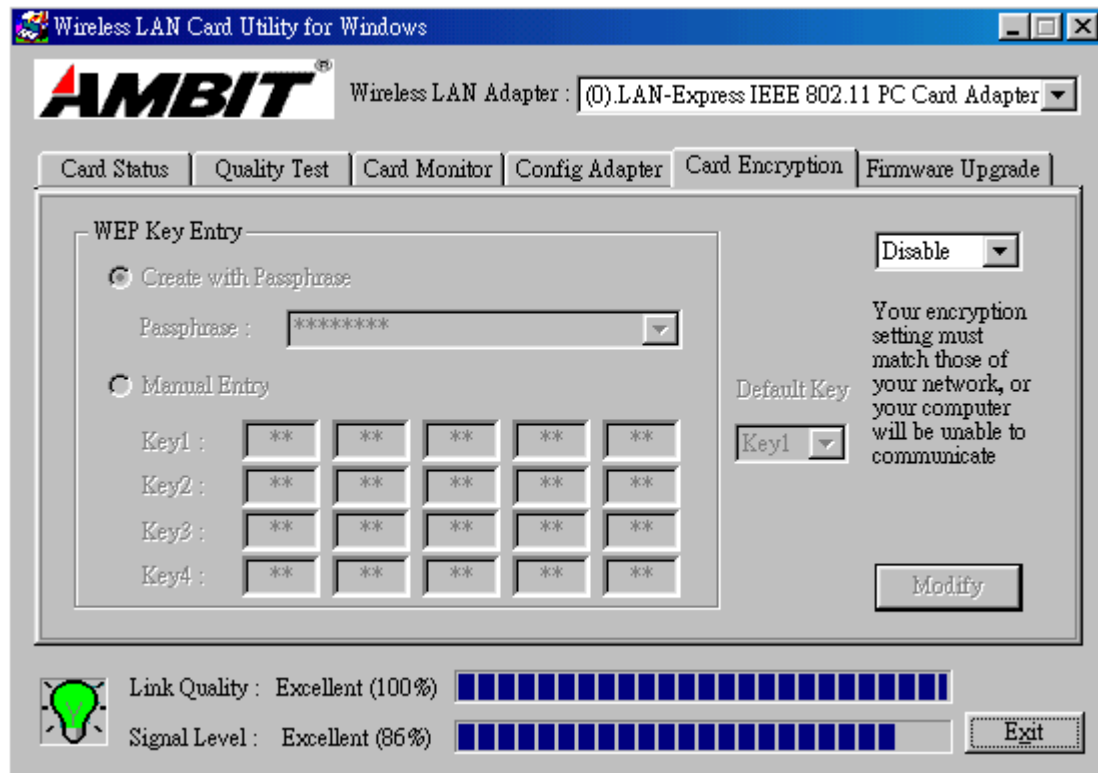
The LAN-Express Card Monitor: Clicking the Card Monitor button in the LAN-Express Utility will open the Card Monitor, It can monitor a physical layer in the Adapter currently.



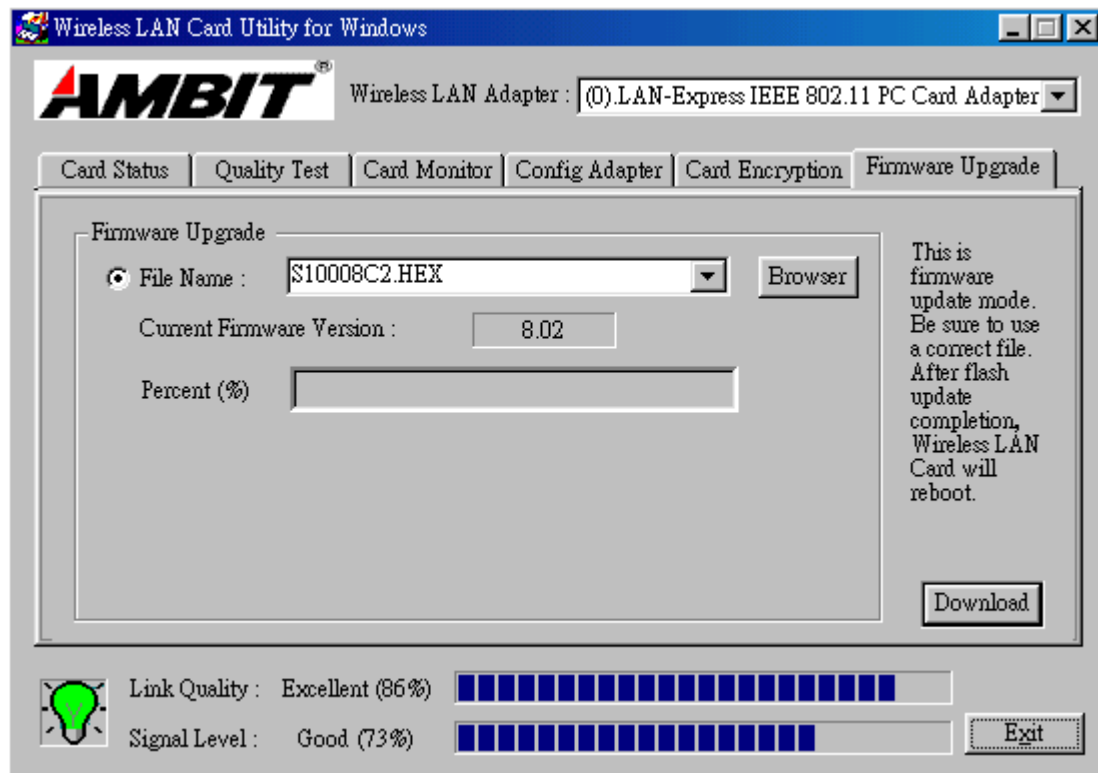
The LAN-Express Configuration: Clicking Config Adapter in the LAN-Express Utility will open the Config Adapter, providing quick access to all adapter settings. The following image shows the LAN-Express Configuration Utility. It can change every parameters.



The LAN-Express Card Encryption: Clicking the Card Encryption button in the LAN-Express Utility will open the Card Encryption, An acronym for Wired Equivalent Privacy, WEP is an encryption scheme used to protect your wireless data communications. WEP uses a combination of 64-bit keys,128-bit keys to provide access control to your network and encryption security for every data transmission. To decode a data transmission, each wireless client on the network must use an identical 64-bit key,128-bit key.



The LAN-Express Firmware Upgrade: Clicking the Firmware Upgrade button in the LAN-Express Utility will open the Firmware Upgrade, It can upgrade a firmware of differ version.



Configuration: Selecting this tab opens the "Configuration" menu. Here you will find options for configuring your adapter.

Description of Settings

Following is an explanation of each adapter setting presented by the "Configuration" menu.

Mode: The Mode setting determines the architecture of your wireless LAN. Choose Ad-Hoc or Infrastructure Mode depending on your network type. A brief explanation of each mode follows:

- **Ad-Hoc:** This mode is used for a simple peer-to-peer network. This type of network allows the sharing of local resources only between wireless clients without a wireless Access Point (AP).
- **Infrastructure:** This mode allows a wireless LAN to be integrated into an existing wired network through an AP. Infrastructure type networks also permit roaming between Access Points while maintaining connection to all network resources. Infrastructure mode provides additional features, such as WEP security, power saving and extended range.

SSID: An acronym for Service Set Identifier, SSID is the unique name shared among all clients and Access Points in a wireless network. The SSID must be identical for all clients or Access Points participating in the same network. The SSID is case sensitive and must not exceed 30 characters.

Ethernet Conversion: The RFC1042 mode is the 802.11 standard conversion method and is selected by default. If compatibility with older wireless LAN systems is necessary select another conversion implementation from the **Ethernet Conversion drop** down list.

Tx Rate: The transmit rate or Tx Rate selects the allowable transfer rates of the wireless client. To optimize performance and range, the Tx Rate should be set to Fully Automatic, which will automatically adjust the transfer speed for best performance and longest range.

Note: *The Tx rate setting must be supported by the AP. If the AP does not support the Tx rate, undesired results may occur.*

WEP: An acronym for Wired Equivalent Privacy, WEP is an encryption scheme used to protect your wireless data communications. WEP uses a combination of 64-bit keys, 128-bit keys to provide access control to your network and encryption security for every data transmission. To decode a data transmission, each wireless client on the network must use an identical 64-bit key, 128-bit key.

NOTE: This feature is only available in Infrastructure Mode and must also be enabled on the Access Point. Select the WEP tab to enable or disable this feature.

PS Mode: Power Saving Mode enables or disables the power saving features of your wireless adapter. When enabled on a laptop, the power saving mode can reduce power consumption by the wireless card and extend the battery life of your laptop. This setting is only implemented in a network operating in Infrastructure mode.

- **Changing the PS mode:** The PS Mode on your adapter is set to "Disabled" by default. To change the setting, select "Enabled" from the drop-down list, click "OK" and wait a few seconds. The screen will then be updated and show the current Connection Status, Link Quality and Signal Strength.

Channel: This setting specifies the default 802.11 channel used by the Wireless LAN

communication. In an Infrastructure type network without an Access Point active on the default channel, clients will scan through all available channels searching for a network with matching SSID.

- **Changing the Channel:** Changing the channel is only effective in Ad-Hoc networks.

Networks operating in Infrastructure mode automatically scan for a channel. The following table presents contains the operational channel frequency for several countries.

Appendix A Troubleshooting

Problem Solving

My computer does not recognize the T60H424.

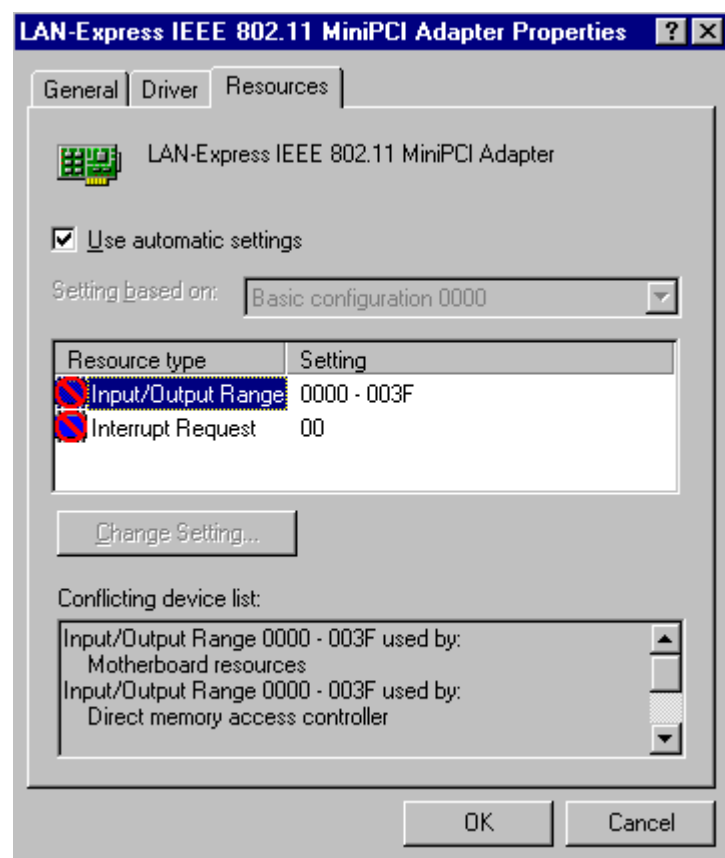
Probable Solution:

- The T60H424 is not properly inserted into the PCMCIA/MiniPCI slot.
- Ensure that the T60H424 has been inserted into an available PCMCIA/MiniPCI slot.

The T60H424 does not work properly.

Probable Solution:

- Insert the PCMCIA/MiniPCI adapter into Notebook's slot again. A beep should be heard if the adapter is properly inserted.

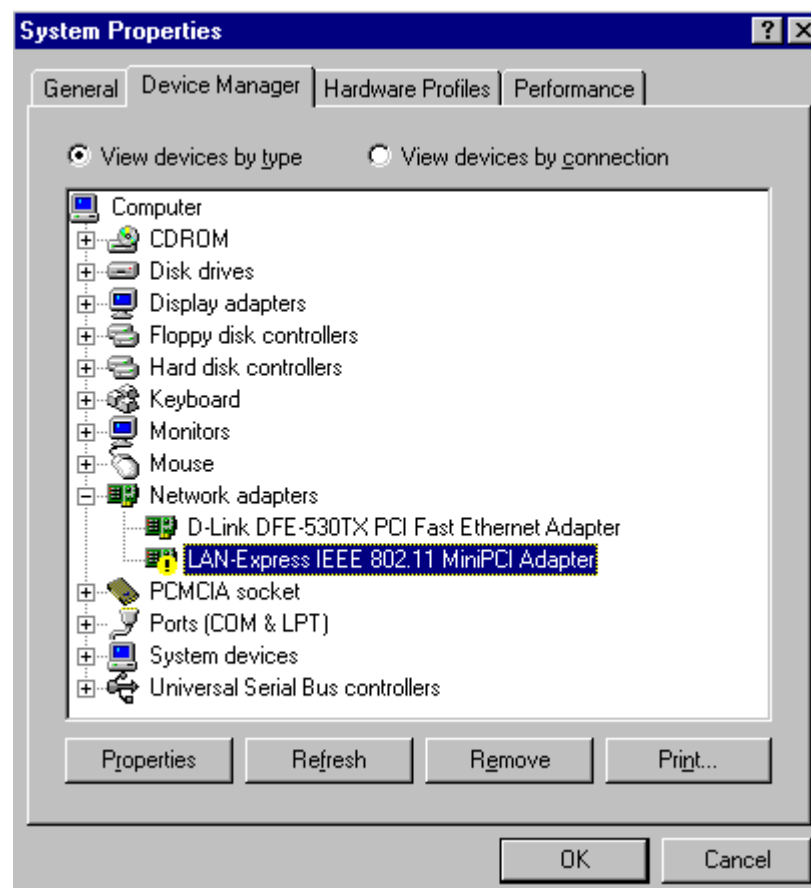


- Check the I/O cable that connects the RF module and the PCMCIA/MiniPCI adapter. The power LED(T60L198) indicator will be active if the cable is properly connected.
- For non-Windows 95/98 environments, ensure that a PCMCIA/MiniPCI card service driver is

installed in your computer.

- 1) Click on the Control Panel and then on PC-Card/MiniPCI. Check whether it has PCMCIA/MiniPCI card in one of the sockets or not. If you find "LAN-Express IEEE 802.11 PC-Card Adapter" or "LAN-Express IEEE 802.11 MiniPCI Adapter" in one of the sockets, it means the card is detected properly. If you see the yellow sign of question-mark(?), the resources are conflicting.
- 2) Right click on "My Computer" and then select Properties. Select the device Manager and click on the Network Adapter. You will find "LAN-Express IEEE 802.11 PC-Card Adapter" or "LAN-Express IEEE 802.11 MiniPCI Adapter" if it is installed successfully. If you see the Yellow sign the resources are conflicting. Click on PCMCIA/MiniPCI card and then on PCMCIA/MiniPCI Card service, you can see the status of PCMCIA/MiniPCI card. If there are yellow sign either on adapter or PCMCIA/MiniPCI card, please check followings.
- 2-1) Check if your Notebook supports 3.3V card.
- 2-2) Check if your Notebook has a free IRQ
- 2-3) Check that you have inserted the right card and have installed the proper driver.

If the T60H424 does not function after attempting the above steps, remove the PCMCIA adapter, and do the following:



- From the run window enter, c:\windows\system, locate and delete the Express.sys file
- Open the "Control Panel" double-click "System" and delete "LAN-Express IEEE 802.11 PC-card Adapter" or "LAN-Express IEEE 802.11 MiniPCI Adapter".
- Restart the PC and repeat the hardware and software installation steps outlined in

Chapters 3 and 4.

The T60H424 station cannot communicate with other computers linked via Ethernet in the Infrastructure configuration.

Probable Solution:

- Ensure that the T60H424 with which the station is associated is powered on.
- Confirm the station is configured with the same operating radio channel as the T60H424. If the IDs are different, change the T60H424 and all the stations within the BSS to another radio channel.
- Ensure that the station is configured with the same security options as the T60H424, and can be turned off and on with the same security key.
- Confirm that the BSS ID is the same as the T60H424 for a roaming disabled station.

Alternately confirm that the ESS ID is the same as the T60H424 for a roaming enabled Station

Appendix B Glossary

Access Point - An internetworking device that seamlessly connects wired and wireless networks together.

Ad-Hoc - An Ad-Hoc wireless LAN is a group of computers each with wireless adapters, connected as an independent wireless LAN.

Backbone - The core infrastructure of a network, the portion of the network that transports information from one central location to another central location. The information is then off-loaded onto a local system.

Base Station - In mobile telecommunication, a base station is the central radio transmitter/ receiver that maintains communication with the mobile radio telephone sets within range. In cellular and personal communications applications, each cell or microcell has its own base station; each base station in turn is interconnected with other cells' base.

BSS - Stands for "Basic Service Set." An Access Point associated with several wireless stations.

ESS - Stands for "Extended Service Set." More than one BSS can be configured as an Extended Service Set. An ESS is basically a roaming domain.

Ethernet - A popular local area data communications network, originally developed by Xerox Corp., which accepts transmission from computers and terminals. Ethernet operates on 10 Mbps baseband transmission over shielded coaxial cable or over shielded twisted pair telephone wire.

Infrastructure - An integrated wireless and wired LAN is called an Infrastructure configuration.

PCMCIA - Personal Computer Memory Card International Association, which develops standards for PC cards, formerly known as PCMCIA cards, are available in three "types" which are about the same length and width as credit cards, but range in thickness from 3.3 mm (Type I) to 5.0 mm (Type II) to 10.5 mm (Type III). These cards can be used for many functions, including memory storage, as landline modems and as wireless LAN.

Roaming - A function that allows one to travel with a mobile end system (wireless LAN mobile station, for example) through the territory of a domain (an ESS, for example) while continuously connecting to the infrastructure.

RTS Threshold – Transmitters contending for the medium may not hear each other. RTS/CTS mechanism can solve this “Hidden Node Problem”.

Product Specifications for T60H424 :

Radio: Complies with IEEE 802.11

**Frequency Band: 2400 ~ 2483.5MHz (for US, Canada, and ETSI
2400 ~ 2497MHz (for Japan)**

Modulation TYPE: CCK,BPSK,QPSK

Operating Channels: IEEE 802.11 compliant

11 channels (US, Canada)

13 channels (ETSI)

14 channels (Japan)

Radio Technology: Direct Sequence Spread Spectrum

Data Rate: 1 / 2 / 5.5 / 11 Mbps

Output Power: > +16dBm

**Receive sensitivity: Min. -76dBm for 11Mbps; Min. -80dBm for
5.5/2/1**

Mbps ;(@BER 10E-5)

**Antenna Type: De-attached PCB patch diversity antenna or
MMCX**

connector for external antenna

Current

**Consumption : 3.3 V/5 V , Tx mode 350 m A (Max.) ; Rx mode 230
m A (Max.);**

Package : PCMCIA Type II/MiniPCI Type III

Certification: FCC Part 15

ETSI 300.328

ARIB STD33 & T66

Driver : Windows 95/98/2000/ME

Warning

- This equipment must be installed and operated in accordance with provided instructions and a minimum 20 cm spacing must be provided between computer mounted antenna and person's body (excluding extremities of hands, wrist and feet) during wireless modes of operation.
- Optional vehicle mounted antenna must not exceed 5.11 dBi antenna gain and should be professionally installed.
- This device complies with Part 15 of the FCC Rules. Operation is subject to the following two conditions: (1) this device may not cause harmful interference, and (2) this device must accept any interference received, including interference that may cause undesired operation.

CAUTION

Any changes or modifications not expressly approved by the party responsible for compliance could void the authority to operate equipment.

Warning

"The antenna(s) used for this transmitter must be installed to provide a separation distance of at least 20 cm from all persons and must not be co-located or operating in conjunction with any other antenna or transmitter. End-users and installers must be provided with antenna installation instructions and transmitter operating conditions for satisfying RF exposure compliance."