

WiFi 2.4GHz_Rear_802.11b_Ch 11_0mm

Frequency: 2462 MHz; Duty Cycle: 1:1; Room Ambient Temperature: 23.5°C; Liquid Temperature: 22.8°C
Medium parameters used : $f = 2462 \text{ MHz}$; $\sigma = 1.801 \text{ S/m}$; $\epsilon_r = 37.91$; $\rho = 1000 \text{ kg/m}^3$

DASY5 Configuration:

- Area Scan Setting: Find Secondary Maximum Within: 2.0 dB and with a peak SAR value greater than 0.0012W/kg
- Electronics: DAE4 Sn1260; Calibrated: 2021/9/20
- Probe: EX3DV4 - SN7642; ConvF(8.12, 8.12, 8.12) @ 2462 MHz; Calibrated: 2022/3/2
- Sensor-Surface: 2mm (Mechanical Surface Detection)
- Phantom: ELI

Rear/802.11b/Area Scan (81x71x1): Interpolated grid: $dx=1.200 \text{ mm}$, $dy=1.200 \text{ mm}$

Maximum value of SAR (interpolated) = 0.772 W/kg

Rear/802.11b/Zoom Scan (7x7x7)/Cube 0: Measurement grid: $dx=5\text{mm}$, $dy=5\text{mm}$, $dz=5\text{mm}$

Reference Value = 10.55 V/m; Power Drift = -0.08 dB

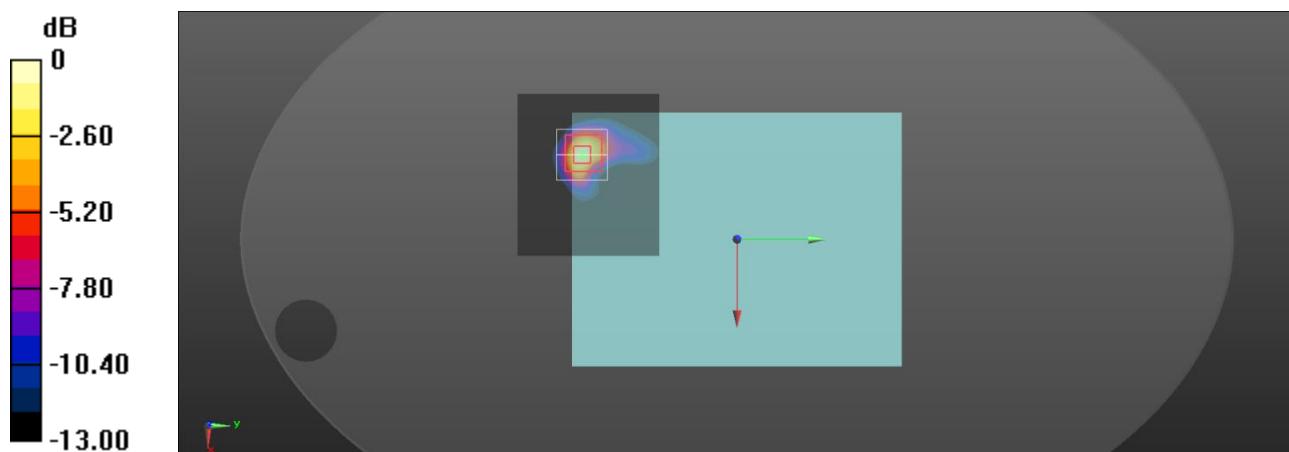
Peak SAR (extrapolated) = 1.13 W/kg

SAR(1 g) = 0.427 W/kg; SAR(10 g) = 0.160 W/kg

Smallest distance from peaks to all points 3 dB below = 6.7 mm

Ratio of SAR at M2 to SAR at M1 = 40.4%

Maximum value of SAR (measured) = 0.757 W/kg



0 dB = 0.757 W/kg = -1.21 dBW/kg

WiFi 5.2GHz_Edge 4_802.11ac(VHT80)_Ch 42_0mm

Frequency: 5210 MHz; Duty Cycle: 1:1; Room Ambient Temperature: 23.1°C; Liquid Temperature: 22.6°C
Medium parameters used: $f = 5210$ MHz; $\sigma = 4.645$ S/m; $\epsilon_r = 35.337$; $\rho = 1000$ kg/m³

DASY5 Configuration:

- Area Scan Setting: Find Secondary Maximum Within: 2.0 dB and with a peak SAR value greater than 0.0012W/kg
- Electronics: DAE4 Sn877; Calibrated: 2022/4/28
- Probe: EX3DV4 - SN3665; ConvF(5.45, 5.45, 5.45) @ 5210 MHz; Calibrated: 2022/8/28
- Sensor-Surface: 2mm (Mechanical Surface Detection)
- Phantom: ELI

Edge 4/802.11ac(VHT80)/Area Scan (91x131x1): Interpolated grid: $dx=1.000$ mm, $dy=1.000$ mm
Maximum value of SAR (interpolated) = 2.15 W/kg

Edge 4/802.11ac(VHT80)/Zoom Scan (7x7x12)/Cube 0: Measurement grid: $dx=4$ mm, $dy=4$ mm, $dz=2$ mm

Reference Value = 5.828 V/m; Power Drift = 0.17 dB

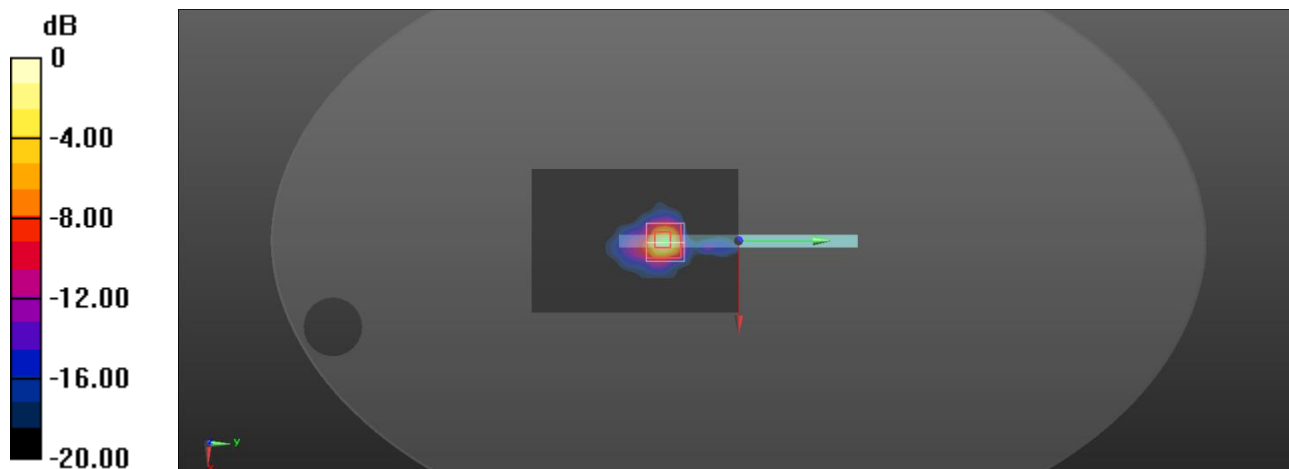
Peak SAR (extrapolated) = 5.13 W/kg

SAR(1 g) = 1.12 W/kg; SAR(10 g) = 0.246 W/kg

Smallest distance from peaks to all points 3 dB below = 5.4 mm

Ratio of SAR at M2 to SAR at M1 = 55.8%

Maximum value of SAR (measured) = 2.32 W/kg



0 dB = 2.32 W/kg = 3.65 dBW/kg

WiFi 5.2GHz_Edge 4_802.11ac(VHT80)_Ch 42_0mm_Repeated one

Frequency: 5210 MHz; Duty Cycle: 1:1; Room Ambient Temperature: 23.1°C; Liquid Temperature: 22.6°C
Medium parameters used: $f = 5210$ MHz; $\sigma = 4.645$ S/m; $\epsilon_r = 35.337$; $\rho = 1000$ kg/m³

DASY5 Configuration:

- Area Scan Setting: Find Secondary Maximum Within: 2.0 dB and with a peak SAR value greater than 0.0012W/kg
- Electronics: DAE4 Sn877; Calibrated: 2022/4/28
- Probe: EX3DV4 - SN3665; ConvF(5.45, 5.45, 5.45) @ 5210 MHz; Calibrated: 2022/8/28
- Sensor-Surface: 2mm (Mechanical Surface Detection)
- Phantom: ELI

Edge 4/802.11ac(VHT80)/Area Scan (91x131x1): Interpolated grid: $dx=1.000$ mm, $dy=1.000$ mm
Maximum value of SAR (interpolated) = 2.02 W/kg

Edge 4/802.11ac(VHT80)/Zoom Scan (7x7x12)/Cube 0: Measurement grid: $dx=4$ mm, $dy=4$ mm, $dz=2$ mm

Reference Value = 6.250 V/m; Power Drift = -0.01 dB

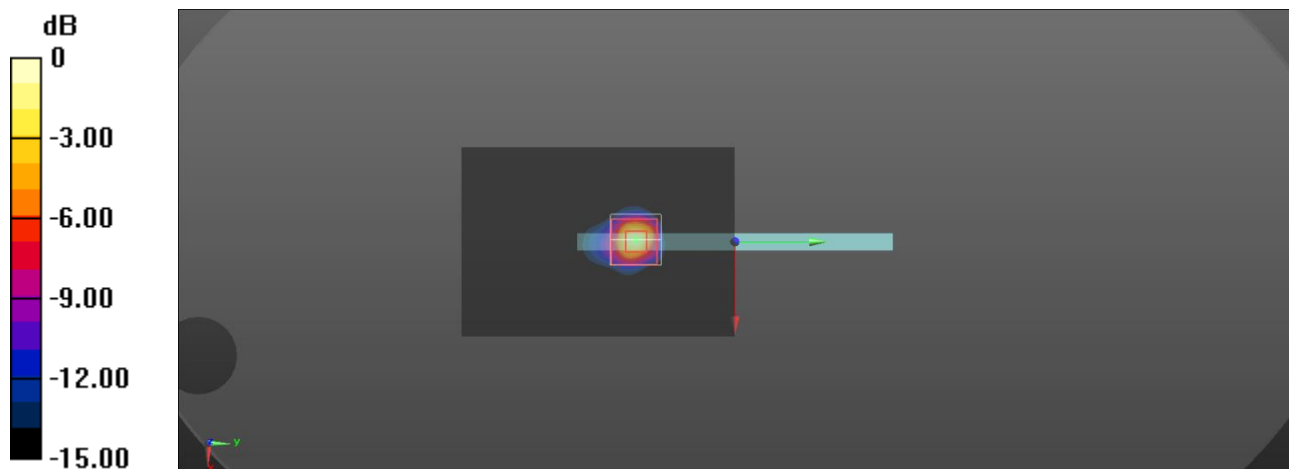
Peak SAR (extrapolated) = 5.01 W/kg

SAR(1 g) = 1.09 W/kg; SAR(10 g) = 0.244 W/kg

Smallest distance from peaks to all points 3 dB below = 5.1 mm

Ratio of SAR at M2 to SAR at M1 = 55.6%

Maximum value of SAR (measured) = 2.37 W/kg



0 dB = 2.37 W/kg = 3.75 dBW/kg