

USE & CARE INSTRUCTIONS



Air Purifier CF-8700AS

READ AND SAVE THESE INSTRUCTIONS WARNINGS

Failure to comply with the warnings listed below may result in electric shock or serious injury.



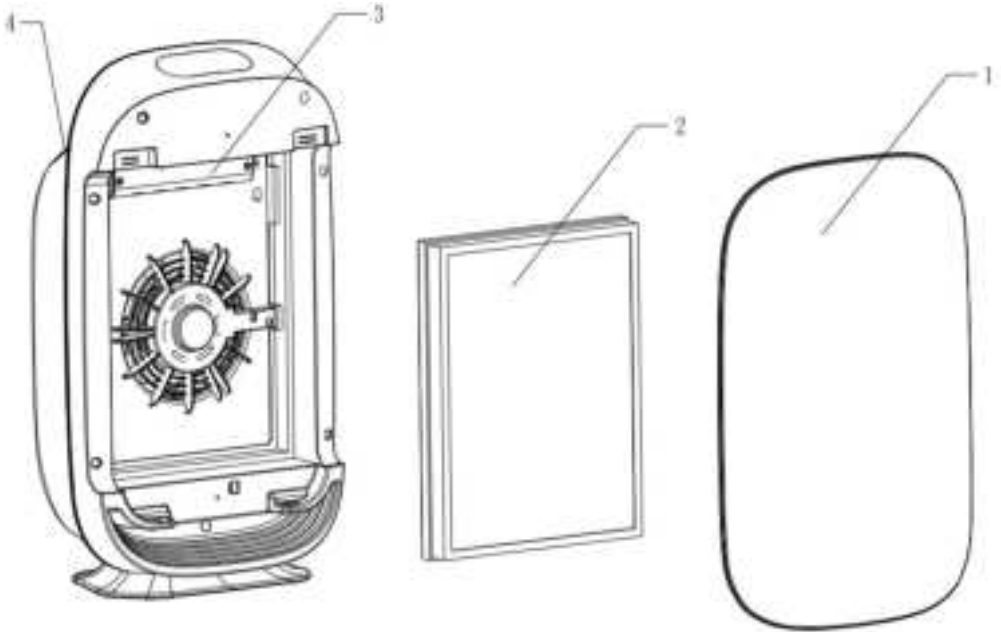
This product should be used only in accordance with the specifications outlined in this manual. Usage other than what has been specified here may result in serious injury.

To reduce the risk of electrical shock, fire or injury to persons: Read all instructions before using the air purifier.

- This appliance can be used by children aged from 8 years and above and persons with reduced physical, sensory or mental capabilities or lack of experience and knowledge if they have been given supervision or instruction concerning use of the appliance in a safe way and understand the hazards involved. Children shall not play with the appliance. Cleaning and user maintenance shall not be made by children without supervision.
- This appliance is not intended for use by persons (including children) with reduced physical, sensory or mental capabilities, or lack of experience and knowledge, unless they have been given supervision or instruction concerning use of the appliance by a person responsible for their safety.
- If the supply cord is damaged, it must be replaced by the manufacturer, its service agent or similarly qualified persons in order to avoid a hazard.
- This appliance is not a substitute for proper ventilation, regular vacuum cleaning or use of an extractor hood or fan while cooking.
- Leave at least 20cm free space behind and on both sides of the appliance and leave at least 30cm free space above the appliance.
- During the operation of the product, please place the unit at least 2m away from equipment which involve electric wave such as televisions, radios or wave clocks, in case electrical interference occurs to such equipment.
- Remove the power plug from the wall outlet before cleaning the unit and when not using the unit. Electrical shock from bad insulation and or fire from short circuit may occur as a result.

- When removing the power plug, always hold the plug and never pull the cord. Electrical shock and/or fire from short circuit may occur as result.
- Do not use the air purifier if the power cord or plug is damaged or the connection to the wall outlet is loose.
- Do not insert fingers or foreign objects into the intake or air outlet.
- Do not use this air purifier near gas appliances or fireplaces.
- Do not block the air inlet and outlet, e.g. by placing items on the air outlet or in front of the air inlet.
- Do not let water or any other liquid or flammable detergent enter the appliance to avoid electric shock and/or a fire hazard.
- Do not clean the appliance with water or any other liquid or a (flammable) detergent to avoid electric shock and/or a fire hazard.
- Do not place anything on top of the appliance and do not sit on the appliance.
- Do not place the appliance directly below an air conditioner to prevent condensation from dripping into the appliance.
- Do not use this appliance when you have used indoor smoke-type insect repellents or in places with oily residues, burning incense or chemical fumes.
- Do not use the appliance in a room with major temperature changes, as this may cause condensation inside the appliance.
- Do not use the appliance in wet surroundings or in surroundings with high ambient temperatures, such as the bathroom, toilet or kitchen.

Structure



1. Front panel
2. Filter: washable pre-filter, HEPA filter and activated carbon filter
3. UV-C lamp
4. Air outlet

Before first use

Note: The appliance comes with all filters fitted inside, but the packaging of the filters need to be removed before using the appliance.

1. Carefully remove your air purifier from box and plastic bag.
2. Select a firm, level and flat location for the air purifier.

*For proper air flow, locate the unit at least 1 foot from any wall or furniture.

*Make sure none of the grills are blocked.

3. Before using, remove the filters,unpack them and place them back to the appliance.
4. Plug the power cord into a right voltage AC outlet.

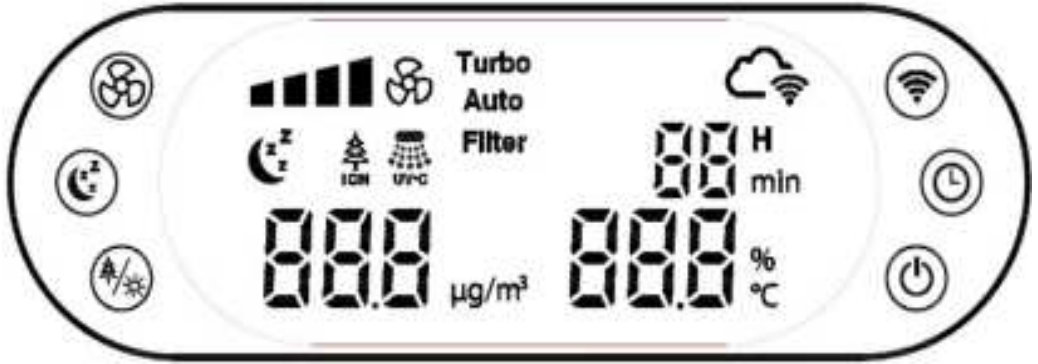
IMPORTANT: When moving the air purifier, always lift unit by the carrying handle located on back.

Purification system

Improve your indoor air quality with your new Air Cleaning System. Multiple levels of cleaning include a combination HEPA filter that captures allergens, and Activated Carbon filter to remove odors. UV-C light technology enhances germ-killing.

1. **Washable Pre-filter:** Traping big particles like human hair, pet hair and bird feather etc., help extend life of HEPA and Activated Carbon filter.
2. **HEPA filter:** The high-performance HEPA filter is over 99.97 % efficient in trapping all allergens and airborne contaminates down to 0.3 micron in size such as: lung damaging dust, mold spores, plant spores, pet dander, pollen etc..
3. **Activated Carbon filter:** The activated carbon filter reduce the toxic fumes, foul odors and other VOCs effectively.
4. **UV-C:** UV Light (254NM) destroys micro-organisms such as germs, viruses, bacteria and fungi (such as mold toxins).

Operation Guidance



1. Power button: Press to turn ON/Off the unit.



2. Fan speed: Press this button one or more times to select the desired fan speed.



3. Sleep mode: Press the button to turn on/off the sleep mode. In sleep mode, the *moon* indicator flickers 5s, display and all LED turns off, device runs in ultra-quiet mode. Press any button can cancel the sleep mode.



4. UV/ION button: Press this button to turn on/off UV lamp and ION function.



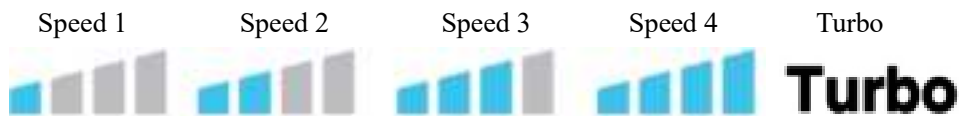
5. Wifi button: Press and hold for 5 seconds to active or reset wifi connection.



6. Timer setting: Press this button to set working time, device will be turn off when time is up the setting (from 1 to 24 hours).

Note: Filter Reset: Filter symbol on display indicate you to change a new filter. Replace a new filter according to the instruction in page 6.

Fan speed indicator



UV light indicator



Auto operation indicator

Auto

Timer indicator



Sleep mode operation



PM 2.5 indicator



Temperature and Humidity indicator



Filter change indicator



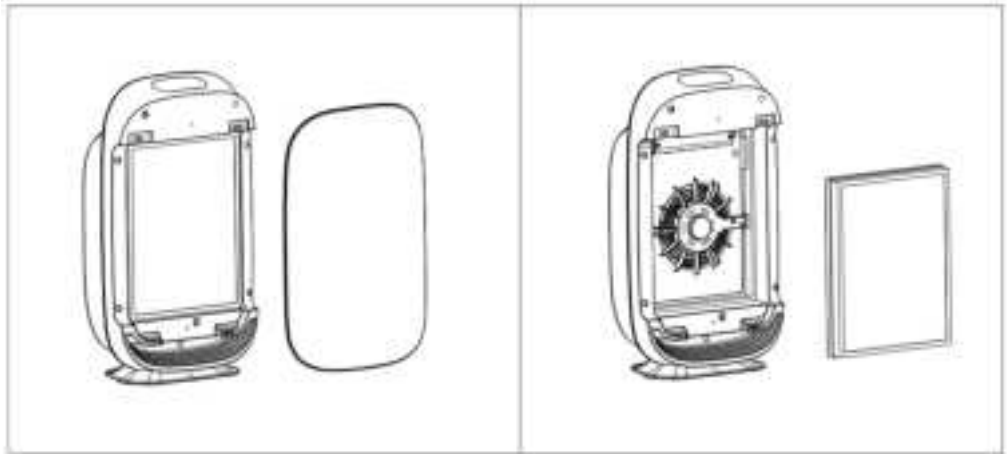
Air quality indicator

Red:	Heavily Polluted	PM2.5: 0-49.9
Orange:	Light polluted	PM2.5: 50-99.9
Yellow:	Moderate	PM2.5: 100-149.9
Blue:	Good	PM2.5: ≥ 150

Filter replace

The FILTER icon lighting up indicates that it is time to replace the filter. Replace the filter according to the following instruction then press the RESET button and hold for 30 seconds to restart the system, the warning light will off.

Position of reset button: on the right side, open the cover you can see the red button,



1. Open the front cover.
2. Remove the combination filter by pull the two strips in both sides.
3. Insert new combination filter into the unit.
4. Reattach the front cover of the unit and securely latch into place.
5. Press and hold reset button for 30 seconds to reset filter.

▲ Pre-filter maintenance

- The pre-filter can be washed by water directly, and make sure it's dry when place back to the appliance.
- Do not use sharp object to clean the pre-filter, in case any damage.
- Pre-filter should be replaced with the rest filters.

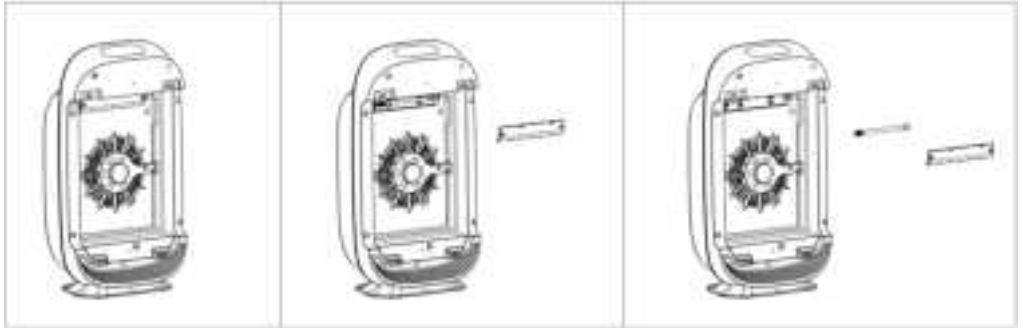
▲ HEPA and Activated Carbon filter maintenance and replace

- Every three months, take off the HEPA and Activated Carbon filter, put it under the sunshine to make it dry and use vacuum cleaner or soft brush to clean the dust on the filter. It will help extend the life of the filter and keep the HEPA filter performance.

-Both HEPA and Activated Carbon filter are no washable.

-HEPA and Activated Carbon filter can be used about 1 year, but the actual life based on the air quality condition and daily maintenance.

UV Lamp replace



1. Open the UV lamp cover by a screw driver.
2. Grasp the wire connector and gently unplug it, remove the UV bulb from unit.
3. Install the new UV lamp and re-attach the cover.

Note: Do not watch the operating UV lamp directly.

Maintenance caution

▲ Product cleaning

- Make sure unplug before cleaning the appliance.
- Do not put the appliance into the water or use the water to wash directly.
- Do not use any corrosive or flammable detergent to clean the appliance, in case any damage.
- Can use the soft cloth with daily cleanser to clean the appliance, and make sure the appliance is dry after cleaning.
- Regularly clean the inside and surface, to prevent dust gather.
- Regularly clean the air inlet and air outlet.
- Regularly clean the dust sensor by a cotton swab to protect its sensitiveness.

▲ When long time no use

- If long time no use, please packed and store well to protect the appliance.
- When use after long time's store, please do as below
 1. Clean the pre-filter and make sure it's dry.
 2. Use soft cloth to clean the HEPA and Activated Carbon filter, and make sure it's dry.
 3. Use to soft cloth to clean the air inlet and air outlet.

▲ Caution

Properly use and regularly maintenance can make the appliance operating well and extend the life of the appliance, non-professionals do not disassemble the appliance, in case electric shock or any damage.

FCC warning:

This device complies with part 15 of the FCC Rules. Operation is subject to the following two conditions: (1) This device may not cause harmful interference, and (2) this device must accept any interference received, including interference that may cause undesired operation.

Any Changes or modifications not expressly approved by the party responsible for compliance could void the user's authority to operate the equipment.

This equipment has been tested and found to comply with the limits for a Class B digital device, pursuant to part 15 of the FCC Rules. These limits are designed to provide reasonable protection against harmful interference in a residential installation. This equipment generates uses and can radiate radio frequency energy and, if not installed and used in accordance with the instructions, may cause harmful interference to radio communications. However, there is no guarantee that interference will not occur in a particular installation. If this equipment does cause harmful interference to radio or television reception, which can be determined by turning the equipment off and on, the user is encouraged to try to correct the interference by one or more of the following measures:

- Reorient or relocate the receiving antenna.
- Increase the separation between the equipment and receiver.
- Connect the equipment into an outlet on a circuit different from that to which the receiver is connected.
- Consult the dealer or an experienced radio/TV technician for help.

The antenna(s) used for this transmitter must be installed to provide a separation distance of at least 20 cm from all persons and must not be collocated or operating in conjunction with any other antenna or transmitter, End-Users must be provided with transmitter operation conditions for satisfying RF exposure compliance.

Canada warning:

This device complies with Industry Canada licence-exempt RSS standard(s). Operation is subject to the following two conditions: (1) This device may not cause interference, and (2) This device must accept any interference, including interference that may cause undesired operation of the device.

The antenna(s) used for this transmitter must be installed to provide a separation distance of at least 20 cm from all persons and must not be collocated or operating in conjunction with any other antenna or transmitter, End-Users must be provided with transmitter operation conditions for satisfying RF exposure compliance.

Le présent appareil est conforme aux CNR d'Industrie Canada applicables aux appareils radio exempts de licence. L'exploitation est autorisée aux deux conditions suivantes:

- (1) l'appareil ne doit pas produire de brouillage, et
- (2) l'utilisateur de l'appareil doit accepter tout brouillage radioélectrique subi, même si le

brouillage est susceptible d'en compromettre le fonctionnement.

L'antenne (s) utilisée (s) pour cet émetteur doit être installée de manière à fournir une distance de séparation d'au moins 20 cm de toutes les personnes et ne doit pas être colocalisée ou fonctionner en conjonction avec toute autre antenne ou émetteur, les utilisateurs finaux doivent être fournis avec le fonctionnement de l'émetteur conditions pour satisfaire la conformité d'exposition RF