

**GT78-V7/GT78-V8**  
**Rugged Android™ Handheld Device**

**User's Manual**



---

## Copyright

Copyright © 2017 AMobile Intelligent Corp. All Rights Reserved.

This document contains proprietary information protected by copyright. No part of this manual may be reproduced by any mechanical, electronic, or other means in any form without prior written permission of the manufacturer.

## Disclaimer

The information in this document is subject to change without prior notice in order to improve the reliability, design and function. It does not represent a commitment on the part of the manufacturer.

Under no circumstances will the manufacturer be liable for any direct, indirect, special, incidental, or consequential damages arising from the use or inability to use the product or documentation, even if advised of the possibility of such damages.

## About This Manual

This user's manual provides the general information and installation instructions for the product. The manual is meant for the experienced users and integrators with hardware knowledge of personal computers. If you are not sure about any description in this manual, consult your vendor before further handling.

We recommend that you keep one copy of this manual for the quick reference for any necessary maintenance in the future. Thank you for choosing AMobile products.

本器材須經專業工程人員安裝及設定，始得設置使用，且不得直接  
販售給一般消費者

---

## Safety Symbols



This symbol of “CAUTION” indicates that there is a danger of injury to the user or a risk of damage to the product, should warning notices be disregarded.



Battery Recycle



This symbol indicates electrical warning.



This symbol indicates that a potential hazard to personal safety exists from a laser source. When this symbol is displayed in this manual, pay special attention to the specific safety information associated with the symbol

**CAUTION**  
**RISK OF EXPLOSION IF BATTERY IS REPLACED**  
**BY AN INCORRECT TYPE.**  
**DISPOSE OF USED BATTERIES ACCORDING**  
**TO THE INSTRUCTIONS**



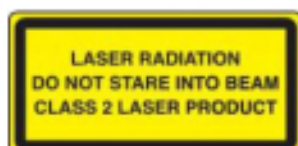
Do not use the power adapter that isn't made for the equipment. Supplying the equipment with inappropriate voltage may cause harm to the battery or, even worse, burn the equipment.



To prevent possible hearing damage, do not listen at high volume levels for long periods

## Laser Safety

The device's barcode scanner that uses laser lights is a class 2 laser product. DO NOT stare into the laser beams or point the laser beam at anyone's eyes when the barcode scanner is in operation.



## Warranty

This product is warranted to be in good working order during the warranty period. Should this product fail to be in good working order at any time during this period, we will, at our option, replace or repair it at no additional charge except as set forth in the following terms. This warranty does not apply to products damaged by misuse, modifications, accident or disaster.

Vendor assumes no liability for any damages, lost profits, lost savings or any other incidental or consequential damage resulting from the use, misuse of, or inability to use this product. Vendor will not be liable for any claim made by any other related party.

Vendors disclaim all other warranties, either expressed or implied, including but not limited to implied warranties of merchantability and fitness for a particular purpose, with respect to the hardware, the accompanying product's manual(s) and written materials, and any accompanying hardware. This limited warranty gives you specific legal rights.

Return authorization must be obtained from the vendor before returned merchandise will be accepted. Authorization can be obtained by calling or faxing the vendor and requesting a Return Merchandise Authorization (RMA) number. Returned goods should always be accompanied by a clear problem description.

---

# FCC

## Federal Communications Commission (FCC) Statement

15.21

You are cautioned that changes or modifications not expressly approved by the part responsible for compliance could void the user's authority to operate the equipment.

15.105(b)

This equipment has been tested and found to comply with the limits for a Class B digital device, pursuant to part 15 of the FCC rules. These limits are designed to provide reasonable protection against harmful interference in a residential installation. This equipment generates, uses and can radiate radio frequency energy and, if not installed and used in accordance with the instructions, may cause harmful interference to radio communications. However, there is no guarantee that interference will not occur in a particular installation. If this equipment does cause harmful interference to radio or television reception, which can be determined by turning the equipment off and on, the user is encouraged to try to correct the interference by one or more of the following measures:

- Reorient or relocate the receiving antenna.
- Increase the separation between the equipment and receiver.
- Connect the equipment into an outlet on a circuit different from that to which the receiver is connected.
- Consult the dealer or an experienced radio/TV technician for help.

**This device complies with Part 15 of the FCC Rules. Operation is subject to the following two conditions:**

- 1) this device may not cause harmful interference and
- 2) this device must accept any interference received, including interference that may cause undesired operation of the device.

### **FCC RF Radiation Exposure Statement:**

1. This Transmitter must not be co-located or operating in conjunction with any other antenna or transmitter.
2. This equipment complies with RF radiation exposure limits set forth for an uncontrolled environment. This equipment should be installed and operated with a minimum distance of 0 cm between the radiator and your body.



**Caution: Exposure to Radio Frequency Radiation.**

1. To comply with the Canadian RF exposure compliance requirements, this device and its antenna must not be co-located or operating in conjunction with any other antenna or transmitter.
2. To comply with RSS 102 RF exposure compliance requirements, a separation distance of at least 10 cm must be maintained between the antenna of this device and all persons.

**Attention: exposition au rayonnement radiofréquence.**

1. Pour se conformer aux exigences de conformité RF canadienne l'exposition, cet appareil et son antenne ne doivent pas être co-localisés ou fonctionnant en conjonction avec une autre antenne ou transmetteur.
2. Pour se conformer aux exigences de conformité CNR 102 RF exposition, une distance de séparation d'au moins 10 cm doit être maintenue entre l'antenne de cet appareil et toutes les personnes

Operation in the band 5150-5250 MHz is only for indoor use to reduce the potential for harmful interference to co-channel mobile satellite systems.

La bande 5 150-5 250 MHz est réservés uniquement pour une utilisation à l'intérieur afin de réduire les risques de brouillage préjudiciable aux systèmes de satellites mobiles utilisant les mêmes canaux.

For the frequency 5600-5650 MHz, no operation is permitted

Pour la fréquence 5600-5650 MHz, aucune opération est autorisée.

---

# Chapter 1

## Introduction

---



## 1.2 Package Contents

Upon opening the package, carefully inspect the contents. If any of the items is missing or appears damaged, contact your local dealer or distributor. The package should contain the following items:



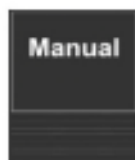
7.85" Rugged Android™ Handheld Device



Rechargeable Li-ion Battery Pack (Pre-installed)



USB Cable



User Manual

GT-78V hasn't LTE function in US version

## 1.3 Parts of the Device



1	Power button	9	Scan key
2	Barcode scanner	10	Speaker
3	Pogo pin	11	Battery
4	USB connector	12	Camera flashlight
5	Front Camera	13	Rear Camera
6	Light sensor	14	NFC
7	Touch panel	15	Volume key
8	Microphone	16	SD card slot

## 1.4 Dimension



---

# Chapter2

## Getting Started

---

## 2.1 Installing microSD and SIM Card

To install the microSD card and/or SIM card:

### 2.1.1 Installing microSD card



**Figure 2-1** Screw off and remove the cover.



**Figure 2-2** Take down the module.



**Figure 2-3** Open the aerial terminals on the both sides above.



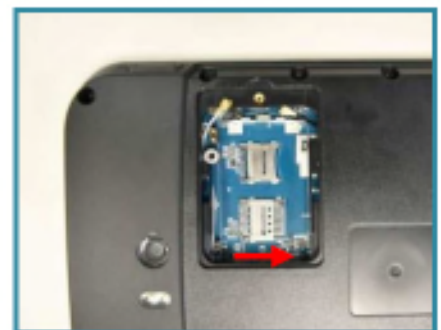
**Figure 2-4** Press the metal dome above to flip the module out.



**Figure 2-5** Follow the direction of red arrow to open the lid of mSD slot.



**Figure 2-6** Open the lid and insert the mSD card into the slot



**Figure 2-7** Close the lid and follow the direction to lock

## 2.2.1 Charging the Battery

To charge the battery using a USB port:

1. Using the USB cable that comes with the device, connect the small end of the cable to the USB port on the device.
2. Then connect the other end of the USB cable to the USB port.

## 2.2.2 Checking the Battery Level

When the charging is in process, a battery indicator will appear in the status bar showing the charging percentage. Unplug the USB cable from the device when the battery is fully charged.

## 2.3 Installing/Replacing the Battery

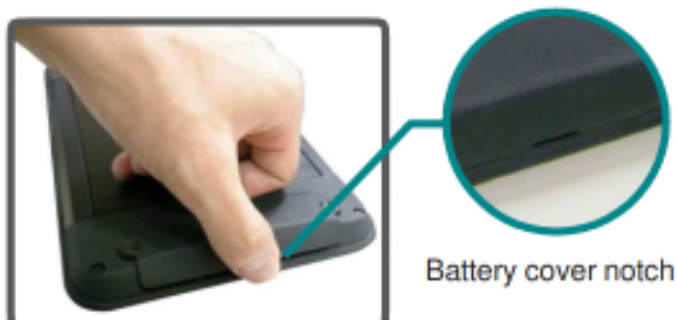
In case you need to install or replace the battery, follow the steps below to access the battery chamber and replace the battery.

### 2.3.1 Accessing Battery Chamber

1. Place the device on a flat surface, with the rear side facing up. Loosen the retaining screws on the battery cover with a coin.



2. Remove the battery cover using the notch located on the bottom edge.





3. The battery is in a compartment inside. Its opening is covered by a protective lid. Insert the tip of your finger onto the top of the cover and remove it.



4. Then you can remove the battery from the chamber.



### 2.3.2 Installing Battery

1. To install the battery, orient the battery so that the contact pins faces towards the compartment opening.





2. Slide the battery into the battery chamber.



3. To restore the protective lid, make sure the lid is oriented as shown in the photo to the right.



4. Align the top edge of the lid with the top of the opening.



5. Press the lid firmly into place to ensure it is secured.



6. Replace the battery cover and secure the retaining screws with a coin.

## Using the Barcode Scanner

Barcode scanner is an optional feature on the GT78-V. Depending on your models, your GT78-V might be equipped with 2D barcode scanner. This section will walk you through the basic operations. To get the information on supported barcode formats

---

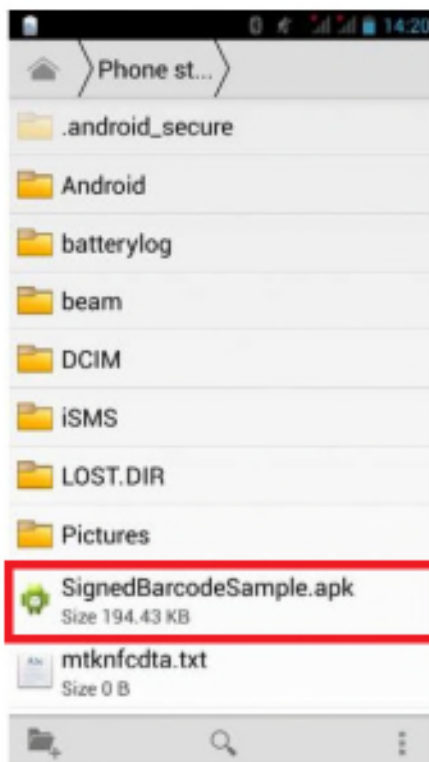
**Caution:** The barcode scanner uses laser lights to scan barcodes. DO NOT stare into the laser beams or point the laser beam at anyone's eyes when the barcode scanner is in operation.



### 1. Installing APK File

As of the time of time of release, the GT78-V may not have the barcode scanner software installed. If this is the case, you must install the APK file on your GT78-V first in order to activate the scanner function.

1. Download the APK file (**SignedBarcodeSample.apk**) from the Partner Zone of our website and save the file to your computer first.
2. Connect the GT78-V to that computer using a USB cable. The GT78-V will prompts you to choose a USB option. Select "**USB storage**" to transfer files between your computer and the GT78-V.
3. Copy the APK file from your computer to the GT78-V's internal USB storage or SD card. Then disconnect your computer from the GT78-V.
4. On the GT78-V, use the **File Manager** App to navigate to the APK file.



5. Tap the APK file and then follow the prompts to install the application.

## 2. Scanning the Barcode

Generally a third-party barcode application will be used to process the data read by the scanner. This user manual will not cover these applications. The following steps serve as an example only to show the basic operation of the barcode scanner.

1. To scan a 2D barcode like QR code: Launch the web browser.
2. Point the scanner window at the barcode and press either of the two **Scan** keys. The scanner will project an aiming beam.
3. According to the barcode scanned, the scanned data is displayed in the text field or an action is triggered .



### 3. Supported Barcode Formats

#### 2D Model

Type	Formats
Linear	UPC/EAN/JAN, GS1 DataBar, Code 39, Code 128, Code 32, Code 93, Codabar/NW7, Interleaved 2 of 5, Code 2 of 5, Matrix 2 of 5, MSI, Telepen, Trioptic, China Post;
2D Stacked	PDF417, MicroPDF417, GS1 Composite;
2D Matrix	Aztec Code, Data Matrix, QR Code, Micro QR Code, MaxiCode, Han Xin Code;
Postal	Intelligent Mail Barcode, Postal-4i, Australian Post, British Post, Canadian Post, Japanese Post, Netherlands (KIX) Post, Postnet, Planet Code;
OCR Option	OCR-A, OCR-B, E13B (MICR)

---

Europe

Technical feature	Operating Frequency range	maximum radio-frequency power
GPS reveiver	1575.42	
NFC	13.56	-12.01 dBuA/m @10m
Bluetooth	2402~2480	1.27
Bluetooth LE	2402~2480	1.33
802.11 b/g/n	2412~2472	17.31
802.11 a/n	5180~5320	16.14
GSM 900	880~915, 925~960	33
GSM 1800	1710~1785, 1805~1880	33
WCDMA Band1	1920~1980, 2110~2170	22
WACMA Band8	880~915, 925~960	22
LTE Band1	1920~1980, 2110~2170	22
LTE band3	1710~1785, 1805~1880	22
LTE band7	2500~2570, 2620~2690	22
LTE band8	880~915, 925~960	22
LTE band20	832~862, 791~821	22



Hereby, Hong Kong AMobile Intelligent Corp. Limited Taiwan Branch declares that the radio equipment type [designation] is in compliance with Directive 2014/53/EU  
The full test of the EU declaration of conformity is available at the following internet address <https://www.amobile-solutions.com/>

**Restriction of 5GHz pictogram and country table**

This production is restricted indoor use only for 5150-5250MHz



AT	BE	BG	CH	CY	CZ	DE	DK	EE	EL	ES
FI	FR	HR	HU	IE	IS	IT	LI	LT	LU	LV
MT	NL	NO	PL	PT	RO	SE	SI	SK	TR	UK

SAR is measured with the device at     mm to the body, while transmitting at the highest certified output level in all frequency bands of the device.

The maximum SAR value is     W/kg(head/body) and     W/kg(limbs) averaged over 10 gram of tissue