



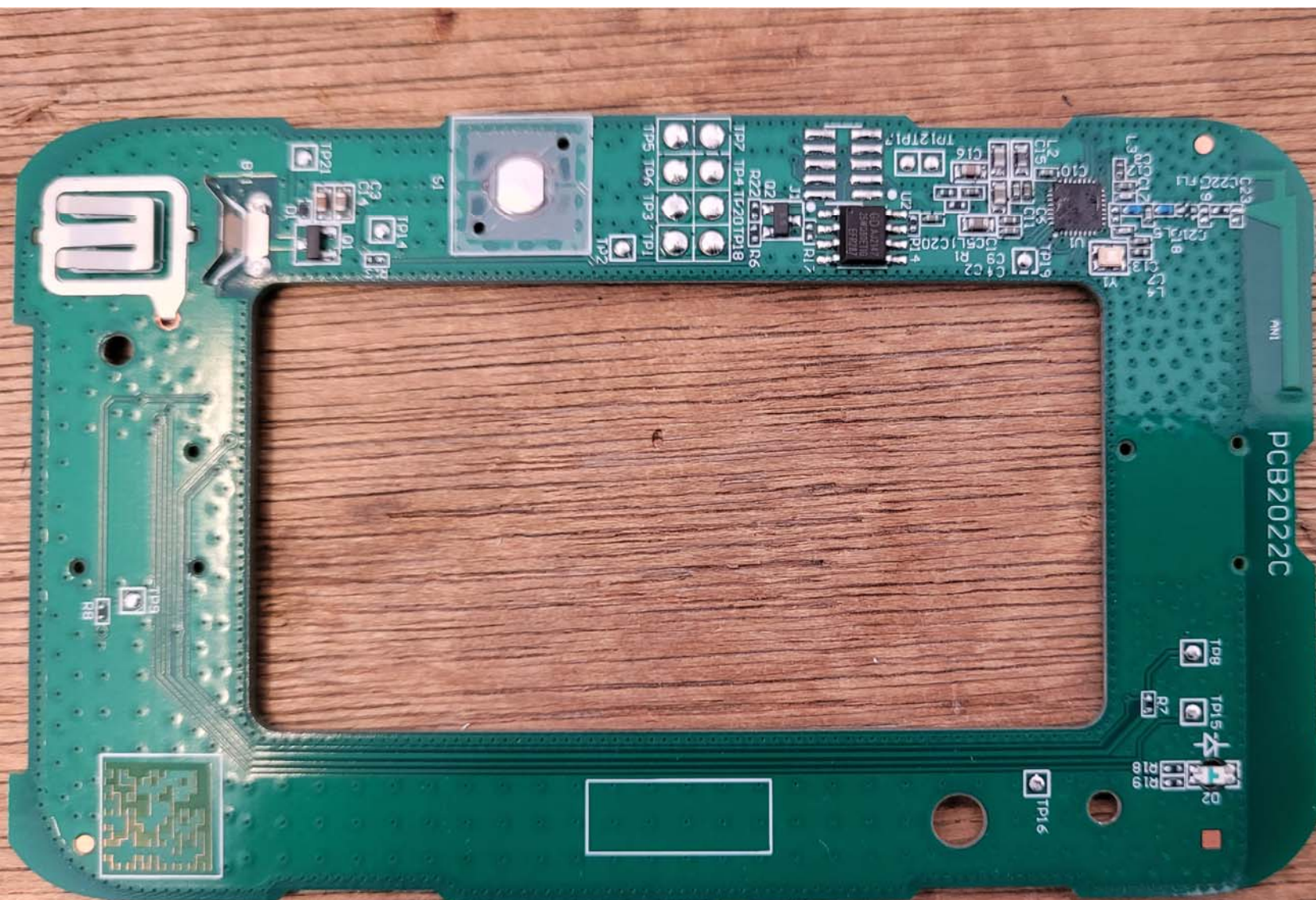
Photo showing PCB on left hand side - Right hand side is the external Panel backplate



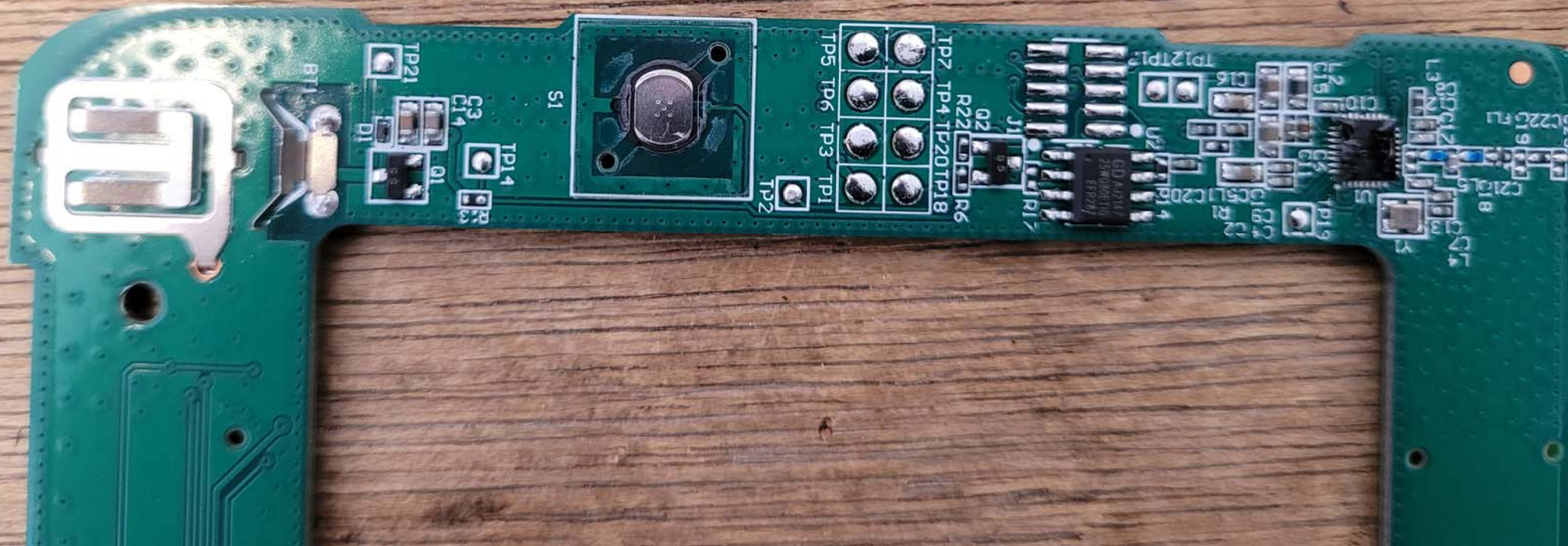
Photo showing PCB on left hand side
Right hand side is the external panel backplate



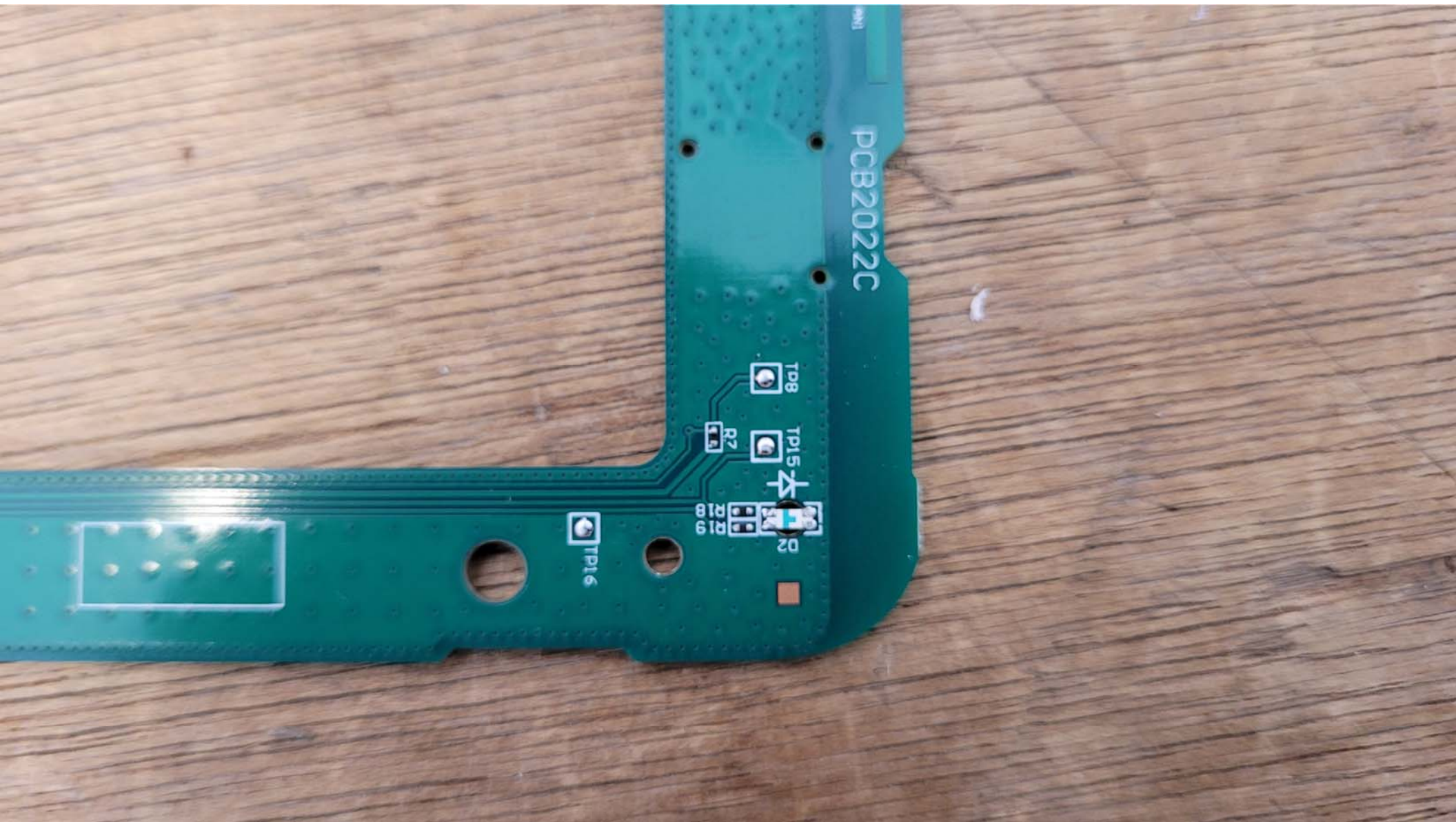
Inside View of PCB with Backplates shown



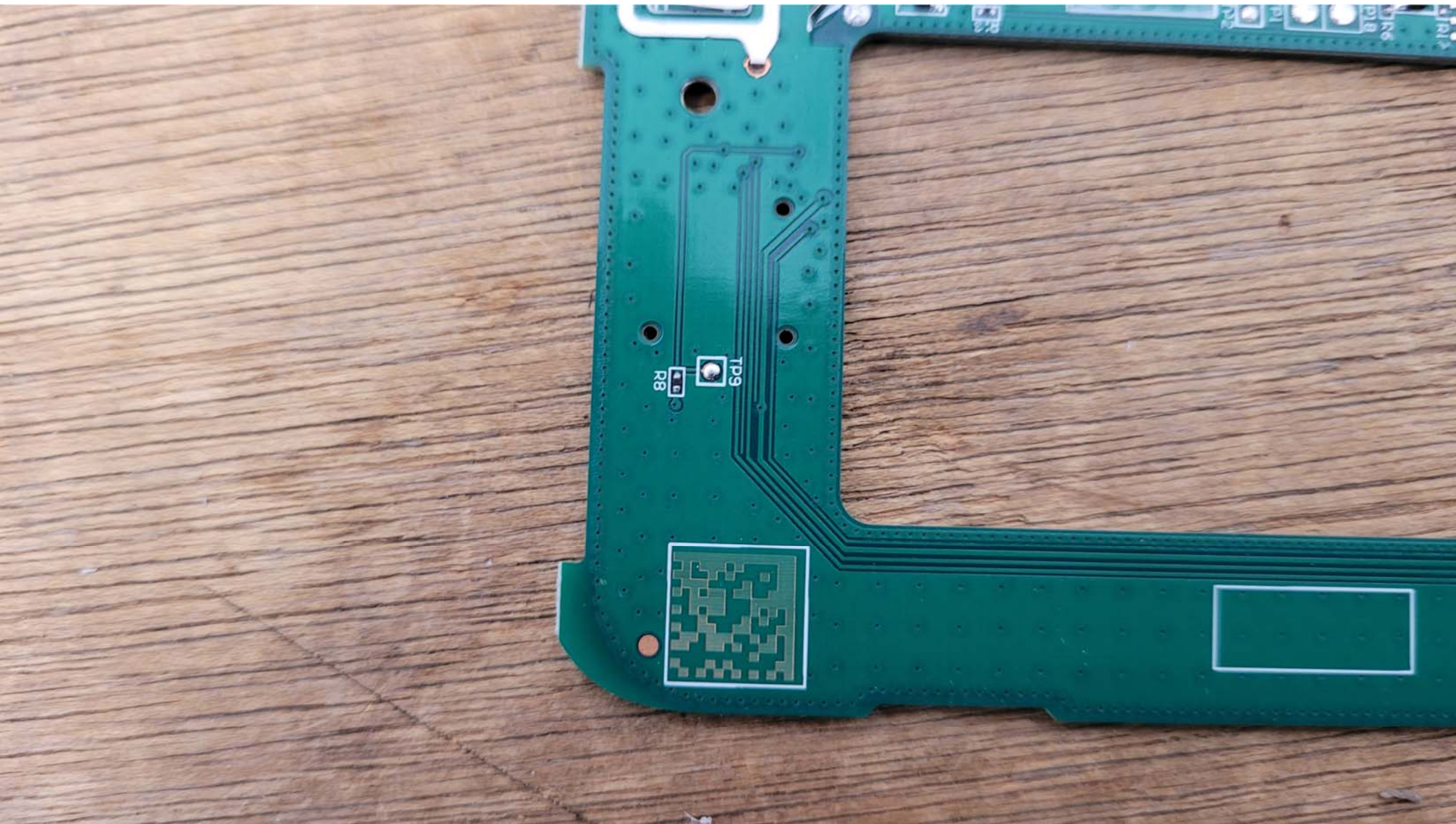
Top View of the PCB



Top View of the PCB - Closeup #1



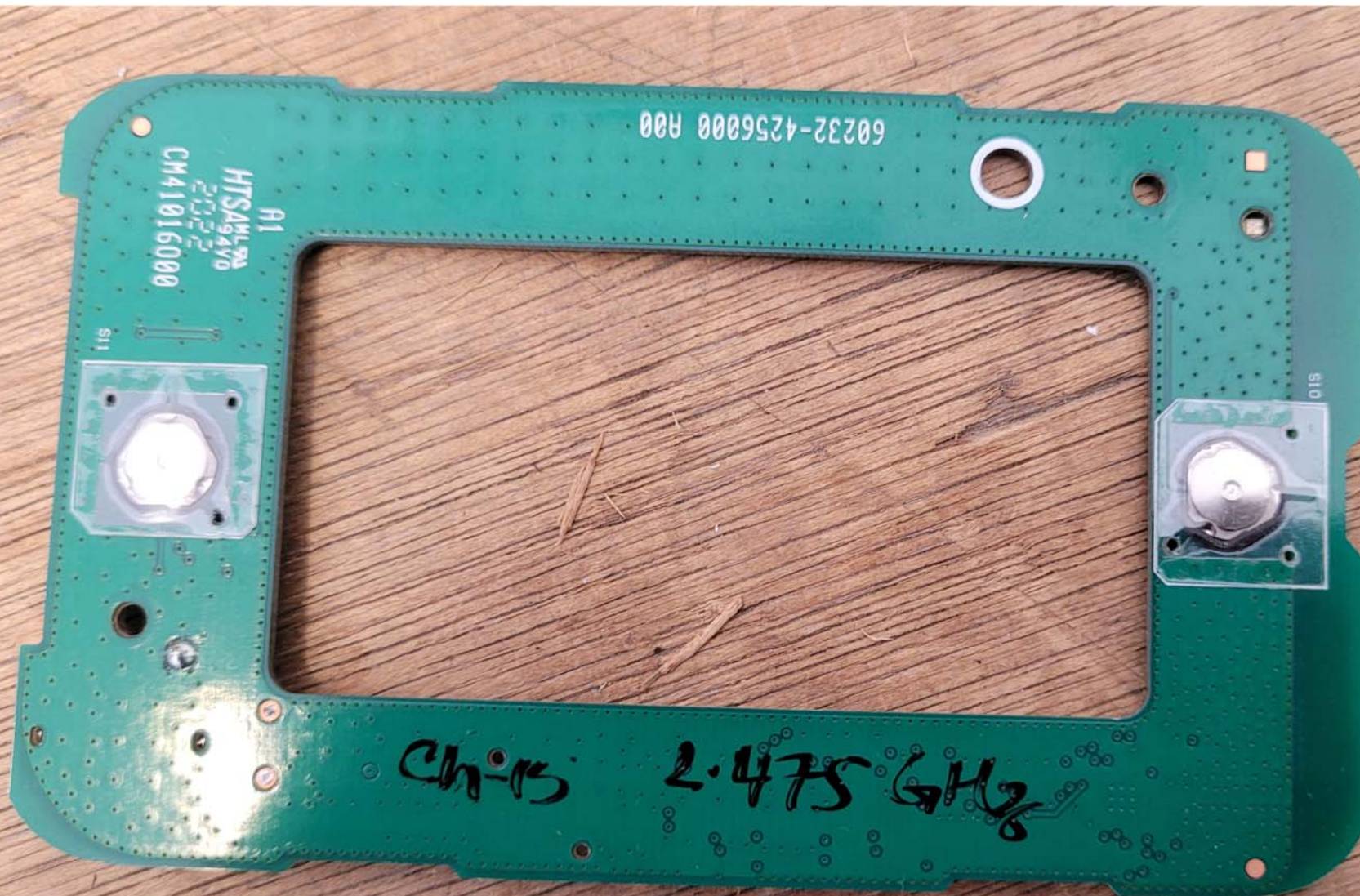
Top View of the PCB - Closeup #2



Top View of the PCB - Closeup #3



Bottom View of the PCB



Bottom View of the PCB - View #2