

1、 Frequency Band

Tx:2400MHz~2480 MHz

Rx:2400 MHz ~2480 MHz

2、 Basic antenna information

Frequency: 2400-2480MHz

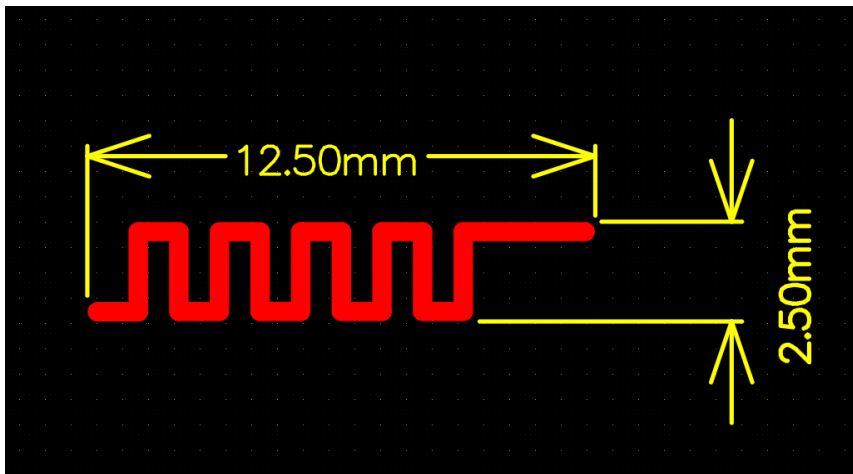
Peak Gain: -6.93dBi

Antenna Type: Snake antenna

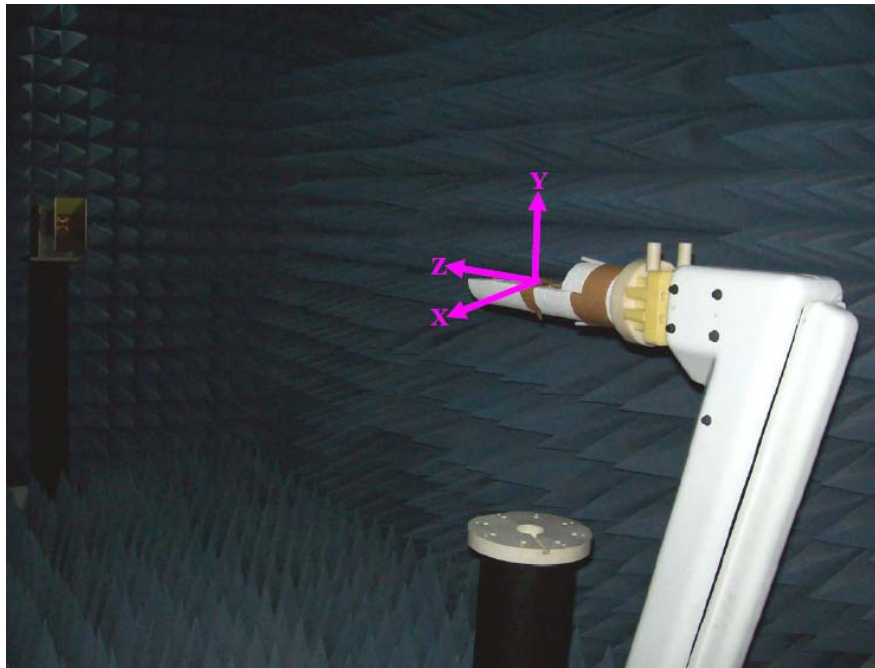
Manufacturer: ZHUHAI JIELI TECHNOLOGY CO.,LTD

Manufacturer address: 333 Kexing Road, Xiangzhou District, Zhuhai City,
Guangdong Province, China

Size : L*W: 12.5mm* 2.5mm

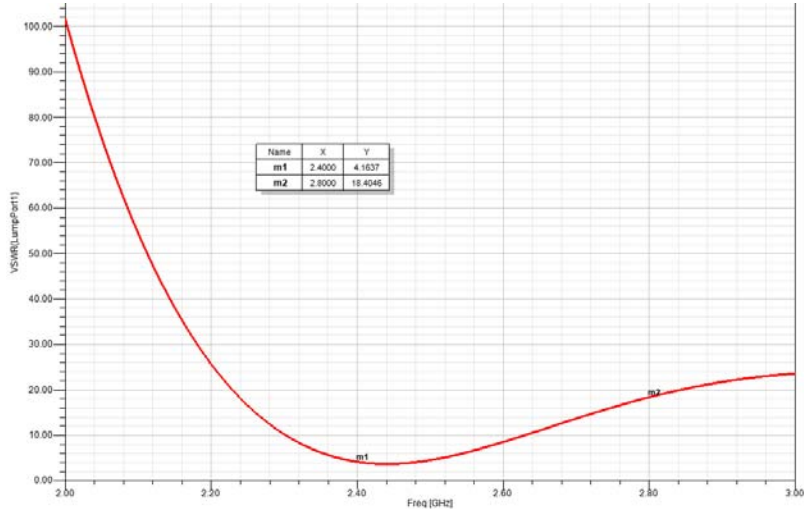


3、 Plane definition



XY-plane	Theta=90°
XZ-plane	Phi=0°
YZ-plane	Phi=90°

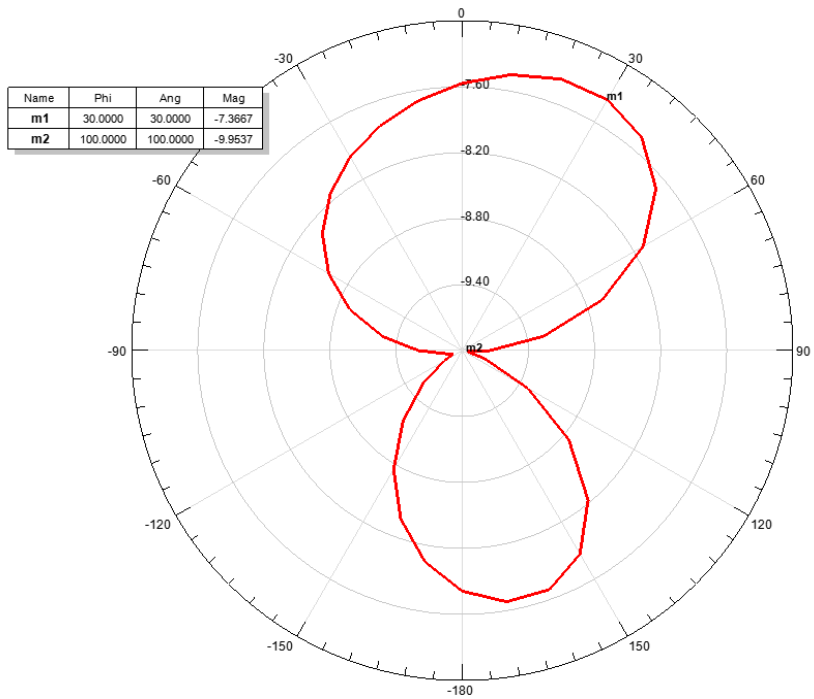
4、VSWR



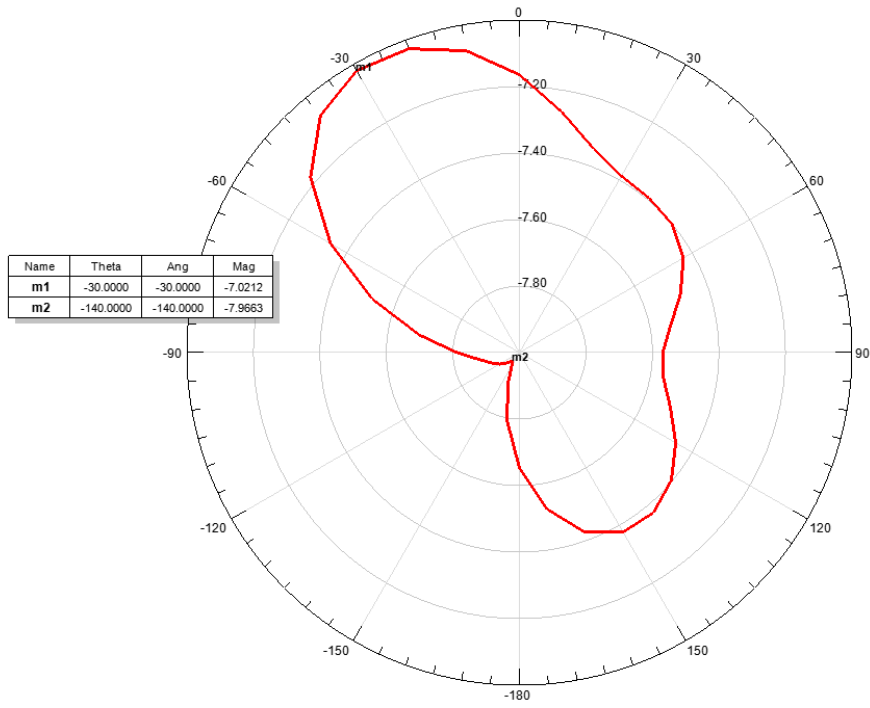
5、Radiation Patterns(GAIN @ 2440MHz)

Plane	XY			XZ			YZ		
Frequency(MHz)	2400	2440	2480	2400	2440	2480	2400	2440	2480
Peak Gain (dBi)	-7.35	-7.36	-7.37	-7.1	-7.02	-7.15	-6.98	-6.93	-7.05

XY-Plane



XZ-Plane



YZ-Plane

