

# Acer Vero Wireless Mouse

## *USER'S GUIDE*

Ver.1.0

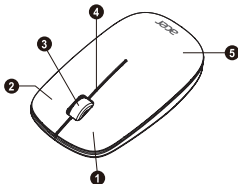


**AMR210**

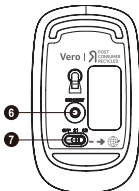


**CAUTION:** To use this product properly, please read the user's guide before installing.

# Functional Introduction



- 1. Left button
- 2. Right button
- 3. Scrolling Wheel
- 4. LED Indicator

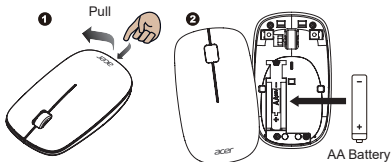


- 5. Battery Cover
- 6. Connect Button
- 7. OFF / BT1 / BT2 Switch

# Battery and Power Management:

**Step 1:** Take the battery cover off.

**Step 2:** Insert the batteries as shown inside the battery compartment.



**Step 3:** Replace the cover.

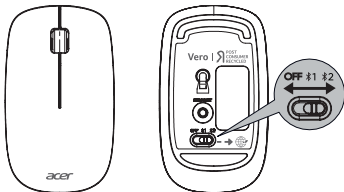
**Step 4:** Slide the switch to **1** or **2**.

**Step 5:** If you need to travel with your wireless mouse, make sure you turn off the POWER SWITCH.

## **\*\*Warning:**

\* Please insert the battery with the correct position according to the instruction labeled on the mouse.

# Switch Connection Channel



- This Mouse can be paired with 2 different devices.
- Slide the switch to **1** and press the connect button then you can connect to the first device.
- Slide the switch to **2** and press the connect button then you can connect to the second device.

# Connect via Bluetooth in windows

1. Turn On your PC, select **Start** [Windows Logo] > **Settings** [Gear Icon] > **Bluetooth & devices** [Bluetooth Icon] > Turn on **Bluetooth** > Add device > Bluetooth.
2. Mouse switch to BT mode and press Connect Button.
3. Find "AMR210BT5.2" and press connect.

## Swift pair

1. Turn on your PC, select **Start** [Windows Logo] > **Settings** [Gear Icon] > **Bluetooth & devices** [Bluetooth Icon] > View more devices > Turn on the **Show notifications to connect using Swift Pair**.



2. Mouse switch to BT mode and press Connect Button.
3. Windows will show a notification "AMR210BT5.2" and Selecting "Connect" starts pairing.



## Connect via Bluetooth in Mac

1. Click on "Apple menu" (top left corner of your screen).
2. Go to System Preferences > Bluetooth > Turn Bluetooth on to set up Bluetooth device and find "AMR210BT5.2" press connect.



# Connect via Bluetooth in Chromebook

1. Click on the [Status Bar] located in the bottom right corner of the screen.



2. Turn Bluetooth on > Pair new devices > Find "AMR210BT5.2" and press to connect.







LED Indicator



## \*Bluetooth Mode

**Red LED is on for 10 sec.**

Power ON



**Red LED Blinking**

Pairing (LED OFF when paired or failed after 10 min)



**Red LED Blinking for 10 sec.**

Low battery Warning



## **Power saving features:**

To conserve the battery power, the mouse offers power management functions as below:

The mouse goes into "Saving Mode" after inactivity. There may be a slight delay while the mouse re-establishes Bluetooth connection from power saving or sleeping mode.

## **Establishing a Bluetooth Connection**

The Bluetooth mouse can work in any Bluetooth environment. Before connecting your Bluetooth mouse with your computer, make sure your computer has a working Bluetooth configuration with Human Interface Device (HID) profile. If your computer does not support Bluetooth, you need to obtain and install a commercially available Bluetooth dongle which converts your computer to a Bluetooth environment.

# Troubleshooting

## **A. Mouse does not work upon installation or is not detected**

Try one or more of the following:

- Make sure the batteries are installed correctly and turn the switch on. Replace a fresh set of batteries if it still does not work.
- Verify that the computer is Bluetooth enabled.
- Press the connection button to reset the Bluetooth connection between your mouse and your computer. Make sure it has been detected by the Operating Systems properly.

## **B. The screen cursor does not move properly**

If your screen cursor lags behind the movement, then your Bluetooth connection may not be able to transmit all of the data from the mouse with the necessary speed. This may be caused by interference from other radio sources, obstructions in the radio wave path, excessive distance from the computer, or a combination of the above.

Try the following actions to improve your Bluetooth connection and optimize your mouse performance:

- Remove any metallic objects from the line of sight between your computer and the Bluetooth mouse.

- If you are using a computer with a built-in Bluetooth antenna, try reorienting the computer until you get a better data rate.
- If you are using a Bluetooth dongle, use a USB extension cable and place the Bluetooth dongle onto your desktop or somewhere in sight of your Bluetooth mouse.
- Move the mouse closer to your Bluetooth dongle.
- Turn off the mouse and turn it on again for better connection.
- Disconnect any Bluetooth audio devices, such as headsets, that may be connected to your computer.

Switch off any other devices operating in the 2.4 GHz radio spectrum, such as Wi-Fi network, mobile telephones, etc., or move their antennas further away from your computer.

# Federal Communication Commission Interference Statement

This equipment has been tested and found to comply with the limits for a Class B digital device, pursuant to Part 15 of the FCC Rules. These limits are designed to provide reasonable protection against harmful interference in a residential installation. This equipment generates, uses and can radiate radio frequency energy and, if not installed and used in accordance with the instructions, may cause harmful interference to radio communications. However, there is no guarantee that interference will not occur in a particular installation. If this equipment does cause harmful interference to radio or television reception, which can be determined by turning the equipment off and on, the user is encouraged to try to correct the interference by one of the following measures:

- Reorient or relocate the receiving antenna.
- Increase the separation between the equipment and receiver.
- Connect the equipment into an outlet on a circuit different from that to which the receiver is connected.
- Consult the dealer or an experienced radio/TV technician for help.

FCC Caution: Any changes or modifications not expressly approved by the party responsible for compliance could void the user's authority to operate this equipment.

This device complies with Part 15 of the FCC Rules. Operation is subject to the following two conditions: (1) This device may not cause harmful interference, and (2) this device must accept any interference received, including interference that may cause undesired operation.

**Radiation Exposure Statement:**

The product comply with the FCC portable RF exposure limit set forth for an uncontrolled environment and are safe for intended operation as described in this manual. The further RF exposure reduction can be achieved if the product can be kept as far as possible from the user body or set the device to lower output power if such function is available.



**CE declaration of conformity**

Hereby, Acer Inc., declares that this Wireless Mouse is in compliance with the essential requirements and other relevant provisions of Radio Equipment Directive 2014/53/EU, and RoHS Directive 2011/65/EU.



## **Abandonment of waste equipment for EU household users**

This symbol on the product or on its packaging indicates that the product must not be disposed of with other household waste. When disposing of used devices, it is your responsibility to bring it to a collection point that recycles used electrical and electronic equipment. The separate collection and recycling of used devices at the time of disposal helps to conserve natural resources and ensures that they are recycled in a manner that protects human health and the environment. For more information about recycling points for used devices, please contact your local city office, household waste disposal service, or the shop where you purchased the product.

## EU Declaration of Conformity

We,

**Acer Incorporated**

8F, 88, Sec. 1, Xintai 5th Rd., Xizhi, New Taipei City 221, Taiwan

And,

**Acer Italy s.r.l.**

Viale delle Industrie 1/A, 20044 Arese (MI), Italy

Tel: +39-02-939-921, Fax: +39-02 9399-2913

[www.acer.it](http://www.acer.it)

**Product:** Acer Vero Wireless Mouse

**Trade Name:** acer

**Model Number:** AMR210

We, Acer Incorporated, hereby declare under our sole responsibility that the product described above is in conformity with the relevant Union harmonization legislation: Radio Equipment Directive 2014/53/EU and RoHS Directive 2011/65/EU. The following harmonized standards and/or other relevant standards have been applied:

EN 55032: 2015+A11:2020, Class B

EN 301 489-17 V3.2.4 (2020-09)

EN 62368-1: 2014+A11: 2017

EN 55035: 2017+A11:2020

EN 300 328 V2.2.2

EN IEC 63000:2018

EN 301 489-1 V2.2.3 (2019-11)

EN 62479:2010

This radio equipment operates with the following frequency bands and maximum radio-frequency power:

Frequency: 2402-2480MHz

Maximum Output Power: 10mW

Year to begin affixing CE marking: 2023.



RU Jan / Sr. Manager  
Acer Incorporated (Taipei, Taiwan)

2023/11/20

Date





Acer America Corporation  
333 West San Carlos St., Suite 1500  
San Jose, CA 95110, U. S. A.  
Tel : 254-298-4000  
Fax : 254-298-4147  
[www.acer.com](http://www.acer.com)



## Federal Communications Commission Declaration of Conformity

This device complies with Part 15 of the FCC Rules. Operation is subject to the following two conditions: (1) this device may not cause harmful interference, and (2) this device must accept any interference received, including interference that may cause undesired operation.

The following local Manufacturer /Importer is responsible for this declaration:

Product:	Acer Vero Wireless Mouse
Model Number:	AMR210
Name of Responsible Party:	Acer America Corporation
Address of Responsible Party:	333 West San Carlos St. Suite 1500 San Jose, CA 95110 U. S. A.
Contact Person:	Acer Representative
Phone No.:	254-298-4000
Fax No.:	254-298-4147