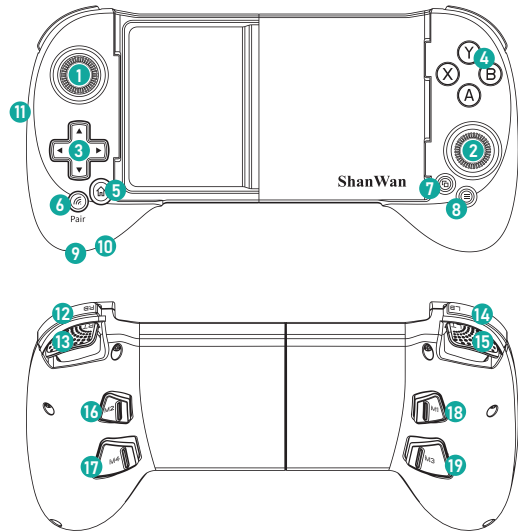


功能示意图



- ① 左摇杆/L3 键
- ② 右摇杆/R3 键
- ③ 方向键
- ④ X/Y/A/B 键
- ⑤ Ⓜ键/开机回连
- ⑥ Pair 键/开机配对
- ⑦ View 键
- ⑧ Menu 键
- ⑨ Type-C 充电口
- ⑩ 复位孔
- ⑪ 拨动开关: 模式切换
- ⑫ ⑬ RB/RT 键
- ⑭ ⑮ LB/LT 键
- ⑯ ⑰ M2/M4 键
- ⑱ ⑲ M1/M3 键

XBOX(X-Input) for Android/iOS

作用: 玩模拟器、原生手柄游戏、XBOX 串流等。
(安卓 9.0 / iOS13.0 及以上)

蓝牙连接

1. 拨动开关: 拨到 **X** 档为 X-Input 模式。
2. 首次使用 (开机配对):
 - a) 按 Pair 配对键开机配对, LED 快闪。
 - b) 到系统蓝牙设备内, 搜索蓝牙名为 **ShanWan Q13 for X** 的设备进行配对连接。
 - c) 连接成功 LED 蓝色常亮。
3. 再次使用 (开机回连):
 - a) 按 Ⓜ键开机回连, LED 蓝色慢闪。
 - b) 回连成功LED 蓝色常亮。
4. 按 Pair 键关机。

PS Remote Play 串流 / iOS MFi

作用: 玩 PS 串流、苹果 MFi 手柄游戏等。

蓝牙连接

1. 拨动开关: 拨到 **P** 档为 P4 MFi 模式。
2. 首次使用 (开机配对):
 - a) 按 Pair 配对键开机配对, LED 快闪。
 - b) 安卓系统蓝牙设置内, 搜索蓝牙名为 **Android Gamepad** 的设备进行配对连接;
iOS 系统蓝牙设置内, 搜索蓝牙名为 **DUALSHOCK 4 Wireless Controller** 的设备进行配对连接。
 - c) 连接成功 LED 红色常亮。
3. 再次使用 (开机回连):
 - a) 按 Ⓜ键开机回连, LED 红色慢闪。
 - b) 回连成功 LED 红色常亮。
4. 按 Pair 键关机。

ShootingPlus for Android

作用: ShootingPlus App 映射玩安卓触屏类游戏。

蓝牙连接

1. 拨动开关: 拨到 **V** 档为 ShootingPlus 模式。
(ShootingPlus App 可以到各手机应用市场下载安装)
2. 首次使用 (开机配对):
 - a) 按 Pair 配对键开机配对, LED 快闪。
 - b) 到系统蓝牙设备内, 搜索蓝牙名为 **ShanWan Q13XPV** 的设备进行配对连接。
 - c) 连接成功 LED 绿色常亮。
3. 再次使用 (开机回连):
 - a) 按 Ⓜ键开机回连, LED 绿色慢闪。
 - b) 回连成功LED 绿色常亮。
4. 按 Pair 键关机。

M1-M4 Button Function

按键 **A/B/X/Y/LB/LT/RB/RT/L3/R3** 都可以被映射到 **M1/M2/M3/M4** 键上。

如要把 **A** 键到 **M1** 键上, 映射方法:

1. 同时按映射 **M1** 键 + Ⓜ键, LED 闪烁;
2. 再按下 **A** 键, LED 停止闪烁恢复到原来的状态。
(如果1分钟内没有按下 **A/B/X/Y/LB/LT/RB/RT/L3/R3**, 则会自动退出)

取消在 **M1** 键上的映射:
同时按映射 **M1** 键 + Ⓜ键, 再按下 **M1** 键。

出厂默认 **M1** 为 **LB**, **M2** 为 **RB**, **M3** 为 **LT**, **M4** 为 **RT**。

OTA 固件升级

关机状态, 在 **X** 或 **P** 档, 按 **LB + X + Ⓜ** 键连接安卓或苹果手机 GamepadSpace-Q133 蓝牙设备。
手机应用市场下载安装GamepadSpace app进行固件升级。

电性参数

工作电压: DC3.7V
工作电流: <60mA
持续使用时间: >8H
休眠电流: <5uA
充电电压/电流: DC5V/500mA
蓝牙传输距离: ≤8M
电池容量: 600mAh
待机时间: 满电放置60天

手柄充电/休眠/唤醒功能

1. 手柄在充电时, LED 指示灯慢闪, 充电后常亮。
2. 睡眠/唤醒功能:
 - 配对状态:** 2分钟内没有配对成功会进入休眠。
 - 回来状态:** 1分钟内没有回连成功会进入休眠。
 - 已连接蓝牙:** 15分钟内不使用会进入休眠。按 Pair 配对键关机。
按 Ⓜ键直接回连。
3. 电池电量不足时, LED 指示灯快闪提示。

摇杆设置

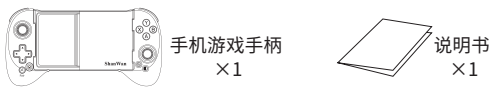
摇杆与扳机键校准:

1. 开机状态, 按 **A** 键 + Ⓜ键 + Ⓜ键进入校准状态;
2. 顺时针逆时针大幅度转几圈摇杆; 按几次扳机键, 并按到底;
3. 再次按 **A** 键 + Ⓜ键 + Ⓜ键退出校准状态。

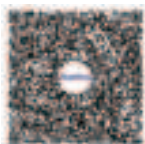
摇杆画方圆/死区切换:

1. 摇杆方圆切换 (默认为画圆): **R3** 键 + Ⓜ键。
 2. 摇杆死区切换 (默认为无死区): **L3** 键 + Ⓜ键。
- 注: L3为左摇杆下压键, R3为右摇杆下压键。

产品清单



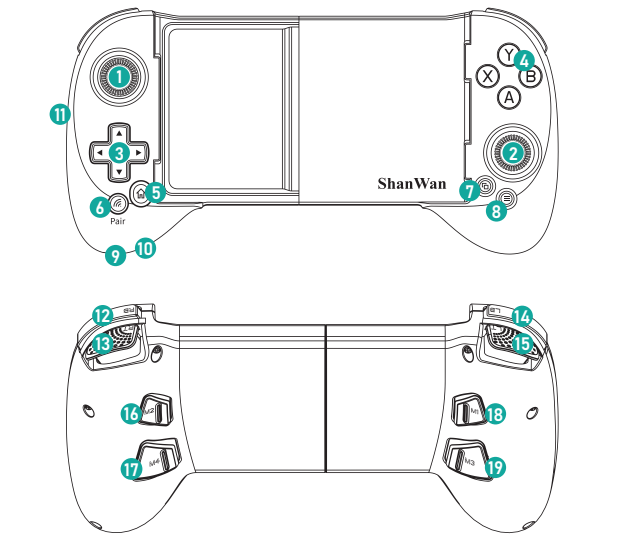
Q133XPV 使用教程



QQ售后群
942871046



Functional diagram



- 1

Left Joystick/L3 Button
- 2

Right Joystick/R3 Button
- 3

Direction Button
- 4

X/Y/A/B Button
- 5

Button/Reconnection
- 6

Pair Button/Power-on pairing
- 7

View Button
- 8

Menu Button
- 9

Type-C charging port
- 10

Reset hole
- 11

Toggle switch: Mode switch
- 12 13

RB/RT Button
- 14 15

LB/LT Button
- 16 17

M2/M4 Button
- 18 19

M1/M3 Button

XBOX(X-Input) for Android/iOS

Use: Play emulators, native gamepad games, XBOX streaming and more.
(Android 9.0 / iOS13.0 and above)

Bluetooth connection

1. Flip the switch: Switch to **X** to enter the X-INPUT mode.
2. First use (Power-on pairing):

a) Press the Pair button for pairing, and the LED blinks quickly.

b) Turn on your device's Bluetooth search and connect the Bluetooth device **ShanWan Q13 for X**.

c) If the connection is successful, the LED is steady blue.
3. Use again (Reconnection):

a) Press to power on and the LED will blink blue slowly.

b) The LED is always blue when reconnection is successful.
4. Press the Pair button to power off the device.

PS Remote Play Streaming / iOS MFi

Use: Play PS streaming, Apple MFi gamepad games, etc.

Bluetooth connection

1. Flip the switch: Switch to **P** to P4 MFi mode.
2. First use (Power-on pairing):

a) Press the Pair button for pairing, and the LED blinks quickly.

b) In Android system, search for a device named **Android Gamepad** to pair and connect;

In iOS system, search for a device named **DUALSHOCK 4 Wireless Controller** to pair and connect.

c) If the connection is successful, the LED is steady red.
3. Use again (Reconnection):

a) Press to power on and the LED will blink red slowly.

b) The LED is always red when reconnection is successful.
4. Press the Pair button to power off the device.

ShootingPlus for Android

Use: ShootingPlus App maps to play Android touch screen games.

Bluetooth connection

1. Flip the switch: Switch to **V** for ShootingPlus mode.
(ShootingPlus App can be downloaded and installed in various mobile app markets.)
2. First use (Power-on pairing):

a) Press the Pair button for pairing, and the LED blinks quickly.

b) Turn on your device's Bluetooth search and connect the Bluetooth device **ShanWan Q13XPV**.

c) If the connection is successful, the LED is steady green.
3. Use again (Reconnection):

a) Press to power on and the LED will blink green slowly.

b) The LED is always green when reconnection is successful.
4. Press the Pair button to power off the device.

M1-M4 Button Function

Button **A/B/X/Y/LB/LT/RB/RT/L3/R3** can be mapped to the **M1/M2/M3/M4**.

A maps to **M1**:

1. Press the mapping **M1** + at the same time, and the LED blinks;
2. Press **A** again, the LED will stop blinking and return to the original state.
(If you don't press **A/B/X/Y/LB/LT/RB/RT/L3/R3** within 1 minute, it will automatically exit.)

Cancel mapping on the **M1**:

Press the Mapping **M1** + at the same time, and then press **M1**.

By default, **M1** is **LB**, **M2** is **RB**, **M3** is **LT**, and **M4** is **RT**.

OTA Firmware Upgrade

In the off state, in the X or P mode, press **LB + X +** to connect to the GamepadSpace-Q133 Bluetooth device of Android or Apple phone.

Mobile app Market Download and install the GamepadSpace app for firmware upgrade.

Electrical parameters

Working voltage	DC3.7V
Working current	< 60mA
Continuous use time	> 8H
Sleep current	< 5uA
Charging voltage/current	DC5V/500mA
Bluetooth transmission distance	≤ 8M
Battery capacity	600mAh
Standby time	60days (fully charged)

Charging / sleep / wake-up

When charging, the LED will blink slowly; When the battery is full, the LED will keep bright.

Sleep / Wake-up function:

In pairing state: the controller will sleep if it's not paired successfully within 2 minutes.

Connect back state: The controller will sleep if it is not connect back within 1 minutes.

Bluetooth is connected state: The controller will sleep if the controller is not used within 15 minutes.

Wake-up function:

Press the to connect back when you need to wake-up it.

Joystick setting

Joystick and trigger button calibration:

1. In power-on state, press **A** + + to enter calibration state;
2. Turn the joystick clockwise and counterclockwise for a few large circles; press the trigger button several times and press it to the bottom
3. Press **A** + + again to exit calibration state.

Joystick drawing square or circle/dead zone switch

1. Joystick square circle switching (default is circle drawing): **R3** + .
2. Joystick dead zone switching (default is no dead zone): **L3** + .

Note: L3 is the left joystick push button, R3 is the right joystick push button.

Product list



FOC Caution:

This device complies with part 15 of the FCC Rules. Operation is subject to the following two conditions: (1) This device may not cause harmful interference, and (2) this device must accept any interference received, including interference that may cause undesired operation.

Any changes or modifications not expressly approved by the party responsible for compliance could void the user's authority to operate the equipment.

NOTE: This equipment has been tested and found to comply with the limits for a Class B digital device, pursuant to Part 15 of the FCC Rules. These limits are designed to provide reasonable protection against harmful interference in a residential installation. This equipment generates, uses and can radiate radio frequency energy and, if not installed and used in accordance with the instructions, may cause harmful interference to radio communications. However, there is no guarantee that interference will not occur in a particular installation.

If this equipment does cause harmful interference to radio or television reception,

which can be determined by turning the equipment off and on, the user is encouraged to try to correct the interference by one or more of the following measures:

- Reorient or relocate the receiving antenna.
- Increase the separation between the equipment and receiver.
- Connect the equipment into an outlet on a circuit different from that to which the receiver is connected.
- Consult the dealer or an experienced radio/TV technician for help.

The device has been evaluated to meet general RF exposure requirement. The device can be used in portable exposure condition without restriction.