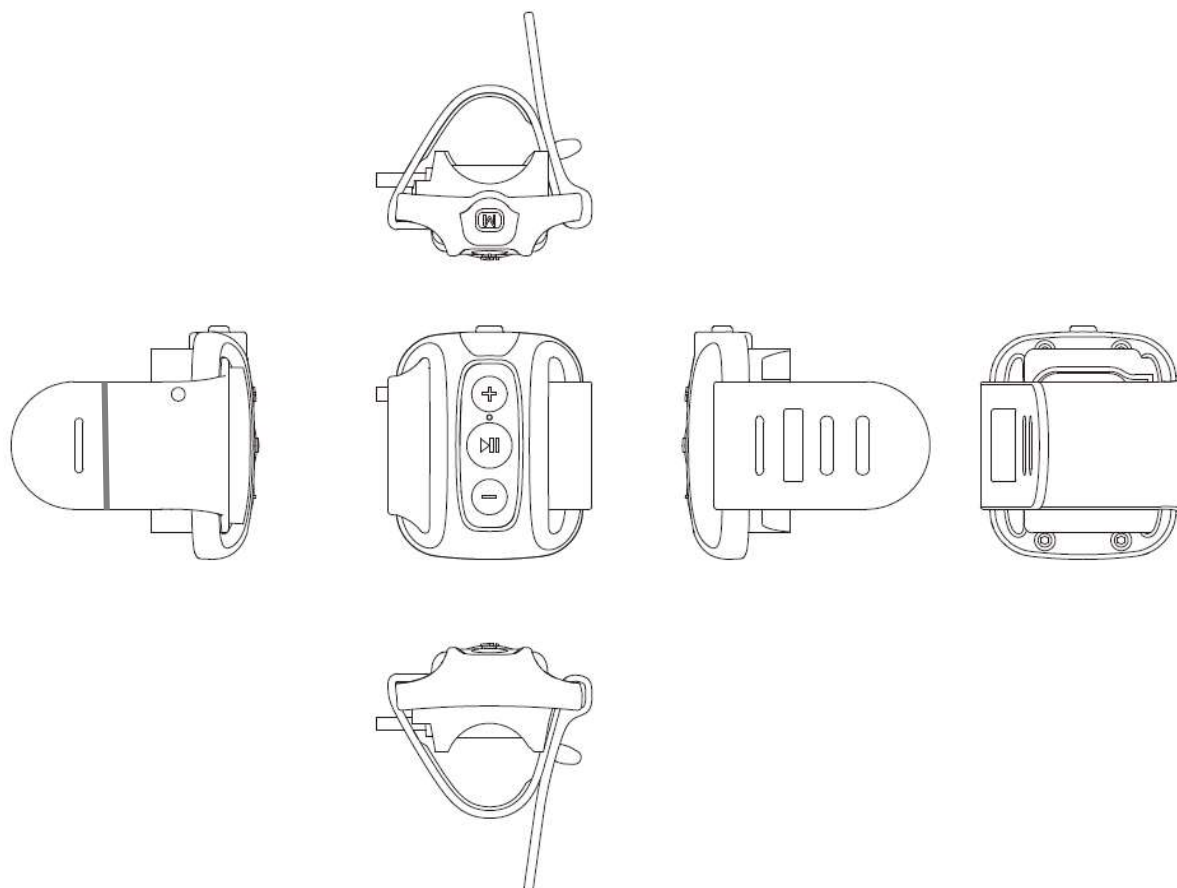


User Manual

(Draft-02)

BM190BVC Bluetooth Remote Control Set



Special Features

- Wireless connection Bluetooth Remote Control to control the specified function on your Android and iOS phones.
- Assembly with silicone rubber mounting kit for mount and use the device on bike handle.
- IPX5 water resistant designed that it can be used in the rain and for intense workouts

Cautions

- Do not place naked flames, such as lighted candles on or near the product.
- Do not use or store this product in a place where it is subject to direct sunlight, heat, excessive dust or vibration.
- Do not clean this product with other liquids.
- Do not push foreign objects into the slots or holes in the product.
- Do not attempt to open this product yourself. There are no user serviceable parts inside.
- Do not allow children access to plastic bags.

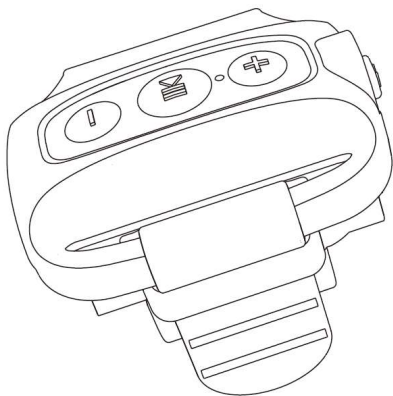
Safety Warnings

- Before using this product, read and follow all warnings and instructions.
- This product is not intended for use by young children. Young children should be properly supervised.
- This product is intended for household use only and not for commercial or industrial use.
- No naked flame sources, such as lighted candles, should be placed on the product.
- Ventilation should not be impeded by covering ventilation openings with items such as newspapers, table cloths, curtains and the like.
- Make sure the unit is adjusted to a stable position. Damage caused by using this product in an unstable position or by failure to follow any other warning or precaution contained within this user manual will not be covered by warranty.

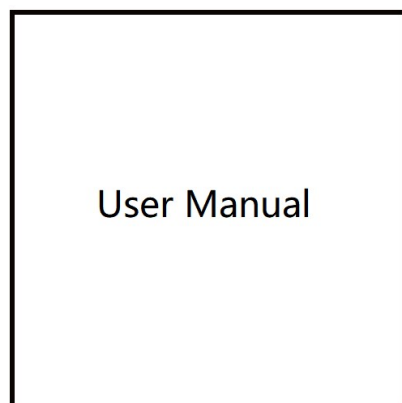
We, suggest retaining the packaging in case for future transport of the product.

If at any time in the future, you should need to dispose of this product please note that: All batteries and accumulators need to be removed from this product (Removal of Waste Batteries and Accumulators).

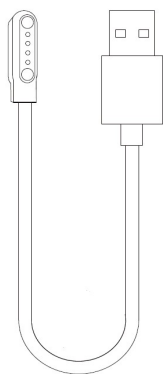
1. What's in the box



Bluetooth Remote Control Set



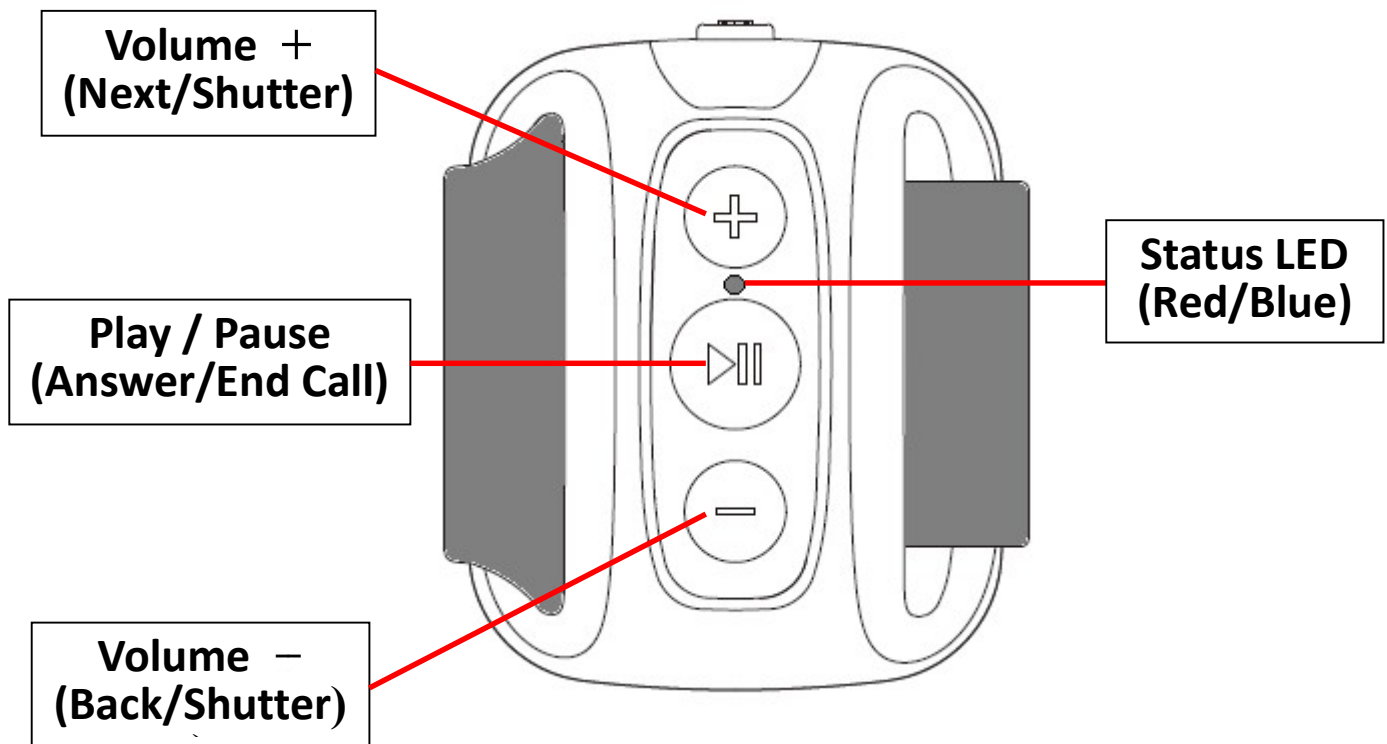
User Manual



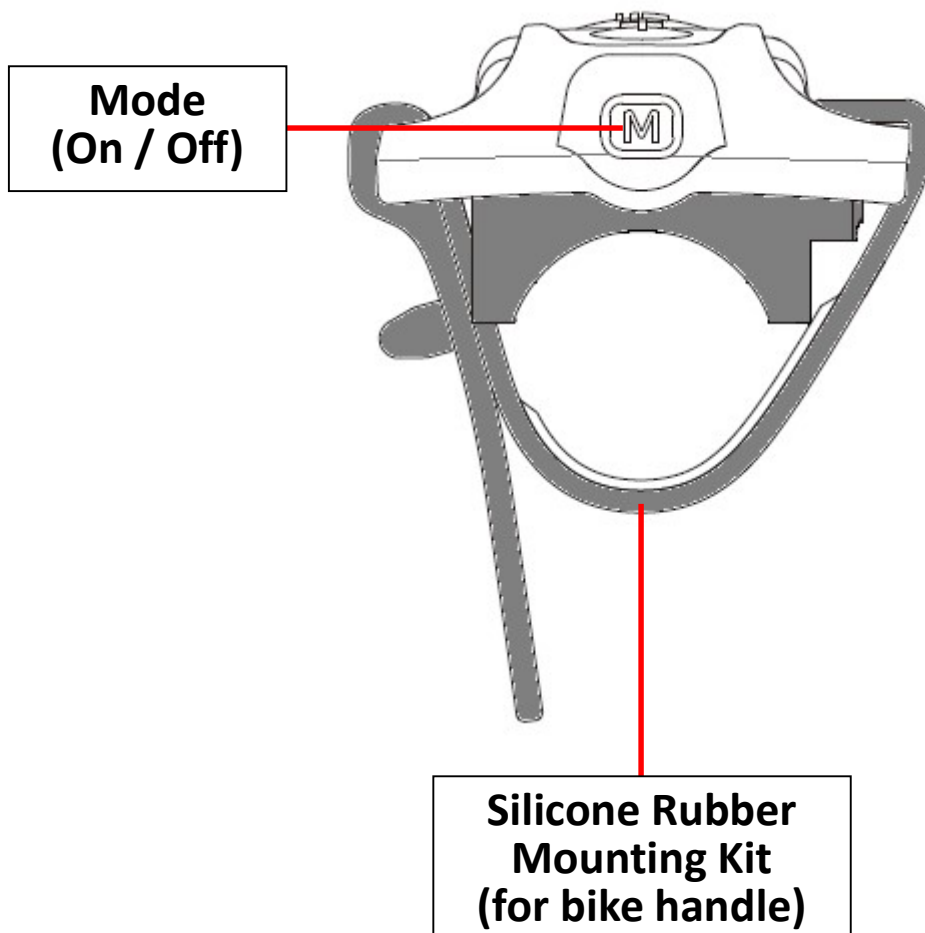
USB Charging Cable
Magnetic Terminals Plug

2. Device's buttons overview

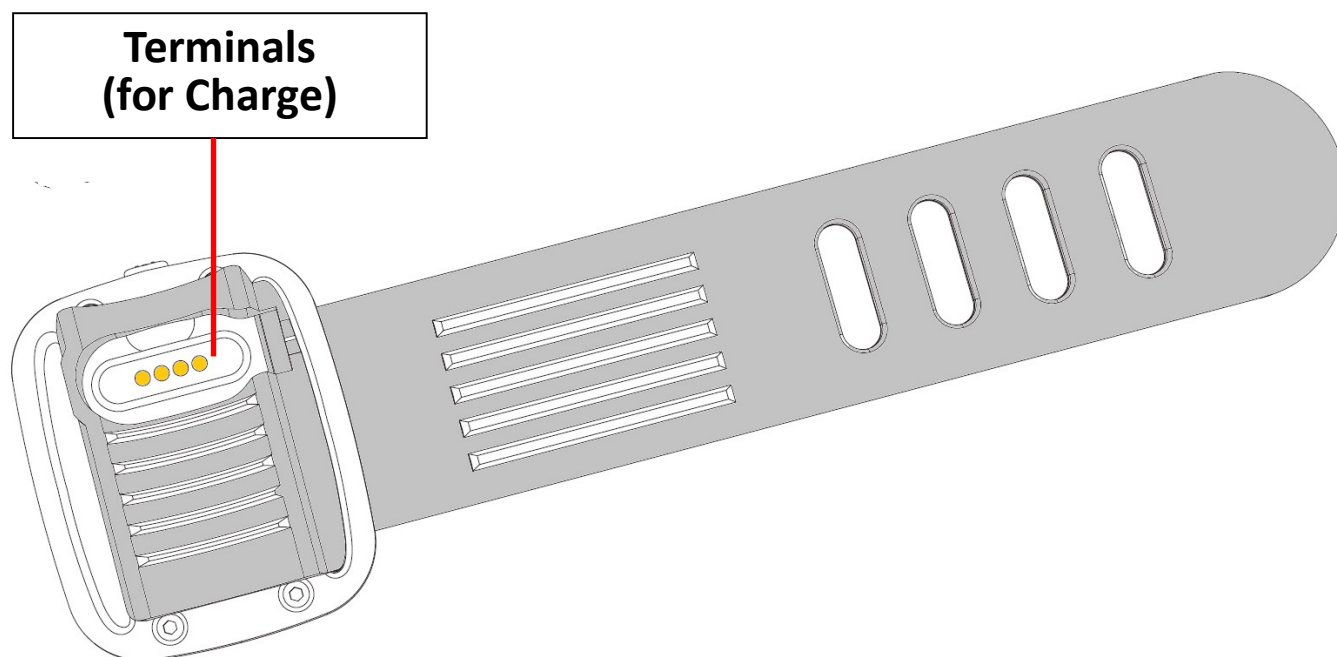
Top View



Side View



Bottom View



3. Status LED indication quick view

Mode	LED Status	Function
Charge Mode	Red light On:	In Charging
	Red light Off:	Fully Charged
Bluetooth Mode	Blue rapid flash(0.5s):	Attempting to reconnect (for 5 seconds)
		Bluetooth pairing
		Bluetooth disconnected (and for new pairing)
	Blue rapid flash to Off:	Bluetooth connected
Operating Mode	Blue rapid flash once:	Key pressed
	Blue Light Off:	No key activity be made
Low Battery	Blue flash (1s):	Battery is in low energy level

4. Button's function quick view

Button Activity		Function
M	Long press (2 - 3s):	Power On / Power Off
	Short press twice:	Bluetooth Disconnect for new pairing
▶	Short press:	Play / Pause
		Answer/End Call
	Long press and release:	Play / Pause
+	Short press:	Volume up
		Camera shutter (When using camera function)
	Long press (2 - 3s):	Go to next track
—	Short press:	Volume down
		Camera shutter (When using camera function)
	Long press (2 - 3s):	Back to previous track

5. About device's battery

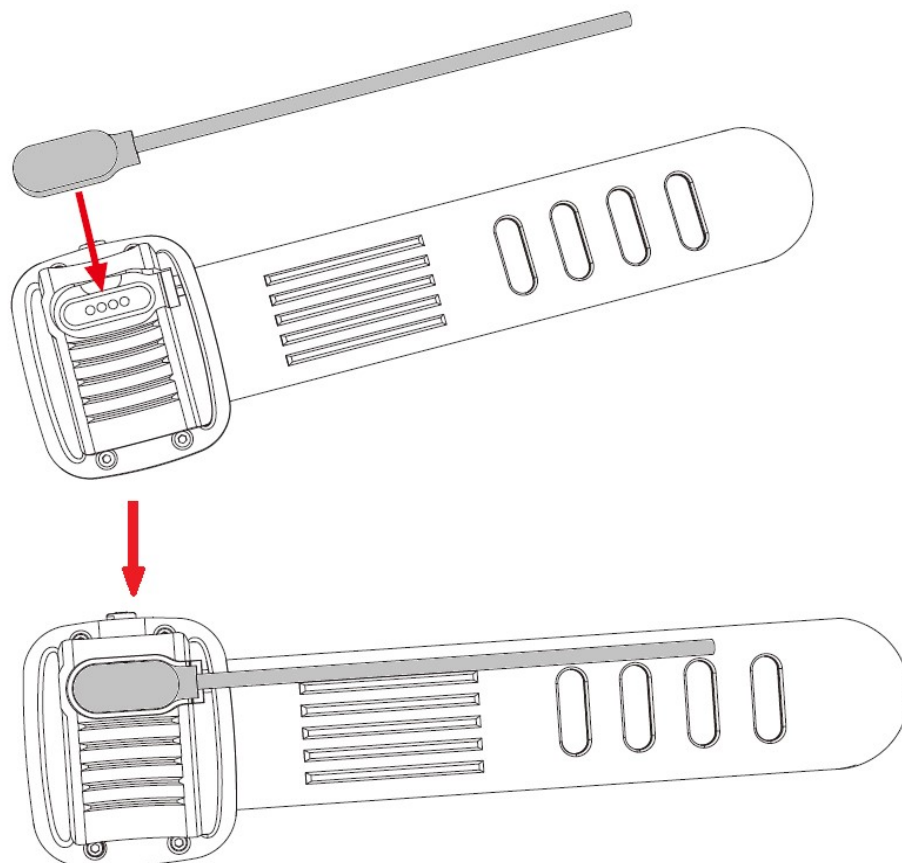
- The device has an internal non–user-replaceable rechargeable lithium battery.
- For the first time use the device, let it charging for about 1.5 ~ 2 hours or until the [**Status LED**] indicator light from solid red turned to light off.
- The lithium battery of electronic devices is sensitive to long periods of inactivity. It is important to recharge it at least once a month to keep it functioning properly.

6. Terminals for charge

Important: The device is equipped with terminals which let you connect for charge. To avoid performance matter, make sure the device's terminals and terminals plug of USB cable are completely dry and without dirty before to use for connection.

To charge:

- Use the Magnetic Terminals Plugs of the provided USB Charging Cable attach onto the device's Terminals. And make sure that the magnetic terminal plug and terminals are proper placed. Please see illustrated for reference in below:



- Then, connect the Type-A plug of the USB Charging Cable to a USB port of your computer or USB Power Adapter.
- The **[Status LED]** indicator will light solid red when the device is in charging.
- The **[Status LED]** indicator will light off from solid red when fully charged.
- Disconnect the USB Charging Cable from device and Computer/Adapter once battery fully charged.

7. ON / OFF

Power ON the device

Note: *The device will be automatically power Off in 8 minutes if no Bluetooth connection be made.*

- Long press the **[M]** button, for 2 - 3 seconds, until the **[Status LED]** indicator light on and rapid flash blue.
- The device is in pairing mode and waiting for pair.

Power OFF the device

- In operating mode, Long press the **[M]** button, for 2 - 3 seconds, until the **[Status LED]** indicator from off to light flash once blue and then light blue once to off.
- The device is turned to Off.

8. Bluetooth Pairing

Note: For some Bluetooth mobile devices, you may need to input “0000” as pairing password.

- Power ON the device by long press the [**M**] button, for 2 - 3 seconds, until the [**Status LED**] indicator light on and rapid flash blue.
- Open your mobile device's Bluetooth settings and select “**BM190B**” in it list for pairing;
- The device’s [**Status LED**] indicator light will switch from rapid flash blue to Off. The device is in Bluetooth connected.
- Now, the device is ready for Bluetooth remote control function.

9. Disconnect from paired device

- In Bluetooth connected mode, press twice the [**M**] button to switch the device to new “Pairing” mode from Bluetooth connected mode.
- The [**Status LED**] indicator light switch from Off to rapid flash blue.
- The current connected mobile device is disconnected. And now, you can process for new mobile device for pairing as you wanted.

10. Auto re-connects with paired device

- Every time you power ON the device; the Bluetooth mode will firstly be searching and pairing for the last paired mobile device whether it is available. The device will re-connect this mobile device(s) as priority.
- If it is not found in some seconds, the device will then switch to pairing mode internally and wait for pair.
- The [**Status LED**] indicator light will switches according to the modes status.

11. Bluetooth remote control functions

Play/Pause

- Short press the [**▶||**] button to starts play.
- To pause the playing function, short press the [**▶||**] button. Press it again to resume.

Note: Depending on settings in some Android system phone(s), you may need to open the audio player App on mobile device before you can use this play/pause on this device.

Volume adjust

- Short press or pressing either the [**Volume +**] or [**Volume -**] button to control the volume Up / Down.

Play for next / previous track

- While track is playing, long press either the [**Volume +**] or [**Volume -**] buttons until the next or previous track is selected to playback.

Answer Call / End Call

- When there have an incoming call on your mobile device;
- You can accept the call by short press the [►] button on this device.
- After the call has finished, also can end call by short press the [►] button again.

Camera shutter

- When opening and using the camera function on your mobile device, short press either the [**Volume +**] or [**Volume -**] button can take photos remotely.
- Repeatedly short press either the [**Volume +**] or [**Volume -**] button can continually takings photos as you want.

Note: *The volume up/down control function will be disabled when mobile device's camera function in using.*

12. Low battery and auto power Off

- In the device detected the battery is in lower level, the [**Status LED**] indicator will flash blue by every 1 second.
- When you saw this lights reminder, please connect the device to the Computer/USB power adaptor for charging.
- If not, the device will itself power OFF automatically when the battery is keeping low energy level after some time.

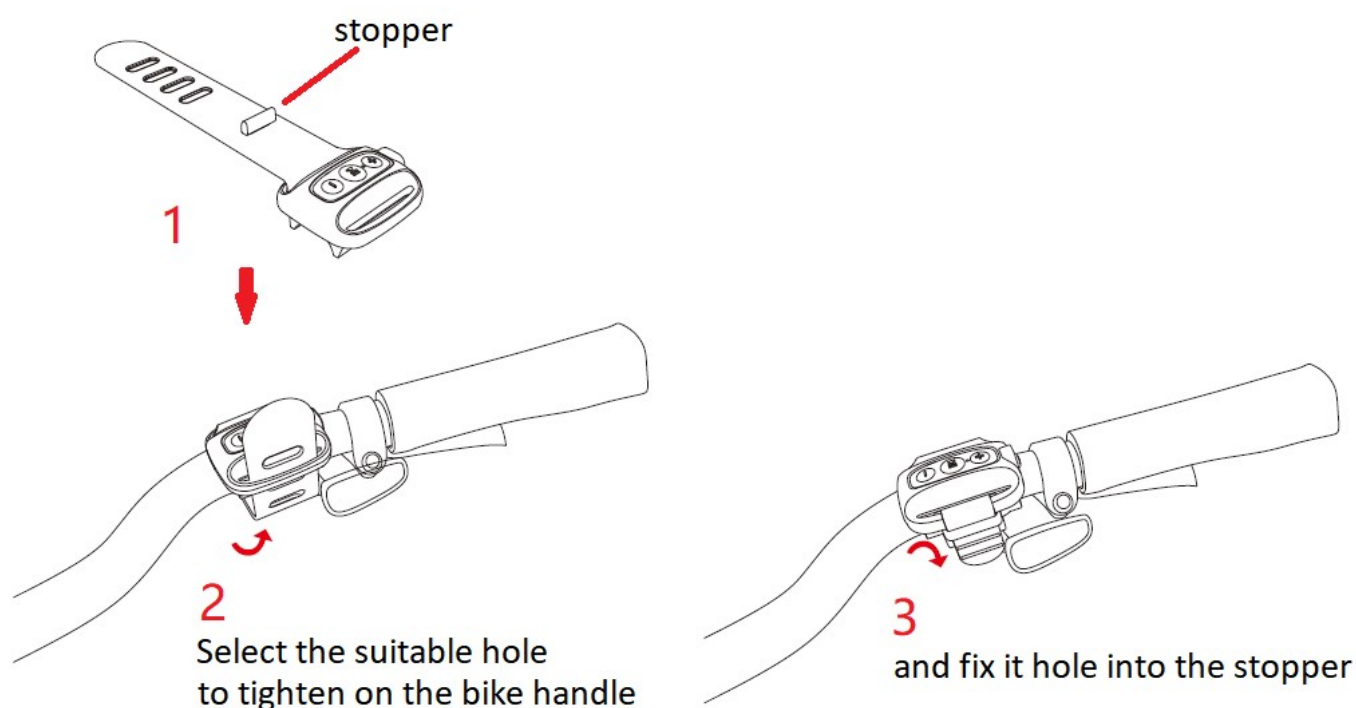
Note: *In some low battery levels case, the device might not be turned the power On. If this happened, please recharging the battery at least 10 ~ 15 minutes, because the rechargeable battery has not enough energy for drive up the device.*

13. Reset the Device

- In some circumstances, the device's function may hang and need to reset. To reset the device;
- Long press the [►] button for 8 ~ 10 seconds, the device should reset and turn OFF automatically. After that, power ON the device for restart.

14. Install Device to your Bike

- Recommended mount the device to the suggested location (left or right position) on your bike handle.
- You can mount the device's silicone rubber mounting kit to your bike handle as the following steps. Please see illustrated for reference in below:



15. For IPX5 Water Resistant

- The device can resist low pressures jets of water, such as rain and sweats.
- The device cannot be placed in water and high temperature or humidity, etc...
- The charging pole-piece in the device is with anti-corrosion treatment. Whatever, you are recommended to clean and dry the device immediately when it is used after rain or device has water.

16. Cleaning after used in rain or workouts

- If perspiration or dirt gets on device, cleanup it off with soft cloth at room temperature and then leave them in a well-ventilated shady place to dry.
- Do not clean the device with detergent, chemicals, or wet wipes.
- Do not dry the device using hot air from a hair dryer. Doing so may cause deformation and deterioration of the water-resistant performance.
- Do not use the device until it's dry completely. Put a dry cloth under the device and leave them at room temperature for about 2 or 3 hours.

17. Specification

Dimension	Main Unit:	51 x 42 x 14.5mm (approx.)
	Mounting Kit:	160 x 40 x 17mm (approx.)
Weight	Main Unit:	16g (approx.)
	Mounting Kit:	16g (approx.)
Built-In Battery	Lithium 3.7V, 115mAh	
	Charging Time: 2 hours	
	Standby Time: 25 days	
Terminals Connection	For Power: DC Input, 5V 500mA / 0.5A	
	For Charge	
Bluetooth	Specification	V5.0
	Frequency Range	2.402GHz ~ 2.480GHz
	Supported Profile	BLE
	Connection Distance	Up to 10m (open area)
	TX Power	+ 8dBm (max.)
Remote Control	Android Phones	Play/Pause, Up / Down Volumes, Back/Next Track, Answer/End Call Camera Shutter
	Apple Phones	
Water Resistant	IPX5	
Operating Temperature	0 to 40°C	

18. Troubleshooting

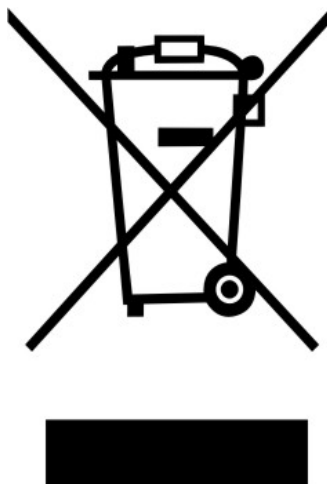
Cannot power On	<ul style="list-style-type: none"> Check whether device's battery have enough energy.
Cannot charge	<ul style="list-style-type: none"> Check whether device's terminals and terminals plug are connected properly.
Keys no controls	<ul style="list-style-type: none"> Check whether the device's Bluetooth is connected properly with your mobile device.

19. Disclaimer

Updates to Firmware and/or hardware components are made regularly. Therefore, some of the instruction, specifications and pictures in this documentation may differ slightly from your particular situation. All items described in this guide for illustration purposes only and may not apply to particular situation. No legal right or entitlements may be obtained from the description made in this manual.

20. CE Declaration of Conformity

(To be discussed and confirmed)



21. FCC statement

FCC Caution: Any changes or modifications not expressly approved by the party responsible for compliance could void the user's authority to operate this equipment.

This device complies with Part 15 of the FCC Rules. Operation is subject to the following two conditions:

- (1) This device may not cause harmful interference, and
- (2) this device must accept any interference received, including interference that may cause undesired operation.

This device and its antenna(s) must not be co-located or operating in conjunction with any other antenna or transmitter

NOTE:

This equipment has been tested and found to comply with the limits for a Class B digital device, pursuant to Part 15 of the FCC Rules.

These limits are designed to provide reasonable protection against harmful interference in a residential installation. This equipment generates, uses and can radiate radio frequency energy and, if not installed and used in accordance with the instructions, may cause harmful interference to radio communications.

However, there is no guarantee that interference will not occur in a particular installation.

If this equipment does cause harmful interference to radio or television reception, which can be determined by turning the equipment off and on, the user is encouraged to try to correct the interference by one or more of the following measures:

- Reorient or relocate the receiving antenna.
- Increase the separation between the equipment and receiver.
- Connect the equipment into an outlet on a circuit different from that to which the receiver is connected.
- Consult the dealer or an experienced radio/TV technician for help.

The device has been evaluated to meet general RF exposure requirements.

The device can be used in portable exposure conditions without restriction.

FCC ID: 2A7DR-BM190BVC