

Photo 6. Transmitter, Receiver Board, Component Side

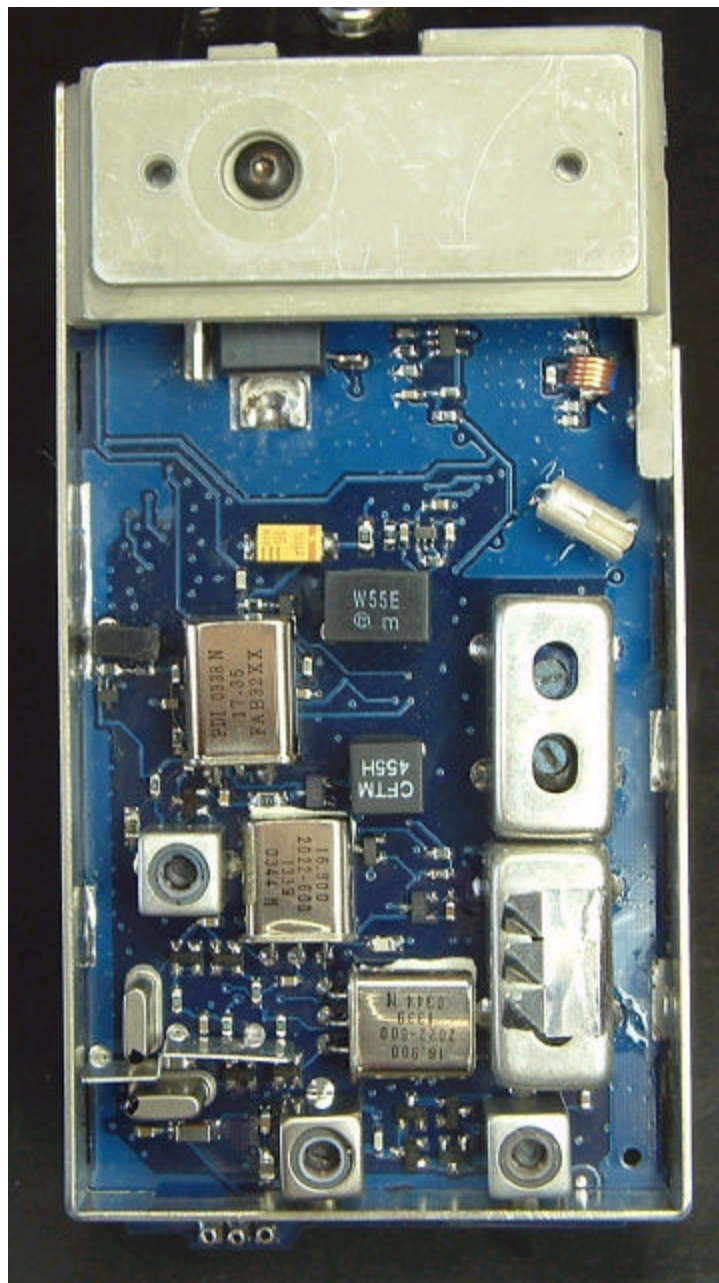


Photo 7. Main Board, Component Side





Photo 8.            Alphanumeric Display Board, Top View

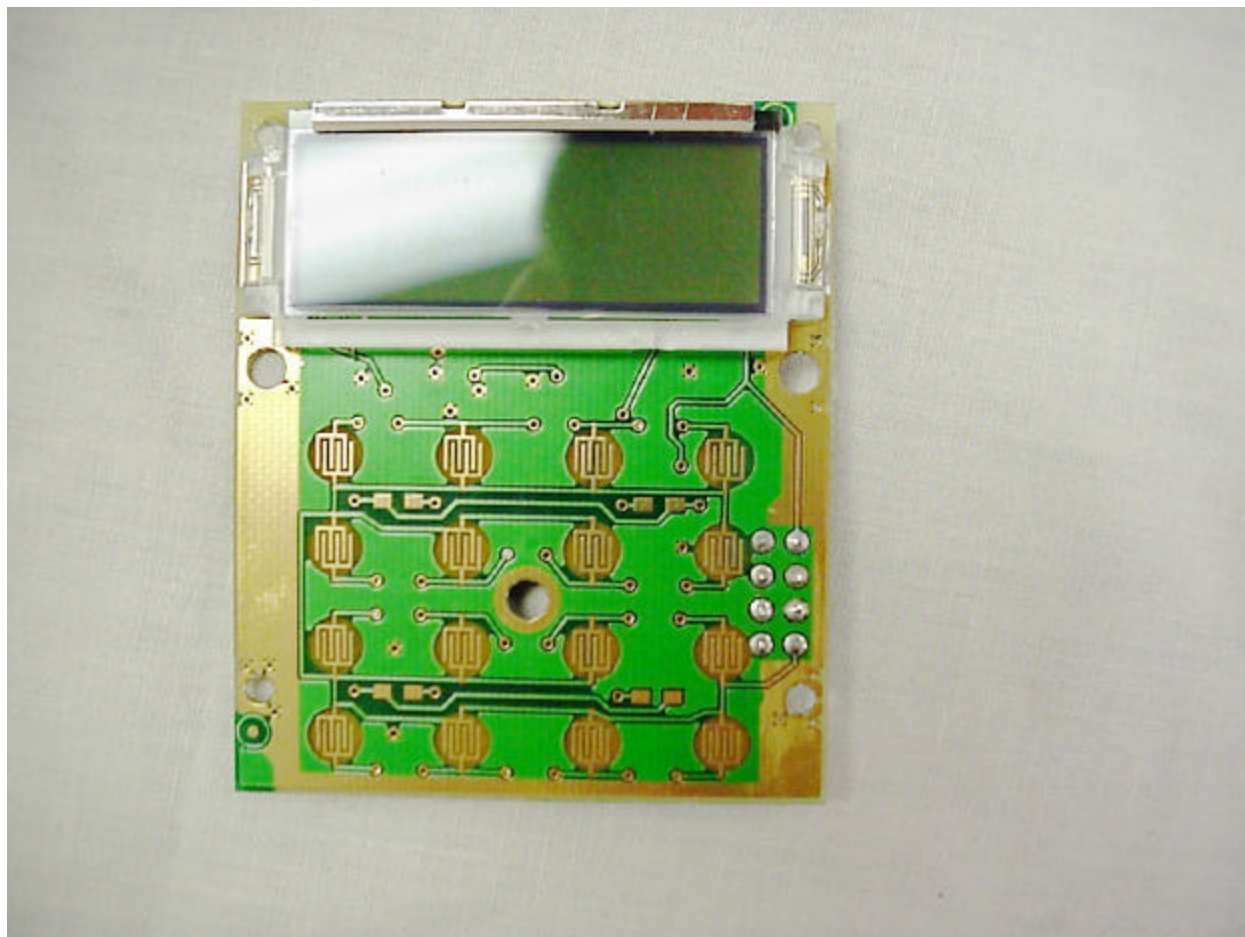


Photo 9. Alphanumeric Display Board, Bottom View

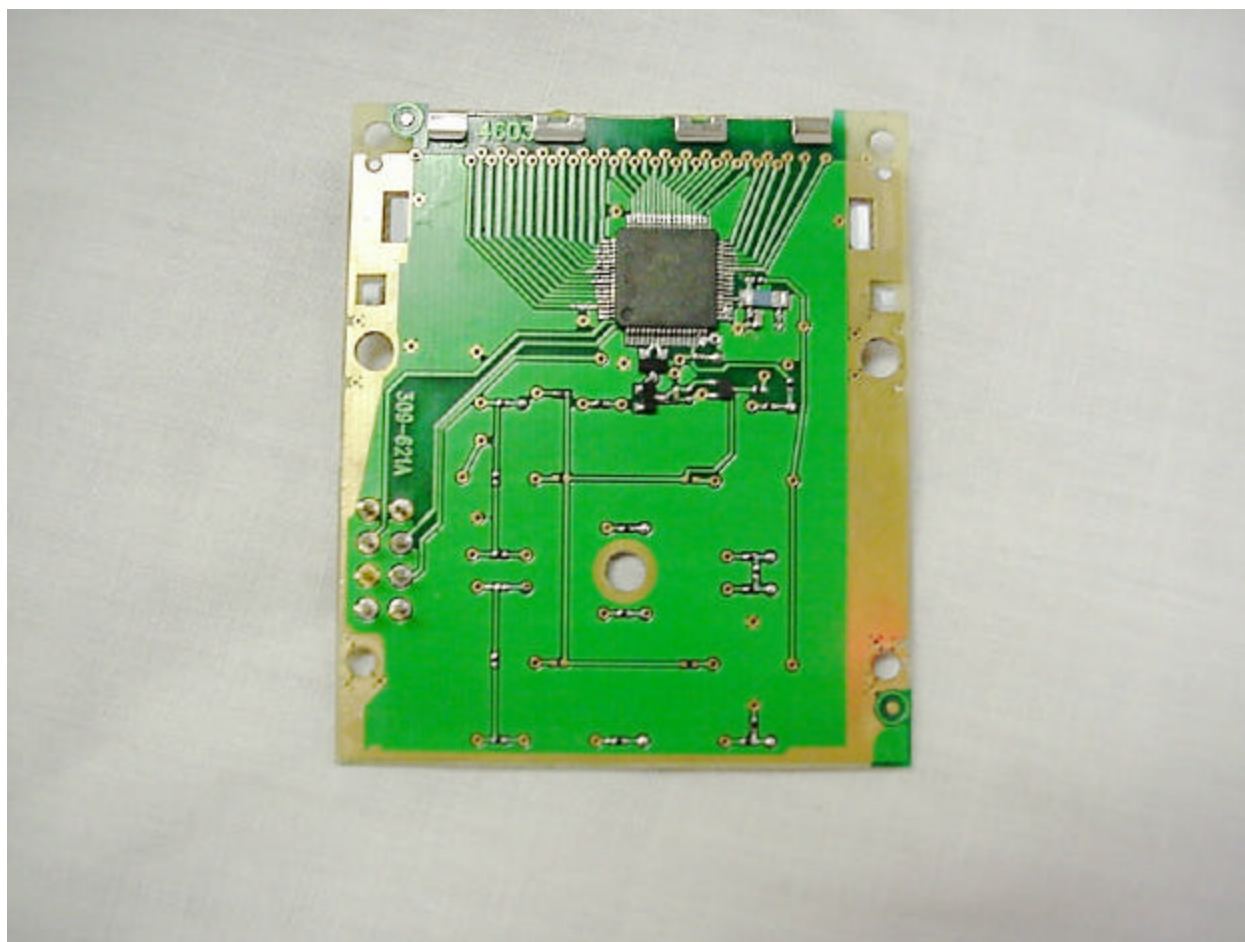


Photo 10. Options Board, Top View (Shield Removed)

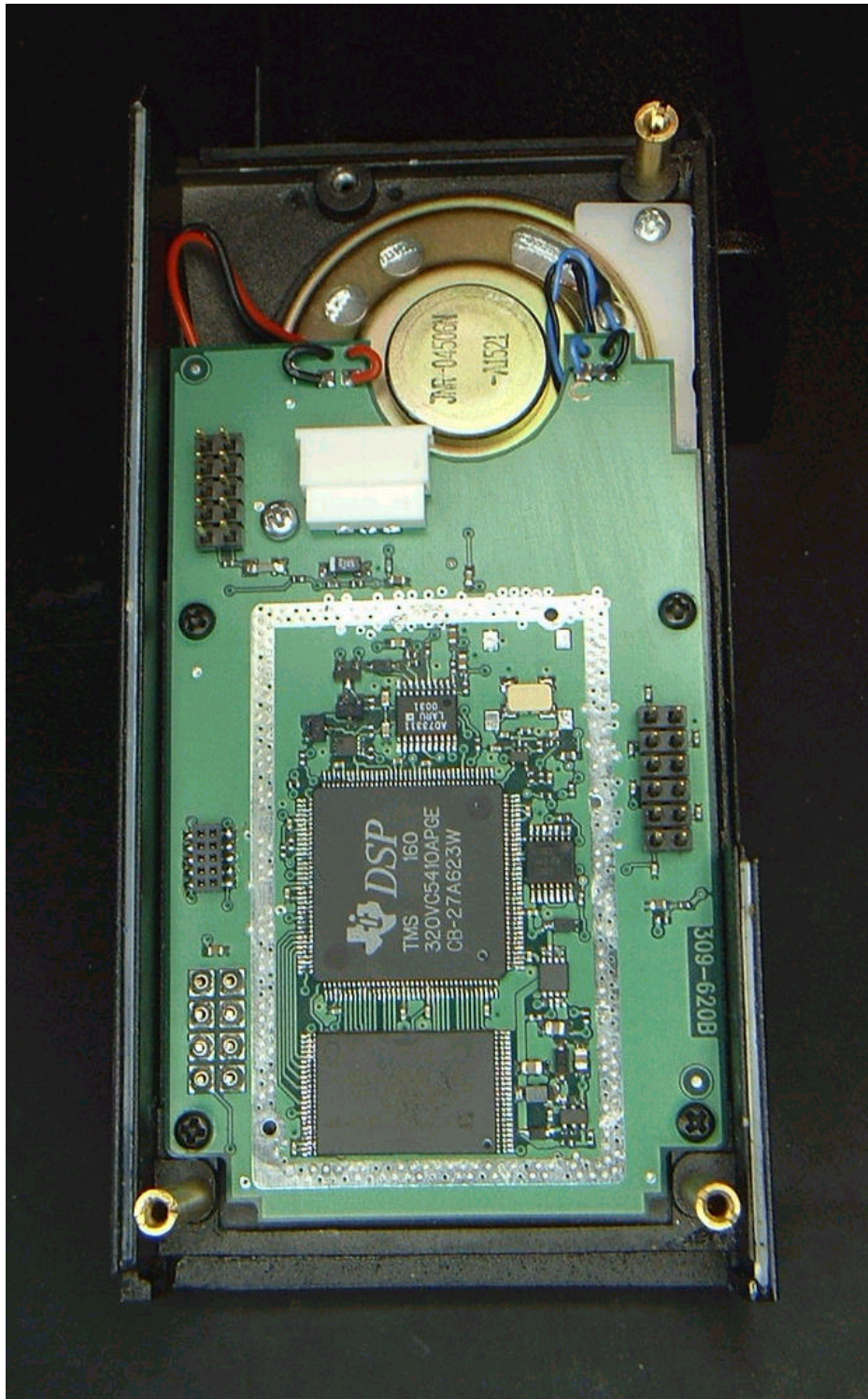




Photo 11. Transmitter Receiver Board, Solder Side

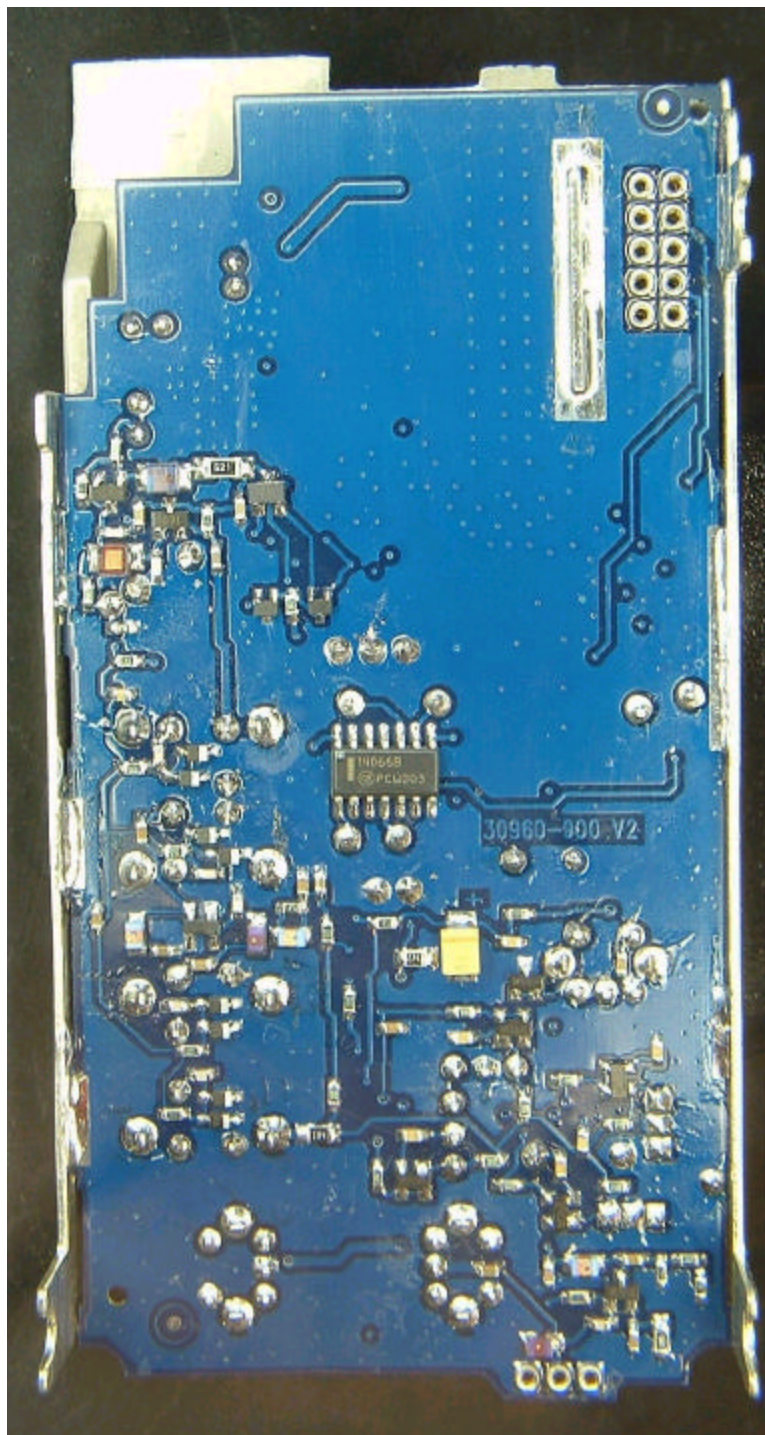


Photo 12. Main Board, Solder Side

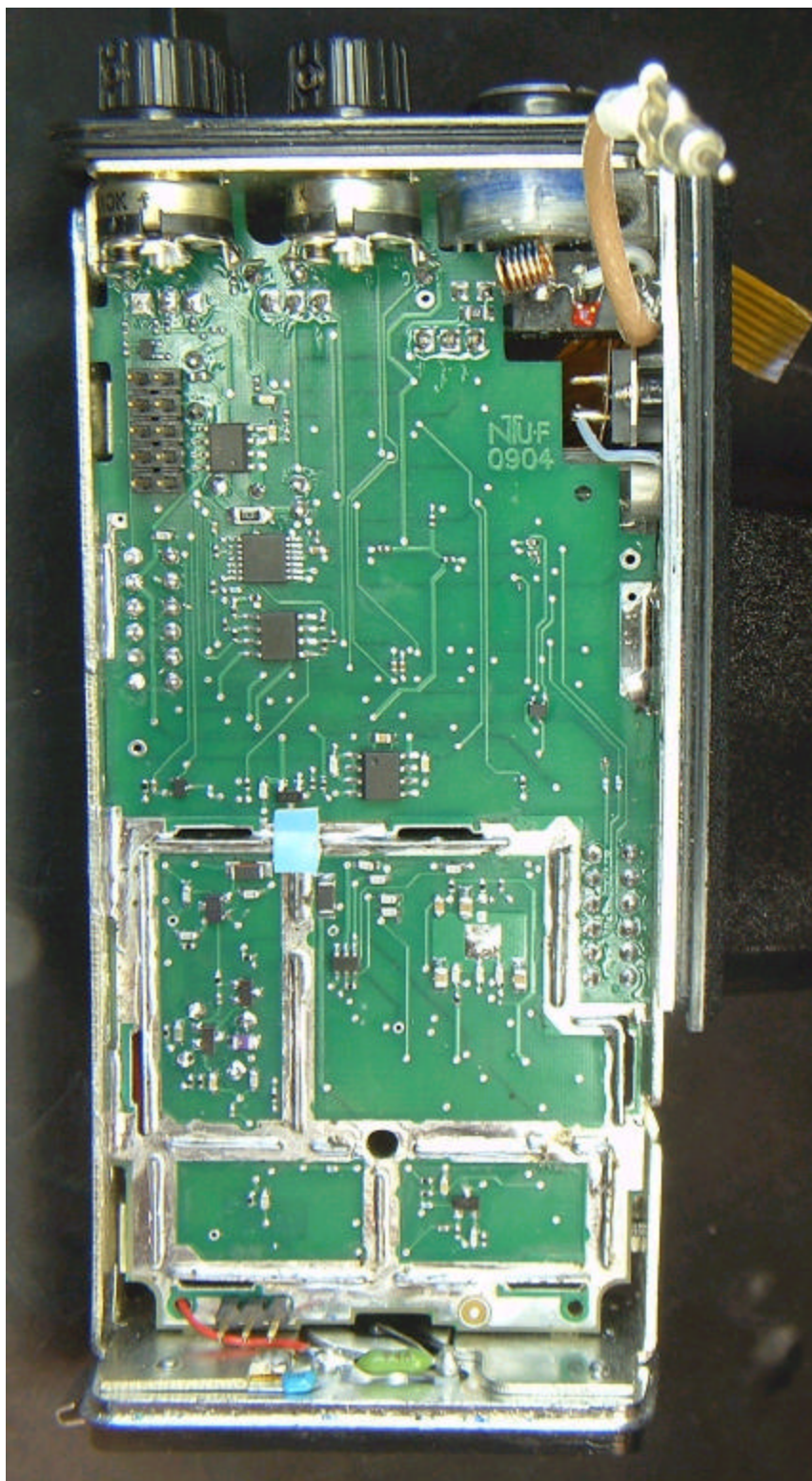




Photo 13. Main Board, Top (Shield Removed)

