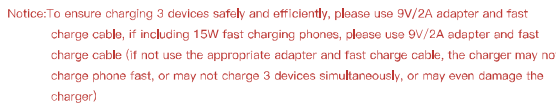
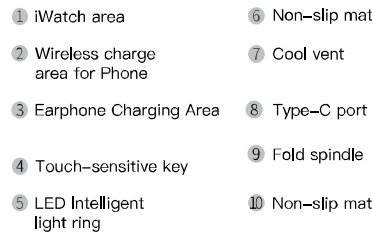


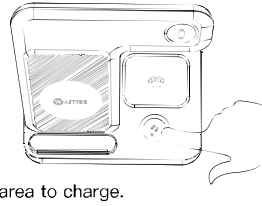
## 3 in1 Fast Wireless Charger User Manual



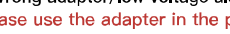
This 3-in-1 wireless charger, a compact charging stand, powered from only one outlet, can charge 3 devices simultaneously. For charging your mobile phone and apple watches, just put them on, all this will make your desk clean and tidy, and make your life easier. The charger is so space-saving designed that can help you integrate your mobile phone intelligent life very well, especially for Apple product users. Besides, it is fashion that the light ring is so shining and has breathing effect showing the charging state, if you want to turn off or turn on the light, just touch the touch-sensitive key.



1. Connect the charger to a 9V/2A adapter through a type-c fast charge cable to switch on the power;
2. Put your phone on the charger;
3. Put the Apple watch on and suck it up to charge (roll the watchband to minimize to charge better);
4. Place the earphone box in the wireless charging area to charge.

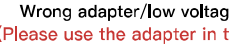
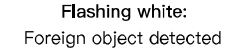


Foreign object detected



The diagram illustrates four LED indicator states for the wireless charger:

- White:** standby/not charging
- Breathing white:** charging phone
- Flashing white:** Foreign object detected
- Wrong adapter/low voltage alert:** (Please use the adapter in the package)

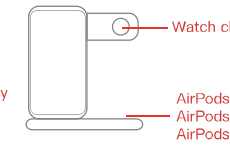
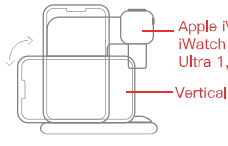


Apple iWatch  
iWatch S2-S9, SE,  
Ultra 1, 2

Vertically or horizontally

Watch charging area

AirPods 2  
AirPods Pro  
AirPods (3rd Generation)



**1. iPhone:**  
Apple: iPhone 15, 15 Pro, 15 Pro Max, 15 Plus, 14, 14 Pro, 14 Pro Max, 14 Plus, 13, 13 Pro, 13 Pro Max, 12, 12 Pro, 12 Pro Max, SE, 11, 11 Pro, 11 Pro Max, XS, XS Max, XR, XS, 8 Plus  
Samsung: Galaxy S23 Ultra S23+, S23+, Galaxy S22 Ultra S22+, S22 S21 Ultra S21+, S21 S21 FE Galaxy S, 2150, 21+50, 21 Ultra 5G FE Galaxy S20 S20+, S20 Ultra 5G 10+, 10e, 9.9+, 8.8+, 7 edge, 8.6 edge, 8 edge, 8 G9209, 8 Active, Galaxy Note: 10, 10e, 10, 9.8, 7.6, 5.  
Google: Pixel 7a, Pixel 7 Fold, Pixel 7, Pixel 7 Pro, Pixel 6 Pro, Pixel 6, Pixel 5.  
**Including** other devices with wireless charging support built-in;  
**Note:** (All devices must meet the G1 standard).

The device does not comply with part 15f of the FCC Rules. Operation is subject to the following conditions: (1) This device may not cause harmful interference, and (2) this device must accept any interference received, including interference that may cause undesired operation.

Any Changes or modifications not expressly approved by the party responsible for compliance could void the user's authority to operate the equipment.

This device complies with the limits for a Class B digital device, pursuant to part 15f of the FCC Rules. These limits are designed to provide reasonable protection against harmful interference in a residential installation. This device uses technologies that can identify and adapt to digital signals, such as radio or television broadcasts, and may, if not installed and used in accordance with the instructions, may cause harmful interference to radio communications. However, there is no guarantee that interference will not occur in a particular installation. If interference is caused, the user is encouraged to try to correct the interference by one or more of the following measures:

- Reorient or relocate the receiving antenna.
- Increase the separation between the equipment and receiver.
- Move the equipment into an outlet or a different wall from that to which the receiver is connected.

Consult the dealer or an experienced radio/TV technician for help.

The FCC has determined that this device meets the requirements for operation in typical operating conditions, where a person is no closer than 20 centimeters from the device surface at all times, except for non-repetitive patterns with transient time intervals. The FCC has determined that this device meets the requirements to be fully compliant with the FCC RF Exposure requirements of KDB 474892.

This device contains license-exempt transmitter(s)/receiver(s) that comply with Innovation Science and Economic Development Canada's license-exempt radio frequency (RF) equipment standard: RSSA(s) (transmitter(s)/receiver(s) that comply with Innovation Science and Economic Development Canada's license-exempt RSSA(s)). Operation is subject to the following two conditions:

- (1) this device may not cause interference;
- (2) this device must accept any interference, including interference that may cause undesired operation of the device.

**Canada Radiation Exposure: Radiation Exposure:** This equipment complies with Canada radiation exposure limits set forth for an uncontrolled environment. This equipment does not emit radio frequency (RF) energy. This equipment should be installed and operated with minimum distance of 10cm from the radiator body. This device and its internal(s) must not be co-located or operated in conjunction with any other antenna or transmitter.

**Declaration de FISED Canada:**  
Ce produit correspond des tsémetteur(s)/récepteur(s) sans licence / conformes à l'annexe RSSA des exemptions du licence de Sciences et Développement économique Canada. L'opération est sous réserve des deux conditions suivantes:

- (1) cet appareil ne peut pas causer d'interférences et
- (2) cet appareil doit accepter toute interférence y compris peut provoquer le fonctionnement indésirable de l'appareil.

**Canada Radiation Exposure: Radiation Exposure:** This equipment complies with Canada radiation exposure limits set forth for an uncontrolled environment. This equipment does not emit radio frequency (RF) energy. This equipment should be installed and operated with minimum distance of 10cm from the radiator body. This device and its internal(s) must not be co-located or operated in conjunction with any other antenna or transmitter.

un environnement incontrôlé noncé d'exposition RF Pour maintenir le respect des guides d'exposition R F d'IC, équipement doit être installé et actionné avec une distance minimale de 10cm le radiateur de votre corps. Cet appareil et ses antennes ne doivent pas être colocalisé en opération en conjonction avec toute autre antenne ou émetteur.

1. Please keep the charger away from water or other liquid;
2. If you need to clean the charger, please make sure it is not connected power supply;
3. Using environment temperature remains 0—45°C.
4. Please use the adapter included in the package for better charging
5. Please use a mobile phone case with a thickness of less than 4MM.
6. If you use an iPhone 12 Pro Max/13 Pro Max series mobile phone, Please do not use a mobile phone case thicker than 2MM to achieve the best charging effect.

- 1.If you're experiencing interrupted or slow charging, check the following:
  - (1) The back of your phone should not have any metal pop sockets, or credit cards.
  - (2) Put the phone in the center of the charging surface (This lets the charging coil in your phone line up with the one inside the wireless charger).
  - (3) The wireless charging coil on Sony phones is located slightly below center.

(4) Phone cases should be no thicker than 4 mm for effective charging

(5) Check whether the adapter is QC3.0 fast charger.

**2.If you're failing to charge your device, please try out the following:**

- (1) Please restart your cell phone and test with other USB cable.
- (2) Please check whether the indicator turns on or not.
- (3) Please check the Adapter is QC3.0 Quick Charger (Output:9V/2A) or not, iPhone original adapter does not match the wireless charger.
- (4) Please check whether your Phone case thickness<=4mm). Metalting or Magnetic Pad will not be available.

**3.If you're using the recommended wireless charger with the QC3.0 Adapter and have removed any potential charging obstructions, but are still experiencing issues, try:**

- (1) Replacing the cable connecting your wireless charger
- (2) Rebooting your phone.
- (3) Unplug the adapter and reinsert.

If your problem has not been solved by following the above steps, please reach out to us via Amazon's message center or [info@wait4ee.com](mailto:info@wait4ee.com). In order to solve it for you faster, please have the following information at hand: your phone's model, the type of wall charger you are using, and the type of phone case you are using (with a link if possible). Optionally, you may include a video to illustrate the problem you are meeting.

Made in China