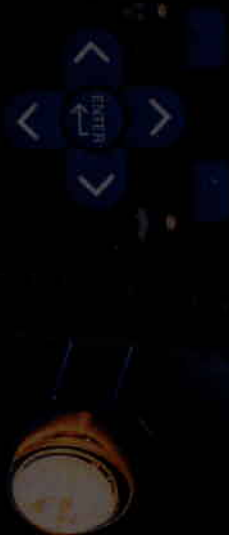


# StarMOBILE

## Quick Reference Guide



### Table of Contents

Device Screen Layout

Applications Use

Device Hardware And Update

### Home Screen Diagram

#### Wireless Strength

Indicates the strength of your wireless network signal.

#### Battery Strength

Indicates the battery strength of the device.

#### Mode of Operation

Indicates the current operating state of the device.

#### Vehicle Connection

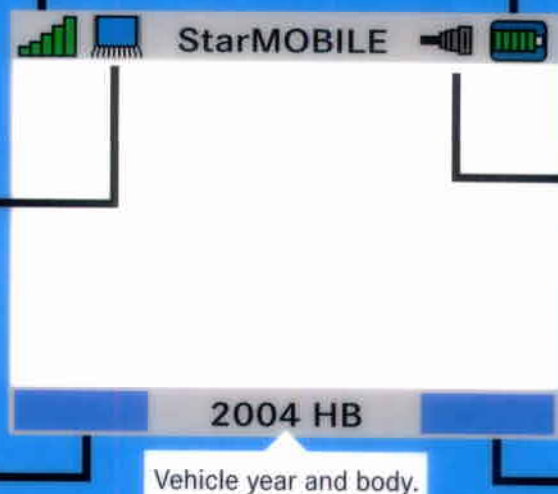
Indicates whether tool is connected to a vehicle.

#### Left Function Button

Perform the function in the lower left display. Functions vary according to the context of individual screens.

#### Right Function Button

Perform the function in the lower right display. Functions vary according to the context of individual screens.



# Keypad Controls



## Left Function Button

Perform the function in the lower left of the display screen. Functions vary according to the context of individual screens.

## Network LED

Flashes green when device receives traffic from an active network.

## Power LED

LED	Description
	Powered up from internal battery - green LED off and red LED on
	Powered up from external power and not charging - green LED on and red LED off
	Powered down and not charging - both LED's off
	Powered up and charging - green LED on and red LED flashes
	Powered down and charging - green LED off and red LED flashes

## Right Function Button

Perform the function in the lower right of the display screen. Functions vary according to the context of individual screens.

## Vehicle LED

Flashes green during communication between the device and vehicle.

## Navigation Keys

Standard controls for navigation and selection within the context menus in the display screen.

## Power Button

Power the device on/off

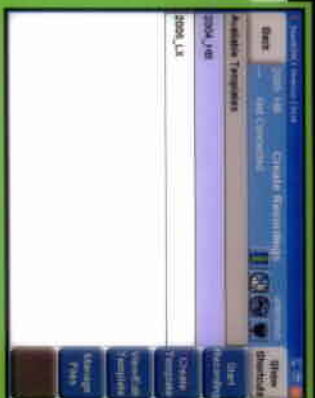
# Recorder Setup

## STEP 1

Navigate to **Create Recordings**

From the **Home** screen, navigate to **Create Recordings** by selecting **More Options > Custom Display**.

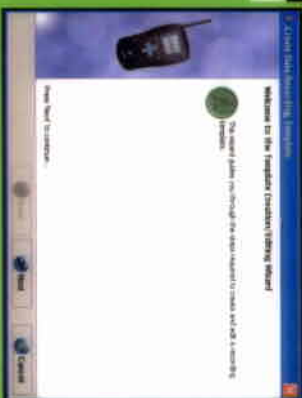
Select **Create Template**.



## STEP 2

Follow wizard steps

Follow the instructions of the template creation wizard, pressing **Next** at the completion of each step.

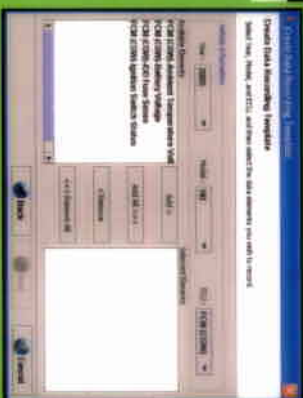


## STEP 3

Enter vehicle information

Select the desired **Model Year**, **Model**, and **ECU** from the drop down combo boxes.

The **Available Elements** pane will display a list of elements within that ECU.



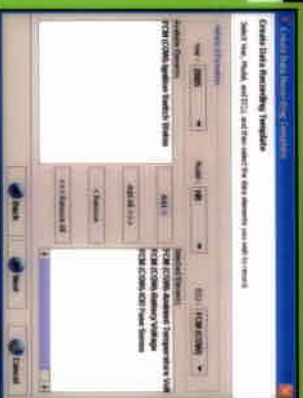
## STEP 4

Add desired data elements

Click **Add >** to add selected data element(s) to the **Selected Elements** pane.

Click **Add All >>>** to add all data elements.

Click **< Remove** or **<<< Remove All** to remove element(s) from the **Selected Elements** pane.



Continued on back

# Recorder Setup

## STEP 5

Enter trigger specifications

Select **Manual** to begin recording by user action. Select **Trigger on any DTC** to begin recording when a DTC is set.

Enter the number of seconds to record before and after triggering.



## STEP 6

Save recording template

Enter a file name and click **Finish** to exit the wizard.



Begins on back

# Vehicle Installation

## STEP 1

Connect the tool to the vehicle

Connect the *StarMOBILE* tool to the Data Link Connector.

**Caution:** Remove *StarMOBILE* battery prior to installation if ambient temperature will exceed 122°F (50°C). Refer to instructions at DealerCONNECT or [www.dectools.com](http://www.dectools.com).

## STEP 2

Tuck tool and route cables out of the driver's way

Ensure that the placement of the tool and routing of the cables do not impair the driver's ability to operate the vehicle. Place the tool and cables away from the control pedals in order to prevent entanglement. A loose cable may entangle a foot and prevent normal operation of the brake, clutch, and accelerator pedal.

## STEP 3

Place trigger in an easily accessible location

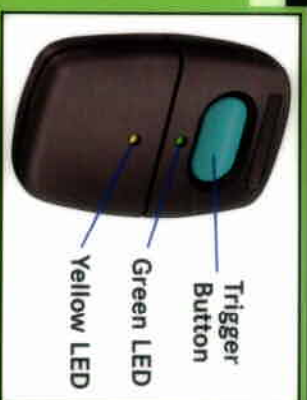
Ensure that the trigger placement will not impair the driver's ability to operate the vehicle. The driver should be able to locate the trigger and initiate a recording without having to look away from the road.

## STEP 4

Run through operation checklist

Start the engine. The yellow LED may blink momentarily, but will transition to the green LED.

Press the trigger button. The green LED will blink every second to indicate that an event file is being saved.



## STEP 5

Give customer copy of instructions

Make a copy of the **Customer Instructions** found on the reverse of this card to give to the customer. Review it with the customer and answer any questions that they may have. Discuss proper use from a safety perspective with the customer.

# Customer Instructions

## STEP 1

### Inspect tool placement

Ensure that the *Star/MOBILE* tool and cables do not impair your ability to drive. A loose cable can entangle a foot and prevent normal operation of the brake, clutch, and accelerator pedal. If you are uncomfortable with the setup, ask the technician to relocate the tool and reroute the cables.

## STEP 2

### Inspect trigger placement

Ensure that you can easily access the trigger to initiate a recording. If you must look away from the road in order to operate the trigger, ask the technician to relocate the trigger placement.

## STEP 3

### Follow operating procedure

Unless instructed otherwise, you will need to press the trigger button when you want to begin recording.

Once triggered, the green LED will blink every second during recording. You will not be able to begin another recording until the current one finishes.

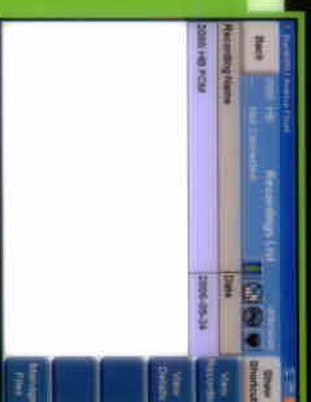


## STEP 1

### Navigate to Recordings List

From the Home screen, navigate to **Recordings List** by selecting **More Options > View Recordings**.

Highlight the desired recording and select **View Recording**.



## STEP 2

### Select desired data element(s)

Check the boxes in the **Graph** column to add desired element(s) to the graph.

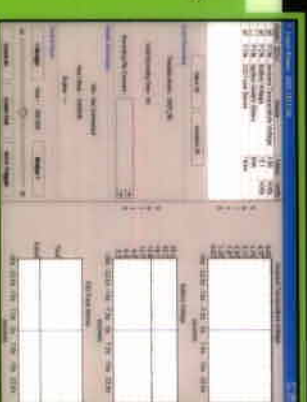
Uncheck the boxes to remove element(s) from the graph.



## STEP 3

### Manipulate graph as desired

Utilize the controls in the **Control Panel** to perform standard actions such as **Zoom In** and **Zoom Out**.



# Event Display

# Care of the StarMOBILE Tool

## STEP 1

### Follow standard guidelines

The *StarMOBILE* tool has been designed to operate in a typical shop environment, but treating it with care will ensure its long life.

Clean the tool regularly and avoid long-term contact with harsh materials or temperatures.

Avoid using the *StarMOBILE* tool for long periods in temperatures above 122°F (50°C)

## STEP 2

### Care of the LCD screen

Use a clean (damp) non-abrasive cloth towel and glass cleaner (such as Mopar Window Cleaner) to clean the screen surface when necessary.

Apply cleaning solution to the towel rather than directly to the LCD screen.

## STEP 3

### Care of the enclosure

Use a clean (damp) non-abrasive cloth towel and a mild cleaning solution to clean the enclosure's surface.

Apply cleaning solution to the towel rather than directly to the tool enclosure.

## STEP 4

### Cautions and warnings

Do not allow the *StarMOBILE* tool to come into contact with strong solvents such as throttle body cleaner, brake cleaner, contact cleaner, xylene, or acetone.

Avoid exposure to brake fluid, antifreeze, and petroleum products. If exposed, remove all traces of the chemical as described above.

Avoid contact of the tool's case with high temperatures.

## **ADDENDUM TO STARMOBILE READ-ME-FIRST**

### **FCC Compliance Statements**

**This device complies with Part 15 of the FCC Rules. Operation is subject to the following two conditions: (1) this device may not cause harmful interference, and (2) this device must accept any interference received, including interference that may cause undesired operation.**

**In accordance with FCC 15.21, changes or modifications not expressly approved by the party responsible for compliance could void the user's authority to operate the equipment.**

**If necessary, the user should consult the dealer or an experienced radio/television technician for additional suggestions. The user may find the following booklet helpful: "Something About Interference." This is available at FCC local regional offices. Our company is not responsible for any radio or television interference caused by unauthorized modifications of this equipment or the substitution or attachment of connecting cables and equipment other than those specified by our company. The correction will be the responsibility of the user. Use only shielded data cables with this system.**

**In accordance with FCC 15.21, changes or modifications not expressly approved by the party responsible for compliance could void the user's authority to operate the equipment.**

**The FCC has granted an equipment authorization for this product with all reported SAR levels evaluated as in compliance with the FCC RF emission guidelines. SAR information for this device can be found under the Display Grant section of <http://www.fcc.gov/oet/fccid> after searching on FCC ID TE4CH9801.**

**This is a portable hand held device. The highest reported SAR is 0.79 mW/g**

**The StarMOBILE is a portable handheld device. It is not a device that is worn on the body. It is normally mounted in a vehicle away from the occupants. The closest it ever comes to the body is if end user is in fact using it as a handheld device. This device is not intended to be held to up to the head.**

### **IC Compliance Statements**

**This device has been designed to operate with an antenna having a maximum gain of 2 dB. Antenna having a higher gain is strictly prohibited per regulations of Industry Canada. The required antenna impedance is 50 ohms.**

**Operation is subject to the following two conditions: (1) this device may not cause interference, and (2) this device must accept any interference, including interference that may cause undesired operation of the device.**

**To reduce potential radio interference to other users, the antenna type and its gain should be so chosen that the equivalent isotropically radiated power (EIRP) is not more than that required for successful communication.**