

FIGURE 3
PUSH BUTTON TRANSMITTER (M/N: BE1240)
COVER REMOVED

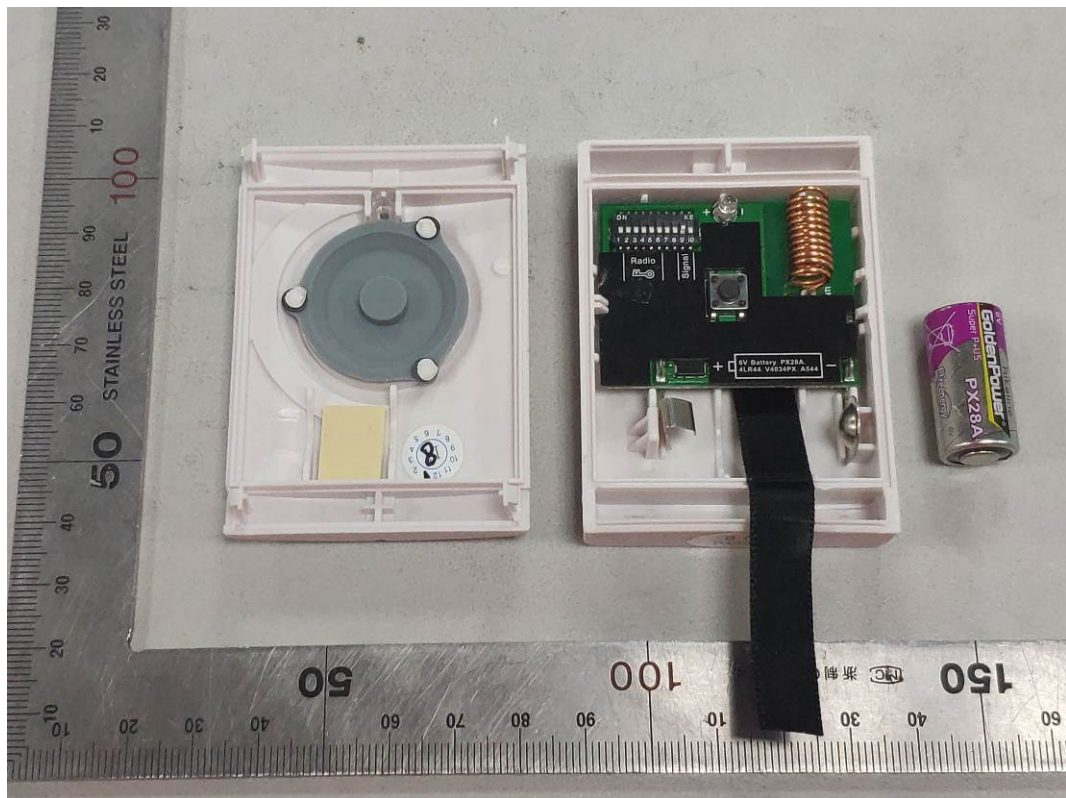


FIGURE 4
PUSH BUTTON TRANSMITTER (M/N: BE1240)
MAIN BOARD(FRONT VIEW)

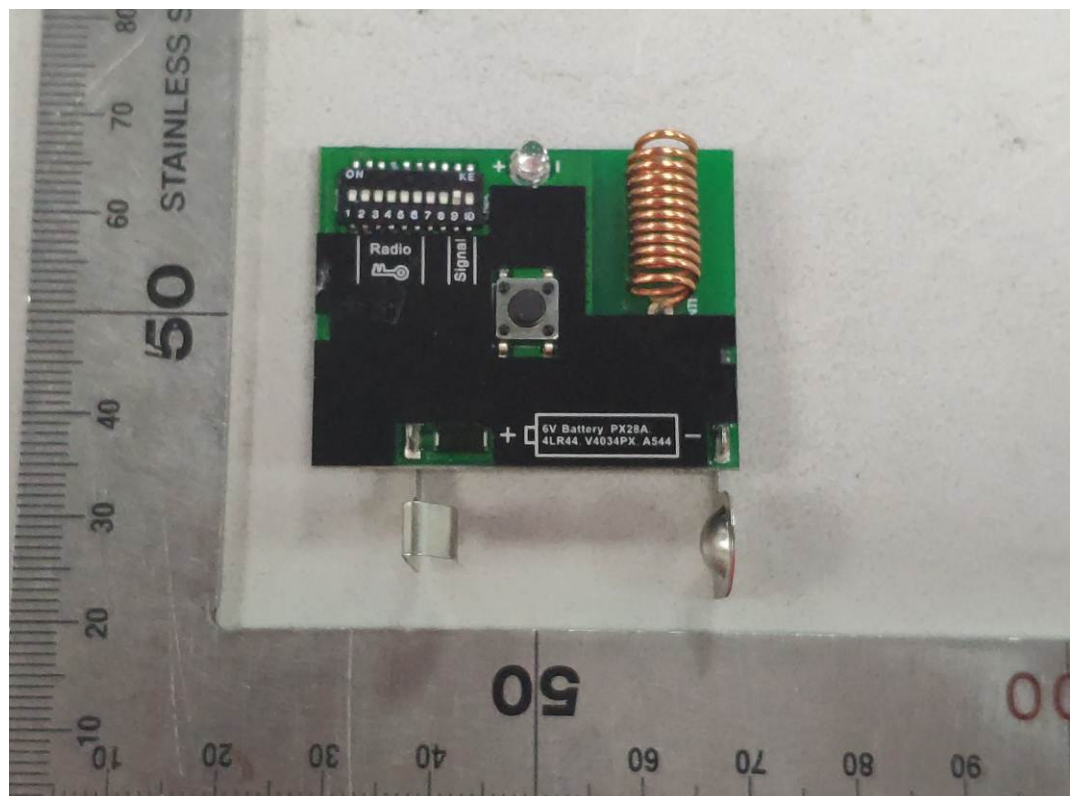


FIGURE 5
PUSH BUTTON TRANSMITTER (M/N: BE1240)
MAIN BOARD(BACK VIEW)

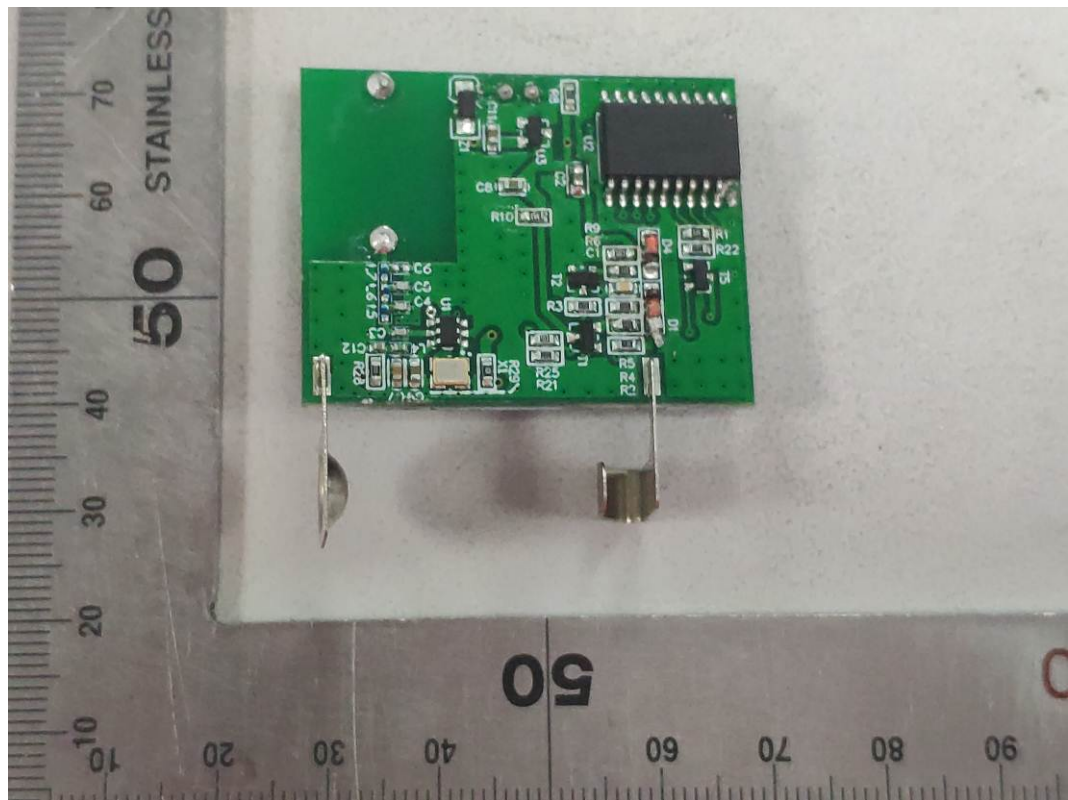
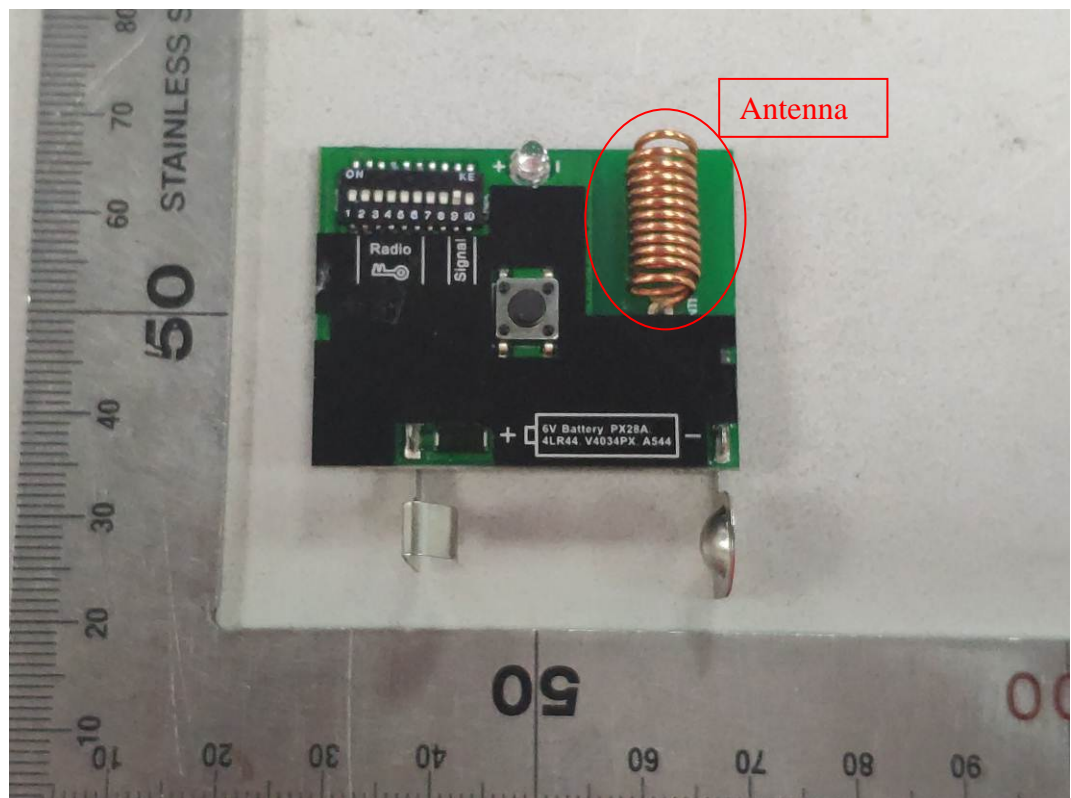


FIGURE 6
PUSH BUTTON TRANSMITTER (M/N: BE1240)
ANTENNA



The Antenna uses a unique coupling to the intentional radiator, is comply with the 15.203 requirement.