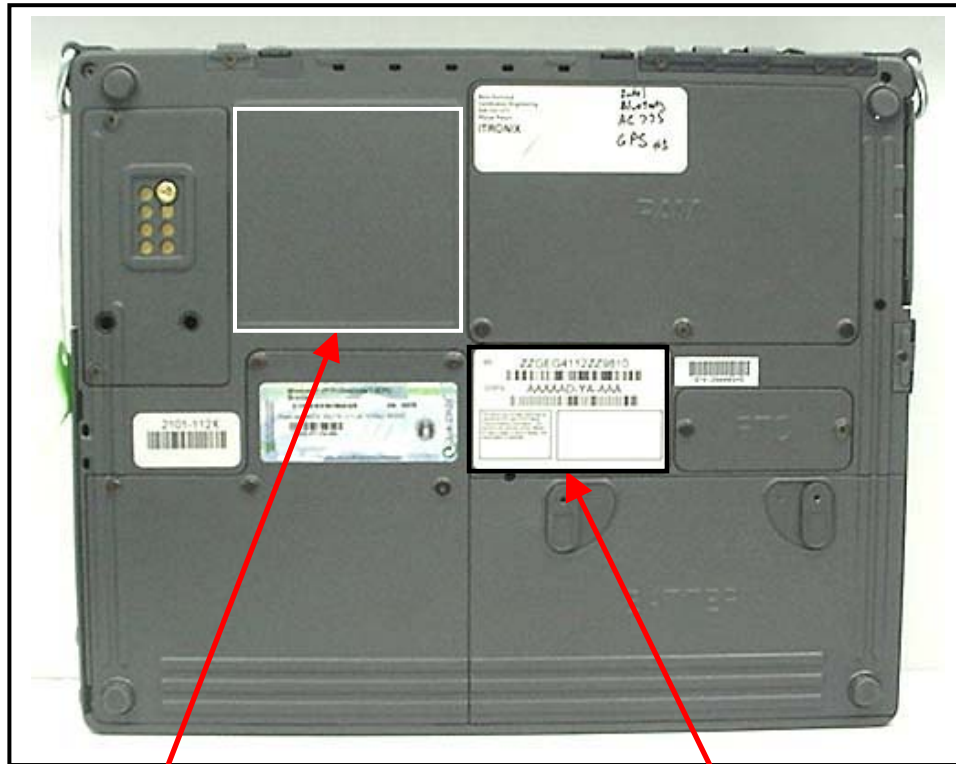


FCC ID LABEL & LOCATION

LABELING REQUIREMENTS PER §2.925

The label(s) shall be permanently affixed at a conspicuous location on the device.



**SEE NEXT PAGE(S) FOR
FCC Part 15(B) DoC LABEL**

**SEE NEXT PAGE(S)
FOR FCC ID LABEL**

	PART NUMBER	OBJECT NAME	REV	VER	REL
MODEL	26-0677-001	LBL-AC775-3054-BTGB3	***	***	***
DRAWING	26-0677-001	26-0677-001_A.775-3054-BT-G3	***		

NOTES: (UNLESS OTHERWISE SPECIFIED).

1. FOR LABEL MANUFACTURE SEE ITRONIX
DRAWING 26-0637-000.
2. PART(S) SHIPPED TO ITRONIX SHALL BE PACKAGED
FOR SHIPMENT AND/OR STORAGE IN A CLEAN
PROTECTIVE CONTAINER PER ITRONIX PACKAGING
AND SHIPPING SPEC. QE3-002. IF A BAG IS USED
IT MUST BE NON-STATIC GENERATING.

The diagram shows the back of the Itronix IX260+ device with two labels. The top label is the FCC ID label, which contains the following text: FCC ID: KBC1X260PNLA775BT, IC: 1943A-1X260Pe, Complies with Part 68 rules, FCC Reg. 6QXTA1-36152-M5-E, Modem IC: 4023 11777, Ren 0.4B, and This product contains Itronix Model 1X260+ FCC and Industry Canada accepted transmitters. The bottom label is the Radio ID label, which contains the text: RADIO ID. The diagram also includes dimension lines: 2.75 REF for the width of the FCC ID label and 1.75 REF for the height of the Radio ID label.

2.75 REF

S/N: [Barcode]

P/N: [Barcode] CFG: [Barcode]

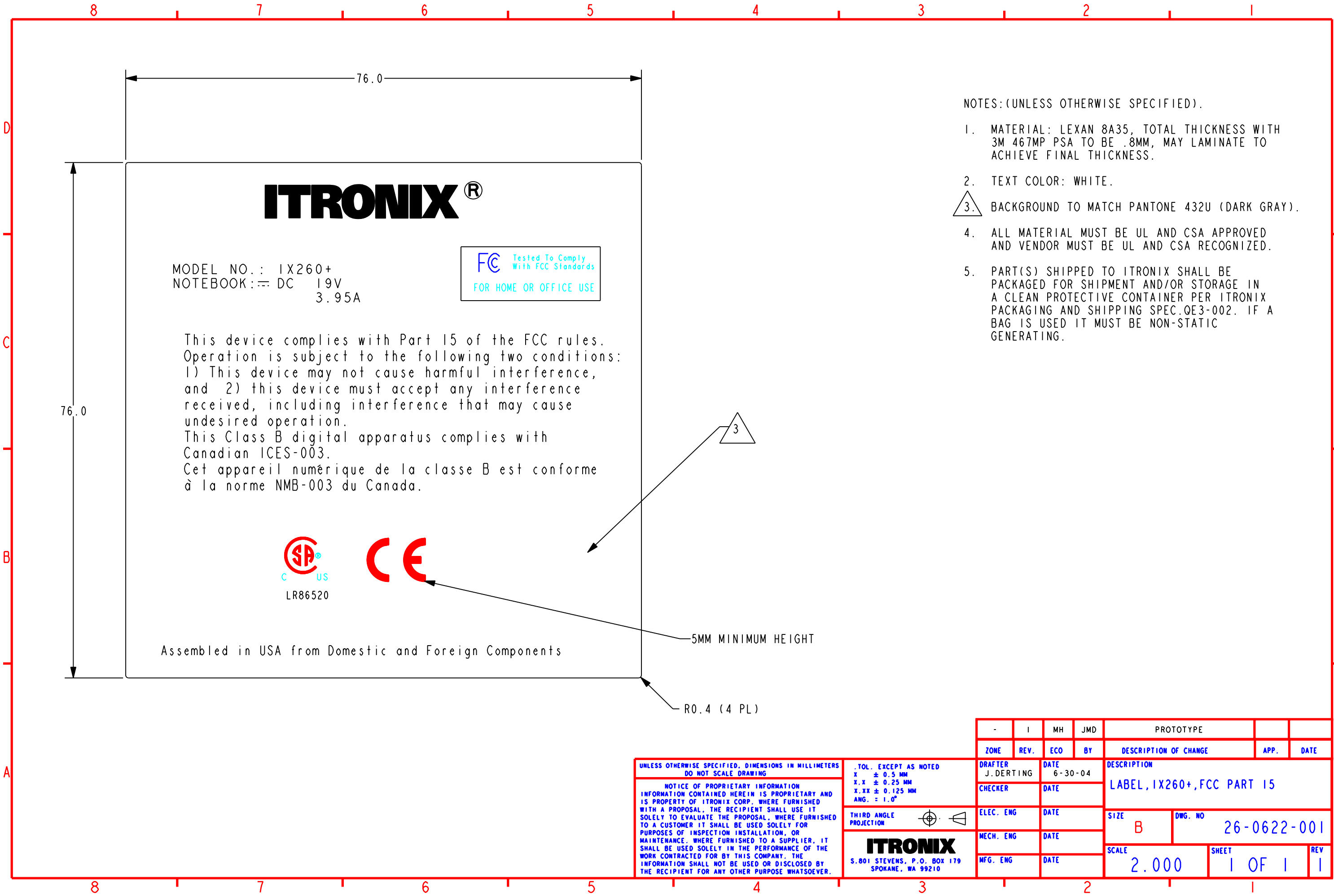
[Barcode]

FCC ID: KBC1X260PNLA775BT
IC: 1943A-1X260Pe
Complies with Part 68 rules.
FCC Reg. 6QXTA1-36152-M5-E
Modem IC: 4023 11777
Ren 0.4B
This product contains Itronix
Model 1X260+ FCC and Industry
Canada accepted transmitters

RADIO ID

1.75 REF

CONFIGURATION													
RADIO					MODEM								
SENAO 3054 WLAN					STANDARD								
SIERRA WIRELESS AC775 WAN													
BLUE TOOTH													
					-	I	MH	JMD	PROTOTYPE RELEASE				
					ZONE	REV.	ECO	BY	DESCRIPTION OF CHANGE		APP.	DATE	
<div>UNLESS OTHERWISE SPECIFIED, DIMENSIONS IN INCHES DO NOT SCALE DRAWING</div> <div>NOTICE OF PROPRIETARY INFORMATION INFORMATION CONTAINED HEREIN IS PROPRIETARY AND IS PROPERTY OF ITRONIX CORP. WHERE FURNISHED WITH A PROPOSAL, THE RECIPIENT SHALL USE IT SOLELY TO EVALUATE THE PROPOSAL, WHERE FURNISHED TO A CUSTOMER IT SHALL BE USED SOLELY FOR PURPOSES OF INSPECTION INSTALLATION, OR MAINTENANCE. WHERE FURNISHED TO A SUPPLIER, IT SHALL BE USED SOLELY IN THE PERFORMANCE OF THE WORK CONTRACTED FOR BY THIS COMPANY. THE INFORMATION SHALL NOT BE USED OR DISCLOSED BY THE RECIPIENT FOR ANY OTHER PURPOSE WHATSOEVER.</div>					.TOL. EXCEPT AS NOTED .XX ± 0.01 INCH .XXX ± 0.005 INCH ANG. = 1.0°		DRAFTER J. DERTING		DATE 1-14-05		DESCRIPTION LBL, 1X260+, 775, 3054 WLN, BT		
					CHECKER		DATE						
					ELEC. ENG		DATE		SIZE B		DWG. NO 26-0677-001		
					MECH. ENG		DATE		SCALE 2.000		SHEET 1 OF 1		REV 1
					MFG. ENG		DATE						
THIRD ANGLE PROJECTION									S.801 STEVENS, P.O. BOX 179 SPOKANE, WA 99210				



NOTES: (UNLESS OTHERWISE SPECIFIED).

1. MATERIAL: LEXAN 8A35, TOTAL THICKNESS WITH 3M 467MP PSA TO BE .8MM, MAY LAMINATE TO ACHIEVE FINAL THICKNESS.
2. TEXT COLOR: WHITE.
3. BACKGROUND TO MATCH PANTONE 432U (DARK GRAY).
4. ALL MATERIAL MUST BE UL AND CSA APPROVED AND VENDOR MUST BE UL AND CSA RECOGNIZED.
5. PART(S) SHIPPED TO ITRONIX SHALL BE PACKAGED FOR SHIPMENT AND/OR STORAGE IN A CLEAN PROTECTIVE CONTAINER PER ITRONIX PACKAGING AND SHIPPING SPEC.QE3-002. IF A BAG IS USED IT MUST BE NON-STATIC GENERATING.

UNLESS OTHERWISE SPECIFIED, DIMENSIONS IN MILLIMETERS
DO NOT SCALE DRAWING

NOTICE OF PROPRIETARY INFORMATION
INFORMATION CONTAINED HEREIN IS PROPRIETARY AND
IS PROPERTY OF ITRONIX CORP. WHERE FURNISHED
WITH A PROPOSAL, THE RECIPIENT SHALL USE IT
SOLELY TO EVALUATE THE PROPOSAL, WHERE FURNISHED
TO A CUSTOMER IT SHALL BE USED SOLELY FOR
PURPOSES OF INSPECTION INSTALLATION, OR
MAINTENANCE. WHERE FURNISHED TO A SUPPLIER, IT
SHALL BE USED SOLELY IN THE PERFORMANCE OF THE
WORK CONTRACTED FOR BY THIS COMPANY. THE
INFORMATION SHALL NOT BE USED OR DISCLOSED BY
THE RECIPIENT FOR ANY OTHER PURPOSE WHATSOEVER.

TOL. EXCEPT AS NOTED
X ± 0.5 MM
X.X ± 0.25 MM
X.XX ± 0.125 MM
ANG. = 1.0°

THIRD ANGLE
PROJECTION

ITRONIX
S.801 STEVENS, P.O. BOX 179
SPOKANE, WA 99210

-	I	MH	JMD	PROTOTYPE			
ZONE	REV.	ECO	BY	DESCRIPTION OF CHANGE		APP.	DATE
DRAFTER J. DERTING	DATE 6-30-04			DESCRIPTION LABEL, IX260+, FCC PART 15			
CHECKER	DATE						
ELEC. ENG	DATE			SIZE B	DWG. NO 26-0622-001		
MECH. ENG	DATE			SCALE 2.000		SHEET 1 OF 1	
MFG. ENG	DATE					REV 1	