

# **802.11b/g WLAN Cardbus Adapter**

## **User Manual**

**Version 1.0**

**No part of this documentation may be reproduced in any form or by any means or used to make any derivative work (such as translation, transformation, or adaptation) without written permission from the copyright owner.**

All the other trademarks and registered trademarks are the property of their respective owners.

### **Statement of Conditions**

We may make improvements or changes in the product described in this documentation at any time. The information regarding to the product in this manual are subject to change without notice.

We assume no responsibility for errors contained herein or for direct, indirect, special, incidental, or consequential damages with the furnishing, performance, or use of this manual or equipment supplied with it, even if the suppliers have been advised of the possibility of such damages.

### **Electronic Emission Notices**

This device complies with Part 15 of the FCC Rules. Operation is subject to the following two conditions:

- (1) This device may not cause harmful interference.
- (2) This device must accept any interference received, including interference that may cause undesired operation.

### **FCC INFORMATION**

The Federal Communication Commission Radio Frequency Interference Statement includes the following paragraph:

The equipment has been tested and found to comply with the limits for a Class B Digital Device, pursuant to part 15 of the FCC Rules. These limits are designed to provide reasonable protection against harmful interference in a residential installation. This equipment generates, uses and can radiate radio frequency energy and, if not installed and used in accordance with the instruction, may cause harmful interference to radio communication. However, there is no guarantee that interference will not occur in a particular installation. If this equipment does cause harmful interference to radio or television reception, which can be determined by turning the equipment off and on, the user is encouraged to try to overcome the interference by one or more of the following measures:

- Reorient or relocate the receiving antenna.
- Increase the separation between the equipment and receiver.
- Connect the equipment into an outlet on a circuit different from that to which the receiver is connected.
- Consult the dealer or an experienced radio/TV technician for help.

The equipment is for home or office use.

### **R&TTE Compliance Statement**

This equipment complies with all the requirements of the Directive 1999/5/EC of the European parliament and the council of 9 March 1999 on radio equipment and telecommunication terminal Equipment and the mutual recognition of their conformity(R&TTE).

The R&TTE Directive repeals and replaces in the directive 98/13/EEC. As of April 8, 2000.

### **IMPORTANT NOTE**

FCC RF Radiation Exposure Statement: This equipment complies with FCC RF radiation exposure limits set forth for an uncontrolled environment. **This device has been tested for compliance with FCC RF Exposure (SAR) limits in typical laptop configurations** and This Transmitter must not be co-located or operating in conjunction with any other antenna or transmitter.

**Caution:** Changes or modifications not expressly approved by the party responsible for compliance could void the user's authority to operate the equipment.

# **Table of Contents**

<b>INTRODUCTION .....</b>	<b>1</b>
1.1 FEATURES .....	1
1.2 PRODUCT PACKAGE.....	1
1.3 SYSTEM REQUIREMENTS.....	1
1.4 SAFETY PRECAUTION.....	2
<b>INSTALLATION .....</b>	<b>3</b>
2.1 INSTALLATION PROCEDURES.....	3
2.2 VERIFYING A SUCCESSFUL INSTALLATION .....	8
<b>PRISM CONFIGURATION UTILITY BASICS .....</b>	<b>10</b>
3.1 RIGHT-CLICK MENU OF THE TRAY ICON.....	10
Wireless Radio On .....	10
Wireless Radio Off.....	10
Remove Status Icon .....	10
Wireless Network Status .....	11
Advanced Configuration .....	11
WEP Encryption.....	11
IBSS Channel.....	11
Country/Domain .....	11
Version Information .....	11
3.2 THE UTILITY BASICS.....	12
The Status Tab.....	12
The Configuration Tab .....	14
The Encryption Tab .....	15
The IBSS Tab .....	17
The Domain Tab .....	18
The About Tab.....	18
<b>APPENDIX A: TROUBLESHOOTING.....</b>	<b>20</b>
DISABLE 802.11B/G WLAN CARDBUS.....	20
UNINSTALL PRISM CONFIGURATION UTILITY AND THE CARD' S DRIVER.....	20
802.11B/G WLAN CARDBUS DOES NOT WORK PROPERLY .....	20
<b>APPENDIX B: SPECIFICATIONS.....</b>	<b>22</b>

# **Table of Figures**

FIGURE 2-1: THE <b>FOUND NEW HARDWARE WIZARD</b> DIALOG BOX.....	3
FIGURE 2-2: LOOKING FOR DRIVERS.....	4
FIGURE 2-3: THE <b>BROWSE FOR FOLDER</b> DIALOG BOX .....	4
FIGURE 2-4: THE <b>HARDWARE INSTALLATION</b> DIALOG BOX.....	5
FIGURE 2-5: INSTALLING THE SOFTWARE.....	5
FIGURE 2-6: THE <b>COMPLETE</b> SCREEN .....	6
FIGURE 2-7: THE <b>PRISM CONFIGURATION UTILITY</b> TRAY ICON .....	6
FIGURE 2-8: THE <b>PRISM WIRELESS SETTINGS</b> DIALOG BOX (FOUR TABS).....	7
FIGURE 2-9: THE <b>WIRELESS NETWORK CONNECTION STATUS</b> DIALOG BOX.....	7
FIGURE 2-10: THE <b>WIRELESS NETWORK CONNECTION PROPERTIES</b> DIALOG BOX .....	8
FIGURE 2-11: THE <b>DEVICE MANAGER</b> DIALOG BOX.....	9
FIGURE 3-1: RIGHT-CLICK MENU OF THE TRAYICON.....	10
FIGURE 3-2: THE <b>REMOVE WIRELESS STATUS ICON</b> DIALOG BOX.....	11
FIGURE 3-3: THE <b>PRIS M WIRELESS SETTINGS</b> DIALOG BOX .....	12
FIGURE 3-4: THE <b>STATUS</b> TAB.....	13
FIGURE 3-5: THE <b>CONFIGURATION</b> TAB .....	14
FIGURE 3-6: THE <b>ENCRYPTION</b> TAB.....	16
FIGURE 3-7: THE <b>IBSS</b> TAB.....	17
FIGURE 3-8: THE <b>DOMAIN</b> TAB.....	18
FIGURE 3-9: THE <b>ABOUT</b> TAB.....	19

## INTRODUCTION

---

Being five times faster than the speed of 802.11b network standard devices, the innovative 802.11g standard lets the wireless network become incredibly easier and faster (up to 54Mbps) than ever. Your 802.11b/g WLAN Cardbus surely will bring you into such a high-speed network sphere. This document describes how to install your 802.11 b/g WLAN Cardbus, which aims to let your computer quickly and seamlessly communicate with 802.11 networks. Wireless LAN is local area networking without wires, which uses radio frequencies to transmit and receive data between PCs or other network devices. Additionally, wireless LAN is able to configure either independent networks, which is also known as peer-to-peer or ad-hoc network, or infrastructure networks. The former is suitable for small or temporary peer-to-peer configurations, and the later is offering fully distributed data connectivity via micro cells and roaming.

To obtain most benefits your 802.11b/g WLAN Cardbus brings, please read this manual carefully before using it.

### 1.1 Features

With 802.11b/g WLAN Cardbus, you can:

- ☐ establish a wireless connection without the hassles and cost of cabling
- ☐ operate Ad-Hoc or Infrastructure mode
- ☐ utilize up to 128-bit WEP encryption
- ☐ enjoy high-speed data transfer rate up to 54 Mbps
- ☐ employ automatic data rate switching which offers maximum reliability, throughput and connectivity
- ☐ possess the network's range up to 100 meters indoor and 400 meters outdoor
- ☐ monitor and configure the network via the supplied friendly-interfaced application – PRISM Configuration Utility

### 1.2 Product Package

Before starting the installation, please make sure the package you purchased includes the following items:

- ☐ One 802.11b/g WLAN Cardbus.
- ☐ One Quick Installation Guide
- ☐ One User Manual

If any of the items above is missing or damaged, please contact your distributor.

### 1.3 System Requirements

To properly operate your Card, your computer should meet the following minimum requirements:

- ☐ Microsoft Windows 98/98 Second Edition/Me/2000 or Windows XP

- ☐ Minimum 5 Mbytes free disk space for installing the driver and the utility program
- ☐ 32 MB RAM or above
- ☐ A CD-ROM drive
- ☐ 300 MHz processor or higher
- ☐ Cardbus interface

#### 1.4 Safety Precaution

In order to let the device function properly, please use only the accessories attached with the device package. If you miss or damage the accessories, please contact your distributor.

## INSTALLATION

It's free and easy for you to install your 802.11b/g WLAN Cardbus and the attached software - **PRISM Configuration Utility**. Simply with a few clicks of the mouse, you will succeed the completion of installation.

To have the 802.11b/g WLAN Cardbus operated appropriately, please read and go along with the instructions below carefully. Here, we will illustrate the installation instructions based on Windows XP operating system.

### 2.1 Installation Procedures

- a) Insert the 802.11b/g WLAN Cardbus into your PC's Cardbus slot. The **Found New Hardware Wizard** dialog box will appear because the system has detected the insertion of the Card.
- b) In the **Found New Hardware Wizard** dialog box, choose **Install from a list or specific location [Advanced]** and then click **Next**.

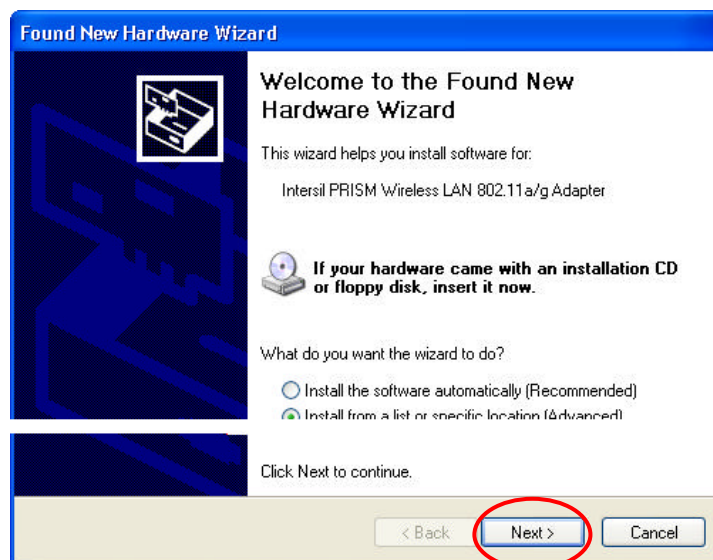


Figure 2-1: The **Found New Hardware Wizard** Dialog Box

- c) When you see the following dialog box shown, choose **Includes this location in the search** under **Search for the best driver in these locations**.

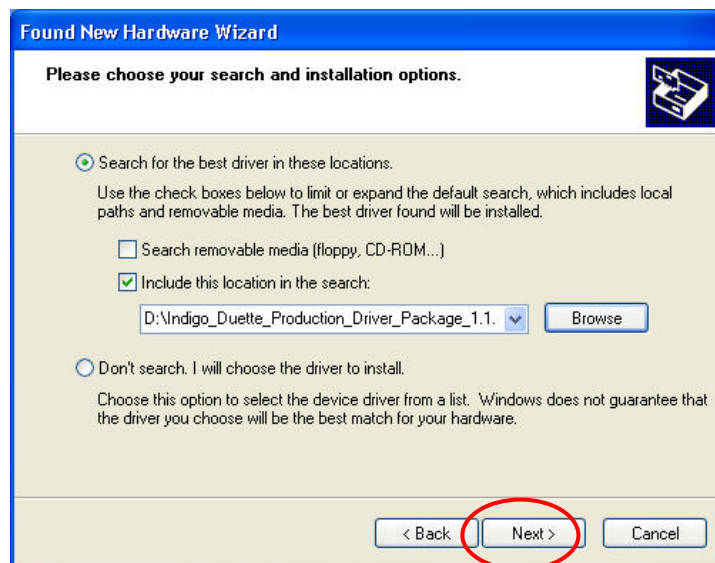


Figure 2-2: Looking for Drivers

- d) Choose **Browse** to open the following dialog box. Find the folder named **Install** from the directories on the supplied CD, and then click **OK** to return to the **Found New Hardware Wizard** dialog box.

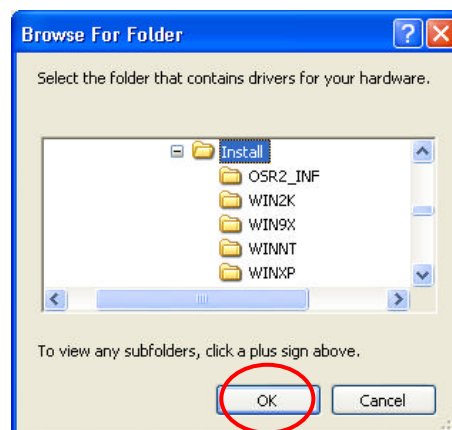


Figure 2-3: The **Browse For Folder** Dialog Box

- e) Choose **Next** to proceed.
- f) Windows will notify you that the driver has not passed Windows Logo testing. Because the Card has been tested to work with Windows XP, please choose **Continue Anyway**.



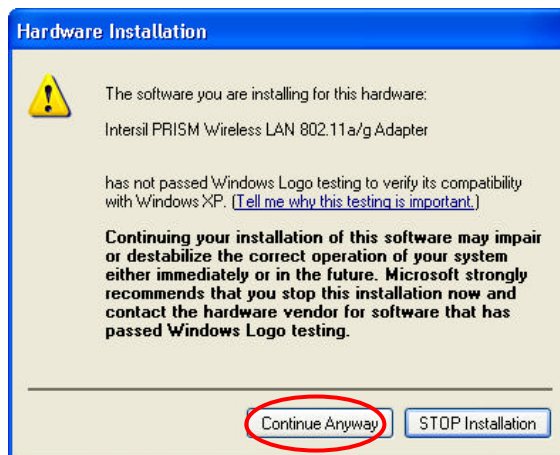


Figure 2-4: The **Hardware Installation** Dialog Box

- g) Your system will start to copy the drivers found. When done, click **Next**.

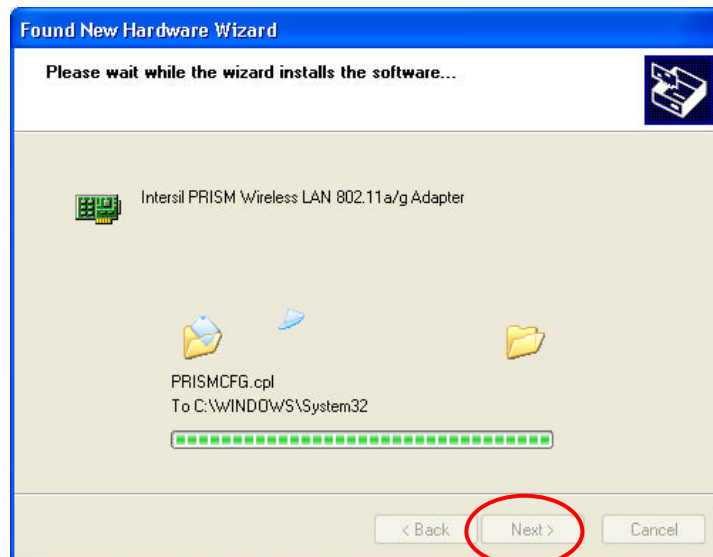


Figure 2-5: Installing the Software

- h) Click the **Finish** button when the **Completing the Found New Hardware Wizard** screen appears.

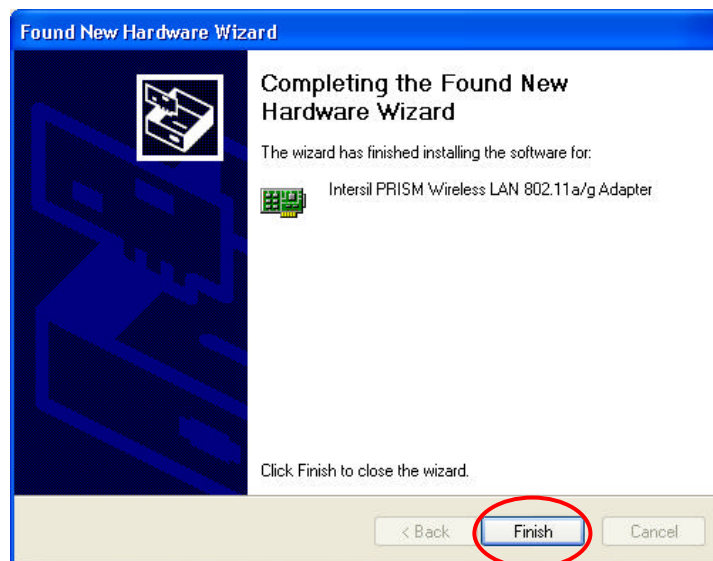


Figure 2-6: The **Complete** Screen

- i) You will find the **PRISM Configuration Utility** icon appeared in the system tray.



Figure 2-7: The **PRISM Configuration Utility** Tray Icon

Double-click the icon to launch the application and open the **PRISM Wireless Settings** dialog box, in which four tabs are contained. However, normally, the dialog box should be consisted of six tabs. This is because Windows XP has its built-in configuration tools – **Windows XP Zero Configuration** to assist you in networking activities. It is recommended to utilize the attached **PRISM Configuration Utility** to enjoy more benefits it brings. Thus, please proceed to the next step to change the default settings of **Windows Zero Configuration** to **PRISM Configuration Utility**.

**Note:** If the computer system you are currently operating is other than Windows XP, you shall find there are six tabs in the **PRISM Wireless Settings** dialog box. Accordingly, the installation is completely finished at this step. Please refer to the next chapter -- **PRISM Configuration Utility Basics** to learn more details on the utility.

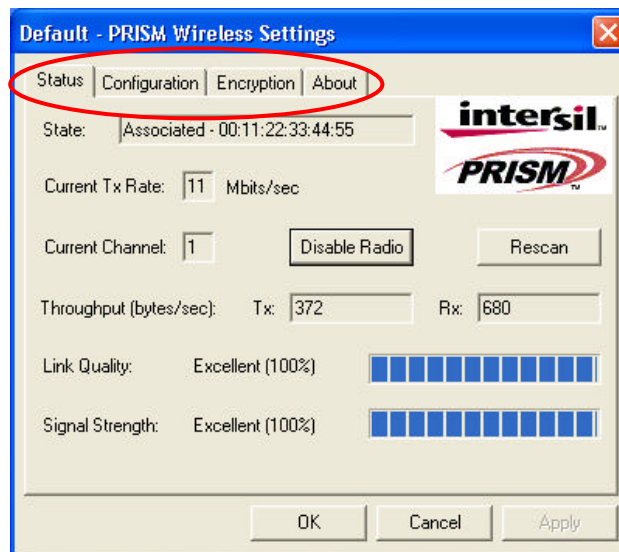


Figure 2-8: The **PRISM Wireless Settings** Dialog Box (Four Tabs)

- j) Right-click the **Network Connections** icon at the task bar to open the **Wireless Network Connection Status** dialog box, and then select **Properties**.

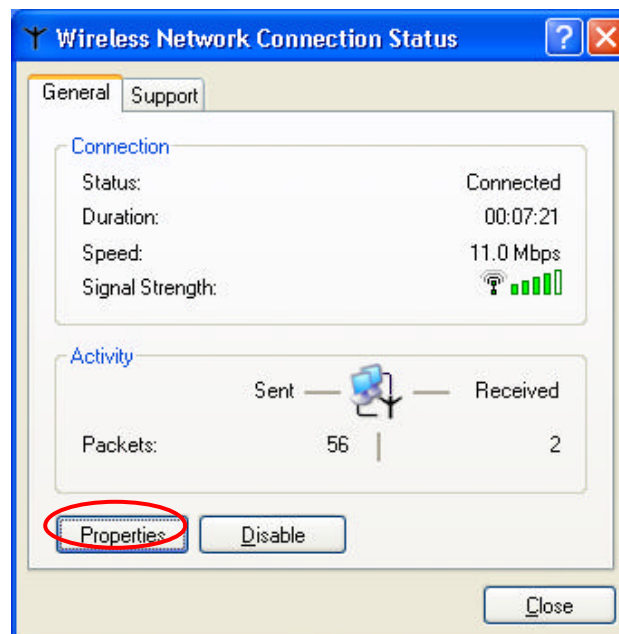


Figure 2-9: The **Wireless Network Connection Status** Dialog Box

- k) Choose the **Wireless Networks** tab in the **Wireless Network Connection Properties** dialog box, and then remove the tick in the **Use Windows to configure my wireless network settings** checkbox.

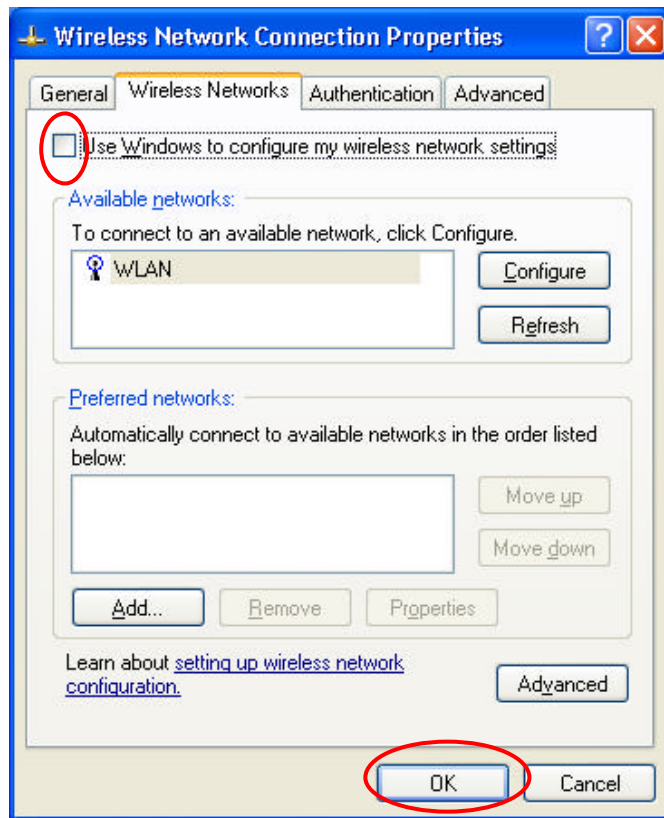


Figure 2-10: The **Wireless Network Connection Properties** Dialog Box

- l) Click **OK**. Now, you have successfully removed the **Windows Zero Configuration**.

To monitor and configure the network via **PRISM Configuration Utility**, double-click its tray icon, and you should find six tabs contained in the popped up **PRISM Wireless Settings** dialog box at this time. For more details about the utility, please refer to the next chapter -- [PRISM Configuration Utility Basics](#).

## 2.2 Verifying a Successful Installation

To confirm that your 802.11b/g WLAN Cardbus is properly installed, please go along with the procedures below.

1. Right-click the **My Computer** desktop icon and choose **Properties** from the opened menu.
2. In the **System Properties** dialog box, choose **Device Manager** if you are under Windows 98 or Me. If you are operating Windows 2000 or XP, click the **Hardware** tab, and then choose the **Device Manager** button.
3. In the opened window, expand **Network adapters** to find the input device – **Intersil PRISM Wireless LAN 802.11a/g Adapter**. Right-click over the item and choose **Properties**.

4. From the opened dialog box, on the **General** tab, find the descriptions under the **Device Status** pane to learn if the card is working properly. However, if there's an error message shown, please choose **Uninstall** from the opened menu while right-clicking over the Cardbus item, to which a red or yellow icon is attached beside, in the **Device Manager** dialog box. Then restart your system and go through the installation procedures again.

The following picture indicates a successful installation of the 802.11b/g WLAN Cardbus.

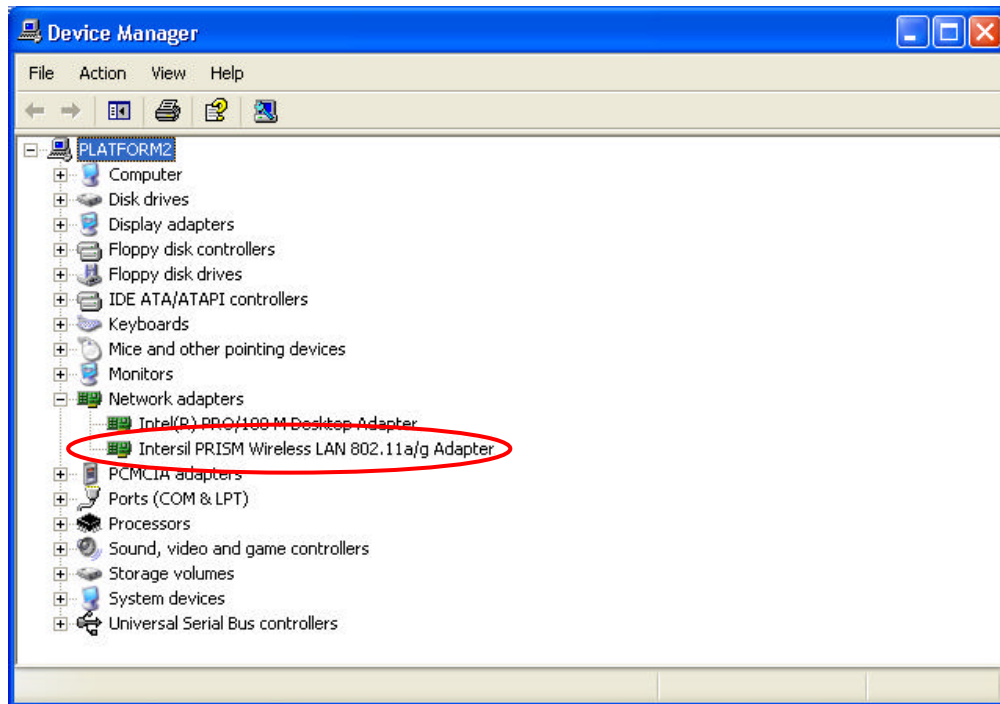


Figure 2-11: The **Device Manager** Dialog Box

## PRISM CONFIGURATION UTILITY BASICS

Once you insert your 802.11b/g WLAN Cardbus, it will operate with the factory default settings. However, you may configure the desired settings by double-clicking the **PRISM Wireless Settings** icon on the system tray. In the prompted **PRISM Wireless Settings** dialog box, there are six tabs, including **Status**, **Configuration**, **Encryption**, **IBSS**, **Domain**, and **About**, proffering various functions to assist you in configuring the connection to the networks.

This chapter is divided into the two sections: [Right-Click Menu of the Tray Icon](#) and [The Utility Basics](#). Please refer to the preferred topic to obtain more information and enjoy vast advantages **PRISM Configuration Utility** brings.

### 3.1 Right -Click Menu of the Tray Icon

Right-clicking the **PRISM Configuration Utility** icon in the system tray will open a menu as the following picture:

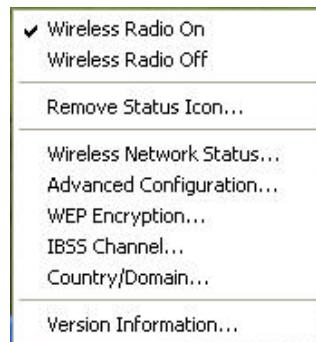


Figure 3-1: Right-Click Menu of the Tray Icon

Check the descriptions below to obtain detailed information about each command in the menu.

#### Wireless Radio On

Choose the **Wireless Radio On** command to receive the radio frequency signal.

#### Wireless Radio Off

Choosing the **Wireless Radio Off** command will stop receiving the radio frequency signal.

#### Remove Status Icon

If you do not wish to have the **PRISM Configuration Utility** icon displayed in the system tray, choose this command to open the **Remove Wireless Status Icon** dialog box, and then choose **Yes** to have the icon disappeared. The icon will reappear next time when you restart the computer. If you intend to remove it permanently, put a tick in the checkbox next to the **Remove Status Icon Permanently** option. To launch the utility hereafter, click **Start** on the taskbar, choose **Program** from the menu, and then point to **PRISM Configuration Utility** from the submenu of **WLAN PRISM**

**Utility.** Clicking **No** will undo the removal.



Figure 3-2: The **Remove Wireless Status Icon** Dialog Box

## **Wireless Network Status**

Choose this command to launch the **Status** tab of the **PRISM Wireless Settings** dialog box. For more details about the tab, please refer to **The Status Tab** in **The Utility Basics** section below.

## **Advanced Configuration**

Choose this command to launch the **Configuration** tab of the **PRISM Wireless Settings** dialog box. Please refer to **The Configuration Tab** in **The Utility Basics** section below to gain more information about the tab.

## **WEP Encryption**

Choose this command to launch the **Encryption** tab of the **PRISM Wireless Settings** dialog box. This tab offers you a number of options to maintain the secure management in a wireless LAN environment. See the explanations in **The Encryption Tab** of **The Utility Basics** section below for more details.

## **IBSS Channel**

Choosing this command will launch the **IBSS** tab of the **PRISM Wireless Settings** dialog box. To obtain more information about the tab, please refer to **The IBSS Tab** in **The Utility Basics** section below.

## **Country/Domain**

Choosing this command will launch the **Domain** tab of the **PRISM Wireless Settings** dialog box. Detailed information about this tab is presented in **The Domain Tab** of **The Utility Basics** section.

## **Version Information**

Choosing this command will launch the **About** tab of the **PRISM Wireless Settings** dialog box. The **About** tab reveals general information on your 802.11gb WLAN Cardbus, including the release

version of driver and the **PRISM Configuration Utility** and the card's MAC Address.

### 3.2 The Utility Basics

When you double-click the **PRISM Configuration Utility** tray icon, the **PRISM Wireless Settings** dialog box will be prompted as the picture shown below. The application is a window-based program, which is consisted of four tabs, including **Status**, **Configuration**, **Encryption**, **IBSS**, **Domain**, and **About**.

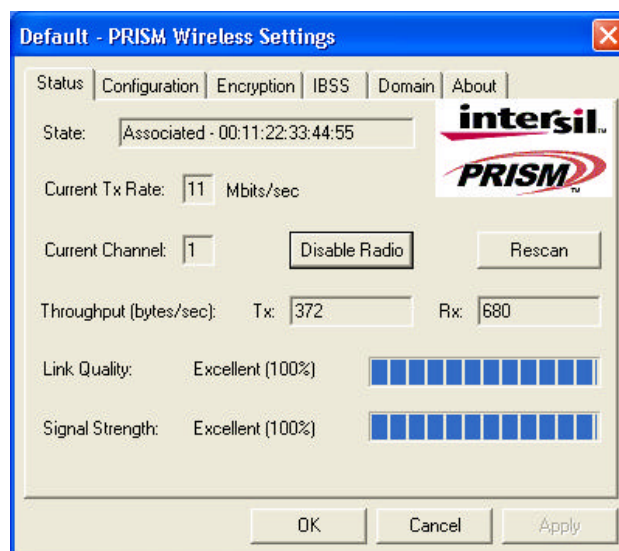


Figure 3-3: The **PRISM Wireless Settings** Dialog Box

Check the desired items below to obtain more information about these tabs.

#### The Status Tab

In the **PRISM Wireless Settings** dialog box, click the **Status** tab, and you will see the following display. Here presents the status of your current connection. To close the window, click **OK**.

**Note:** Choosing the **Wireless Network Status** command from the right-click menu of **PRISM Configuration Utility** tray icon will launch this tab too.



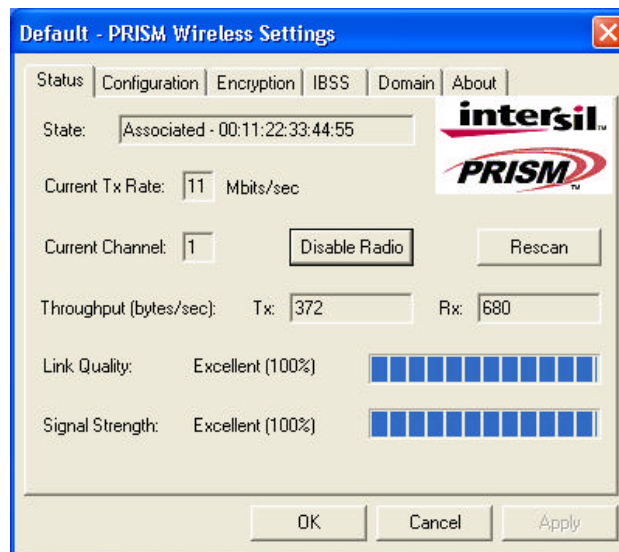


Figure 3-4: The **Status** Tab

**Note:** The texts before "PRISM Wireless Settings" in the caption bar of the dialog box is the profile name of the current connection. Thus, the caption contexts vary according to the connectivity at the given time.

From the window, the general information on the status of currently connected entry is presented. You may want to click the **Rescan** button to reinitiate the scanning process and update the status. Later the result of scanning will be renewed and displayed in the window. If you wish to stop the networking connection, click the **Disable Radio** button to stop scanning. However, if you are already in the disabled radio mode, you will find the **Enable Radio** button here instead. Click **Enable Radio** to regain the link then.

### State

Here displays the MAC Address of the current associated entry, which could be a connected access point in the Infrastructure mode or computers joining in the Ad-Hoc network.

### Current Tx Rate

This feature indicates the transmission rate of the current connection.

### Current Channel

Here reveals the current channel operated in the wireless network. Note that the channel number differs as the radio scans any available channels in the Infrastructure mode.

### Throughout (bytes/sec)

This feature indicates the rates of transmitting (**Tx**) and receiving (**Rx**) data package of your 802.11b/g WLAN Cardbus within a short period of time; thus, the values vary on a time basis.

## Link Quality

**Link Quality** is based on the percentage of successfully transmitted or received signal of the associated access point beacon within a limited period. The higher the percentage, the better the link quality. The bar graph beside also provides a visual interpretation of the current link quality. It is noted that the **Link Quality** and **Signal Strength** features only apply to the Infrastructure mode. They are inapplicable in the Ad-Hoc mode since data will be transferred from many different computers.

## Signal Strength

You may learn the received signal strength of the baseband processor of the beacon signal from the **Signal Strength** bar beside, and it's also presented in terms of percentage. As the signal gets stronger, the signal percentage rate gets higher. It is noted that the **Signal Strength** and **Link Quality** features only apply to the Infrastructure mode. They are inapplicable in the Ad-Hoc mode since data will be transferred from many different computers.

## **The Configuration Tab**

Click this tab to edit different profiles for different network configurations. When finish changing the settings, please click **Apply** to perform the new configuration at last.

**Note:** Choosing the **Advanced Configuration** command from the right-click menu of **PRISM Configuration Utility** tray icon will launch this tab too.

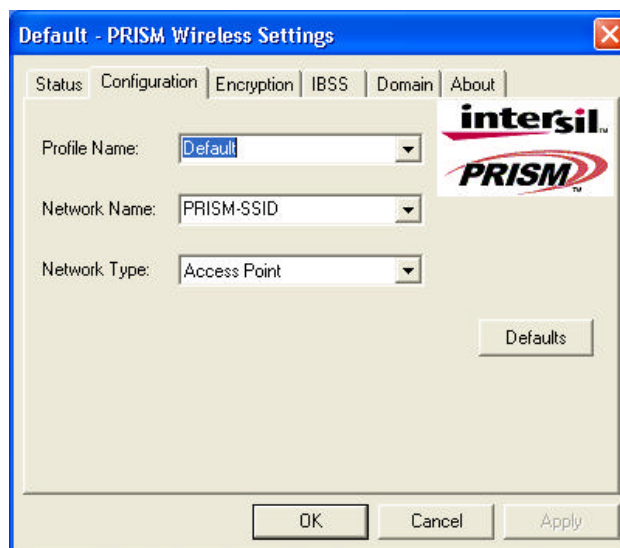


Figure 3-5: The **Configuration** Tab

## Profile Name

Enter texts in the **Profile Name** field to identify a new profile. After defining the configurations below, click the **Apply** button to establish the profile. To switch between any existing profiles,

simply click the arrow button at the right of the **Profile Name** field to open the pull-down menu and then select the intended one from it.

**Note:** You will have at least one profile named **ANY**, which allows a link with an Access Point or a Wireless LAN PC Card equipped computer at the given time. When you click the **Defaults** button under the tab, a profile of the current connection is created.

### **Network Name**

**Network Name**, also known as SSID (**S**ervice **S**et **I**dentifier), must be unique to distinguish itself as a particular wireless network, while all wireless points in this network area share the same SSID. Type the identical SSID in the **Network Name** field to associate with access points or stations within the specified wireless LAN. To change the **Network Name**, highlight the name in the box, edit a new SSID, and then click **Apply** to save the changes.

### **Network Type**

Two network types are offered here: **Access Point** and **Peer-to-Peer**. Choose the intended type from the two options. The **Access Point** mode, which is also known as the Infrastructure mode, allows you to communicate with a wired network via an access point. If you attempt to operate this mode, you must indicate the identical **Network Name** to make a communication with the intended access point. On the other hand, the **Peer-to-Peer** mode provides you with the so-called Ad-Hoc communication, which means each wireless-equipped computers within a group is able to connect with each other as an independent wireless LAN without the use of an access point. Each station within this Ad-Hoc network has to define the same **Network Name**.

### **The Encryption Tab**

Click the **Encryption** tab to define the encryption settings for a specific profile. It offers you various options concerning the so-called WEP (**W**ired **E**quivalent **P**rivacy) to maintain the secure management in a wireless LAN environment. See the explanations below for more details, and before making an activation of any new settings, click **Apply**. To leave the window, click **OK**. To undo the new settings, select the **Cancel** button.

**Note:** Choosing the **WEP Encryption** command from the right-click menu of **PRISM Configuration Utility** tray icon will launch this tab too.

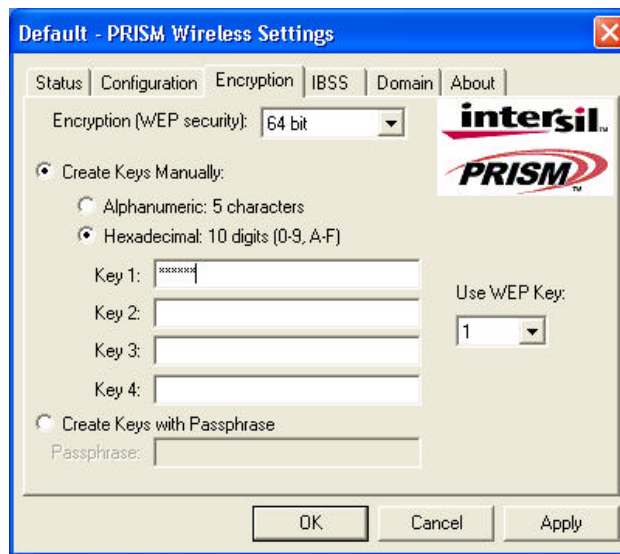


Figure 3-6: The **Encryption** Tab

### Encryption (WEP security)

If you choose **Disabled** from the pull-down list, you will have the 802.11b/g WLAN Cardbus communicated with all stations within the same networking community without any data encryption. Otherwise, two key lengths are offered: **64 bit** and **128 bit**. Specify a preferred one from the two, so that you may use the identical WEP key to make a communication with the chosen access point.

### Create Key Manually

Once you set the **Encryption** type as **64 bit** or **128 bit**, you may choose to edit WEP keys manually or create them via the passphrase of your wireless network. If you choose the **Create Key Manually** option, you may directly enter up to 4 WEP keys for use in WEP encryption. To generate the WEP keys, please define the key entry method as **Alphanumeric** or **Hexadecimal** (for hexadecimal characters, only digits 0-9 and letters AF are valid). Then edit the texts in the blank fields below, from **Key 1** to **Key 4**, as the encryption codes. Note that these codes/keys shall be identical between the wireless nodes within the range and the access point only. Check the table below to find valid key length of each encryption type:

	64 bit	128 bit
<b>Alphanumeric</b>	5 characters	13 characters
<b>Hexadecimal</b>	10 digits	26 digits

### Use WEP Key

Indicate which WEP key you intend to apply to activate the WEP encryption from the pull-down menu. Make sure that the intended access point on the wireless network shares the same keys.

By default, **Key 1** will be used.

### Create Keys with Passphrase

Choose this command when the associated wireless network uses a passphrase to create WEP keys. Enter the passphrase string in the **Passphrase** field to generate four encryption keys in the **Key** fields above. Note that only letters A-F are valid for the **Passphrase** feature.

After finish configuring the **Encryption** features, remember to click the **Apply** button to initiate the new settings.

### The IBSS Tab

If you, as a creator of the wireless network, are communicating with other stations via the IBSS (802.11 Ad-hoc) mode to form peer-to-peer networks, click the **IBSS** (Independent **B**asic **S**ervice **S**et) tab to specify an operating radio frequency channel from the pull-down list under the **IBSS Channel Selection** section.

**Note:** Choosing the **IBSS Channel** command from the right-click menu of **PRISM Configuration Utility** tray icon will launch this tab too.

Note that the available channels differ from country to country, and the channel number must be the same between the entries/stations within the range, so that each can communicate with each other. Or you may simply click **Defaults** to automatically determine the channel number for you. When done, click **Apply** to activate the new configuration.

On the other hand, while in the **Access Point** mode, you will find the channel number is the same as the associated access point. Thus, there's no need to manually set the value.

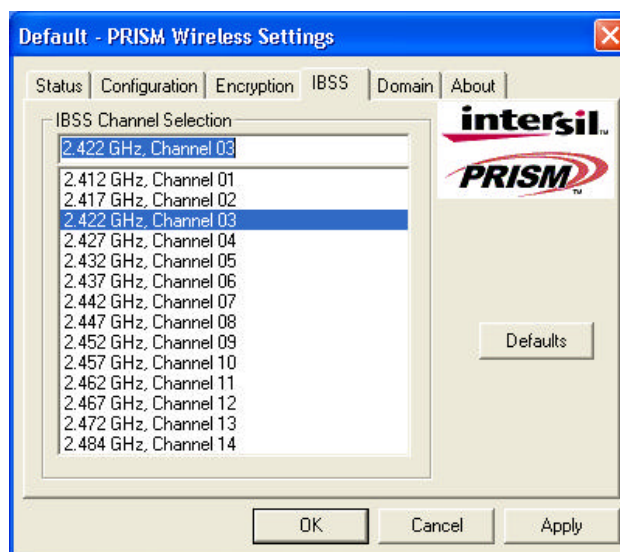


Figure 3-7: The IBSS Tab

## The Domain Tab

While in the 2.4GHz range, the network operation may differ from country to country, or domain to domain. This is because the 802.11d protocol was established. To have the operation normally processed, choose the **Domain** tab to change relevant settings.

**Note:** Choosing the **Country/Domain** command from the right-click menu of **PRISM Configuration Utility** tray icon will launch this tab too.

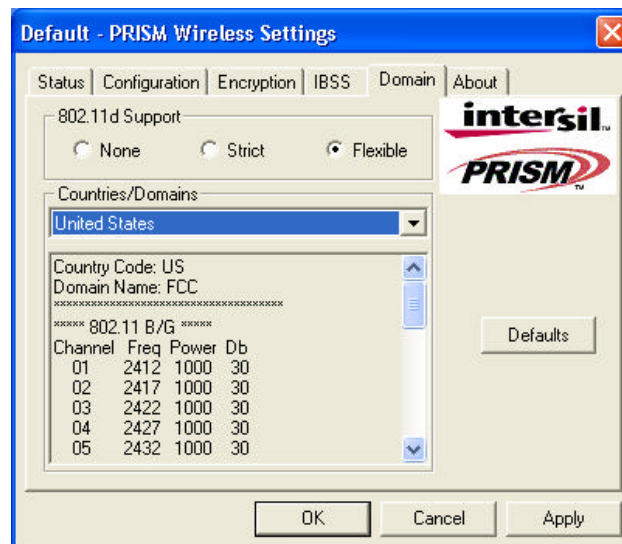


Figure 3-8: The **Domain** Tab

## 802.11d Support

**802.11d Support** lets you operate multi-country roaming. To automatically adjust regulatory domain while operating network in different countries, choose either **Strict** or **Flexible** according to your need. If you choose **None**, the task will be terminated.

## Countries/Domains

Define the regulatory domain from the drop-down menu of this command according to the country you are located in. More detailed information about the defined country/domain will be listed below afterwards.

When you are done, remember to click **Apply** to let the new settings take effect.

## The About Tab

This tab reveals general information on your 802.11b/g WLAN Cardbus, including the following items:

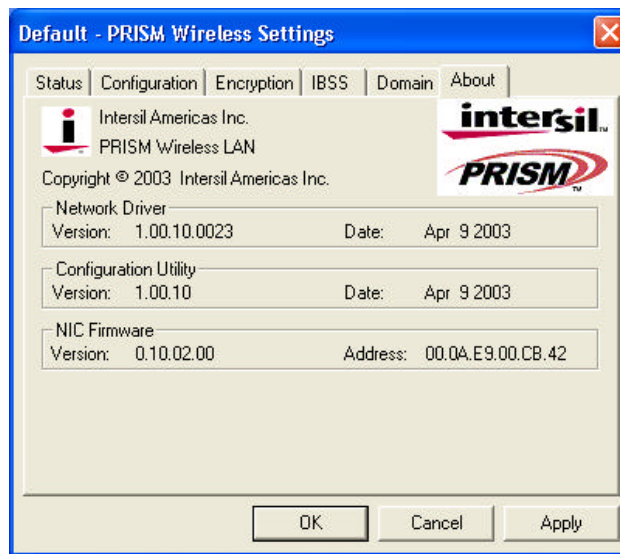


Figure 3-9: The **About** Tab

### **Network Driver**

Displays the current version and released date of the 802.11b/g WLAN Cardbus' driver.

### **Configuration Utility**

Displays the current version and released date of the **PRISM Configuration Utility** application.

### **NIC Firmware**

Displays the current NIC card firmware version and the MAC (Media Access Control) address of your wireless card. It is consisted of 12-digit hexadecimal numbers (48 bits in length) to identify your computer's physical address on the local area network.

## APPENDIX A: TROUBLESHOOTING

This section provides solutions to problems that you might encounter during the installation and operation of your 802.11b/g WLAN Cardbus. Please refer to the desired topics below and read the description to solve your problems.

### Disable 802.11b/g WLAN Cardbus

Supposed you do not need the 802.11b/g WLAN Cardbus to establish the wireless connectivity for any reason, you can directly unplug and remove your 802.11b/g WLAN Cardbus from the Cardbus slot on your computer, or click **Disable Radio** on the **Status** tab of the **PRISM Wireless Settings** dialog box. Once the device is removed, the connection to the network stops. Thus, be sure that you have closed all the network applications before processing the removal.

### Uninstall PRISM Configuration Utility and the Card's Driver

Prior to starting uninstalling, please make sure that the utility is closed, and then go along with the procedures below to entirely uninstall **PRISM Configuration Utility** and the card driver.

1. Right-click the **My Computer** desktop icon and choose **Properties** from the opened menu.
2. In the **System Properties** dialog box, choose **Device Manager** if you are under Windows 98 or Me. If you are operating Windows 2000 or XP, click the **Hardware** tab, and then choose the **Device Manager** button.
3. In the opened window, expand **Network adapters** to find the input device – **Intersil PRISM Wireless LAN 802.11a/g Adapter**. Right-click over the item and choose **Uninstall**.
4. Then follow the on-screen instructions to completely remove the drivers.

### 802.11b/g WLAN Cardbus Does Not Work Properly

If this happens, follow the guidelines below.

- Unplug and replug the 802.11b/g WLAN Cardbus into your PC's Cardbus slot.
- Right-click the **My Computer** desktop icon and choose **Properties** to open the **System Properties** dialog box. If you are under Windows 98 or Me, choose the **Device Manager** tab, or if your system is Windows 2000 or XP, click the **Hardware** tab, and then choose the **Device Manager** button. In the opened window, find your Cardbus to see if the installation is successful. If you see a yellow exclamation mark beside the item, please go along with the steps below to reinstall the drivers:
  1. Uninstall the software and hardware drivers from your PC. (Please refer to the previous topic for details)



2. Restart your computer and repeat the installation procedures as indicated in [Chapter 2: Installation](#).
3. When finished, open the **Device Manager** window again to verify if the installation is approved. The yellow exclamation mark shall be removed for this time.

## APPENDIX B: SPECIFICATIONS

<b>Product Name</b>	<b>802.11b/g WLAN Cardbus Adapter</b>
<b>Host Interface</b>	32-bit Cardbus
<b>Standards</b>	IEEE 802.11, IEEE 802.11b, IEEE 802.11g
<b>Frequency Band</b>	2.400 ~ 2.4835GHz (subject to local regulations)
<b>Current Drain</b>	Power save mode=22mA, Standby mode=7mA, Transmit mode=460mA, Receive mode=410mA
<b>Spreading</b>	DSSS (11b), OFDM (11g)
<b>Data Rate</b>	1Mbps, 2Mbps, 5.5Mbps, 6Mbps, 9Mbps, 11Mbps, 12Mbps, 18Mbps, 24Mbps, 36Mbps, 48Mbps, 54Mbps
<b>Transmit Power</b>	802.11b 17 ±1dBm 802.11g 17dBm 6,9Mbps 17dBm 12,18Mbps 15dBm 24Mbps 14dBm 36Mbps 14dBm 48Mbps 12dBm 54Mbps 12dBm
<b>Receive Sensitivity</b>	802.11b 8% FER@1Mbps -91dBm 8% FER@2Mbps -88dBm 8% FER@5.5Mbps -85dBm 8% FER@11Mbps -83dBm 802.11g 10% PER@6Mbps -88dBm 10% PER@9Mbps -87dBm 10% PER@12Mbps -84dBm 10% PER@18Mbps -82dBm 10% PER@24Mbps -79dBm 10% PER@36Mbps -75dBm 10% PER@48Mbps -69dBm 10% PER@54Mbps -68dBm
<b>Modulation</b>	CCK (11b), BPSK, QPSK, 16-QAM, 64-QAM (11g)
<b>Security</b>	64/128 bit WEP Encryption 802.1x WPA

<b>Internal Antenna Type</b>	Dual Antenna Diversity Switching
<b>Media Access Control</b>	RF activity
<b>Supplied Driver</b>	CSMA/CA with ACK
<b>Warranty</b>	1 year
<b>Temperature Range</b>	0~55°C (Operating)
<b>Humidity</b>	Max. 95% Non-condensing
<b>Operating Range</b>	Open Space: up to 400m eters; Indoor: up to 100meters The transmission speed varies in the surrounding environment.
<b>CIS</b>	Customer Define