

Manual
UNIHAN
UPWL6028F

Federal Communication Commission Interference Statement

This equipment has been tested and found to comply with the limits for a Class B digital device, pursuant to Part 15 of the FCC Rules. These limits are designed to provide reasonable protection against harmful interference in a residential installation. This equipment generates, uses and can radiate radio frequency energy and, if not installed and used in accordance with the instructions, may cause harmful interference to radio communications. However, there is no guarantee that interference will not occur in a particular installation. If this equipment does cause harmful interference to radio or television reception, which can be determined by turning the equipment off and on, the user is encouraged to try to correct the interference by one or more of the following measures:

- i. Reorient or relocate the receiving antenna.
- ii. Increase the separation between the equipment and receiver.
- iii. Connect the equipment into an outlet on a circuit different from that to which the receiver is connected.
- iv. Consult the dealer or an experienced radio/TV technician for help.

This device complies with Part 15 of the FCC Rules. Operation is subject to the following two conditions:

- i. This device may not cause harmful interference, and
- ii. this device must accept any interference received, including interference that may cause undesired operation.

For product available in the USA/Canada market, only channel 1~11 can be operated. Selection of other channels is not possible.

This device is restricted to indoor use only.

Safety statements

Regulatory Information/Disclaimers

Installation and use of this Bluetooth device must be in strict accordance with the instructions included in the user documentation provided with the product. Any changes or modifications (including the antennas) made to this device that are not expressly approved by the manufacturer may void the user's authority to operate the equipment. The manufacturer is not responsible for any radio or television interference caused by unauthorized modification of this device, or the substitution of the connecting cables and equipment other than manufacturer specified. It is the responsibility of the user to correct any interference caused by such unauthorized modification, substitution or attachment. Manufacturer and its authorized resellers or distributors will assume no liability for any damage or violation of government regulations arising from failing to comply with these guidelines.

CAUTION! This equipment complies with FCC radiation exposure limits set forth for an uncontrolled environment. This equipment should be installed and operated with minimum distance 20cm between the radiator & your body.

You are cautioned that changes or modifications not expressly approved by the party responsible for compliance could void your authority to operate the equipment. Reprinted from the Code of Federal Regulations #47, part 15.193, 1993. Washington DC: Office of the Federal Register, National Archives and Records Administration, U.S. Government Printing Office.

CAUTION! Any changes or modifications not expressly approved by the party responsible for compliance could void the user's authority to operate this equipment.

The final end product must be labeled in a visible area with the following " Contains TX FCC ID: UPWL6028F".

IC

This device complies with Industry Canada licence-exempt RSS standard(s). Operation is subject to the following two conditions: (1) this device may not cause interference, and (2) this device must accept any interference, including interference that may cause undesired operation of the device.

IC Radiation Exposure Statement:

This equipment complies with IC RSS-102 radiation exposure limits set forth for an uncontrolled environment. This equipment should be installed and operated with minimum distance 20cm between the radiator & your body.

This transmitter module is authorized only for use in device where the antenna may be installed such that 20 cm may be maintained between the antenna and users. The final end product must be labeled in a visible area with the following: "Contains transmitter module IC: 7582A-UPWL6028F".

This device and its antenna(s) must not be co-located or operating in conjunction with any other antenna or transmitter.

The device for the band 5150-5250 MHz is only for indoor usage to reduce potential for harmful interference to co-channel mobile satellite systems.

This radio transmitter (identify the device by certification number, or model number if Category II) has been approved by Industry Canada to operate with the antenna types listed below with the maximum permissible gain and required antenna impedance for each antenna type indicated. Antenna types not included in this list, having a gain greater than the maximum gain indicated for that type, are strictly prohibited for use with this device.

Accessories				
Antenna	Brand Name	Part Number	Gain _i (dB)	TYPE
Antenna 1	Wanshih	UC3WFI0064	2.73	PCB
Antenna 2	Wanshih	UC3WFI0073	3.13	PCB
Antenna 3	Honglin	260-23396	2.00	PCB
Antenna 4	Honglin	260-23397	1.90	PCB
Antenna 5	Honglin	260-23402	2.00	PCB
Antenna 6	Honglin	260-23403	1.93	PCB
Antenna 7	Honglin	260-23433	1.86	PCB
Antenna 8	Honglin	260-23435	2.00	PCB
Antenna 9	ACON	APP6P-701244	2.00	PCB
Antenna 10	ACON	APP6P-701246	1.21	PCB
Antenna 11	Honglin	290-30180	1.90	PCB
Antenna 12	Honglin	290-30181	2.00	PCB
Antenna 13	Honglin	260-26031	2.29	PCB
Antenna 14	Honglin	260-26030	2.29	PCB
Antenna 15	Honglin	260-26036	2.62	PCB
Antenna 16	Honglin	290-30012	2.62	PCB
Antenna 17	Honglin	260-26037	2.62	PCB

■ System requirements

Before installing the PEGATRON WIFI module, make sure that your system meets the following requirements:

- Intel® Pentium® 4 or AMD K7/K8 system
- Minimum 64MB system memory
- Windows® XP/VISTA operating system
- An available USB port (USB 2.0 recommended because USB 1.1 cannot achieve maximum wireless performance)

■ Installing the device drivers

To install the device driver in your computer:

Insert the support CD to the optical drive and follow the following procedure.

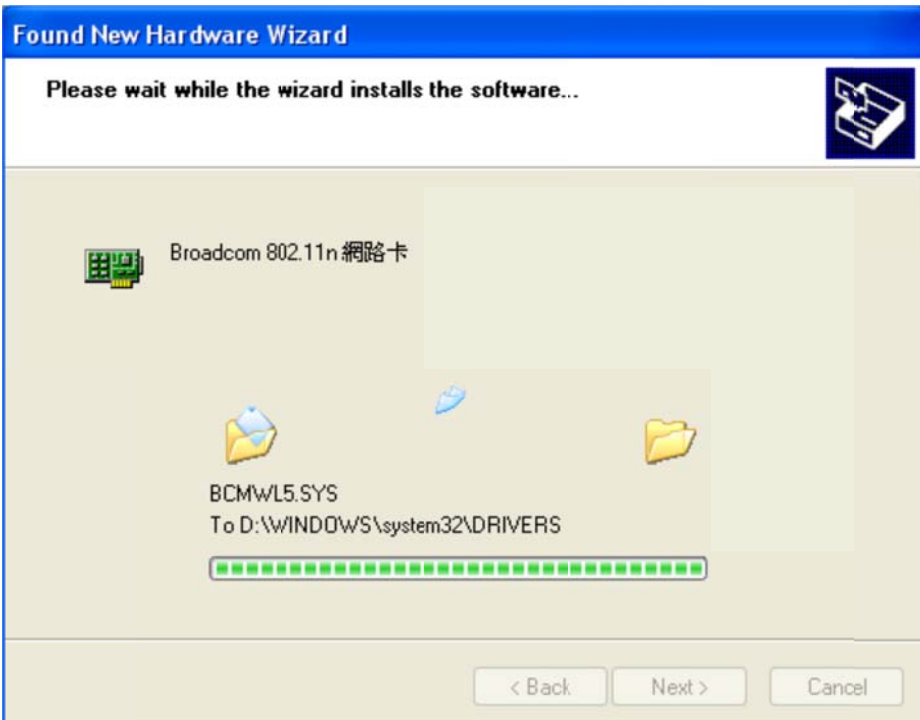
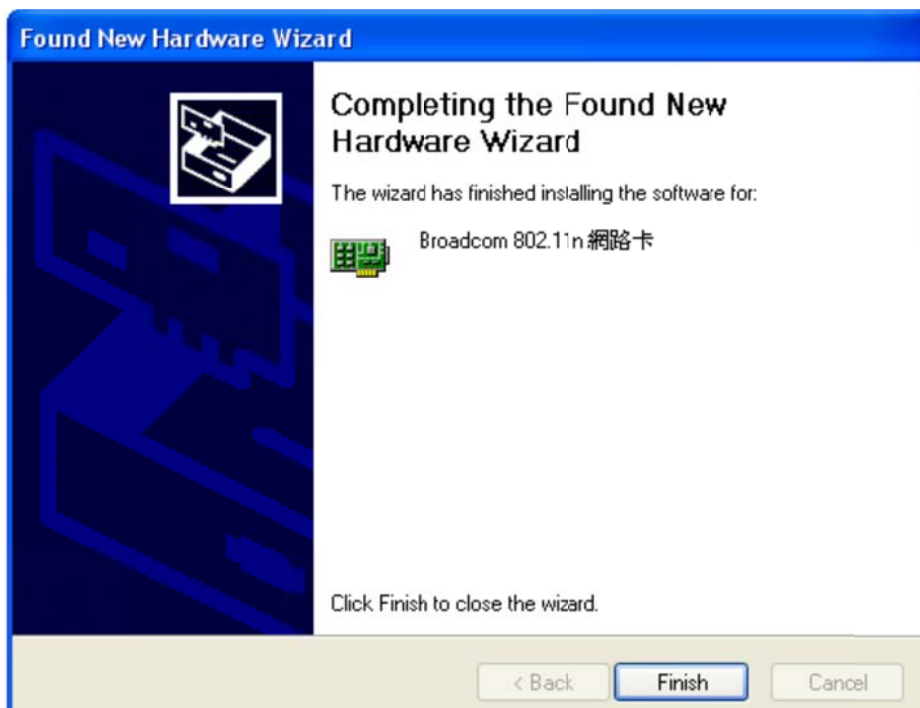
	<p>Step1. Click the “Next” button.</p>
---	--

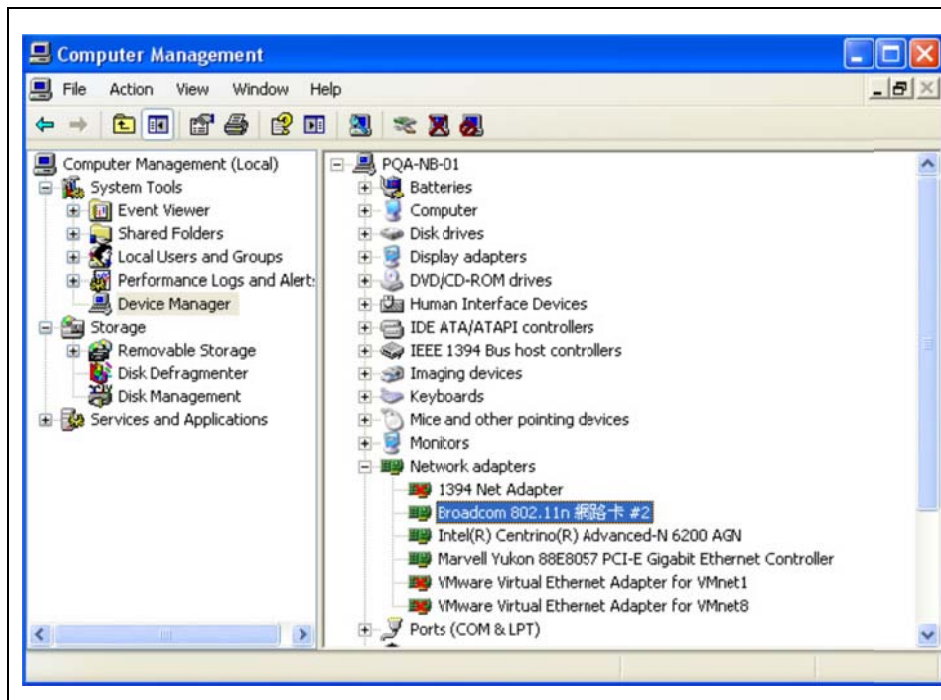


Step2. Browse the file path and click the "Next" button.



Step3. Click the "Continue Anyway" button.

 <p>The screenshot shows the 'Found New Hardware Wizard' window. The title bar is blue with the text 'Found New Hardware Wizard'. Below the title bar, a message says 'Please wait while the wizard installs the software...'. On the right side of this message is a small icon of a network card. The main area of the window is light beige and contains a green circuit board icon labeled 'Broadcom 802.11n 網路卡'. Below this, there are three yellow folder icons. The first folder is labeled 'BCMWL5.SYS' and 'To D:\WINDOWS\system32\DRIVERS'. A progress bar with green segments is shown below the folder names. At the bottom of the window are three buttons: '< Back', 'Next >', and 'Cancel'.</p>	<p>Step4. Installing.</p>
 <p>The screenshot shows the 'Found New Hardware Wizard' window at the completion stage. The title bar is blue with the text 'Found New Hardware Wizard'. On the left side, there is a large blue graphic with a white network card icon. To the right of this graphic, the text reads 'Completing the Found New Hardware Wizard'. Below this, it says 'The wizard has finished installing the software for:' followed by a green circuit board icon and the text 'Broadcom 802.11n 網路卡'. At the bottom of the main area, it says 'Click Finish to close the wizard.' At the bottom of the window are three buttons: '< Back', 'Finish' (which is highlighted with a blue border), and 'Cancel'.</p>	<p>Step5. Click the “Finish” button.</p>



Step6.
When you
successfully
finish the
installation,
the computer
management
will detect the
device.