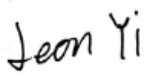



# TEST REPORT

**Product Name** : Smart Motion Sensor  
**Brand Name** : Haozee  
**Model** : HZ-PIR-01  
**Series Model** : ZG-PIR  
**FCC ID** : 2BOUN-HZ-PIR-01  
**Applicant** : SHENZHEN HAI HAO ELECTRONIC CO.,LTD  
**Address** : 507B,Building A,Zhi Hui Chuang Xin Zhong Xin,Qian jin 2  
lu,Xixiang Street,BaoAn District,Shenzhen, China  
**Manufacturer** : SHENZHEN HAI HAO ELECTRONIC CO.,LTD  
**Address** : 507B,Building A,Zhi Hui Chuang Xin Zhong Xin,Qian jin 2  
lu,Xixiang Street,BaoAn District,Shenzhen, China  
**Standard(s)** : FCC CFR Title 47 Part 15 Subpart C Section 15.247  
**Date of Receipt** : Mar. 28, 2025  
**Date of Test** : Mar. 29, 2025~ Apr. 14, 2025  
**Issued Date** : Apr. 14, 2025

**Issued By:** Guangdong Asia Hongke Test Technology Limited  
B1/F, Building 11, Junfeng Industrial Park, Chongqing Road, Heping Community, Fuhai Street,  
Bao'an District, Shenzhen, Guangdong, China  
Tel.: +86 0755-230967639 Fax.: +86 0755-230967639

**Reviewed by:**   
Leon.yi

**Approved by:**   
Sean She



Note: This device has been tested and found to comply with the standard(s) listed, this test report merely corresponds to the test sample. It is not permitted to copy extracts of these test result without the written permission of the test laboratory. This report shall not be reproduced except in full, without the written approval of Guangdong Asia Hongke Test Technology Limited. If there is a need to alter or revise this document, the right belongs to Guangdong Asia Hongke Test Technology Limited, and it should give a prior written notice of the revision document. This test report must not be used by the client to claim product endorsement.



**Report Revise Record**

Report Version	Issued Date	Notes
M1	Apr. 14, 2025	Initial Release

# Contents

<b>1</b>	<b>TEST SUMMARY.....</b>	<b>4</b>
1.1	TEST STANDARDS .....	4
1.2	TEST SUMMARY .....	4
1.3	TEST FACILITY .....	5
1.4	MEASUREMENT UNCERTAINTY .....	5
<b>2</b>	<b>GENERAL INFORMATION .....</b>	<b>6</b>
2.1	ENVIRONMENTAL CONDITIONS.....	6
2.2	GENERAL DESCRIPTION OF EUT .....	6
2.3	DESCRIPTION OF TEST MODES AND TEST FREQUENCY .....	7
2.4	SPECIAL ACCESSORIES .....	7
2.5	EQUIPMENT LIST FOR THE TEST.....	7
<b>3</b>	<b>TEST CONDITIONS AND RESULTS.....</b>	<b>9</b>
3.1	CONDUCTED EMISSIONS TEST.....	9
3.2	RADIATED EMISSIONS AND BAND EDGE .....	11
3.3	MAXIMUM PEAK CONDUCTED OUTPUT POWER.....	18
3.4	POWER SPECTRAL DENSITY .....	19
3.5	6dB BANDWIDTH .....	20
3.6	OUT-OF-BAND EMISSIONS .....	21
3.7	ANTENNA REQUIREMENT.....	22
<b>4</b>	<b>TEST SETUP PHOTOGRAPHS OF EUT .....</b>	<b>23</b>
<b>5</b>	<b>PHOTOS OF EUT .....</b>	<b>24</b>

# 1 TEST SUMMARY

## 1.1 Test Standards

The tests were performed according to following standards:

[FCC Rules Part 15.247](#): Frequency Hopping, Direct Spread Spectrum and Hybrid Systems that are in operation within the bands of 902-928 MHz, 2400-2483.5 MHz, and 5725-5850 MHz

[ANSI C63.10: 2013](#): American National Standard for Testing Unlicensed Wireless Devices

[KDB558074 D01 15.247 Meas Guidance v05r02](#): Guidance for Compliance Measurements on Digital Transmission System, Frequency Hopping Spread Spectrum System, and Hybrid System Devices Operating Under Section 15.247 of the FCC Rules

## 1.2 Test Summary

Test Item	Section in 47 CFR	Result
Antenna requirement	§15.203	Pass
On Time and Duty Cycle	/	/
AC Power Line Conducted Emission	§ 15.207(a)	N/A
Conducted Peak Output Power	§15.247 (b)(3)	Pass
Channel Bandwidth	§15.247 (a)(2)	Pass
Power Spectral Density	§15.247 (e)	Pass
Transmitter Radiated Spurious Emission	§15.205/15.209	Pass
Restricted Bands	§15.205/15.209	PASS
Conducted Unwanted emissions and Bandedge	§15.205, §15.247(d)	Pass

### 1.3 Test Facility

#### Test Laboratory:

**Guangdong Asia Hongke Test Technology Limited**

B1/F, Building 11, Junfeng Industrial Park, Chongqing Road, Heping Community, Fuhai Street, Bao'an District, Shenzhen, Guangdong, China

The test facility is recognized, certified or accredited by the following organizations:

**FCC-Registration No.: 251906 Designation Number: CN1376**

Guangdong Asia Hongke Test Technology Limited has been registered and fully described in a report filed with the (FCC) Federal Communications Commission. The acceptance letter from the FCC is maintained in our files.

**IC —Registration No.: 31737 CAB identifier: CN0165**

The 3m Semi-anechoic chamber of Guangdong Asia Hongke Test Technology Limited has been registered by Certification and Engineering Bureau of Industry Canada for radio equipment testing with Registration No.: 31737

**A2LA-Lab Cert. No.: 7133.01**

Guangdong Asia Hongke Test Technology Limited has been accredited by A2LA for technical competence in the field of electrical testing, and proved to be in compliance with ISO/IEC 17025: 2017 General Requirements for the Competence of Testing and Calibration Laboratories and any additional program requirements in the identified field of testing.

### 1.4 Measurement uncertainty

The data and results referenced in this document are true and accurate. The reader is cautioned that there may be errors within the calibration limits of the equipment and facilities. The measurement uncertainty was calculated for all measurements listed in this test report according to CISPR 16 - 4 "Specification for radio disturbance and immunity measuring apparatus and methods – Part 4: Uncertainty in EMC Measurements" and is documented in the Guangdong Asia Hongke Test Technology Limited's quality system according to DIN EN ISO/IEC 17025. Furthermore, component and process variability of devices similar to that tested may result in additional deviation. The manufacturer has the sole responsibility of continued compliance of the device.

Hereafter the best measurement capability for Asia Hongke laboratory is reported:

Test	Measurement Uncertainty	Notes
Power Line Conducted Emission	9KHz~30MHz $\pm 1.20$ dB	(1)
Radiated Emission	9KHz~30MHz $\pm 3.10$ dB	(1)
Radiated Emission	30MHz~1GHz $\pm 3.75$ dB	(1)
Radiated Emission	1GHz~18GHz $\pm 3.88$ dB	(1)
Radiated Emission	18GHz~40GHz $\pm 3.88$ dB	(1)
RF power, conducted	30MHz~6GHz $\pm 0.16$ dB	(1)
RF power density, conducted	$\pm 0.24$ dB	(1)
Spurious emissions, conducted	$\pm 0.21$ dB	(1)
Temperature	$\pm 1^{\circ}\text{C}$	(1)
Humidity	$\pm 3\%$	(1)
DC and low frequency voltages	$\pm 1.5\%$	(1)
Time	$\pm 2\%$	(1)
Duty cycle	$\pm 2\%$	(1)

The report uncertainty of measurement  $y \pm U$ , where expended uncertainty  $U$  is based on a standard uncertainty Multiplied by a coverage factor of  $k=2$ , providing a level of confidence of approximately 95%.

## 2 GENERAL INFORMATION

### 2.1 Environmental conditions

During the measurement the environmental conditions were within the listed ranges:

Normal Temperature:	25°C
Relative Humidity:	55 %
Air Pressure:	101 kPa

### 2.2 General Description of EUT

Product Name:	Smart Motion Sensor
Model/Type reference:	HZ-PIR-01
Serial Model:	ZG-PIR
Power Supply:	DC 3.0V from battery
Hardware Version:	N/A
Software Version:	N/A
Sample(s) Status:	AiTSZ-250328008-1(Normal sample) AiTSZ-250328008-2(Engineer sample)
<b>Zigbee:</b>	
Modulation:	OQPSK (DSSS)
Operation frequency:	2405MHz ~ 2480MHz
Channel number:	16
Channel separation:	5MHz
Antenna type:	PCB Antenna
Antenna gain:	1.08 dBi

**Remark:**

The above DUT's information was declared by manufacturer. For more detailed features description, please refer to the manufacturer's specifications or the User's Manual..

## 2.3 Description of Test Modes and Test Frequency

There are 16 channels provided to the EUT and Channel 11/18/26 were selected to test.

### Operation Frequency List:

Channel	Frequency	Channel	Frequency
<b>11</b>	<b>2405 MHz</b>	19	2445 MHz
12	2410 MHz	20	2450 MHz
13	2415 MHz	21	2455 MHz
14	2420 MHz	22	2460 MHz
15	2425 MHz	23	2465 MHz
16	2430 MHz	24	2470 MHz
17	2435 MHz	25	2475 MHz
<b>18</b>	<b>2440 MHz</b>	<b>26</b>	<b>2480 MHz</b>

Note: The line display in grey were the channel selected for testing

### Power setting during the test:

During testing, Channel & Power Controlling Software provided by the customer was used to control the operating channel as well as the output power level. The RF output power selection is for the setting of RF output power expected by the customer and is going to be fixed on the firmware of the final end product.

Power Parameters:

Test Software Version	EMI_TEST_v2.1		
Frequency	2405MHz	2440MHz	2480MHz
	default	default	default

## 2.4 Special Accessories

Follow auxiliary equipment(s) test with EUT that provided by the manufacturer or laboratory is listed as follow:

Description	Manufacturer	Model	Serial No.	Provided by	Other
/	/	/	/	/	/
/	/	/	/	/	/

## 2.5 Equipment List for the Test

No	Test Equipment	Manufacturer	Model No	Serial No	Cal. Date	Cal. Due Date
1	EMI Measuring Receiver	R&S	ESR	101160	2024.09.25	2025.09.24
2	Spectrum Analyzer	R&S	FSV40	101470	2024.09.23	2025.09.22
3	Low Noise Pre Amplifier	SCHWARZBECK	BBV 9745	00282	2024.09.25	2025.09.24
4	Low Noise Pre Amplifier	CESHENG	CSKJLNA231016A	CSKJLNA231016A	2024.09.25	2025.09.24
5	Passive Loop	ETS	6512	00165355	2024.08.29	2027.08.28
6	TRILOG Super Broadband test Antenna	SCHWARZBECK	VULB9168	01434	2024.08.29	2027.08.28
7	Broadband Horn Antenna	Schwarzbeck	BBHA 9120D	452	2024.08.29	2027.08.28





### 3 TEST CONDITIONS AND RESULTS

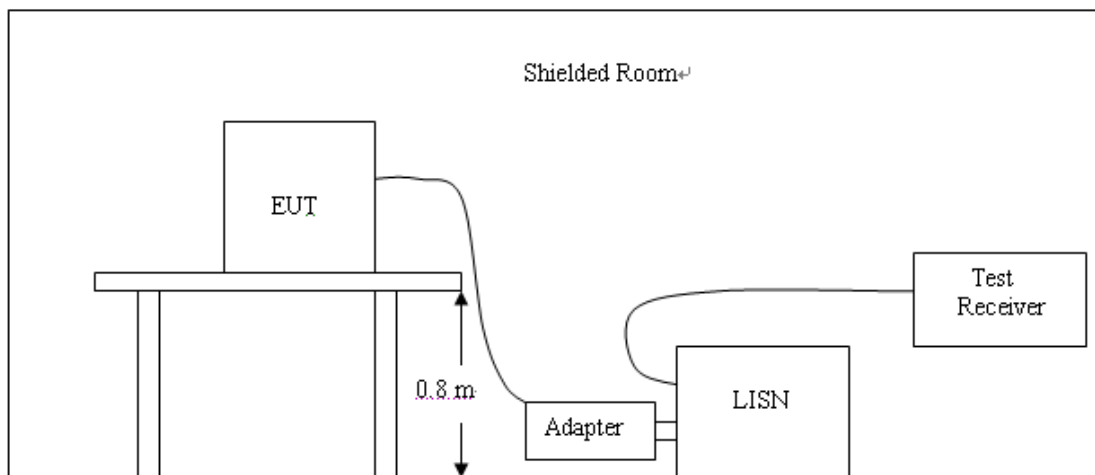
#### 3.1 Conducted Emissions Test

##### LIMIT

Frequency range (MHz)	Limit (dBuV)	
	Quasi-peak	Average
0.15-0.5	66 to 56*	56 to 46*
0.5-5	56	46
5-30	60	50

\* Decreases with the logarithm of the frequency.

##### TEST CONFIGURATION



##### TEST PROCEDURE

1. The equipment was set up as per the test configuration to simulate typical actual usage per the user's manual. The EUT is a tabletop system; a wooden table with a height of 0.8 meters is used and is placed on the ground plane as per ANSI C63.10:2013.
2. Support equipment, if needed, was placed as per ANSI C63.10:2013.
3. All I/O cables were positioned to simulate typical actual usage as per ANSI C63.10:2013.
4. The adapter received AC120V/60Hz power through a Line Impedance Stabilization Network (LISN) which supplied power source and was grounded to the ground plane.
5. All support equipments received AC power from a second LISN, if any.
6. The EUT test program was started. Emissions were measured on each current carrying line of the EUT using a spectrum Analyzer / Receiver connected to the LISN powering the EUT. The LISN has two monitoring points: Line 1 (Hot Side) and Line 2 (Neutral Side). Two scans were taken: one with Line 1 connected to Analyzer / Receiver and Line 2 connected to a 50 ohm load; the second scan had Line 1 connected to a 50 ohm load and Line 2 connected to the Analyzer / Receiver.
7. Analyzer / Receiver scanned from 150 KHz to 30MHz for emissions in each of the test modes.
8. During the above scans, the emissions were maximized by cable manipulation.

**TEST RESULTS**

Not applicable to this device, EUT is powered by battery.

## 3.2 Radiated Emissions and Band Edge

### Limit

For intentional device, according to § 15.209(a), the general requirement of field strength of radiated emission out of authorized band shall not exceed the following table at a 3 meters measurement distance.

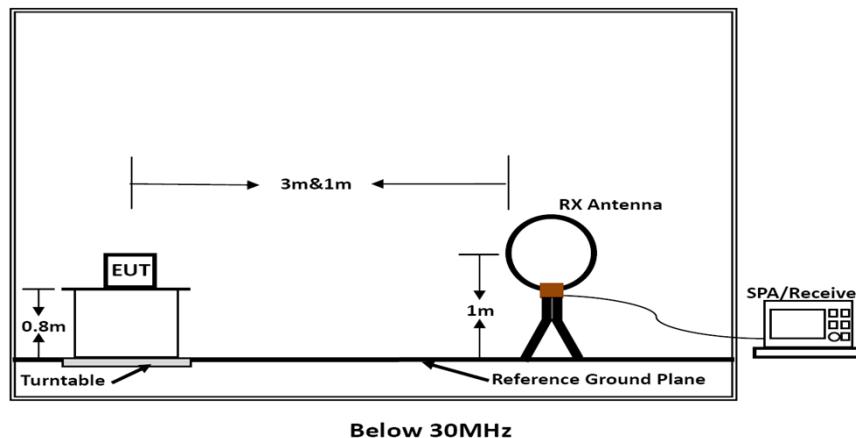
In addition, radiated emissions which fall in the restricted bands, as defined in §15.205(a), must also comply with the radiated emission limits specified in §15.209(a)

Radiated emission limits

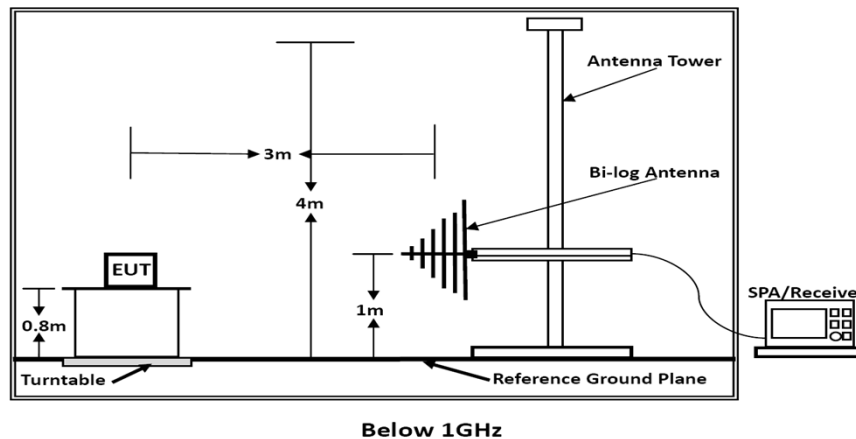
Frequency (MHz)	Distance (Meters)	Radiated (dBμV/m)	Radiated (μV/m)
0.009-0.49	3	$20\log(2400/F(\text{KHz}))+40\log(300/3)$	$2400/F(\text{KHz})$
0.49-1.705	3	$20\log(24000/F(\text{KHz}))+40\log(30/3)$	$24000/F(\text{KHz})$
1.705-30	3	$20\log(30)+40\log(30/3)$	30
30-88	3	40.0	100
88-216	3	43.5	150
216-960	3	46.0	200
Above 960	3	54.0	500

### TEST CONFIGURATION

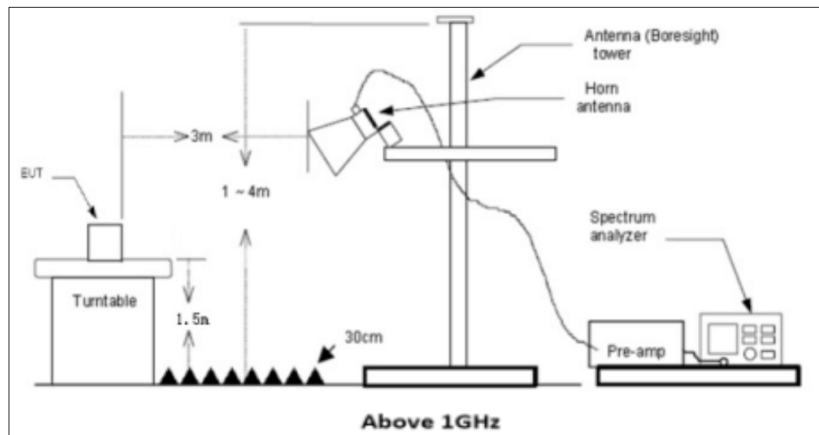
(A) Radiated Emission Test Set-Up, Frequency Below 30MHz



(B) Radiated Emission Test Set-Up, Frequency below 1000MHz



### (C) Radiated Emission Test Set-Up, Frequency above 1000MHz



### Test Procedure

- Below 1GHz measurement the EUT is placed on a turntable which is 0.8m above ground plane, and above 1GHz measurement EUT was placed on a low permittivity and low loss tangent turn table which is 1.5m above ground plane.
- Maximum procedure was performed by raising the receiving antenna from 1m to 4m and rotating the turn table from 0°C to 360°C to acquire the highest emissions from EUT
- And also, each emission was to be maximized by changing the polarization of receiving antenna both horizontal and vertical.
- Repeat above procedures until all frequency measurements have been completed.
- Radiated emission test frequency band from 9KHz to 25GHz.
- The distance between test antenna and EUT as following table states:

Test Frequency range	Test Antenna Type	Test Distance
9KHz-30MHz	Active Loop Antenna	3
30MHz-1GHz	Bilog Antenna	3
1GHz-18GHz	Horn Antenna	3
18GHz-25GHz	Horn Antennna	1

- Setting test receiver/spectrum as following table states:

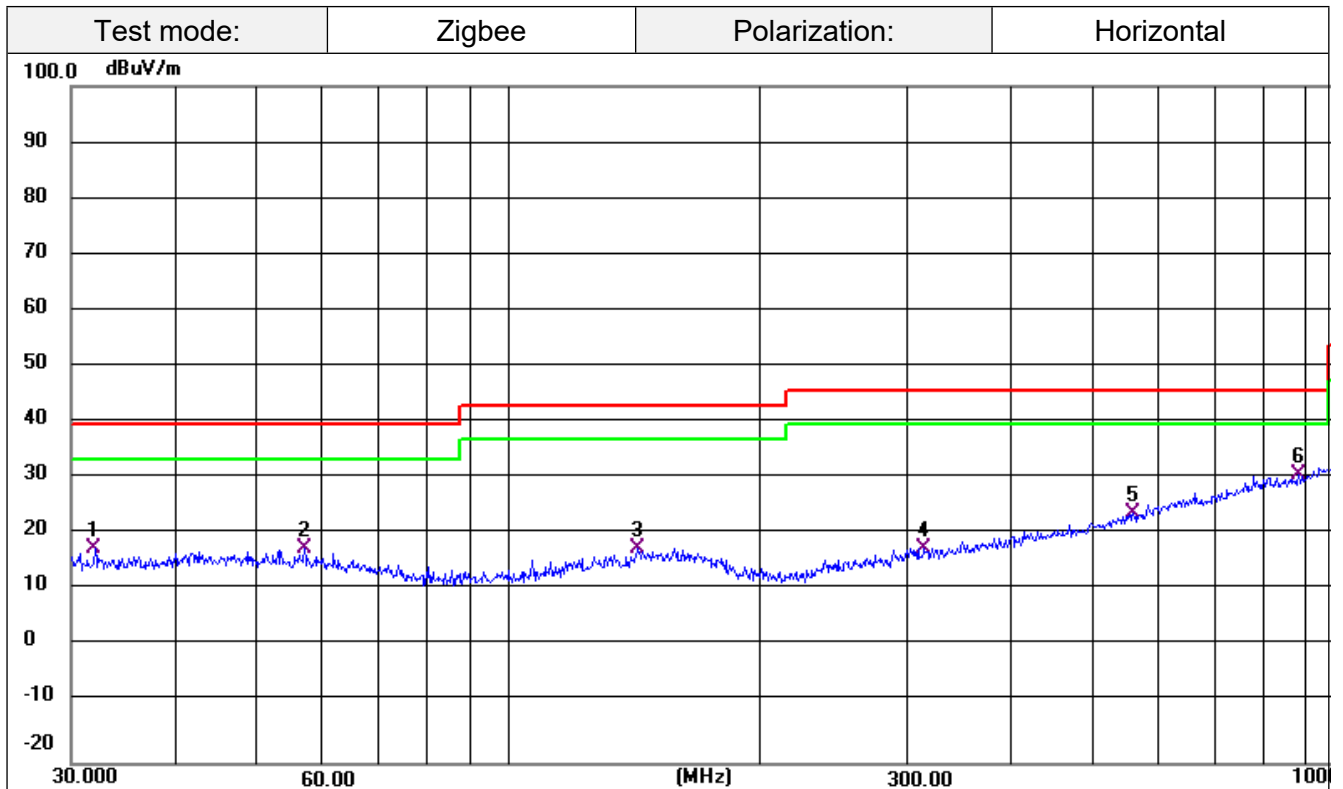
Test Frequency range	Test Receiver/Spectrum Setting	Detector
9KHz-150KHz	RBW=200Hz/VBW=3KHz, Sweep time=Auto	QP
150KHz-30MHz	RBW=9KHz/VBW=100KHz, Sweep time=Auto	QP
30MHz-1GHz	RBW=120KHz/VBW=1000KHz, Sweep time=Auto	QP
1GHz-40GHz	Peak Value: RBW=1MHz/VBW=3MHz, Sweep time=Auto Average Value: RBW=1MHz/VBW=10Hz, Sweep time=Auto	Peak

### TEST RESULTS

Remark:

- The EUT was tested at three different polar directions: X, Y and Z. only the worst case (X axis) is reported.
- For below 1GHz testing recorded worst at middle channel.
- Radiated emission test from 9 KHz to 10th harmonic of fundamental was verified, and The emission levels from 9kHz to 30MHz are attenuated 20dB below the limit and not recorded in report.

### For 30MHz-1GHz



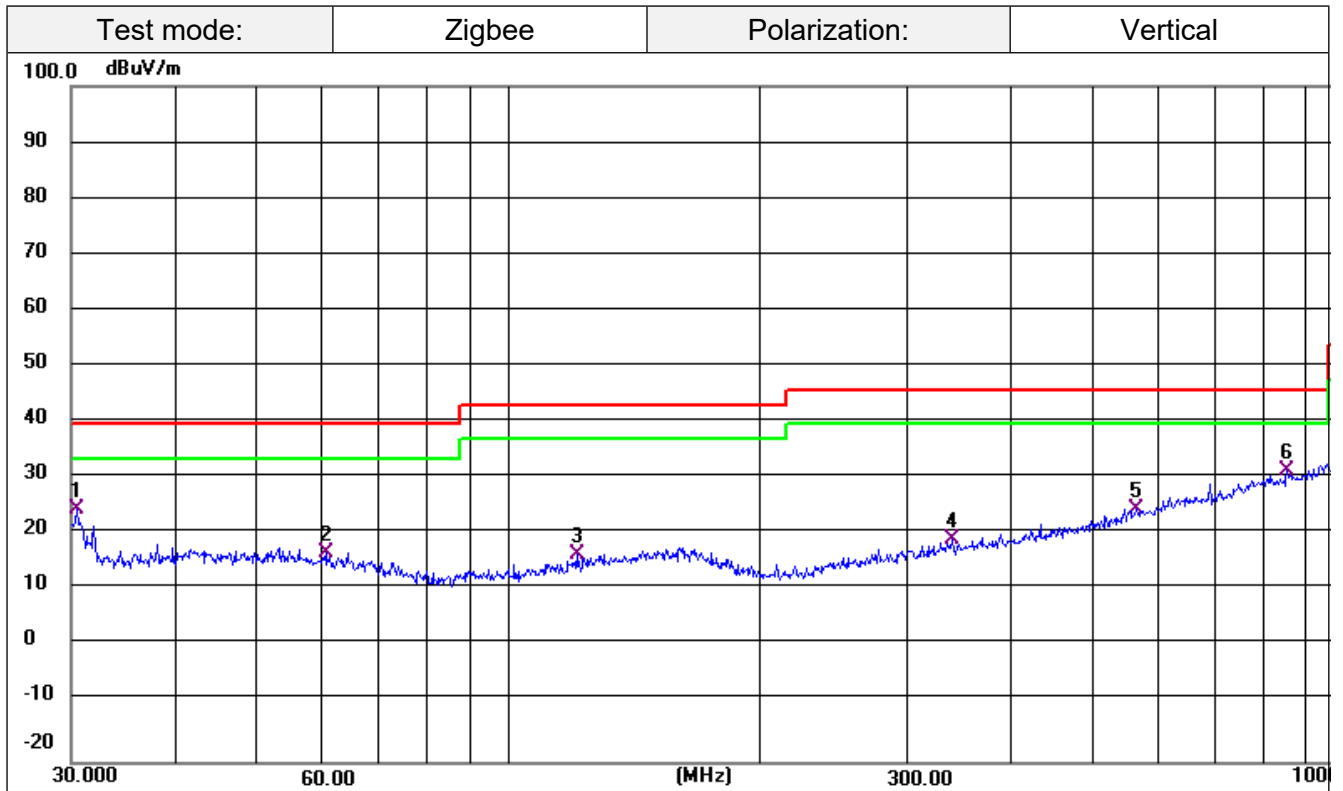
Remark:

Emission Level = Reading + Factor;

Factor = Antenna Factor + Cable Loss – Pre-amplifier;

Margin= Emission Level - Limit.

No.	Frequency (MHz)	Reading (dBuV)	Factor (dB/m)	Level (dBuV/m)	Limit (dBuV/m)	Margin (dB)	Det.
1	32.0667	35.65	-17.43	18.22	40.00	-21.78	QP
2	56.9912	35.22	-17.14	18.08	40.00	-21.92	QP
3	142.8243	35.33	-17.08	18.25	43.50	-25.25	QP
4	314.3765	34.64	-16.53	18.11	46.00	-27.89	QP
5	558.7302	35.30	-10.88	24.42	46.00	-21.58	QP
6	881.4067	36.36	-5.04	31.32	46.00	-14.68	QP



Remark:

Emission Level = Reading + Factor;

Factor = Antenna Factor + Cable Loss – Pre-amplifier;

Margin= Emission Level - Limit.

No.	Frequency (MHz)	Reading (dBuV)	Factor (dB/m)	Level (dBuV/m)	Limit (dBuV/m)	Margin (dB)	Det.
1	30.4238	42.56	-17.54	25.02	40.00	-14.98	QP
2	60.4919	34.60	-17.32	17.28	40.00	-22.72	QP
3	120.6991	35.21	-18.35	16.86	43.50	-26.64	QP
4	339.5888	35.64	-15.95	19.69	46.00	-26.31	QP
5	564.6389	35.76	-10.71	25.05	46.00	-20.95	QP
6	854.0247	37.11	-5.37	31.74	46.00	-14.26	QP

**For 1GHz to 25GHz**

Frequency(MHz):		2405		Polarity:	Horizontal	
Frequency	Meter Reading	Factor	Emission Level	Limits	Margin	Detector Type
(MHz)	(dBμV)	(dB/m)	(dBμV/m)	(dBμV/m)	(dB)	
4810.75	64.47	-7.48	56.99	74	-17.01	PEAK
4810.75	55.66	-7.48	48.18	54	-5.82	AVG
7215.25	57.44	-1.54	55.90	74	-18.10	PEAK
7215.25	47.89	-1.54	46.35	54	-7.65	AVG

Frequency(MHz):		2405		Polarity:	VERTICAL	
Frequency	Meter Reading	Factor	Emission Level	Limits	Margin	Detector Type
(MHz)	(dBμV)	(dB/m)	(dBμV/m)	(dBμV/m)	(dB)	
4810.75	64.84	-7.48	57.36	74	-16.64	PEAK
4810.75	55.69	-7.48	48.21	54	-5.79	AVG
7215.25	58.58	-1.54	57.04	74	-16.96	PEAK
7215.25	49.48	-1.54	47.94	54	-6.06	AVG

Frequency(MHz):		2440		Polarity:	Horizontal	
Frequency	Meter Reading	Factor	Emission Level	Limits	Margin	Detector Type
(MHz)	(dBμV)	(dB/m)	(dBμV/m)	(dBμV/m)	(dB)	
4879.75	62.02	-6.76	55.26	74	-18.74	PEAK
4879.75	54.26	-6.76	47.50	54	-6.50	AVG
7320.75	53.59	-0.52	53.07	74	-20.93	PEAK
--	--	--	--	--	--	AVG

Frequency(MHz):		2440		Polarity:	VERTICAL	
Frequency	Meter Reading	Factor	Emission Level	Limits	Margin	Detector Type
(MHz)	(dBμV)	(dB/m)	(dBμV/m)	(dBμV/m)	(dB)	
4879.75	63.11	-6.76	56.35	74	-17.65	PEAK
4879.75	56.23	-6.76	49.47	54	-4.53	AVG
7320.75	53.82	-0.52	53.30	74	-20.70	PEAK
--	--	--	--	--	--	AVG

Frequency(MHz):		2480		Polarity:	Horizontal	
Frequency	Meter Reading	Factor	Emission Level	Limits	Margin	Detector Type
(MHz)	(dBμV)	(dB/m)	(dBμV/m)	(dBμV/m)	(dB)	
4960.35	47.02	-5.77	54.11	74	-19.89	PEAK
4960.35	54.75	-5.77	48.98	54	-5.02	AVG
7440.60	46.47	-0.53	55.98	74	-18.02	PEAK
7440.60	46.37	-0.53	45.84	54	-8.16	AVG

Frequency(MHz):		2480		Polarity:	VERTICAL	
Frequency	Meter Reading	Factor	Emission Level	Limits	Margin	Detector Type
(MHz)	(dBμV)	(dB/m)	(dBμV/m)	(dBμV/m)	(dB)	
4960.35	45.63	-5.77	54.55	74	-19.45	PEAK
4960.35	55.43	-5.77	49.66	54	-4.34	AVG
7440.60	45.02	-0.53	56.05	74	-17.95	PEAK
7440.60	46.22	-0.53	45.69	54	-8.31	AVG

**REMARKS:**

1. Emission level (dBuV/m) = Reading (dBuV)+ Factor (dB/m)
2. Factor (dB/m) = Antenna Factor (dB/m)+Cable Factor (dB)-Pre-amplifier Factor
3. Margin value = Emission level- Limit value.
4. -- Mean the PK detector measured value is below average limit.
5. Other emission levels are attenuated 20dB below the limit and not recorded in report.
6. RBW1MHz VBW3MHz Peak detector is for PK value; RBW 1MHz VBW10Hz Peak detector is for AV value.



**Radiation Restricted band**

Frequency(MHz):		2405		Polarity:	Horizontal	
Frequency	Meter Reading	Factor	Emission Level	Limits	Margin	Detector Type
(MHz)	(dBμV)	(dB/m)	(dBμV/m)	(dBμV/m)	(dB)	
2387.55	52.38	-4.06	48.32	74	-25.68	PEAK
--	--	--	--	--	--	AVG
2390.00	40.62	-4.10	44.58	74	-29.42	PEAK
--	--	--	--	--	--	AVG

Frequency(MHz):		2405		Polarity:	Vertical	
Frequency	Meter Reading	Factor	Emission Level	Limits	Margin	Detector Type
(MHz)	(dBμV)	(dB/m)	(dBμV/m)	(dBμV/m)	(dB)	
2387.17	52.94	-4.06	48.88	74	-25.12	PEAK
--	--	--	--	--	--	AVG
2390.00	49.06	-4.10	44.96	74	-29.04	PEAK
--	--	--	--	--	--	AVG

Frequency(MHz):		2480		Polarity:	Horizontal	
Frequency	Meter Reading	Factor	Emission Level	Limits	Margin	Detector Type
(MHz)	(dBμV)	(dB/m)	(dBμV/m)	(dBμV/m)	(dB)	
2483.50	53.04	-3.09	49.95	74	-24.05	PEAK
--	--	--	--	--	--	AVG
2487.29	49.95	-3.04	46.91	74	-27.09	PEAK
--	--	--	--	--	--	AVG

Frequency(MHz):		2480		Polarity:	Vertical	
Frequency	Meter Reading	Factor	Emission Level	Limits	Margin	Detector Type
(MHz)	(dBμV)	(dB/m)	(dBμV/m)	(dBμV/m)	(dB)	
2483.50	53.63	-3.09	50.54	74	-23.46	PEAK
--	--	--	--	--	--	AVG
2486.24	50.83	-3.05	47.78	74	-26.22	PEAK
--	--	--	--	--	--	AVG

**REMARKS:**

1. Emission level (dBuV/m) = Reading (dBuV)+ Factor (dB/m)
2. Factor (dB/m) = Antenna Factor (dB/m)+Cable Factor (dB)-Pre-amplifier Factor
3. Margin value = Emission level- Limit value.
4. -- Mean the PK detector measured value is below average limit.
5. Other emission levels are attenuated 20dB below the limit and not recorded in report.
6. RBW1MHz VBW3MHz Peak detector is for PK value; RBW 1MHz VBW10Hz Peak detector is for AV value.

### 3.3 Maximum Peak Conducted Output Power

#### Limit

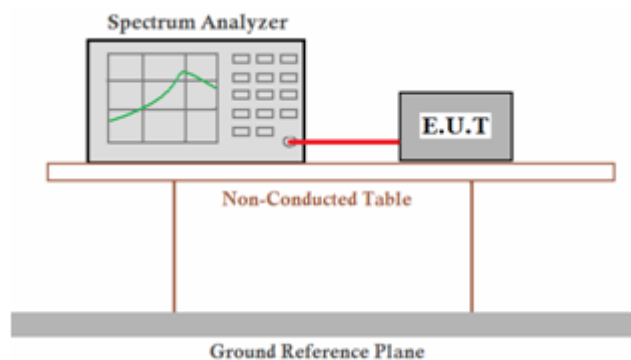
The maximum peak conducted output power shall not exceed 1.0 W.

#### Test Procedure

Remove the antenna from the EUT and then connect a low loss RF cable from the antenna port to the Spectrum Analyzer. The following procedure shall be used when an instrument with a resolution bandwidth that is greater than the DTS bandwidth is available to perform the measurement:

- Set the RBW  $\geq$  DTS bandwidth.
- Set VBW  $\geq 3 \times$  RBW
- Set span  $\geq 3 \times$  RBW
- Sweep time = auto couple.
- Detector = peak.
- Trace mode = max hold.
- Allow trace to fully stabilize.
- Use peak marker function to determine the peak amplitude level.

#### Test Configuration



#### Test Results

☒ Pass ☐ Not Applicable

Note:

For test data, please refer to Appendix RF test data for Zigbee.

### 3.4 Power Spectral Density

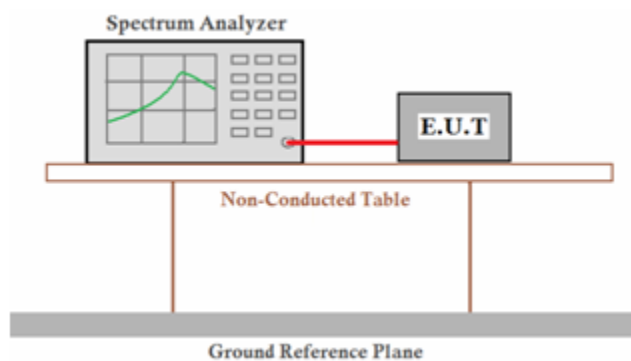
#### Limit

For digitally modulated systems, the power spectral density conducted from the intentional radiator to the antenna shall not be greater than 8 dBm in any 3 kHz band during any time interval of continuous transmission.

#### Test Procedure

1. Use this procedure when the maximum peak conducted output power in the fundamental emission is used to demonstrate compliance.
2. Set the RBW  $\geq 3$  kHz.
3. Set the VBW  $\geq 3 \times$  RBW.
4. Set the span to 1.5 times the DTS channel bandwidth.
5. Detector = peak.
6. Sweep time = auto couple.
7. Trace mode = max hold.
8. Allow trace to fully stabilize.
9. Use the peak marker function to determine the maximum power level.
10. If measured value exceeds limit, reduce RBW (no less than 3 kHz) and repeat.
11. The resulting peak PSD level must be 8dBm.

#### Test Configuration



#### Test Results

☒ Pass ☐ Not Applicable

Note:

For test data, please refer to Appendix RF test data for Zigbee.

### 3.5 6dB Bandwidth

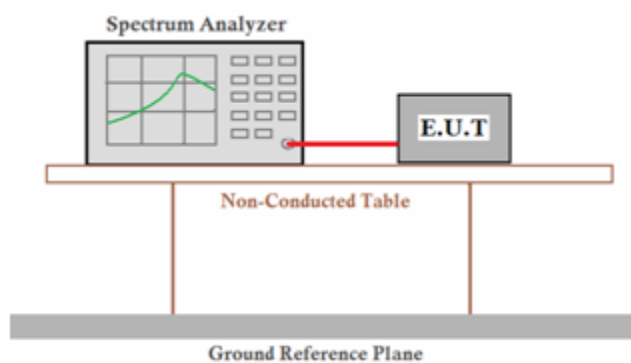
#### Limit

For digital modulation systems, the minimum 6 dB bandwidth shall be at least 500 kHz

#### Test Procedure

The transmitter output was connected to the spectrum analyzer through an attenuator. The bandwidth of the fundamental frequency was measured by spectrum analyzer with 100 KHz RBW and 300 KHz VBW. The 6dB bandwidth is defined as the total spectrum the power of which is higher than peak power minus 6dB. Measured the 6dB bandwidth by related function of the spectrum analyzer.

#### Test Configuration



#### Test Results

☒ Pass ☐ Not Applicable

Note:

For test data, please refer to Appendix RF test data for Zigbee.

### 3.6 Out-of-band Emissions

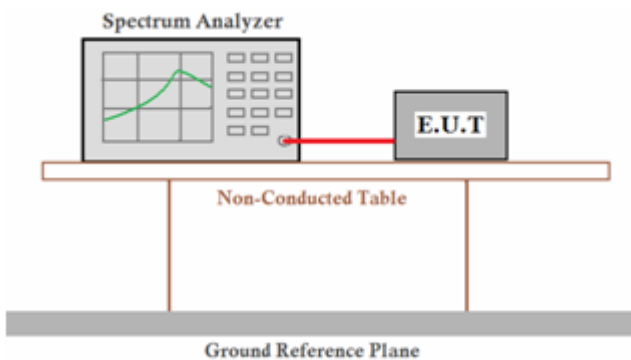
#### Limit

In any 100 kHz bandwidth outside the frequency band in which the spread spectrum or digitally modulated intentional radiator is operating, the radio frequency power that is produced by the intentional radiator shall be at least 20 dB below that in the 100 kHz bandwidth within the band that contains the highest level of the desired power, based on either an RF conducted or a radiated measurement, provided the transmitter demonstrates compliance with the peak conducted power limits. If the transmitter complies with the conducted power limits based on the use of RMS averaging over a time interval, as permitted under paragraph (b)(3) of this section, the attenuation required under this paragraph shall be 30 dB instead of 20 dB. Attenuation below the general limits specified in §15.209(a) is not required.

#### Test Procedure

Connect the transmitter output to spectrum analyzer using a low loss RF cable, and set the spectrum analyzer to RBW=100 kHz, VBW= 300 kHz, peak detector, and max hold. Measurements utilizing these settings are made of the in-band reference level, bandedge and out-of-band emissions.

#### Test Configuration



#### Test Results

☒ Pass ☐ Not Applicable

Note:

For test data, please refer to Appendix RF test data for Zigbee.

### 3.7 Antenna Requirement

#### **Standard Applicable**

**For intentional device, according to FCC 47 CFR Section 15.203:**

An intentional radiator shall be designed to ensure that no antenna other than that furnished by the responsible party shall be used with the device. The use of a permanently attached antenna or of an antenna that uses a unique coupling to the intentional radiator, the manufacturer may design the unit so that a broken antenna can be replaced by the user, but the use of a standard antenna jack or electrical connector is prohibited

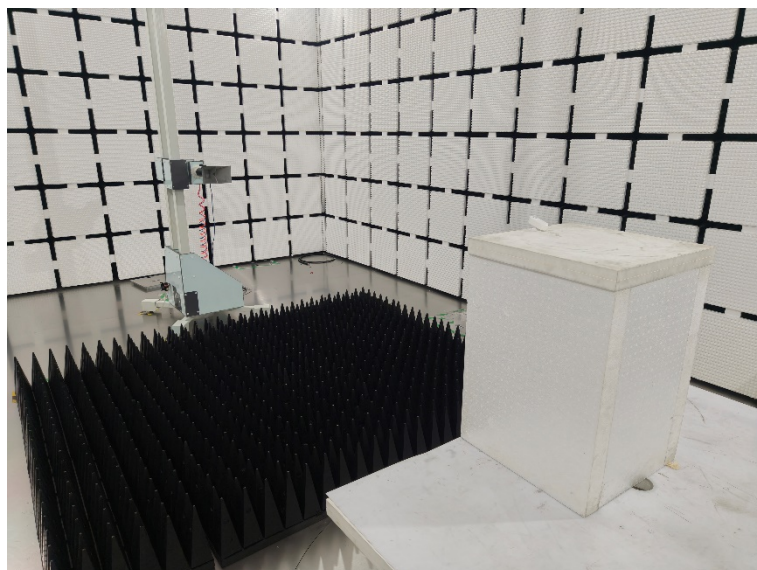
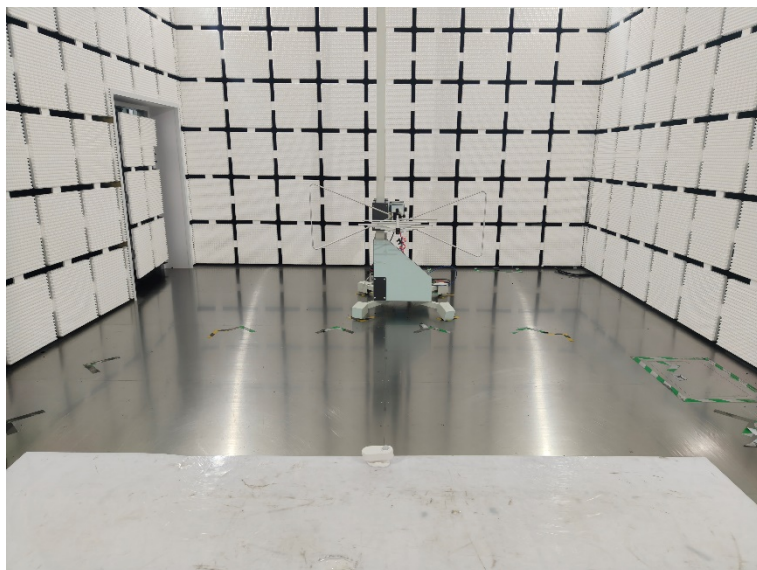
**FCC CFR Title 47 Part 15 Subpart C Section 15.247(b) (4):**

(4) The conducted output power limit specified in paragraph (b) of this section is based on the use of antennas with directional gains that do not exceed 6 dBi. Except as shown in paragraph (c) of this section, if transmitting antennas of directional gain greater than 6 dBi are used, the conducted output power from the intentional radiator shall be reduced below the stated values in paragraphs (b)(1), (b)(2), and (b)(3) of this section, as appropriate, by the amount in dB that the directional gain of the antenna exceeds 6 dBi.

#### **Test Result**

The maximum gain of antenna was 1.08 dBi with impedance 50Ω.

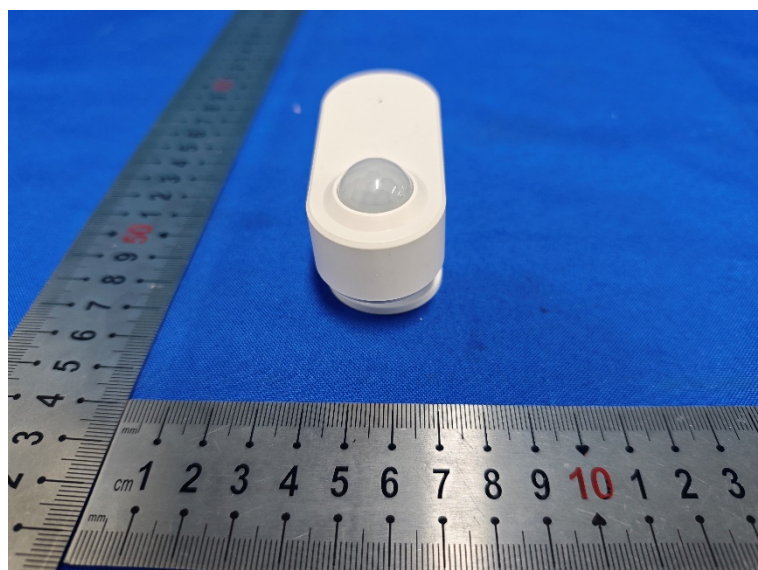
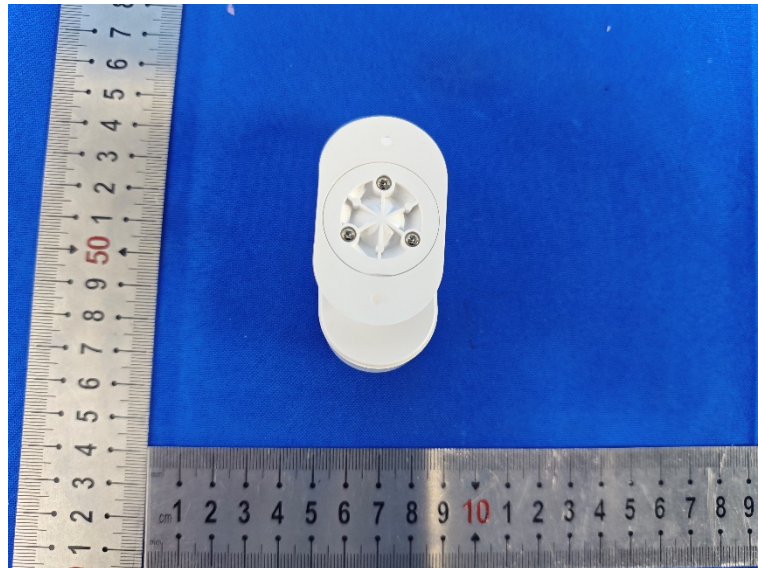
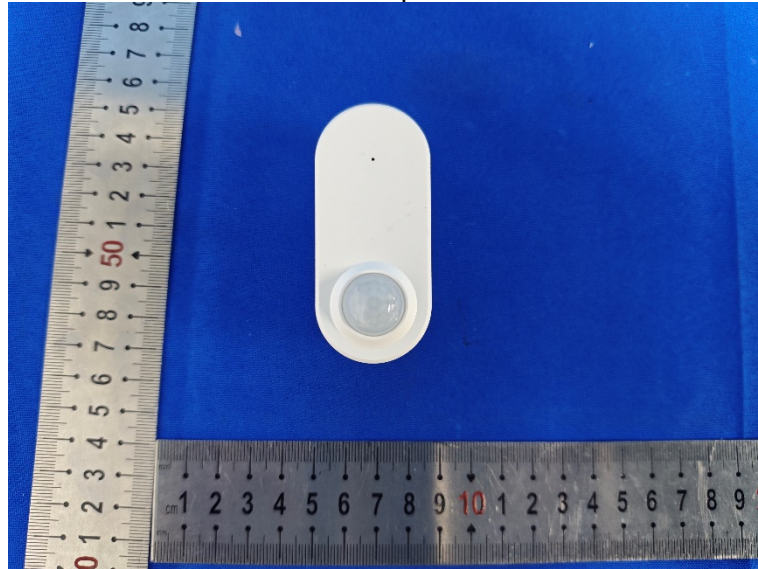
## 4 Test Setup Photographs of EUT



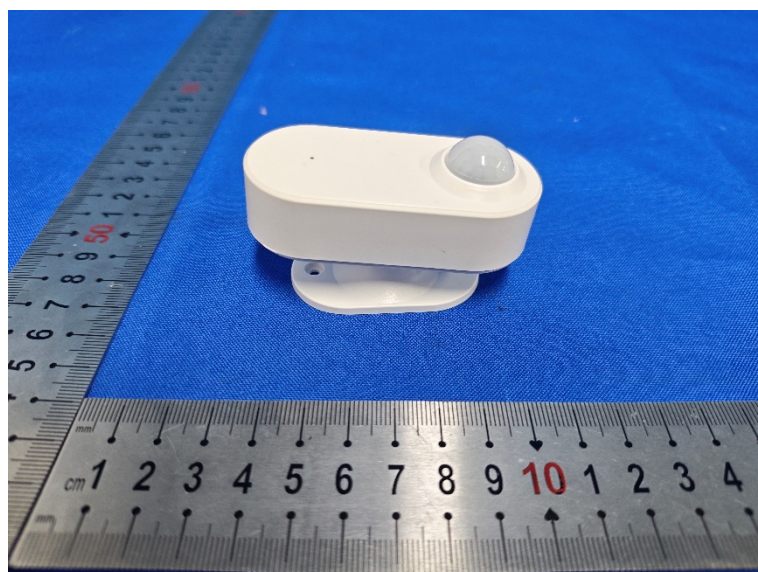
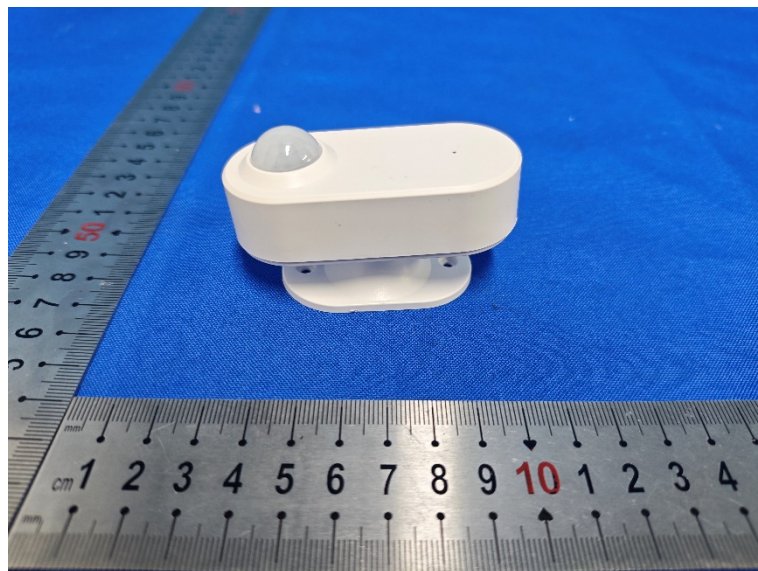
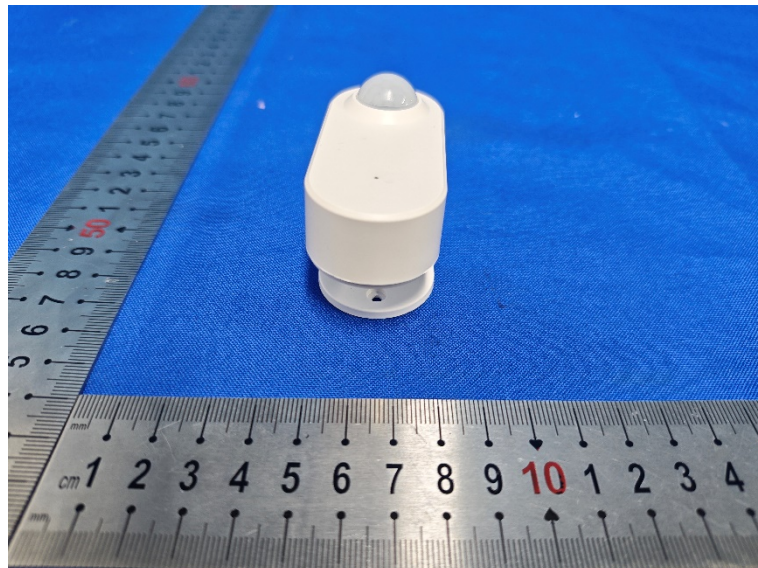


## 5 Photos of EUT

External photos

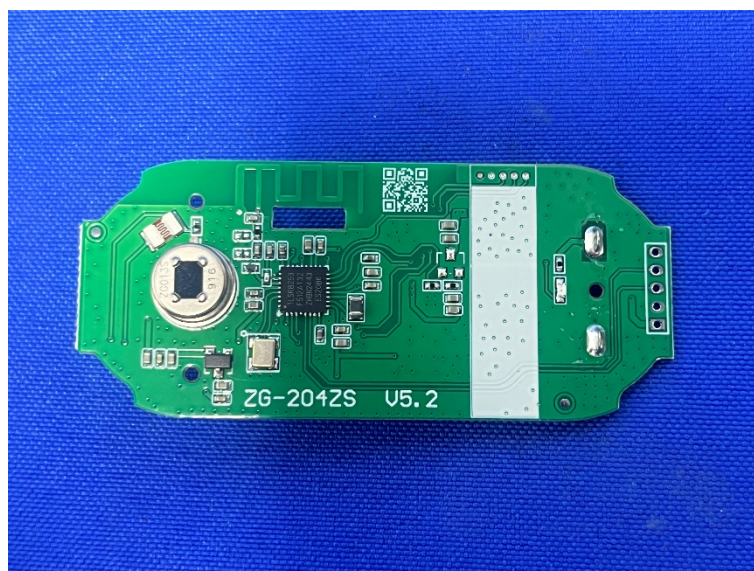
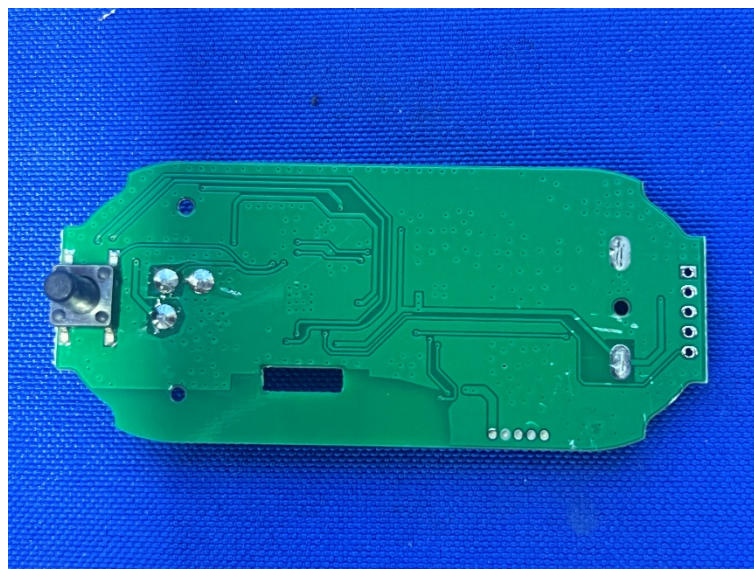
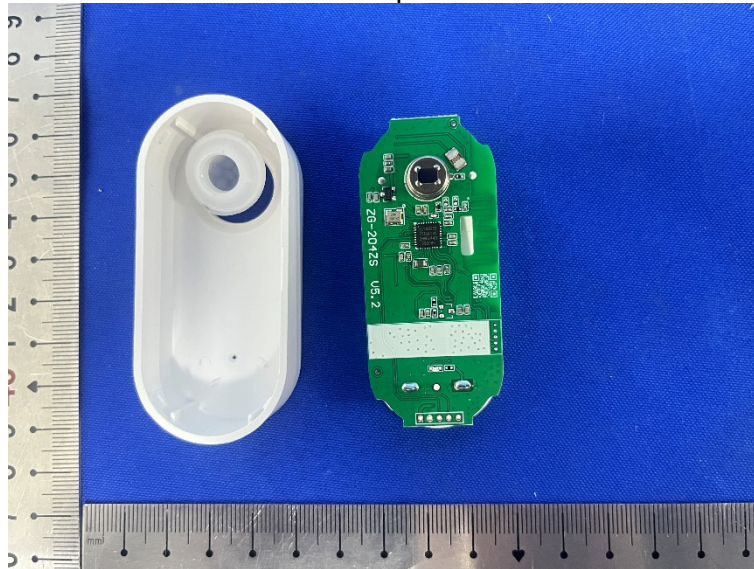








### Internal photos



\*\*\*\*\* End of Report \*\*\*\*\*