

# Kid Galaxy Inc

FCC ID: QEARCGOGO27T

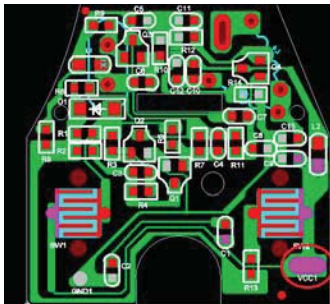
2016/7/21

To Whom It May Concern:

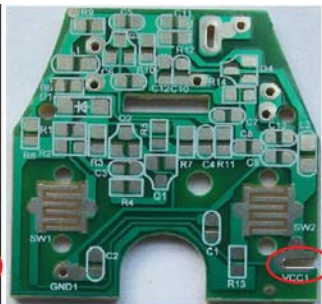
This letter is providing the additional information for the Permissive Change application. The model (10909) is based on the previously original certified model (10907). The following component has been changed:

The PCB was opened to a slot on the position of "VCC1", see the photo, its version was accordingly changed from REV1.4 to REV1.5. And, we add two kinds of cars (receiver), that is the transmitter of model #10909 is common use for model #10907 & #10911.

All design including electronic, electrical and construction remain the same except the above mentioned. The above specified change is not intended for maximum power.



REV1.4



REV1.5

Sincerely,

**Kid Galaxy Inc.**

Irene Ngai

Vice President