

EXHIBIT 9**Internal Photographs**

(Pursuant to FCC Part 2.1033(b)(7), 2.1033(c)(12) and RSP 100 Annex C)

The following photographs are attached.

Exhibit

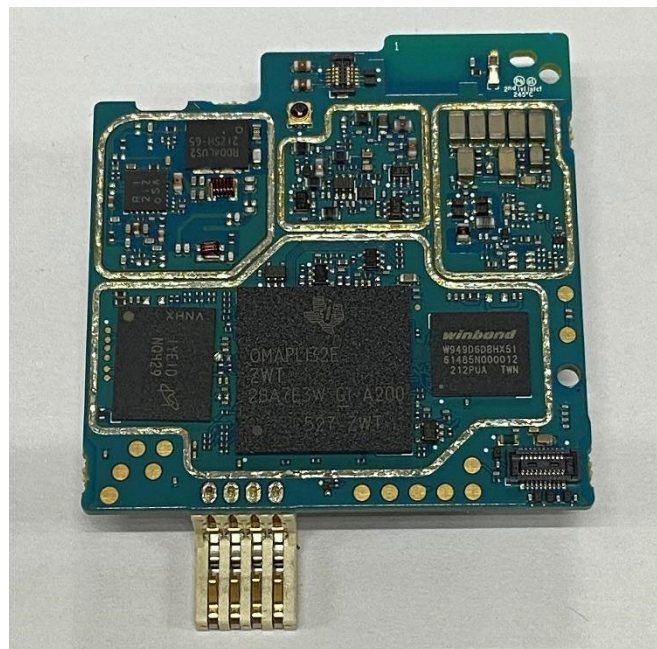
- | | | |
|-----|----------------------------------------------------------|----|
| 1. | RF board <u>with</u> Shields (Top) - Display model | 9A |
| 2. | RF board <u>without</u> Shields (Top) - Display model | 9B |
| 3. | RF board <u>with</u> Shields (Top) - Plain model | 9C |
| 4. | RF board <u>without</u> Shields (Top) - Plain model | 9D |
| 5. | RF board <u>with</u> Shields (Bottom) - Display model | 9E |
| 6. | RF board <u>without</u> Shields (Bottom) - Display model | 9F |
| 7. | RF board <u>with</u> Shields (Bottom) - Plain model | 9G |
| 8. | RF board <u>without</u> Shields (Bottom) - Plain model | 9H |
| 9. | RF boards <u>with</u> housing - Display model | 9I |
| 10. | RF boards <u>with</u> housing - Plain model | 9J |
| 11. | Display Board (Top) | 9K |
| 12. | Display Board <u>with</u> Shield (Bottom) | 9L |
| 13. | Display Board <u>without</u> Shield (Bottom) | 9M |
| 14. | Exploded view of the radio | 9N |

Exhibit 9A



RF board with Shields (Top) - Display Model

Exhibit 9B



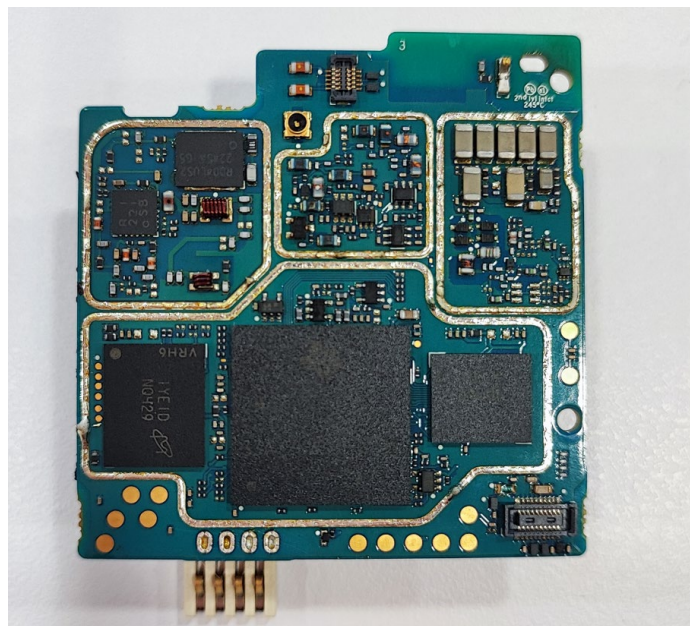
RF board without Shields (Top) - Display Model

Exhibit 9C



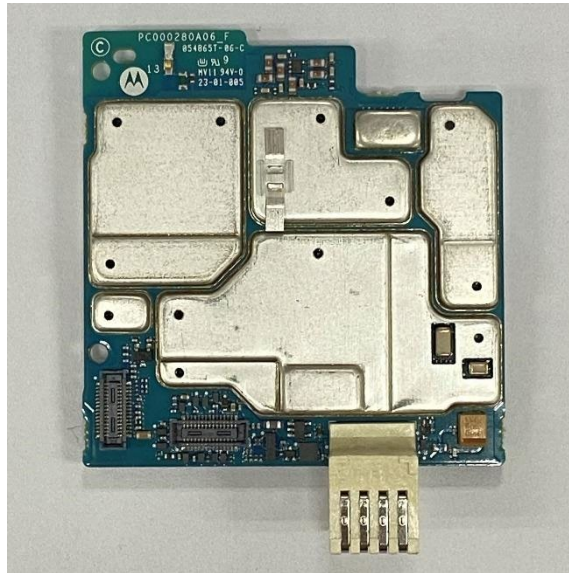
RF board with Shields (Top) - Plain Model

Exhibit 9D



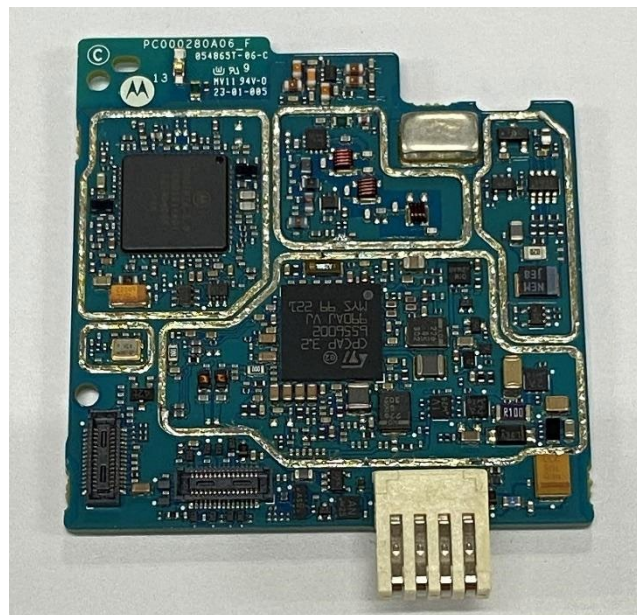
RF board without Shields (Top) - Plain Model

Exhibit 9E



RF board with Shields (Bottom) - Display Model

Exhibit 9F



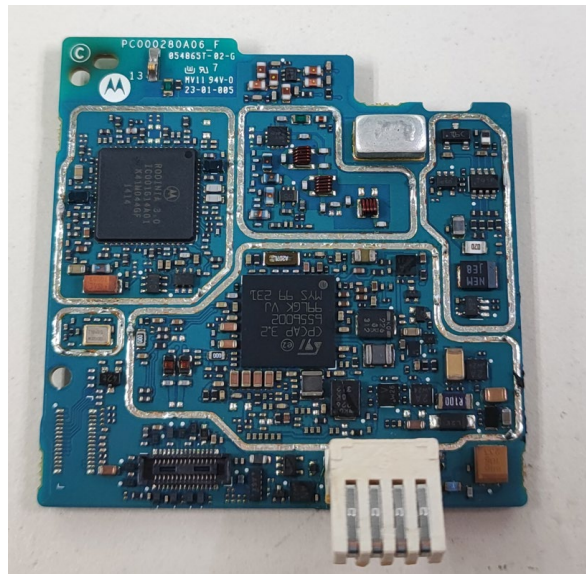
RF board without Shields (Bottom) - Display Model

Exhibit 9G



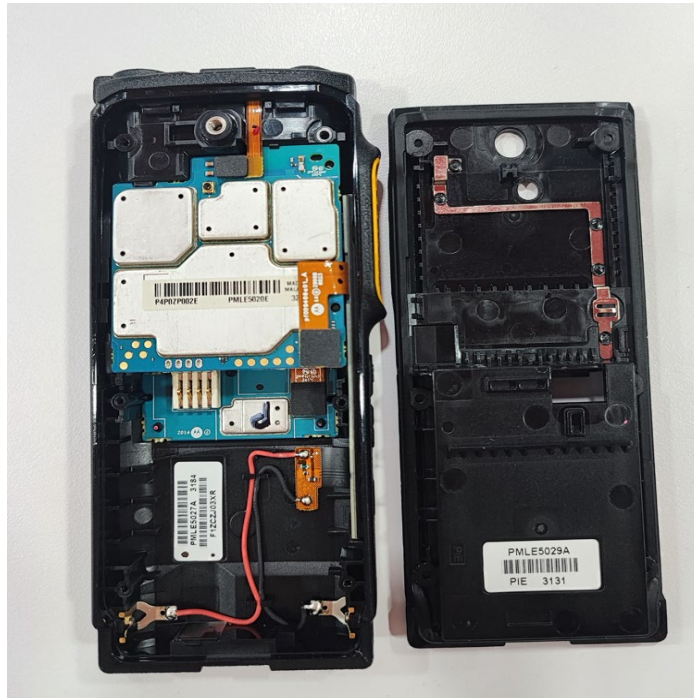
RF board with Shields (Bottom) - Plain Model

Exhibit 9H



RF board without Shields (Bottom) - Plain Model

Exhibit 9I



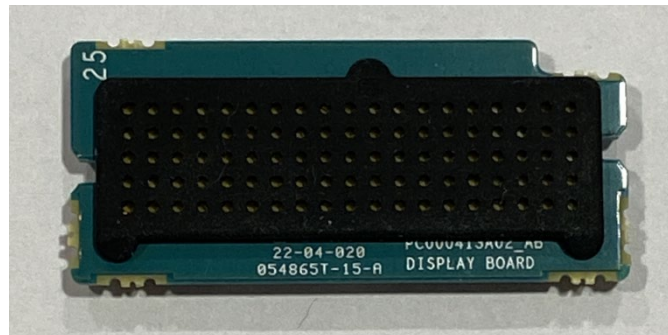
RF boards with housing - Display model

Exhibit 9J



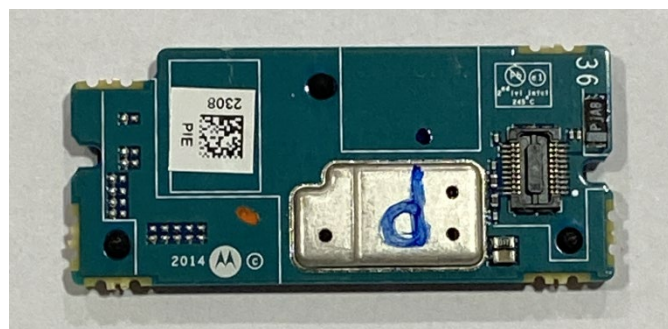
RF boards with housing - Plain model

Exhibit 9K



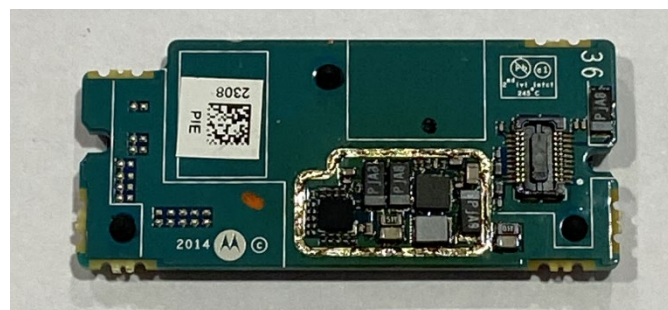
Display Board (Top)

Exhibit 9L



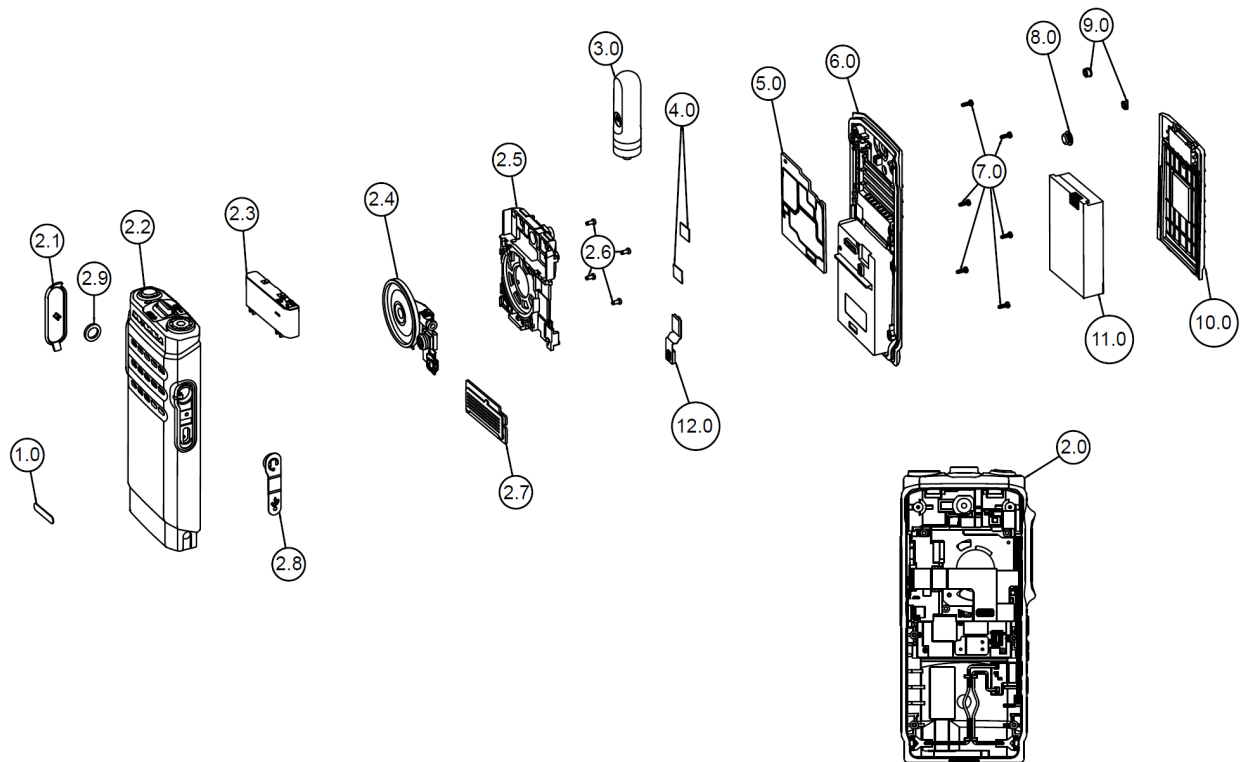
Display Board with Shield (Bottom)

Exhibit 9M



Display Board without Shield (Bottom)

Exhibit 9N



Exploded view of the radio

*** END ***