

## [VTECH]

### [2.4GHz Dipole Antenna]

**Model:** RM5887HD BU (WIFI)

#### **Antenna description:**

This antenna is optimized and used in the Baby Unit in the baby monitor models. This antenna is directly soldered to the RF output in the main PCB.

#### **Ordering information:**

Model	Description
RM5887HD BU	2.4GHz Dipole Antenna

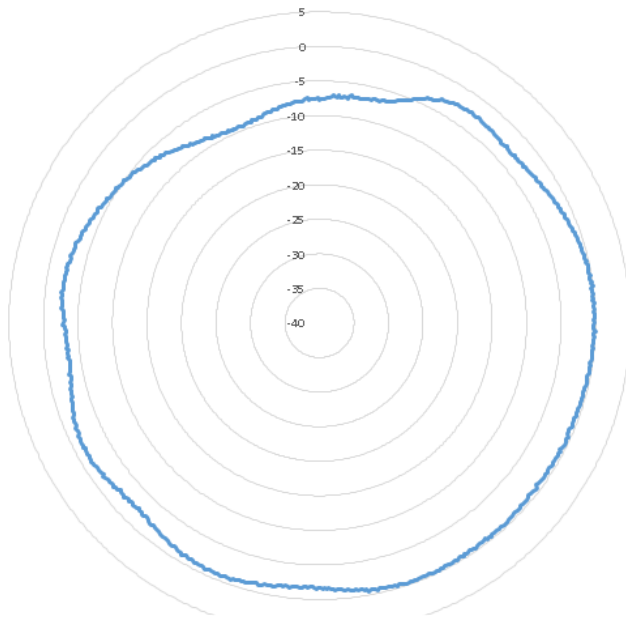
#### **Specification:**

<b>Operation Frequency Range</b>	2412-2472 MHz
<b>Maximum Gain</b>	0 dBi
<b>Type</b>	Dipole antenna (FPC)
<b>Operation bandwidth</b>	60MHz
<b>Nominal Impedance</b>	~50 ohms
<b>Connectors</b>	-
<b>Dimensions</b>	Shown in figure1
<b>Manufacturer</b>	Vtech Telecommunications Ltd
<b>Manufacturer address</b>	23/F, Tai Ping Industrial Centre, Blk1, 57 Ting Kok Road, Tai Po, Hong Kong
<b>Model number</b>	ANT-RM5887V2-F-WI-1

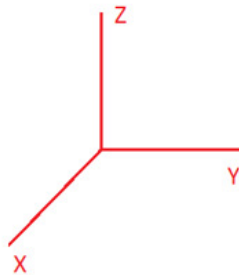
## [VTECH] [2.4GHz Dipole Antenna]

Antenna pattern (2437MHz) (the frequency with maximum gain)

XY plane (gain theta)



Coordination:



[VTECH]

[2.4GHz Dipole Antenna]

Physical Dimension:

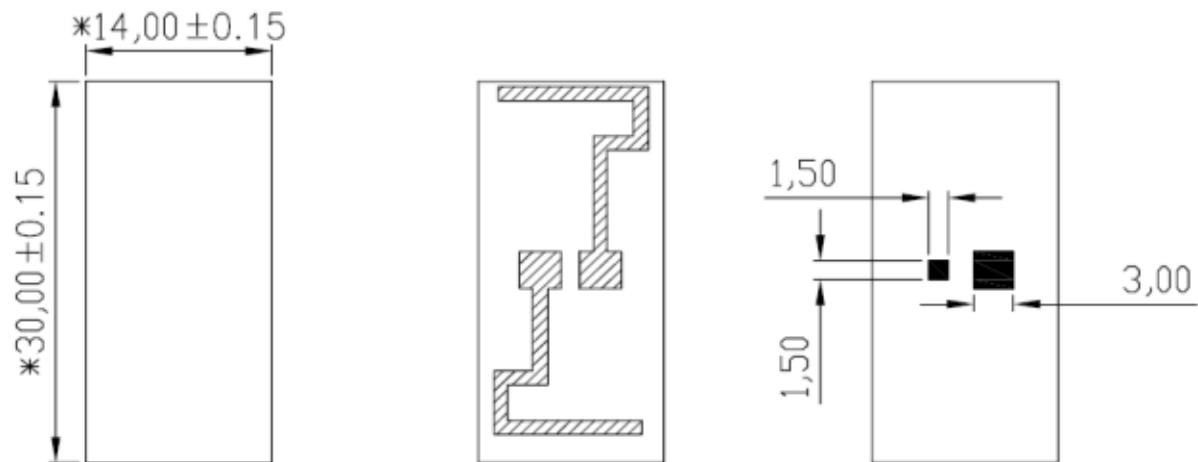


Figure 1 Physical dimension (mm)

## [VTECH]

### [2.4GHz Monopole Antenna]

**Model:** RM5887HD BU (BLE)

#### **Antenna description:**

This antenna is optimized and used in the Baby Unit in the baby monitor models. This antenna is directly soldered to the RF output in the main PCB.

#### **Ordering information:**

Model	Description
RM5887HD BU	2.4GHz Monopole Antenna

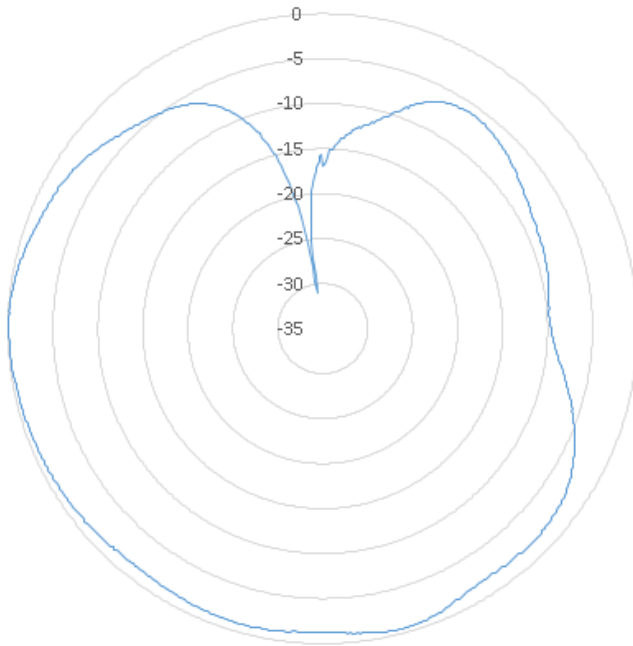
#### **Specification:**

<b>Operation Frequency Range</b>	2400-2480 MHz
<b>Maximum Gain</b>	0 dBi
<b>Type</b>	Monopole
<b>Operation bandwidth</b>	80MHz
<b>Nominal Impedance</b>	~50 ohms
<b>Connectors</b>	-
<b>Dimensions</b>	Shown in figure 1
<b>Manufacturer</b>	Vtech Telecommunications Ltd
<b>Manufacturer address</b>	23/F, Tai Ping Industrial Centre, Blk1, 57 Ting Kok Road, Tai Po, Hong Kong
<b>Model number</b>	ANT-RM5754V2-F-BT-1

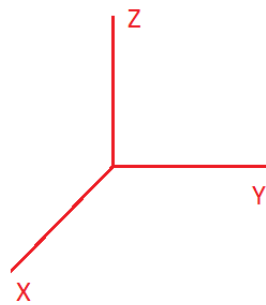
## [VTECH] [2.4GHz Monopole Antenna]

Antenna pattern (2440MHz) (the frequency with maximum gain)

XY plane (gain theta)

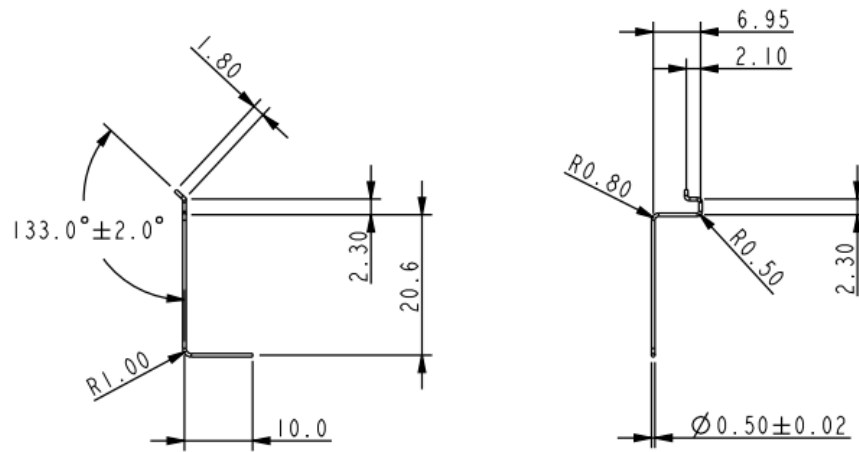


Coordination:



**[VTECH]**  
**[2.4GHz Monopole Antenna]**

**Physical Dimension:**



*Figure 1 Physical dimension (mm)*

## [VTECH]

### [2.4GHz Dipole Antenna]

**Model:** RM5887HD BU (FHSS)

#### **Antenna description:**

This antenna is optimized and used in the Baby Unit in the baby monitor models. This antenna is directly soldered to the RF output in the main PCB.

#### **Ordering information:**

Model	Description
RM5887HD BU	2.4GHz Dipole Antenna

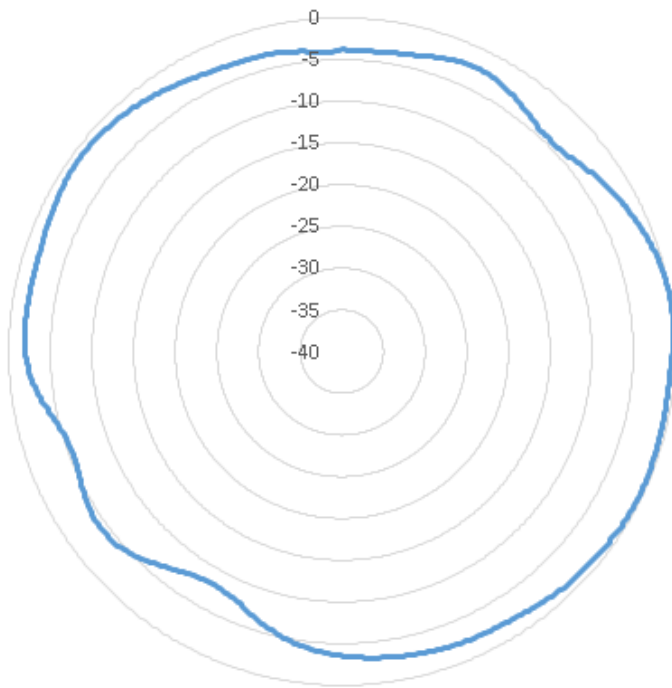
#### **Specification:**

<b>Operation Frequency Range</b>	2405-2475 MHz
<b>Maximum Gain</b>	0 dBi
<b>Type</b>	dipole antenna (FPC)
<b>Operation bandwidth</b>	70MHz
<b>Nominal Impedance</b>	~50 ohms
<b>Connectors</b>	-
<b>Dimensions</b>	14mm x 30mm
<b>Manufacturer</b>	Vtech Telecommunications Ltd
<b>Manufacturer address</b>	23/F, Tai Ping Industrial Centre, Blk1, 57 Ting Kok Road, Tai Po, Hong Kong
<b>Model number</b>	ANT-RM5887V2-F-FH-1

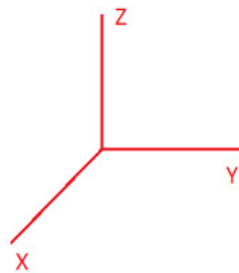
## [VTECH] [2.4GHz Dipole Antenna]

Antenna pattern (2442MHz) (the frequency with maximum gain)

XY plane (gain theta)



Coordination:





[VTECH]

[2.4GHz Dipole Antenna]

Physical Dimension:

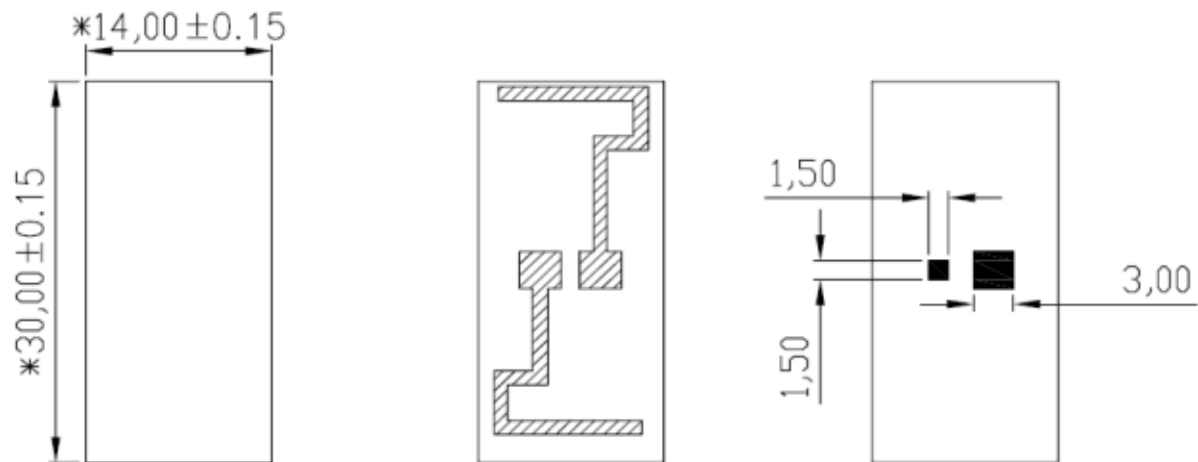


Figure 1 Physical dimension (mm)