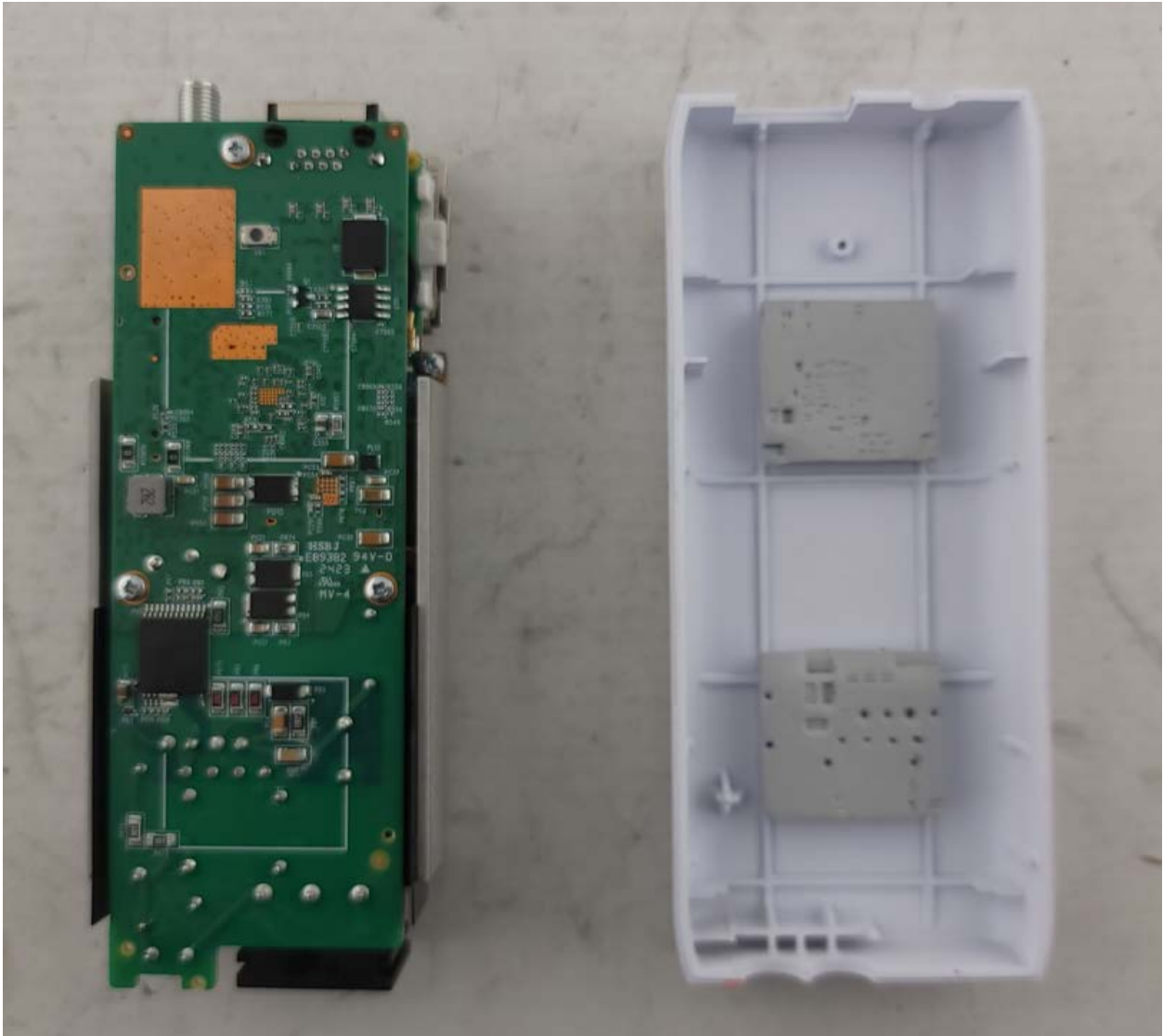
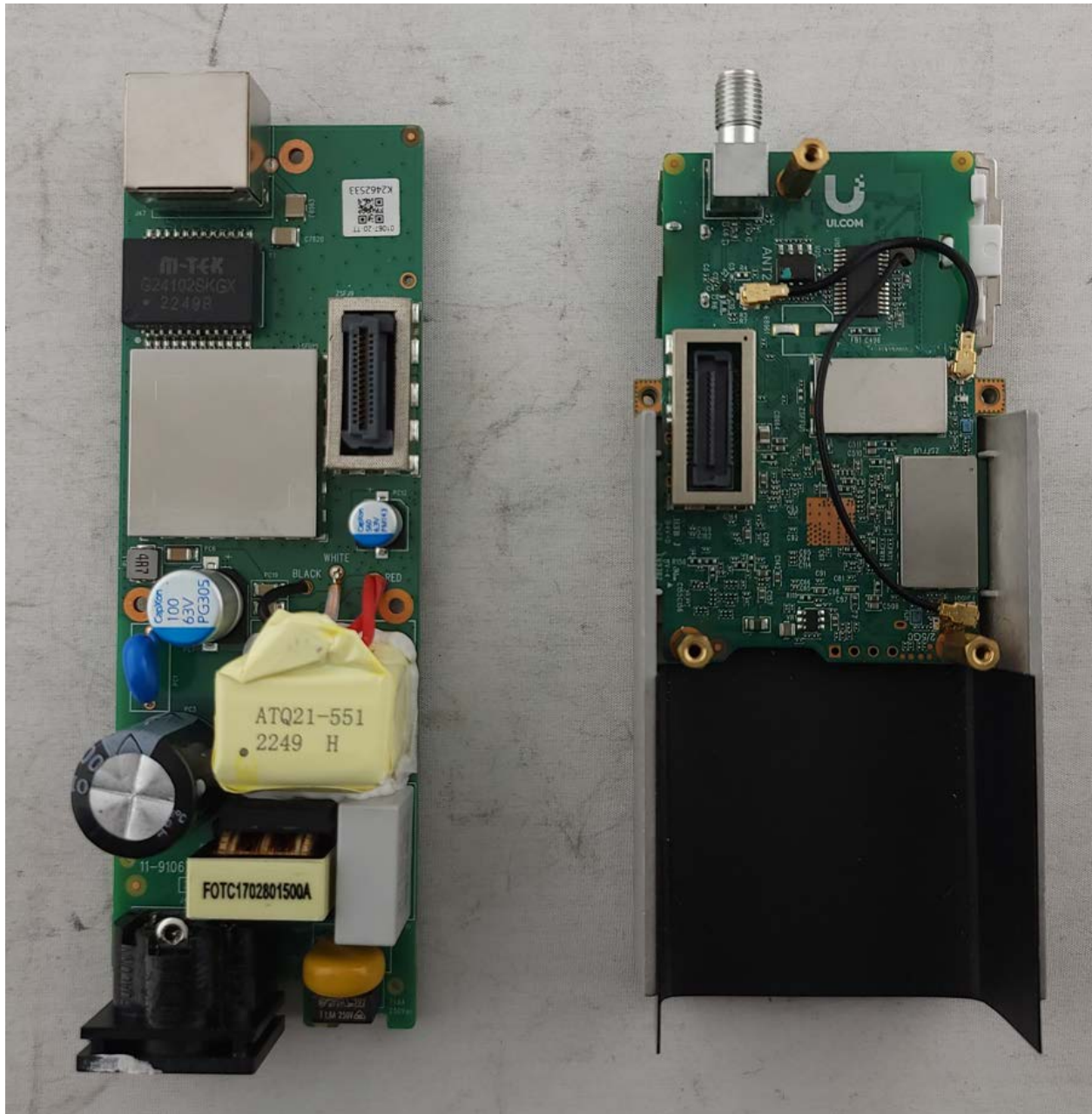




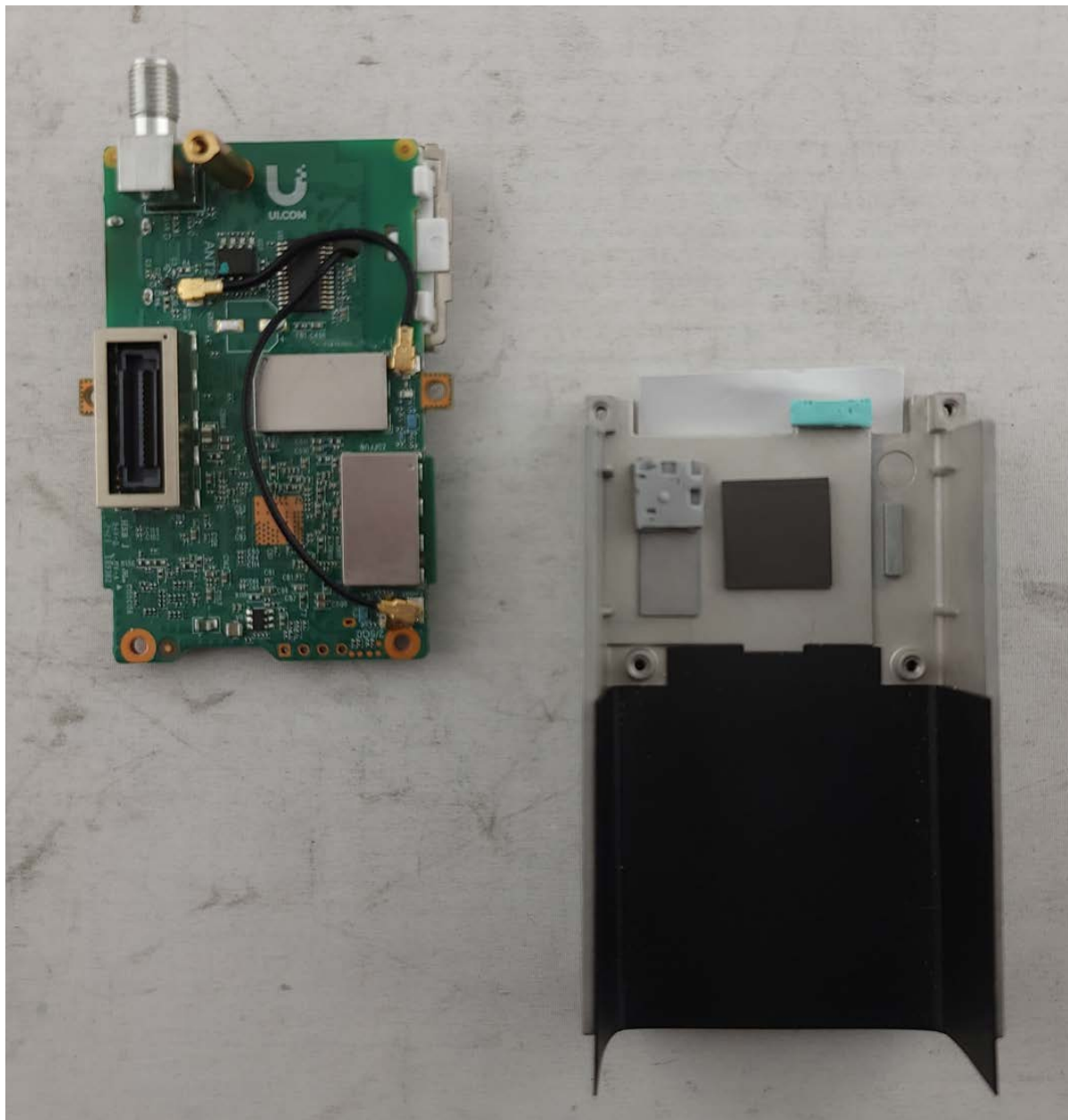
Photograph 1: Inside View with Front Cover Off



Photograph 2: Internal View with Back Cover Off



Photograph 3: Internal View of the PoE/Power PCB and RF/Transmitter PCB



Photograph 4: Internal View RF/Transmitter PCB with Heat Sink Off





Photograph 5: Top Side Of RF/Transmitter PCB with Cans On