

**MAGIN GROUP CO., LIMITED**

Add: 2/F, No.2 Chuangye 4th Road, Zhangbei, Ailian, Longcheng,  
Longgang, SHENZHEN, China

Date: 2025-2-7

FCC ID: 2BML2-MG10

Dear Sir/Madam,

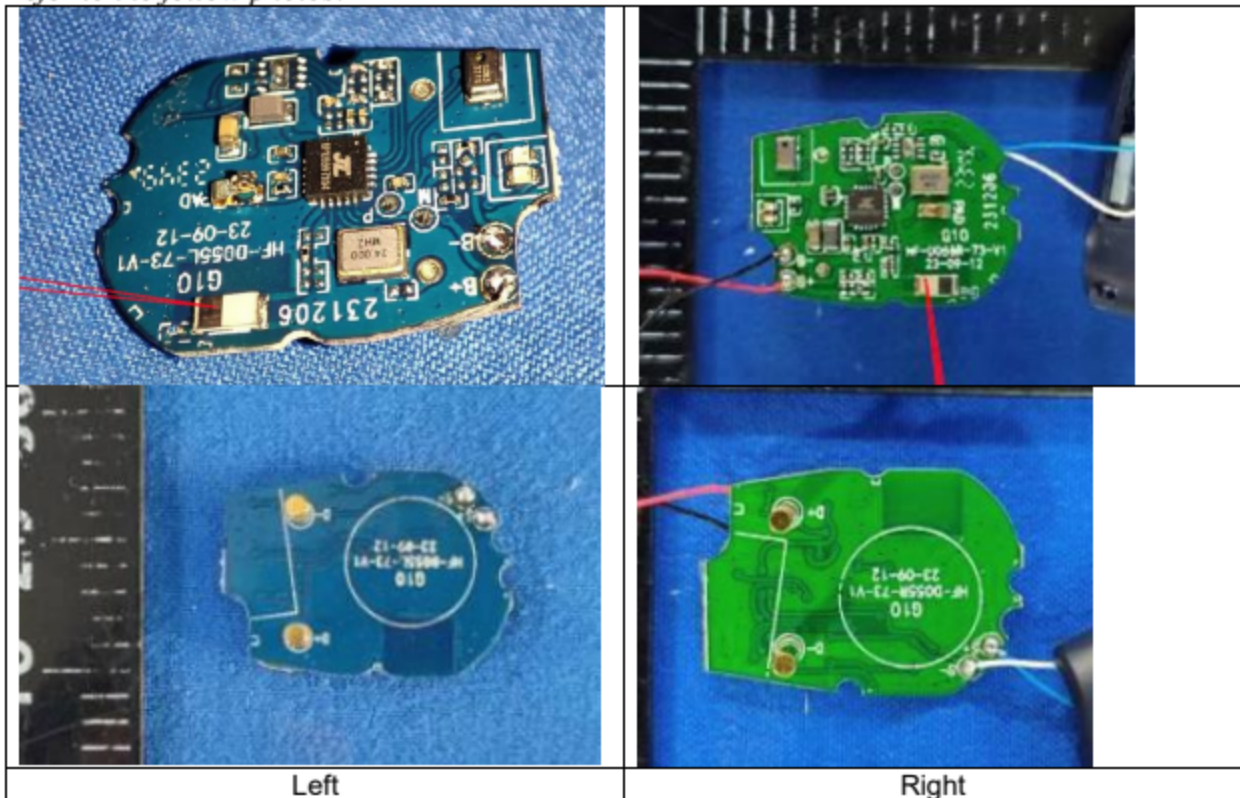
We, **MAGIN GROUP CO., LIMITED** Hereby declares the following statement for Federal Communications Commission, PCB board, circuit, structure and internal of these models are same, Only model number is different for these models:

Product name: Wireless Earphones

Model no.: G10, G20, G30, G40, G50, Adesso Xtream T4

Additionally, for each model above, the left&right earphones are the same schematic circuits, but the locations of components are different.

Refer to the follow photos:



|   |
|---|
| <b>MAGIN GROUP CO., LIMITED</b>   |
| Add: 2/F, No.2 Chuangye 4th Road, Zhangbei, Ailian, Longcheng,<br>Longgang, SHENZHEN, China |

Sincerely,

*Wendy Lin*

Name/Title : Wendy Lin/Sales  
Company: MAGIN GROUP CO., LIMITED  
Address: 2/F, No.2 Chuangye 4th Road, Zhangbei, Ailian, Longcheng,  
Longgang, SHENZHEN, China  
Phone: +86 13798599886  
Fax: +86 13798599886  
E-Mail: sales008@magingroup.cn