

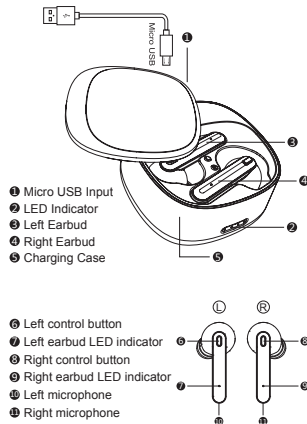
BLUETOOTH EARPHONE



INSTRUCTION MANUAL

FCC ID: 2APYY-AF0045

About Earbuds:



Charging the Case:

1. Insert the charging cable into the Micro USB input port & the LED indicator will turn on blue.
2. After charging completed, the LED indicator will fully turn on blue.

Charging the earbuds:

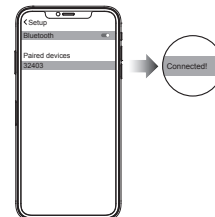
1. Put the earbuds on the charging case and the LED indicator will turn on blue when it is charging.
2. After charging completed, the LED indicator will fully turn on blue.

NOTE: In case of low battery, the speaker volume will lower down & you will hear a warning tone from the speaker indicating low battery.

Pairing for music/phone call

1. Turn on the earbuds by long pressing button for about 3 seconds. You will hear a voice from the speaker along with the blue and red indicator flashing to indicate power on.
2. Turn on your device and activate the Bluetooth function.

3. Search for Bluetooth name "32403" and click to pair. You will hear a voice from earbuds. Press the button to pause and press twice to choose for next song. You just need to press button to answer the call.
4. Turn off the earbuds by pressing button for around 4 seconds and you will hear a voice indicating Power off.



Note:

1. Bluetooth connection and transmission may be affected by the surrounding environment like tress, metal and some other materials. They can absorb or block the signal, so the distance of data transmission may be influenced as well.
2. Fully charge the device while using for the first time.
(when the battery gets lowered, the sound will not be as good as the sound in normal case.)
3. Do not expose the earbuds into the high temperature environment.

Specifications:

Item No.: 32403

Charging case

Capacity (Charging case): 400mAh/3.7V(1.48Wh)

Input: 5V/400mA (Charging case)

Charging time: 1.5 hours

After fully charged, it can be charged ear buds 3 times

Ear buds

Capacity (Earbuds): 35mAh/3.7V(0.1295Wh)

Input: 5V/40mA (Earbuds)

Charging time: 1hour

Play time: 2.5hours

FCC Warning Statement

Changes or modifications not expressly approved by the party responsible for compliance could void the user's authority to operate the equipment. This equipment has been tested and found to comply with the limits for a Class B digital device, pursuant to Part 15 of the FCC Rules.

These limits are designed to provide reasonable protection against harmful interference in a residential installation. This equipment generates uses and can radiate radio frequency energy and, if not installed and used in accordance with the instructions, may cause harmful interference to radio communications. However, there is no guarantee that interference will not occur in a particular installation. If this equipment does cause harmful interference to radio or television reception, which can be determined by turning the equipment off and on, the user is encouraged to try to correct the interference by one or more of the following measures:

- Reorient or relocate the receiving antenna.
- Increase the separation between the equipment and receiver.
- Connect the equipment into an outlet on a circuit different from that to which the receiver is connected.
- Consult the dealer or an experienced radio/TV technician for help.

This device complies with part 15 of the FCC rules. Operation is subject to the following two conditions

- (1) this device may not cause harmful interference, and
- (2) this device must accept any interference received, including interference that may cause undesired operation.



Made in China