

## 1. Antenna Description:

Antenna type	PCB antenna
Model	EP-0168
Frequency range	2400-2500MHz
Manufacturer	Guangdong Jingge New Energy Technology Co.,Ltd
Address	NO.201, TongFu Road, Fenggang, Fenggang Town, Dongguan, Guangdong, China
ANT Peak Gain	1.05 dBi

## 2. Antenna Photo:

Length:14.39mm  
Width:5.30mm



### 3. Test Equipment & Conditions

#### 3.1 Test instrument

VSWR is tested using Agilent E5071B connected to a hand mechanism, and the status is free space.

#### 3.2 Test environment and methods

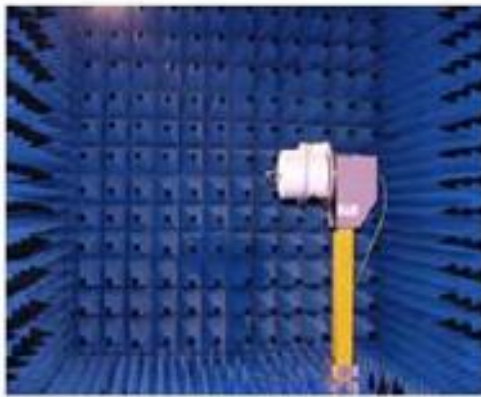
Dark room specifications: ETS-743

TD-SCDMA test equipment: StarPoint SP6010/Agilent 8960

LTE-TDD/FDD-SCDMA test equipment: StarPoint SP8011/CMW500

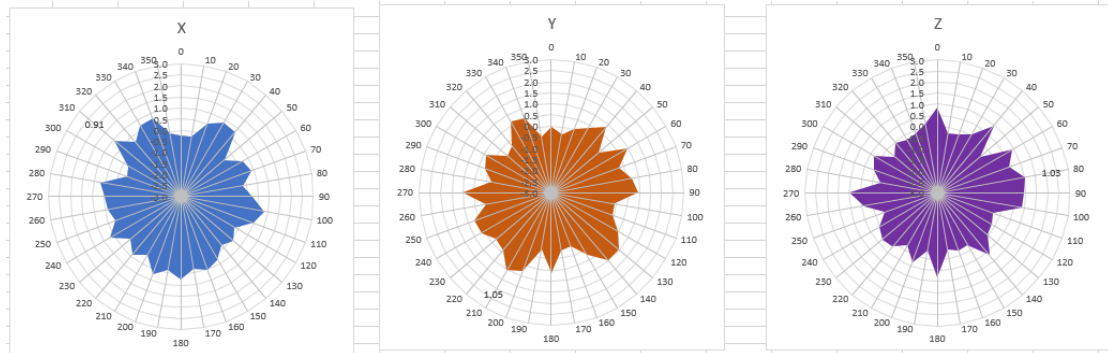
WCDMA/GSM/CDMA test equipment: Agilent 8960

Passive efficiency testing equipment: Agilent Technologies E5071B

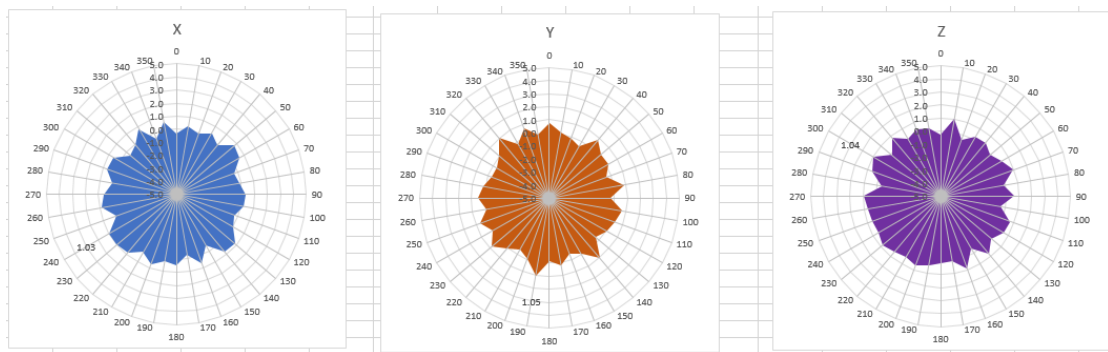


## 4 . Antenna Radiation Pattern

2400MHz



2450MHz



2500MHz

