

# Plot No.1

Measurement performed on November 20, 2024 at 13:49

## Device Under Test

Manufacturer	Model	Dimensions[mm]	Speaker Position [mm]
		146.2 x 71.8 x 7.5	144.3

## Hardware Setup

Probe Name	Probe Calibration Date	DAE Name	DAE Calibration Date
EF3DV3 - SN4050	March 06, 2024	DAE4 Sn1691	April 19, 2024

## Communication Systems

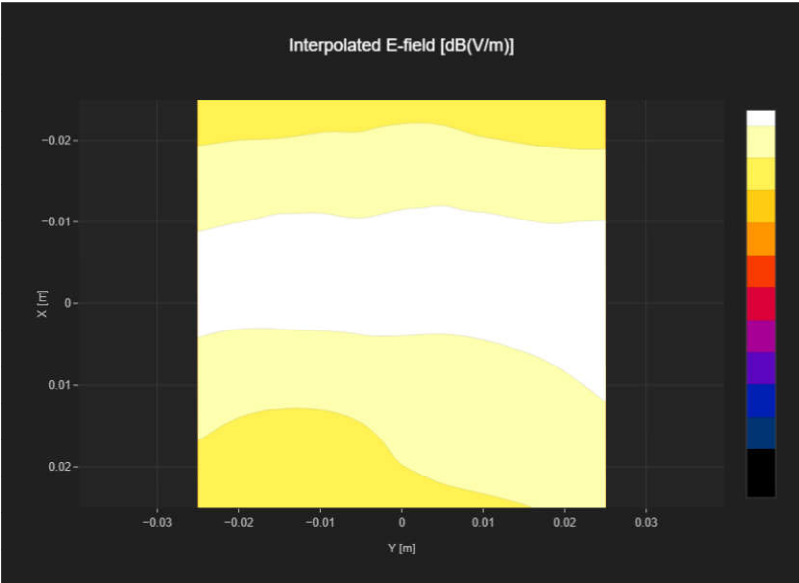
Band Name	Communication Systems Name	Channel	Frequency [MHz]
GSM 850	GSM-FDD (TDMA, GMSK)	128	824.2

## Grid Settings

Extent X [mm]	Extent Y [mm]	Step X [mm]	Step Y [mm]	Distance [mm]
50.0	50.0	10.0	10.0	15.0

## Results

E <sub>max</sub> [dB(V/m)]	E <sub>avg50x50</sub> max [dB(V/m)]	MIF [dB]	RFail [dB(V/m)]
17.09	15.68	3.63	19.31



# Plot No.2

Measurement performed on November 20, 2024 at 13:55

## Device Under Test

Manufacturer	Model	Dimensions[mm]	Speaker Position [mm]
		146.2 x 71.8 x 7.5	144.3

## Hardware Setup

Probe Name	Probe Calibration Date	DAE Name	DAE Calibration Date
EF3DV3 - SN4050	March 06, 2024	DAE4 Sn1691	April 19, 2024

## Communication Systems

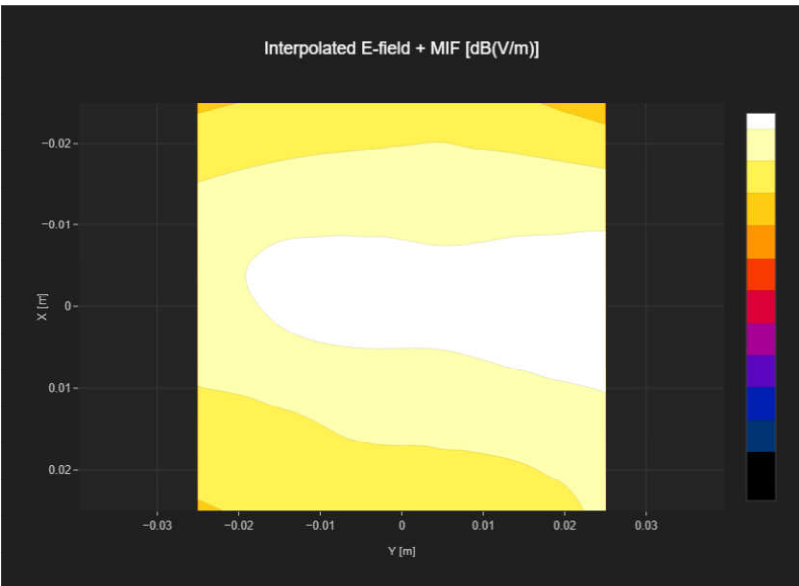
Band Name	Communication Systems Name	Channel	Frequency [MHz]
GSM 850	GSM-FDD (TDMA, GMSK)	189	836.4

## Grid Settings

Extent X [mm]	Extent Y [mm]	Step X [mm]	Step Y [mm]	Distance [mm]
50.0	50.0	10.0	10.0	15.0

## Results

E <sub>max</sub> [dB(V/m)]	E <sub>avg50x50</sub> max [dB(V/m)]	MIF [dB]	RFail [dB(V/m)]
17.67	16.23	3.63	19.86



# Plot No.3

Measurement performed on November 20, 2024 at 13:58

## Device Under Test

Manufacturer	Model	Dimensions[mm]	Speaker Position [mm]
		146.2 x 71.8 x 7.5	144.3

## Hardware Setup

Probe Name	Probe Calibration Date	DAE Name	DAE Calibration Date
EF3DV3 - SN4050	March 06, 2024	DAE4 Sn1691	April 19, 2024

## Communication Systems

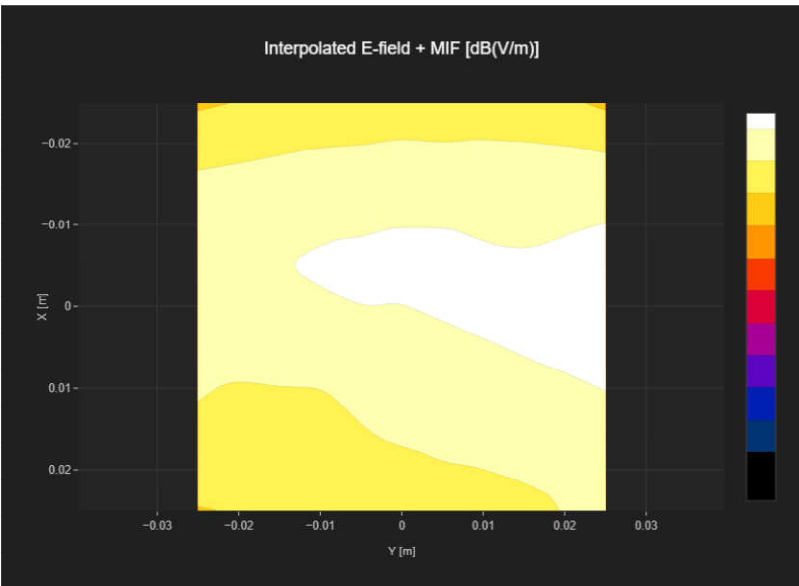
Band Name	Communication Systems Name	Channel	Frequency [MHz]
GSM 850	GSM-FDD (TDMA, GMSK)	251	848.8

## Grid Settings

Extent X [mm]	Extent Y [mm]	Step X [mm]	Step Y [mm]	Distance [mm]
50.0	50.0	10.0	10.0	15.0

## Results

E <sub>max</sub> [dB(V/m)]	E <sub>avg50x50</sub> max [dB(V/m)]	MIF [dB]	RFail [dB(V/m)]
17.68	16.41	3.63	20.04



# Plot No.4

Measurement performed on November 20, 2024 at 22:41

## Device Under Test

Manufacturer	Model	Dimensions[mm]	Speaker Position [mm]
		146.2 x 71.8 x 7.5	144.3

## Hardware Setup

Probe Name	Probe Calibration Date	DAE Name	DAE Calibration Date
EF3DV3 - SN4050	March 06, 2024	DAE4 Sn1691	April 19, 2024

## Communication Systems

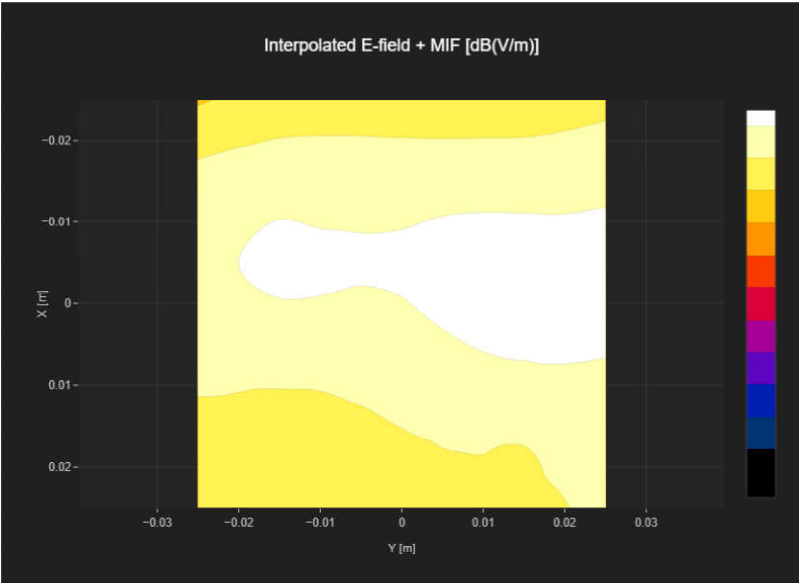
Band Name	Communication Systems Name	Channel	Frequency [MHz]
GSM 850	GSM-FDD (TDMA, GMSK)	251	848.8

## Grid Settings

Extent X [mm]	Extent Y [mm]	Step X [mm]	Step Y [mm]	Distance [mm]
50.0	50.0	10.0	10.0	15.0

## Results

E <sub>max</sub> [dB(V/m)]	E <sub>avg50x50 max</sub> [dB(V/m)]	MIF [dB]	RFail [dB(V/m)]
17.56	15.9	3.63	19.53



# Plot No.5

Measurement performed on November 20, 2024 at 14:03

## Device Under Test

Manufacturer	Model	Dimensions[mm]	Speaker Position [mm]
		146.2 x 71.8 x 7.5	144.3

## Hardware Setup

Probe Name	Probe Calibration Date	DAE Name	DAE Calibration Date
EF3DV3 - SN4050	March 06, 2024	DAE4 Sn1691	April 19, 2024

## Communication Systems

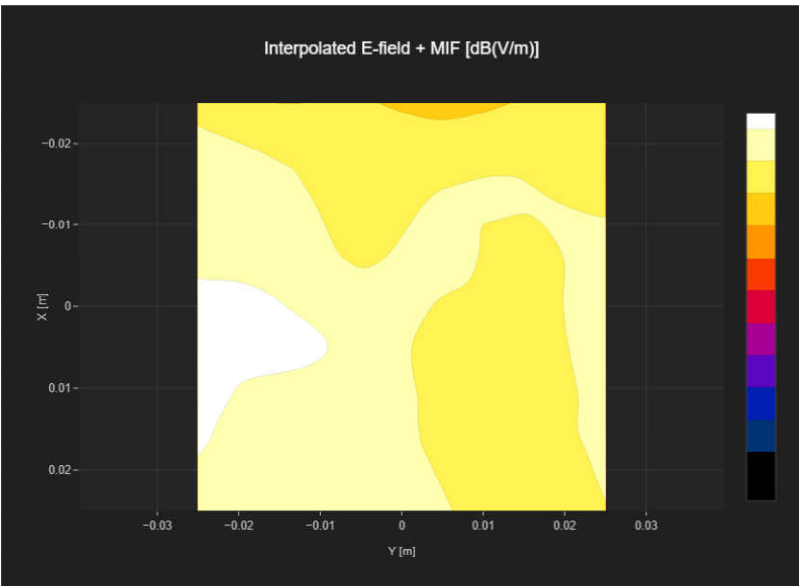
Band Name	Communication Systems Name	Channel	Frequency [MHz]
PCS 1900	GSM-FDD (TDMA, GMSK)	512	1850.2

## Grid Settings

Extent X [mm]	Extent Y [mm]	Step X [mm]	Step Y [mm]	Distance [mm]
50.0	50.0	10.0	10.0	15.0

## Results

E <sub>max</sub> [dB(V/m)]	E <sub>avg50x50</sub> max [dB(V/m)]	MIF [dB]	RFail [dB(V/m)]
11.81	11.5	3.63	15.13



# Plot No.6

Measurement performed on November 20, 2024 at 14:08

## Device Under Test

Manufacturer	Model	Dimensions[mm]	Speaker Position [mm]
		146.2 x 71.8 x 7.5	144.3

## Hardware Setup

Probe Name	Probe Calibration Date	DAE Name	DAE Calibration Date
EF3DV3 - SN4050	March 06, 2024	DAE4 Sn1691	April 19, 2024

## Communication Systems

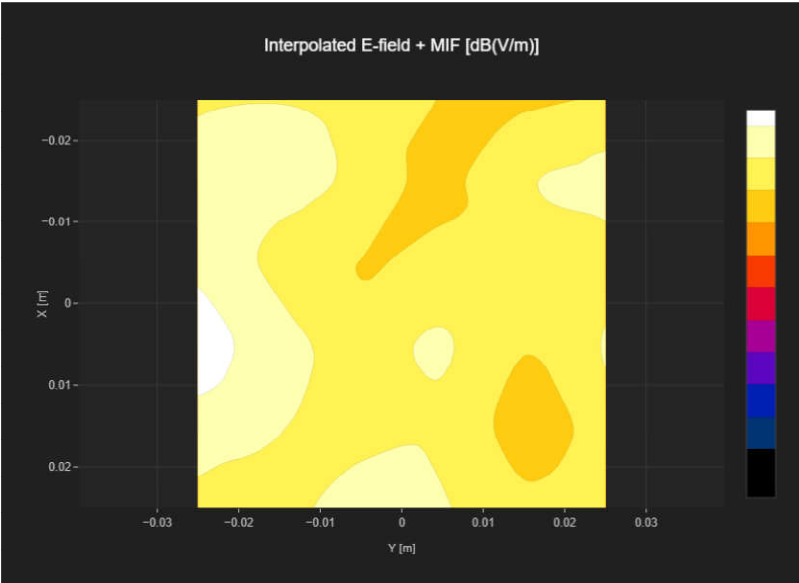
Band Name	Communication Systems Name	Channel	Frequency [MHz]
PCS 1900	GSM-FDD (TDMA, GMSK)	661	1880.0

## Grid Settings

Extent X [mm]	Extent Y [mm]	Step X [mm]	Step Y [mm]	Distance [mm]
50.0	50.0	10.0	10.0	15.0

## Results

E <sub>max</sub> [dB(V/m)]	E <sub>avg50x50</sub> max [dB(V/m)]	MIF [dB]	RFail [dB(V/m)]
11.93	10.72	3.63	14.35



# Plot No.7

Measurement performed on November 20, 2024 at 14:11

## Device Under Test

Manufacturer	Model	Dimensions[mm]	Speaker Position [mm]
		146.2 x 71.8 x 7.5	144.3

## Hardware Setup

Probe Name	Probe Calibration Date	DAE Name	DAE Calibration Date
EF3DV3 - SN4050	March 06, 2024	DAE4 Sn1691	April 19, 2024

## Communication Systems

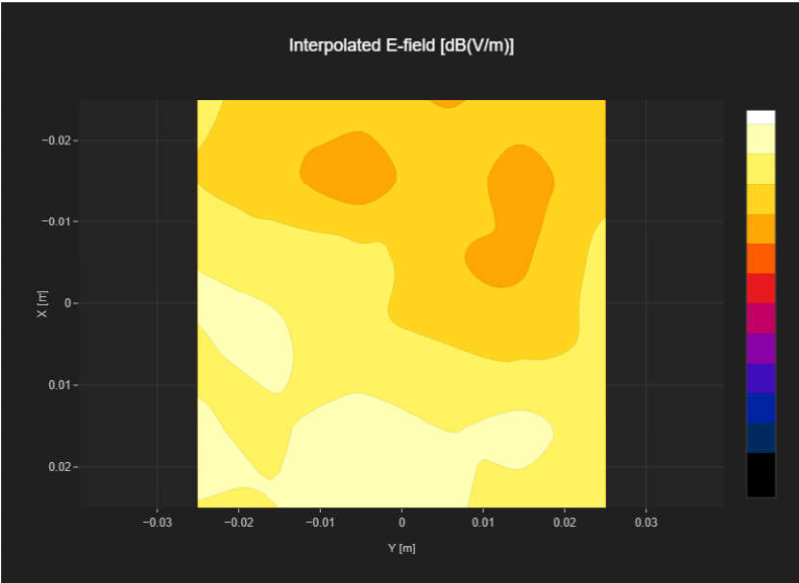
Band Name	Communication Systems Name	Channel	Frequency [MHz]
PCS 1900	GSM-FDD (TDMA, GMSK)	810	1909.8

## Grid Settings

Extent X [mm]	Extent Y [mm]	Step X [mm]	Step Y [mm]	Distance [mm]
50.0	50.0	10.0	10.0	15.0

## Results

E <sub>max</sub> [dB(V/m)]	E <sub>avg50x50</sub> max [dB(V/m)]	MIF [dB]	RFail [dB(V/m)]
11.98	10.03	3.63	13.66



# Plot No.8

Measurement performed on November 20, 2024 at 16:19

## Device Under Test

Manufacturer	Model	Dimensions[mm]	Speaker Position [mm]
		146.2 x 71.8 x 7.5	144.3

## Hardware Setup

Probe Name	Probe Calibration Date	DAE Name	DAE Calibration Date
EF3DV3 - SN4050	March 06, 2024	DAE4 Sn1691	April 19, 2024

## Communication Systems

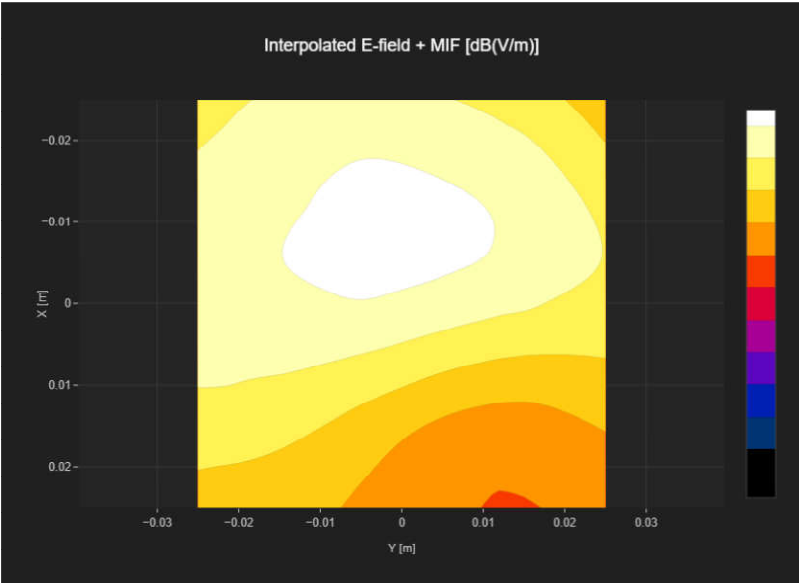
Band Name	Communication Systems Name	Channel	Frequency [MHz]
Band 41	LTE-TDD (SC-FDMA, 1 RB, 20 MHz, 16-QAM)	39750	2506.0

## Grid Settings

Extent X [mm]	Extent Y [mm]	Step X [mm]	Step Y [mm]	Distance [mm]
50.0	50.0	10.0	10.0	15.0

## Results

E <sub>max</sub> [dB(V/m)]	E <sub>avg50x50 max</sub> [dB(V/m)]	MIF [dB]	RFail [dB(V/m)]
30.18	27.53	-1.44	26.09





# Plot No.9

Measurement performed on November 20, 2024 at 22:59

## Device Under Test

Manufacturer	Model	Dimensions[mm]	Speaker Position [mm]
		146.2 x 71.8 x 7.5	144.3

## Hardware Setup

Probe Name	Probe Calibration Date	DAE Name	DAE Calibration Date
EF3DV3 - SN4050	March 06, 2024	DAE4 Sn1691	April 19, 2024

## Communication Systems

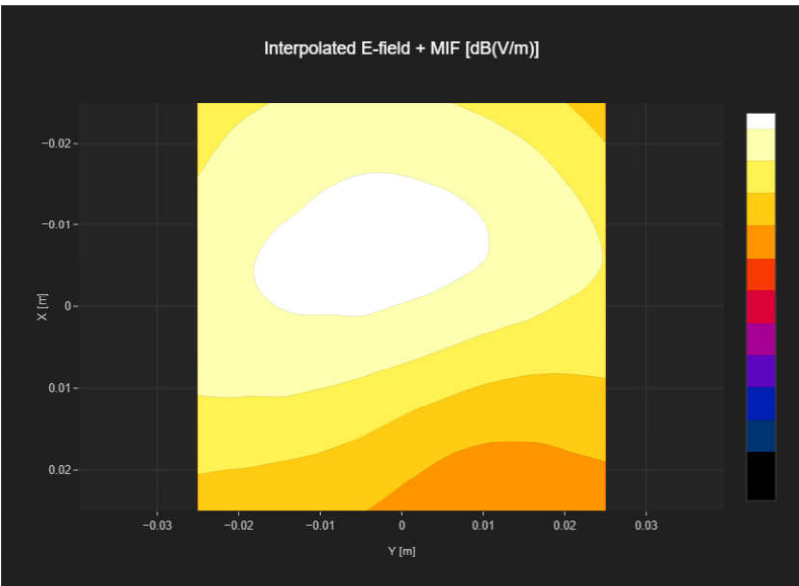
Band Name	Communication Systems Name	Channel	Frequency [MHz]
Band 41	LTE-TDD (SC-FDMA, 1 RB, 20 MHz, 16-QAM)	39750	2506.0

## Grid Settings

Extent X [mm]	Extent Y [mm]	Step X [mm]	Step Y [mm]	Distance [mm]
50.0	50.0	10.0	10.0	15.0

## Results

E <sub>max</sub> [dB(V/m)]	E <sub>avg50x50 max</sub> [dB(V/m)]	MIF [dB]	RFail [dB(V/m)]
28.53	26.1	-1.44	24.66



# Plot No.10

Measurement performed on November 20, 2024 at 16:22

## Device Under Test

Manufacturer	Model	Dimensions[mm]	Speaker Position [mm]
		146.2 x 71.8 x 7.5	144.3

## Hardware Setup

Probe Name	Probe Calibration Date	DAE Name	DAE Calibration Date
EF3DV3 - SN4050	March 06, 2024	DAE4 Sn1691	April 19, 2024

## Communication Systems

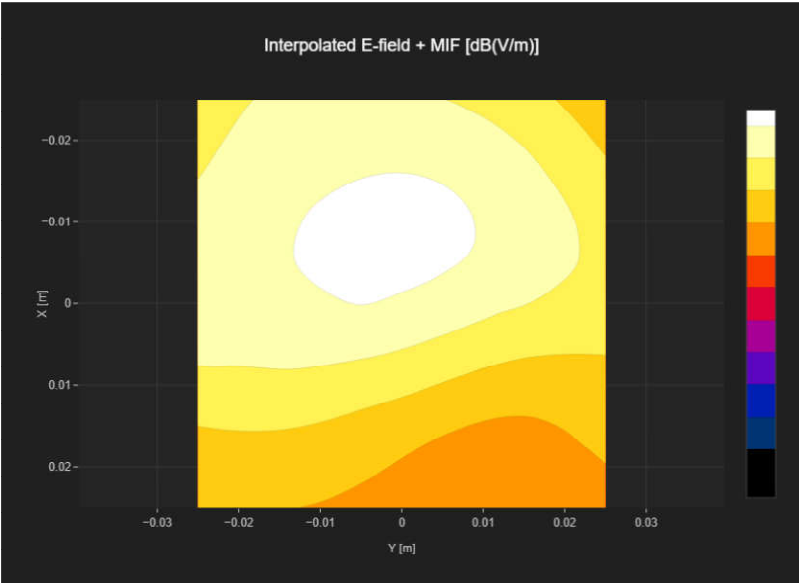
Band Name	Communication Systems Name	Channel	Frequency [MHz]
Band 41	LTE-TDD (SC-FDMA, 1 RB, 20 MHz, 16-QAM)	40185	2549.5

## Grid Settings

Extent X [mm]	Extent Y [mm]	Step X [mm]	Step Y [mm]	Distance [mm]
50.0	50.0	10.0	10.0	15.0

## Results

E <sub>max</sub> [dB(V/m)]	E <sub>avg50x50 max</sub> [dB(V/m)]	MIF [dB]	RFail [dB(V/m)]
30.12	27.38	-1.44	25.94



# Plot No.11

Measurement performed on November 20, 2024 at 16:32

## Device Under Test

Manufacturer	Model	Dimensions[mm]	Speaker Position [mm]
		146.2 x 71.8 x 7.5	144.3

## Hardware Setup

Probe Name	Probe Calibration Date	DAE Name	DAE Calibration Date
EF3DV3 - SN4050	March 06, 2024	DAE4 Sn1691	April 19, 2024

## Communication Systems

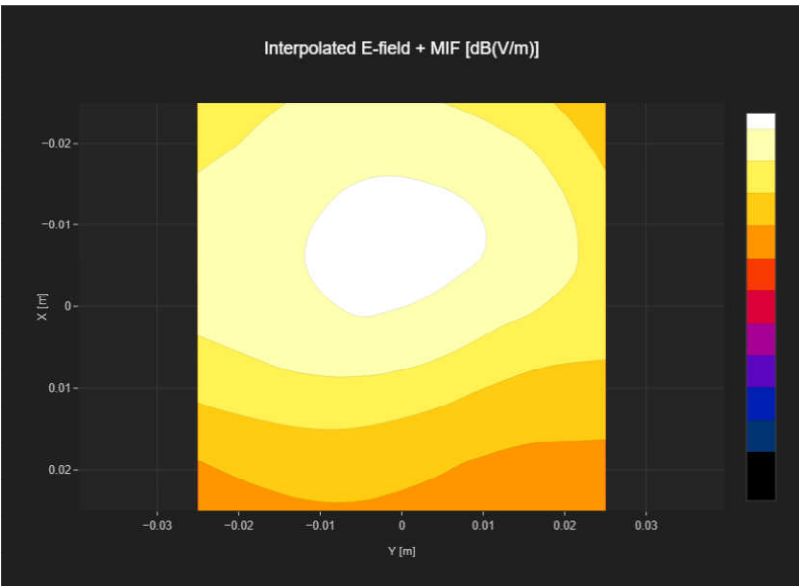
Band Name	Communication Systems Name	Channel	Frequency [MHz]
Band 41	LTE-TDD (SC-FDMA, 1 RB, 20 MHz, 16-QAM)	40620	2593.0

## Grid Settings

Extent X [mm]	Extent Y [mm]	Step X [mm]	Step Y [mm]	Distance [mm]
50.0	50.0	10.0	10.0	15.0

## Results

E <sub>max</sub> [dB(V/m)]	E <sub>avg50x50</sub> max [dB(V/m)]	MIF [dB]	RFail [dB(V/m)]
29.8	27.11	-1.44	25.67



# Plot No.12

Measurement performed on November 20, 2024 at 16:35

## Device Under Test

Manufacturer	Model	Dimensions[mm]	Speaker Position [mm]
		146.2 x 71.8 x 7.5	144.3

## Hardware Setup

Probe Name	Probe Calibration Date	DAE Name	DAE Calibration Date
EF3DV3 - SN4050	March 06, 2024	DAE4 Sn1691	April 19, 2024

## Communication Systems

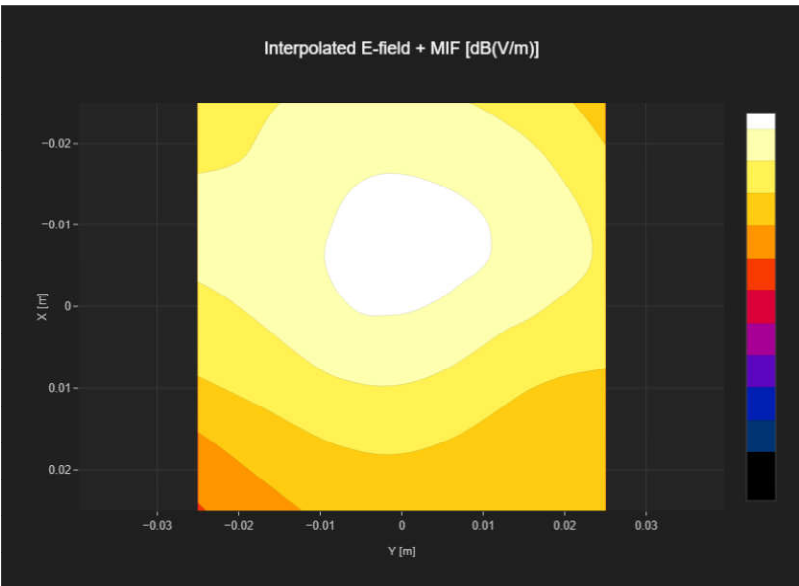
Band Name	Communication Systems Name	Channel	Frequency [MHz]
Band 41	LTE-TDD (SC-FDMA, 1 RB, 20 MHz, 16-QAM)	41055	2636.5

## Grid Settings

Extent X [mm]	Extent Y [mm]	Step X [mm]	Step Y [mm]	Distance [mm]
50.0	50.0	10.0	10.0	15.0

## Results

E <sub>max</sub> [dB(V/m)]	E <sub>avg50x50</sub> max [dB(V/m)]	MIF [dB]	RFail [dB(V/m)]
28.33	25.72	-1.44	24.28



# Plot No.13

Measurement performed on November 20, 2024 at 16:38

## Device Under Test

Manufacturer	Model	Dimensions[mm]	Speaker Position [mm]
		146.2 x 71.8 x 7.5	144.3

## Hardware Setup

Probe Name	Probe Calibration Date	DAE Name	DAE Calibration Date
EF3DV3 - SN4050	March 06, 2024	DAE4 Sn1691	April 19, 2024

## Communication Systems

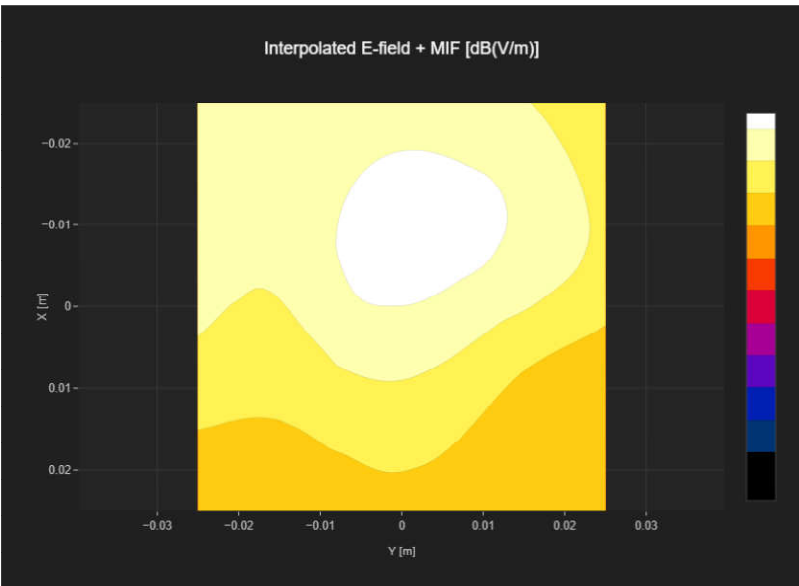
Band Name	Communication Systems Name	Channel	Frequency [MHz]
Band 41	LTE-TDD (SC-FDMA, 1 RB, 20 MHz, 16-QAM)	41490	2680.0

## Grid Settings

Extent X [mm]	Extent Y [mm]	Step X [mm]	Step Y [mm]	Distance [mm]
50.0	50.0	10.0	10.0	15.0

## Results

E <sub>max</sub> [dB(V/m)]	E <sub>avg50x50 max</sub> [dB(V/m)]	MIF [dB]	RFail [dB(V/m)]
25.24	22.78	-1.44	21.34



# Plot No.14

Measurement performed on November 20, 2024 at 14:24

## Device Under Test

Manufacturer	Model	Dimensions[mm]	Speaker Position [mm]
		146.2 x 71.8 x 7.5	144.3

## Hardware Setup

Probe Name	Probe Calibration Date	DAE Name	DAE Calibration Date
EF3DV3 - SN4050	March 06, 2024	DAE4 Sn1691	April 19, 2024

## Communication Systems

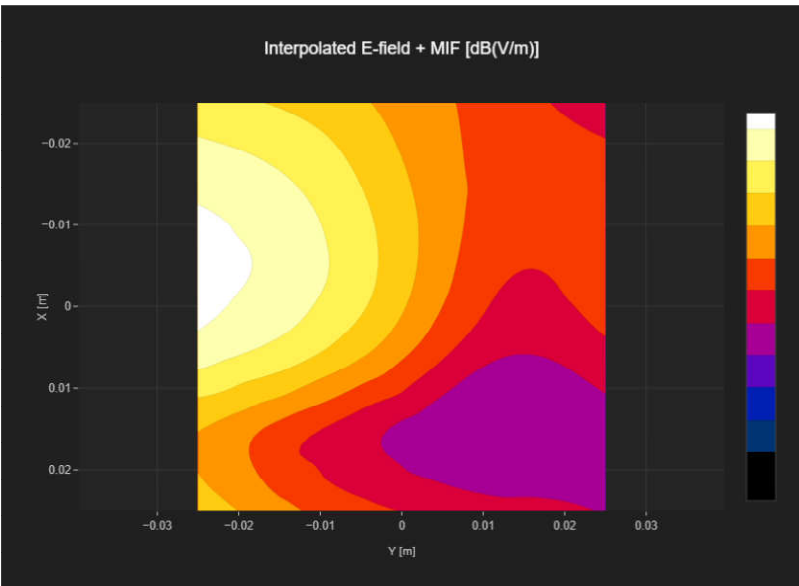
Band Name	Communication Systems Name	Channel	Frequency [MHz]
Band 41	LTE-TDD (SC-FDMA, 1 RB, 20 MHz, 16-QAM)	39750	2506.0

## Grid Settings

Extent X [mm]	Extent Y [mm]	Step X [mm]	Step Y [mm]	Distance [mm]
50.0	50.0	10.0	10.0	15.0

## Results

E <sub>max</sub> [dB(V/m)]	E <sub>avg50x50 max</sub> [dB(V/m)]	MIF [dB]	RFail [dB(V/m)]
28.87	22.5	-1.44	21.06



# Plot No.15

Measurement performed on November 20, 2024 at 14:27

## Device Under Test

Manufacturer	Model	Dimensions[mm]	Speaker Position [mm]
		146.2 x 71.8 x 7.5	144.3

## Hardware Setup

Probe Name	Probe Calibration Date	DAE Name	DAE Calibration Date
EF3DV3 - SN4050	March 06, 2024	DAE4 Sn1691	April 19, 2024

## Communication Systems

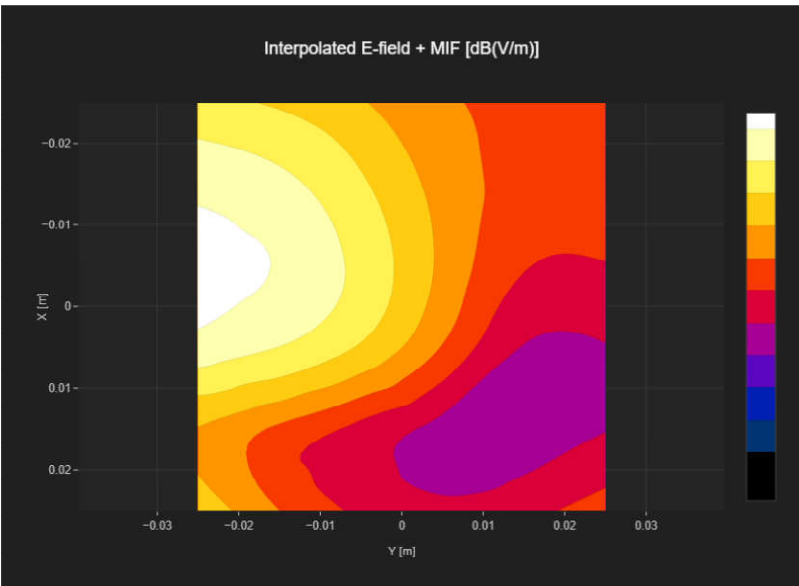
Band Name	Communication Systems Name	Channel	Frequency [MHz]
Band 41	LTE-TDD (SC-FDMA, 1 RB, 20 MHz, 16-QAM)	40185	2549.5

## Grid Settings

Extent X [mm]	Extent Y [mm]	Step X [mm]	Step Y [mm]	Distance [mm]
50.0	50.0	10.0	10.0	15.0

## Results

E <sub>max</sub> [dB(V/m)]	E <sub>avg50x50 max</sub> [dB(V/m)]	MIF [dB]	RFail [dB(V/m)]
29.36	23.24	-1.44	21.8



# Plot No.16

Measurement performed on November 20, 2024 at 14:36

## Device Under Test

Manufacturer	Model	Dimensions[mm]	Speaker Position [mm]
		146.2 x 71.8 x 7.5	144.3

## Hardware Setup

Probe Name	Probe Calibration Date	DAE Name	DAE Calibration Date
EF3DV3 - SN4050	March 06, 2024	DAE4 Sn1691	April 19, 2024

## Communication Systems

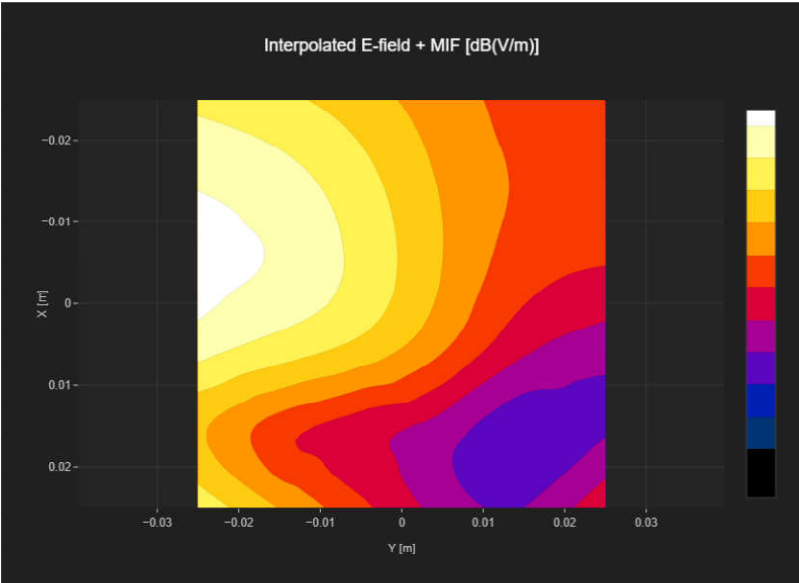
Band Name	Communication Systems Name	Channel	Frequency [MHz]
Band 41	LTE-TDD (SC-FDMA, 1 RB, 20 MHz, 16-QAM)	40620	2593.0

## Grid Settings

Extent X [mm]	Extent Y [mm]	Step X [mm]	Step Y [mm]	Distance [mm]
50.0	50.0	10.0	10.0	15.0

## Results

E <sub>max</sub> [dB(V/m)]	E <sub>avg50x50 max</sub> [dB(V/m)]	MIF [dB]	RFail [dB(V/m)]
28.91	22.85	-1.44	21.41





# Plot No.17

Measurement performed on November 20, 2024 at 14:39

## Device Under Test

Manufacturer	Model	Dimensions[mm]	Speaker Position [mm]
		146.2 x 71.8 x 7.5	144.3

## Hardware Setup

Probe Name	Probe Calibration Date	DAE Name	DAE Calibration Date
EF3DV3 - SN4050	March 06, 2024	DAE4 Sn1691	April 19, 2024

## Communication Systems

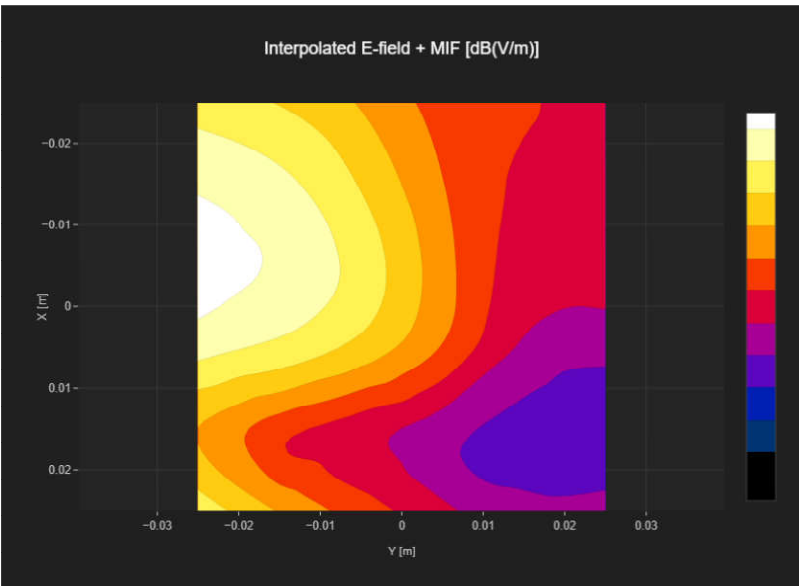
Band Name	Communication Systems Name	Channel	Frequency [MHz]
Band 41	LTE-TDD (SC-FDMA, 1 RB, 20 MHz, 16-QAM)	41055	2636.5

## Grid Settings

Extent X [mm]	Extent Y [mm]	Step X [mm]	Step Y [mm]	Distance [mm]
50.0	50.0	10.0	10.0	15.0

## Results

E <sub>max</sub> [dB(V/m)]	E <sub>avg50x50</sub> max [dB(V/m)]	MIF [dB]	RFail [dB(V/m)]
28.77	22.27	-1.44	20.83



# Plot No.18

Measurement performed on November 20, 2024 at 14:42

## Device Under Test

Manufacturer	Model	Dimensions[mm]	Speaker Position [mm]
		146.2 x 71.8 x 7.5	144.3

## Hardware Setup

Probe Name	Probe Calibration Date	DAE Name	DAE Calibration Date
EF3DV3 - SN4050	March 06, 2024	DAE4 Sn1691	April 19, 2024

## Communication Systems

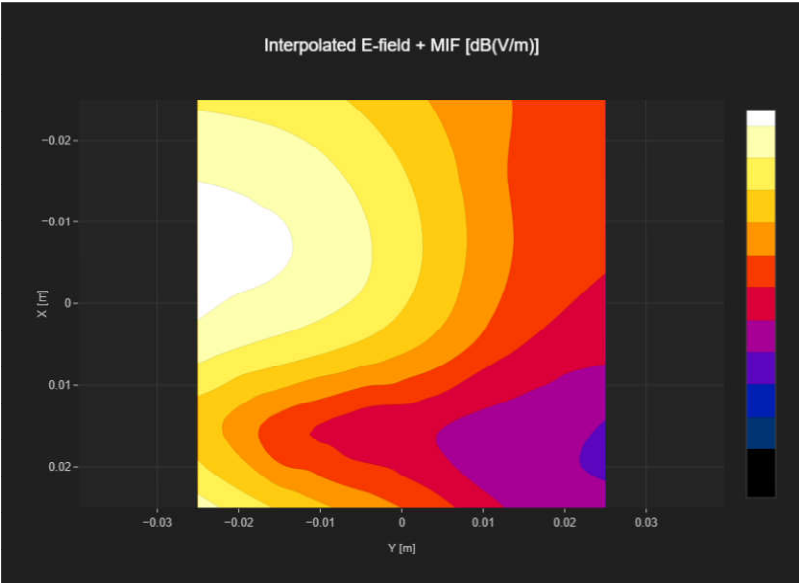
Band Name	Communication Systems Name	Channel	Frequency [MHz]
Band 41	LTE-TDD (SC-FDMA, 1 RB, 20 MHz, 16-QAM)	41490	2680.0

## Grid Settings

Extent X [mm]	Extent Y [mm]	Step X [mm]	Step Y [mm]	Distance [mm]
50.0	50.0	10.0	10.0	15.0

## Results

E <sub>max</sub> [dB(V/m)]	E <sub>avg50x50 max</sub> [dB(V/m)]	MIF [dB]	RFail [dB(V/m)]
27.83	22.32	-1.44	20.88



# Plot No.19

Measurement performed on November 20, 2024 at 21:42

## Device Under Test

Manufacturer	Model	Dimensions[mm]	Speaker Position [mm]
		146.2 x 71.8 x 7.5	144.3

## Hardware Setup

Probe Name	Probe Calibration Date	DAE Name	DAE Calibration Date
EF3DV3 - SN4050	March 06, 2024	DAE4 Sn1691	April 19, 2024

## Communication Systems

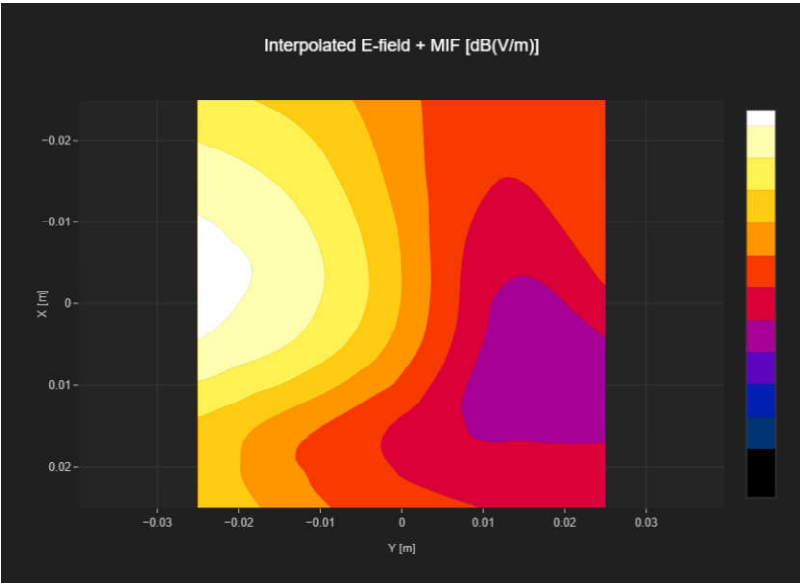
Band Name	Communication Systems Name	Channel	Frequency [MHz]
Band n41	5G NR (DFT-s-OFDM, 1 RB, 100 MHz, QPSK, 30 kHz)	509202	2546.01

## Grid Settings

Extent X [mm]	Extent Y [mm]	Step X [mm]	Step Y [mm]	Distance [mm]
50.0	50.0	10.0	10.0	15.0

## Results

E <sub>max</sub> [dB(V/m)]	E <sub>avg50x50 max</sub> [dB(V/m)]	MIF [dB]	RFail [dB(V/m)]
30.47	24.11	-1.64	22.47



# Plot No.20

Measurement performed on November 20, 2024 at 22:00

## Device Under Test

Manufacturer	Model	Dimensions[mm]	Speaker Position [mm]
		146.2 x 71.8 x 7.5	144.3

## Hardware Setup

Probe Name	Probe Calibration Date	DAE Name	DAE Calibration Date
EF3DV3 - SN4050	March 06, 2024	DAE4 Sn1691	April 19, 2024

## Communication Systems

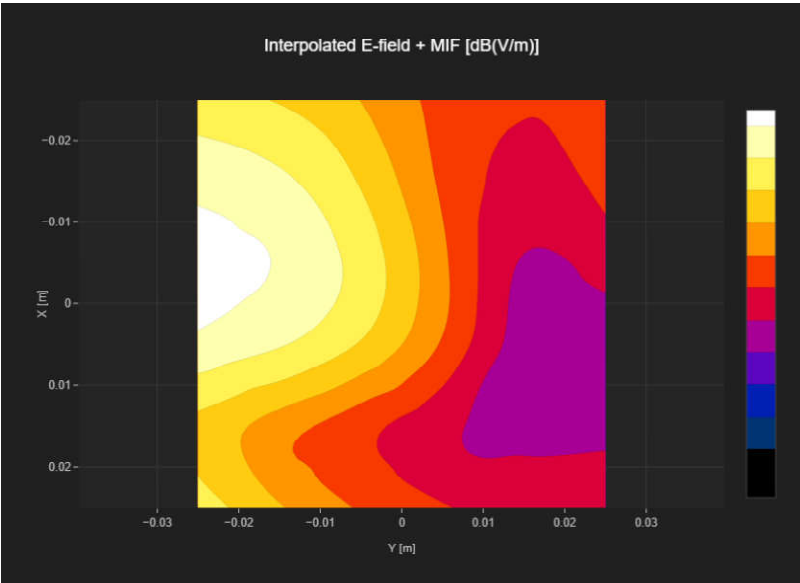
Band Name	Communication Systems Name	Channel	Frequency [MHz]
Band n41	5G NR (DFT-s-OFDM, 1 RB, 100 MHz, QPSK, 30 kHz)	518598	2592.99

## Grid Settings

Extent X [mm]	Extent Y [mm]	Step X [mm]	Step Y [mm]	Distance [mm]
50.0	50.0	10.0	10.0	15.0

## Results

E <sub>max</sub> [dB(V/m)]	E <sub>avg50x50 max</sub> [dB(V/m)]	MIF [dB]	RFail [dB(V/m)]
30.17	23.98	-1.64	22.34



# Plot No.21

Measurement performed on November 20, 2024 at 23:32

## Device Under Test

Manufacturer	Model	Dimensions[mm]	Speaker Position [mm]
		146.2 x 71.8 x 7.5	144.3

## Hardware Setup

Probe Name	Probe Calibration Date	DAE Name	DAE Calibration Date
EF3DV3 - SN4050	March 06, 2024	DAE4 Sn1691	April 19, 2024

## Communication Systems

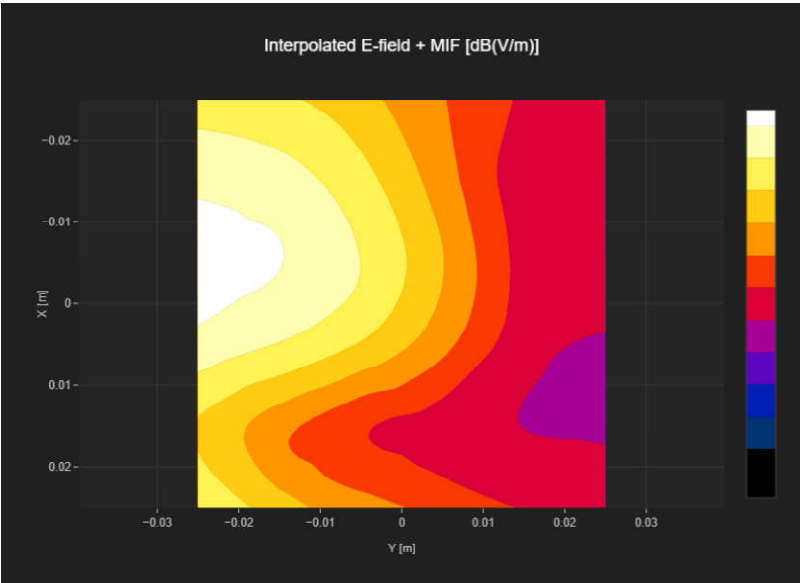
Band Name	Communication Systems Name	Channel	Frequency [MHz]
Band n41	5G NR (DFT-s-OFDM, 1 RB, 100 MHz, QPSK, 30 kHz)	528000	2640.0

## Grid Settings

Extent X [mm]	Extent Y [mm]	Step X [mm]	Step Y [mm]	Distance [mm]
50.0	50.0	10.0	10.0	15.0

## Results

E <sub>max</sub> [dB(V/m)]	E <sub>avg50x50 max</sub> [dB(V/m)]	MIF [dB]	RFail [dB(V/m)]
29.32	23.5	-1.64	21.86



# Plot No.22

Measurement performed on November 20, 2024 at 15:12

## Device Under Test

Manufacturer	Model	Dimensions[mm]	Speaker Position [mm]
		146.2 x 71.8 x 7.5	144.3

## Hardware Setup

Probe Name	Probe Calibration Date	DAE Name	DAE Calibration Date
EF3DV3 - SN4050	March 06, 2024	DAE4 Sn1691	April 19, 2024

## Communication Systems

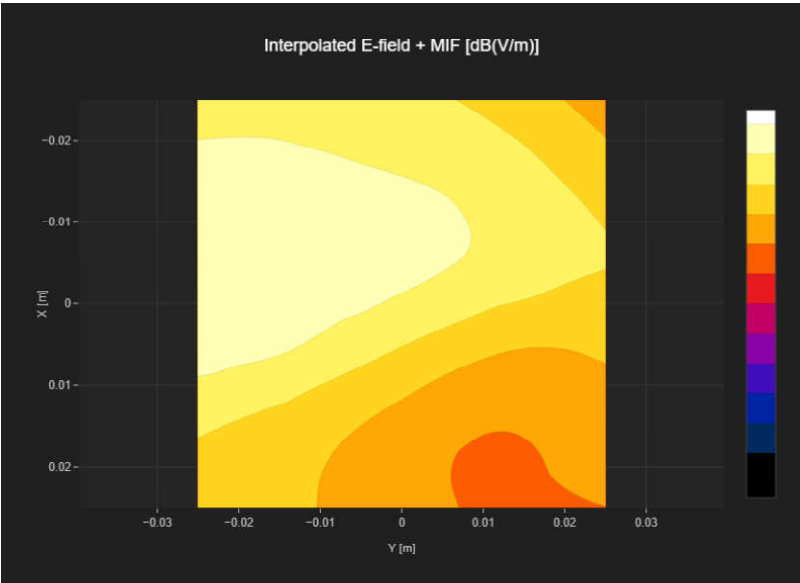
Band Name	Communication Systems Name	Channel	Frequency [MHz]
Band n41	5G NR (DFT-s-OFDM, 1 RB, 100 MHz, QPSK, 30 kHz)	509202	2546.01

## Grid Settings

Extent X [mm]	Extent Y [mm]	Step X [mm]	Step Y [mm]	Distance [mm]
50.0	50.0	10.0	10.0	15.0

## Results

E <sub>max</sub> [dB(V/m)]	E <sub>avg50x50 max</sub> [dB(V/m)]	MIF [dB]	RFail [dB(V/m)]
22.64	19.7	-1.64	18.06



# Plot No.23

Measurement performed on November 20, 2024 at 15:17

## Device Under Test

Manufacturer	Model	Dimensions[mm]	Speaker Position [mm]
		146.2 x 71.8 x 7.5	144.3

## Hardware Setup

Probe Name	Probe Calibration Date	DAE Name	DAE Calibration Date
EF3DV3 - SN4050	March 06, 2024	DAE4 Sn1691	April 19, 2024

## Communication Systems

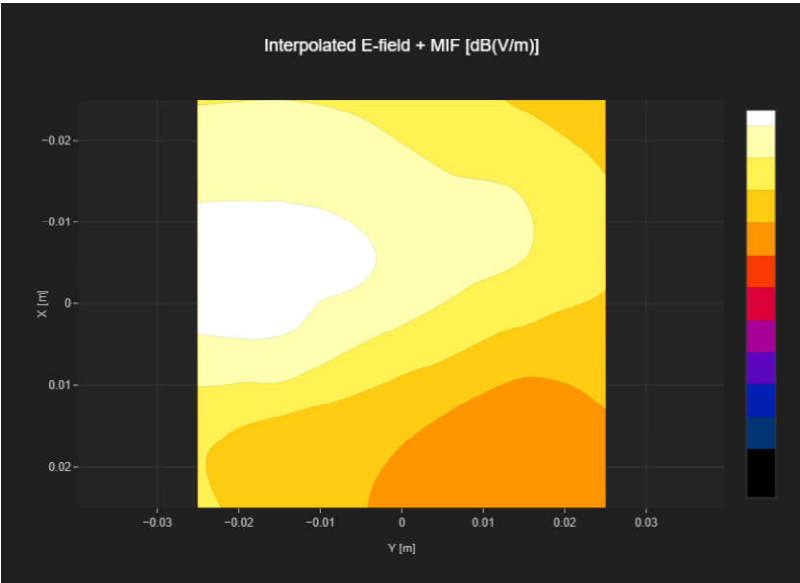
Band Name	Communication Systems Name	Channel	Frequency [MHz]
Band n41	5G NR (DFT-s-OFDM, 1 RB, 100 MHz, QPSK, 30 kHz)	518598	2592.99

## Grid Settings

Extent X [mm]	Extent Y [mm]	Step X [mm]	Step Y [mm]	Distance [mm]
50.0	50.0	10.0	10.0	15.0

## Results

E <sub>max</sub> [dB(V/m)]	E <sub>avg50x50 max</sub> [dB(V/m)]	MIF [dB]	RFail [dB(V/m)]
22.93	19.87	-1.64	18.23



# Plot No.24

Measurement performed on November 20, 2024 at 15:20

## Device Under Test

Manufacturer	Model	Dimensions[mm]	Speaker Position [mm]
		146.2 x 71.8 x 7.5	144.3

## Hardware Setup

Probe Name	Probe Calibration Date	DAE Name	DAE Calibration Date
EF3DV3 - SN4050	March 06, 2024	DAE4 Sn1691	April 19, 2024

## Communication Systems

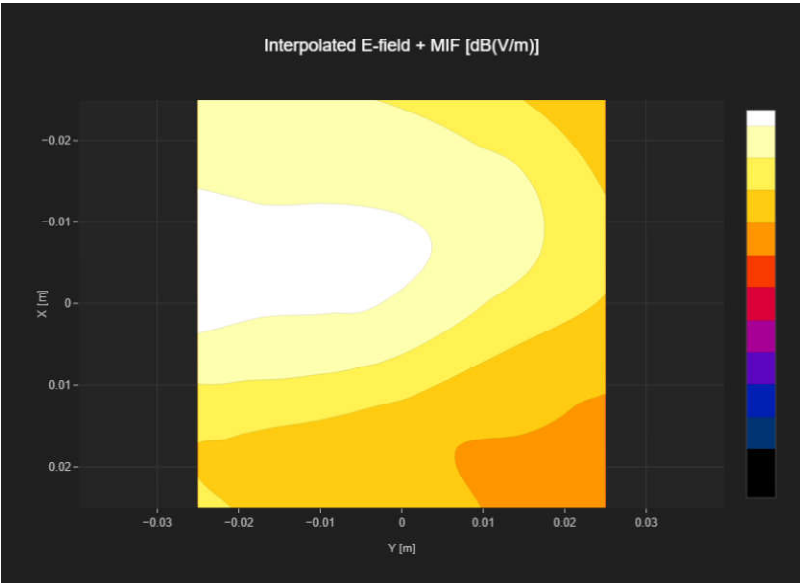
Band Name	Communication Systems Name	Channel	Frequency [MHz]
Band n41	5G NR (DFT-s-OFDM, 1 RB, 100 MHz, QPSK, 30 kHz)	528000	2640.0

## Grid Settings

Extent X [mm]	Extent Y [mm]	Step X [mm]	Step Y [mm]	Distance [mm]
50.0	50.0	10.0	10.0	15.0

## Results

E <sub>max</sub> [dB(V/m)]	E <sub>avg50x50 max</sub> [dB(V/m)]	MIF [dB]	RFail [dB(V/m)]
22.21	19.69	-1.64	18.05





# Plot No.25

Measurement performed on November 20, 2024 at 01:53

## Device Under Test

Manufacturer	Model	Dimensions[mm]	Speaker Position [mm]
		146.2 x 71.8 x 7.5	144.3

## Hardware Setup

Probe Name	Probe Calibration Date	DAE Name	DAE Calibration Date
EF3DV3 - SN4050	March 06, 2024	DAE4 Sn1691	April 19, 2024

## Communication Systems

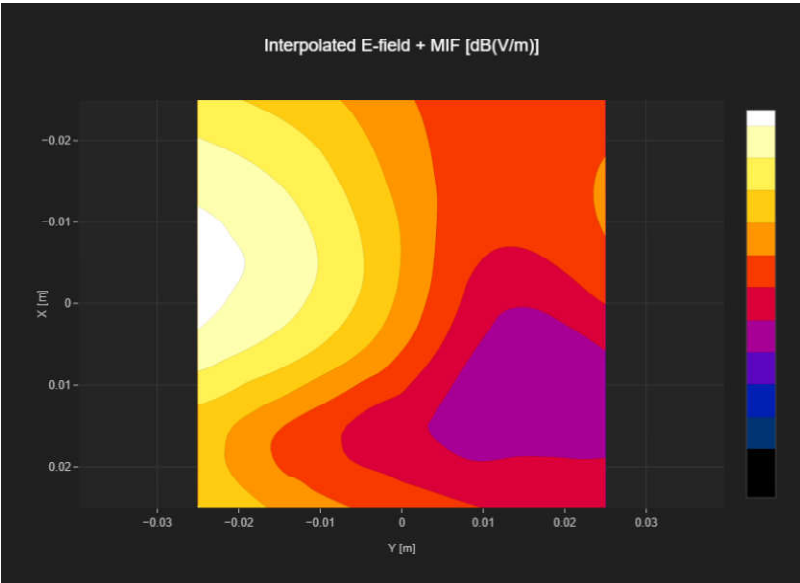
Band Name	Communication Systems Name	Channel	Frequency [MHz]
Band n41	5G NR (DFT-s-OFDM, 1 RB, 100 MHz, QPSK, 30 kHz)	509202	2546.01

## Grid Settings

Extent X [mm]	Extent Y [mm]	Step X [mm]	Step Y [mm]	Distance [mm]
50.0	50.0	10.0	10.0	15.0

## Results

E <sub>max</sub> [dB(V/m)]	E <sub>avg50x50</sub> max [dB(V/m)]	MIF [dB]	RFail [dB(V/m)]
30.0	23.51	-1.64	21.87



# Plot No.26

Measurement performed on November 20, 2024 at 01:45

## Device Under Test

Manufacturer	Model	Dimensions[mm]	Speaker Position [mm]
		146.2 x 71.8 x 7.5	144.3

## Hardware Setup

Probe Name	Probe Calibration Date	DAE Name	DAE Calibration Date
EF3DV3 - SN4050	March 06, 2024	DAE4 Sn1691	April 19, 2024

## Communication Systems

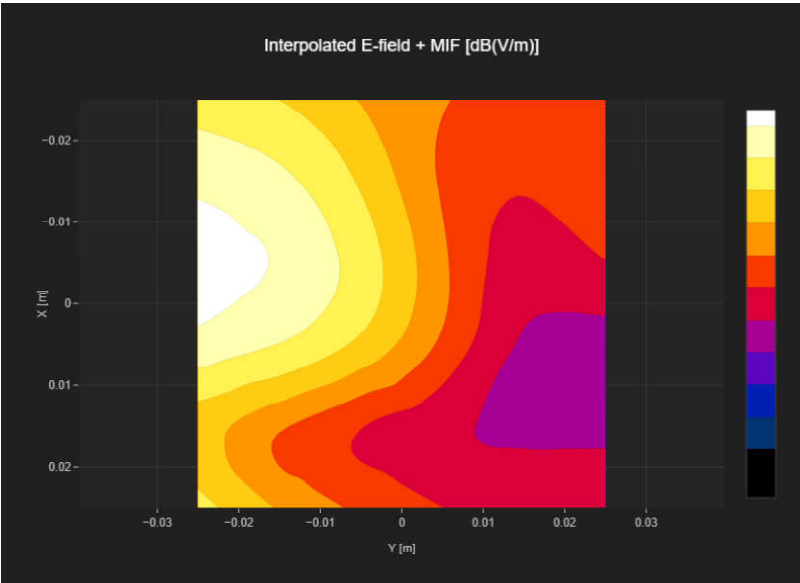
Band Name	Communication Systems Name	Channel	Frequency [MHz]
Band n41	5G NR (DFT-s-OFDM, 1 RB, 100 MHz, QPSK, 30 kHz)	518598	2592.99

## Grid Settings

Extent X [mm]	Extent Y [mm]	Step X [mm]	Step Y [mm]	Distance [mm]
50.0	50.0	10.0	10.0	15.0

## Results

E <sub>max</sub> [dB(V/m)]	E <sub>avg50x50 max</sub> [dB(V/m)]	MIF [dB]	RFail [dB(V/m)]
30.4	24.32	-1.64	22.81



# Plot No.27

Measurement performed on November 20, 2024 at 01:36

## Device Under Test

Manufacturer	Model	Dimensions[mm]	Speaker Position [mm]
		146.2 x 71.8 x 7.5	144.3

## Hardware Setup

Probe Name	Probe Calibration Date	DAE Name	DAE Calibration Date
EF3DV3 - SN4050	March 06, 2024	DAE4 Sn1691	April 19, 2024

## Communication Systems

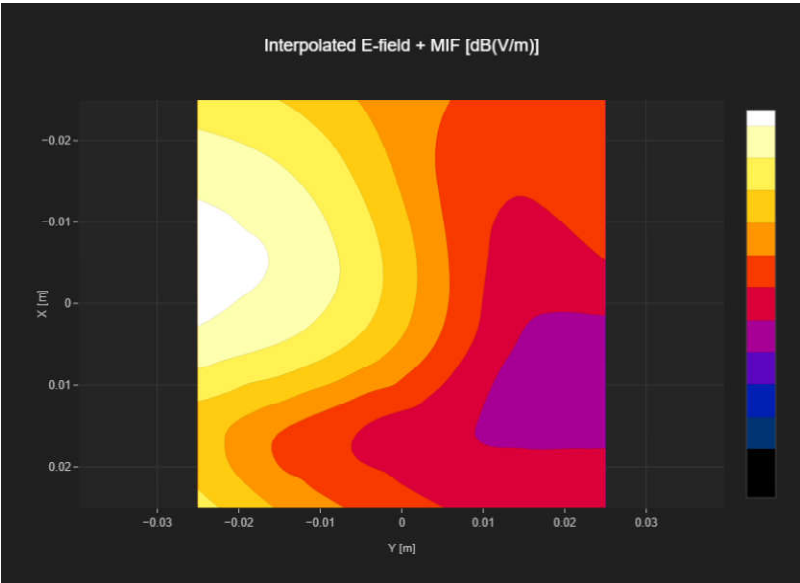
Band Name	Communication Systems Name	Channel	Frequency [MHz]
Band n41	5G NR (DFT-s-OFDM, 1 RB, 100 MHz, QPSK, 30 kHz)	528000	2640.0

## Grid Settings

Extent X [mm]	Extent Y [mm]	Step X [mm]	Step Y [mm]	Distance [mm]
50.0	50.0	10.0	10.0	15.0

## Results

E <sub>max</sub> [dB(V/m)]	E <sub>avg50x50 max</sub> [dB(V/m)]	MIF [dB]	RFail [dB(V/m)]
30.7	24.53	-1.64	22.89



# Plot No.28

Measurement performed on November 20, 2024 at 02:16

## Device Under Test

Manufacturer	Model	Dimensions[mm]	Speaker Position [mm]
		146.2 x 71.8 x 7.5	144.3

## Hardware Setup

Probe Name	Probe Calibration Date	DAE Name	DAE Calibration Date
EF3DV3 - SN4050	March 06, 2024	DAE4 Sn1691	April 19, 2024

## Communication Systems

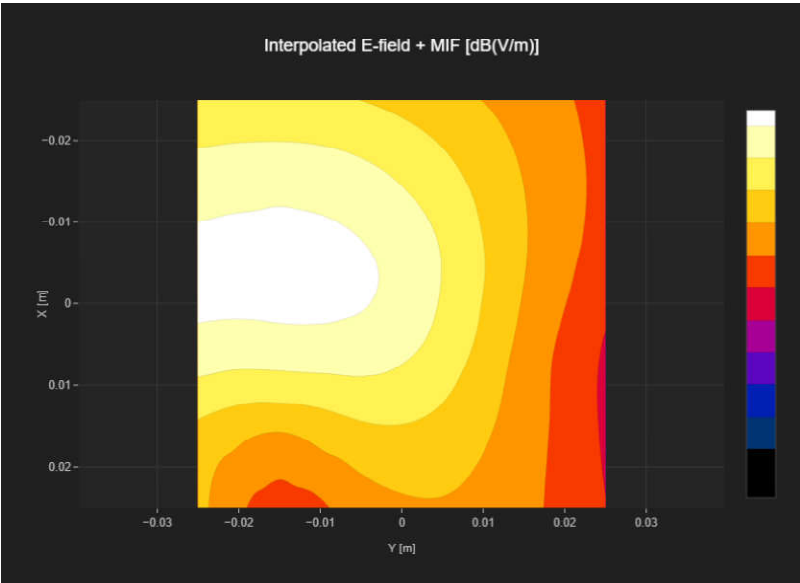
Band Name	Communication Systems Name	Channel	Frequency [MHz]
Band n77	5G NR (DFT-s-OFDM, 1 RB, 100 MHz, QPSK, 30 kHz)	650000	3750.0

## Grid Settings

Extent X [mm]	Extent Y [mm]	Step X [mm]	Step Y [mm]	Distance [mm]
50.0	50.0	10.0	10.0	15.0

## Results

E <sub>max</sub> [dB(V/m)]	E <sub>avg50x50 max</sub> [dB(V/m)]	MIF [dB]	RFail [dB(V/m)]
34.43	30.6	-1.64	28.96



# Plot No.29

Measurement performed on November 20, 2024 at 02:41

## Device Under Test

Manufacturer	Model	Dimensions[mm]	Speaker Position [mm]
		146.2 x 71.8 x 7.5	144.3

## Hardware Setup

Probe Name	Probe Calibration Date	DAE Name	DAE Calibration Date
EF3DV3 - SN4050	March 06, 2024	DAE4 Sn1691	April 19, 2024

## Communication Systems

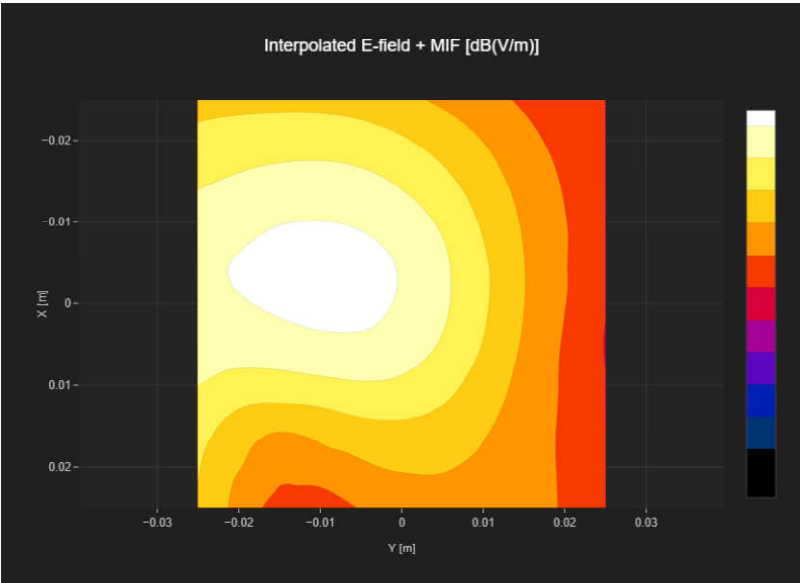
Band Name	Communication Systems Name	Channel	Frequency [MHz]
Band n77	5G NR (DFT-s-OFDM, 1 RB, 100 MHz, QPSK, 30 kHz)	656000	3840.0

## Grid Settings

Extent X [mm]	Extent Y [mm]	Step X [mm]	Step Y [mm]	Distance [mm]
50.0	50.0	10.0	10.0	15.0

## Results

E <sub>max</sub> [dB(V/m)]	E <sub>avg50x50 max</sub> [dB(V/m)]	MIF [dB]	RFail [dB(V/m)]
35.22	31.25	-1.64	29.61



# Plot No.30

Measurement performed on November 20, 2024 at 23:12

## Device Under Test

Manufacturer	Model	Dimensions[mm]	Speaker Position [mm]
		146.2 x 71.8 x 7.5	144.3

## Hardware Setup

Probe Name	Probe Calibration Date	DAE Name	DAE Calibration Date
EF3DV3 - SN4050	March 06, 2024	DAE4 Sn1691	April 19, 2024

## Communication Systems

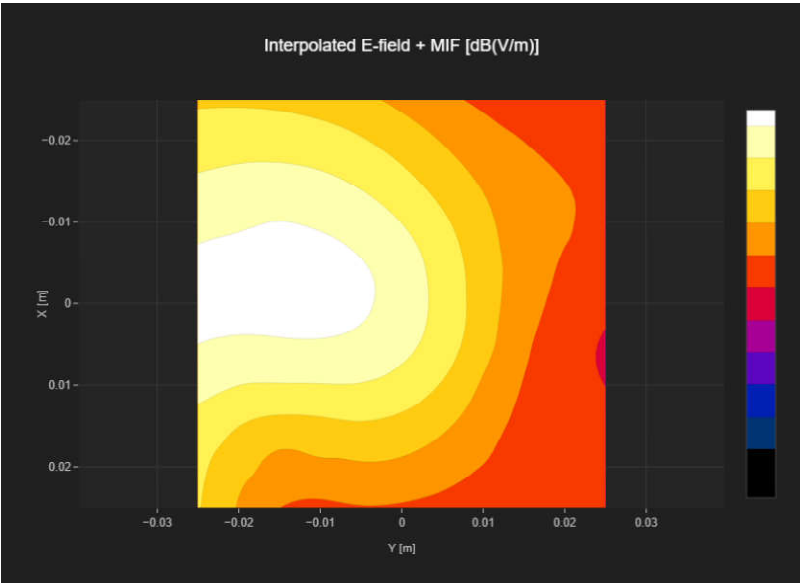
Band Name	Communication Systems Name	Channel	Frequency [MHz]
Band n77	5G NR (DFT-s-OFDM, 1 RB, 100 MHz, QPSK, 30 kHz)	656000	3840.0

## Grid Settings

Extent X [mm]	Extent Y [mm]	Step X [mm]	Step Y [mm]	Distance [mm]
50.0	50.0	10.0	10.0	15.0

## Results

E <sub>max</sub> [dB(V/m)]	E <sub>avg50x50 max</sub> [dB(V/m)]	MIF [dB]	RFail [dB(V/m)]
34.92	30.69	-1.64	29.05



# Plot No.31

Measurement performed on November 20, 2024 at 02:46

## Device Under Test

Manufacturer	Model	Dimensions[mm]	Speaker Position [mm]
		146.2 x 71.8 x 7.5	144.3

## Hardware Setup

Probe Name	Probe Calibration Date	DAE Name	DAE Calibration Date
EF3DV3 - SN4050	March 06, 2024	DAE4 Sn1691	April 19, 2024

## Communication Systems

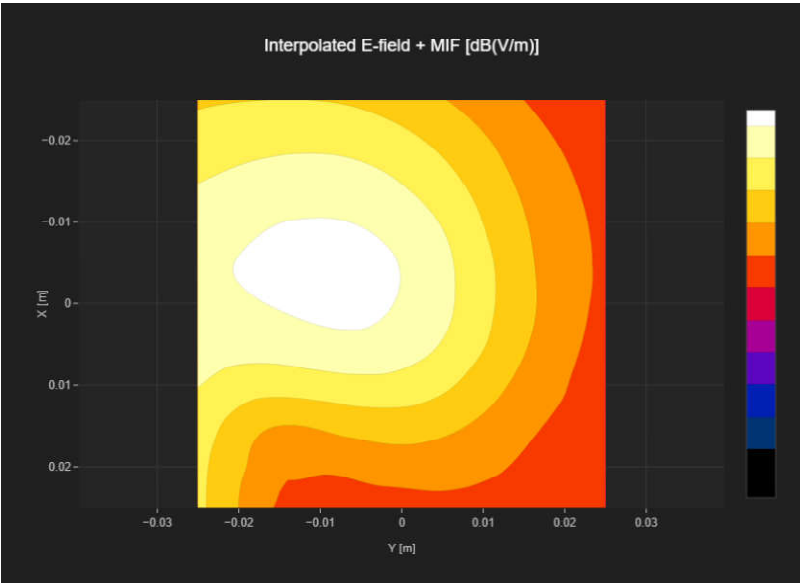
Band Name	Communication Systems Name	Channel	Frequency [MHz]
Band n77	5G NR (DFT-s-OFDM, 1 RB, 100 MHz, QPSK, 30 kHz)	662000	3930.0

## Grid Settings

Extent X [mm]	Extent Y [mm]	Step X [mm]	Step Y [mm]	Distance [mm]
50.0	50.0	10.0	10.0	15.0

## Results

E <sub>max</sub> [dB(V/m)]	E <sub>avg50x50 max</sub> [dB(V/m)]	MIF [dB]	RFail [dB(V/m)]
34.43	30.46	-1.64	28.82



# Plot No.32

Measurement performed on November 20, 2024 at 15:25

## Device Under Test

Manufacturer	Model	Dimensions[mm]	Speaker Position [mm]
		146.2 x 71.8 x 7.5	144.3

## Hardware Setup

Probe Name	Probe Calibration Date	DAE Name	DAE Calibration Date
EF3DV3 - SN4050	March 06, 2024	DAE4 Sn1691	April 19, 2024

## Communication Systems

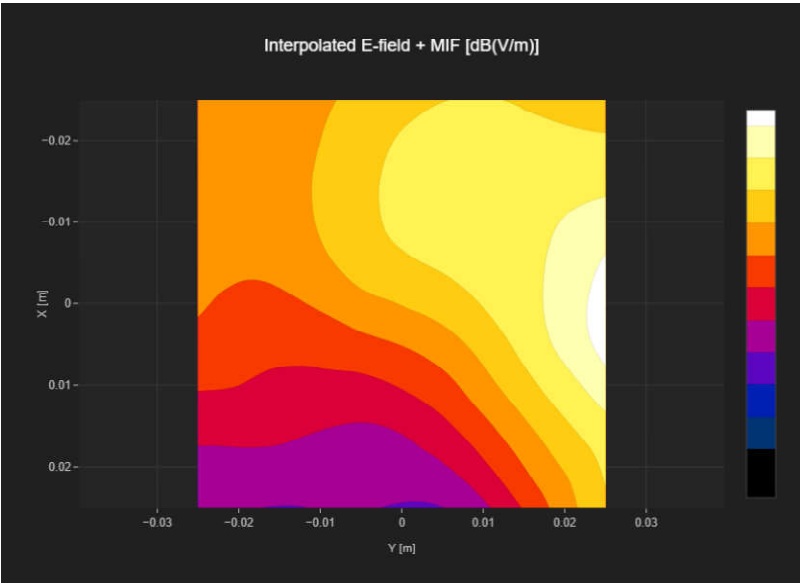
Band Name	Communication Systems Name	Channel	Frequency [MHz]
Band n77	5G NR (DFT-s-OFDM, 1 RB, 100 MHz, QPSK, 30 kHz)	650000	3750.0

## Grid Settings

Extent X [mm]	Extent Y [mm]	Step X [mm]	Step Y [mm]	Distance [mm]
50.0	50.0	10.0	10.0	15.0

## Results

E <sub>max</sub> [dB(V/m)]	E <sub>avg50x50 max</sub> [dB(V/m)]	MIF [dB]	RFail [dB(V/m)]
27.31	21.34	-1.64	19.7





# Plot No.33

Measurement performed on November 20, 2024 at 15:28

## Device Under Test

Manufacturer	Model	Dimensions[mm]	Speaker Position [mm]
		146.2 x 71.8 x 7.5	144.3

## Hardware Setup

Probe Name	Probe Calibration Date	DAE Name	DAE Calibration Date
EF3DV3 - SN4050	March 06, 2024	DAE4 Sn1691	April 19, 2024

## Communication Systems

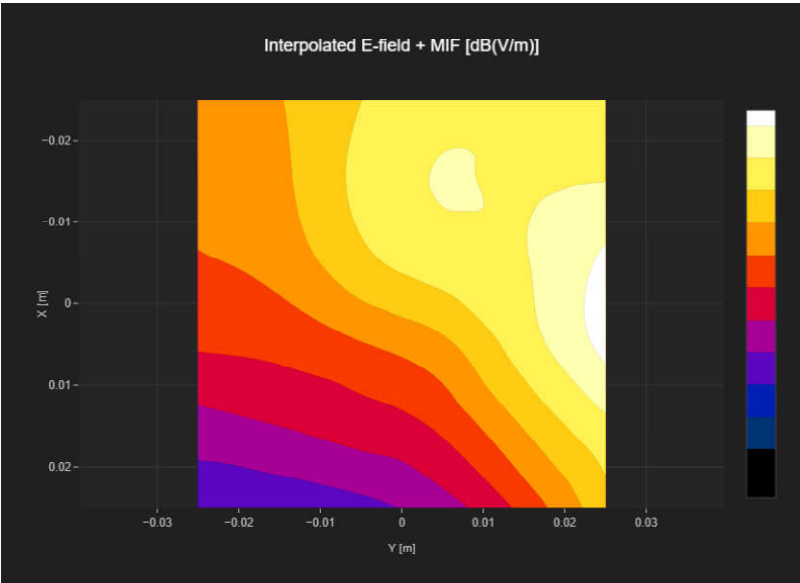
Band Name	Communication Systems Name	Channel	Frequency [MHz]
Band n77	5G NR (DFT-s-OFDM, 1 RB, 100 MHz, QPSK, 30 kHz)	656000	3840.0

## Grid Settings

Extent X [mm]	Extent Y [mm]	Step X [mm]	Step Y [mm]	Distance [mm]
50.0	50.0	10.0	10.0	15.0

## Results

E <sub>max</sub> [dB(V/m)]	E <sub>avg50x50 max</sub> [dB(V/m)]	MIF [dB]	RFail [dB(V/m)]
27.72	22.18	-1.64	20.54



# Plot No.34

Measurement performed on November 20, 2024 at 15:32

## Device Under Test

Manufacturer	Model	Dimensions[mm]	Speaker Position [mm]
		146.2 x 71.8 x 7.5	144.3

## Hardware Setup

Probe Name	Probe Calibration Date	DAE Name	DAE Calibration Date
EF3DV3 - SN4050	March 06, 2024	DAE4 Sn1691	April 19, 2024

## Communication Systems

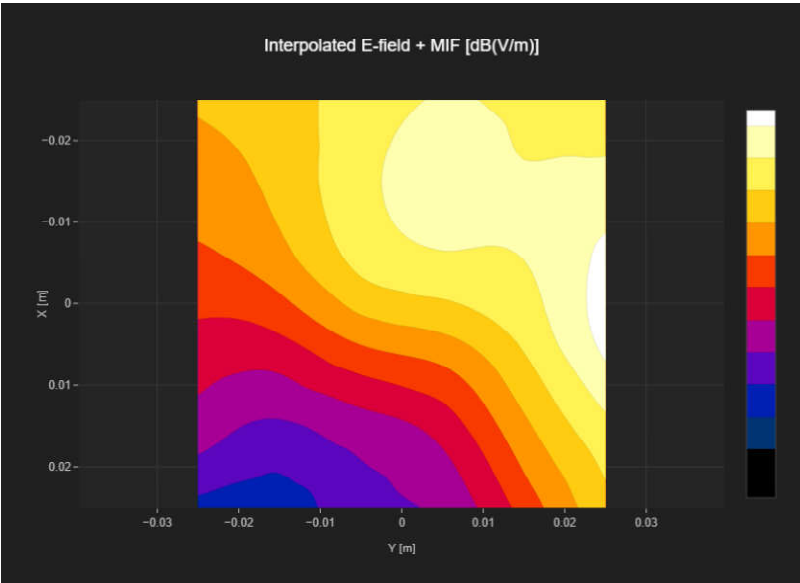
Band Name	Communication Systems Name	Channel	Frequency [MHz]
Band n77	5G NR (DFT-s-OFDM, 1 RB, 100 MHz, QPSK, 30 kHz)	662000	3930.0

## Grid Settings

Extent X [mm]	Extent Y [mm]	Step X [mm]	Step Y [mm]	Distance [mm]
50.0	50.0	10.0	10.0	15.0

## Results

E <sub>max</sub> [dB(V/m)]	E <sub>avg50x50 max</sub> [dB(V/m)]	MIF [dB]	RFail [dB(V/m)]
25.12	21.58	-1.64	19.94



# Plot No.35

Measurement performed on November 20, 2024 at 03:12

## Device Under Test

Manufacturer	Model	Dimensions[mm]	Speaker Position [mm]
		146.2 x 71.8 x 7.5	144.3

## Hardware Setup

Probe Name	Probe Calibration Date	DAE Name	DAE Calibration Date
EF3DV3 - SN4050	March 06, 2024	DAE4 Sn1691	April 19, 2024

## Communication Systems

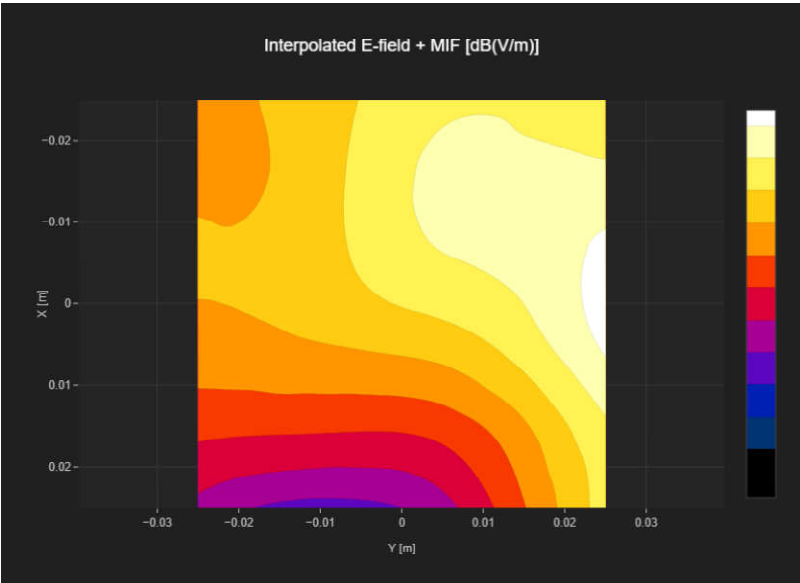
Band Name	Communication Systems Name	Channel	Frequency [MHz]
Band n77	5G NR (DFT-s-OFDM, 1 RB, 100 MHz, QPSK, 30 kHz)	650000	3750.0

## Grid Settings

Extent X [mm]	Extent Y [mm]	Step X [mm]	Step Y [mm]	Distance [mm]
50.0	50.0	10.0	10.0	15.0

## Results

E <sub>max</sub> [dB(V/m)]	E <sub>avg50x50 max</sub> [dB(V/m)]	MIF [dB]	RFail [dB(V/m)]
31.75	28.89	-1.64	27.25



# Plot No.36

Measurement performed on November 20, 2024 at 23:21

## Device Under Test

Manufacturer	Model	Dimensions[mm]	Speaker Position [mm]
		146.2 x 71.8 x 7.5	144.3

## Hardware Setup

Probe Name	Probe Calibration Date	DAE Name	DAE Calibration Date
EF3DV3 - SN4050	March 06, 2024	DAE4 Sn1691	April 19, 2024

## Communication Systems

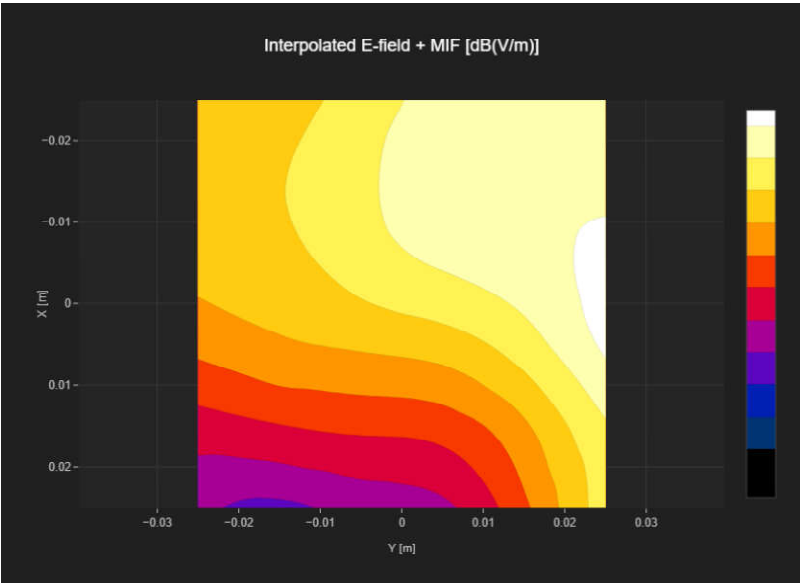
Band Name	Communication Systems Name	Channel	Frequency [MHz]
Band n77	5G NR (DFT-s-OFDM, 1 RB, 100 MHz, QPSK, 30 kHz)	650000	3750.0

## Grid Settings

Extent X [mm]	Extent Y [mm]	Step X [mm]	Step Y [mm]	Distance [mm]
50.0	50.0	10.0	10.0	15.0

## Results

E <sub>max</sub> [dB(V/m)]	E <sub>avg50x50 max</sub> [dB(V/m)]	MIF [dB]	RFail [dB(V/m)]
30.34	27.2	-1.64	25.56



# Plot No.37

Measurement performed on November 20, 2024 at 03:22

## Device Under Test

Manufacturer	Model	Dimensions[mm]	Speaker Position [mm]
		146.2 x 71.8 x 7.5	144.3

## Hardware Setup

Probe Name	Probe Calibration Date	DAE Name	DAE Calibration Date
EF3DV3 - SN4050	March 06, 2024	DAE4 Sn1691	April 19, 2024

## Communication Systems

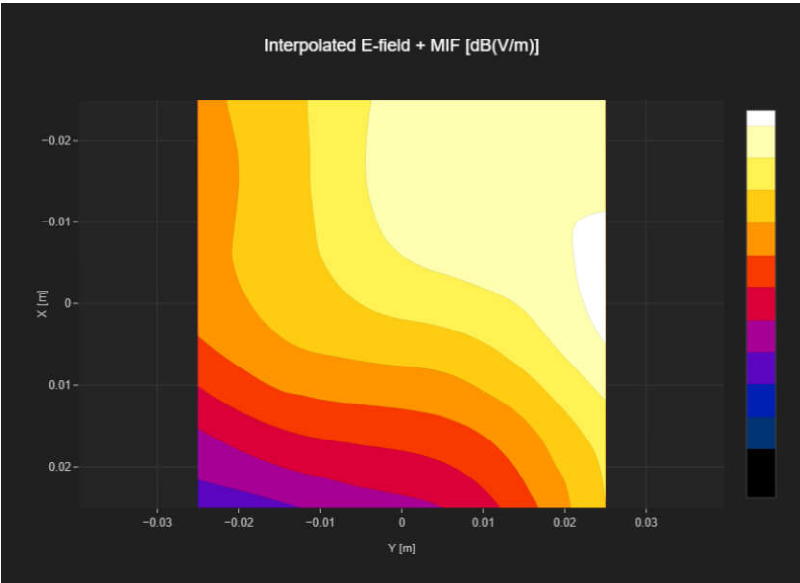
Band Name	Communication Systems Name	Channel	Frequency [MHz]
Band n77	5G NR (DFT-s-OFDM, 1 RB, 100 MHz, QPSK, 30 kHz)	656000	3840.0

## Grid Settings

Extent X [mm]	Extent Y [mm]	Step X [mm]	Step Y [mm]	Distance [mm]
50.0	50.0	10.0	10.0	15.0

## Results

E <sub>max</sub> [dB(V/m)]	E <sub>avg50x50 max</sub> [dB(V/m)]	MIF [dB]	RFail [dB(V/m)]
31.2	27.75	-1.64	26.11



# Plot No.38

Measurement performed on November 20, 2024 at 02:55

## Device Under Test

Manufacturer	Model	Dimensions[mm]	Speaker Position [mm]
		146.2 x 71.8 x 7.5	144.3

## Hardware Setup

Probe Name	Probe Calibration Date	DAE Name	DAE Calibration Date
EF3DV3 - SN4050	March 06, 2024	DAE4 Sn1691	April 19, 2024

## Communication Systems

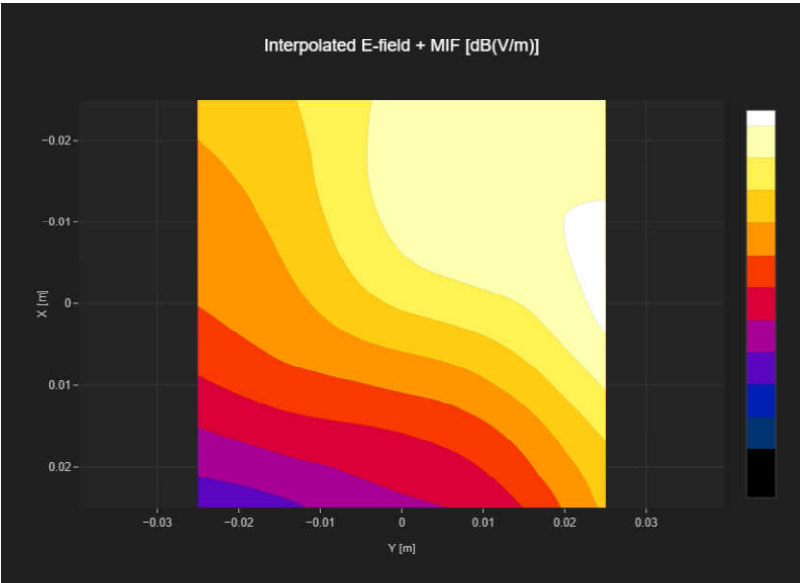
Band Name	Communication Systems Name	Channel	Frequency [MHz]
Band n77	5G NR (DFT-s-OFDM, 1 RB, 100 MHz, QPSK, 30 kHz)	662000	3930.0

## Grid Settings

Extent X [mm]	Extent Y [mm]	Step X [mm]	Step Y [mm]	Distance [mm]
50.0	50.0	10.0	10.0	15.0

## Results

E <sub>max</sub> [dB(V/m)]	E <sub>avg50x50 max</sub> [dB(V/m)]	MIF [dB]	RFail [dB(V/m)]
30.21	26.48	-1.64	24.84



# Plot No.39

Measurement performed on November 20, 2024 at 03:46

## Device Under Test

Manufacturer	Model	Dimensions[mm]	Speaker Position [mm]
		146.2 x 71.8 x 7.5	144.3

## Hardware Setup

Probe Name	Probe Calibration Date	DAE Name	DAE Calibration Date
EF3DV3 - SN4050	March 06, 2024	DAE4 Sn1691	April 19, 2024

## Communication Systems

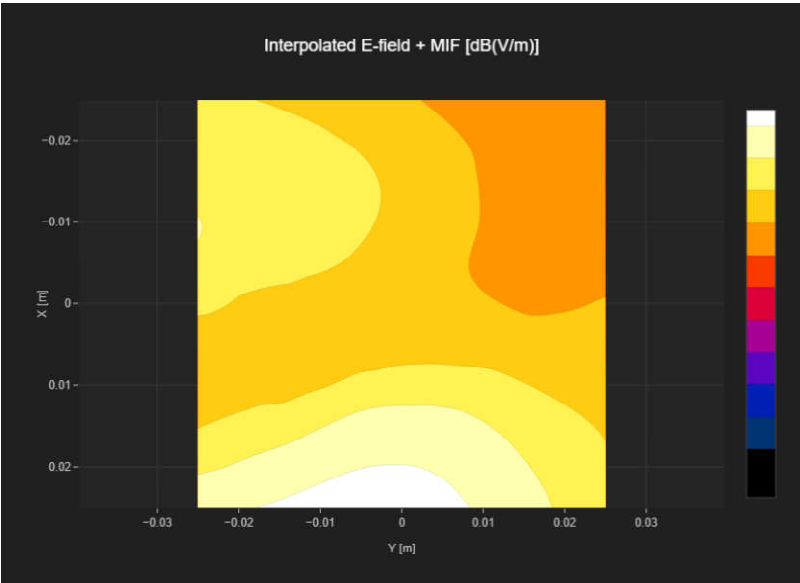
Band Name	Communication Systems Name	Channel	Frequency [MHz]
Band n77	5G NR (DFT-s-OFDM, 1 RB, 100 MHz, QPSK, 30 kHz)	650000	3750.0

## Grid Settings

Extent X [mm]	Extent Y [mm]	Step X [mm]	Step Y [mm]	Distance [mm]
50.0	50.0	10.0	10.0	15.0

## Results

E <sub>max</sub> [dB(V/m)]	E <sub>avg50x50 max</sub> [dB(V/m)]	MIF [dB]	RFail [dB(V/m)]
30.38	26.35	-1.64	24.71



# Plot No.40

Measurement performed on November 20, 2024 at 03:52

## Device Under Test

Manufacturer	Model	Dimensions[mm]	Speaker Position [mm]
		146.2 x 71.8 x 7.5	144.3

## Hardware Setup

Probe Name	Probe Calibration Date	DAE Name	DAE Calibration Date
EF3DV3 - SN4050	March 06, 2024	DAE4 Sn1691	April 19, 2024

## Communication Systems

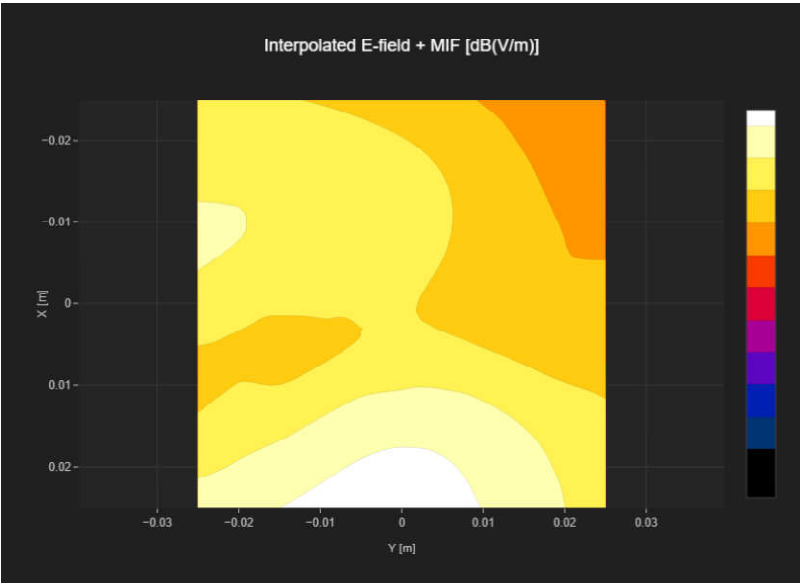
Band Name	Communication Systems Name	Channel	Frequency [MHz]
Band n77	5G NR (DFT-s-OFDM, 1 RB, 100 MHz, QPSK, 30 kHz)	656000	3840.0

## Grid Settings

Extent X [mm]	Extent Y [mm]	Step X [mm]	Step Y [mm]	Distance [mm]
50.0	50.0	10.0	10.0	15.0

## Results

E <sub>max</sub> [dB(V/m)]	E <sub>avg50x50 max</sub> [dB(V/m)]	MIF [dB]	RFail [dB(V/m)]
30.1	26.66	-1.64	25.02





# Plot No.41

Measurement performed on November 20, 2024 at 23:28

## Device Under Test

Manufacturer	Model	Dimensions[mm]	Speaker Position [mm]
		146.2 x 71.8 x 7.5	144.3

## Hardware Setup

Probe Name	Probe Calibration Date	DAE Name	DAE Calibration Date
EF3DV3 - SN4050	March 06, 2024	DAE4 Sn1691	April 19, 2024

## Communication Systems

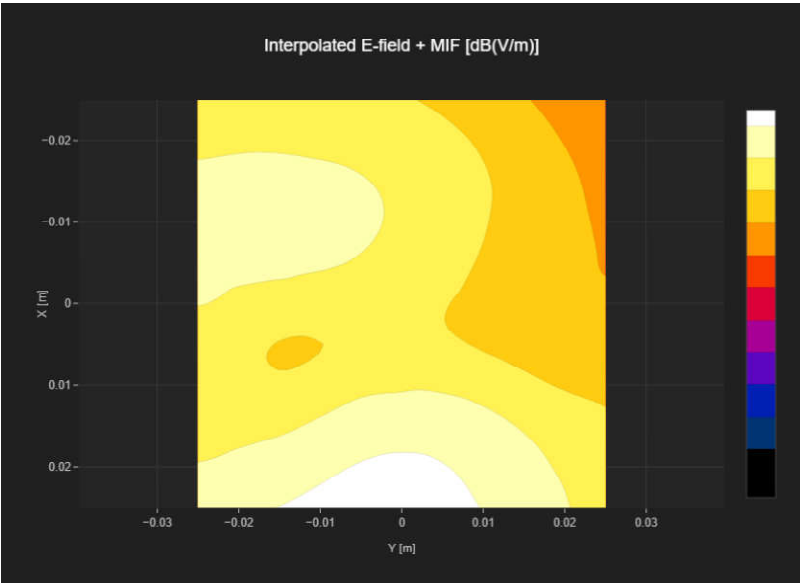
Band Name	Communication Systems Name	Channel	Frequency [MHz]
Band n77	5G NR (DFT-s-OFDM, 1 RB, 100 MHz, QPSK, 30 kHz)	656000	3840.0

## Grid Settings

Extent X [mm]	Extent Y [mm]	Step X [mm]	Step Y [mm]	Distance [mm]
50.0	50.0	10.0	10.0	15.0

## Results

E <sub>max</sub> [dB(V/m)]	E <sub>avg50x50 max</sub> [dB(V/m)]	MIF [dB]	RFail [dB(V/m)]
28.49	27.17	-1.64	25.53



# Plot No.42

Measurement performed on November 20, 2024 at 04:07

## Device Under Test

Manufacturer	Model	Dimensions[mm]	Speaker Position [mm]
		146.2 x 71.8 x 7.5	144.3

## Hardware Setup

Probe Name	Probe Calibration Date	DAE Name	DAE Calibration Date
EF3DV3 - SN4050	March 06, 2024	DAE4 Sn1691	April 19, 2024

## Communication Systems

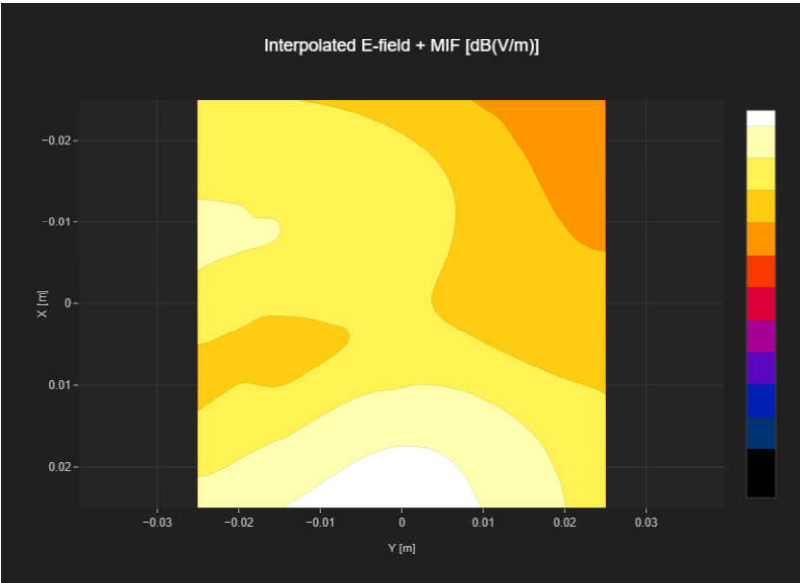
Band Name	Communication Systems Name	Channel	Frequency [MHz]
Band n77	5G NR (DFT-s-OFDM, 1 RB, 100 MHz, QPSK, 30 kHz)	662000	3930.0

## Grid Settings

Extent X [mm]	Extent Y [mm]	Step X [mm]	Step Y [mm]	Distance [mm]
50.0	50.0	10.0	10.0	15.0

## Results

E <sub>max</sub> [dB(V/m)]	E <sub>avg50x50 max</sub> [dB(V/m)]	MIF [dB]	RFail [dB(V/m)]
30.04	26.63	-1.64	24.99



# Plot No.43

Measurement performed on November 20, 2024 at 05:06

## Device Under Test

Manufacturer	Model	Dimensions[mm]	Speaker Position [mm]
		146.2 x 71.8 x 7.5	144.3

## Hardware Setup

Probe Name	Probe Calibration Date	DAE Name	DAE Calibration Date
EF3DV3 - SN4050	March 06, 2024	DAE4 Sn1691	April 19, 2024

## Communication Systems

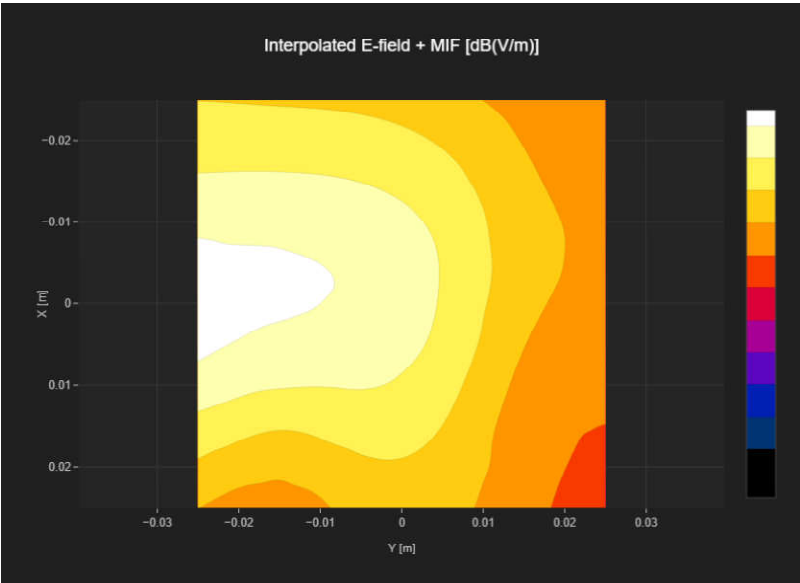
Band Name	Communication Systems Name	Channel	Frequency [MHz]
Band n77	5G NR (DFT-s-OFDM, 1 RB, 100 MHz, QPSK, 30 kHz)	633334	3500.01

## Grid Settings

Extent X [mm]	Extent Y [mm]	Step X [mm]	Step Y [mm]	Distance [mm]
50.0	50.0	10.0	10.0	15.0

## Results

E <sub>max</sub> [dB(V/m)]	E <sub>avg50x50 max</sub> [dB(V/m)]	MIF [dB]	RFail [dB(V/m)]
32.2	28.55	-1.64	26.91



# Plot No.44

Measurement performed on November 20, 2024 at 15:37

## Device Under Test

Manufacturer	Model	Dimensions[mm]	Speaker Position [mm]
		146.2 x 71.8 x 7.5	144.3

## Hardware Setup

Probe Name	Probe Calibration Date	DAE Name	DAE Calibration Date
EF3DV3 - SN4050	March 06, 2024	DAE4 Sn1691	April 19, 2024

## Communication Systems

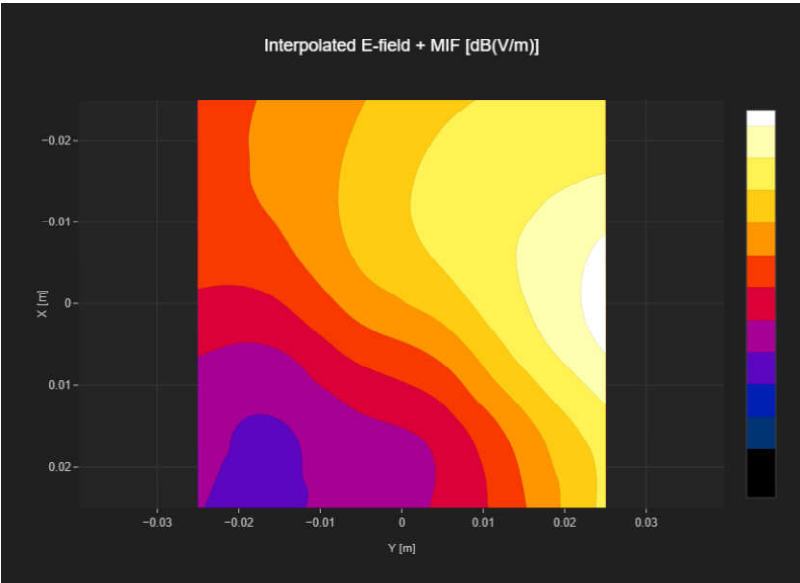
Band Name	Communication Systems Name	Channel	Frequency [MHz]
Band n77	5G NR (DFT-s-OFDM, 1 RB, 100 MHz, QPSK, 30 kHz)	633334	3500.01

## Grid Settings

Extent X [mm]	Extent Y [mm]	Step X [mm]	Step Y [mm]	Distance [mm]
50.0	50.0	10.0	10.0	15.0

## Results

E <sub>max</sub> [dB(V/m)]	E <sub>avg50x50 max</sub> [dB(V/m)]	MIF [dB]	RFail [dB(V/m)]
25.96	19.72	-1.64	18.08



# Plot No.45

Measurement performed on November 20, 2024 at 05:24

## Device Under Test

Manufacturer	Model	Dimensions[mm]	Speaker Position [mm]
		146.2 x 71.8 x 7.5	144.3

## Hardware Setup

Probe Name	Probe Calibration Date	DAE Name	DAE Calibration Date
EF3DV3 - SN4050	March 06, 2024	DAE4 Sn1691	April 19, 2024

## Communication Systems

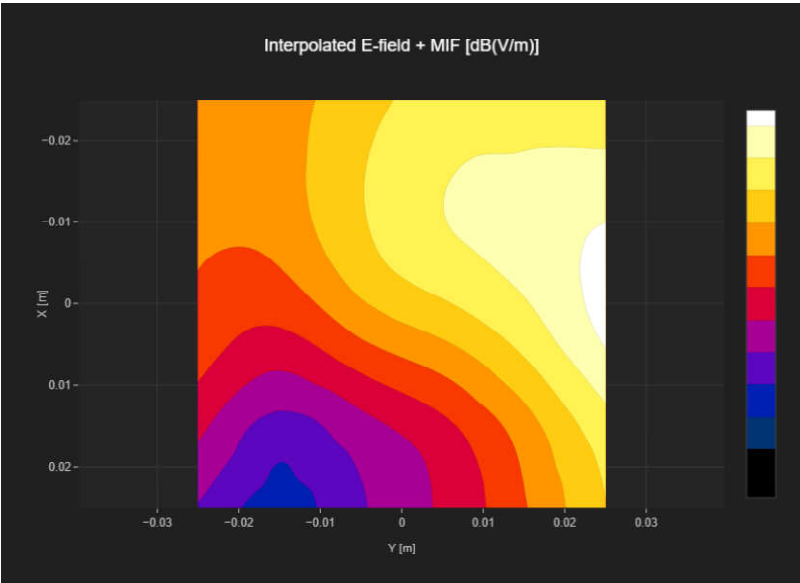
Band Name	Communication Systems Name	Channel	Frequency [MHz]
Band n77	5G NR (DFT-s-OFDM, 1 RB, 100 MHz, QPSK, 30 kHz)	633334	3500.01

## Grid Settings

Extent X [mm]	Extent Y [mm]	Step X [mm]	Step Y [mm]	Distance [mm]
50.0	50.0	10.0	10.0	15.0

## Results

E <sub>max</sub> [dB(V/m)]	E <sub>avg50x50 max</sub> [dB(V/m)]	MIF [dB]	RFail [dB(V/m)]
30.74	25.03	-1.64	23.39



# Plot No.46

Measurement performed on November 20, 2024 at 04:20

## Device Under Test

Manufacturer	Model	Dimensions[mm]	Speaker Position [mm]
		146.2 x 71.8 x 7.5	144.3

## Hardware Setup

Probe Name	Probe Calibration Date	DAE Name	DAE Calibration Date
EF3DV3 - SN4050	March 06, 2024	DAE4 Sn1691	April 19, 2024

## Communication Systems

Band Name	Communication Systems Name	Channel	Frequency [MHz]
Band n77	5G NR (DFT-s-OFDM, 1 RB, 100 MHz, QPSK, 30 kHz)	633334	3500.01

## Grid Settings

Extent X [mm]	Extent Y [mm]	Step X [mm]	Step Y [mm]	Distance [mm]
50.0	50.0	10.0	10.0	15.0

## Results

E <sub>max</sub> [dB(V/m)]	E <sub>avg50x50 max</sub> [dB(V/m)]	MIF [dB]	RFail [dB(V/m)]
29.54	25.15	-1.64	23.51

