

NVO/NWBC  
Marko Puupponen

23.11.1999

## **Introduction**

This document describes specifications for RF connector with a switch. (2789.99.0030.00')

## **Overall**

Plug is inserted horizontally.  
Lifetime: >1000 mating cycles.  
Cable Mount Plug (2813.91.1310.02) is suitable for mating half.  
Temperature range: -20...+80.

## **Switching operation**

RF connector is used to connect the RF-path of transceiver between external and internal antenna. When external antenna is connected (plug is inserted), path to internal antenna is off. When plug is not inserted path to internal antenna is in use.

## **Electrical parameters**

Frequency range up to 3 GHz.  
Insertion loss max 0.5 dBm.  
Isolation, Ext to Int min 20dB.  
Return loss min 15 dB.  
Power rating 1W.

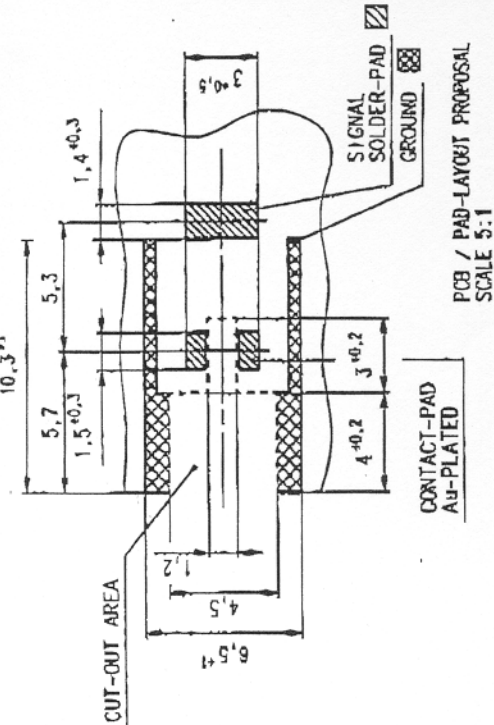
## **Soldering**

Connector must be suitable for Nokia specified SMD process.

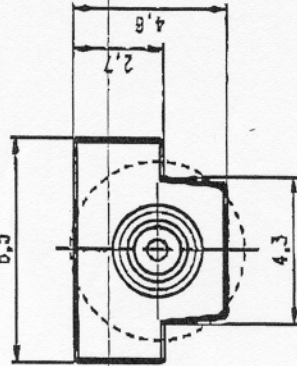
## **Mechanical dimensions**

Dimension drawing: rev.B

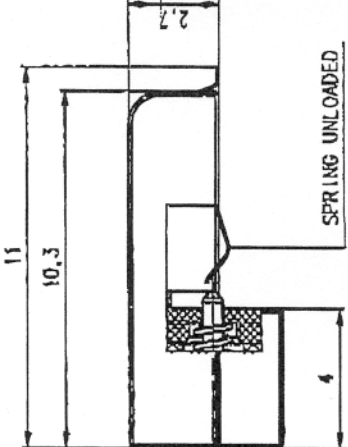
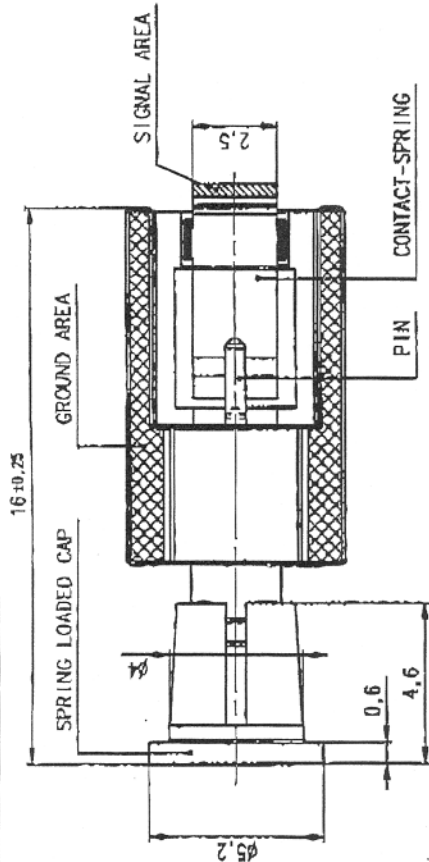
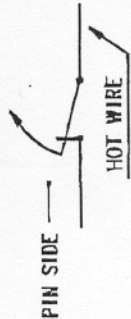
PRELIMINARY  
CONFIDENTIAL



PCB / PAD-LAYOUT PROPOSAL  
SCALE 5:1



SWITCH FUNCTION OF  
FRONT VIEW:

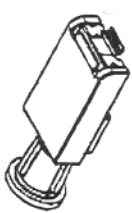


INTERFACE DIMENSION  
APPROXIMATED TO IEC 60169-19.

PIN OPERATING STROKE: 2 mm

MATERIAL AND FINISH:

HOUSING	GD-ZnAlMgCu1	2-3 μm Ni + 0.2 μm Au
INSULATOR	PEEK	TR/BOR
CONTACT-SPRING	CuBe2	TR/BOR
COMPRESSION-SPRING	DIN 2076-B	TR/BOR
OTHER METAL PARTS	Cu/Zn	TR/BOR
SPRING LOADED CAP	PEEK	



GENERAL TOLERANCE ISO 2768 mH		MOSstab: 7:1	
Rearb.	Rearb.	Rearb.	Rearb.
Capr.	Capr.	Capr.	Capr.
Mom.	Mom.	Mom.	Mom.
ENTWURF	REVISION	16.09.94	ZB
ENTWURF	REVISION	05.07.94	ZB
Entf.	Änderung	Datum	Name
SCHALTER SWITCH			
2789.99.0030.001			Rev. b