

# ELLA-W1 Photos

<b>Topic :</b>	<b>ELLA-W1 Photos</b>		
<b>Doc.No:</b>	UBX-16025892		
<b>Revision</b>	R01		
	Date:	Name	Signature
<b>Created</b>	20-Oct-2016	Daniel Dietterle	ddie
<b>Checked</b>			
<b>Released</b>			

We reserve all rights in this document and in the information contained therein. Reproduction, use or disclosure to third parties without express authority is strictly forbidden.

© 2016 u-blox AG

## 1 Scope

This document provides internal and external photos of the shielded ELLA-W1 series modules. It is part of the equipment certification application (Class II Permissive Change request) issued to FCC and IC. The internal photos have been taken with the RF shield removed.

## 2 FCC/IC ID reference

Model	FCC ID	IC ID
ELLA-W131	PV7-WIBEAR11N-SF1	7738A-WB11NSF1
ELLA-W133	PV7-WIBEAR11N-SF2	7738A-WB11NSF2
ELLA-W161	PV7-WIBEAR11N-DF1	7738A-WB11NDF1
ELLA-W163	PV7-WIBEAR11N-DF2	7738A-WB11NDF2

Table 1: FCC and IC IDs for different models of ELLA-W1 series

## 3 Top view

### 3.1 Internal photos

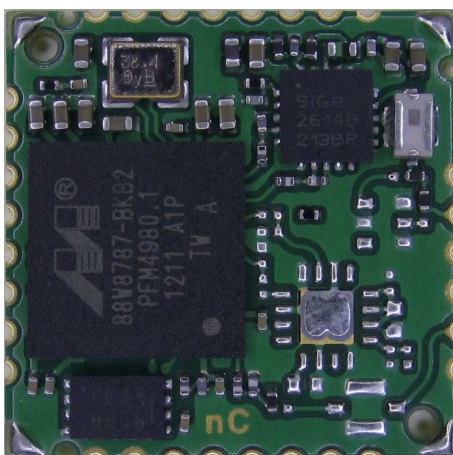


Figure 1: ELLA-W131 top view internal photo

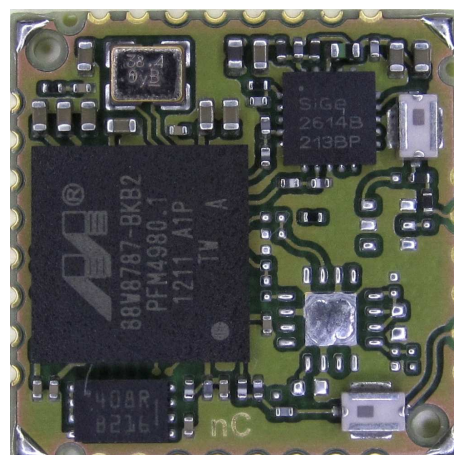


Figure 2: ELLA-W133 top view internal photo

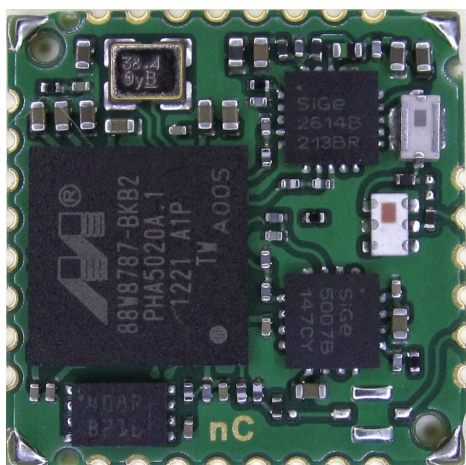


Figure 3: ELLA-W161 top view internal photo

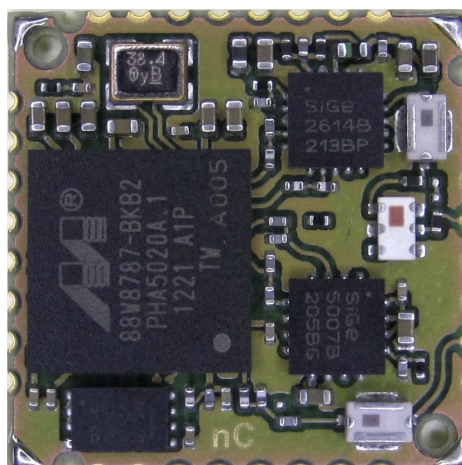


Figure 4: ELLA-W163 top view internal photo

## 3.2 External photos



Figure 5: ELLA-W161 in tape&reel packaging

The shielded ELLA-W1 series modules differ only in the information shown on the product label, i.e. model name and corresponding FCC and IC IDs as listed in Table 1. Figure 5 shows the external photo for ELLA-W161.

The product label for ELLA-W131 additionally contains GITEKI mark and certification ID, see Figure 6.



Figure 6: ELLA-W131 label photo

## 4 Bottom view

The bottom view for all models, ELLA-W131, ELLA-W133, ELLA-W161, and ELLA-W163, is identical.

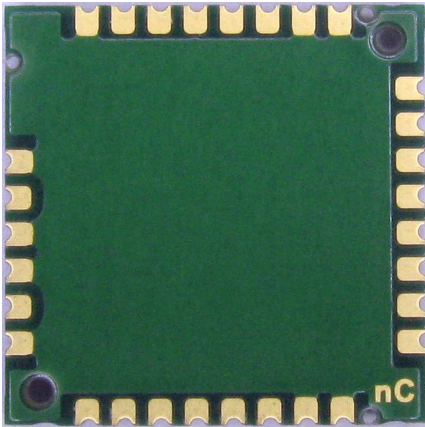


Figure 7: ELLA-W1 series modules bottom view