

單張式英文版
70磅雙交紙，W222.75*H105mm雙面印刷先彈簧折，再上下對折

折線

INFINITIVE

Wireless Mouse

USER GUIDE

Important Safety Precautions/Cleaning & Maintenance Instructions

When using your wireless mouse, basic safety precautions should always be followed, including the following:

1. READ ALL INSTRUCTIONS BEFORE USING YOUR WIRELESS MOUSE.
2. Never expose your wireless mouse to high temperatures, extreme cold, high humidity or any moisture or water.
3. In order to avoid the risk of electric shock, never attempt to open your wireless mouse or repair it without the assistance of certified professionals.
4. Your wireless mouse is not to be used by children or the infirm without suitable adult supervision.
5. Do not drop your wireless mouse, throw it, or subject it to strong impacts or physical trauma.
6. Clean your wireless mouse using a soft, moist cloth or paper towel. Do not use harsh chemicals when cleaning your wireless mouse, and never submerge wireless mouse in water.
7. Do not mix old and new batteries. Do not mix alkaline, standard (carbon-zinc), or rechargeable (ni-cad, ni-mh, etc.) batteries.

| | |
|--|---|
| | CAUTION Risk of Fire and Burns, Always Follow All Manufacturer's Instructions When Using. |
| | CAUTION Changes or modifications not expressly approved by the party responsible for compliance could void the user's authority to operate the equipment. |

Package content

1. Left button
2. Right button
3. Scrolling wheel
4. Forward
5. Backward
6. USB Nano receiver
7. Magnetic battery cover
8. Connect button
9. OFF/ON switch
10. User manual
11. 2 x AAA batteries

Forward
Press this button to view the next page in your Internet browser.
Backward
Press this button to view the previous page in your Internet browser.

WIC# 491432

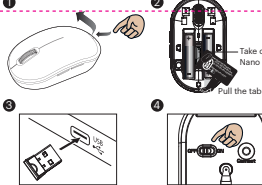
FCI ID: PRDM0133 / PRDR116

1

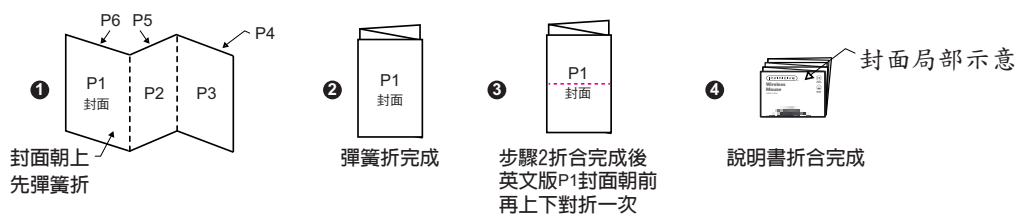
2

3

折線

| FCC STATEMENT | Specification | Trouble shooting |
|--|--|--|
| <p>This equipment has been tested and found to comply with the limits for a Class B digital device, pursuant to Part 15 of the FCC Rules. These limits are designed to provide reasonable protection against harmful interference in a residential installation. This equipment generates, uses and can radiate radio frequency energy and, if not installed and used in accordance with the instructions, may cause harmful interference to radio communications. However, there is no guarantee that installation in a particular installation. If this equipment does cause harmful interference to radio or television reception, which can be determined by turning the equipment off and on, the user is encouraged to try to correct the interference by one of the following measures:</p> <ul style="list-style-type: none"> • Reorient or relocate the receiving antenna. • Increase the separation between the equipment and receiver. • Connect the equipment into an outlet on a circuit different from that to which the receiver is connected. • Consult the dealer or an experienced radio/TV technician for help. | <p>Getting started</p> <p>Open battery cover, pull the tab to activate the batteries</p>  <ul style="list-style-type: none"> • Operating Systems: Microsoft Windows 7/8/10/11, Mac OS 10.5 or newer version • Magnetic cover with USB Nano receiver stored inside • Number of buttons: 5 (left/right-click, middle click, back and forward click) • DPI sensitivity: Fixed 1600 DPI • Connection: 2.4 GHz wireless connection • Wireless range: Up to 32 ft / 10 m • Battery Details: 2 x AAA (included) • Dimension: (L) 100 x (W) 59 x (H) 35.3 mm (L) 3.93 x (W) 2.32 x (H) 1.38 inch | <p>Mouse is not working?</p> <ol style="list-style-type: none"> 1. Is the mouse powered on? 2. Is the USB Nano receiver securely plugged into a USB-A port? <ul style="list-style-type: none"> • Try switching to another USB-A port • If it is plugged into a USB hub, try plugging it directly into a USB-A port on your computer 3. Check the orientation of the batteries inside of the mouse <p>If it still not working, try the steps below to connect the mouse and the receiver</p> <ol style="list-style-type: none"> A. Unplug and replug in the receiver B. Turn off and turn on the power again C. Press the connect button on mouse (Keep it close to the receiver) <ul style="list-style-type: none"> • If it does not work after 10 seconds, repeat steps A and B |
| <p>This device complies with Part 15 of the FCC Rules. Operation is subject to the following two conditions: (1) This device may not cause harmful interference, and (2) this device must accept any interference received, including interference that may cause undesired operation.</p> <p>Radiation Exposure Statement:</p> <p>The product complies with the FCC portable RF exposure limit set forth for an uncontrolled environment and are safe for intended operation as described in this manual. The further RF exposure reduction can be achieved if the product can be kept as far as possible from the user body or set the device to lower output power if such function is available.</p> <p>FCC Caution: Any changes or modifications not expressly approved by the party responsible for compliance could void the user's authority to operate this equipment.</p> | <p>Trademark notice</p> <p>Infinitive</p> <p>DISTRIBUTED BY: WALGREEN CO. DEERFIELD, IL 60015</p> <p>100% SATISFACTION GUARANTEED</p> <p>walgreens.com ©2024 Walgreen Co.</p> <p>Questions or comments ? 1-800-925-4733</p> | |

折線



| | | |
|---|--|--|
| Project Name: G75_for Walgreens(infinite LOGO)_Manual(Vietnam)_Outline_20240315.ai | | |
| REV. A | 印刷順序：印單色， *雙面 印刷先彈簧折，再上下對折 | PROCESS COLORS  K |
| DATE: 2024.03.15 | 紙 質：雙交紙，70磅 | |
| 比例 1:1 —— 裁切線 ----- 折線 | 尺 寸： 未折合前-寬222.75mm x 長105mm 折合後-寬74.25mm x 長52.5mm | |
| 簽 核： | | 製作者：Jones |