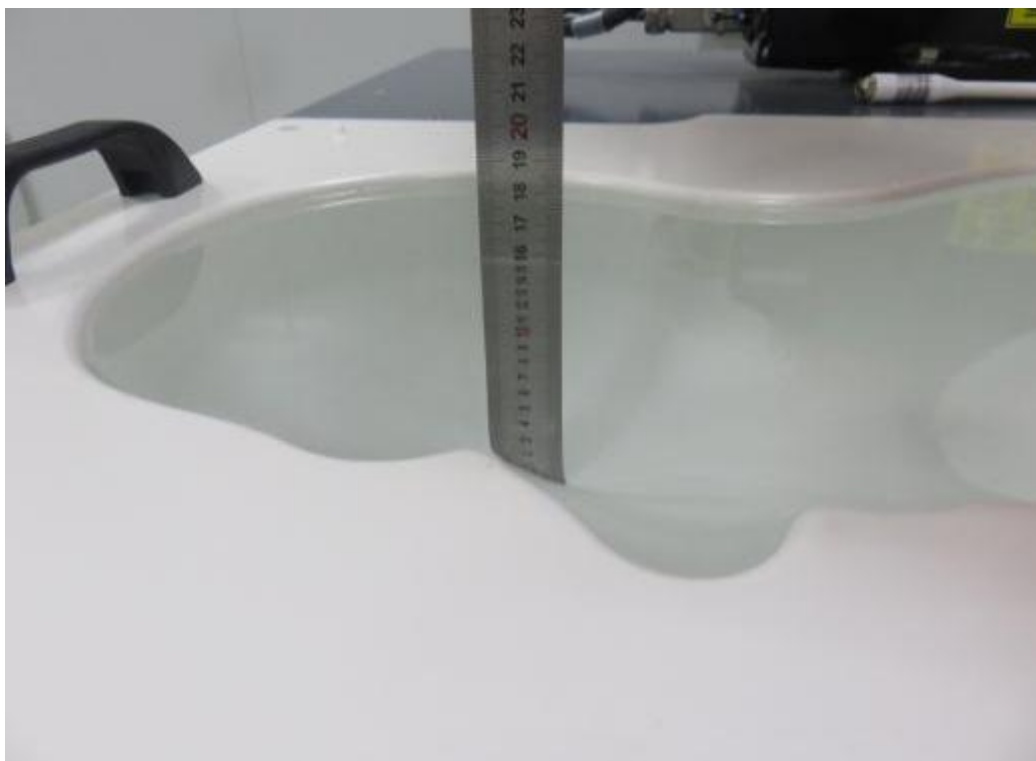
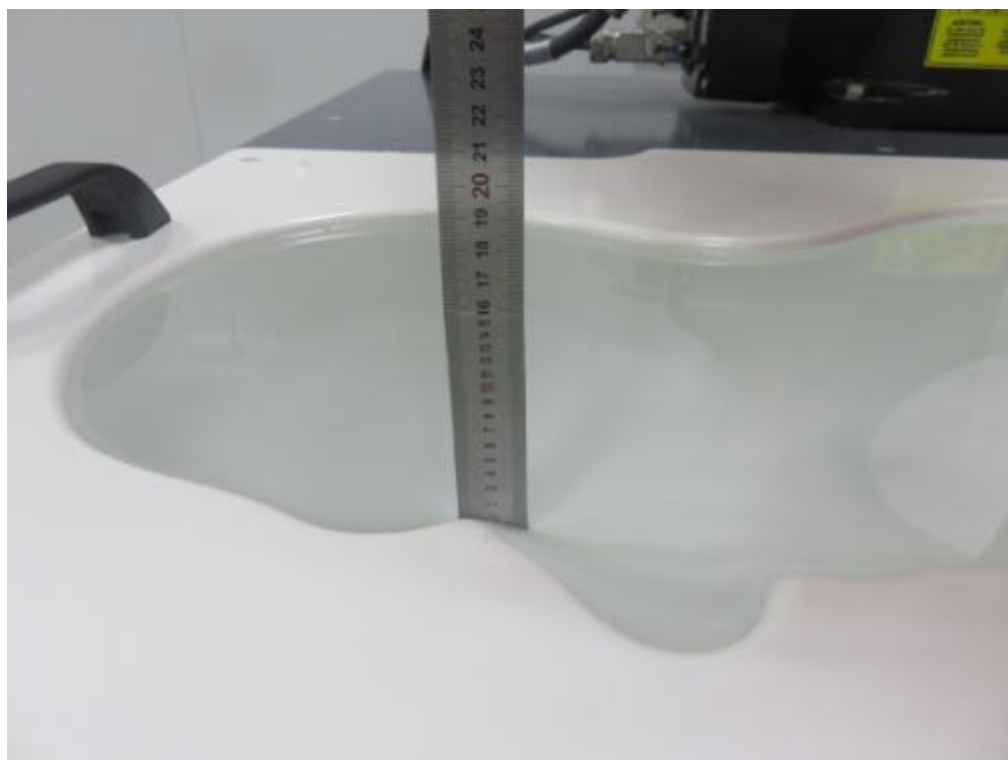


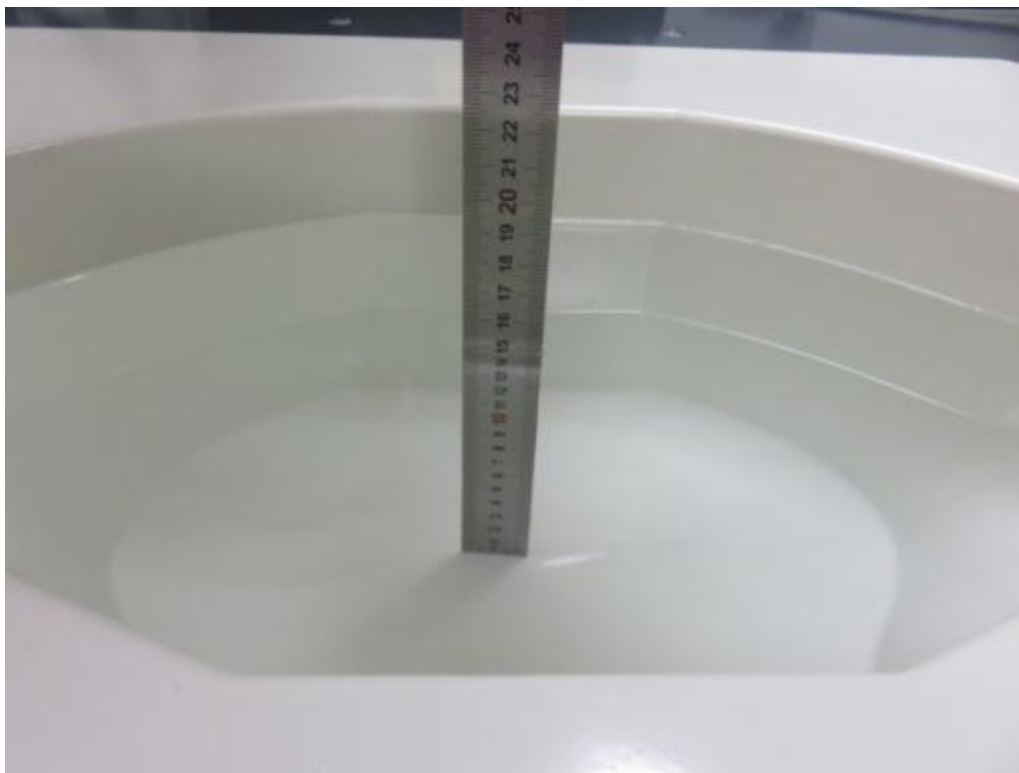
## **1. PHOTOGRAPH OF LIQUID DEPTH**



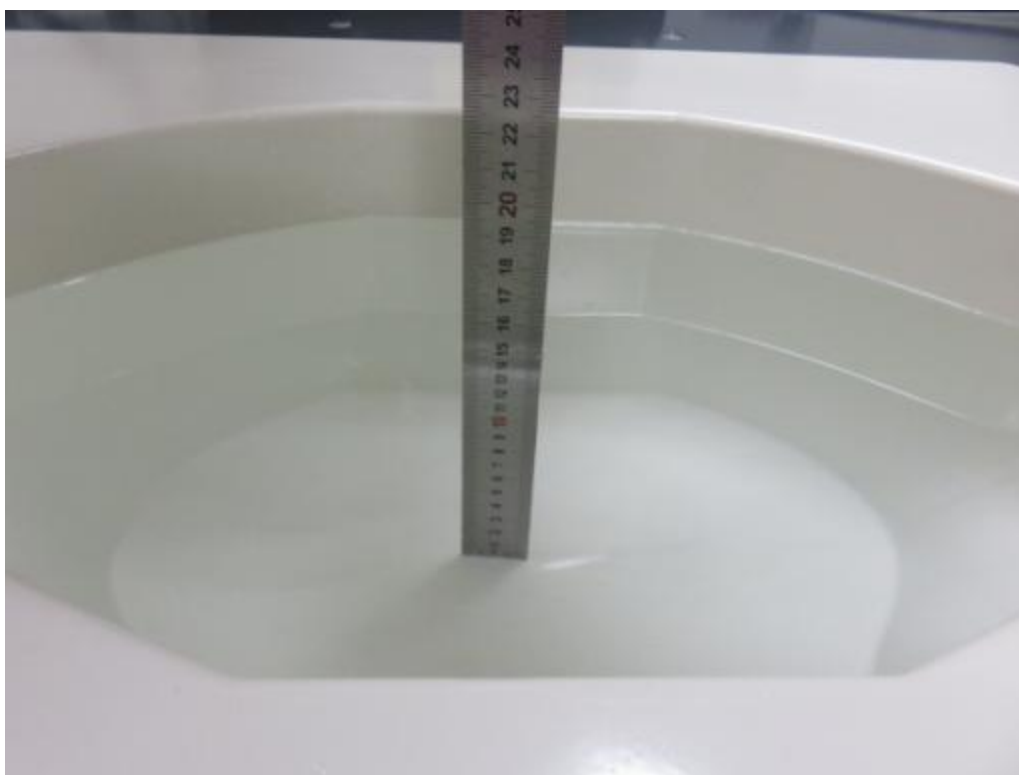
**Photograph of the depth in the Head Phantom (835MHz, 15.8cm depth)**



**Photograph of the depth in the Head Phantom (1900MHz, 15.7cm depth)**



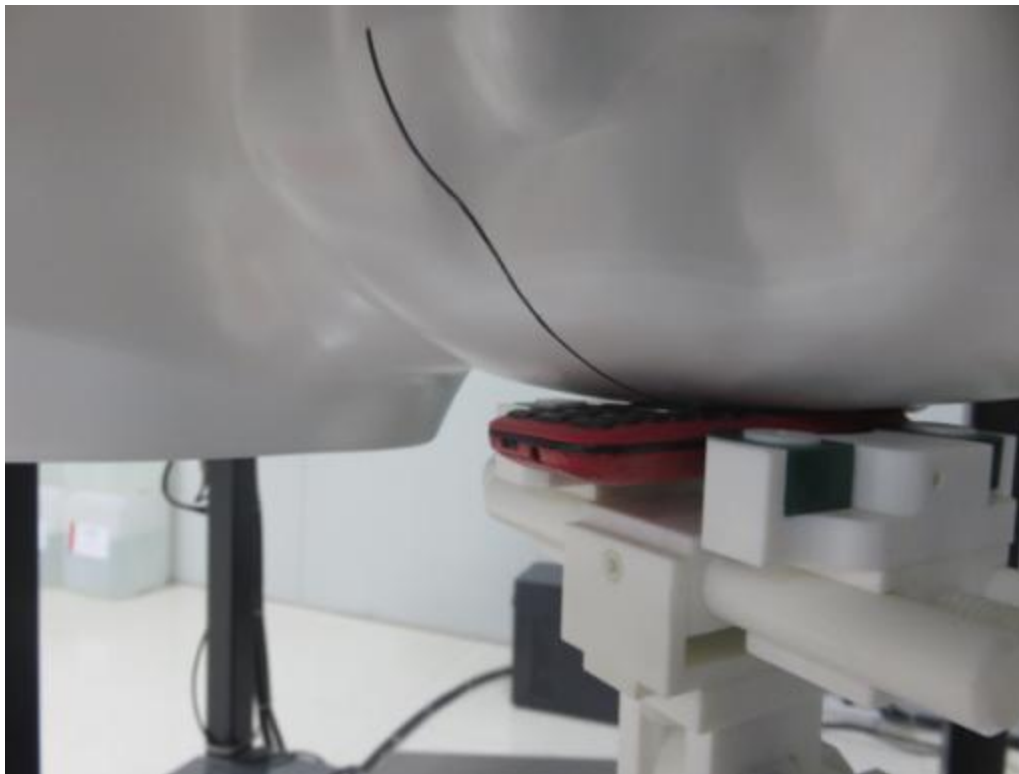
**Photograph of the depth in the Body Phantom (835MHz, 16.1cm depth)**



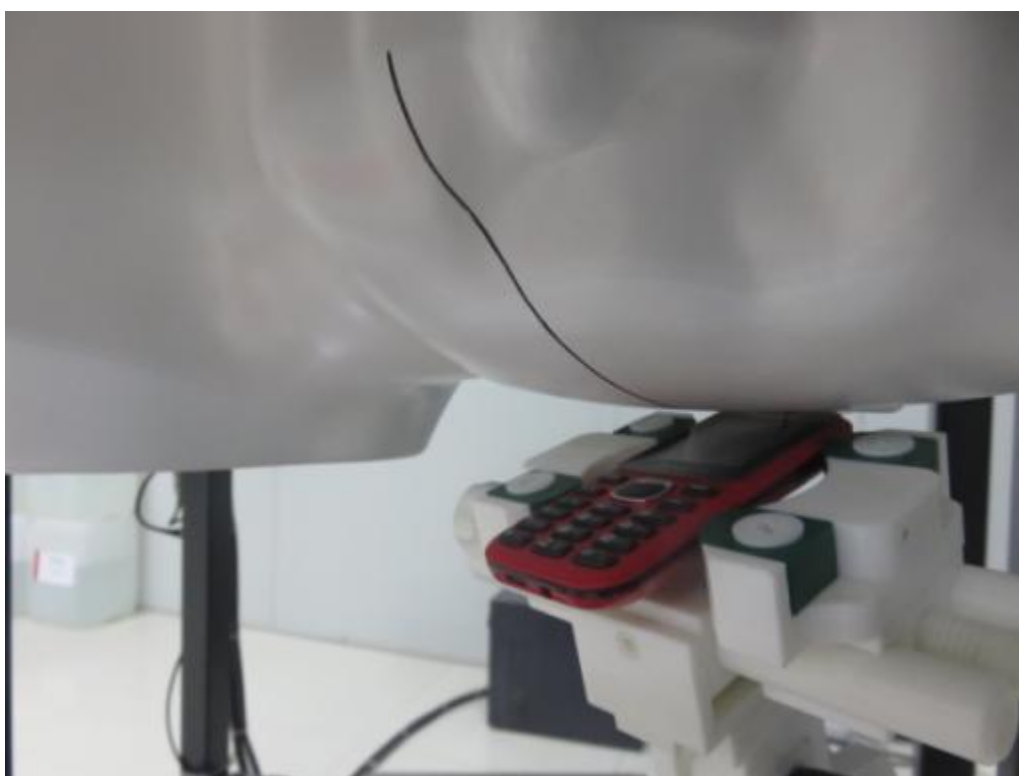
**Photograph of the depth in the Body Phantom (1900MHz, 16.0cm depth)**

## **2. PHOTOGRAPH OF TEST SETUP**

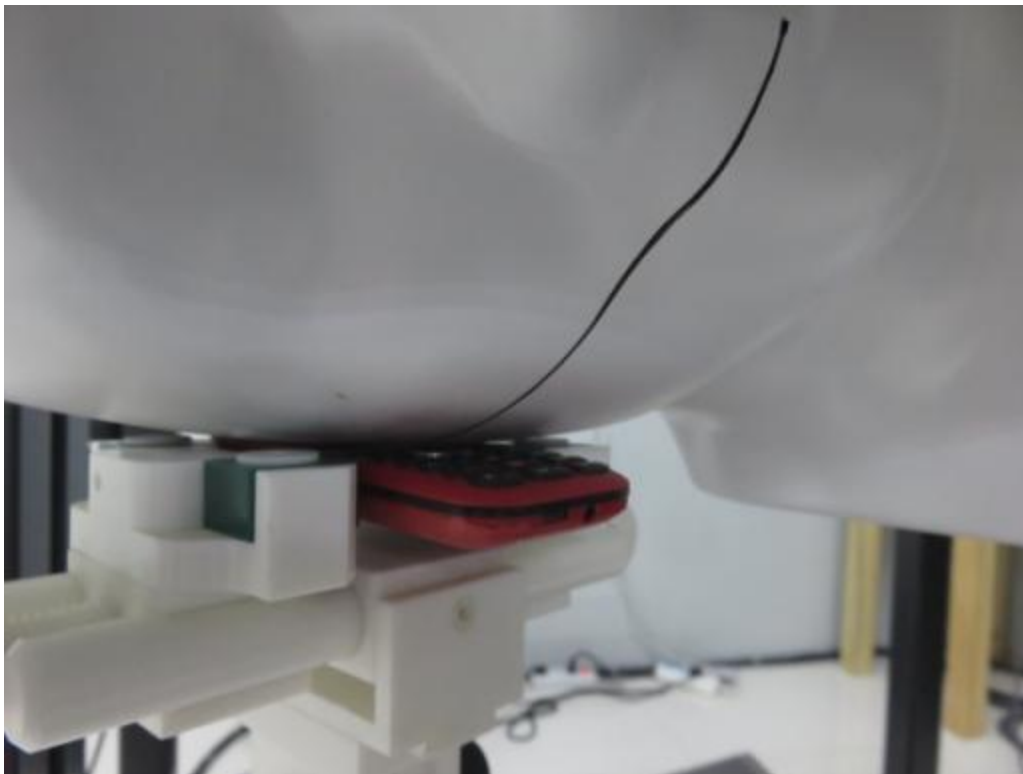
**Head Setup Photo (Left cheek)**



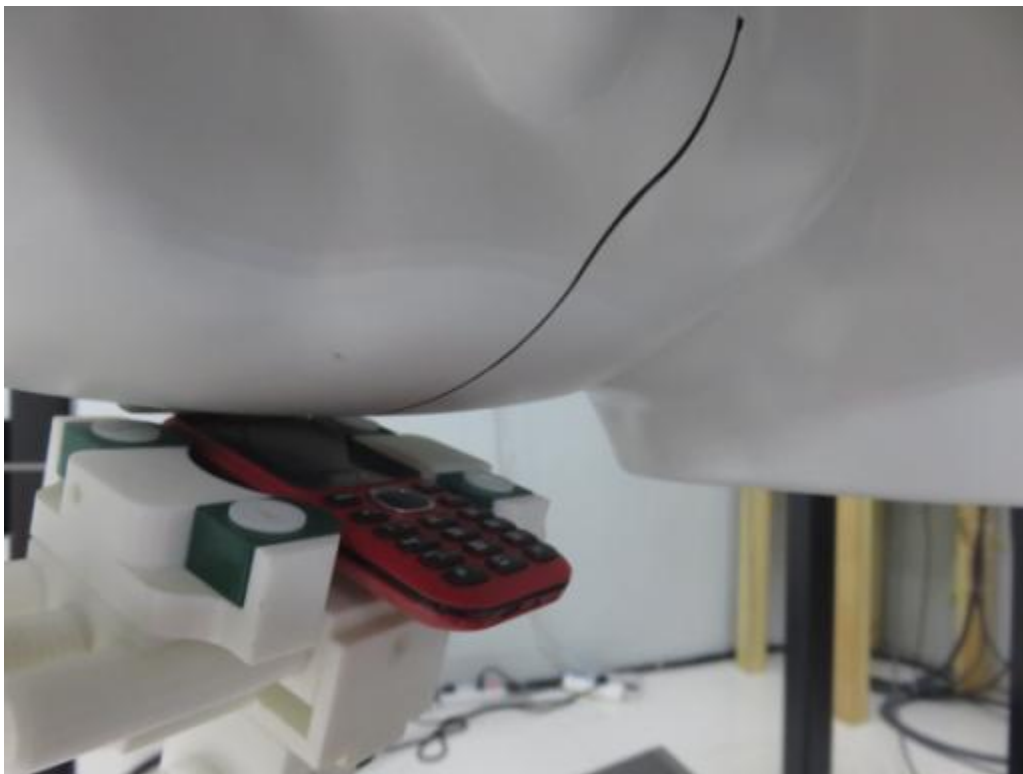
**Head Setup Photo (Left Tilt)**



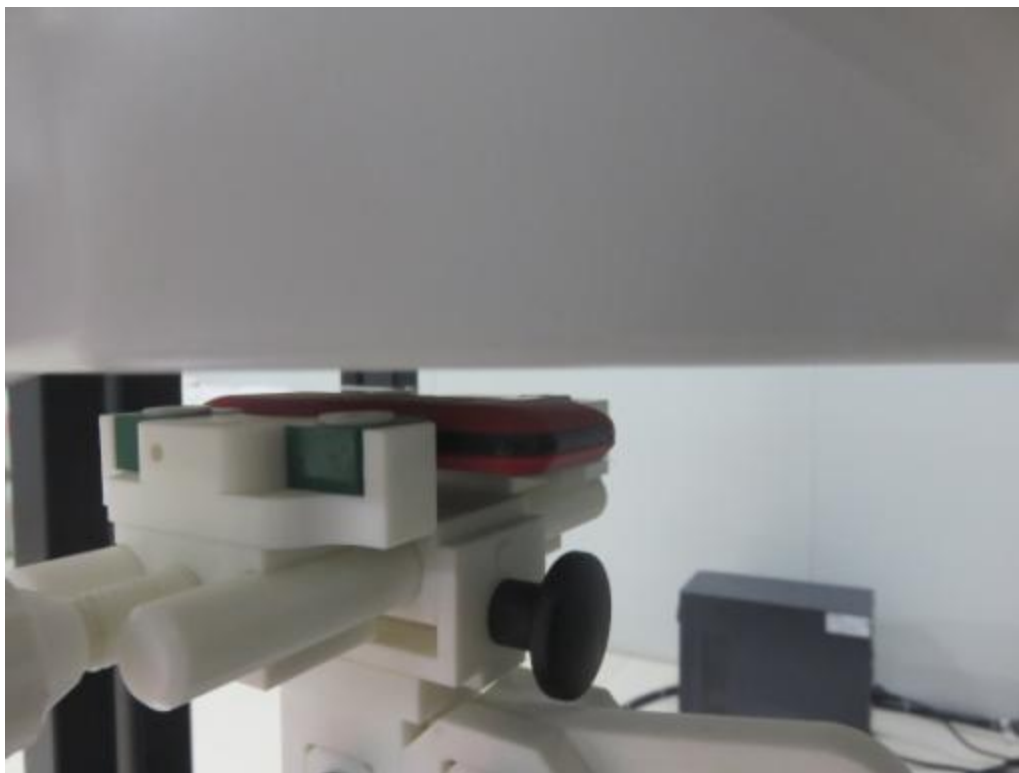
**Head Setup Photo (Right Cheek)**



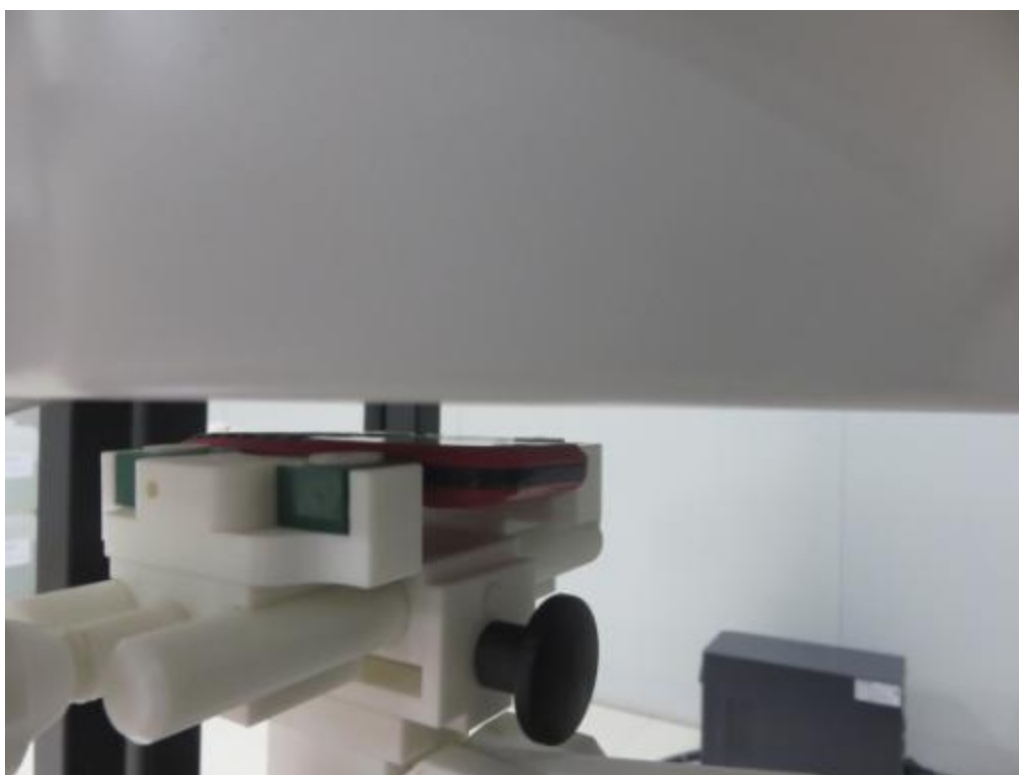
**Head Setup Photo (Right Tilt)**



**10mm body-worn Back Side Setup Photo**



**10mm body-worn Front Side Setup Photo**



### 3. EUT PHOTOGRAPHS

