



## Wireless Display Receiver

### Quick Start Guide<sup>rev1.0</sup>

#### Introduction

EZCast supports multiple wireless display standards, including EZCast, Miracast, DLNA and EZAir (compatible with iOS and macOS). Ongoing firmware upgrades are provided to support latest operating systems. Please read this guide to install and setup your EZCast. Happy Casting!

Support@EZCast.com

#### Learn More

Visit <https://www.EZCast.com> for more information.

Visit <https://www.YouTube.com/EZCast> for video tutorials.

#### Software Installation

Visit <https://www.EZCast.com/appt> to download platform-specific applications and User Manual.

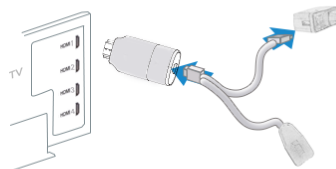
Scan the QR Code below to download EZCast mobile App.



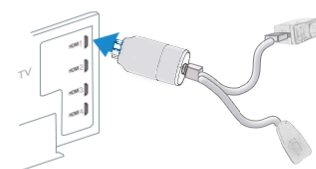
## Hardware Installation

1. Turn on your TV and power up the EZCast dongle by connecting the USB cable from the dongle to a USB adapter (5V1A). Please place the WiFi receiver at a location with good WiFi reception.
2. Plug the EZCast dongle into an HDMI port on your TV.
3. Set your TV's Source/Input selection to HDMI port connected to the EZCast dongle
4. Your EZCast dongle shall power on and display instructions on your TV screen. Please follow the instructions to complete setup

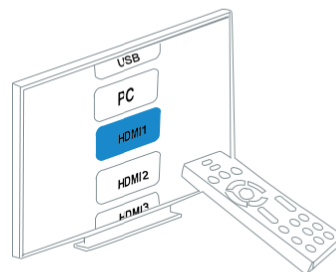
1



2



3



4



## Setup for Android

1. Turn on EZCast dongle. Scan QRCode on TV screen to download EZCast app.
2. Connect your Android device to EZCast via WiFi. Note: EZCast's WiFi SSID and Password are shown on TV screen. Please also connect EZCast to home router WiFi for Internet access and firmware upgrade.
3. Launch EZCast App on your Android.
4. Enable Screen Mirroring on EZCast App then your Android screen will appear on your TV.



## Setup for iOS (iPhone/iPad)

1. Turn on EZCast dongle. To discover more functions of EZCast, please scan QRCode on TV screen to download EZCast app from App Store.
2. Connect your iPhone/iPad to EZCast via WiFi. Note: EZCast's WiFi SSID and Password are shown on TV screen. Please also connect EZCast to home router WiFi for Internet access and firmware upgrade.
3. Swipe up on your iPhone and tap on Screen Mirroring, then select EZCast as target.
4. Your iPhone/iPad screen will appear on your TV.



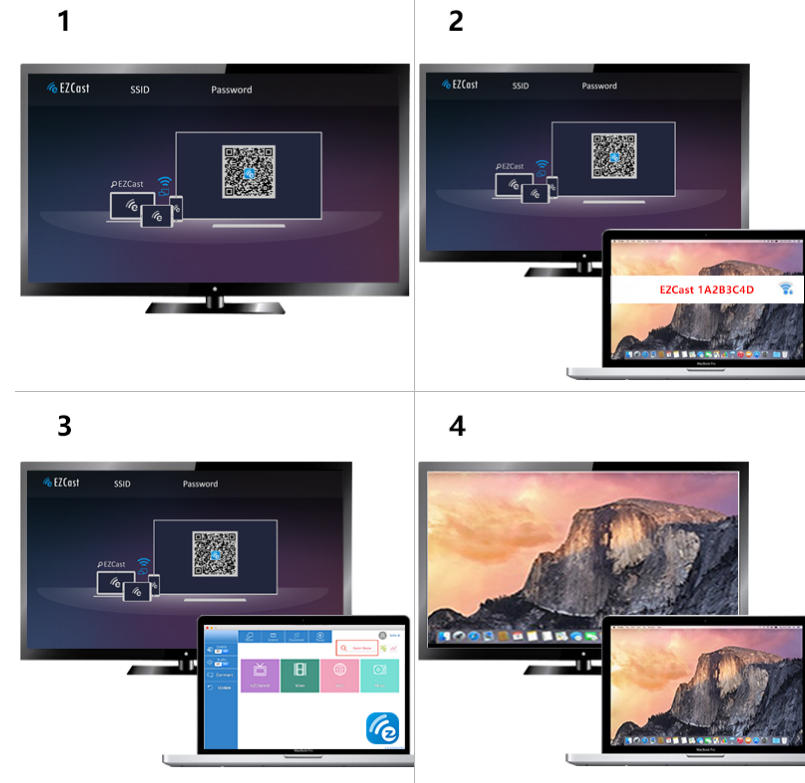
## Setup for Windows

1. Turn on EZCast dongle. Download and install EZCast application.
2. Connect your Windows with EZCast via WiFi. Note: EZCast's WiFi SSID and Password are shown on TV screen.
3. Launch EZCast application and connect EZCast to home router WiFi for Internet access and firmware upgrade.
4. Enable screen mirroring using EZCast application, and your Windows screen will appear on your TV.



## Setup for macOS

1. Turn on EZCast dongle after installation. Download and install EZCast application.
2. Connect your Mac with EZCast via WiFi. Note: EZCast's WiFi SSID and Password are shown on TV screen.
3. Launch EZCast application and connect EZCast to home router WiFi for Internet access and firmware upgrade.
4. Enable screen mirroring using EZCast application, and your Mac screen will appear on your TV.



# EZCast Mobile and Desktop Applications

1



Windows

2



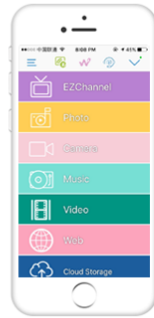
macOS

3



Android

4



iOS

## Settings and Firmware Upgrade

After connecting EZCast mobile or desktop applications to EZCast Dongle, you may change the settings of your EZCast dongle in the Setting page. The settings include:

- (1) Internet: Connect your EZCast Dongle to home router WiFi network
- (2) Upgrade: firmware upgrade for EZCast Dongle over Internet

(3) Resolution: Change the HDMI output resolution of EZCast

(4) EZAir mode: “Mirror only” for iOS 9, iOS 10, iOS 11.2+ and macOS. “Mirror+Streaming” for iOS 11.0.x, iOS 11.1.x

(5) EZChannel: Switch the auto-play function on/off

## Features of EZCast

(1) EZChannel:

- Discover and personalize your video channels.
- Search videos across different sites
- Auto-play: Start video streaming from Internet once you turn on EZCast dongle.

Note: You need to create an EZCast account and connect with EZCast.

(2) Video / Photo / Music: Streaming local media files from Android/iOS/Windows/macOS to EZCast dongle wirelessly, and playback.

(3) Live Camera: Capture video from local Camera to EZCast dongle.

(4) DLNA: Stream multimedia files via DLNA protocol.

(5) Cloud Storage: Access data from Cloud server (Dropbox, Google drive, or etc.)



©2018Actions Microelectronics Co., Ltd. All right reserved. EZCast are trademarks of Actions Microelectronic Co., Ltd., registered in US, Europe, and other countries. Other product and company names mentioned herein may be trademarks other respective companies.

## Warning:

This device complies with Part 15 of the FCC Rules. Operation is subject to the following two conditions: (1) this device may not cause harmful interference, and (2) this device must accept any interference received, including interference that may cause undesired operation.

changes or modifications not expressly approved by the party responsible for compliance could void the user's authority to operate the equipment.

NOTE: This equipment has been tested and found to comply with the limits for a Class B digital device, pursuant to Part 15 of the FCC Rules. These limits are designed to provide reasonable protection against harmful interference in a residential installation. This equipment generates, uses and can radiate radio frequency energy and, if not installed and used in accordance with the instructions, may cause harmful interference to radio communications. However, there is no guarantee that interference will not occur in a particular installation. If this equipment does cause harmful interference to radio or television reception, which can be determined by turning the equipment off and on, the user is encouraged to try to correct the interference by one or more of the following measures:

- Reorient or relocate the receiving antenna.
- Increase the separation between the equipment and receiver.
- Connect the equipment into an outlet on a circuit different from that to which the receiver is connected.
- Consult the dealer or an experienced radio/TV technician for help.

NOTE: This device and its antenna(s) must not be co-located or operation in conjunction with any other antenna or transmitter

## RF Exposure Statement

To maintain compliance with FCC's RF Exposure guidelines, This equipment should be installed and operated with minimum distance of 20cm from the radiator to your body. This device and its antenna(s) must not be co-located or operation in conjunction with any other antenna or transmitter