



CASTLES TECHNOLOGY

POS Cradle

Book 2

User Manual

S1F4B

Confidential

Version 1.0

Feb. 2025

CRT-S1-34-02-V1.0

Castles Technology Co., Ltd.

6F, No. 207-5, Sec. 3, Beixin Rd., Xindian District,
New Taipei City 23143, Taiwan R.O.C.

<http://www.castech.com.tw>

WARNING

Information in this document is subject to change without prior notice.

No part of this publication may be reproduced, transmitted, stored in a retrieval system, nor translated into any human or computer language, in any form or by any means, electronic, mechanical, magnetic, optical, chemical, manual, or otherwise, without the prior written permission of **Castles Technology Co., Ltd.**

All trademarks mentioned are proprietary to their respective owners.

Revision History

<i>Version</i>	<i>Date</i>	<i>Descriptions</i>	<i>Author</i>
1.0	2025.02.20	Initial creation.	Yao

Contents

1. Introduction	5
2. Hardware Setup	6
2.1. Parts of S1F4B	6
2.2. Power on S1F4B & Charge S1F4	9
3. Basic Operation	10
3.1. S1F4B Connection mode (via Wi-Fi)	11
3.2. S1F4B Connecting to Ethernet	12
4. Appendix	14
4.1. FCC	14
4.2. IC	15
4.3. UL	16

1. Introduction

This document provides a guideline on operating and configuring Castles S1 cradle
The scope of this document includes setting up and basic operation.

Regulatory instruction of usage

- Before using the cradle, please check has it been disassembled, modified, or showed abnormal situation. If yes, please do not use.
- Please stay away from strong electromagnetic waves.
(Example) Microwave ovens, magnets, shoplifting prevention devices, high-voltage wires, automatic doors, communication antennas, etc.
- Condensation can occur when moving from a cold place to a warm place. If condensation occurs, do not use the unit until the connected water droplets evaporate.
- Static electricity may occur in some places (such as where you use a carpet).
- Please do not leave it in the sun for a long time.
- Please operate the unit carefully as it is a precision instrument. Do not apply impact, drop or heavy objects on top of the unit.
- Do not attach dust, oil, etc. to a part of the power terminal. Also, please do not scratch.

2. Hardware Setup

2.1. Parts of S1F4B

S1F4Pro & S1F4B



Front/Top



1. Charging Pins

Left



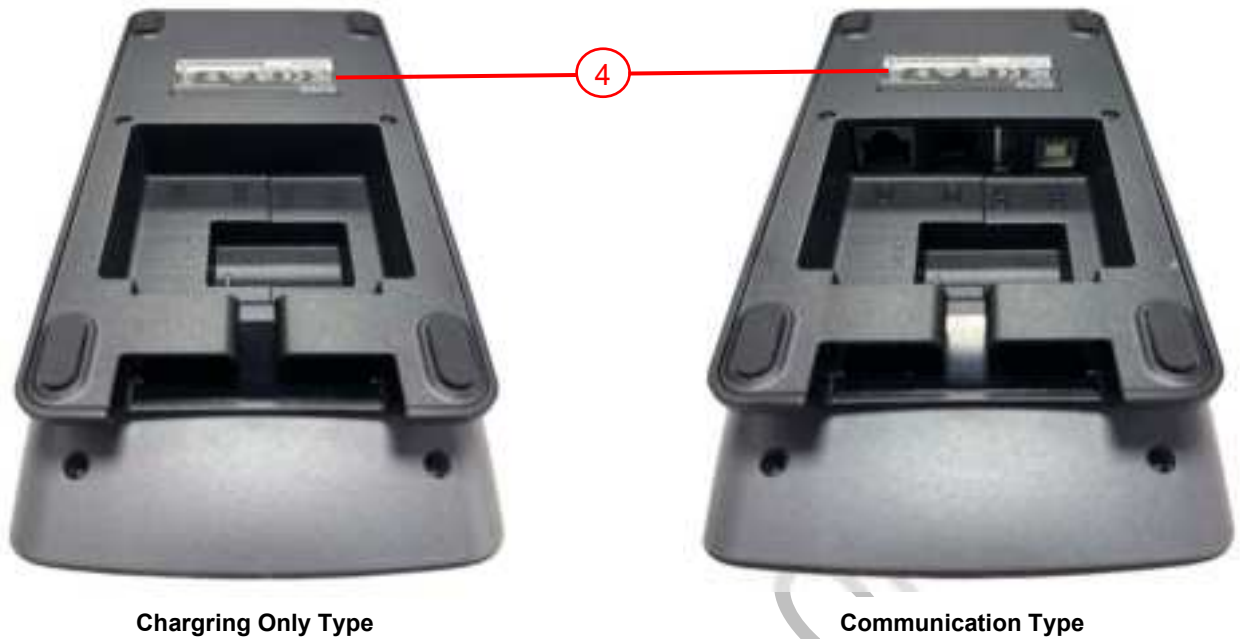
2. Power Indicator

Right



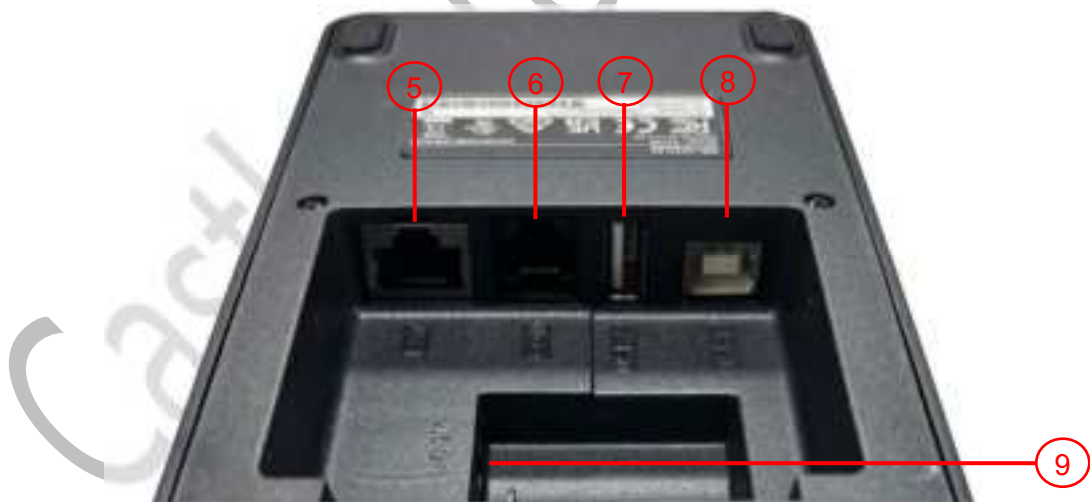
3. WiFi Signal Indicator

Rear



4. Product Label

Rear



- 5. LAN Port**
- 6. COM Port**
- 7. USB Type-A**
- 8. USB Type-B**
- 9. DC Jack**

2.2. Power on S1F4B & Charge S1F4



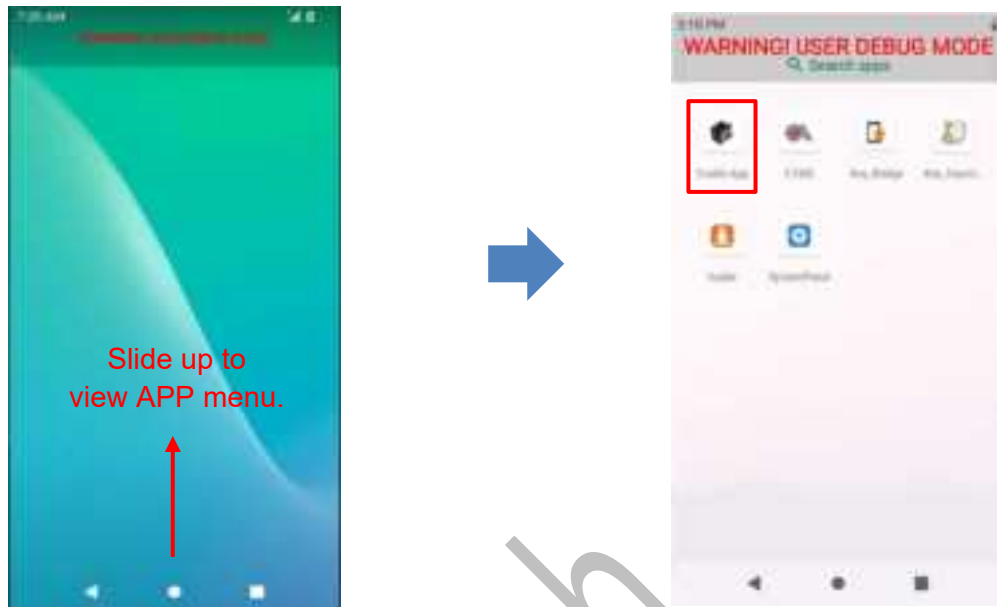
Step1: Plug the DC jack cable into DC jack connector on the rear part of S1F4B.

Step2: The power indicator on the left front side of S1F4B will light up immediately after plugging the DC jack.

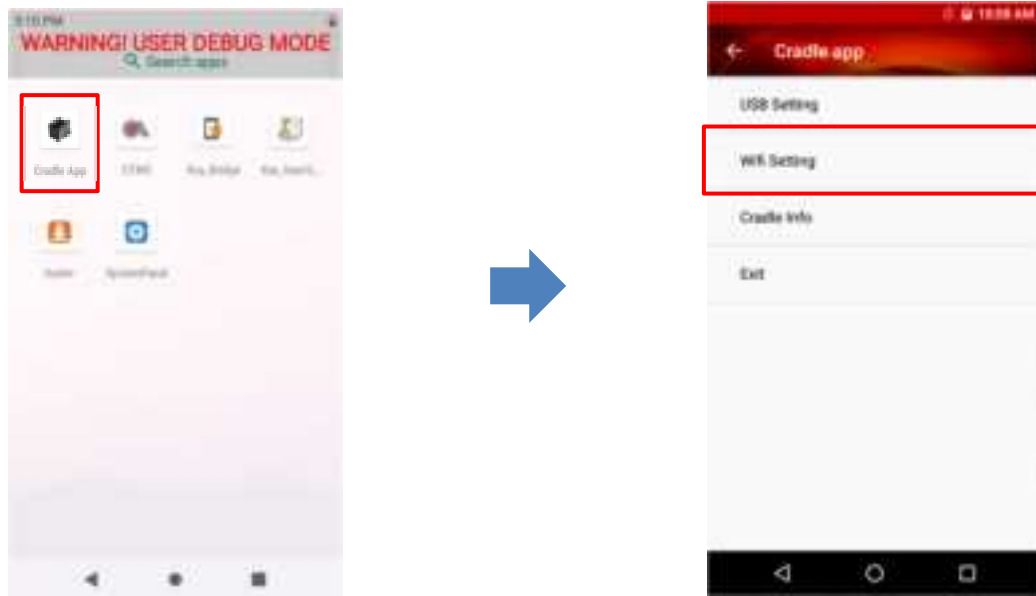
Step3: Put S1F4 on S1F4B, then the POS cradle will charge S1F4.

3. Basic Operation

Users can set up the WiFi connection between terminal and POS cradle via the Cradle APP, which is a default application and it could be found in the APP menu.

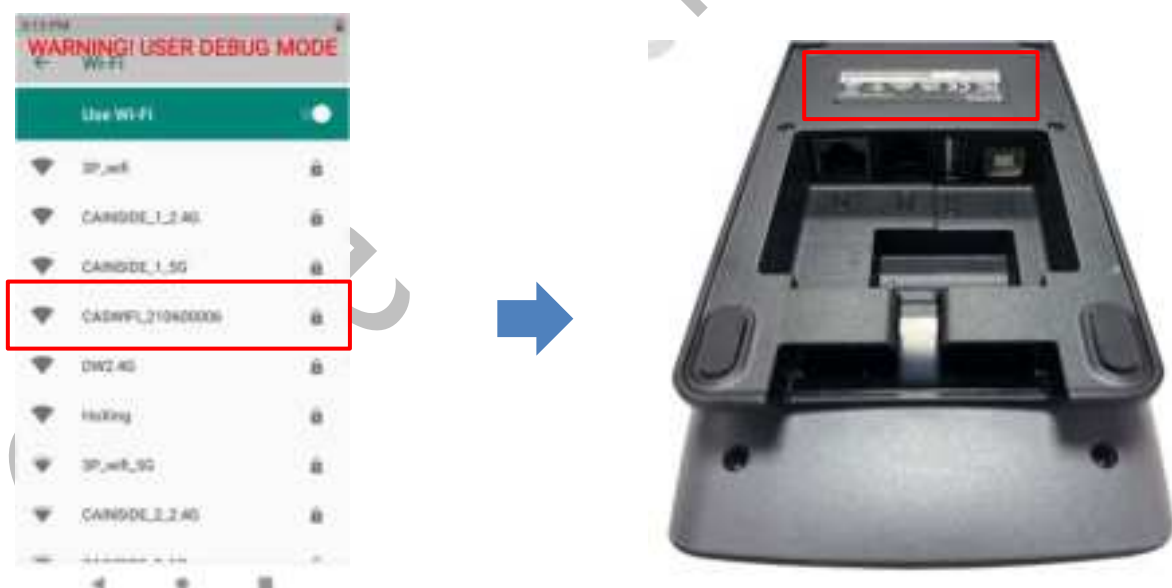


3.1. S1F4B Connection mode (via Wi-Fi)

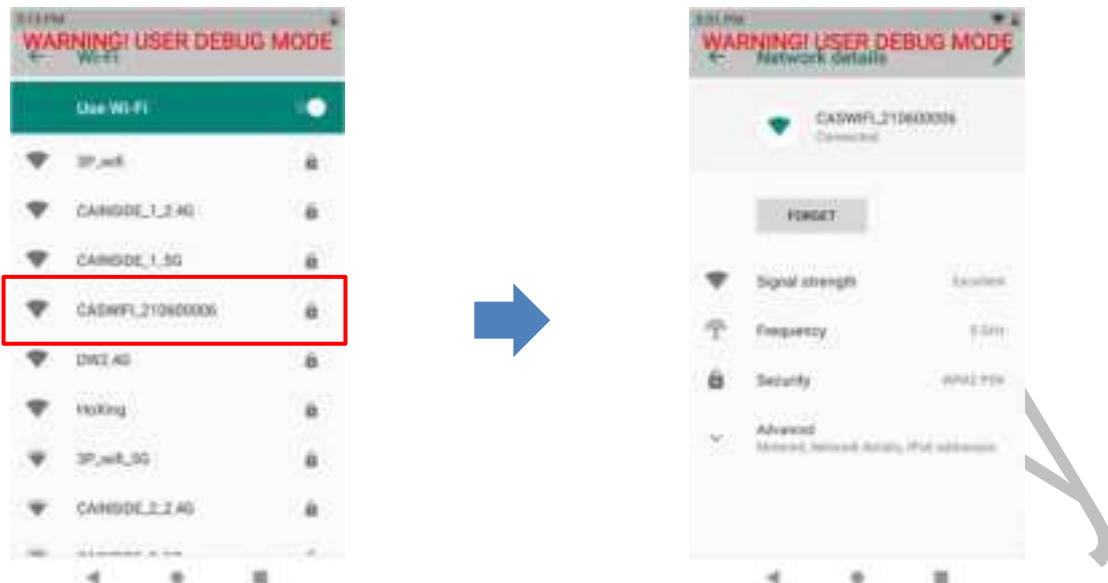


Step1: Click the “Cradle APP” in the APP menu.

Step2: Select “Wifi Setting.”



Step3: Find the SSID of the wifi signal brocasting by the POS cradle. The naming rule of SSID is “CASWIFI_XXXXXXXX” The last 9 digits match the last 9 digits of the POS cradle serial number. The serial number could be found on the product label.

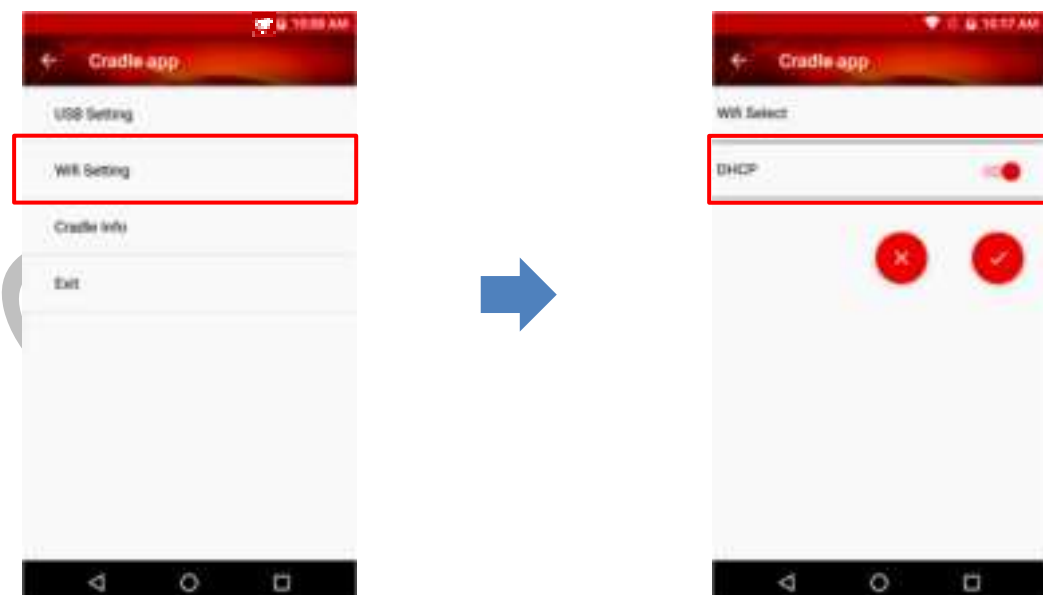


Step4: Select the right one and connect to it. The default password is “9876543210”

3.2. S1F4B Connecting to Ethernet

Step 1: Make Sure the Wifi connection between Android terminal and POS cradle has established.

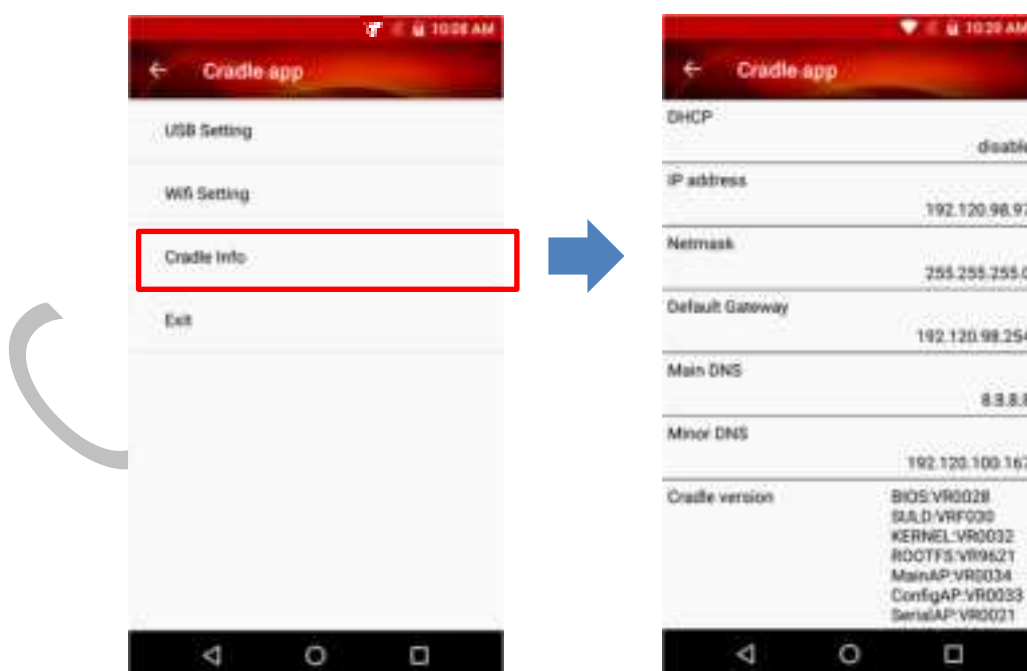
Step 2: Select “Wifi Setting” in Cradle APP.



Step 3(Optional): The default setting of “DHCP” is On, if you want to set Static IP address, switch off “DHCP” and input the IP settings.



Step4: After connecting to the Ethernet, you can check the information in “Cradle Info” of the Cradle APP.



4. Appendix

4.1. FCC

Federal Communication Commission Interference Statement

This device complies with Part 15 of the FCC Rules. Operation is subject to the following two conditions: (1) This device may not cause harmful interference, and (2) this device must accept any interference received, including interference that may cause undesired operation.

This equipment has been tested and found to comply with the limits for a Class B digital device, pursuant to Part 15 of the FCC Rules. These limits are designed to provide reasonable protection against harmful interference in a residential installation. This equipment generates, uses and can radiate radio frequency energy and, if not installed and used in accordance with the instructions, may cause harmful interference to radio communications. However, there is no guarantee that interference will not occur in a particular installation. If this equipment does cause harmful interference to radio or television reception, which can be determined by turning the equipment off and on, the user is encouraged to try to correct the interference by one of the following measures:

- Reorient or relocate the receiving antenna.
- Increase the separation between the equipment and receiver.
- Connect the equipment into an outlet on a circuit different from that to which the receiver is connected.
- Consult the dealer or an experienced radio/TV technician for help.

FCC Caution:

- Any changes or modifications not expressly approved by the party responsible for compliance could void the user's authority to operate this equipment.
- This transmitter must not be co-located or operating in conjunction with any other antenna or transmitter.

Radiation Exposure Statement:

This equipment complies with FCC radiation exposure limits set forth for an uncontrolled environment. This equipment should be installed and operated with minimum distance 20cm between the radiator & your body.

Note: The country code selection is for non-US model only and is not available to all US model. Per FCC regulation, all WiFi product marketed in US must fixed to US operation channels only.

4.2. IC

Industry Canada statement

This device complies with ISED's licence-exempt RSSs. Operation is subject to the following two conditions: (1) This device may not cause harmful interference, and (2) this device must accept any interference received, including interference that may cause undesired operation. Le présent appareil est conforme aux CNR d'ISED applicables aux appareils radio exempts de licence. L'exploitation est autorisée aux deux conditions suivantes : (1) le dispositif ne doit pas produire de brouillage préjudiciable, et (2) ce dispositif doit accepter tout brouillage reçu, y compris un brouillage susceptible de provoquer un fonctionnement indésirable.

Radiation Exposure Statement

This equipment complies with ISED radiation exposure limits set forth for an uncontrolled environment. This equipment should be installed and operated with greater than 20cm between the radiator & your body.

Déclaration d'exposition aux radiations

Cet équipement est conforme aux limites d'exposition aux rayonnements ISED établies pour un environnement non contrôlé. Cet équipement doit être installé et utilisé à plus de 20cm entre le radiateur et votre corps.

For indoor use only.

Pour usage intérieur seulement.

4.3. UL

- **Warning:**

Power cord shall be connected to a socket-outlet with earthing connection.

- **Warning:**

Risk of explosion if battery is replaced by an incorrect type. Dispose of expended battery in accordance with local disposal regulations.

- **Warning:**

This product is intended to be supplied by a Listed Power Adapter "L.P.S." (Or "Limited Power Source") and is rated at 9-48 Vdc, 1.5-0.5 A min., Tma = 50 degrees C.

- **Warning:**

The equipment is only suitable for mounting wall at height $\leq 2\text{m}$.

- **Attention:**

le cordon d'alimentation doit être branché sur une prise secteur avec mise à la terre.

- **Attention:**

Risque d'explosion si la batterie est remplacée par une de type incorrect Éliminer la pile usagée conformément à la réglementation locale en vigueur.

- **Attention:**

Le produit est destiné à être alimenté par un adaptateur secteur répertorié « L.P.S. » (ou "Source d'alimentation limitée") et est évalué à 9-48 Vdc, 1.5-0.5 A min., Tma = 50 degrés C.

- **Attention:**

L'équipement ne convient que pour un montage mural à une hauteur $\leq 2\text{ m}$.

END