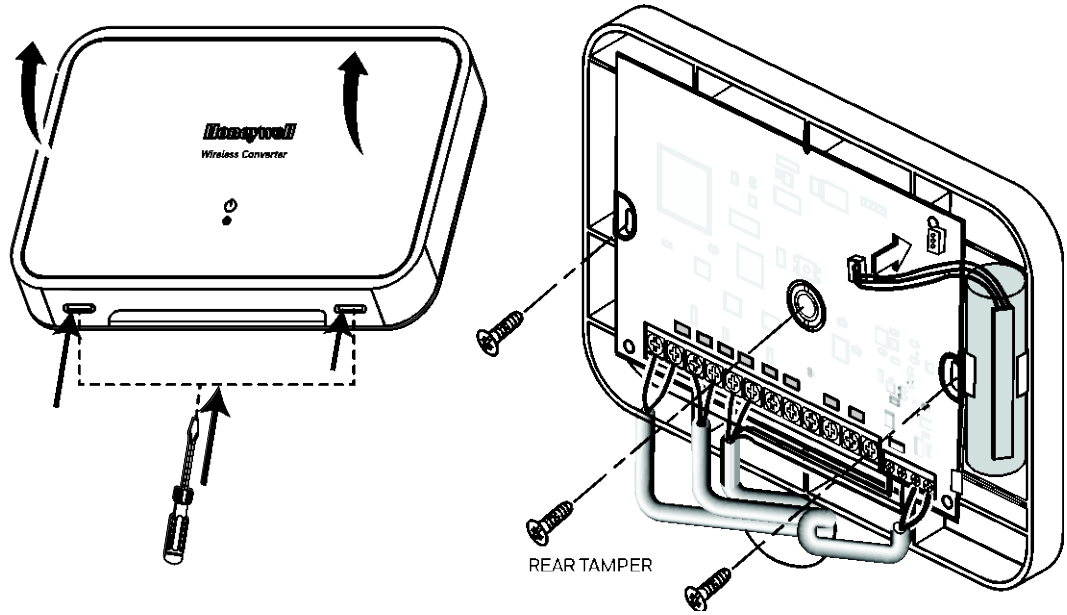




MOUNTING / MONTAGE



Signal strength:

- Rang of 1–4 bars (green), should be a minimum 1 green bar for the zone being programmed.
- Four Red Bards indicate poor signal strength; the device should be relocated.
- See the controller’s instruction for bar indication signal strength values.

Icon	Description	Signal Strength
	4 Green Bars	Good
	3 Green Bars	
	2 Green Bars	
	1 Green Bar	
	4 Red Bars	Relocate

TAMPER/LOW BATTERY REPORTING

The SiXC2W reports this condition to the control. If a low battery or tamper condition exists all zones used on the module shows a trouble on the control.

TAMPER/LOW BATTERY REPORTING

The SiXC2W reports this condition to the control. If a low battery or tamper condition exists all zones used on the module shows a trouble on the control.

IMPORTANT:

The first battery test occurs 1 hour after power up. To quickly verify a good backup battery, unplug and then plug back in the power supply; the system will perform a battery test within 1 minute.

IMPORTANT:

The first battery test occurs 1 hour after power up. To quickly verify a good backup battery, unplug and then plug back in the power supply; the system will perform a battery test within 1 minute.

LED INDICATIONS

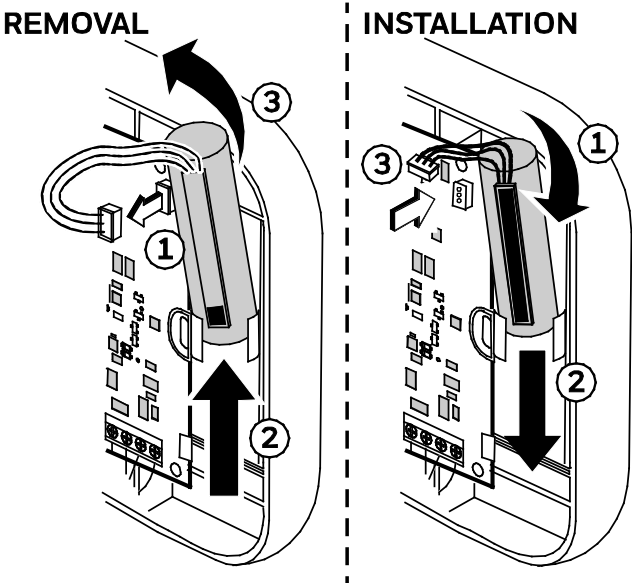
LED # / LED #	Functions / Functions
1 (Green / Green)	Blinks once upon RF signal transmission (HW zone trigger/tamper and/or a fault message), slow blink for a cover tamper, quick blinks for enrollment or deletion / <b>Blinks once upon RF signal transmission (HW zone trigger/tamper and/or a fault message), slow blink for a cover tamper, quick blinks for enrollment or deletion</b>
2 (Red / Red)	Blinks 1s / 1s off when module needs calibrating / Blinks 1s / <b>1s off when module needs calibrating</b>
3 (Green / Green)	Steady on when the module has been calibrated. / <b>Steady on when the module has been calibrated.</b>
4 (Green and Red / Green and Red)	Green: 5VDC Power from the plug-in transformer is present Red (blinking 1sec on / 1 sec off): Running on battery, DC power not present. / <b>Green: 5VDC Power from the plug-in transformer is present Red (blinking 1sec on / 1 sec off): Running on battery, DC power not present.</b>

Approval Listings / Approbations Homologations:

FCC / IC - ETL Listed to UL268 & 521  
cETL Listed to ULC S530 & S531  
Other Standards / Autres normes: RoHS



BATTERY REMOVAL AND INSTALLATION



**Caution:** The batteries used in this device may present a fire or chemical burn hazard if mistreated. Do not recharge, disassemble, heat above 212°F (100°C) or dispose of in fire. Use Panasonic CR123A or DURACELL DL123, DL 123A Lithium batteries. Use of other batteries may present a risk of fire or explosion. Keep used batteries away from children. Dispose of used batteries properly.

Remove old batteries. Wait 10 seconds and then replace with four new batteries. To avoid a low battery indication when installing new batteries, both batteries must be installed within 15 seconds of installing the first one. Any low battery condition that may have occurred should clear when the back plate is installed.

**Mise en garde :** Les piles utilisées dans ce dispositif peuvent présenter des risques d'incendie ou de brûlure chimique si elles sont mal traitées. Ne rechargez pas, ne désassemblez pas, ne faites pas chauffer et ne jetez pas au feu les piles à plus de 100 °C (212 °F). Utilisez des piles au lithium Panasonic CR123A ou DURACELL DL123, DL 123A. L'utilisation d'autres types de piles peut présenter des risques de feu ou d'explosion. Gardez les vieilles piles hors de la portée des enfants. Débarrassez-vous des batteries utilisées de façon appropriée.

Retirez les vieilles piles. Attendez 10 secondes et remplacer-les par quatre nouvelles piles. Pour éviter une indication de piles faibles lorsque vous installez de nouvelles piles, les dos (2) piles doivent être installées en deçà de 15 secondes après l'installation de la première. Toute condition de piles faibles qui aurait pu se produire devrait être rétablie une fois la plaque arrière installée.

REFER TO THE INSTALLATION INSTRUCTIONS FOR THE CONTROL WITH WHICH THIS DEVICE IS USED, FOR DETAILS REGARDING LIMITATIONS OF THE ENTIRE ALARM SYSTEM.  
POUR LES LIMITES DU SYSTÈME D'ALARME AU COMPLET, REPORTEZ-VOUS AU GUIDE D'INSTALLATION DU PANNEAU DE COMMANDE

See *Honeywell Installation Guide* P/N 800-24139–  
<https://mywebtech.honeywell.com/>.

*Voir les instructions d'installation complètes 800-24139-  
<https://mywebtech.honeywell.com/>.*

Support / Pour de l'assistance en ligne, visitez :

<https://mywebtech.honeywell.com/>

**U.S. warranty / U.S. garantie:** [www.honeywell.com/security/hsc/resources/wa](http://www.honeywell.com/security/hsc/resources/wa)

**For patent info, see: / Pour des informations sur les brevets, voir :**  
[www.honeywell.com/patents](http://www.honeywell.com/patents)



MyWebTech



Warranty / Garantie



Patents / brevets

SPECIFICATIONS / SPÉCIFICATIONS:

<b>Voltage</b>	
Transformer Part # .....	300-10259
Input Voltage .....	100 ~ 240VAC, 50 ~60 Hz
Operating Voltage .....	5VDC
Maximum Transformer Distance .....	9.8ft. (3m)
Voltage Output .....	12VDC @ 100mA (Up to three sets of 20–24 gauge wiring)
Battery/ Pile .....	P/N 300-10342
<b>Environmental</b>	
Operating Temp .....	14 °F (-10°C) to 140°F (60°C)
<b>NOTE:</b> Charging the lithium battery stops when temperature is below 32°F (0°C)	
Relative Humidity .....	95%, Non-condensing / 95% max. sans condensation
<b>Physical</b>	
Dimensions .....	Length 7.0 in (178 mm) x Width 4.5 in (114 mm) x Depth 1.5 in (38mm)
Mounting Hardware .....	Double stick tape and screws
Zone Resistance .....	1K to 10K Ohm EOL Resistors
Zone Wiring .....	1,000ft (Each Zone)
<b>Radio Frequency</b>	
Transmission Range .....	300ft (91.5m)