

BS346FN

TWS Bluetooth Earbuds User Manual FCC ID:2AIXN346FN

Bluetooth earbuds should be used with the compatible devices which support bluetooth wireless technology, making calls and enjoying music at any time freely.
Please read this user manual carefully, and also read your device's user manual about bluetooth functions carefully before using.
Please pay attention to those important safety and maintenance information.

Please keep your earbuds away from children.

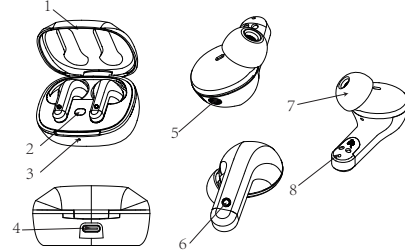
Specifications

Bluetooth Version :	V5.2
Bluetooth Profiles Supported :	HSP, HFP, A2DP, AVRCP
Audio Decoding Protocol :	SBC, AAC
Transmission Power :	Class 2
Operation Range :	Up to 10 meters
Frequency Range :	2.4GHz-2.48GHz
Battery of Earbuds :	45mAh Li-polymer Battery
Charging Voltage of Earbuds :	DC 5V±0.2V
Charging Time of Earbuds :	About 1~1.5 hours
Battery of Base :	380mAh Li-polymer Battery
Charging Voltage of Charging Case :	DC 4.75V-5.25V
Charging Time of Case :	About 1~1.5 hours
Charging Earbuds from Charging Case :	2-3 times
Music Playing Time :	≥ 7 hours (50% volume)
Talk Time :	≥ 4 hours (50% volume)
Standby Time of TWS connect with mobile :	About 70 hours
Driver Diameter :	φ12mm
Driver sensitivity :	114±1.5dB (1KHz)
Driver impedance :	32Ω±15%
Driver frequency response :	20Hz-20KHz
ANC frequency response :	80Hz-1.5KHz
ANC average depth :	≥22dB
ANC maximum depth :	≥30dB
Dimensions of Charging Case (mm) :	L61×W45.5×H31.1
Dimensions of earbuds (mm) :	L34×W22.2×H23.5
Weight (single earbud) :	About 4.9g
Total Weight :	About 48g
Charging Ambient :	0 C ~45 C
Non-charging Ambient :	-10 C ~60 C
Storage Ambient :	-20 C ~40 C

*The time mentioned above may vary due to user's operation habits and device settings.

GuangZhou U&I Technology Company Limited

Structure sketch



- 1) Charging case opening snap
- 2) Charging case button
- 3) Charging case indicator
- 4) Charging case type-C port
- 5) Earbud noise cancellation mic hole
- 6) Earbud touch panel
- 7) Eartips
- 8) Earbud calling mic hole

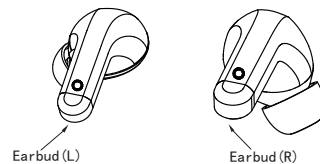
Earbuds Indicator and Prompt

No	Status	Operation	Prompt
1	Power on	Open the charging case or long touch the earbuds for 2 seconds.	Power on
2	Power off	Put the earbuds into the case and close the cover.	Power off
3	Enter TWS pairing mode	Open the charging case and do not pick up the earbuds, long press the button of charging case for 10 seconds to reset.	Du
4	TWS Pairing	Open the charging case or long touch the earbuds for 2 seconds to power on, the earbuds will automatically connect with each other.	/
5	Connecting with phone	After TWS pairing successfully, using mobile to search "BS346FN".	Pairing
6	Connected successfully	Using mobile to search "BS346FN" and select from Bluetooth list.	Connected
7	Low battery alarm	When the battery less than 20%, there will be a low battery alarm.	Low battery
8	Reset	Open the charging case and do not pick up the earbuds, long press the button of charging case for 10 seconds to reset.	/
9	Charging	Put the earbuds into the case and close the cover.	/

Charging Case Indicator

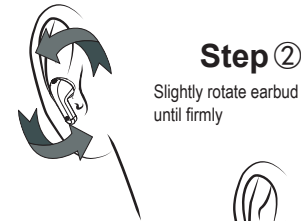
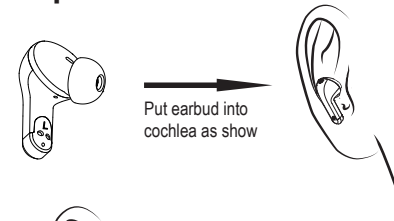
No	Status	Indicator Light
1	Charging	When charging the base, the indicator light keeps on red, and then will keep on green after fully charged.
2	Battery indication	The indicator off when charging case less than 5% battery. 5-20%: the light quickly flashes red. 20%-50%: the light keeps on red. 50%-80%: the light keeps on orange. > 80%: the light keeps on green.
3	Earbuds checking	The indicator off when charging case less than 5% battery. 20%-50%: the light keeps on red. 50%-80%: the light keeps on orange. > 80%: the light keeps on green.

Wear earbud (R)/(L) respectively



How To Wear

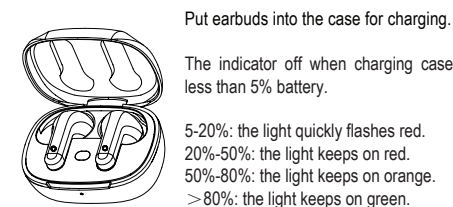
Step ①



Step ③

Put the earbud to cochlear edge tightly

How To Charge Earbuds



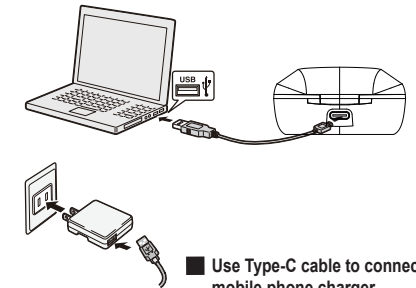
Notice: When charging case in 5-20% battery, the case needs to be charged, and will not charge the earbuds.

Put earbud(L and R) to the corresponding position in the charging case.

How to Charge Charging Case

Use the Type-C cable for charging.
When charging to the base, the indicator light keeps on red, and then will keep on green after fully charged.

■ Use Type-C cable to connect with computer



■ Use Type-C cable to connect with mobile phone charger

- Note 1: Check charging device whether it is suitable for your earbuds or not before charging.
Note 2: Use only the supplied charger to charge your earbuds. Other device may violate the validation or the maintenance article of this product and cause danger.
Note 3: Do not try to open the built-in battery as this will damage your earbuds.
Note 4: Earbuds will lose its power automatically if un-used. In this case, fully charge your earbuds every 3-6 months.
Note 5: Do not expose of your earbuds into fire or water.

Turning ON/OFF

1 Method

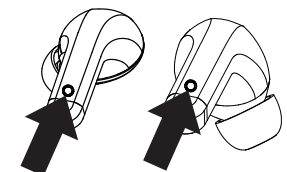
Turn on: Open the charging case cover to turn on. It's better to wait for 1 second before pick up earbuds for using.
Turn off: Put earbuds into the charging case and close the cover, the earbuds will turn off automatically 3 seconds later.

Note: Please do not open and close the cover too frequently.



2 Method

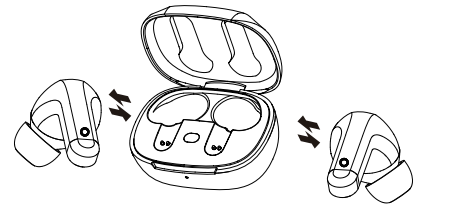
Turn on: Touch earbuds for 2 seconds.
Turn off: Disconnect with bluetooth device for 5 minutes, the earbuds will turn off automatically.



TWS Pairing

1 TWS Pairing

- 1. Long touch the panel for 2 seconds to turn on, the earbuds will enter auto-pairing mode, waiting for a few seconds, the two earbuds will pair automatically, then use mobile to search .
- 2. Open the charging case cover, the earbuds in case will enter auto-pairing mode, waiting for a few seconds, the two earbuds will pair automatically, then use mobile to search.



2 Pairing with Mobile

- 1. After TWS pairs successfully and connected with the mobile, the earbuds prompt "connected".
 - 2. When the earbuds disconnects with the mobile, the earbuds prompt "Disconnected", and the master earbud enters pairing mode.
- If the earbuds don't connect with mobile within 5 minutes, they will turn off automatically.



Do as the above ways:

Using the mobile to search "BS346FN" and select it from Bluetooth list (Please refer to the bluetooth device user manual). After connected with Bluetooth device, the earbuds will prompt "connected".

TWS Reconnected

- Method 1: Touch the earbud(R/L) for 2 seconds to power on→ wait for a few seconds, the two earbuds will connect automatically→ the earbuds will connect with the mobile phone that has ever paired after a few seconds → reconnected successfully.
- Method 2: Open the charging case to power on→ wait for a few seconds, the two earbuds will connect automatically→ the earbud will pair with the mobile phone that has ever paired after a few seconds → reconnected successfully.

Single Pairing Mode by Manual

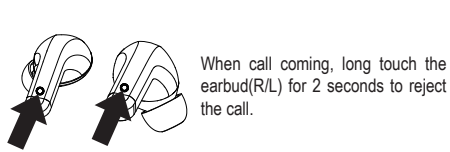
- 1. If without pairing record, double tap the panel after turning on, the earbuds will enter into pairing mode, and keep for 1 minute.
- 2. If TWS has pairing record, please turn off the bluetooth function of connected devices firstly. The earbud will immediately enter into pairing mode and keep for 1 minute. (During pairing mode, if turn on the other earbud, they will connect.)

Answer / End a Call

When call coming, double tap the earbud(R/L) to answer the call. In phone calling mode, double tap the earbud(R/L) to end the call.



Reject a call



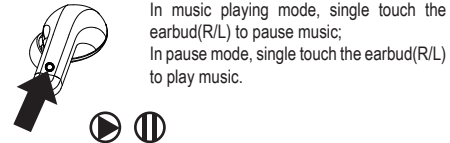
When call coming, long touch the earbud(R/L) for 2 seconds to reject the call.

Two-call Handling

- When you are answering a call, there is another call coming :
- 1. Long touch the earbud(R/L) for 2 seconds to end the current call and answer the incoming call;
 - 2. Double tap the earbud(R/L) to hold the current call and answer the incoming call;
 - 3. After the second implementation, double tap the earbud(R/L) to switch between two calls;
 - 4. After the second implementation, long touch the earbud(R/L) for 2 seconds to end the current call, and double tap the earbud(R/L) to end the other call.

Note:
To use the above functions, the mobile must support the Bluetooth hands free profile V1.5 and the mobile holding function (Network services from telecom) from has been started.

Music Playing/Pause



In music playing mode, single touch the earbud(R/L) to pause music; In pause mode, single touch the earbud(R/L) to play music.

Voice Assistant

In connection mode, triple tap the earbud(L) to activate voice assistance, then triple tap the earbud(L) to exit.

ANC / Transparency Mode Switch

In Power ON Mode, long touch the earbud(R/L) for 2 seconds to switch normal / transparency / ANC mode. In ANC mode, R&L prompts "ANC on", in transparency mode, R&L prompts "Transparency on", in normal mode, R&L prompts "All off".

Gaming Mode

In Power ON Mode, triple tap the earbud(R) to enter gaming mode, R&L prompts "Gaming mode on", then triple tap the earbud(R) to exit gaming mode, R&L prompts "Gaming mode off".

Next / Previous Track

When in playing music mode, double tap the earbud(R) for next song. Double tap the earbud(L) for previous song.

Reset

Put the earbuds in the charging case, open the charging case cover and long press the reset button for 10 seconds, the charging case indicator flashes blue for 10 seconds quickly. Waiting until the indicator light turns off.

Maintenance

Do not use abrasive cleaning solvents to clean your earbuds. Prevent your earbuds from touching any sharp objects. Keep your earbuds away from high-temperature, humidity and dust.

Trouble Shooting

Trouble	Reasons	Solutions
The earbuds fail to reconnect / earbuds noisy, can not operate	The earbuds broken down	Put the earbuds into the charging case and close the cover for 20 seconds to let earbuds resume normal
Unable to turn on by opening charging case cover or touching earbuds area	Without enough battery capacity in the charging case or earbuds	Charge the earbuds and case at same time for 1-2 hours, to ensure that the product has power
No sounds after pairing	Pairing failure or pairing overtime	Reset the earbuds and repairing
TWS paired, but can not search in mobile	The earbuds has too many pairing records	Reset the earbuds and repairing
The charging case has no indication after the earbuds are put inside	Without enough battery capacity in charging case / earbuds metal pin poor contact	Charge the case for about 1-2 hours/check whether the earbuds are put in position or the dirty metal pin leads to poor contact
One earbud no sound after connect with mobile	The earbud fails to connect with mobile	Reset the earbuds and repairing
Turn off automatically	Low battery	Charge the earbuds for 1-2 hours
Earbud echo	Volume is too loud or environment is noisy	Adjust volume on phone or change a place
Noise in call	Environmental interference or out of working range	Change place or go back to working range
Low voice of the calling party	Wrong Wearing	Follow wearing instructions
The charging case flashes blue every 1 second	Earbuds metal pins might be dirty, leading to short and over current, activating over-current protection	Clean the earbuds metal pin, put the earbuds back to the charging case, close and open the top cover, earbuds will resume normal
Earbuds single / double / triple touch failure	Time of double / triple touch is too long or touching operation failure	Double / Triple touching should be finished within 700ms. Put the earbuds to the charging case to wake up if touching operation failure
The earbuds fluzzing when touch the area	Block the mic hole during touch	Resume normal after put hands down
Without obvious ANC effect	Earmuffs sealing not good	Adjust to correct wearing position or replace with suitable earmuffs size, to ensure the earmuffs fit for wearing

NOTE:
This equipment has been tested and found to comply with the limits for a Class B digital device, pursuant to part 15 of the FCC Rules. These limits are designed to provide reasonable protection against harmful interference in a residential installation. This equipment generates uses and can radiate radio frequency energy and, if not installed and used in accordance with the instructions, may cause harmful interference to radio communications. However, there is no guarantee that interference will not occur in a particular installation. If this equipment does cause harmful interference to radio or television reception, which can be determined by turning the equipment off and on, the user is encouraged to try to correct the interference by one or more of the following measures:

- Reorient or relocate the receiving antenna.
- Increase the separation between the equipment and receiver.
- Connect the equipment into an outlet on a circuit different from that to which the receiver is connected.
- Consult the dealer or an experienced radio/TV technician for help

Changes or modifications not expressly approved by the party responsible for compliance could void the user's authority to operate the equipment.

This device complies with Part 15 of the FCC Rules. Operation is subject to the following two conditions:
(1) this device may not cause harmful interference, and
(2) this device must accept any interference received, including interference that may cause undesired operation.