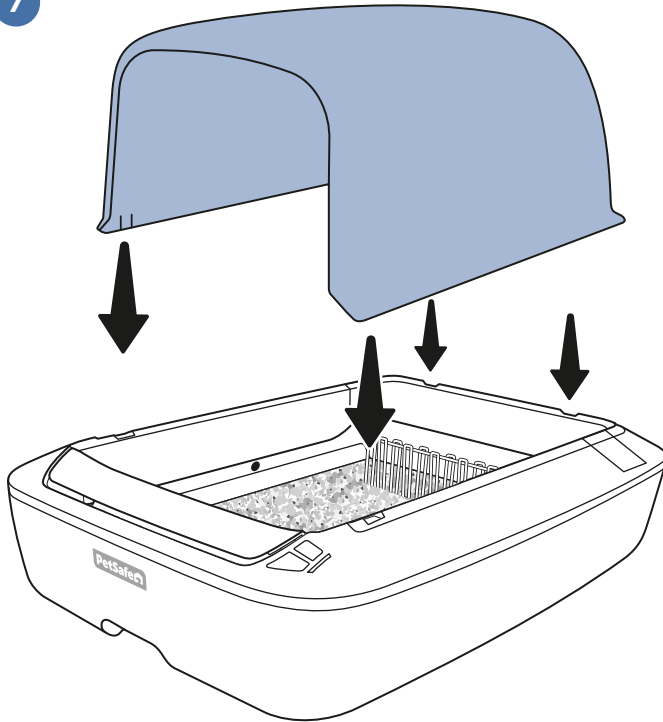


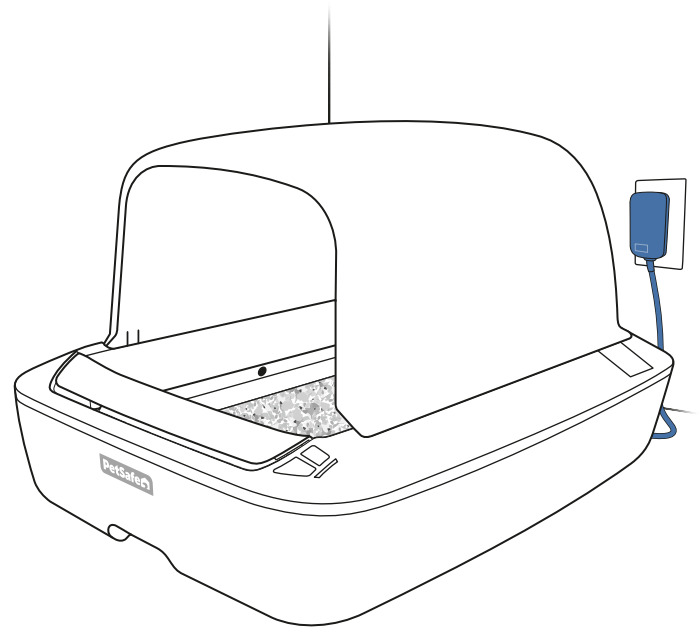
7



Place the privacy cover on top of the litter box, inserting the tabs at the bottom of the privacy cover into the notches on the top edge of the litter box.

If your cat has not used a covered litter box before, it may help to leave the litter box uncovered until your cat is comfortable using it.

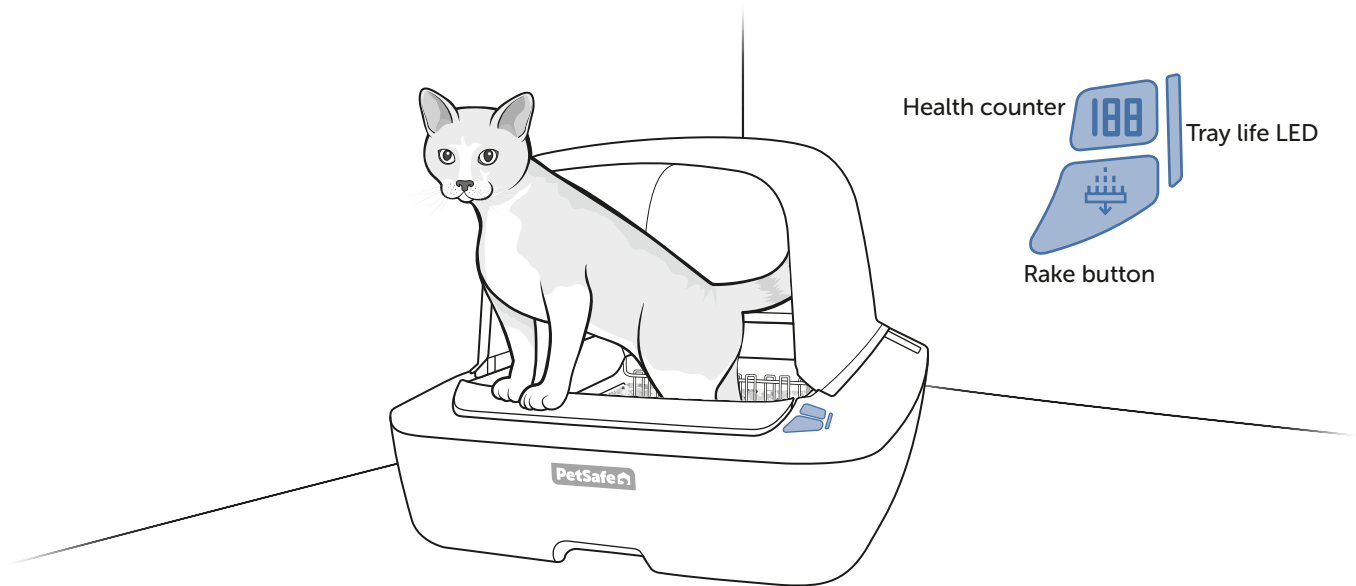
8



Plug the power adaptor into the electrical outlet.

Important: If you have a kitten, leave the litter box unplugged until she is at least 6 months old.


The litter box will power on.



Your new litter box is ready to use. Here's how it works:

- Sensors inside the litter box recognize when your cat is present. When your cat leaves the litter box, the rake button will blink blue and the rake timer will start a 20-minute countdown.
- When the countdown is complete, the rake will move any solid waste into the waste trap. (The crystal litter will absorb any liquid waste.)
- If your cat returns to the litter box during the countdown, the rake timer will stop. The rake timer will reset when your cat leaves the litter box again.
- Each time the rake activates, the health counter will increase by one. Monitoring this health counter can help you identify changes in your cat's digestive or urinary health. The health counter will reset automatically each time you change the litter tray.
- To activate the rake manually at any time, press the rake button. To pause the rake while it is in motion, press the rake button again.

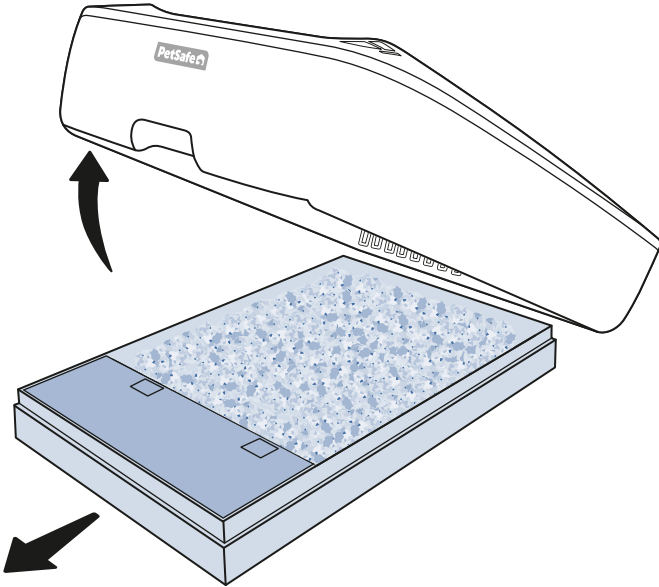
The tray life LED and rake button light up to indicate litter box status:

Indicator	Light color	Meaning
Tray life LED	Blue, solid	The litter tray is validated and has been in use for fewer than 50 rake cycles.
	Yellow, solid	The litter tray has been in use for 50 or more rake cycles.
	Red, fast blinking	The litter tray is invalid or has been in use for 100 or more rake cycles. Replace with an authentic PetSafe® Crystal Litter Tray.
 Rake button	Blue, fast blinking	The rake is paused. This happens if you press the rake button while the rake is in motion. To resume the rake cycle, press the rake button.
	Blue, slow blinking	The rake timer is counting down, or raking is currently in progress.
	Blue, solid	The litter box has power and is functioning normally.
	Yellow, fast blinking	A sensor was blocked during the rake cycle. Clear any obstructions near the rake and clean the sensors, then press the rake button. The rake should finish the cycle and return to the home position.
	Red, solid	A mechanical error has occurred during the rake cycle, or a sensor has been blocked for 60 minutes or more. Clear any obstructions near the rake and clean the sensors, then press the rake button. The rake should finish the cycle and return to the home position. If the error persists, please contact Customer Care for assistance.

Change the crystal litter tray

You can expect a litter tray to last 20-30 days for one cat, 10-15 days for two cats, and 7-10 days for three or more cats. When it's time for a change:

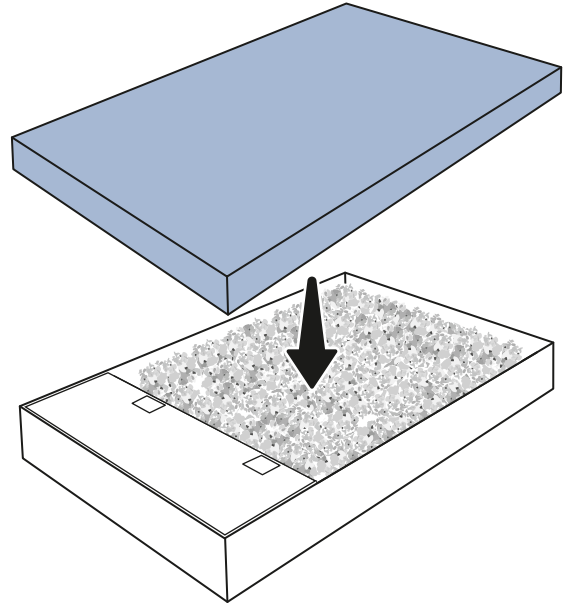
1



Lift the front of the litter box and remove the used litter tray.

Important: See the customer care guide for safety instructions related to cat litter waste and toxoplasmosis

2



Remove the lid from under the tray and use it to cover the tray for disposal. There's no need to touch the litter.

Remember to use only PetSafe® ScoopFree® products with your ScoopFree® litter box. PetSafe® ScoopFree® litter is specially designed to work with your PetSafe® ScoopFree® Crystal Pro Self-Cleaning Litter Box.