

Appendix 1 Photos



Photo 1. Mounted on breathing adaptor.



Photo 2. Detached for charging.

FCC ID: 2ATQX-AIROFIT

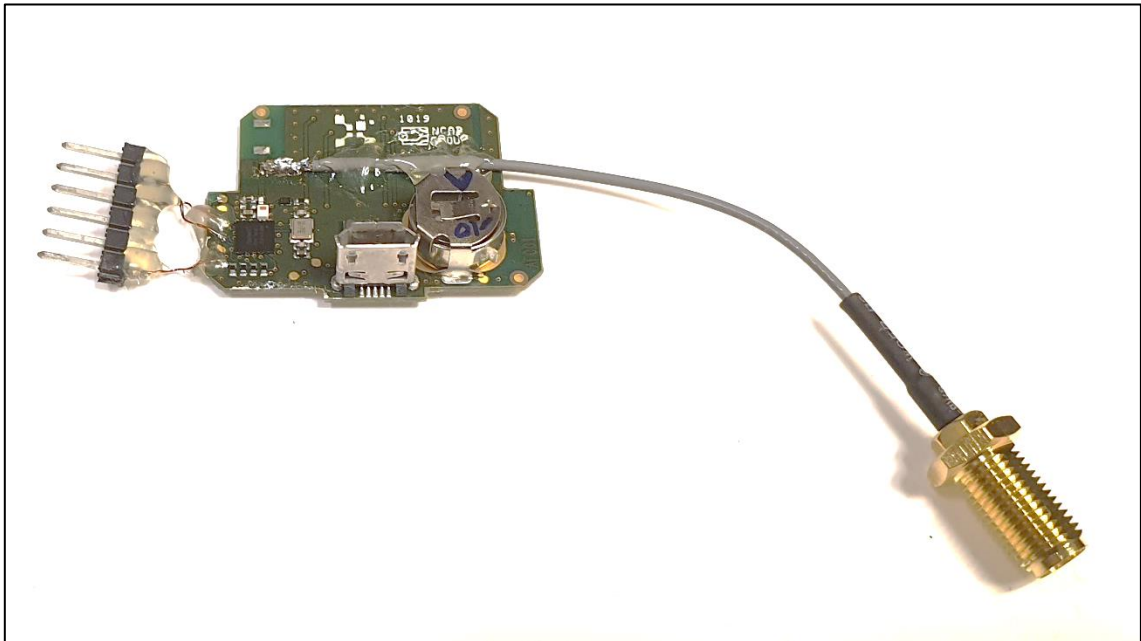
Date
2019-07-05Reference
P19-0094-1Page
2 (8)
Appendix 1

Photo 3. Printed circuit board (top side) with temporary antenna connector.

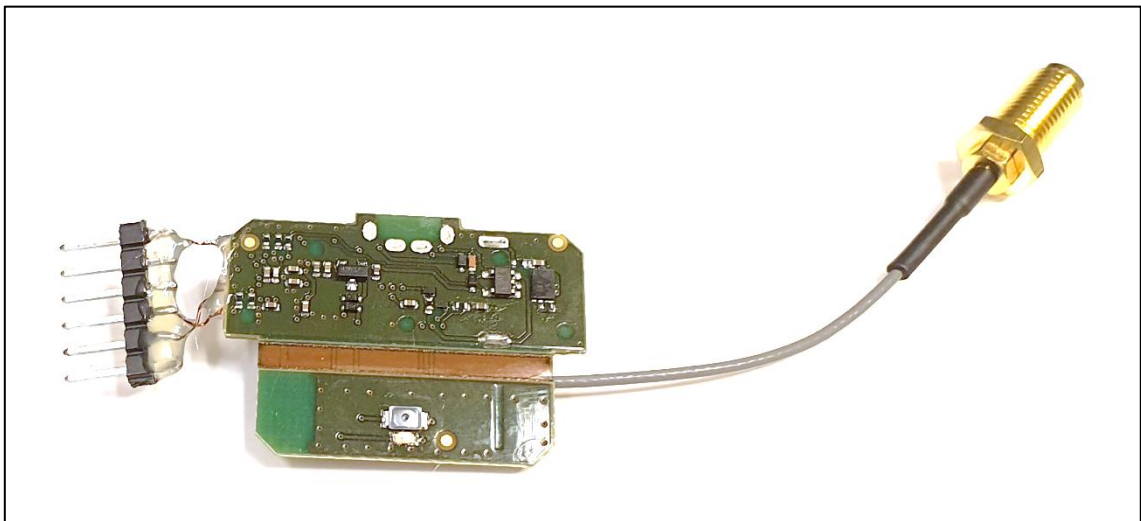


Photo 4. Printed circuit board (bottom side) with temporary antenna connector.



Photo 5. Typical ACDC adaptor.

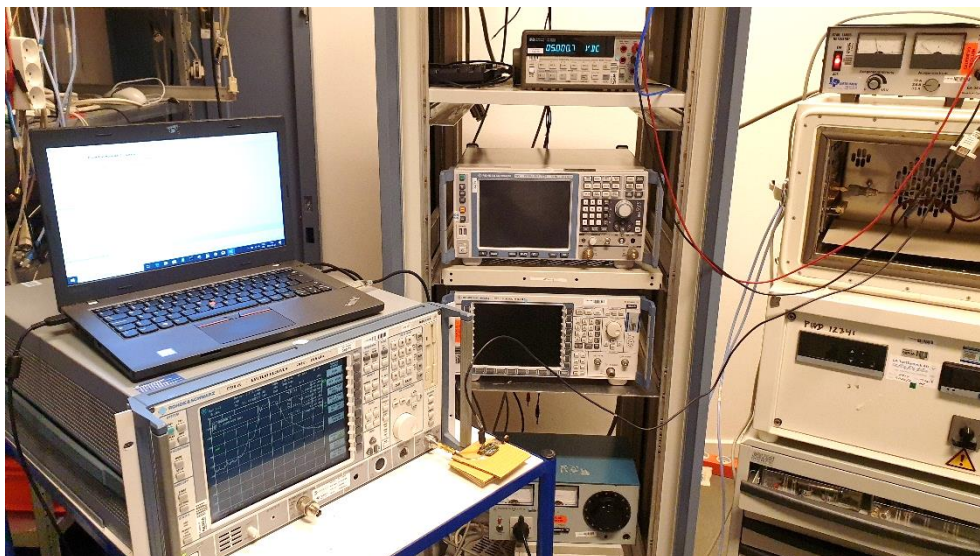


Photo 6. Conducted measurements test set up.

FCC ID: 2ATQX-AIROFIT

Date
2019-07-05Reference
P19-0094-1Page
4 (8)
Appendix 1

Photo 7 - Radiated emission test setup for 30 - 1000 MHz.



Photo 8 - Radiated emission test setup for 1 - 14 GHz.



Photo 9. Radiated emission test setup for 14 - 25 GHz.

FCC ID: 2ATQX-AIROFIT

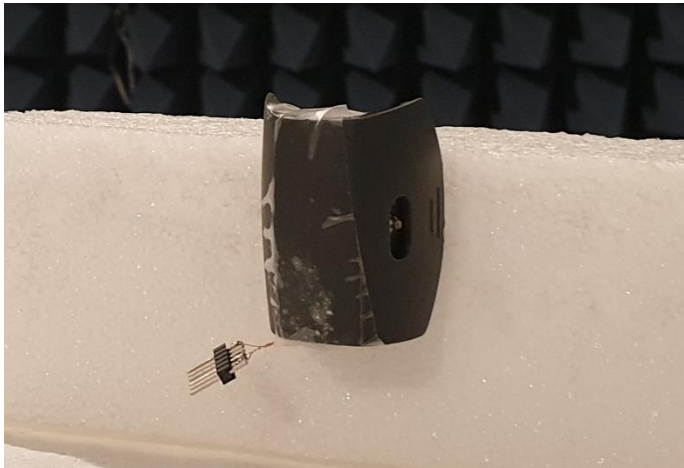
Date
2019-07-05Reference
P19-0094-1Page
5 (8)
Appendix 1

Photo 10. Vertical orientation.

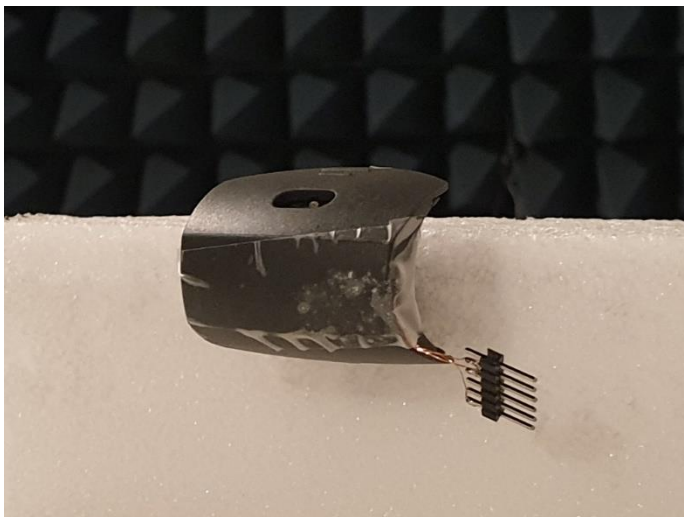


Photo 11. Horizontal orientation.



Photo 12. Horizontal – 90 deg. orientation.

FCC ID: 2ATQX-AIROFIT

Date
2019-07-05Reference
P19-0094-1Page
6 (8)
Appendix 1

Photo 13. AC Conducted emission test set up. Powered by AC/DC adaptor.