

User Manual



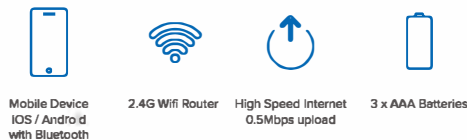
Powered by
tuya

What's in the Box



* Batteries may not be included, depending on country of sale

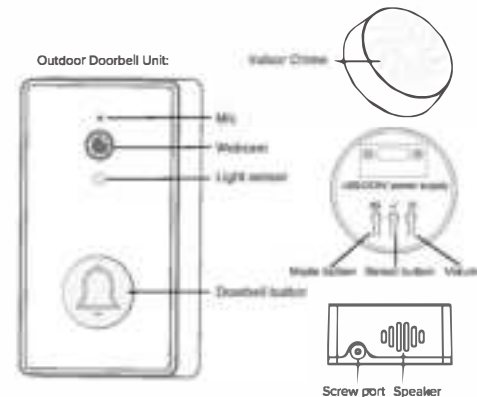
What you need to get started



Product Features

1. When a visitor presses the doorbell button, your mobile device will receive a doorbell notification on the APP. When you answer, your phone will be able to see and speak with the person standing in front of the doorbell.
The indoor chime placed inside the house will also sound at the same time to alert you, just like with any doorbell.

2. You will also receive low battery notifications on your mobile device, reminding you to keep your doorbell powered at all times.



1. Getting the doorbell ready to connect

Once batteries are installed into the doorbell, press the doorbell button to power on the device.

Once the device is powered on, it will automatically enter into connection mode and sound an audio prompt.

For connection status, listen for the audio prompts.

Notes:

If the process of connecting the doorbell to wifi does not start within 90 seconds, the device will go into standby mode. Press the doorbell button again to wake the device.

To hard reset the device and restore it to factory settings, press and hold the doorbell button for 15 seconds.

2. Pairing the Indoor Chime

1. Indoor Chime is to be connected with a power supply.
2. Turn on the doorbell and press the doorbell button to turn it on.
3. Confirm that the doorbell is turned on, and then press and hold the Ding dong mode button for about 3 seconds to hear the 'ding-dong' prompt tone, indicating that the chime is paired successfully with the doorbell.

Precautions:

1. During the pairing process, the doorbell and chime should be as close as possible.
2. Make sure the doorbell is fully charged.
3. There will be a 'ding dong' sound prompt when pairing is successful.
4. If no sound prompt is heard, the pairing failed. It needs to be paired again by repeating the same process.

3. Download and Install APP

3.1 Using your mobile device camera, scan the QR code on the reverse of the doorbell to install the app that will connect with your doorbell. It is located at the back of the doorbell, revealed after removing the back cover.

Instructions on releasing the mounting plate are detailed in the 'Installation' section of this User Manual.

3.2 Make sure to insert the batteries into the camera to power it ON.

4. Get The Mobile Device Ready

4.1 Enable Bluetooth on the mobile device.

4.2. In Settings, Allow the App to access Bluetooth Connections



5. User Registration

Open the app on mobile device

5.1. Click on Register and follow the steps until your account is created.

Supports email and cell phone number registration



6. Add Doorbell (BLE Smart Camera)

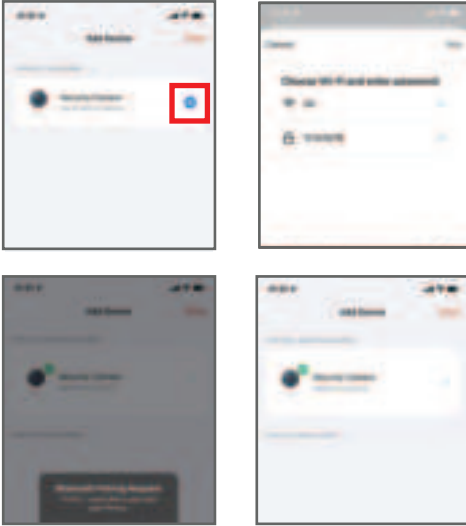
- 6.1. Select 'Add Device'
- 6.2 Select 'Smart Camera (BLE)'

Notes:

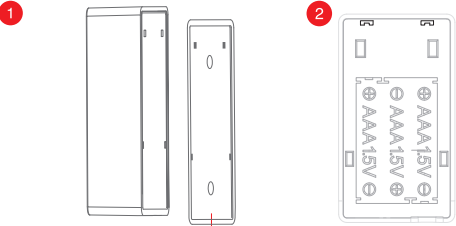
- 1. This product supports 2.4GHz WiFi band, the 5GHz wireless band is not supported.
- 2. WiFi password should not contain ~!@#\$%^&*() or other special characters.
- 3. Make sure the Bluetooth on the mobile device is turned ON.
- 4. Keep your mobile devices and doorbell within 10ft (3meter) range to the router during setup, which will speed up the configuration time.



- 6.3 Press the + button next to the Security Camera Icon to setup Wi-Fi.
- 6.4 Enter the "Wi-Fi Password" and click the "Next" button to connect.
- 6.5 Allow the Bluetooth Pairing Request.
- 6.6 Connection successful

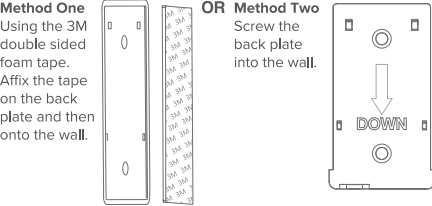


Installation

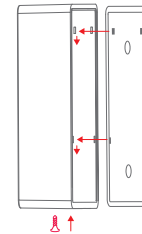


Hold the Video Doorbell firmly in one hand. Using your other hand, pull down the back plate to release it from the doorbell and reveal the battery compartment.

- 3 Secure the back plate to the wall, in position where the doorbell will be placed, using either one of these methods.



- 4 Attach the doorbell camera unit onto the back panel by aligning the notches and then sliding the doorbell downwards.



- 5 Screw in one small screw into the screw port on the underside of the doorbell to prevent theft of the doorbell.



SPECIFICATION

Resolution	SD
Lens	80° Wide-Angle
IR Nightvision	4 pieces 850mm
Nightvision	Automatic switching
Connectivity	WIFI 2.4GHz Bluetooth
Audio	Two-way Voice, Intercom
Client Interface	Mobile App - Tuya
Doorbell Power Chime Power	3 AAA dry batteries USB 5V DC
Size	87mm*58mm*108mm
Weight	0.185kg
Working Temperature	-4°F ~ 140°F (-20°C ~+ 60°C)
Working Humidity	10%~65% RH

Warning: Changes or modifications to this unit not expressly approved by the party responsible for compliance could void the user's authority to operate the equipment.

NOTE: This device complies with part 15 of the FCC Rules. Operation is subject to the following two conditions: (1) This device may not cause harmful interference, and (2) this device must accept any interference received, including interference that may cause undesired operation.

FCC Statement: This equipment has been tested and found to comply with the limits for a Class B digital device, pursuant to part 15 of the FCC Rules. These limits are designed to provide reasonable protection against harmful interference in a residential installation. This equipment generates, uses and can radiate radio frequency energy and, if not installed and used in accordance with the instructions, may cause harmful interference to radio communications. However, there is no guarantee that interference will not occur in a particular installation. If this equipment does cause harmful interference to radio or television reception, which can be determined by turning the equipment off and on, the user is encouraged to try to correct the interference by one or more of the following measures:

- Reorient or relocate the receiving antenna.
- Increase the separation between the equipment and receiver.
- Connect the equipment into an outlet on a circuit different from that to which the receiver is connected.
- Consult the dealer or an experienced radio/TV technician for help.

The equipment complies with FCC Radiation exposure limit set forth for uncontrolled environment. This equipment should be installed and operated with minimum distance 20cm between the radiator and your body.