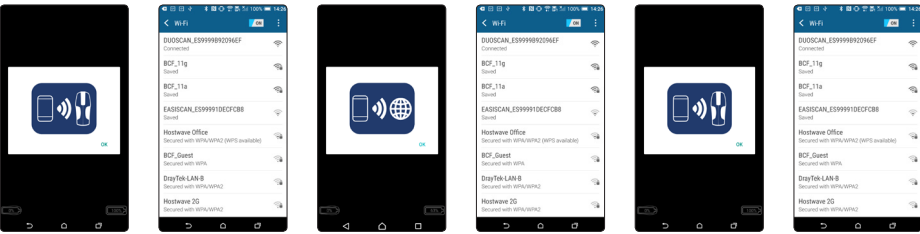


This quick guide outlines the primary user instructions for Duo-Scan:Go (DSGC01) and Duo-Scan:Go Plus (DSGC02)



First time use – activation

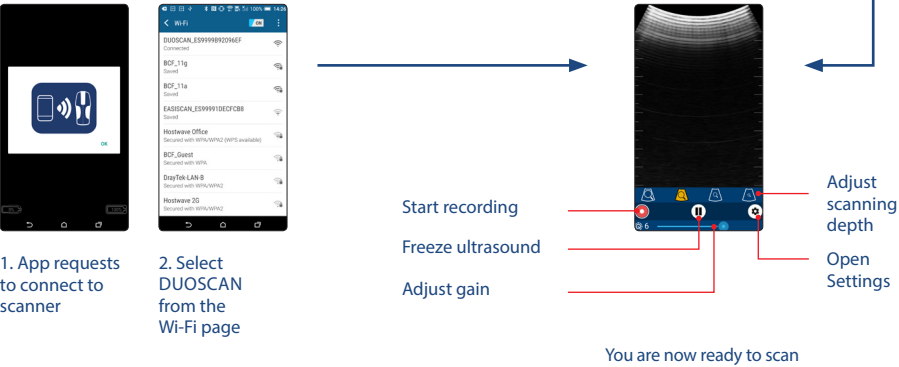
Press and hold the power button on the scanner until the blue LED switches on. Download the BCF Go Scan app from Google Play Store or the App Store. Once downloaded launch the app. To activate the scanner successfully you will need ensure your scanner is charged and that you have an internet connection.



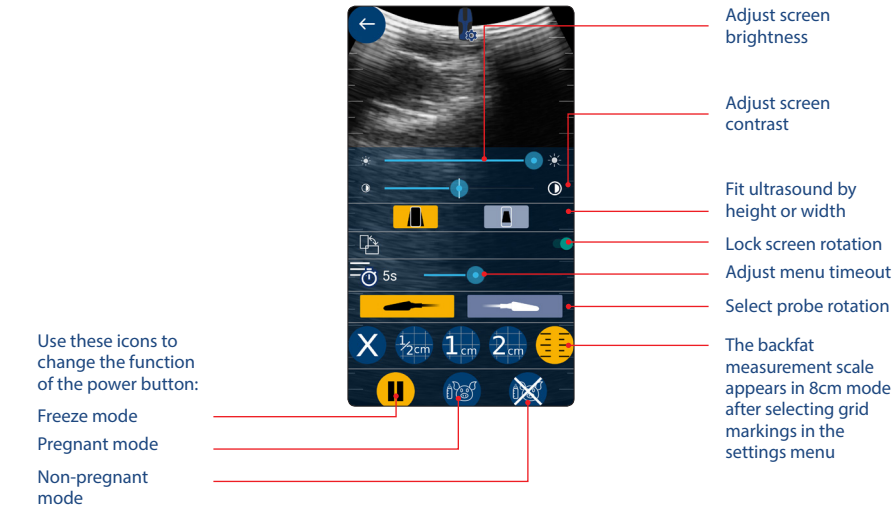
- 1. App requests to connect to scanner
Note – if the LED flashes on the scanner it is not connected to any smart device.
- 2. Select DUOSCAN from the Wi-Fi page
- 3. App requests to connect to the internet
- 4. Select your local Wi-Fi network to connect to the internet
- 5. App requests to connect back to the scanner
- 6. Select DUOSCAN from the Wi-Fi page

Normal start up process

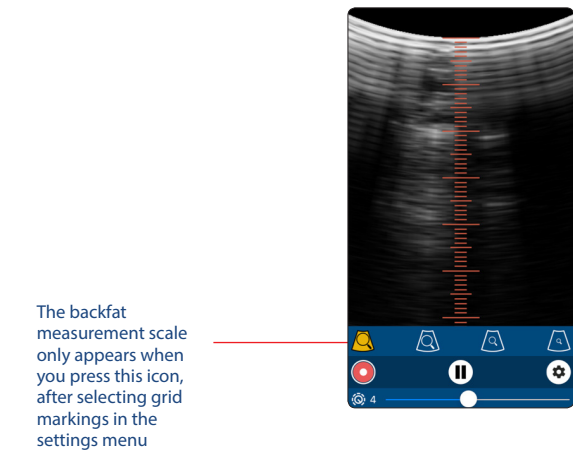
After a few seconds, the ultrasound image will appear. Touch anywhere on the screen to bring up the live scanning menu.



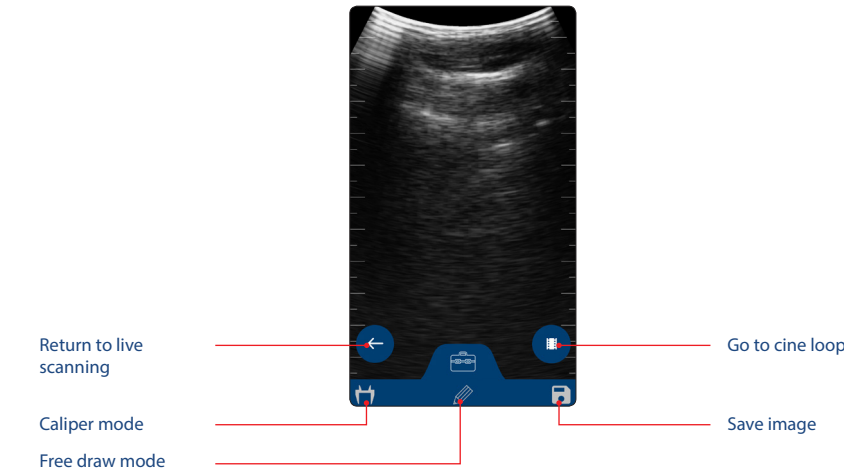
Settings menu



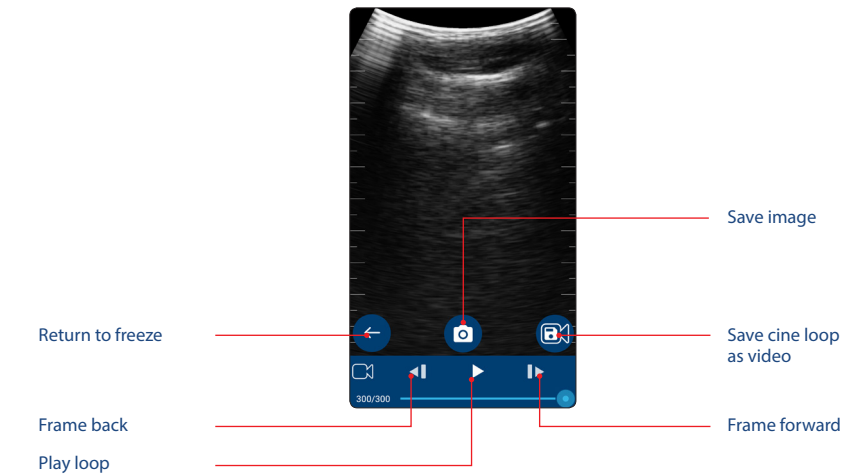
Backfat measurement function



Freeze menu



Cine loop menu



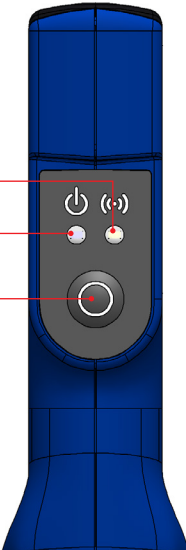
LED sequences

Wireless LED

Power LED

Multi-function power button:

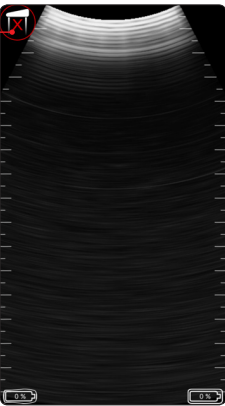
- Freeze/Unfreeze
- Pregnant mode
- Non-pregnant mode



Power LED	
Blue flashing	Scanner turning on
Blue	Scanner on and battery between 66–100% charge
Yellow	Scanner on and battery between 33–66% charge
Yellow flashing	Scanner on and battery between 0–33% charge
Wireless LED	
Blue flashing	Scanner ready for smart device to connect, nothing connected
Blue	Smart device connected
Blue	Scanner is charging when placed on wireless charging plate
Both LEDs	
Flashing yellow	Software updating

Power saving mode

The probe has no contact



Freeze mode

This function allows you to freeze a live ultrasound image. It will also allow you to review the previous 10 secs of scanning through the app's cine loop functionality. This is good if your sow has run off! All images and clips can be saved in the app by pressing the save icon.

Pregnant mode

When in pregnant mode, short pressing the power button will increment the pregnant count. This allows the number of pregnant sows to be easily recorded.

Non-pregnant mode

When in non pregnant mode, short pressing the power button will increment the non-pregnant count. This allows the number of non-pregnant sows to be easily recorded.

Saved images

All images and video clips are stored in the smart device's photo and video gallery.

Care & maintenance

We have built the Duo-Scan:Go to be rugged and water resistant. It does however contain fragile sensitive electronics.

Cleaning instructions

Duo-Scan:Go should be cleaned with a damp cloth. It will not withstand powerful jets of water (e.g. tap full on or hosing it down).

Charging

The scanner is charged via a wireless induction plate. To charge the scanner place it on the plate, with the charging symbol facing down. The scanner should be charged in a cool environment, ideally around 20 °C. When the LED turns off the charger is fully charged. Duo-Scan:Go is compatible with all WPC Qi-v1.2 compliant wireless chargers and has been certified using chargers with an output up to 5V/1A.

Specification

Size: 235 mm x 50 mm x 70 mm

Weight: 246 grams

Connection: Sound-Link™

Power: Rechargeable lithium battery

Operating temperature: -20 °C to 35 °C

Charging temperature: 0°C to 35°C

Battery life: 2 hours approx

Certification

Duo-Scan:Go is compliant with all CE requirements. It is RoHS and WEEE compliant.

Note: All BCF Technology products are for animal applications only. The product shall not be used outside its scope, as declared by the manufacturer.

FCC – This device complies with part 15 of the FCC Rules. Operation is subject to the following two conditions: (1) This device may not cause harmful interference, and (2) this device must accept any interference received, including interference that may cause undesired operation.

If the user changes any modifications not expressly approved by the party responsible for compliance could void the user's authority to operate the equipment. All Duo-Scan: Go parts must be serviced by BCF only. There are no user serviceable parts.

Need more help?

Please visit our website bcfshop.com for video manuals and FAQs.

Contact our customer care team:

UK +44 (0)1506 460 023

North America + 1 (507) 529 8200

Head office:
BCF Technology Ltd
Imaging House
Phoenix Crescent
Bellshill
ML4 3NJ
Scotland, UK

