

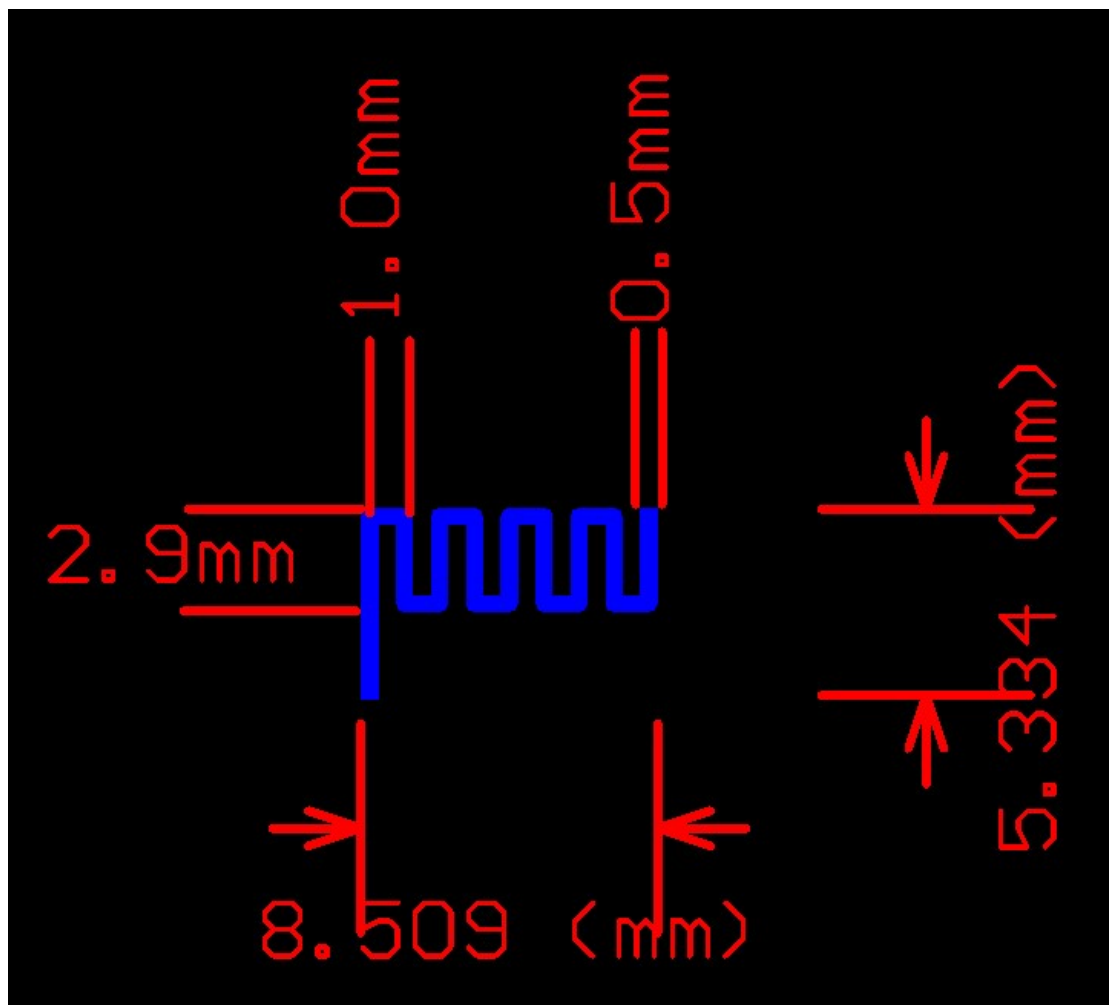
Tested Products

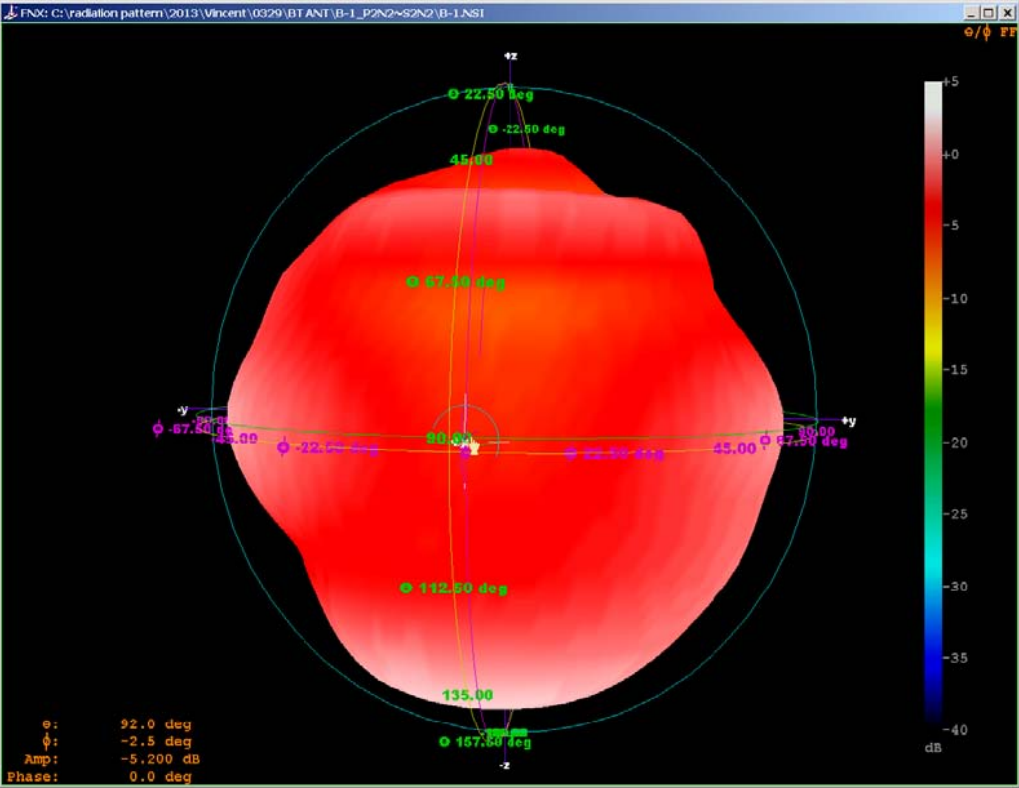
Antenna 1:PCB antenna

- Frequency = 2.400GHz.
- Frequency = 2.450GHz.
- Frequency = 2.500GHz.

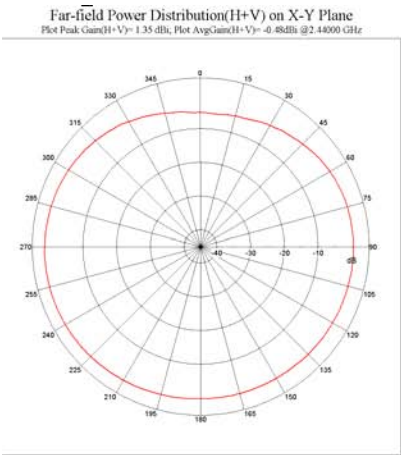
Product: ANTENNA 2.4GHz

ITEM	SPEC.
Model Name	ANT-301
Center Frequency	2400 MHz 0 dbi 2450 MHz -0.57 dbi 2500 MHz -1.04 dbi
MAX. GAIN	0dbi
Polarization	Linear, Vertical
Azimuth Beam Pattern	Omni-directional
Impedance	50Ω
Antenna Length	8.5mm

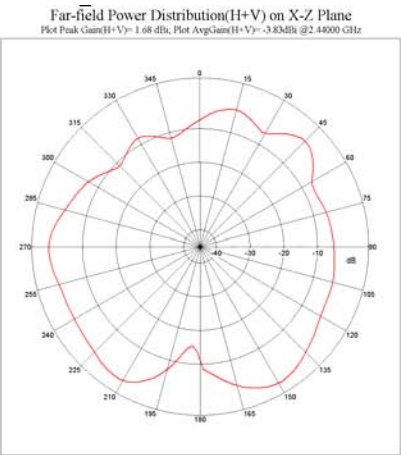




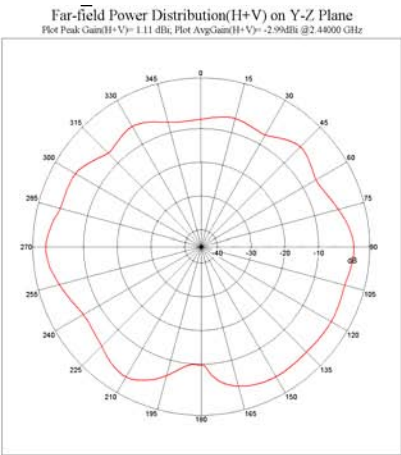
3D radiation pattern diagram



XY-plane



XZ-plane



YZ-plane