

Accept a Bluetooth partnership

1. Ensure that Bluetooth is turned on and that your phone is discoverable.
2. When prompted to accept a Bluetooth partnership with the other device, click **Yes**.
3. In PIN, enter a personal identification number (PIN) between 1 and 16 characters, and click **Done**. You must enter the same PIN that was entered on the device requesting the Bluetooth partnership.

The Bluetooth partnership is created. You can now exchange information with the other device.

See also

[Turn Bluetooth on and off](#)

[Make your device discoverable](#)

Create a Bluetooth partnership

Ensure that the two devices are within close range and that both Bluetooth-enabled devices are discoverable.

1. On the Home screen, click **Start > Settings > Connections > Bluetooth**.
2. Click **Menu > Devices > Menu > New**. Your phone searches for other Bluetooth-enabled devices and displays them in the list.
3. Select the device with which you want to create a Bluetooth partnership, and click **Add**.
4. In **Passkey**, if you want to use a passkey (recommended for enhanced security), enter a alphanumeric passkey between 1 and 16 characters, and click **Done**. Otherwise, leave the passkey blank, and click **Done**.
5. Enter the same passkey on the other device.

Tip

Once you create a partnership, the Bluetooth-enabled devices don't need to be discoverable to beam information between them; Bluetooth needs only to be turned on.

See also

[Make your device discoverable](#)

End a Bluetooth partnership

1. On the Home screen, click **Start > Settings > Connections > Bluetooth**.
2. Click **Menu > Devices**.
3. Select the Bluetooth partnership you want to end.
4. Click **Menu > Delete**.

See also

[Make your device discoverable](#)

[Turn Bluetooth on and off](#)

[Create a Bluetooth partnership](#)

Make your device discoverable

To receive beamed information, beaming devices or computers must be able to detect your device.

1. On the Home screen, click **Start > Settings**.
2. Click **Connections > Bluetooth**.
3. Select **Discoverable**, and click **Done**.

Other Bluetooth-enabled devices can now detect your phone and attempt to beam information to it, establish a Bluetooth partnership, or use a Bluetooth service.

Notes

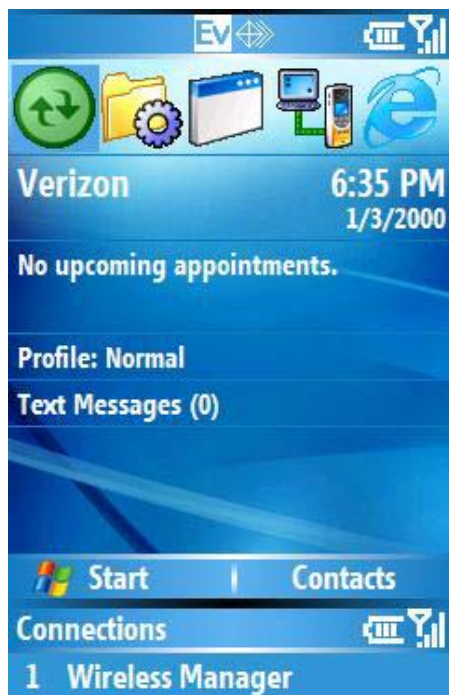
Selecting **Discoverable** also turns on Bluetooth.

Turning off Bluetooth will make your device not discoverable, and it will also prevent you from sending a Bluetooth beam.

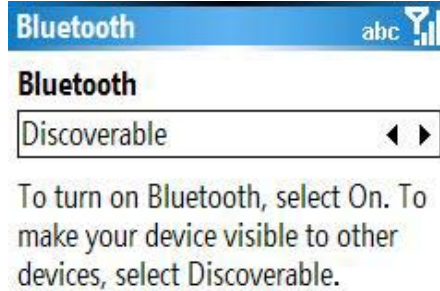
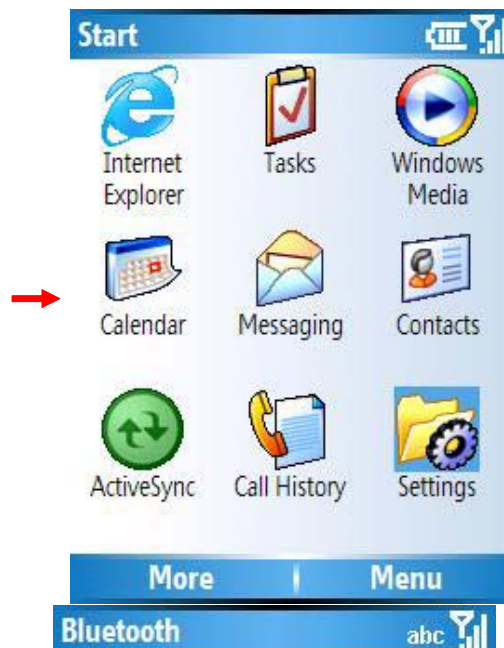
See also

[End a Bluetooth partnership](#)

[Create a Bluetooth partnership](#)



<Home screen>
<Connections-> Bluetooth>



<Settings>
<Discoverable -> Done>



<BT discoverable On>

Rename a Bluetooth partnership

You can give a more meaningful name to a Bluetooth partnership to help you recognize it when selecting from a list of partnerships.

1. On the Home screen, click **Start** > **Settings** > **Connections** > **Bluetooth**.
2. Click **Menu** > **Devices**.
3. Select the Bluetooth partnership to rename.
4. Click **Menu** > **Rename**.
5. In **Name**, enter a new name for the Bluetooth partnership, and click **Done**.

See also

[Make your device discoverable](#)

[Turn Bluetooth on and off](#)

[End a Bluetooth partnership](#)

[Create a Bluetooth partnership](#)

Turn Bluetooth on and off

By default Bluetooth is turned off. If you turn it on, and then turn off your device, Bluetooth also turns off. When you turn on your device again, Bluetooth turns on automatically.

1. On the Home screen, click **Start > Settings > Connections > Bluetooth**.
2. Select **On** or **Off**, and click **Done**.

Note

You can also turn off Bluetooth using Wireless Manager.

See also

[Make your device discoverable](#)

[End a Bluetooth partnership](#)

[Create a Bluetooth partnership](#)

[Turn wireless power on or off](#)

Receive beamed information

1. On the Home screen, click **Start > Settings**.
2. Click **Connections > Beam**.
3. Select **Receive incoming beams**.
4. Do one of the following:
 - To receive beams by using Bluetooth, ensure Bluetooth is turned on and that your phone is discoverable and within close range.
5. Click **Yes**.

Notes

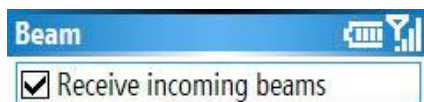
Once you select **Receive incoming beams**, your phone automatically receives beams until you clear this check box.

Your phone can receive all types of beamed files, but you may not be able to view all types of files on the phone. You may need to copy some files to a PC for viewing.

See also

[Turn Bluetooth on and off](#)

[Make your device discoverable](#)



Allows your phone to receive data beamed from other devices.



Receive incoming beams

Your phone receives all incoming beams from other devices until you clear this option.

1. On the Home screen, click **Start** > **Settings**.
2. Click **Connections** > **Beam**.
3. Select **Receive incoming beams**.
4. Click **Done**.

Beam an item

In the Calendar, Contacts, Notes, Tasks, and Pictures programs, you can beam files and information to other devices using Bluetooth or infrared.

1. From the program, select the item you want to beam, such as an appointment in Calendar, a task in Tasks, a contact card in Contacts, or a picture in Pictures. In Calendar, first open the appointment in Agenda view.
2. Click **Menu** > **Beam [type of item]**.
3. Do one of the following:
 - If using Bluetooth, select the device to which you want to send the item.
4. Click **Beam**.

Tip

When using Bluetooth, if the device that you want to beam to doesn't appear in the list, ensure that the device is turned on, discoverable, and within close range of your phone. Also, ensure that Bluetooth is turned on.

See also

[Make your device discoverable](#)

[Receive beamed information](#)



Set up a Bluetooth-enabled headset

You can use a Bluetooth-enabled headset (or other Bluetooth-enabled hands-free device) with your device when you create a Bluetooth partnership between your device and the Bluetooth headset.

1. Make sure that the two devices are turned on and within close range, and that the Bluetooth-enabled headset is discoverable.
2. On the Home screen, click **Start > Settings > Connections**.
3. Click **Bluetooth > Menu > Devices**.
4. Click **Menu > New**. Your device searches for other Bluetooth-enabled devices and displays them in the list.
5. Click the name of the Bluetooth-enabled, hands-free device, and click **Add**.
6. In **Passkey**, enter the alphanumeric passkey for the Bluetooth-enabled hands-free device. You can find this in the manufacturer's documentation for your hands-free device. Click **Next**.
7. Select the check box for the **Hands Free** service, and click **Finish**.

Bluetooth Devices



To search for a new device
select Menu and then New.



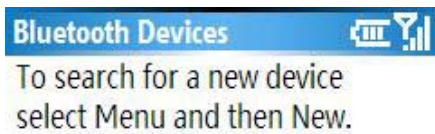
Set up a stereo headset

Windows Mobile-based devices support A2DP (Advanced Audio Distribution Profile), which is used by Bluetooth-enabled stereo headsets. Make sure that your stereo headset also supports A2DP.

1. Make sure that your device and the stereo headset are turned on, discoverable, and within close range.
2. On the Home screen, click **Start > Settings > Connections**.
3. Click **Bluetooth > Menu > Devices**.
4. Click **Menu > New**. Your device searches for other Bluetooth-enabled devices and displays them in the list.
5. Select the name of the stereo headset, and click **Add**.
6. In **Passkey**, enter the alphanumeric passkey for the Bluetooth-enabled stereo headset. You can find this in the manufacturer's documentation for your hands-free device. Click **Next**.
7. Select the check box for the **Hands Free** service, and click **Finish**.

Note

If the headset becomes disconnected, turn the headset on and repeat steps 1-4 above. Select the stereo headset and click **Menu > Set as Wireless Stereo**.



Turn wireless power on or off

You can turn the power off to your wireless connections in a single location. This is a quick way to preserve battery power or to prepare your device for an airplane flight.

1. Press **POWER** briefly to display the Quick List.
2. Click **Wireless Manager**.
3. Do one of the following:
 - Click the button for a desired wireless connection type (such as **Bluetooth** or **Phone**) to turn it off or on. If it is already turned off, the button is a lighter color and displays an icon marked with an X.
 - Click **All** to turn all wireless power on or off (available only when more than one wireless type exists on your device).

Note

To change settings for one of the displayed wireless connection types, click **Menu** and click the type of settings you want to change.
