

## Pop-up multifunctional socket

**Model No: E535US1U2WL**



**Manufacturer**

**eMoMo Tech Co., Ltd**

**Address: Yonghe Building, Taiwan Industrial Park, Shiyan Baoan, Shenzhen, Guangdong, China**

### Specification/Parameters

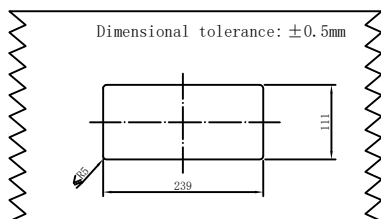
### Weight&Dimensions

AC Input	120V~/60Hz	Product Weight	935g
AC socket Output	1200W/10A Max	Product Dimensions	265 (L) x117 (W) x68 (H) mm
TYPE(A+C) Output	18W Max	Package Dimensions	278 (L) x 153 (W) x 112 (H) mm
Wireless Charging Power	5W/7.5W/10W	Installations Way	Installation Of Openings
Wireless charging implementation standard	Qi1.2.4	Size Of Mounting Hole	Panel Type: 239 (L) X111(W)±0.5mm      Software Type: 240 (L) X112(W)±0.5mm
Main Body Material	Aluminum Alloy		
Ambient Temperature	Ambient temperature: 0~+40℃ Ambient humidity: 20-90%	Installas convenience	Quick And Easy To Install
		Charging Effect	Charging Very Quickly
10W max quick charging		Quick and easy to install,very safe to use	
Quick-cooling graphite paster		Charging very quickly	

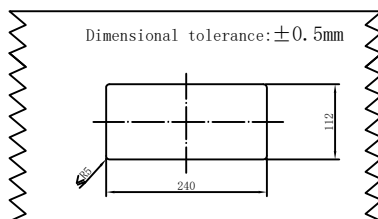
Prepare By:Shao Peng Wu    Audit:Johnson Jiang

Date:24/05,23

## 1 .Dimensions of mounting holes

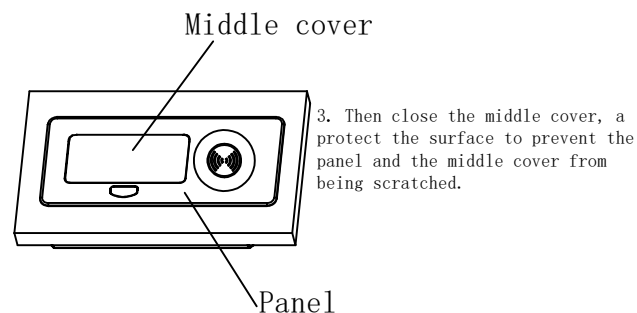
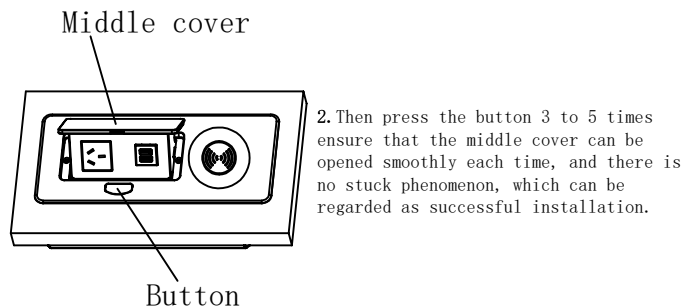
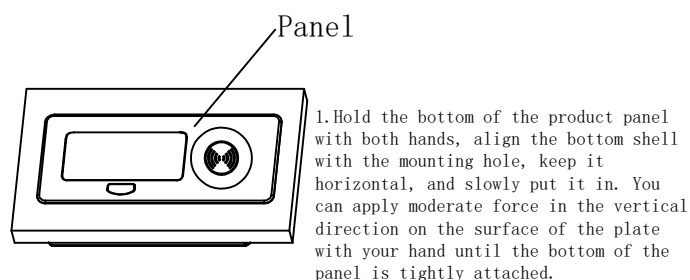


Hard material type mounting holes



Soft material type mounting holes

## 2 .Order of installation



## 3 .Caution

1. Before installation, clean the vicinity of the mounting hole to prevent foreign objects from obstructing installation.
2. When the middle cover is opened, do not exert too much force on the button.
3. When installing in soft materials, remove the sponge in the installation area and avoid turning the sponge into the installation hole. But the crust can be turned into the hole;
4. When the middle cover is closed, do not exert too much force, and reduce the impact on the key.
5. When the surface is dirty, do not use corrosive solution, can be dipped in a small amount of dishwashing detergent, cotton cloth wipe clean.
6. Risk of Electric Shock. Do not plug into another relocatable power tap, a FPDU or an extension cord.

## 3 .FCC WARNING

This device complies with part 15 of the FCC Rules. Operation is subject to the following two conditions: (1) this device may not cause harmful interference, and (2) this device must accept any interference received, including interference that may cause undesired operation.

Any changes or modifications not expressly approved by the party responsible for compliance could void the user's authority to operate the equipment.

NOTE: This equipment has been tested and found to comply with the limits for a Class B digital device, pursuant to Part 15 of the FCC Rules. These limits are designed to provide reasonable protection against harmful interference in a residential installation. This equipment generates, uses and can radiate radio frequency energy and, if not installed and used in accordance with the instructions, may cause harmful interference to radio communications. However, there is no guarantee that interference will not occur in a particular installation.

If this equipment does cause harmful interference to radio or television reception, which can be determined by turning the equipment off and on, the user is encouraged to try to correct the interference by one or more of the following measures:

- Reorient or relocate the receiving antenna.
- Increase the separation between the equipment and receiver.
- Connect the equipment into an outlet on a circuit different from that to which the receiver is connected.
- Consult the dealer or an experienced radio/TV technician for help.

To maintain compliance with FCC's RF Exposure guidelines, This equipment should be installed and operated with minimum distance between 20cm the radiator your body: Use only the supplied antenna.