

H6078英语说明书

版本:1.0

料号:807-0003-00430

折叠尺寸:105×145 (mm)

展开尺寸:525×145 (mm)

材质:80G书页纸

工艺:单色印刷

折叠方式:风琴折

页数: 10 页



Safety Instructions

Read and follow the safety instructions below:

- Use the product with the provided power adapter only.
- Use it indoors. The product is not waterproof. Do not expose it to areas susceptible to water splashes or water drops.
- The internal light sources cannot be replaced. If the light sources sustain damage, the product should be replaced.
- Do not leave children unattended with the device. Children must be supervised by an adult while using the device.
- Do not disassemble or modify the device and its accessories.
- Avoid installing the device near potentially dangerous sources or heat sources (e.g., candles, liquid-filled objects.)
- The working temperature should be between 14 to 104°F (-10 to 40°C).
- Store the product in places where the temperature is within -4 to 140°F (-20 to 60°C) if you do not plan to use it for a long time.

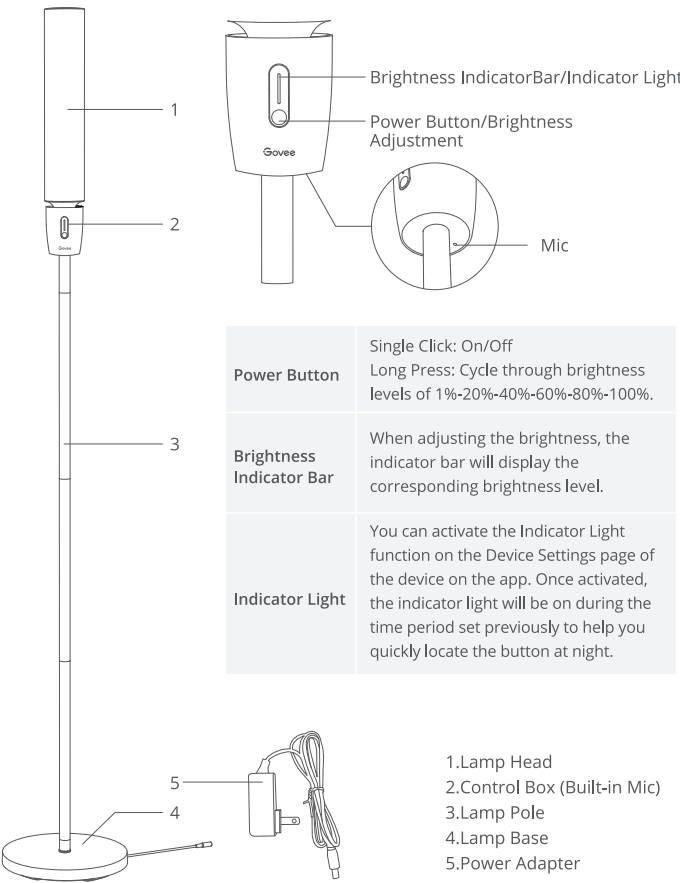
Introduction

Thanks for choosing Govee RGBICWW Cylinder Floor Lamp! This product is suitable for the living room, bedroom, working room, etc, which plays a role as your helpful “ambiance assistant”. The device can be controlled via buttons, app and voice assistants. Through Govee Home App, you can adjust the brightness, color temperature, change the colors and set multiple timers. With various scenes and music modes preset in the app, you can easily switch effects to your liking. In addition, you can bring your creativity to the lighting with the DIY Mode.

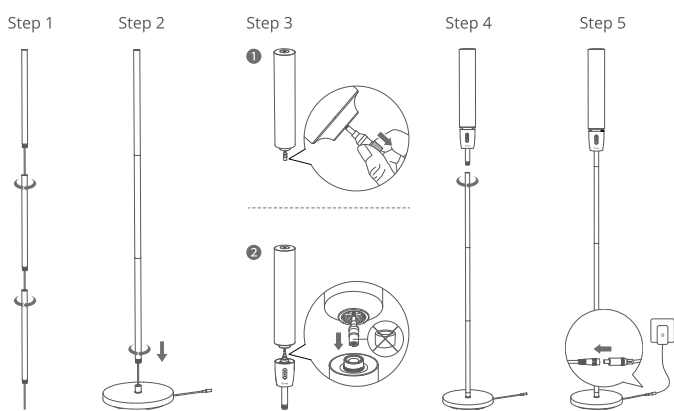
What You Get

Item	Quantity
Floor Lamp (Including Lamp*1, Control Box*1, Lamp Pole*3, Lamp Base*1)	1
Power Adapter	1
User Manual	1

At a Glance



Installing Your Device



1. Connecting the Lamp Poles: Connecting the three lamp poles in order.
2. Connecting the Lamp Pole and the Lamp Base: Put the cable through the lamp base. Then, turn the screw to tighten the lamp pole and the base.
3. Connecting the Lamp Head with the Control Box: Before connecting, please take off the silicone cap from the connector. After connecting the lamp head and the control box with the connector, turn the screw to tighten them.
4. Connect the Lamp Head with the Lamp Pole: Turn the screw to tighten them.
5. Connect to Power: Connect the adapter to the lamp via the DC charging port and plug the adapter into power.

Pairing Your Device with Govee Home App

What You Need:

- A Wi-Fi router supporting the 2.4GHz and 802.11b/g/n bands. 5GHz is not supported.
- ❶ Download Govee Home App from the App Store (iOS) or Google Play (Android). Log in with your account (new users need to create an account).
  - ❷ Turn on the Bluetooth on your smartphone.
  - ❸ Open the app, tap the “+” icon in the top right corner and search for “H6078”.
  - ❹ Tap the device icon and follow the on-screen instructions to complete pairing.



Specifications

Model	H6078
Adapter Input	AC 100-240V
Lamp Input	24VDC 1A
Color	RGBWW
Control Method	Button, App, Voice Control
Working Temperature	-10°C-40°C / 14°F-104°F



Govee Home App

For FAQs and more information, please visit: [www.govee.com](http://www.govee.com)

## Troubleshooting

### ❶ Cannot connect to Govee Home App.

- Check if the lamp has been powered on.
- Check if your smartphone's Bluetooth has been turned on or try connecting the lamp to another smartphone.
- Ensure that your smartphone is near the lamp when connecting for the first time.
- If the problem persists, go to "My Devices" page to delete the device and follow the previous instruction to reconnect.

### ❷ Cannot connect to Wi-Fi.

- Check if the lamp has been powered on.
- Do not skip connecting to Wi-Fi during the pairing process.
- Ensure that your Wi-Fi router is 2.4GHz capable (5GHz is not supported).
- Ensure that you entered the correct Wi-Fi password during the Wi-Fi connection process.
- Shorten the distance between the device and the Wi-Fi router to less than 50ft, then try reconnecting.
- Use another smartphone to pair with the device to check if your Wi-Fi network is working.

### ❸ Cannot pair or connect with Alexa or Google Assistant.

- Ensure that the Wi-Fi connection is stable.
- Go to the app Settings page and follow the instructions under "User Guide" to pair the device again.

## Customer Service

- Warranty: 12-Month Limited Warranty
- Support: Lifetime Technical Support
- Email: support@govee.com
- Official Website: www.govee.com
- @Govee @govee\_official @govee.official @Goveeofficial @Govee.smarthome

## FCC and ISCED Canada Statement

This device complies with Part 15 of the FCC Rules and Industry Canada licence-exempt RSS standard(s). Operation is subject to the following two conditions:

- (1) This device may not cause harmful interference, and
- (2) This device must accept any interference received, including interference that may cause undesired operation.

Warning: Changes or modifications not expressly approved by the party responsible for compliance could void the user's authority to operate the equipment.

Le présent appareil est conforme aux CNR d'Industrie Canada applicables aux appareils radio exempts de licence. L'exploitation est autorisée aux deux conditions suivantes :

- (1) l'appareil nedomit pas produire de brouillage, et
- (2) l'utilisateur de l'appareil doit accepter tout brouillage radioélec trique subi, même si le brouillage est susceptible d'en compromettre le fonctionnement.

**NOTE:** This equipment has been tested and found to comply with the limits for a Class B digital device, pursuant to Part 15 of the FCC Rules.

These limits are designed to provide reasonable protection against harmful interference in a residential installation. This equipment generates uses and can radiate radio frequency energy and, if not installed and used in accordance with the instructions, may cause harmful interference to radio communications. However, there is no guarantee that interference will not occur in a particular installation. If this equipment does cause harmful interference to radio or television reception, which can be determined by turning the equipment offfff and on, the user is encouraged to try to correct the interference by one or more of the following measures:

1. Reorient or relocate the receiving antenna.
2. Increase the separation between the equipment and receiver.
3. Connect the equipment into an outlet on a circuit difffferent from that to which the receiver is connected.
4. Consult the dealer or an experienced radio/TV technician for help.

This Class B digital apparatus complies with Canadian ICES-005.  
Cet appareil numérique de la classe B est conforme à la norme NMB-005 du Canada.

## FCC and IC Radiation Exposure Statement

This equipment complies with FCC and IC radiation exposure limits set forth for an uncontrolled environment. This equipment should be installed and operated with minimum distance 20cm between the radiator & your body.

la distance entre l'utilisation et l'appareil ne doit pas être inférieure à 20 cm.  
This device uses a non-replaceable light source. When the light source reaches the end of its life cycle, this device should be replaced.  
Not intended for illumination. Only used for creating ambiance.

- 1.Do not connect the rope light to the supply while it is in the packing or wound onto a reel;
- 2.Do not use the rope light when covered or recessed into a surface;
- 3.Do not open or cut the rope light;

### Responsible party :

Name: GOVEE MOMENTS(US) TRADING LIMITED  
Address: 13013 WESTERN AVE STE 5 BLUE ISLAND IL 60406-2448  
Email: support@govee.com  
Contact information: https://www.govee.com/support



FOR INDOOR USE ONLY  
POUR UNE UTILISATION EN INTÉRIEUR UNIQUEMENT

Govee is a trademark of Shenzhen Intellirocks Tech. Co., Ltd.  
Copyright ©2021 Shenzhen Intellirocks Tech. Co., Ltd. All Rights Reserved.



# User Manual



Model: H6078  
RGBICWW Cylinder Floor Lamp