

EXHIBIT 9**Internal Photographs**

(Pursuant to FCC Part 2.1033(b)(7), 2.1033(c)(12) and RSP 100 Sec 8.3)

The following photographs are attached.

Exhibit

- | | | |
|----|--|----|
| 1. | Main board <u>with</u> & <u>without</u> Shields (Top) | 9A |
| 2. | Main board <u>with</u> & <u>without</u> Shields (Bottom) | 9B |
| 3. | AP board <u>with</u> & <u>without</u> Shields (Top) | 9C |
| 4. | AP board <u>with</u> & <u>without</u> Shields (Bottom) | 9D |
| 5. | IPCB board (Top) | 9E |
| 6. | IPCB board <u>with</u> & <u>without</u> Shields (Bottom) | 9F |
| 7. | RF board <u>with</u> Chassis and Housing (Front) | 9G |
| 8. | RF board <u>with</u> Chassis and Housing (Back) | 9H |
| 9. | Exploded View of Radio | 9I |

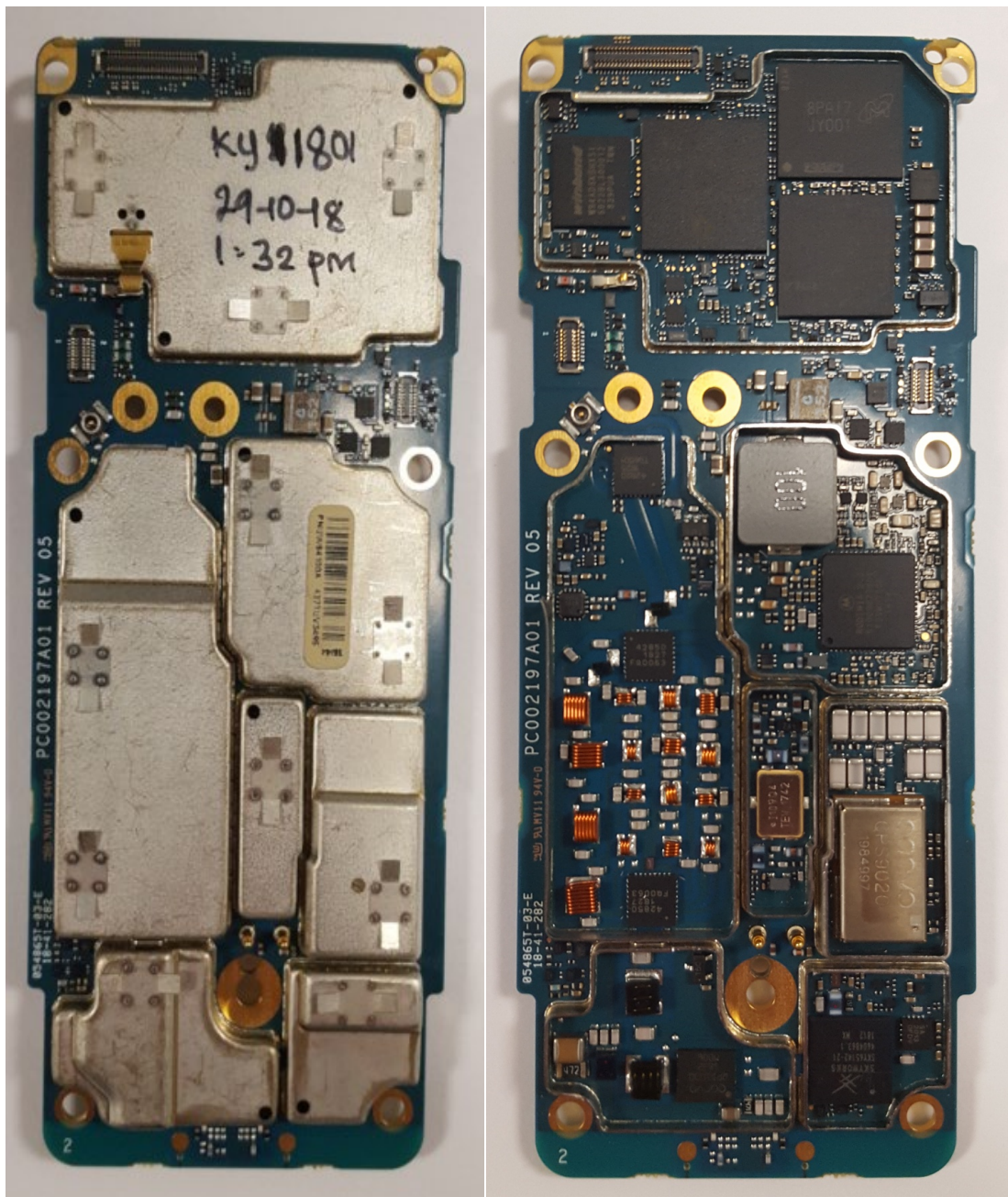


Exhibit 9A
Main board with & without Shields (Top)



Exhibit 9B
Main board with & without Shields (Bottom)

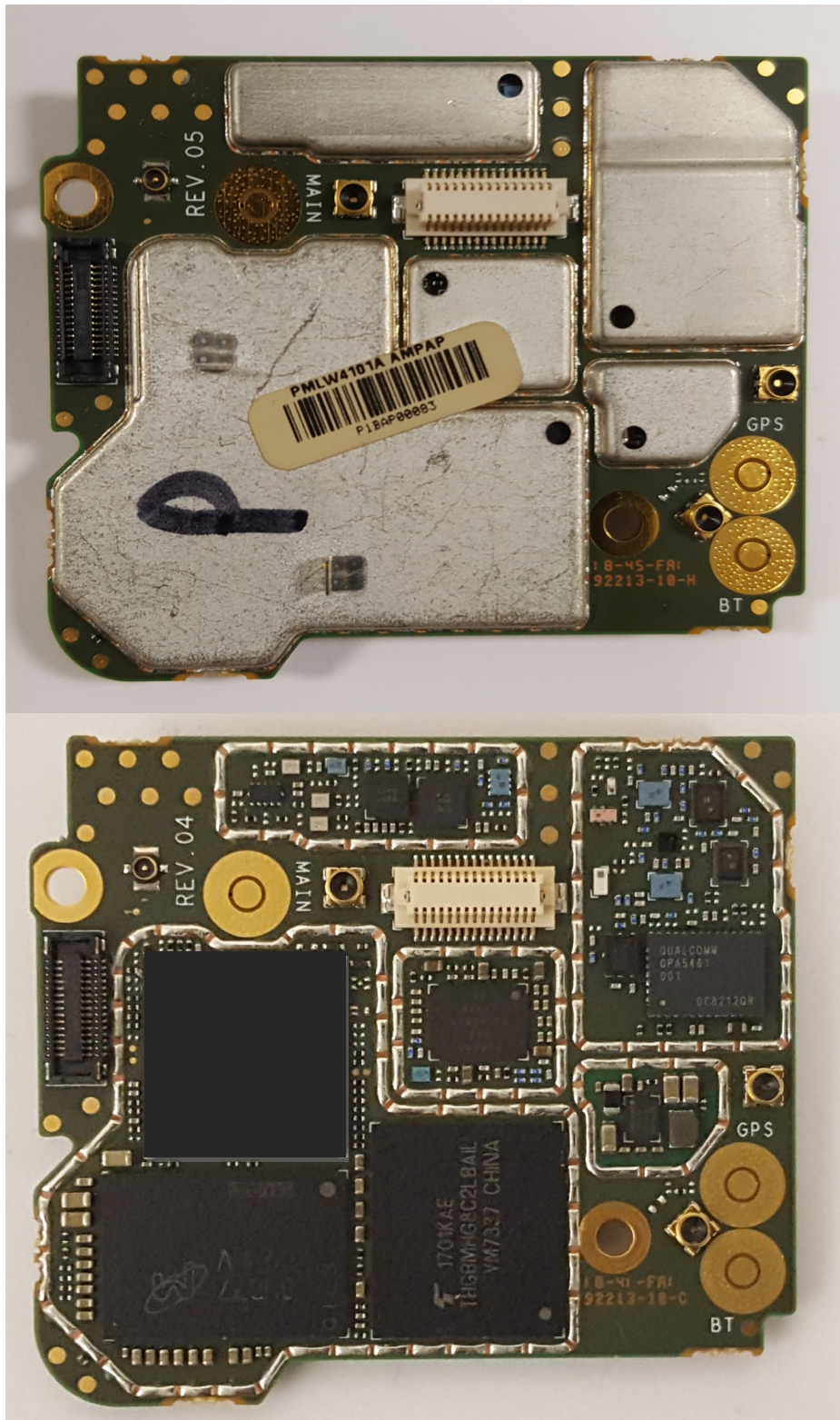


Exhibit 9C
AP board with & without Shields (Top)

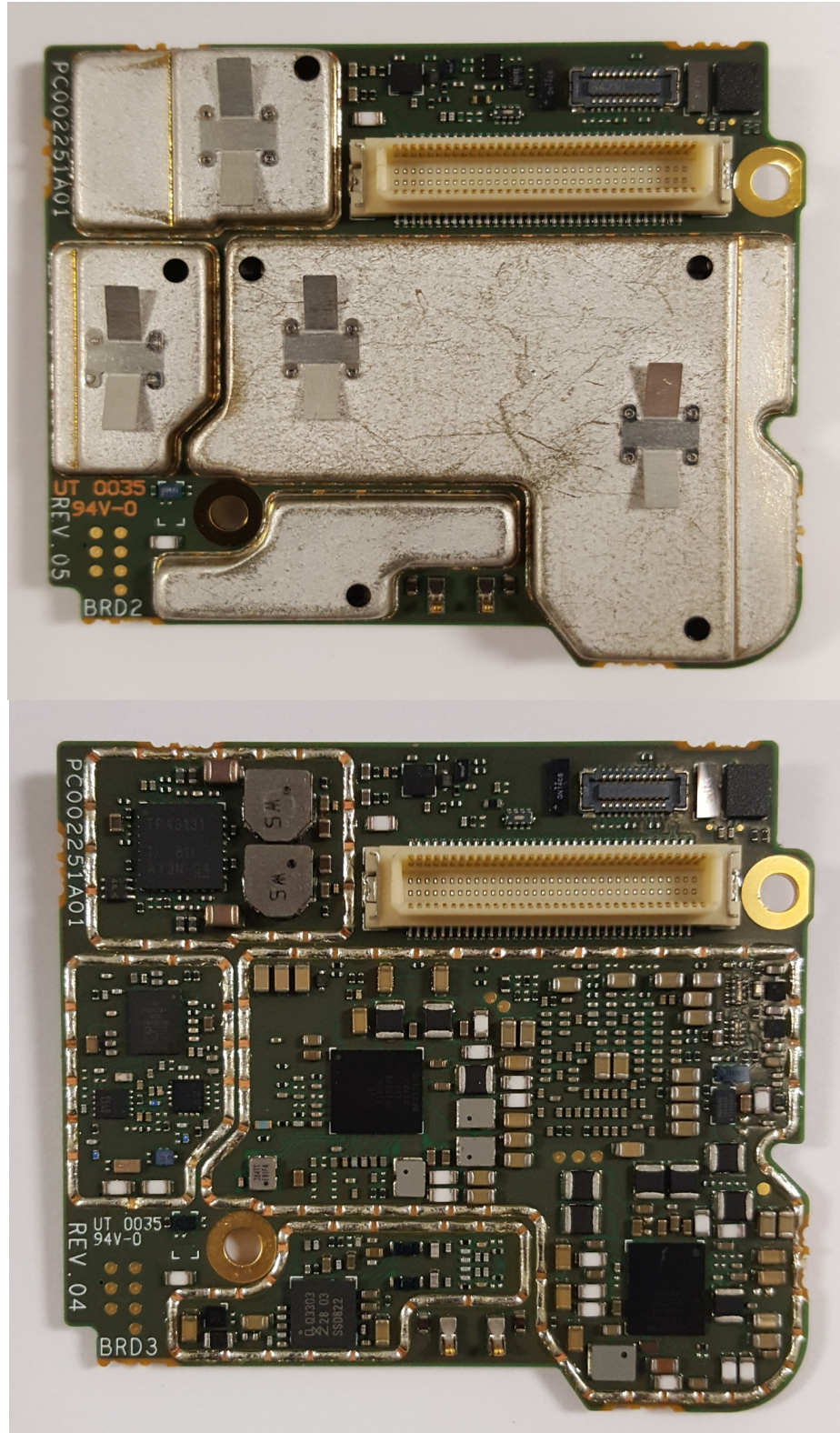


Exhibit 9D
AP board with & without Shields (Bottom)

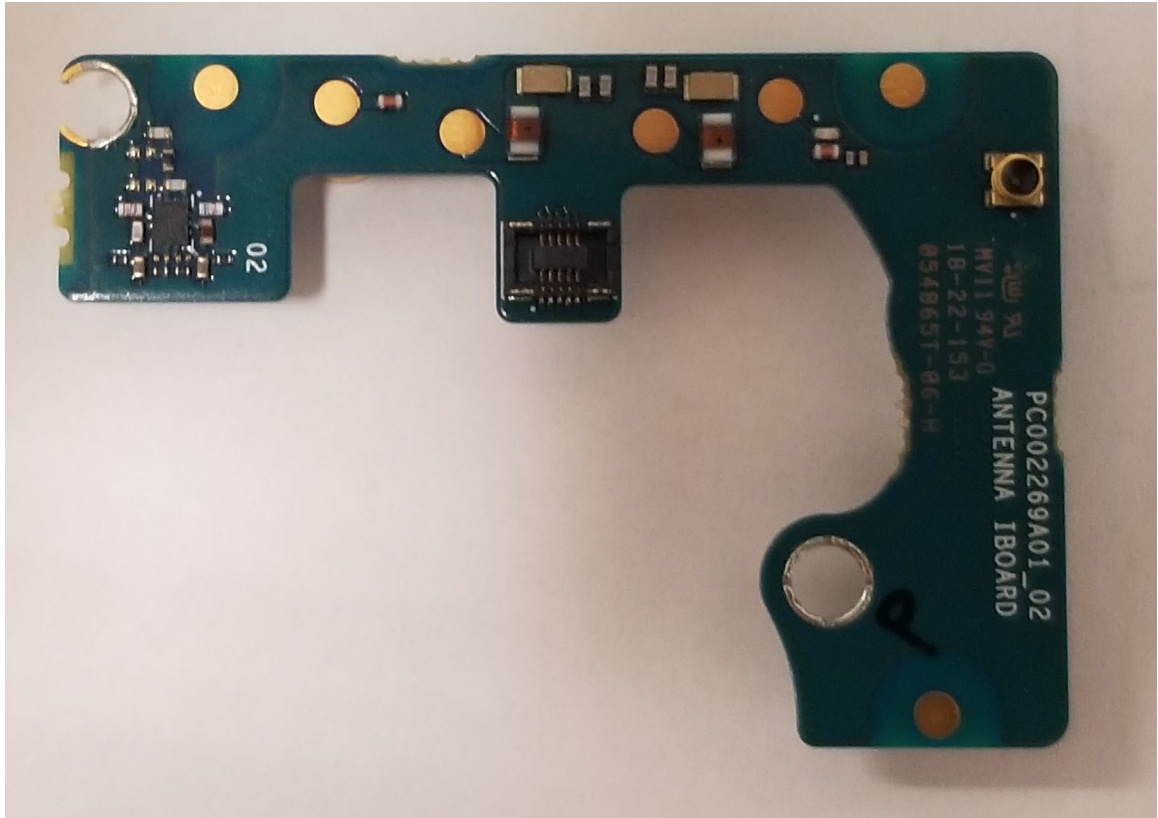


Exhibit 9E
IPCB board (Top)

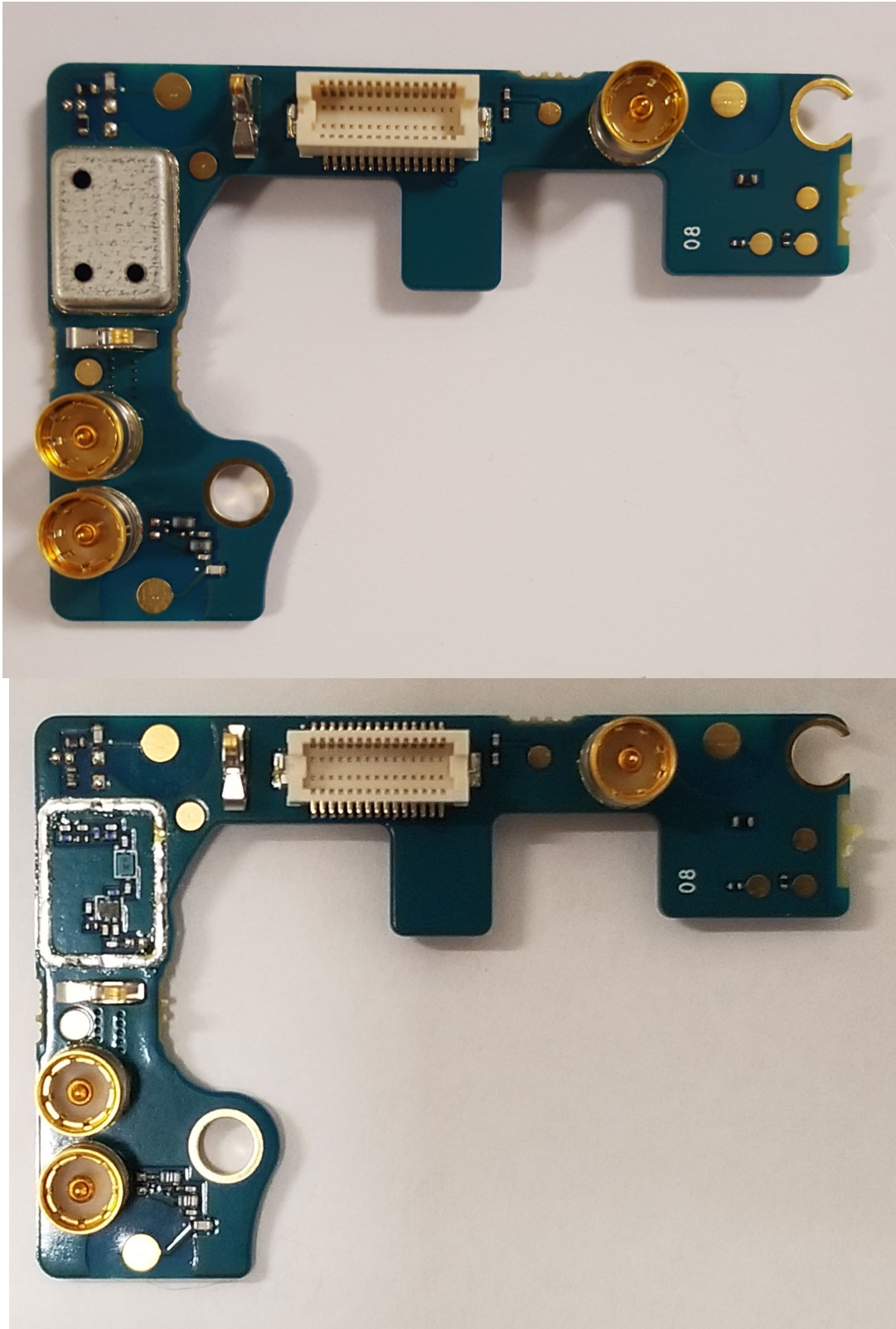


Exhibit 9F
IPCB board with & without Shields (Bottom)



Exhibit 9G
RF board with Chassis and Housing (Front)



Exhibit 9H
RF board with Chassis and Housing (Back)

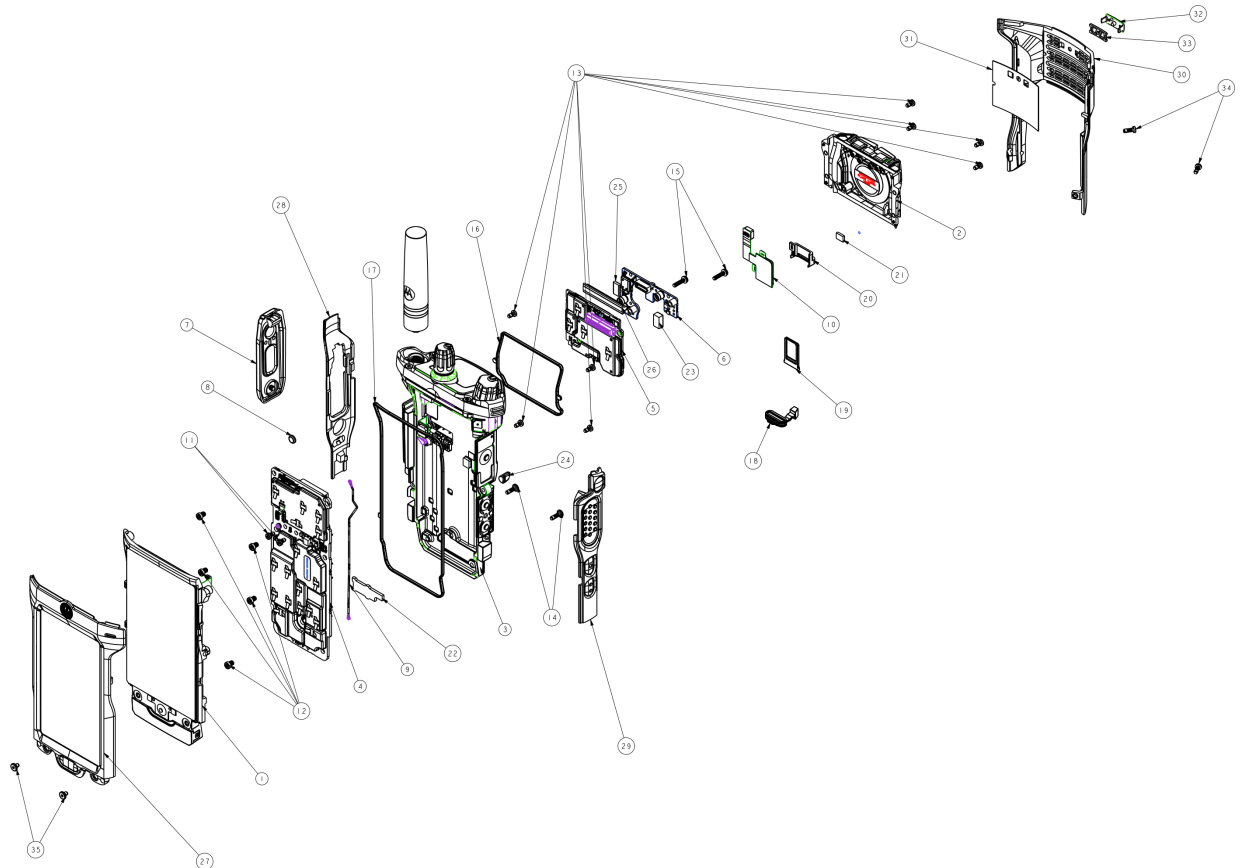


Exhibit 9I
Exploded View of Radio