

MagEZ Charging Stand for Tablets User Manual



Contents

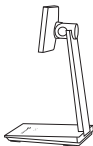
Package Contents	2
Features	3
Compatibility.....	5
Specs	5
Quick Guide	6
LED Indicators	14
Warranty	15
Exclusions & Limitations	16
Important.....	17
FAQ	19
Customer Service	21
Legal	21
FCC Warning.....	22

Welcome & Intro

Thank you for purchasing the MagEZ Charging Stand for Tablets, a magnetic charging stand for iPad with a Qi charging base.

Package Contents

1. MagEZ Charging Stand for Tablets *1
2. Type-C - C Charging Cable *1
3. Allen Wrench *1



①



②



③

Features

- A magnetic charging stand for iPad with a built-in wireless charging base for Qi-enabled smartphones and earbuds.
- 20W max charging speed for iPad and max 15W for Qi-enabled devices.
- Attach a tablet to use as a second screen or desktop computer.
- Rotates between portrait and landscape positions.
- Tilts forward 32.5 degrees and backward 5 degrees.
- Ergonomic eye-level design for the best viewing angle.
- Made from premium zinc and aluminum alloy, and aerospace-grade aramid fiber.
- Reusable gel pads stick firmly to tables, glass, etc.
- LED lights indicate charging status.

- A 45W PD fast charger is highly recommended for rated input.
- When using a PD20W or higher power adapter, the product will intelligently allocate the output power according to the different charger power, as follows:

Power Adapter Power	Charging at Either One		Simultaneous Charging	
	Charging Base	iPad Charging Pad	Charging Base	iPad Charging Pad
20W	10W	15W	5W	12W
30W	15W	18W	7.5W	18W
36W	15W	20W	10W	20W
45W+	15W	20W	15W	20W

- When using a PD20W power adapter, and charging at charging base and iPad charging pad simultaneously, the product will intelligently allocate 5W for charging base and 12W for iPad charging pad; when the product detects that the iPad is fully charged, it will intelligently adjust the power allocation and increase the charging base power to 7.5W or 10W.

Compatibility

- The magnetic charging stand is compatible with iPad Pro 2021/2022 and iPad mini 6 using the MagEZ Case Pro from PITAKA;
- The charging base is suitable for all Qi-enabled devices.

Specs

Items	Specifications
Material	Aluminum Alloy+Zinc Alloy+Aramid Fiber
Type-C Input	DC 9V/3A, 12V/3A, 15V/3A
Type-C Input	Support 20W or higher charger (45W PD fast charger is highly recommended)
Magnetic Charging Pad Output	DC 5V/3A, 9V/2.22A, 12V/1.67A
Wireless Output	5W/7.5W/10W/15W
Wireless Output distance	≤ 8mm
Other Function	Foreign Object Detection, Temperature Protection, Overcurrent Protection and Short Circuit Protection
Operating Temperature	14°F to 86°F (-10 to 30 °C)
Storage Temperature	-4°F to 140°F (-20 to 60 °C)
Operating Humidity	45 to 85%RH
Storage Humidity	30 to 90%RH
Adjustable View	Tilts forward 32.5° & backward -5°

Items	Specifications
Color	Black, Gun-Grey
Product Weight	665g/23.5oz
Product Size	133.97 x 123.97 x 245.17mm/5.3 x 4.9 x 9.7in

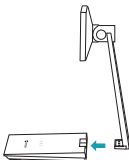
Quick Guide

1. MagEZ Charging Stand Assembling.

MagEZ磁吸充电支架组装。

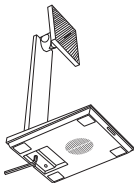
a. Slot the mount to the base.

将立柱带螺孔一端插入底座。



b. Secure the bolts with the Allen wrench included.

使用随附的内六角扳手固定螺栓。

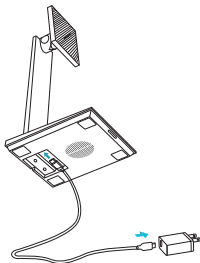


2. MagEZ Charging Stand Placement & Fixation

MagEZ磁吸充电支架放置&固定。

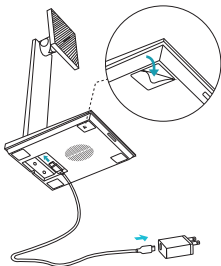
a. Connect the MagEZ Charging Stand and your USB-C power adapter (45W PD fast charger is highly recommended) with the Type-C - C Charging Cable included.

使用随附的Type-C转C充电线连接磁吸充电支架和您的充电器 (强烈推荐45W PD快速充电器)。



b. Clean and dry your work surface where you would like to place your MagEZ Charging Stand and peel off the base's protective film before placement.

清洁并擦干您想放置MagEZ磁吸充电支架的工作台面，并在放置前撕下底座黏胶的保护膜。

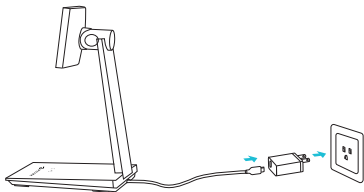


3. Charging.

充电。

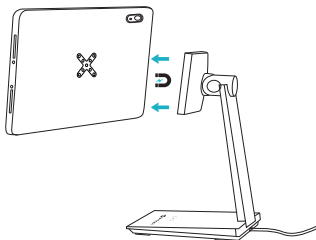
a. Connect to power.

接通电源。



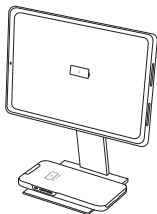
b. Simply attach your iPad equipped with our MagEZ Case Pro on the magnetic charging pad for up to 20W wireless-like charging experience.

只需将装备MagEZ Case Pro保护壳的iPad mini 6吸附到磁性充电面板上，即可获得高达20W的无线充电体验。



c. Place a Qi-enabled device, smartphone or earbuds, for example, on the charging base for up to 15W wireless charging (iPhone 7.5W/Android up to 15W/earbuds 5W).

将支持Qi无线标准的设备放在充电底座上，即可实现高达15W的无线充电 (iPhone 7.5W/Android最高15W/耳塞5W)。



*The mentioned MagEZ Case Pro is not included in this package.

*上述MagEZ Case Pro不包含在此包装内。



*Scan QR code for video instruction.



扫码查看操作视频

LED Indicators

Operating Status	LED Indicator Activity
Stand has power	Red and white lights flash alternately for 3s, then go off
The charging base is charging a device	White light stays on
The charging base standby	No lights
Overheating Protection	Red light flashes every 0.5s
Foreign Object Detection	Red light stays on
Overcurrent/ Short Circuit Protection	Red light stays on
Overvoltage/Low-voltage Protection	Red light flashes every second

Warranty

At PITAKA, we are always striving to provide our customers with the best quality products. The PITAKA MagEZ Charging Stand for Tablets is guaranteed for 6 months from the date of purchase. The MagEZ Charging Stand for Tablets is warranted to be free of defects in materials and function under normal use. A defect is defined as an imperfection or flaw during the manufacturing process. The warranty is non-transferable and covers the original end-user purchaser. PITAKA will only authorize the warranty claim if the products were purchased from an official store or an authorized dealer. For full details regarding warranty terms and exclusions, please visit: <https://www.ipitaka.com/pages/shipping-warranty>

Exclusions & Limitations

Except for the limited warranty expressly set forth or to the extent restricted or prohibited by applicable law, PITAKA expressly disclaims any other warranties express or implied, including any warranty of quality, merchantability, or fitness for a particular purpose, and you specifically agree that PITAKA shall not be liable for any special, incidental, indirect, punitive, or consequential damages of any type on any PITAKA product. In addition to and without limiting the generality of the foregoing disclaimers, the limited warranty does not, under any circumstances, cover the replacement or cost of any electronic device or personal property inside or outside of the PITAKA product.

Important

- Please use a safety-certified 20W or higher PD fast charger to power this product. A 45W PD fast charger is highly recommended.
- Please do not place any foreign object between the wireless charging base and the smartphone, so as not to affect the charging performance.
- Do not use or store this product in wet environments, and it's forbidden to place this product in a high temperature environment.
- It's best to place it in an environment with a temperature of $25\pm 5^{\circ}\text{C}$ and a humidity of $65\pm 20\%\text{RH}$ for long-term storage.
- All the electrical parameters must not exceed the parameters specified in this specification.
- Do not disassemble the product under any circumstances, let alone disassemble the built-in electronic components, otherwise, it may cause an internal short circuit, which may cause fire and other problems.

- Do not drop, impact or bend the product, or hit the product with sharp parts.
- Under any circumstances, it's forbidden to burn this product or throw it into the fire. Very dangerous!
- I- It's forbidden to immerse the product in any liquid, such as fresh water, sea water, beverages, gasoline, etc.
- Disposal of the product in ordinary garbage disposals is prohibited.
- Damaged products are prohibited from using. The product may get damaged due to impact and other reasons during transportation. If any abnormality is found, the product should not be used, and should be kept away from fire sources, under the scorching sun and other high-temperature occasions to avoid accidents.

FAQ

- **Q: Why does the wireless charging base overheat or charge slowly while charging a smartphone?**

A: 1. Adjust the position of your phone and make sure it's put within the specific area;

2.Check if the ambient temperature exceeds 82.4°F/28°C;

- **Q: Wireless charging is not working.**

A: 1. Check if the charging cable is OK, and if it's too thin or too long;

2.Check if the charger is OK;

3.Check if the charger power meets the requirements;

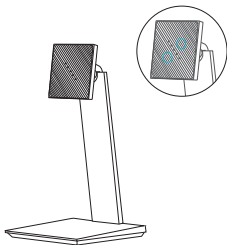
4.Adjust the position of your phone and make sure it's put within the specific area;

- **Q:** Magnetic charging pad for iPad is not working.

A: 1. Check if the iPad case is OK;

2. Check if the charging base is OK;

3. Long press the detection button on the silicone cover. If the lights are on, it means the magnetic charging pad works normally. Resultantly, it's very likely that the iPad case or the iPad is the problem.



Customer Service

Tel: +852 9202 6223

Email: support@ipitaka.com

Web: www.ipitaka.com

Legal

The manufacturer is not responsible for any damages to any device incurred through the use of this product. The manufacturer shall not, in any way, be liable to you or to any third party for any damages you or any third party may suffer as a result of use, intended or unintended, or misuse of this product in conjunction with any device or accessory other than the appropriate device for which this product is designed. The manufacturer will not be responsible for any damages you or any third party may suffer as a result of the misuse of this product as outlined above. The purchaser agrees to defend, indemnify, and hold the manufacturer harmless for any claims or damages arising from unintended use or misuse, including use with an unintended device.

FCC WARNING

This device complies with part 15 of the FCC Rules. Operation is subject to the following two conditions: (1) this device may not cause harmful interference, and (2) this device must accept any interference received, including interference that may cause undesired operation.

Any changes or modifications not expressly approved by the party responsible for compliance could void the user's authority to operate the equipment.

NOTE: This equipment has been tested and found to comply with the limits for a Class B digital device, according to Part 15 of the FCC Rules. These limits are designed to provide reasonable protection against harmful interference in a residential installation. This equipment generates, uses and can radiate radio frequency energy and, if not installed and used following the instructions, may cause harmful interference to radio communications. However, there is no guarantee that interference will not occur in a particular installation.

If this equipment does cause harmful interference to radio or television reception, which can be determined by turning the equipment off and on, the user is encouraged to try to correct the interference by one or more of the following measures:

- Reorient or relocate the receiving antenna.
- Increase the separation between the equipment and receiver.
- Connect the equipment into an outlet on a circuit different from that to which the receiver is connected.
- Consult the dealer or an experienced radio/TV technician for help.

To maintain compliance with FCC's RF Exposure guidelines, this equipment should be installed and operated with minimum distance between 20cm the radiator your body: Use only the supplied antenna.

FCC ID: **2ARI5-MCST101**

