

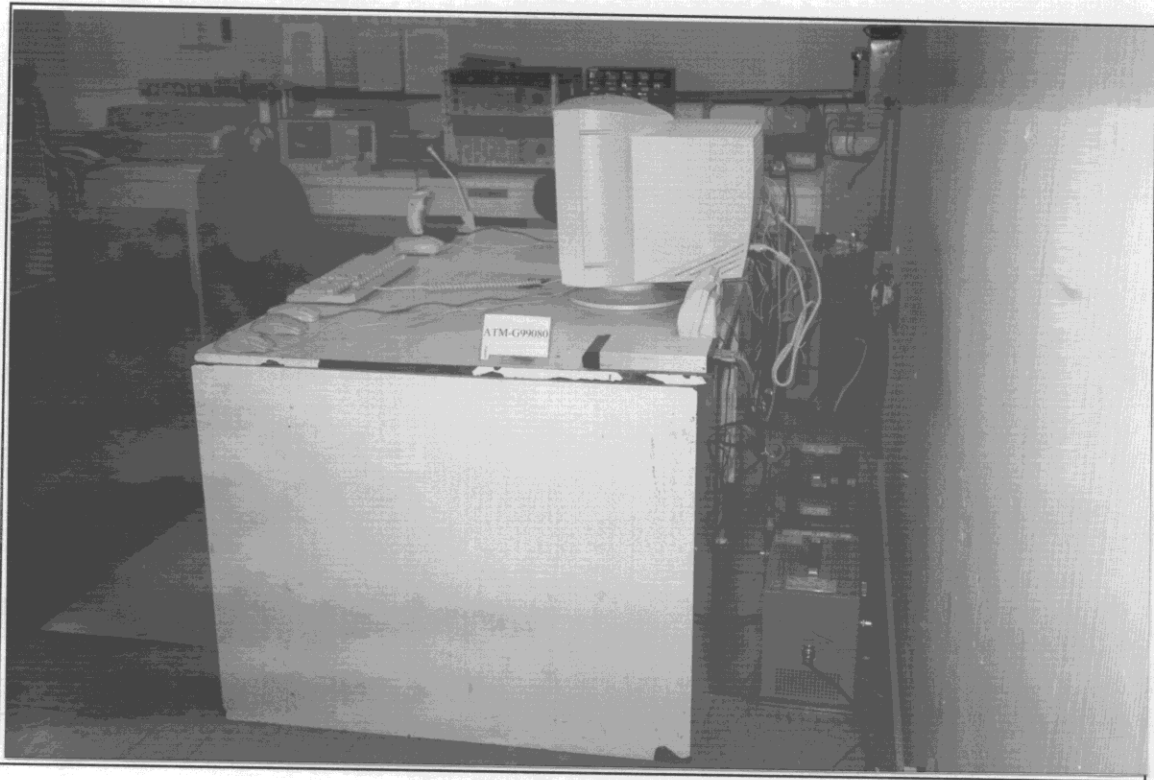
## 6. PHOTOGRAPHS

### 6.1. Photos of Powerline Conducted Measurement



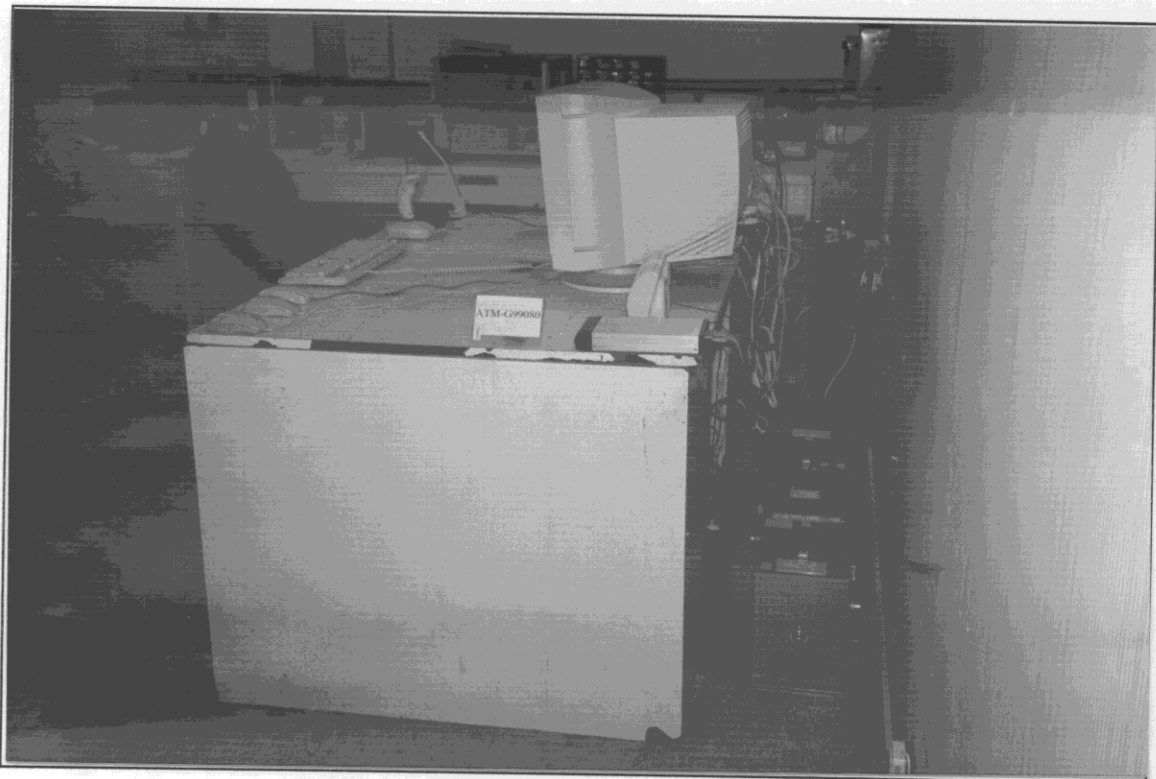
FRONT VIEW OF CONDUCTED TEST

w/D-Sub Cable



BACK VIEW OF CONDUCTED TEST

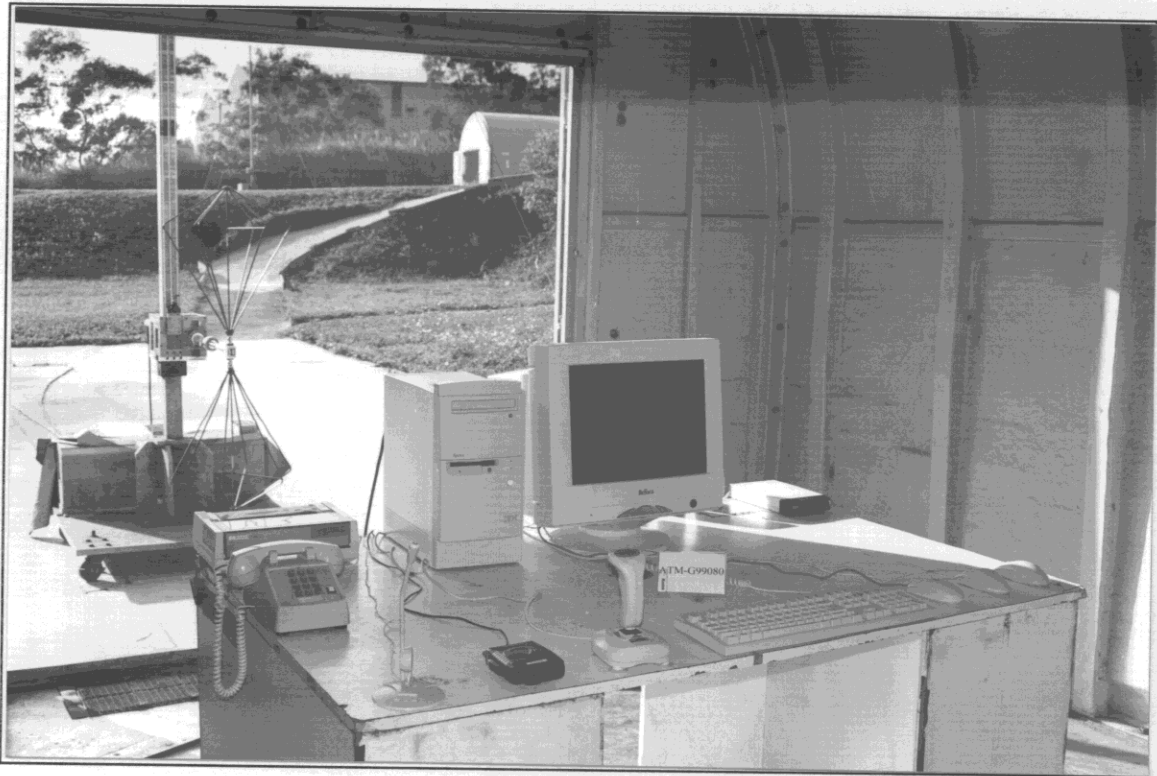
w/BNC Cable



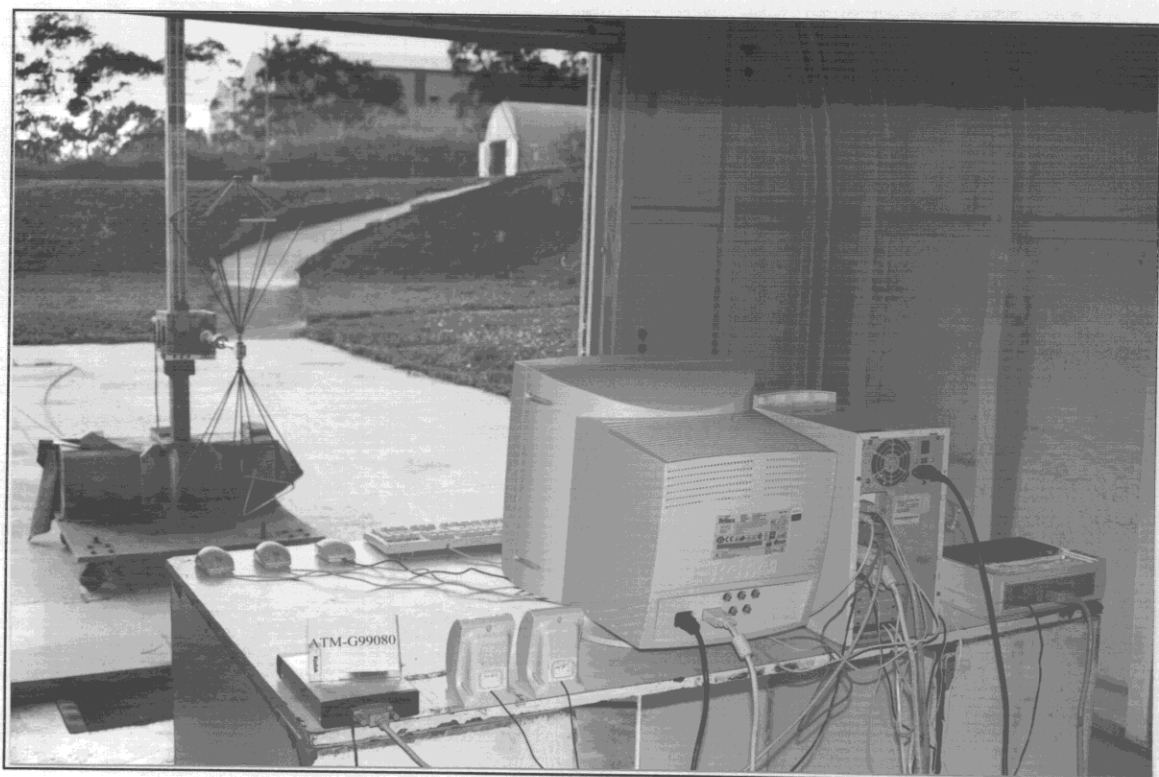
BACK VIEW OF CONDUCTED TEST

## 6.2. Photos of Radiated Measurement at Open Field Test Site

Test Mode: 91.146KHz/1280X1024, 85.024Hz; D-Sub Cable

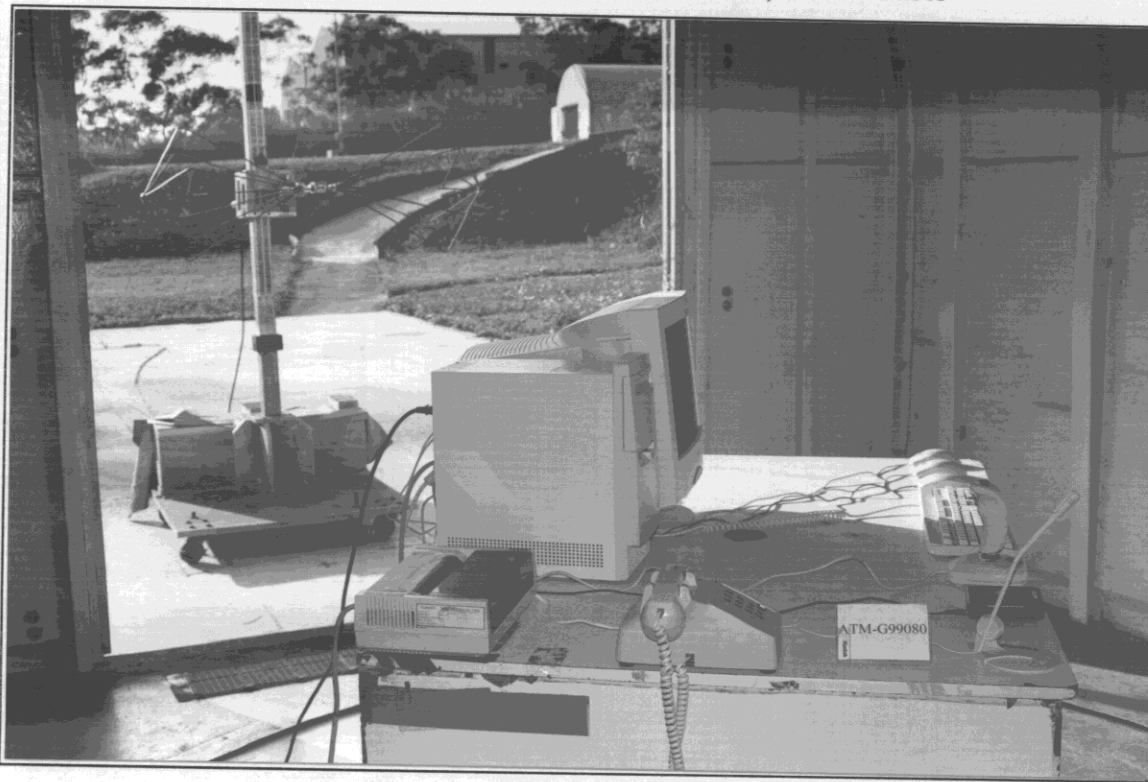


FRONT VIEW OF RADIATED TEST



BACK VIEW OF RADIATED TEST

Test Mode: 91.146KHz/1280X1024, 85.024Hz; D-Sub Cable



SETUP WITH MAXIMUM DETECTED EMISSION AT HORIZONTAL POLARIZATION

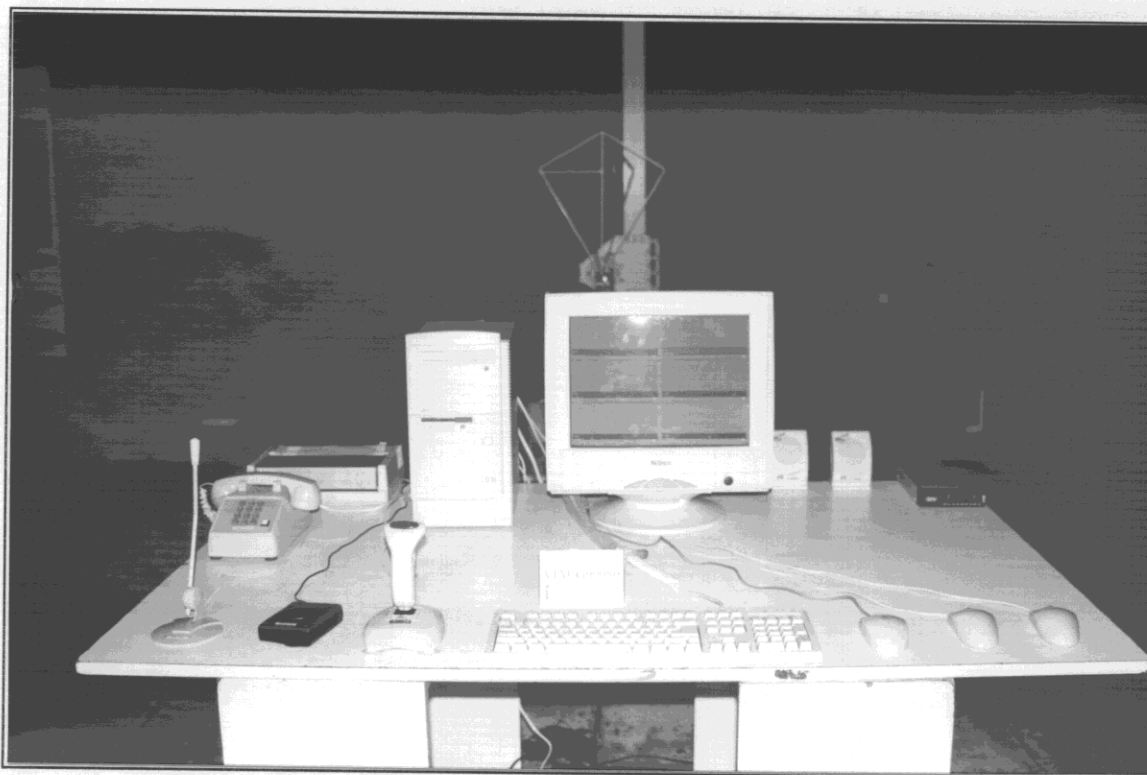


SETUP WITH MAXIMUM DETECTED EMISSION AT VERTICAL POLARIZATION

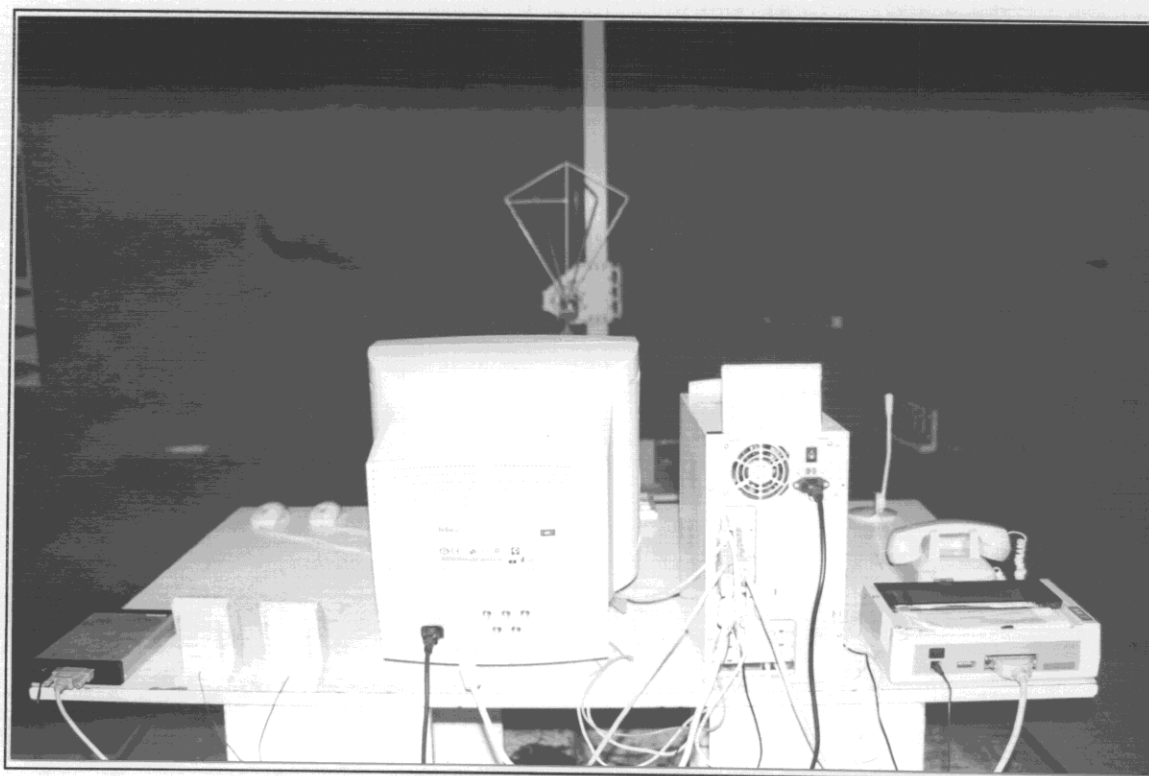


### 6.3. Photos of Radiated Measurement at Anechoic Chamber

w/D-Sub Cable

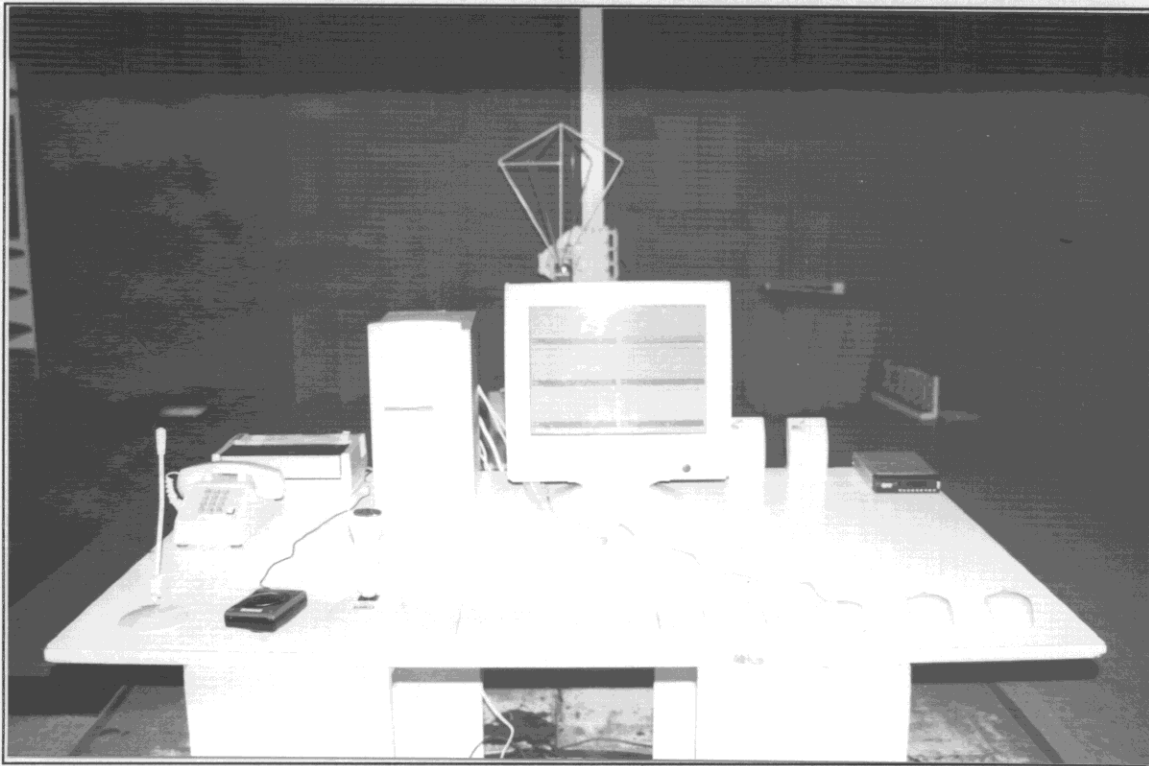


FRONT VIEW OF RADIATED TEST

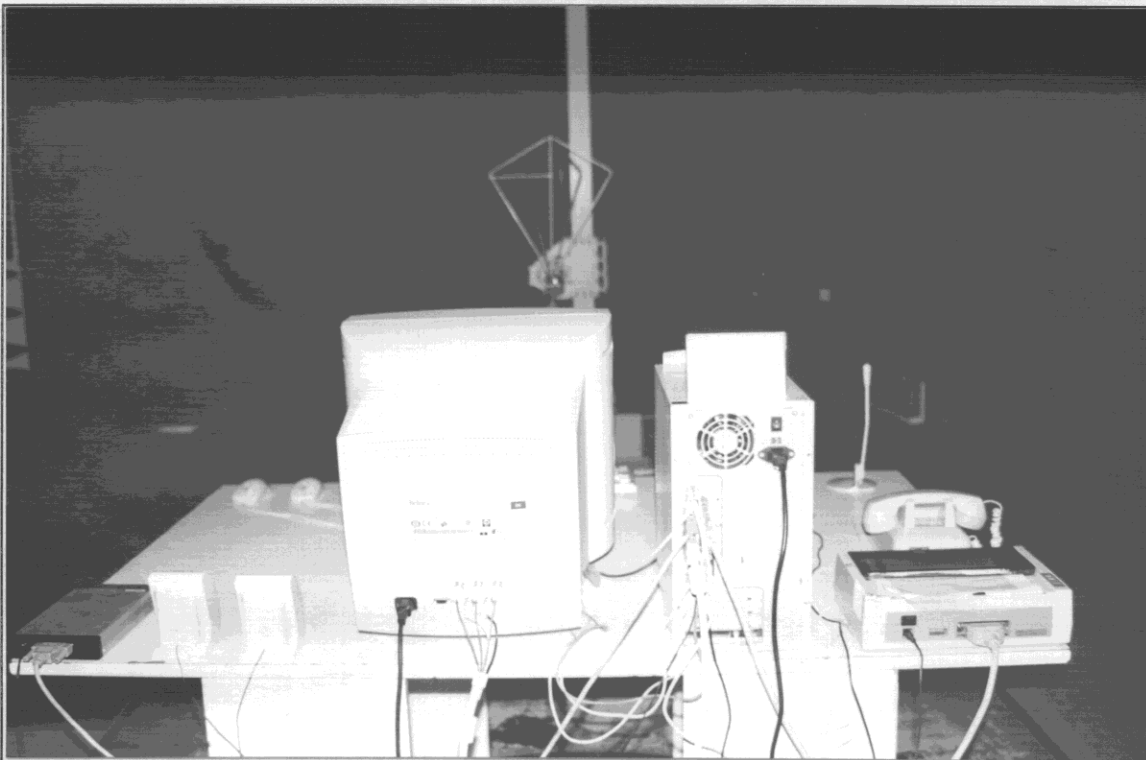


BACK VIEW OF RADIATED TEST

w/BNC Cable



FRONT VIEW OF RADIATED TEST



BACK VIEW OF RADIATED TEST