

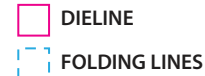


PRINTER SLUG FOR MANUAL

BRAND: **techcellent**
DESCRIPTION: **Manual for Wireless Charging Pad**
FILE NAME: **TC-OP-CP-100 Charger Manual**
ITEM NUMBER: **TC-OP-CP-100**

PRESS WORK: TRIM TO SIZE, SCORE & FOLD WHEN SPECIFIED
SCALE: 100%
COLOR(S): CMYK
SUBSTRATE TYPE: C2S ART PAPER 128gsm
VARNISHING TECHNIQUE: MATTE VARNISHING

PRESS SPEC COLOR REFERENCES



APPROVAL CHECKLIST:
PRIMARY DESIGNER: IOSIF
DATE: 06.15.2023
PROOF READ: DATE:
APPROVED BY: DATE:
AUTHORIZATION SIGNATURES:



SCORE AND FOLD AS SHOWN ON THIS PICTURE

DO NOT PRINT “PRINTER SLUG” LAYER!

Read all safety information below and operating instructions before using this Charger Pad to avoid injury and damage to your device, and store them for possible future reference. We assume no responsibility for the damage to the charged devices due to improper operation to this Charger Pad.
WARNING: Failure to follow these Safety Instructions could result in fire, electric shock, or other injury or damage.

SAFETY INSTRUCTIONS
The device is not intended for use by persons (including children) with reduced physical, sensory or mental capacity. Children should be monitored to ensure that they do not play with the device. The device should always be readily accessible. The device should not be exposed to dripping or splashing water. No objects filled with liquids such as vases shall be placed on the device. Do not puncture, throw, drop, bend or modify this product. Open flame sources, such as candles, should not be placed on top of the device. The device is intended for use only in a temperate climate. The product should not be exposed to excessive heat such as sunshine, fire or similar. Don't place credit cards, security badges, passports, or key fobs between or near your charging devices and the Charger Pad, because this might damage magnetic strips or RFID chips in those items. If the Charger Pad

cord is damaged, have it repaired by the manufacturer, its service or a similarly qualified person in order to avoid any hazard. Please contact the local recycling facility for disposing the product according to local and environmental regulations.
COMPATIBILITY: Compatible with most Apple® and Android™ devices that support wireless charging.

PACKAGE INCLUDES
TC-OP-CP-100 Universal Charging Pad with Light Indicator.
Charging Cable.
Instruction Manual.
Made in China.

SPECIFICATIONS
INPUT: 5V/2A, 9V/2A max.
OUTPUT: 10W/7.5W/5W.
Operational Temperature: 40°F (5°C) – 95°F (35°C).
Charging Distance: 0 - 0.25in (0-6mm).

HANDLING THE CHARGING PAD
Do not drop, disassemble, open, crush, bend, deform, puncture, shred, microwave, incinerate, paint, or insert foreign objects into this Charger Pad. Do not place any metallic

items on the surface of the product. If a non-Qi compatible device is used, charger may overheat.
PRECAUTIONS: Disable vibration features while charging to ensure vibration does not move the device and lose charge. Multiple Qi enabled devices cannot be charged at the same time.

AVOIDING WATER AND WET LOCATIONS
Do not use this Charger Pad in rain or near washbasins, or other wet locations. Take care not to spill any food or liquid on this Charger Pad. In case this Charger Pad get wet, unplug all cables, turn off Charger Pad (press the power button for 3 seconds) before cleaning, and allow it to dry thoroughly before turning it on again. Do not attempt to dry this Charger Pad with an external heat source, such as microwave oven or hair dryer. A Charger Pad that has been damaged as a result of exposure to liquids is not serviceable.

REPAIRING OR MODIFYING CHARGER PAD
Never attempt to repair or modify this Charger Pad by yourself, disassembling this Charger Pad including the removal of its screws, may cause damage that is not covered under the

INSIDE PAGES

warranty. If this Charger Pad has been submerged in water, punctured, or subjected to a severe fall, do not use it until you take it to the service provider.

OPERATION INSTRUCTIONS
Connect your charger to an AC adapter. Use the included Micro USB charging cable. Place the charger on a level surface. Place your device on the charger with the display facing up. For best performance, place it in the center of the charger. Your device should start charging a few seconds after you place it on your wireless charger. Confirm that your device has a built in Qi receiver or insert a Qi wireless receiver before charging. Place your Qi enabled device in the center of the charging plate.

LED LIGHT STATUS
1. When the power is turned on, the blue light and red light will flash once respectively, and red light is solid to show that the Wireless charger is ready.
2. When charging your device, the indicator will glow blue.
3. When fully charged, the indicator light remains solid blue.

OUTSIDE PAGES

FCC COMPLIANCE STATEMENT
This device complies with Part 15 of the FCC Rules. Operation is subject to the following two conditions: (1) this device may not cause harmful interference, and (2) this device must accept any interference received, including interference that may cause undesired operation.
Note: This equipment has been tested and found to comply with the limits for a Class B digital device, pursuant to part 15 of the FCC Rules. These limits are designed to provide reasonable protection against harmful interference in a residential installation. This equipment generates, uses and can radiate radio frequency energy and, if not installed and used in accordance with the instructions, may cause harmful interference to radio communications. However, there is no guarantee that interference will not occur in a particular installation. If this equipment does cause harmful interference to radio or television reception, which can be determined by turning the equipment off and on, the user is encouraged to try to correct the interference by one or more of the following measures:
Reorient or relocate the receiving antenna.
Increase the separation between the equipment and receiver.
Connect the equipment into an outlet on a

circuit different from that to which the receiver is connected.
Consult the dealer or an experienced radio/TV technician for help.
Caution: Any changes or modifications not expressly approved could void the user's authority to operate the equipment.
Wholesale Merchandisers LLC is not responsible for any damage due to misuse of this device.
*All trademarks and copyrights are property of their respective owners.
Apple® is trademark of Apple Inc., registered in the U.S. and other countries.
Android™ is a trademark of Google LLC.
Qi is a trademark of Wireless Power Consortium.
This product is not designed, manufactured, sponsored, or endorsed by Apple Inc.
Wholesale Merchandisers LLC has no affiliation to Apple Inc.
*Photos are for illustration purposes only.
DIST. BY WHOLESALE MERCHANDISERS LLC
2929 WALKER, NW, GRAND RAPIDS, MI 49544
www.meijer.com



FCC RF exposure statement:
The equipment complies with FCC radiation exposure limits set forth for an uncontrolled environment. This equipment should be installed and operated with minimum distance between 20cm the radiator your body.



10w

Wireless chrg puck 10W

TC-OP-CP-100