

Go to www.vtechphones.com to register your product for enhanced warranty support and the latest Vtech product news.



vtech®

Quick start guide

For more support information



VM3258-2

2.8" Video Monitor with Night Light



Power requirements	Parent unit: 3.0V, 2600mAh Li-Ion, 9.36Wh Baby unit power adapter: Output: 5V DC @ 600mA
Nominal effective range	Maximum power consumed by FCC and C. Actual operating range may vary according to environmental conditions at the time of use.
LCD	2.8" Color LCD (1024x480 pixels)
Channels	32
Transmit frequency	Baby unit: 2403 - 2425 MHz Parent unit: 2403 - 2425 MHz
Frequency control	Crystal controlled PLL synthesizer

TECHNICAL SPECIFICATIONS

IMPORTANT SAFETY INSTRUCTIONS

The applied nameplate is located at the bottom of the baby unit's base.

When using your equipment, basic safety precautions should always be followed to reduce the risk of fire, electric shock and injury, including the following:

1. Follow all warnings and instructions marked on the product.
2. Read the instructions carefully.
3. **CAUTION:** Do not install the baby unit at a height where it can be reached by children.
4. This product is not a substitute for adult supervision of the infant. Supervising the infant is the parent's or caregiver's responsibility. This product could cause operating, and therefore you should not assume self-sufficient working properly for any given period of time. Further, this is not a medical device and should not be used as such. This product is intended to assist in supervising your baby. Do not use this product near water. For example, do not use it near a bath tub, swimming pool, kitchen sink, laundry tub or swimming pool, or in a wet basement or shower.
5. Do not use the product near water. For example, do not use it near a bath tub, swimming pool, kitchen sink, laundry tub or swimming pool, or in a wet basement or shower.
6. **CAUTION:** Use only the battery provided. There may be a risk of explosion if a wrong type of battery is used in the parent unit. The battery cannot be subjected to high or low extreme temperatures and low or pressure at high altitude during use, storage or transportation. Dispose of battery into fire or hot days, or mechanical crushing or cutting or the battery can result in an explosion. Leaving the battery in an extremely high temperature surrounding environment can result in an explosion or the leakage of flammable liquid or gas. Battery subjected to extremely low air pressure may result in an explosion or the leakage of flammable liquid or gas. Dispose of used battery according to the information in the **BASIC** use.
7. Use only the adapters included with this product. Incorrect adapter polarity or voltage can seriously damage the product.

8. **Power adapter information:** Parent unit output: 5V DC 1A
FCC Test Communications Ltd. Model: VT05EE050000
Baby unit output: 5V DC 600mA
FCC Test Communications Ltd. Model: VT05EE050000
Do not remove this tag.
9. **Rechargeable battery information:** Model: VT05EE050000
Li-ion battery, 3.6V, 2600mAh, 9.36Wh
Model: VT05EE050000
Li-ion battery, 3.6V, 2600mAh, 9.36Wh
Do not remove this tag.
10. The power adapters are intended to be correctly oriented in a vertical or floor mount position. The power adapters should not be connected to a wall outlet. It is plugged into a ceiling, under the LED or cabinet outlet.
11. For plugable near the electrical, the correct outlet shall be installed near the equipment and shall be easily accessible.
12. Unplug this product from the wall outlet before cleaning. Do not use liquid or aerosol cleaners. Use a damp cloth for cleaning.
13. Do not cut off the power adapters to replace them with other plugs, as this causes a hazardous situation.
14. Do not allow anything to rest on the power cords. Do not install the product where the cords may be walked on or tripped over.
15. This product should be protected only from the type of power source indicated on the marking label. If you are not sure of the type of power source, do not use it.
16. Do not overload wall outlets or use an extension cord.
17. Do not place this product on an unstable table, shelf, stand or other unstable surface.
18. This product should not be placed in any area where proper ventilation is not provided. Slots and openings in the back or bottom of the product are provided for ventilation. To protect the product from overheating, do not place it on a surface such as a bed, sofa or rug. This product should never be placed near or over a radiator or heat register.

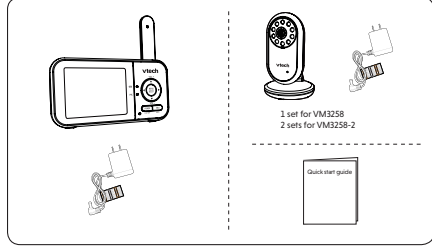
19. Never push objects of any kind into this product because this may damage the product.
20. To reduce the risk of electric shock, do not disassemble this product. Do not attempt to repair or modify the product. If you are not an authorized service facility, opening or removing parts of the product other than specified access may expose you to dangerous voltages or other risks. Incorrect reassembly can cause electric shock.
21. You should test the sound reception every time you turn on the unit or move it to a new location.
22. Periodically examine all components for damage.
23. There is a very small risk of fire or explosion when using certain electronic devices, such as baby monitors, medical devices, etc. To protect your privacy, make sure the product has never been used before purchases, test the baby monitor periodically by powering off and then powering on the unit, and power off the baby monitor if you will not use it for some time.
24. Children should be supervised to ensure that they do not play with the product.
25. The product is not intended for use by persons (including children) with reduced physical, sensory or mental capabilities, or lack of experience and knowledge, unless they have been given supervision or instruction concerning use of the appliance by a person responsible for their safety.

26. **SAFETY INSTRUCTIONS**
Use and store the product at a temperature between 0°F and 140°F.
Do not use the product in extreme cold, heat or direct sunlight. Do not put the product close to a heating source.
Batteries should not be exposed to excessive heat such as bright sunlight or fire.
27. **Warning—Strangulation Hazard:** Children have STRANGLED in cords. Keep the cord out of reach of children (more than 3 ft (0.9m) away). Do not remove this tag.
28. Never place the baby unit(s) inside the baby's crib or playpen. Never cover the baby unit(s) or parent unit with anything such as a towel or blanket.
29. Other electronic products may cause interference with the baby unit(s). If you are using other electronic products, such as baby monitors, medical devices, etc. To protect your privacy, make sure the product has never been used before purchases, test the baby monitor periodically by powering off and then powering on the unit, and power off the baby monitor if you will not use it for some time.

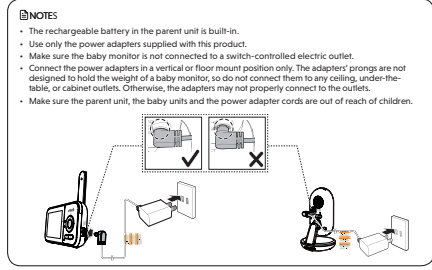
30. **Precautions for users of implanted cardiac pacemakers:** Cardiac pacemakers (implies only) to digital cordless devices. Wireless Technology Research, LLC (WTR), an independent research entity, led a multi-disciplinary evaluation of the interference between portable wireless devices and implanted cardiac pacemakers. Supported by the U.S. Food and Drug Administration, WTR recommends to physicians that:
• Should keep wireless devices at least six inches from the pacemaker.
• Should NOT place wireless devices directly over the pacemaker, such as in a breast pocket, when it is turned on.
WTR's evaluation did not identify any risk to bystanders with cardiac pacemakers from the use of WTR's products.
31. **Electromagnetic fields (EMF):** If handled properly and according to the instructions in this user's manual, the product is safe to be used based on scientific evidence available today.

32. **Precautions for users of implanted cardiac pacemakers:** Cardiac pacemakers (implies only) to digital cordless devices. Wireless Technology Research, LLC (WTR), an independent research entity, led a multi-disciplinary evaluation of the interference between portable wireless devices and implanted cardiac pacemakers. Supported by the U.S. Food and Drug Administration, WTR recommends to physicians that:
• Should keep wireless devices at least six inches from the pacemaker.
• Should NOT place wireless devices directly over the pacemaker, such as in a breast pocket, when it is turned on.
WTR's evaluation did not identify any risk to bystanders with cardiac pacemakers from the use of WTR's products.
33. **Electromagnetic fields (EMF):** If handled properly and according to the instructions in this user's manual, the product is safe to be used based on scientific evidence available today.

WHAT'S IN THE BOX



1 CONNECT THE BABY MONITOR



1 CONNECT THE BABY MONITOR (CONT'D)

Charge the parent unit battery
When you have connected and turned on the parent unit, the battery will be charged automatically.

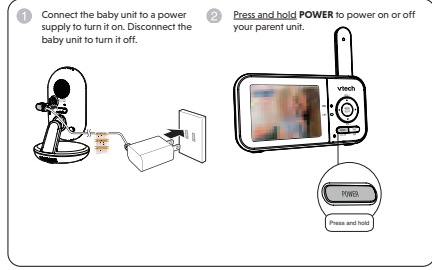
NOTES

- Before using the baby monitor for the first time, charge the parent unit battery for 12 hours. When the parent unit battery is fully charged, the battery icon becomes solid.
- It takes longer to charge the battery when the parent unit is turned on. To shorten the charging time, turn the parent unit off while charging.
- The standby time varies depending on the sensitivity level you set, your actual use and the age of the battery.

The battery icon indicates the battery status (see the following table).

BATTERY INDICATORS	BATTERY STATUS	ACTION
The screen displays	The battery has very little charge and may be used for only a short time.	Charge without interruption (about 30 minutes).
The battery icon becomes solid	The battery is fully charged.	To keep the battery charged, connect it to AC power when not in use.

2 POWER ON OR OFF THE BABY MONITOR



3 POSITIONING THE BABY MONITOR

CAUTION

- Keep the baby unit out of the reach of your baby. Never place or mount the baby unit inside the baby's crib or playpen.

NOTES

- Before using the baby monitor for the first time, charge the parent unit battery for 12 hours. When the parent unit battery is fully charged, the battery icon becomes solid.
- It takes longer to charge the battery when the parent unit is turned on. To shorten the charging time, turn the parent unit off while charging.
- The standby time varies depending on the sensitivity level you set, your actual use and the age of the battery.

The battery icon indicates the battery status (see the following table).

BATTERY INDICATORS	BATTERY STATUS	ACTION
The screen displays	The battery has very little charge and may be used for only a short time.	Charge without interruption (about 30 minutes).
The battery icon becomes solid	The battery is fully charged.	To keep the battery charged, connect it to AC power when not in use.

CAUTION

- The default volume of your parent unit is level 3, and the maximum volume is level 5. If you experience high-pitched screaming noise from your baby monitor while positioning:
 - Make sure your baby unit and parent unit are more than 3 feet (1 meter) apart, OR
 - Turn down the volume of your parent unit.

NOTE

- To avoid interference from other electronic devices, place your baby monitor at least 1 foot (1 meter) away from devices such as wireless routers, microwaves, cell phones and computers.

4 STATUS CHECK

Once you power on both your baby unit and parent unit, the parent unit displays image from the baby unit, and the LINK LED light turns on.

The baby unit's **POWER LED** light turns on.

BASIC OPERATION - PARENT UNIT

Use the menu
Press **MENU** to enter the menu, or save a setting. You can use the parent unit for advanced settings or operations, such as to play or stop the baby unit's lullaby, or to adjust the baby unit's sound sensitivity.

While in the menu:

- Press **Left/Right** to scroll among the menu options.
- Press **Up/Down** to select an item.
- Press **ENTER** to confirm your selection.
- Press **TALK/EXIT** to exit the menu and return to live view.

Turn off the screen
Press **POWER/LCD OFF** to switch off the screen. You can still hear sound from the selected baby unit.

Talk to your baby unit
Press and hold **TALK** and speak to your parent unit. Your voice is transmitted to the baby unit. Release **TALK** when done talking and hear your baby again.

Adjust parent unit speaker volume

- Press **▲VOL+ / ▼VOL-** to adjust your parent unit speaker volume.

Zoom

1. Press **MENU** when in idle mode.
2. Choose
3. Press **▲VOL+ / ▼VOL-** to choose or . Press **ENTER** to confirm your selection.

Overview - Parent Unit

1. Antenna
2. Battery LED light
3. Level indicator light
4. Arrow keys
5. ▲VOL+ / ▼VOL-
6. MENU/SELECT
7. LINK LED light
8. TALK/EXIT
9. Microphone
10. Power jack
11. RESET
12. Speaker

OVERVIEW - BABY UNIT

Overview - Baby Unit

1. Light Sensor
2. Camera lens
3. Infrared LEDs
4. POWER LED light
5. Night Light
6. Microphone
7. Speaker
8. PAIR hole
9. The parent unit and baby unit(s) provided are already paired.
10. Night light ON/OFF
11. Slots for wall mounting

NEED HELP?

For operations and guides to help you using your video monitor, and for latest information and supports, go and check the online help topics and online FAQs.

Use your smartphone or mobile device to access our online help.

- Go to <https://help.vtechphones.com/VM3258> or <https://help.vtechphones.com/VM3258-2> OR
- Scan the QR code on the right. Launch the camera app or QR code scanner app on your smartphone or tablet. Hold the device's camera up to the QR code and frame it. Tap the notification to trigger the redirection of the online help.
- If the QR code is not clearly displayed, adjust your camera's focus by moving your device closer or further away until it is clear.

You can also call our Customer Support at 1 (800) 595-9511 (in US) or 1 (800) 267-7377 (in Canada) for help.

PARENT UNIT ICONS

Status icons

- **Connection status**
 - displays when strong signal strength is detected between the baby unit and the parent unit.
 - or displays when moderate or low signal strength is detected between the baby unit and the parent unit.
- **Patrol mode**
 - Displays when the parent unit is in **PATROL** mode (For VM3258-2 only).
- **Current view status**
 - Displays the baby unit number of the baby unit that is being viewed.
- **Zoom**
 - Displays when the current image on the parent unit has zoomed in.
- **Night vision**
 - Displays when the baby unit being viewed has activated the night vision feature.
- **Talkback**
 - Displays when talking back to the baby units from parent unit.
- **Lullaby**
 - Displays when a lullaby is playing.
- **Night light**
 - Displays when the baby unit's night light is turned on.
- **Mute alert**
 - Displays when the parent unit speaker volume is set to zero.
 - Displays when the parent unit is talking to the baby unit.
- **Real-time temperature**
 - Displays the real-time temperature detected by the baby unit in Fahrenheit (°F) or Celsius (°C) (e.g. 97°F or 34°C).
- **Battery status**
 - animates when the battery is charging.
 - displays solid when the battery is fully charged.
 - displays when the battery is low and needs charging.

Main menu icons

- **Volume**
 - Adjust the parent unit's speaker volume.
- **Screen off timer**
 - The parent unit display will dim to conserve energy after your chosen amount of time of inactivity.
- **Brightness**
 - Adjust the parent unit's LCD screen brightness level.
- **Zoom**
 - Zoom in and out of the video displayed from the baby unit.
- **Temperature**
 - Turn on/off temperature alert tone.
 - Set the parent unit to beep whenever the room temperature detected by the baby unit falls outside of the set temperature range.
 - Set the minimum/maximum temperature.
 - Set temperature display in Fahrenheit (°F) or Celsius (°C).
- **Sound Detection**
 - **VOX (Voice Activated Alert)**
 - You can choose to hear sounds that exceed a certain level. Adjust the microphone sensitivity of your baby unit, the higher the sensitivity level, the more sensitive the baby unit is in detecting sounds to be transmitted to the parent unit. See **Sound sensitivity and sound activation** section.
 - **Sound-activated screen**
 - When it is on, and the baby unit detects no sound, the parent unit screen stays off to save power. Once a sound is detected, the parent unit screen and speaker turns on automatically, and you can see and hear your baby. The parent unit will then turn off again after 50 seconds of no sound detection.
- **Note**
 - When the parent unit screen is off and it receives alerts, for example, link lost between parent unit and baby unit, or battery is low, the parent unit screen and speaker will turn on.

