

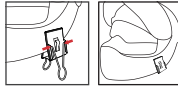
MOUNTING (PERMANENT MOUNT)

- 1) Locate and clean a position on the left side of helmet close to lower edge of the helmet.
- 2) Peel off the 3M double sided tape protective film and place the mount with logo on bottom and place Mount to the position in step 1.
- 3) Apply pressure to the metal bracket to ensure that the bracket is firmly secured. Note: It takes 24hours for adhesive to set.



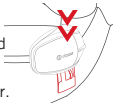
MOUNTING (TEMPORARY MOUNT)

- 1) Position and fasten the clip bracket onto the helmet.
- 2) Remove the metal handles after clip bracket has been installed.
- 3) Use additional anti-slip rubber patch provided if required.



INSTALL CONTROL UNIT

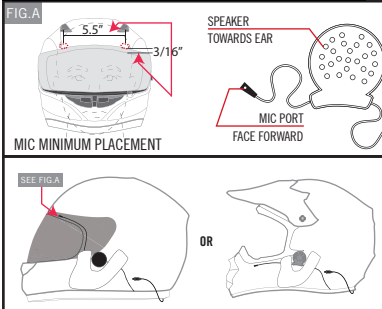
- 1) From the top, slide AMP unit onto the bracket. You should hear a 'click' sound when fully inserted.
- 2) Fully insert the speaker USB connector.



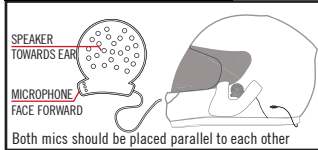
REMOVE CONTROL UNIT

- 1) Remove USB speaker connector.
- 2) Slide AMP upward to release from

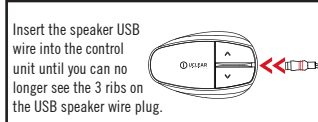
PULSE PRO & BOOST PRO PLACEMENT



BOOST PLUS PLACEMENT



SPEAKER USB PLUG



TECHNICAL DATA

Bluetooth: V4.2 (BR/EDR/BLE), Class 1
Profiles: HSP, HFP, A2DP
Intercom: AVRCP
Carrier Frequency: 2.402 - 2.480 GHz
Range: Up to 700m (0.43mi)
AMP Pro Multi-Hop Intercom: 2 Users and Up
AMP Plus Multi-Hop Intercom: 2-6 Users
AMP Multi-Hop Intercom: 2 Users

Battery: 3.7V, 500mAh Lithium-ion
Talk Time: Up to 10 Hours
Stand by Time: 400 Hours
Operating Temp: -30C(-4F) to 60C(140F)
Required Charging Temp: 0°C(32F) to 45°C(+113 F°)
Controller Unit Size: 60 x 40 x 18mm(2.9 x 1.75 x 1")
ClearLink: Android 4.4 or Later. Apple iOS 8 or Later

BUTTON CONFIGURATION REFERENCE

BASIC COMMANDS

Power On	Hold Press "Power" once for 2 seconds
Power Off	Hold "Power" for 5 seconds
Activate Bluetooth Pairing	Hold "Up" and "Down" for 2 seconds
Volume Up	Press "Up" once per volume level
Volume Down	Press "Down" once per volume level
Reset	Press "Power", "Up" and "Down" once simultaneously

PHONE CALLS

Pick up Incoming Call	Press "Power" Once
End Call In Progress	Hold "Power" for 2 Seconds
Reject Incoming Call	Hold "Power" for 2 Seconds
Voice Dial	Hold "Power" and Down for 2 Seconds
Last Number Redial	Hold "Power" and Up for 2 Seconds

MUSIC

Play	Press "Power" 2 Times
Stop	Press "Power" 1 Time
Fast Forward Track	Press "Up" Button 2 Times
Backtrack	Press "Down" Button 2 Times

GROUP INTERCOM

Pairing as Unit 1	Unit is off, "Power" and "Down" for 3 seconds
Pairing as Unit 2	Unit is off, "Power" and "Up" for 3 seconds
Connect intercom	Hold "Up" for 2 Seconds
Disconnect intercom	Hold "Down" for 2 Seconds

OPEN INTERCOM

Activate Open Pairing	Unit is off, hold "Power" for 10 seconds
Activate [other brand] Pairing	Refer to the Respective Manufacturer User Manual
Connect intercom	Hold "Up" for 2 Seconds
Disconnect intercom	Hold "Down" for 2 Seconds

PRIVATE INTERCOM

Set Up	While all units are connected, hold "Power" and "Up"
Switch To Group Intercom	Press "Power" 1 Time
Switch To Private Intercom	Press "Power" 1 Time

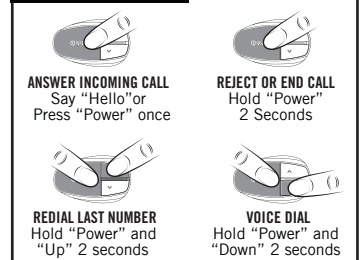
BUTTONS



PAIRING TO SMARTPHONE

- 1) Power on the unit. Hold "Up" and "Down" 2 seconds until LED alternately blinks blue and red.
- 2) Turn on the phone's Bluetooth, search Bluetooth device list and select/connect your AMP model.
- 3) After successful Pairing power off Unit to store Phone into Memory. When AMP Pro, AMP Plus or Amp is powered on, it will auto connect to the phone.

PHONE FUNCTIONS



MUSIC PLAYBACK



MUSIC SHARE (AMP PRO & AMP PLUS ONLY)

- 1) Pair Units for Group Intercom(See Above)
 - 2) On Unit 1 quickly press "Power" & "Down" two times.
 - 3) On Unit 2 quickly press "Power" & "Up" two times.
 - 4) Both Units will blink blue and red until paired. On successful pairing units will blink Blue.
- Unit 1 will now share it's music to unit 2

GROUP INTERCOM

- 1) Power off all the units.
- 2) On the 1st unit, hold "Power" and "Down" 5 seconds, LED will blink purple.
- 3) On the 2nd unit, hold "Power" and "Up" button 5 seconds, LED will blink purple, wait until the previous unit blinks blue, then proceed to next step.
- 4) Repeat step 3 if you have more units. Go to step 5 if no more units.
- 5) To end the pairing process, press "Power" on the last unit in the chain.
- 6) Power Off all Units to store pairing into memory.

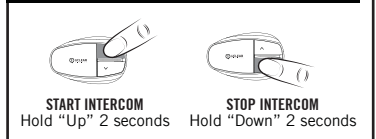
ENABLE 2 PARTY PRIVATE INTERCOM WITHIN GROUP INTERCOM

- 1) Make sure all intercom units are powered on and Paired for Group Intercom(see group intercom) and are in Intercom Mode.
 - 2) On unit 1 and unit 2 press "Power" and "Up" until indicator blinks purple.
 - 3) After both units are blinking purple press "Power" on unit 2 to end the pairing process.
- Note: You will only need to pair this ONCE and you can create multiple private groups in a Group Intercom.
- TO ENTER GROUP INTERCOM FROM PRIVATE INTERCOM
Press "Power" once. A single "Beep" will sound.
- TO ENTER PRIVATE INTERCOM FROM GROUP INTERCOM
Press "Power" once. A double "Beep" will sound.

CROSS-BRAND INTERCOM PAIRING

- 1) Set your [Other brand] intercom device in pairing mode.
- 2) Power on the AMP unit by pressing the power button 10 seconds until LED blinks purple. Pairing is successful when AMP LED blinks blue.
- 3) Power Off AMP unit to store pairing into memory.

GROUP & CROSSBRAND INTERCOM USE



STATUS INDICATOR REFERENCE

1) Off (No Power)	N/A
2) On (Bluetooth not connected)	Blinks Blue Quickly
3) On (Bluetooth connected)	Blink Blue Slowly
4) Phone & Music Device Pairing Mode	Blinks Blue and Red Alternately
5) Call in Progress	Blinks Blue Very Slowly
6) In-coming Call	Blinks Blue and Red Alternately
7) Battery Low	Blinks Red Every 2 Seconds
8) Power Down	Blinks Red 5 Times
9) Intercom Connected	Blinks Blue Twice Every 2 Seconds
10) Intercom Pairing Mode (first unit)	Blinks Purple Fast
11) Intercom Pairing Mode (subsequent unit)	Blinks Purple Slowly
12) Battery Charging	Solid Red
13) Battery Fully Charged	Solid Blue
14) Battery Faulty	Solid Purple

AMP SERIES USER GUIDE

Thank you for purchasing the UCLEAR Digital AMP Series Bluetooth Helmet Communication System. Our customers are our top priority, and we strive for 100% satisfaction. If you have any questions on how to operate, install or general questions about the Amp system or it's accessories please do not hesitate to contact us.



FCC NOTICES

FCC COMPLIANCE STATEMENT FCC ID:NMCAMPO2

This device complies with part 15 of the FCC rules. Operation is subject to the following two conditions:

- (1) This device may not cause harmful interference, and
- (2) This device must accept any interference received, including interference that may cause undesired operations.

Note: The manufacturer is not responsible for any radio or TV interference caused by unauthorized modifications to this equipment. Any modifications to the equipment will void the manufacturer's warranty.

This device complies with Industry Canada license-exempt RSS standard(s). Operation is subject to the following two conditions:

- (1) This device may not cause interference, and (2) this device must accept any interference, including interference that may cause undesired operation of the device. This Class[B] digital apparatus complies with Canadian ICES-003.

Cet appareil s'accorde avec Industrie Canada licence-exempte RSS standard.

- (1) cet appareil ne peut pas causer l'interférence, et (2) cet appareil doit accepter de l'interférence, y compris l'interférence qui peut causer l'opération non désirée de. Cet appareil numérique de la classe B est conforme à la norme NMB-003 du Canada

NCC NOTICES

Administrative Regulations on Low Power Radio Waves Radiated Devices warning:

Article 12

Without permission granted by the NCC, any company, enterprise, or user is not allowed to change frequency, enhance transmitting power or alter original characteristic as well as performance to a approved low power radio-frequency devices.

Article 14

The low power radio-frequency devices shall not influence aircraft security and interfere legal communications; If found, the user shall cease operating immediately until no interference is achieved. The said legal communications means radio communications is operated in compliance with the Telecommunications Act.

The low power radio-frequency devices must be susceptible with the interference from legal communications or ISM radio wave radiated devices.

NOTICES

WARRANTY

Without prejudice of legal warranty, the AMP Unit is covered under a (2) Two year warranty and a (1) One Year Warranty for Accessories by manufacturer from the date of purchase. Please provide the proof of purchase when you return the item to the supplier. The warranty covers manufacturing defects only. The warranty is voided by any unauthorized repairs, misuse, misapplication, tampering of the product, modifications, upgrading or results of any failures to follow the guidelines as set out in the product brochure or by any of the actions specified in this brochure or anywhere in our technical publishing released to the public from time to time which would have voided the warranty. Your product must be registered at uclear-digital.com upon purchase.

Warranty does not cover data recovery and physical deterioration due to use, damages resulting from accidents, storage, loss or data loss or damage during repairs or transits. The sender will bear all transportation charges for functioning products but which were declared defective.

LIMITATIONS OF WARRANTY

All product warranties for the product by are limited to those mentioned in the product manual. You must register your product upon purchase at uclear-digital.com, and warranty period is good for (2) two years for Amp Control Units and (1) one year on accessories from purchase date.

WAIVER AND DISCLAIMER

BITwave, and all their representatives, partners, agents, distributors, suppliers and resellers shall not be liable and will be held harmless from any and all litigation, claims, debts, demands, actions and liability which may arise, directly or indirectly, from operating or using the product for any damages, losses, distress, pain, suffering, discomfort, loss and injuries including bodily harm illness, strains, fractures, partial and/or total paralysis, death or other ailments that could cause serious disability either to any persons, or any parties whether the user or other third parties or their possessions, or to any goods, vehicles, properties, assets among others including your own suffered by any persons, organizations, or any third parties whether physical or otherwise and which may accrue to you in the future, to the fullest extent permitted by law as a result of the use, operation, malfunctioning, misuse, disposal or repairs of the product or any other reasons, conditions or circumstances or attempts to do so whether due to negligence, omissions, or otherwise of BITwave, or any of their representatives, partners, agents, distributors, suppliers, resellers, designer, manufacturer or any others in its supply and distribution chain or any third parties involved. All risks from operating or usage of the product rest solely and entirely with the user of this product, the original purchaser or any third parties, who assumes full responsibility for all injuries, losses and/or damages, whether caused in whole or in part by the negligence, omissions or other conduct of others, including that of BITwave, and all their representatives, partners, agents, distributors, suppliers, resellers and all others in its supply and distribution chain either due to the designer's or manufacturer's negligence or omissions or any third parties involved.

CORRECT DISPOSAL OF THIS PRODUCT

Do not dispose this product with other household wastes at the end of its working life. There is a separate collection system for used electronic products in accordance with legislation that requires proper treatment, recovery and recycling. Household users should contact either the retailer where they purchased this product, or their local government office, for details of where and how they can take this item for environmentally safe recycling. Business users should contact their suppliers and refer to the terms and conditions of the purchase contract. This product should not be mixed with other commercial wastes for disposal.

PRODUCT INFORMATION

BITwave, and all their representatives, agents, distributors, suppliers or resellers shall not be held responsible for any consequences arising from any errors or omissions in the guide or resulting directly or indirectly from the use of the information herein. BITwave reserves the right to amend or improve the product design or user guide without any restrictions and without any obligation to notify users. All information here is accurate as of the date of printing.

Please periodically check for the latest firmware version to receive feature enhancements on ClearLink App. Download Clearlink App at the Google Play or Apple App store.

PERSONAL SAFETY

Do not open the seal of the hardware, tamper, repair or modify any parts. Do not touch the product with metal objects or parts or chemical products. Violation of the above will lead to potential fire hazards and mishaps. Please contact UCLEAR Digital technical support or your if your product malfunctions.

Always comply with the local law and traffic regulations. Where use of the product is not permitted or allowed by any laws and regulations including the traffic laws of your country, we warn you not to go against such restrictions. You will bear the full responsibilities of any breaches of Law and Regulations.

You should not allow the operations or use of the product or any attempts to use it by any persons including yourself to compromise anyone's safety including your own or to cause harm to any vehicles, property, objects, livestock, inventories, assets and the like under any circumstances. You or any users of the product are to take all necessary safety measures and precautions and to remain alert to all surrounding conditions. You are warned not to operate the product if you are not physically capable of doing so in a safe manner, if you have or will consume any alcohol or any mind-altering substance during its operation so that your alertness is compromised or if you have any medical conditions or needs that may compromise your abilities to do so in a safe manner. We warn you of the inherent, unforeseeable and unlimited risks and dangers in using the product while in traffic, including injury or illness, strains, fractures, partial and/or total paralysis, death or other ailments that could cause serious disability due to any causes. This product is only for use by persons eighteen (18) years of age and above who have understood the warnings, risks and the terms of use. You confirm that you have read this release of liability and fully understand its terms and that you have given up substantial rights by using or attempting to use the product.



ATTENTION

PLEASE READ THROUGH THE OPERATING INSTRUCTIONS TO UNDERSTAND HOW TO OPERATE THE AMP SYSTEM, IN PARTICULAR THE SAFETY INSTRUCTIONS.

- > Please note that there are some countries that by law disallow the rider to set the UCLEAR Digital Amp unit to a volume that prevents you hearing your surroundings.
- > Please note that in some countries the use of both speakers simultaneously is authorized only out of public traffic conditions.
- > Please check with the relevant authorities for local safety legislation before using UCLEAR Digital Amp unit on the road.
- > Please learn how to use the buttons by looking into the mirror before using the UCLEAR Digital Amp unit on the road.
- > Prolonged exposure to loud sounds may lead to permanent hearing damage.
- > Speaker volume is greater than 90 dB may lead to permanent hearing damage.
- > Do not attempt to place an outgoing call through the mobile phone while riding on the motorcycle, ATV/UTV at any point of time.
- > Please do not use the UCLEAR Digital Amp unit in anyway that may distract you or hinder your judgement while on the move. Never compromise your safety and the safety of others.



WARNING

- > Charging and handling rechargeable battery products incorrectly may cause them to overheat, catch fire or explode. To prevent this please follow the instructions below:
 - i) Never change the batteries yourself, always contact UCLEAR Digital to perform the replacement for you.
 - ii) When charging, use ONLY the charging cable provided or a replacement cable from a UCLEAR Digital dealer. Using similar, compatible or any other cables may lead to permanent product damage and will void the product warranty.
- > Never make any modifications to any part of the UCLEAR Digital Amp unit in any way as it may cause the system to malfunction causing hurt to you.
- > Do not modify your helmet to use with this system - it is not necessary to do so.

EQUIPMENT NOTICES

Changes or modifications not expressly approved by the party responsible for compliance could void the user's authority to operate the equipment.

This equipment has been tested and found to comply with the limits for a Class B digital device, pursuant to Part 15 of the FCC Rules. These limits are designed to provide reasonable protection against harmful interference in a residential installation. This equipment generates, uses and can radiate radio frequency energy and, if not installed and used in accordance with the instructions, may cause harmful interference to radio communications. However, there is no guarantee that interference will not occur in a particular installation.

If this equipment does cause harmful interference to radio or television reception, which can be determined by turning the equipment off and on, the user is encouraged to try to correct the interference by one or more of the following measures:

- Reorient or relocate the receiving antenna.
- Increase the separation between the equipment and receiver.
- Connect the Equipment into an outlet on a circuit different from that to which the receiver is connected.
- Consult the dealer or an experienced radio/TV technician for help.

This equipment complies with FCC radiation exposure limits set forth for an uncontrolled environment. End user must follow the specific operating instructions for satisfying RF exposure compliance. This transmitter must not be co-located or operating in conjunction with any other antenna or transmitter. The portable device is designed to meet the requirements for exposure to radio waves established by the Federal Communications Commission (USA).



WARNING

BATTERY WARNING

The UCLEAR helmet communicator contains a rechargeable lithium ion polymer battery. To reduce risks of fire or burns, do not disassemble, crush, puncture, short external contacts or dispose in fire or water.

CHARGING NOTICE

- To reduce the risk of personal injury, electrical shock, fire or damage to equipments, please follow all the instructions below:
- Do not immerse the product, AC adaptor or speakers in water.
 - Do not install, place or use the product near any source of heat for example: stove, radiator, oven, toaster, coffee maker or other apparatus that gives off heat.
 - Always use the provided AC power adaptor and cable included in the package to charge the product. Use of any incorrect power supply to charge the product may cause permanent damage to the product and render the warranty void.

CONTACT AND SUPPORT INFORMATION

For USA Tech support and warranty department.
M-F 8am-5pm MST.
1-855-248-9283

BITwave USA LLC
1488 E Iron Eagle Dr.
Eagle, ID 83616

For additional information please visit our website at www.uclear-digital.com

LICENCES

The UCLEAR trademark and logo is exclusively owned by BITwave Pte Ltd. Any use of the mark by any other parties without prior written permission of BITwave Pte Ltd constitutes an infringement of legal rights. The Bluetooth trademark is owned by Bluetooth SIG and is used under licence by BITwave Pte Ltd.

COPYRIGHTS

Copyright © 2016 BITwave Pte Ltd. All rights reserved. No part of this guide may be reproduced in any form or by any process whatsoever without prior written consent from BITwave Pte Ltd.